

# Platter Light

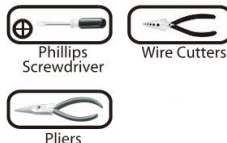


INSTRUCTIONS PERTAINING TO RISK OF FIRE OR INJURY TO PERSONS  
READ ALL INSTRUCTIONS

**IMPORTANT SAFETY INSTRUCTIONS**

SAVE THESE INSTRUCTIONS

TOOLS AND MATERIALS REQUIRED:



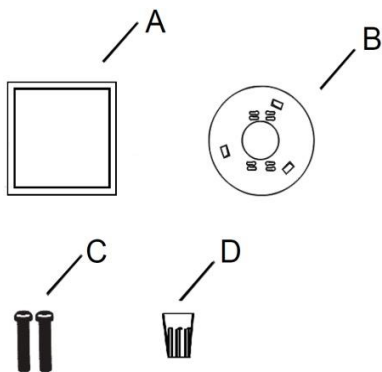
**When wiring, should consult local licensed electrician to meet National Electrical Code or local Electrical code.**

## SAFETY PRECAUTIONS:

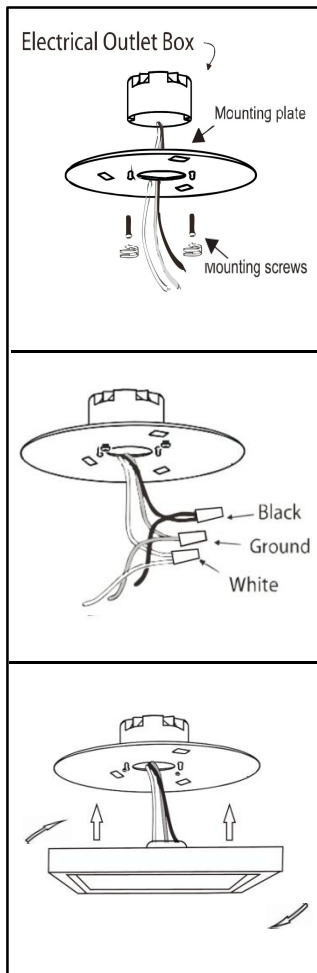
1. TURN OFF ELECTRICAL POWER BEFORE STARTING INSTALLATION OF LIGHT FIXTURE.
2. THIS PRODUCT MUST BE INSTALLED IN ACCORDANCE WITH THE APPLICABLE INSTALLATION CODE BY A PERSON FAMILIAR WITH THE CONSTRUCTION AND OPERATION OF THE PRODUCT AND THE HAZARDS INVOLVED.
3. CAUTION-RISK OF ELECTRIC SHOCK. CONSULT A QUALIFIED ELECTRICIAN TO ENSURE CORRECT BRANCH CIRCUIT CONDUCTOR.

## PACKAGE CONTENTS

PART	DESCRIPTION	QTY
A	LED light	1
B	Mounting plate	1
C	Mounting screws	2
D	Wire nut	3



## FLUSH MOUNT



**1.** Prior to installation, install mounting plate into the junction box with mounting screws. Drive screws completely to the end of the junction box.

**2.** Connect supply wires to wires on fixture with wire nuts. Connect white to white, black to black and copper wire to copper wire as grounding connection.

**3.** Push the fixture back convex area into the junction box space room, then turn towards the arrow direction until fastened.