

LIMITED WARRANTY



promises to repair or replace any ' chair that is found to be defective in material or workmanship within one year from the date of original purchase so long as you, the original purchaser, still owns it. This is your sole and exclusive remedy. This warranty is subject to the provisions below.

This warranty does not apply and no other warranty applies to:



- Normal wear and tear, which are to be expected over the course of ownership.
- Misuse, abuse or excessive use of the product.
- Modifications or attachments to the product that are not approved
- Products that were not installed, used, or maintained in accordance with product instructions and warnings.
- Products used for rental purposes or unauthorized retail activities

Seating Usage: Normal use for seating is identified as the equivalent of a single shift, forty- (40) hour workweek. To the extent that a seating product is used in a manner exceeding this, the applicable warranty period will be reduced in a pro-rata manner.

RETURN POLICY

We adopt a 30 days return policy which means that all products purchased on this website may be returned to us within the timeframe. You need to contact us within 30 days after the product(s) came into your possession and the product(s) must be returned to us without any undue delays.

Returned products must be returned in the same condition as they were sent and they must be sent in its original packaging.

If the product is not faulty, (i.e. if you changed your mind or if you are unhappy with the product for some other reason), the cost of shipping will fall on you. And it is your responsibility that the package arrives safely to us so we recommend that you use a courier service where it is possible to track the shipment.

If the product is faulty when you receive it please contact us and we will help you out.

We reserve the right to give a partial refund in cases when the product(s) is not in an unused condition, is damaged or have missing parts not due to our error.

HOW RETURNS WORK

Contact us through the contact form on our website and attach the invoice to the message as a proof of purchase. And please also write the reason for return.

We will then get back to you as soon as possible with information on where to send the product(s).

As soon as we have received the product(s) and made an inspection we will inform you of our decision.

If a refund is approved we will automatically credit the purchase to your credit card or original method of payment.

BEFORE YOU GET STARTED, A FEW POINTERS

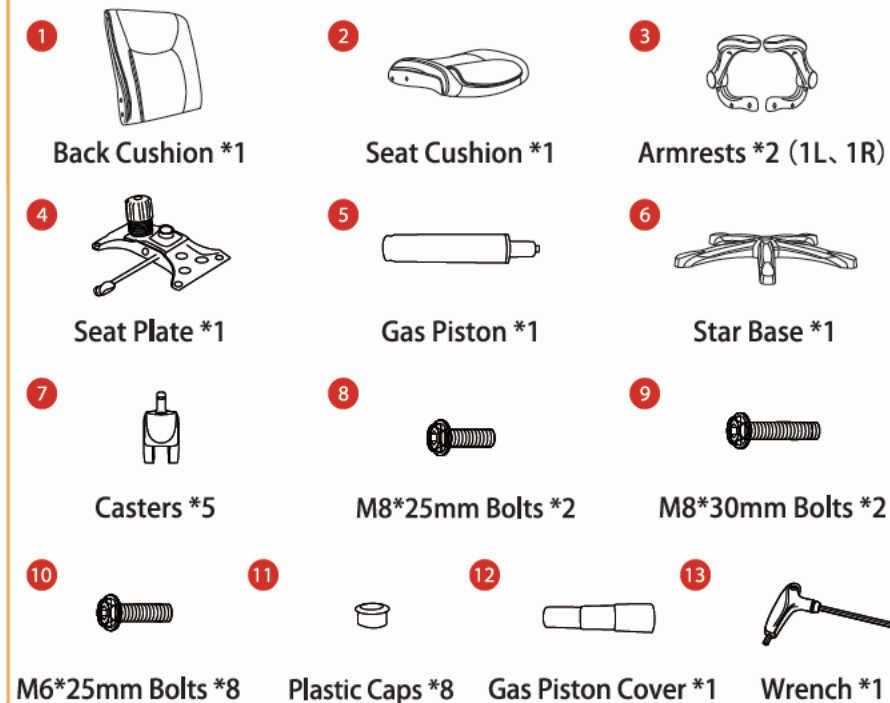


Having a friend to help makes assembly extra-easy



Mind the important safety information

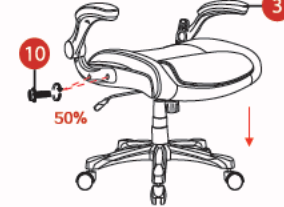
★ PLEASE MAKE SURE ALL THE PARTS ARE INCLUDED.



Missing parts ? support@colamychair.com

ASSEMBLY INSTRUCTION

STEP 3



Turn the Seat Cushion upright and align the center hole of the Seat Plate over the Gas Piston, then push the Seat Cushion down onto the Gas Piston firmly until the connection is secure. Attach the Two Arms(3) to the Seat Cushion(2) with Four Bolts M6*25mm(10), using the Wrench(13).

Note 1: Armrests are labeled with an "L" (left) or "R" (right) to show which sides they should be placed on.
Note 2: Do not tighten all the bolts to 100% at first, 50% is enough, make sure it have space to adjust in the next steps.

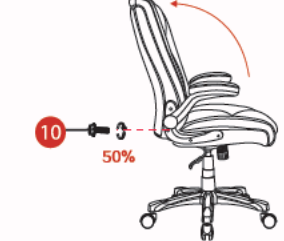
STEP 4



Lay the Back Cushion on the seat of the chair with the top of the cushion toward the front. Attach the Back Cushion(1) to the Arms by inserting Two Bolts M6*25mm(10) in the upper holes with the Wrench(13).

Note: Do not tighten all the bolts to 100%, 50% is enough, make sure it have space to adjust in the next steps.

STEP 5



Rotate the back of the chair up, then secure it with the Lower Two Bolts M6*25mm(10) with the Wrench(13).

Note: Do not tighten all the bolts to 100%, 50% is enough, make sure it have space to adjust in the next steps.

STEP 6



Adjust the balance on each side of the chair, and fully tighten all the bolts at this step.

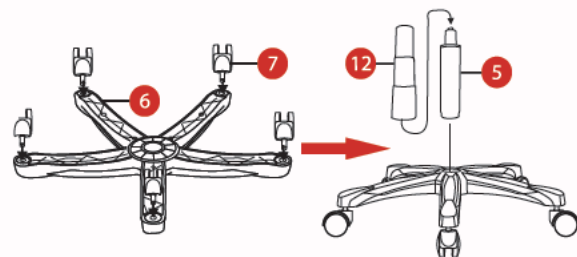
STEP 7



Press the Plastic Caps(11) into the Arms holes to cover the bolts. Now, your chair is successfully installed.

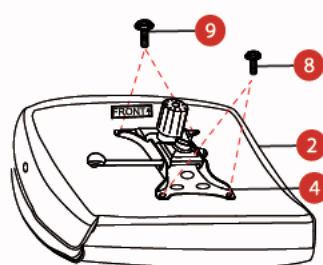
ASSEMBLY INSTRUCTION

STEP 1



Turn the Star Base(6) upside down, then press the Casters(7) into the holes at the end of each base leg, insert the Gas Piston(5) into the center hole of the Star Base, the Gas Piston Cover(12) should be placed over the Gas Piston.

STEP 2



Align the Seat Plate(4) over the pre-drilled holes underneath the Seat Cushion(2), make sure that the front of the Seat Plate is facing the front of the Seat Cushion. Attach the Seat Plate to the Seat Cushion using Two Bolts M8*30mm(9) at the front and Two Bolts M8*25mm(8) at the back, tighten all the bolts with the Wrench(13), being careful not to miss-thread the bolts or damaged the Seat.



WARNING:



Read the instructions carefully.



Please follow the assembly steps.

Weight Capacity for Seating: 400LBS

To ensure proper assembly, follow all steps and use all parts. Failure to follow this warning can result in serious injury to yourself or others.

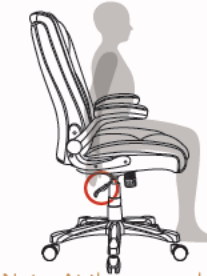
To avoid misalignments, leave the screws loose and do not tighten them until all are in their respective places.

Do not overtighten or force the screws as they could break, strip, or damage the threads of the holes.

Using the wrong size of screws on a part could result in damage to the screw or the part.

Lubricate all moving parts and tighten all bolts/screws every 6 month or whenever needed.

SEAT HEIGHT : Paddle-shaped lever on the right side



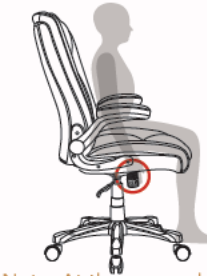
To raise:
While taking your weight off chair, lift lever up.



To lower:
While seated, lift lever up.

Note: At the proper height, your feet should rest flat on the floor.

TILT TENSION: Long stem under the seat cushion with knob



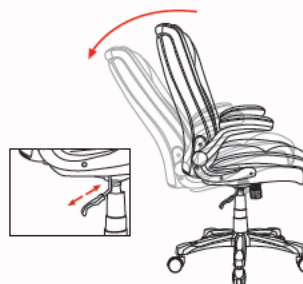
To increase tension:
While seated, turn knob forward (toward + sign).



To decrease tension:
While seated, turn knob backward (toward - sign).

Note: At the proper height, your feet should rest flat on the floor.

OPERATING THE ROCKING LOCKOUT



To let your chair Rocking back, pull the control handle out.

To stop your chair from Rocking, sit forward, then push the control handle in.

SAFETY INFORMATION



Sit in the center of the chair, with your back to the backrest



Do not sit at the front edge of the chair



Do not stand on the chair



Do not use the chair with more than one person



Do not push the chair around when a person is sitting in it



Do not push down on the backrest when a person is reclined