

**LEFT ASSEMBLY  
INSTRUCTIONS**

-----  
INSTRUCTIONS  
D'ASSEMBLAGE GAUCHE  
-----

-----  
INSTRUCCIONES DE  
ENSAMBLAJE IZQUIERDO  
-----



**RIGHT ASSEMBLY  
INSTRUCTIONS**

-----  
INSTRUCTIONS  
D'ASSEMBLAGE DROIT  
-----

-----  
INSTRUCCIONES DE  
ENSAMBLAJE DERECHO  
-----




**Thank you for choosing a product. Your total satisfaction is our #1 priority.**

Should you have a problem or need more information concerning the warranty, **do not call to the place of purchase.**


Please have your assembly instruction manual on hand when you call. Our products are warranted to the original purchaser against defects in material or workmanship in the furniture. Defects as mentioned in this warranty refer to any imperfections which may impair the use of the product. Our warranty is expressly limited to the replacement of furniture parts and components for 1 year following the date of purchase. We will replace any part that is defective. This warranty applies under conditions of normal use. Our furniture products are not intended for outdoor use. The warranty does not cover defects caused by improper assembly or disassembly, defects occurring after purchase due to product modifications, intentional damage, accident, misuse, exposure to the elements and labor or assembly costs. We reserve the right to request proof of purchase to document a warranty claim. In no event shall we be liable for incidental or consequent damages resulting from the misuse of the product. This warranty is not transferable and is valid only in Canada and the United States excluding Alaska, Hawaii and Puerto Rico.

► PARTS / PIÈCES / PIEZAS

CODE / CÓDIGO	QTY / QTÉ / CANT.	CODE / CÓDIGO	QTY / QTÉ / CANT.	CODE / CÓDIGO	QTY / QTÉ / CANT.	CODE / CÓDIGO	QTY / QTÉ / CANT.
CA01A	4	17	1	CA70B	1	<b>moldings / moulures / molduras</b> 1 9/16" x 13 15/16" (40 mm x 353 mm)	3
CA05A	4	18	1	81	1		
CA09A	2	66	2	<b>bottom / fond / fondo</b> 15 3/8" x 12 7/16" (391 mm x 316 mm)	3		
CA13A	2	67	1	<b>moldings / moulures / molduras</b> 2" x 29 1/8" (51 mm x 740 mm)	1		

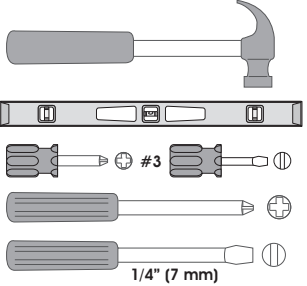


**two people are required to assemble and move this model.**  
deux personnes sont requises pour assembler et déplacer ce modèle.  
se necesitan dos personas para ensamblar y desplazar este mueble.

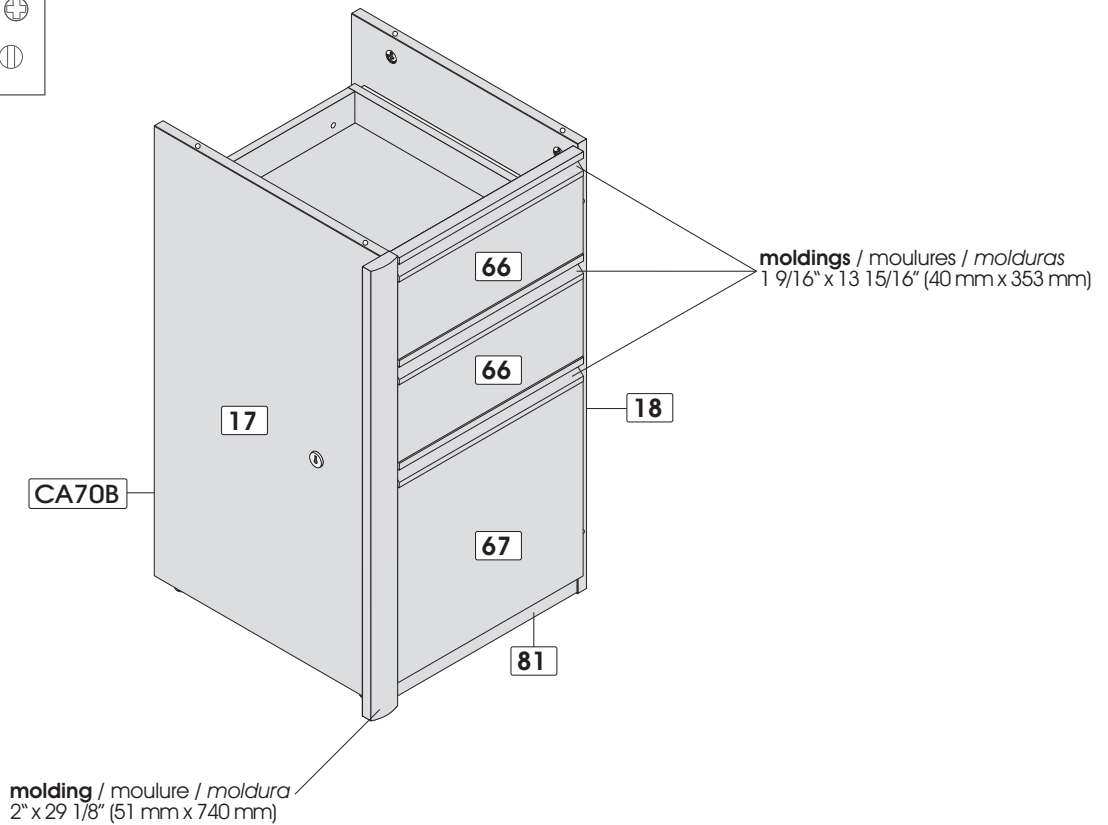


**the use of electric tools must be made with vigilance.**  
l'utilisation d'outils électriques doit être faite avec vigilance.  
las herramientas eléctricas deben utilizarse con sumo cuidado.

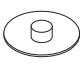

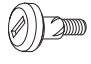



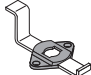


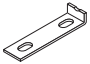
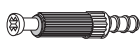


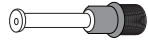
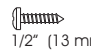
**tools required**  
outils requis  
herramientas necesarias




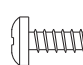
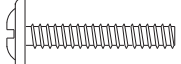
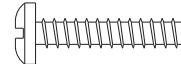
1/4" (7 mm)



**HARDWARES / QUINCAILLERIES / QUINCALLAS**

CODE / CÓDIGO	QTY / QTÉ / CANT.	CODE / CÓDIGO	QTY / QTÉ / CANT.	CODE / CÓDIGO	QTY / QTÉ / CANT.	CODE / CÓDIGO	QTY / QTÉ / CANT.
CA-99	 2	EX-681	 2 11 7/8" (302 mm)	PA-844	 1" (25 mm) 4	VR-212	 1" (25 mm) 25
CL-745	 1	EX-702	 2 16 1/8" (411 mm)	SE-686	 1		
CO-249	<b>runners 406 mm (16")</b> coulisseaux 406 mm correderas 406 mm 3	H-03	 20	VE-244	 3/8" (10 mm) 18		
CR-141	 2	H-04	 10	VM-601	 3/4" (20 mm) 6		
EC-744	 6	H-36	 10	VR-207	 1/2" (13 mm) 24		

**REAL SIZE / GRANDEUR RÉELLE / TAMAÑO REAL**

CODE / CÓDIGO	QTY / QTÉ / CANT.	CODE / CÓDIGO	QTY / QTÉ / CANT.
VE-244	 3/8" (10 mm) 18	VR-207	 1/2" (13 mm) 24
VM-601	 3/4" (20 mm) 6	VR-212	 1" (25 mm) 25

**IMPORTANT NOTICE / NOTE IMPORTANTE / NOTA IMPORTANTE**

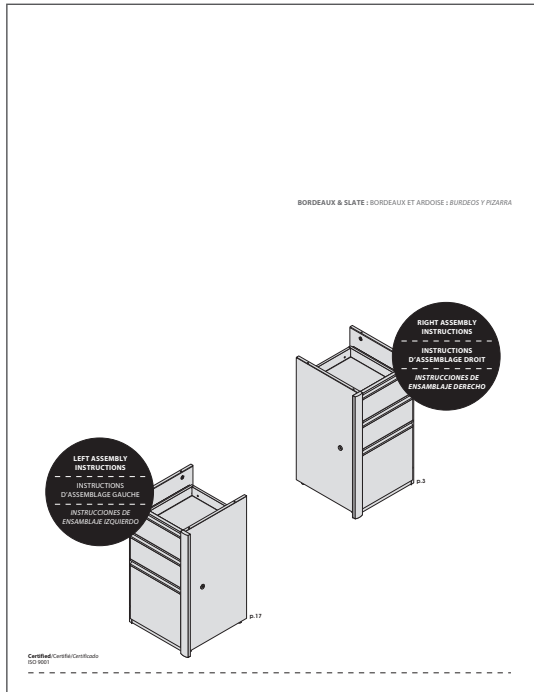
**Group together all the hardware required for each step as the construction of your piece of furniture is progressing.**

Regroupez toutes les quincailleries requises pour chaque étape de façon à vous assurer de tout installer au bon moment.

Reúna todas las quincallas necesarias para cada una de las etapas de montaje, para asegurar una correcta instalación en el momento adecuado.

# ▶ IMPORTANT NOTICE / NOTE IMPORTANTE / NOTA IMPORTANTE

Duly complete the self-adhesive sticker. / Assurez-vous de bien remplir l'autocollant. / Asegúrese de completar correctamente la etiqueta.



## Important/Importante

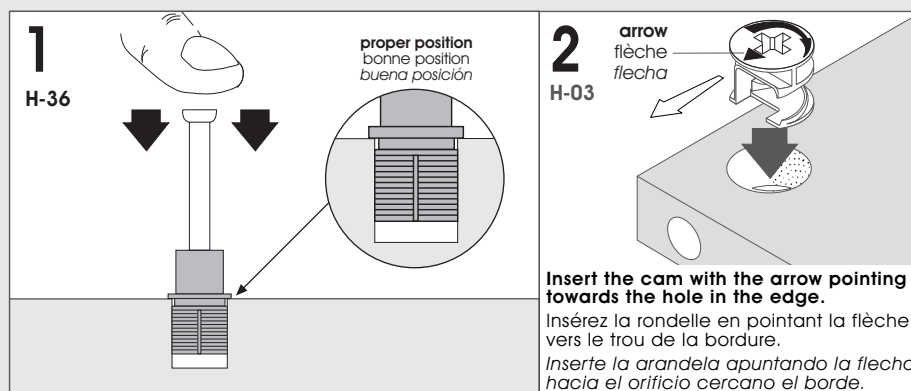
Please retain the self-adhesive sticker which you will install at step 11 of the instruction manual.

Conservez l'auto-collant qui sera collé seulement à l'étape 11 du feuillet d'instructions.

Conserve la etiqueta que será pegada sólo en la etapas 11 de la hoja de instrucciones.

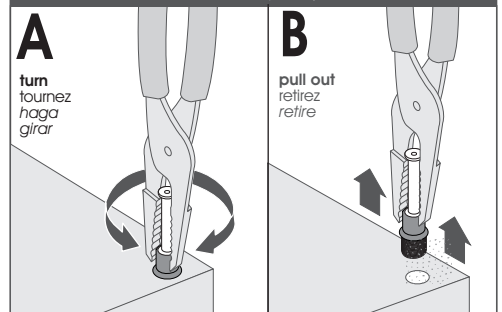
# ▶ IMPORTANT NOTICE / NOTE IMPORTANTE / NOTA IMPORTANTE

▶ Main hardware system / Système de quincaillerie principal / Sistema principal de quincalla

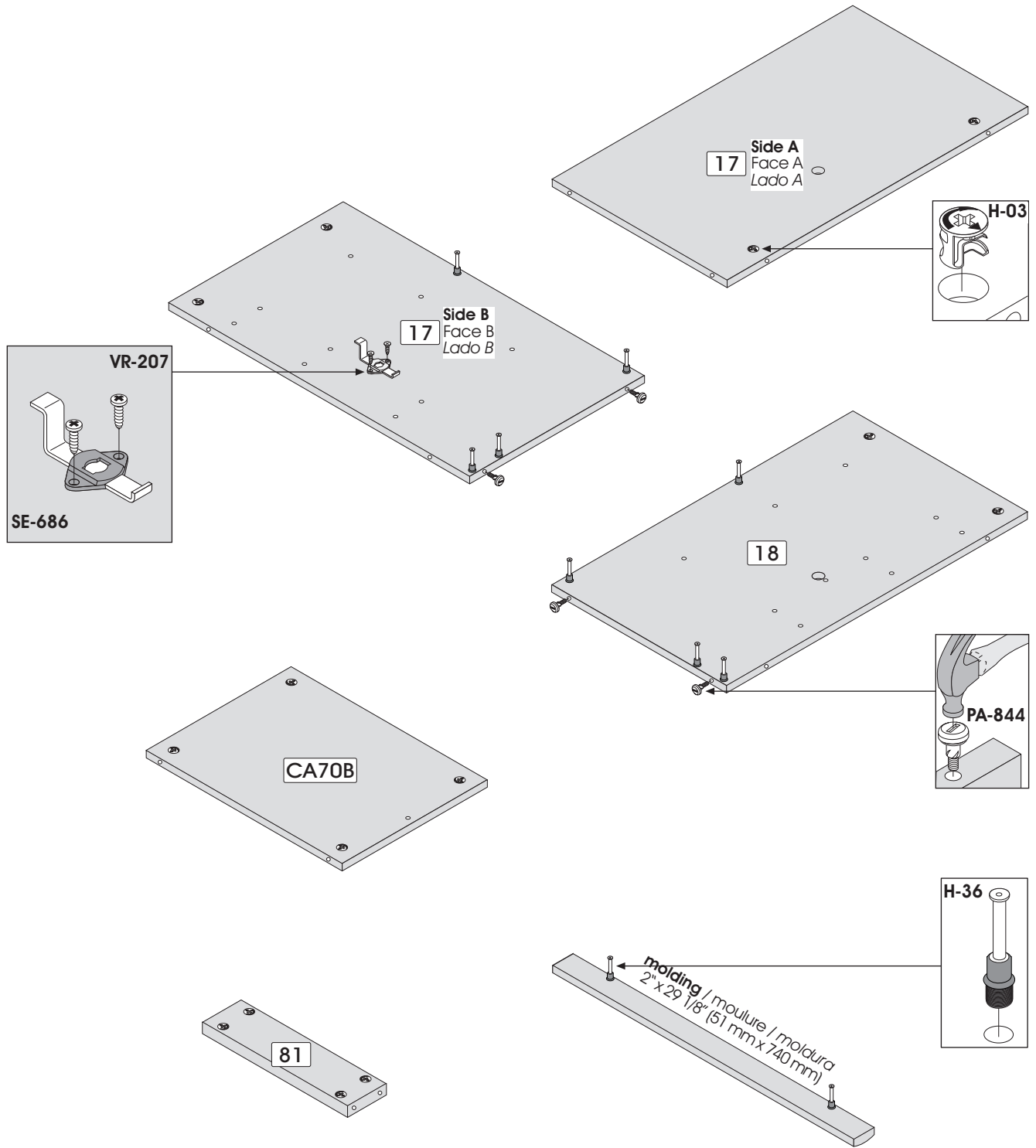


If needed / En cas de nécessité  
En caso de necesidad

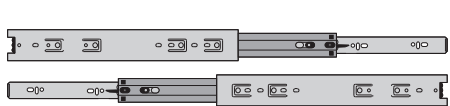
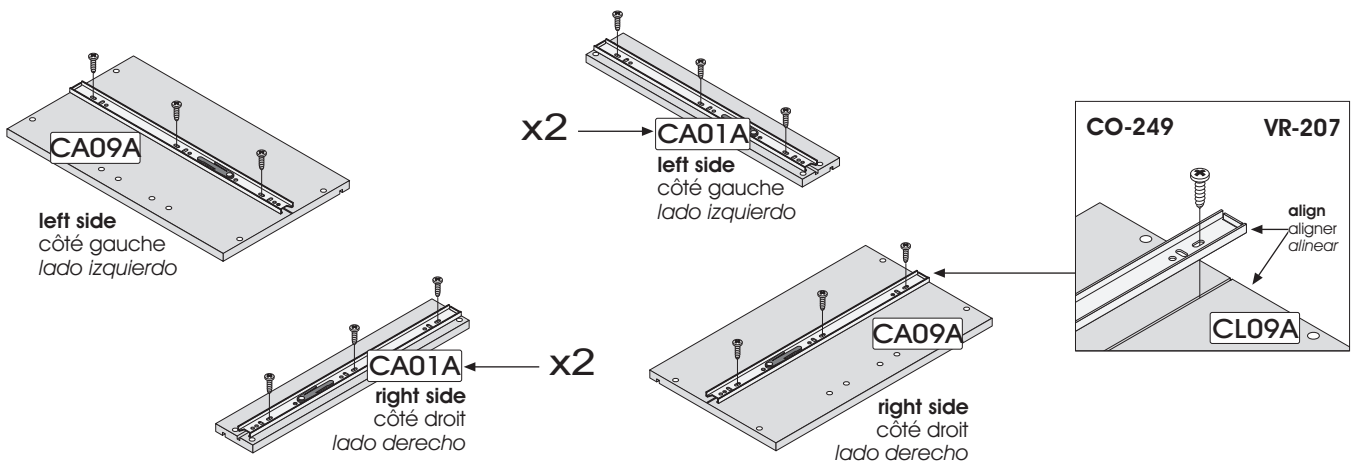
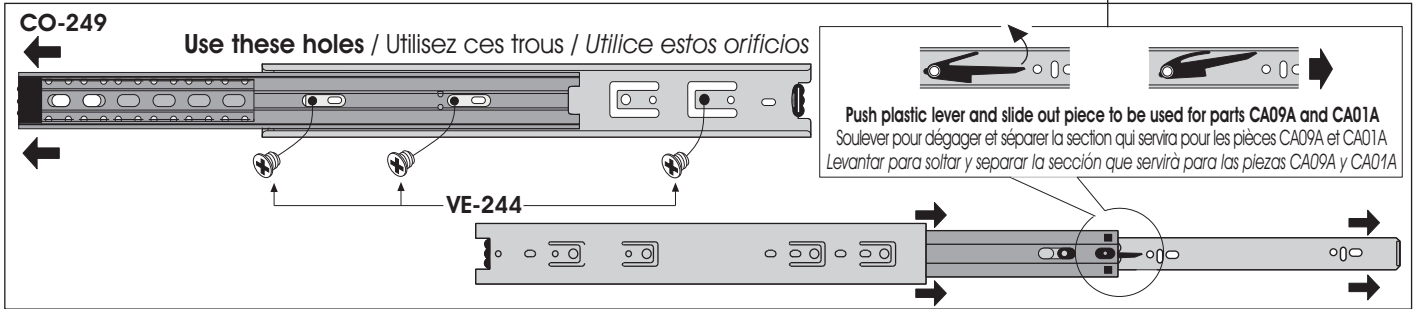
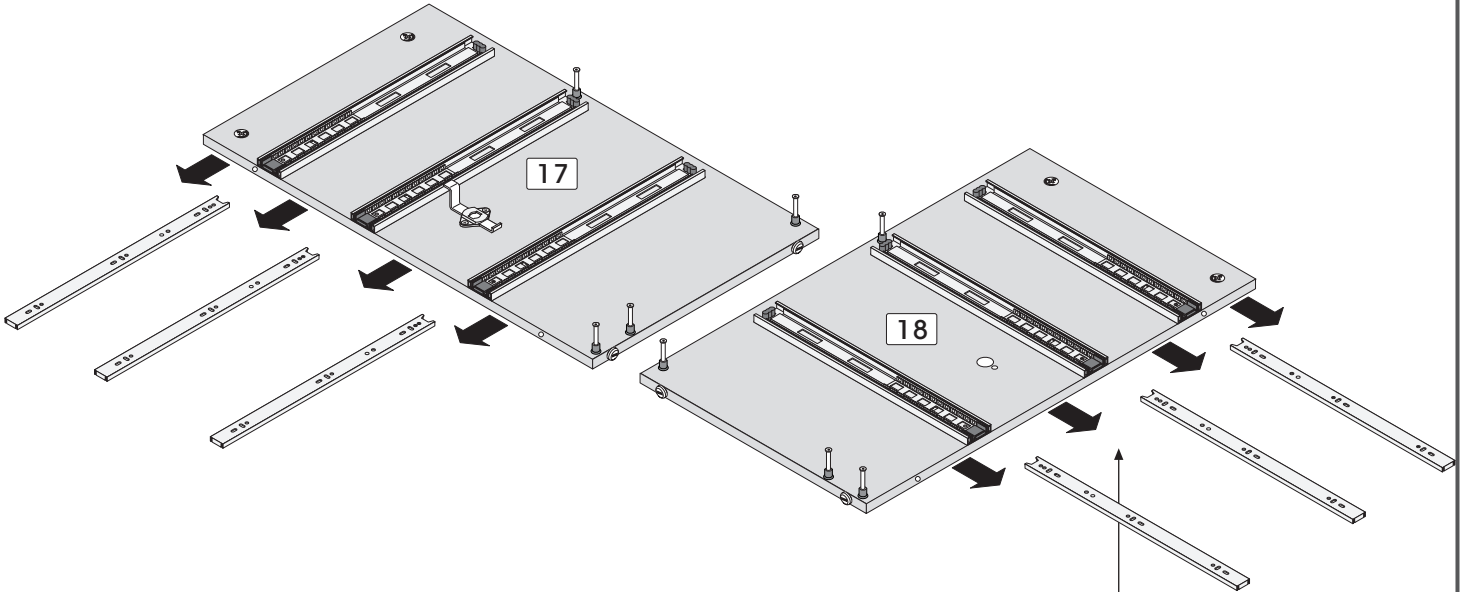
How to remove a misplaced assembly bolt (H-36).  
Comment retirer un boulon (H-36) mal situé.  
Cómo retirar un perno (H-36) mal ubicado.



**Pedestal with 3 Drawers / Caisson à trois tiroirs / Modulo con tres cajones**



Code / Código	H-03	H-36	PA-844	SE-686	VR-207
Qty / Qté / Cant.	x 14	x 10	x 4	x 1	x 2



Code / Código

CO-249

Qty / Qté / Cant.

x 3

VE-244

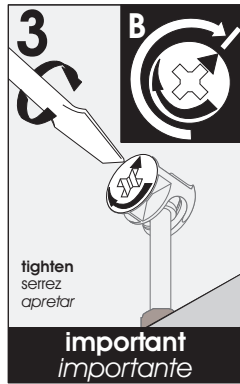
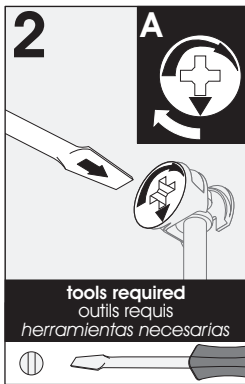
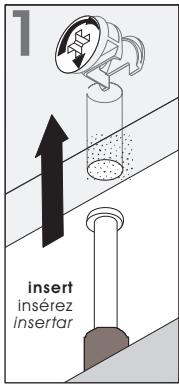
x 18

VR-244

x 18

## IMPORTANT NOTICE / NOTE IMPORTANTE / NOTA IMPORTANTE

### ▶ Main hardware system / Système de quincaillerie principal / Sistema principal de quincalla



**Make sure to properly tighten each cam to ensure furniture solidity. Otherwise, parts could be damaged or the user could be injured.**

Assurez-vous de bien resserrer chaque rondelle pour assurer la solidité du meuble. Dans le cas contraire, des pièces pourraient être endommagées ou l'utilisateur pourrait se blesser.

Asegúrese de apretar bien cada arandela para garantizar la solidez del mueble. De lo contrario, podría provocarse daño a las piezas o las personas.

## 3 ASSEMBLY / ASSEMBLAGE / ENSAMBLAJE

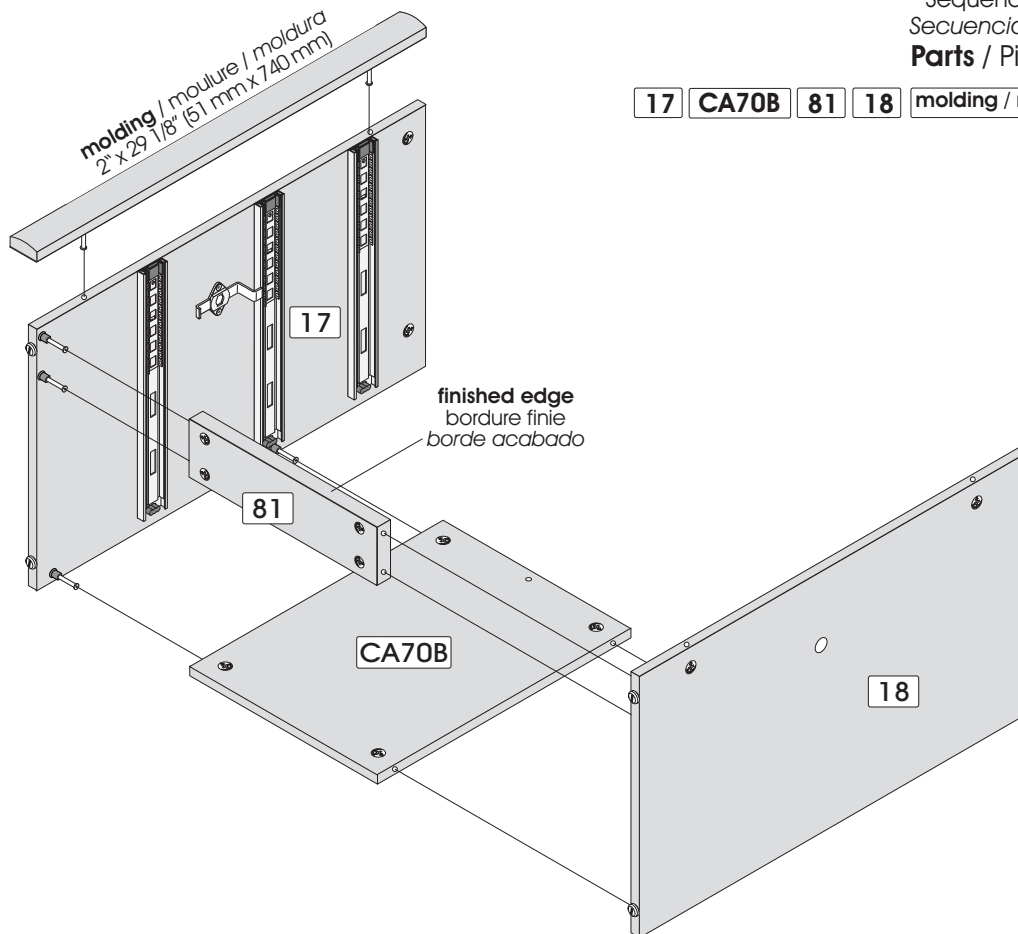
### Pedestal with 3 Drawers / Caisson à trois tiroirs / Módulo con tres cajones

**Assemble on the back edge**  
Assemblez sur la bordure arrière  
Realice el ensamblaje sobre el borde trasero

**Assembling sequence**  
Séquence d'assemblage  
Secuencia de ensamblaje

**Parts / Pièces / Piezas:**

17 CA70B 81 18 molding / moulure / moldura



**two people are required to assemble and move this model.**

deux personnes sont requises pour assembler et déplacer ce modèle.  
se necesitan dos personas para ensamblar y desplazar este mueble.



**4** **HARDWARE INSTALLATION / INSTALLATION DES QUINCAILLERIES / INSTALACIÓN DE LAS QUINCALLAS**

**Pedestal with 3 Drawers / Caisson à trois tiroirs / Modulo con tres cajones**


**2 possibilities / 2 possibilités / 2 posibilidades**

**93400**  
not included  
non-inclus  
no se incluye

**93612**  
not included  
non-inclus  
no se incluye

**Important**  
*Importante*

screw in  
vissez  
atornillar



**H-04**

**4**



**Code / Código** H-04  
**Qty / Qté / Cant.** x 4

**Assemble on the back edge**

Assemblez sur la bordure arrière

Realice el ensamblaje sobre el borde trasero

**Assembling sequence**

Séquence d'assemblage

Secuencia de ensamblaje

**Parts / Pièces / Piezas:**

17

18

CA70B

+

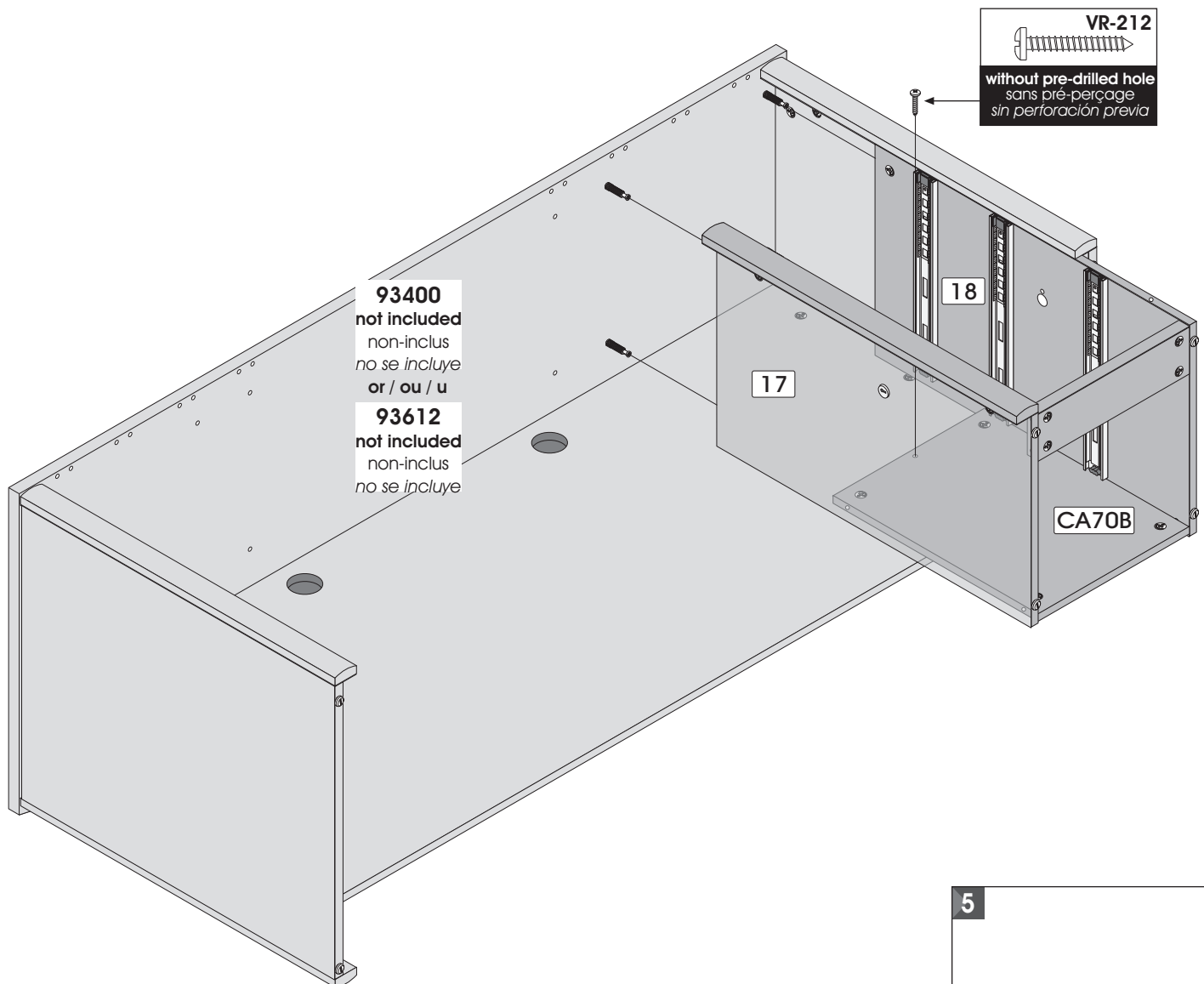
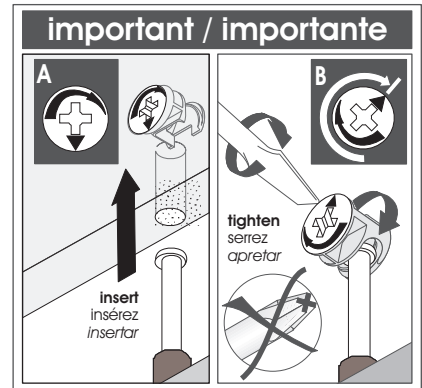
VR-212



**two people are required to assemble and move this model.**

deux personnes sont requises pour assembler et déplacer ce modèle.

se necesitan dos personas para ensamblar y desplazar este mueble.



**93400**  
not included  
non-inclus  
no se incluye  
or / ou / u

**93612**  
not included  
non-inclus  
no se incluye

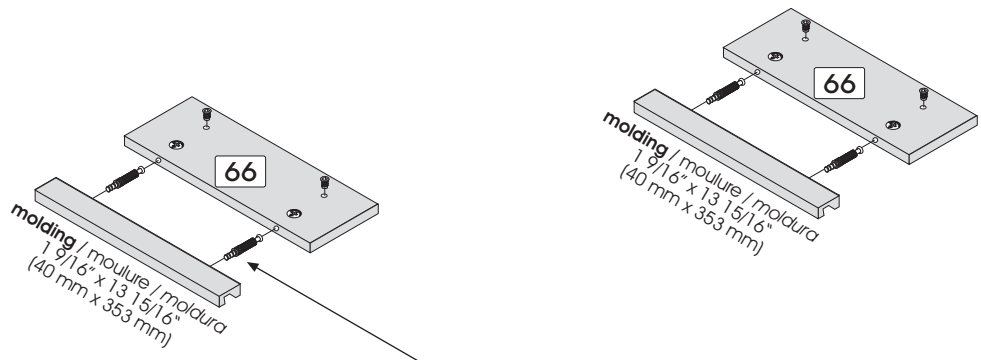
5



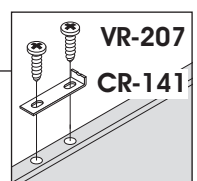
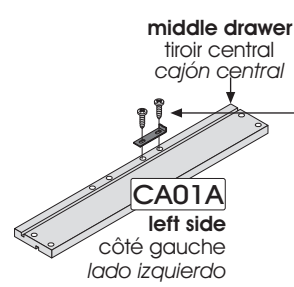
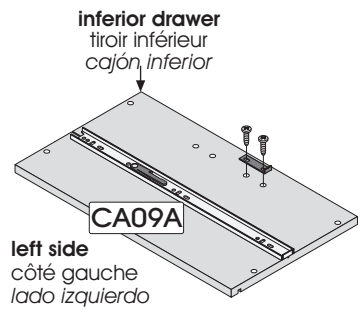
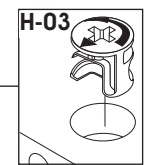
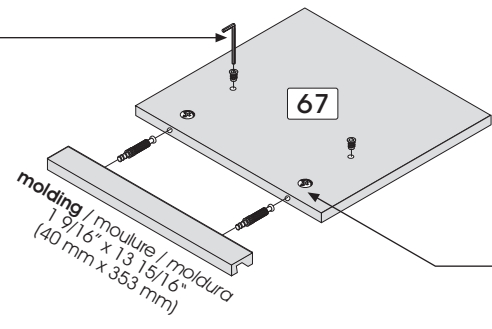
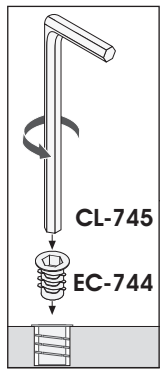
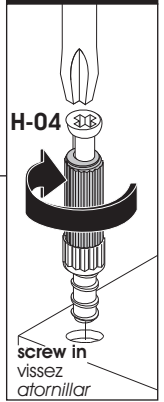
Code / Código VR-212

Qty / Qté / Cant. x 1

**Drawers / Tiroirs / Cajónes**



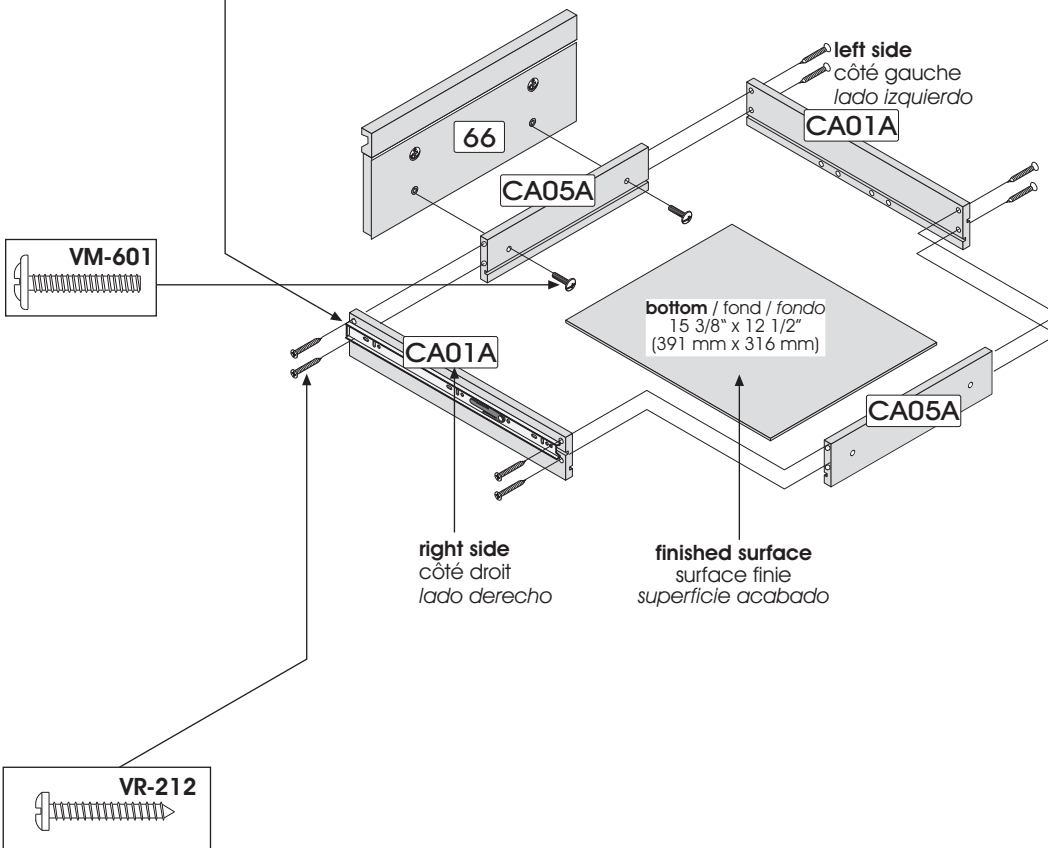
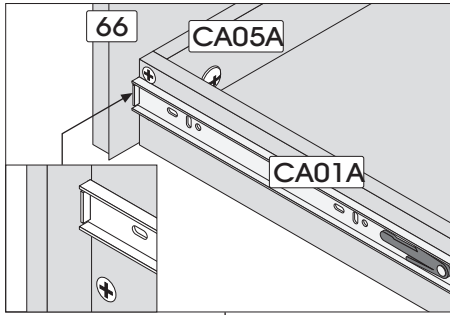
**Important**  
*Importante*



<b>Code / Código</b>	H-03	EC-744	H-04	CL-745	CR-141	VR-207
<b>Qty / Qté / Cant.</b>	x 6	x 6	x 6	x 1	x 2	x 4

**Assembling sequence**  
 Séquence d'assemblage  
 Secuencia de ensamblaje  
**Parts / Pièces / Piezas:**

CA05A CA01A CA01A + bottom / fond / fondo + CA05A 66



VM-601

x 2



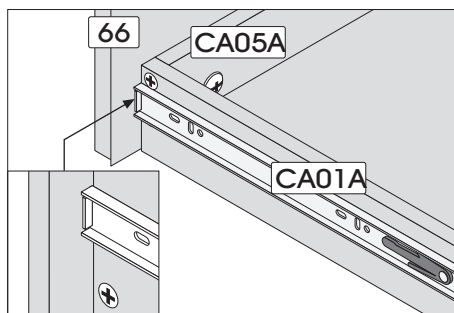
VR-212

x 8

Code / Código

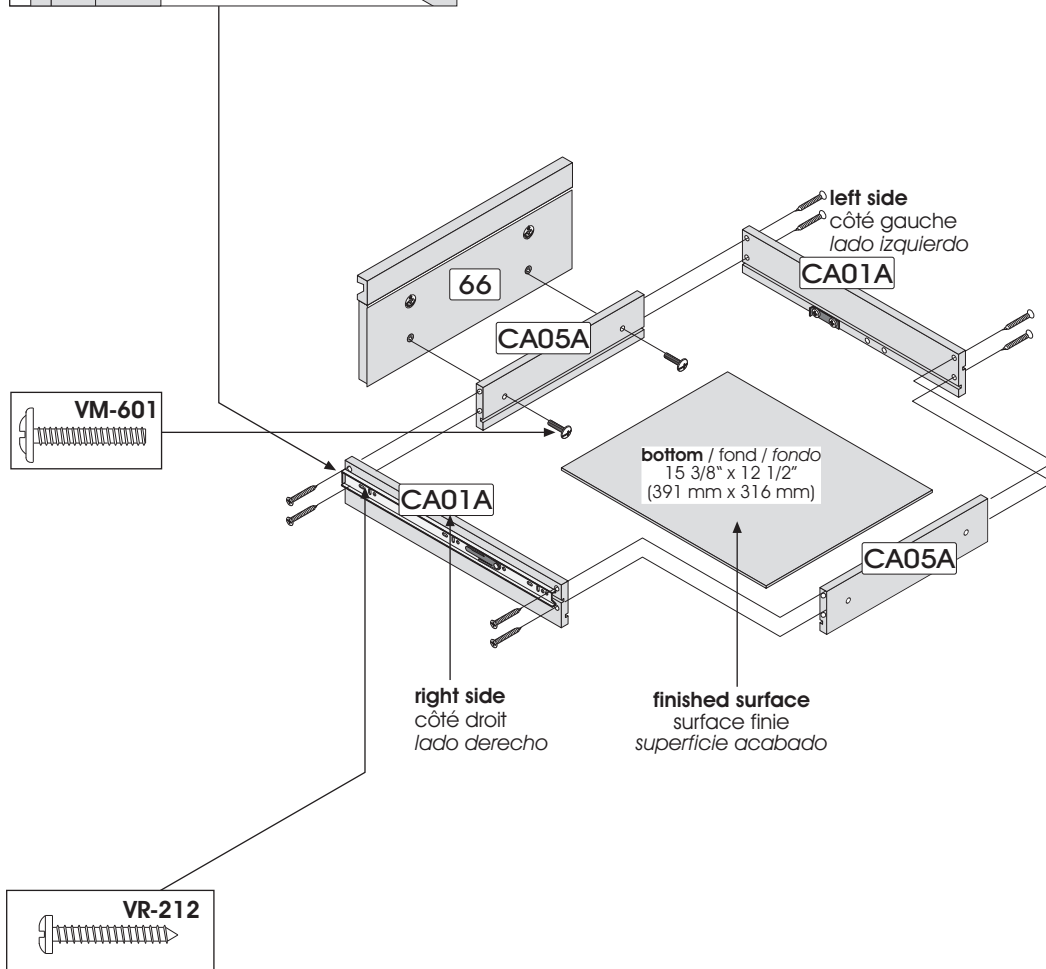
Qty / Qté / Cant.

Middle Drawer / Tiroir central / Cajón central



**Assembling sequence**  
 Séquence d'assemblage  
 Secuencia de ensamblaje  
**Parts / Pièces / Piezas:**

CA05A CA01A CA01A + bottom / fond / fondo + CA05A 66



VM-601



VR-212

Code / Código

Qty / Qté / Cant.

x 2

x 8

Inferior Drawer / Tiroir inférieur / Cajón inferior

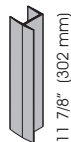
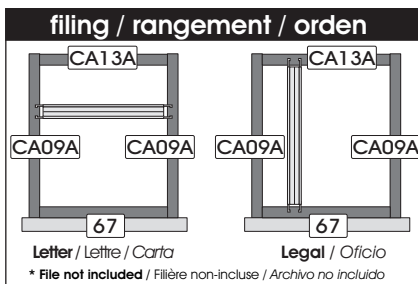
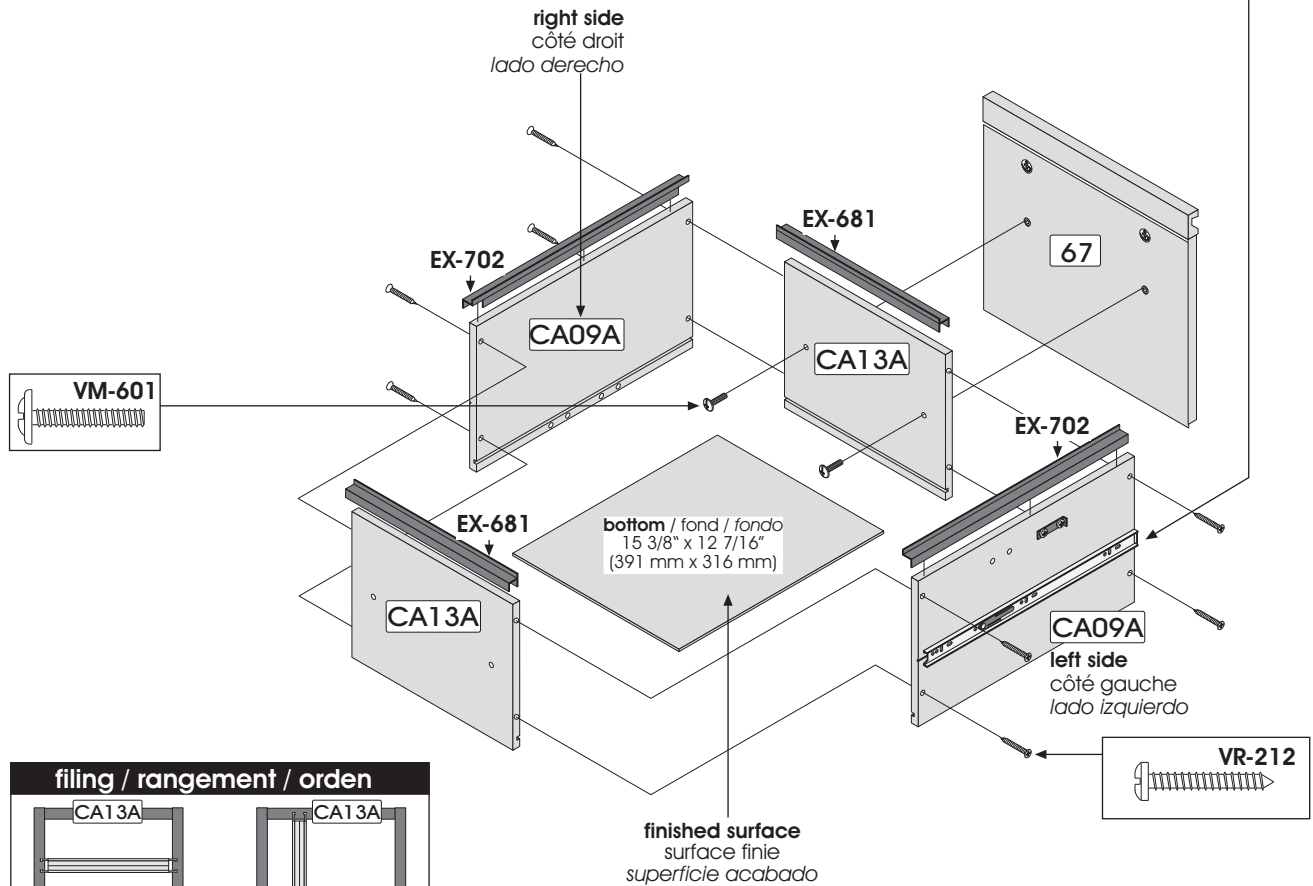
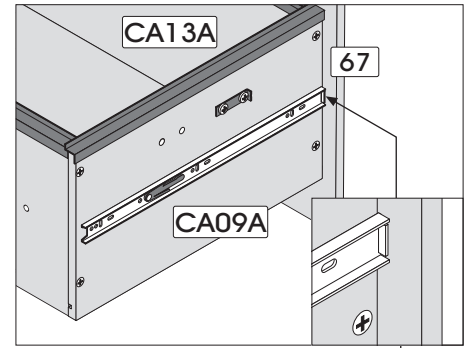
Assembling sequence

Séquence d'assemblage  
Secuencia de ensamblaje

Parts / Pièces / Piezas:

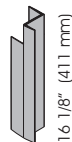
CL13A EX-681 CA09A EX-702 CA09A EX-702 +

bottom / fond / fondo + CL13A EX-681 67



EX-681

x 2



EX-702

x 2



VM-601

x 2



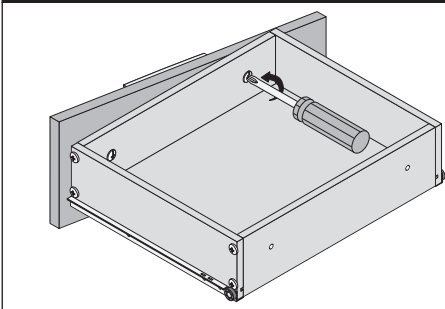
VR-212

x 8

Code / Código

Qty / Qté / Cant.

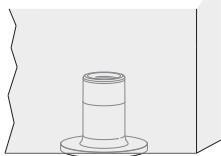
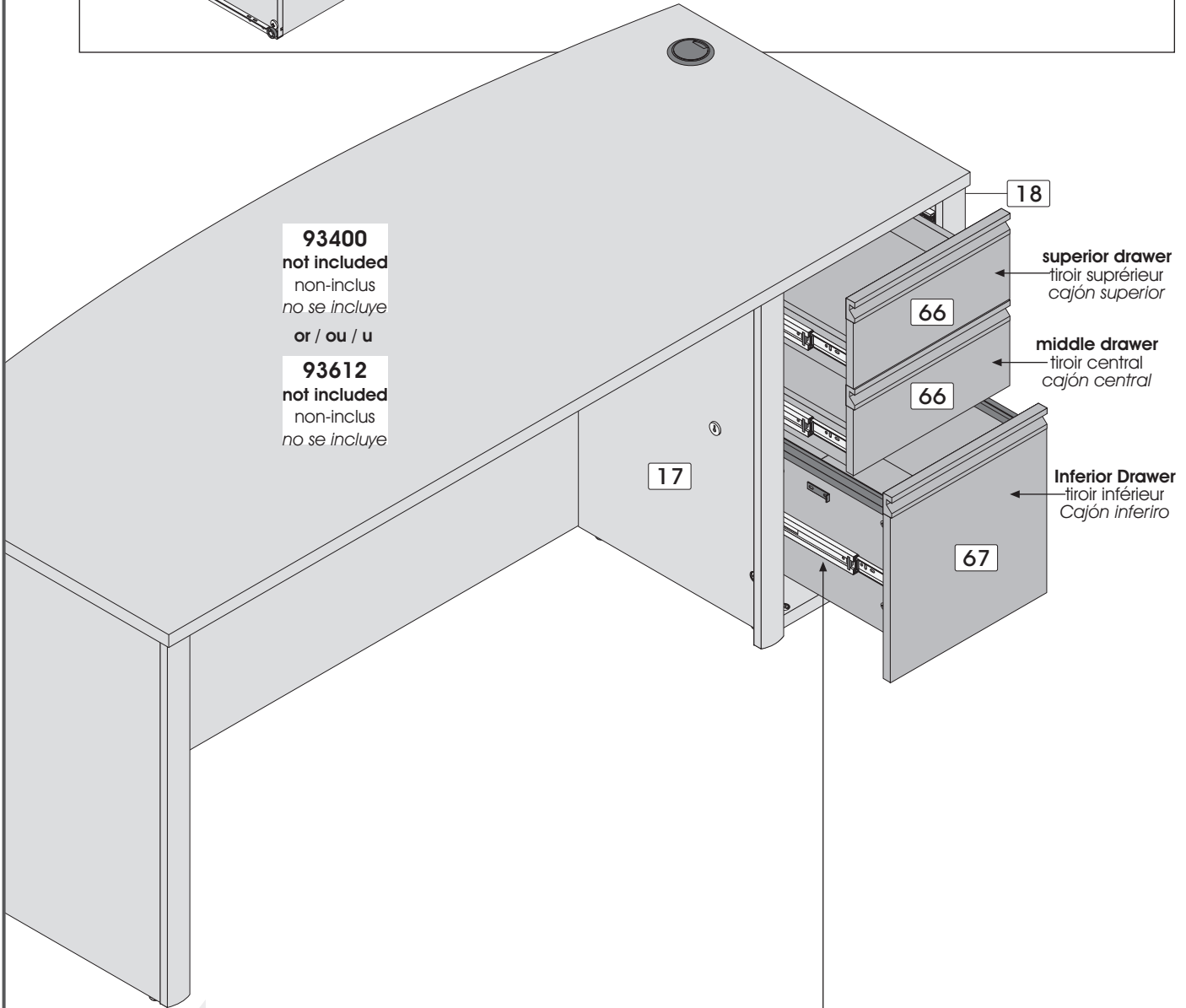
### Adjustement / Ajustement / Ajuste



**After installing drawers into cabinet, adjust drawer fronts and tighten screws VM-601.**

Après avoir installé les tiroirs dans le meuble, ajustez les devants de tiroirs et resserrez les vis VM-601.

Después de instalar los cajones en el mueble, ajuste las partes delanteras de los cajones y vuelva a atornillar a fondo los tornillos VM-601.



PA-844

**To level your furniture, use leg levelers.**

Pour niveler votre meuble utilisez les pattes ajustables.

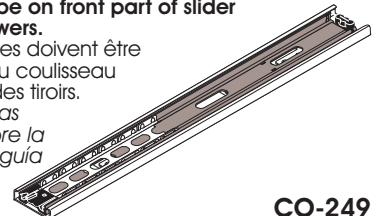
Para nivelar su mueble utilice las patas ajustables.

### Important/Importante

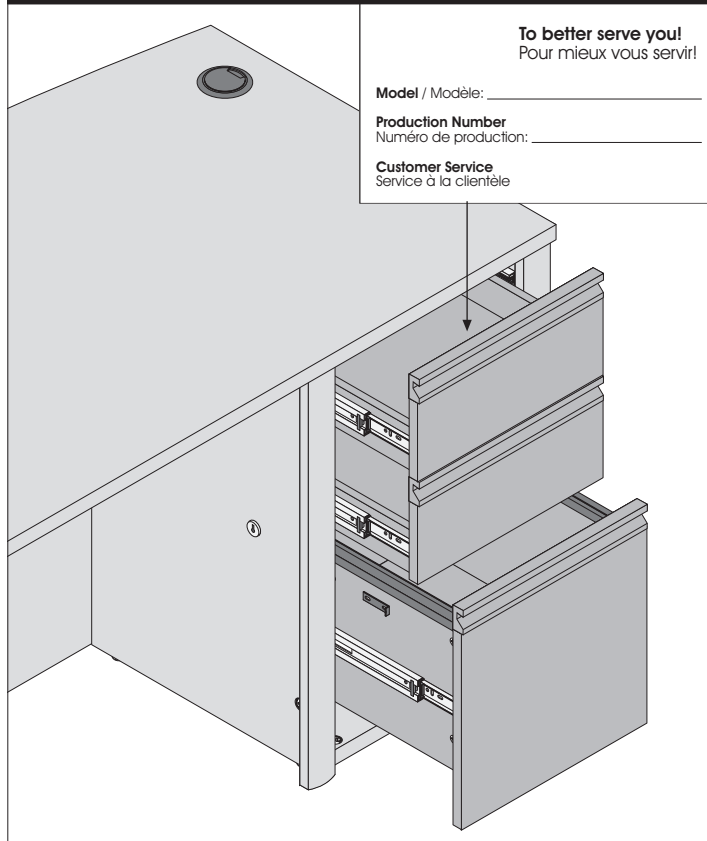
**Ball bearings must be on front part of slider when installing drawers.**

Les roulements à billes doivent être sur la partie avant du coulisseau lors de l'installation des tiroirs.

Los cojinetes de bolas deben ubicarse sobre la parte delantera de guía en el momento de instalar los cajones.



CO-249

**Important/Importante**

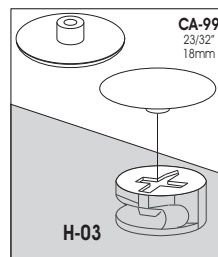
**For future reference and to better serve you, please apply the self-adhesive sticker in an accessible space such as inside a drawer.**

Pour mieux vous servir en cas de besoin, veuillez apposer l'auto-collant dans un endroit facilement accessible tel que l'intérieur d'un tiroir.

*Para uno mejor servicio en caso de necesidad, poner la etiqueta en un lugar de fácil acceso como por ejemplo al interior de un cajón.*

**When you have completed the assembly of your new furniture, install plastic caps**

Lorsque vous avez complété l'assemblage de votre meuble, installez les capuchons de plastique  
 Una vez que haya completado el ensamblaje del mueble, coloque los capuchones de plástico

**PRODUCT CARE / ENTRETIEN DU PRODUIT / MANTENIMIENTO DEL PRODUCTO**

**Avoid placing the furniture in the sunlight or near a source of heat. Use a soft dry cloth for dusting. To clean heavy dirt, use a cloth dipped in a solution of mild detergent and water. Avoid leaving wet objects on the surface or using commercial chemical cleaning products.**

Évitez d'exposer le meuble au soleil ou près de toute source de chaleur. Pour le nettoyage, utilisez un chiffon doux et sec. Pour la grosse saleté, utilisez un chiffon humidifié avec un peu de détergent dilué dans l'eau. Évitez de laisser des objets mouillés sur la surface de votre meuble ou d'utiliser des nettoyants chimiques.

*Evite exponer el mueble al sol o las fuentes de calor. Para limpiarlo, utilice un paño suave y seco. Para limpiar las manchas rebeldes, utilice un trapo húmedo con un poco de detergente diluido en agua. No deje objetos mojados encima del mueble ni utilice limpiadores que contengan productos químicos. química.*

**CONGRATULATIONS! YOU ARE NOW THE OWNER OF A QUALITY PRODUCT**

FÉLICITATIONS! VOUS AVEZ MAINTENANT EN VOTRE POSSESSION UN PRODUIT DE QUALITÉ  
 FELICITACIONES! AHORA ES USTED DUEÑO DE UN PRODUCTO DE CALIDAD.