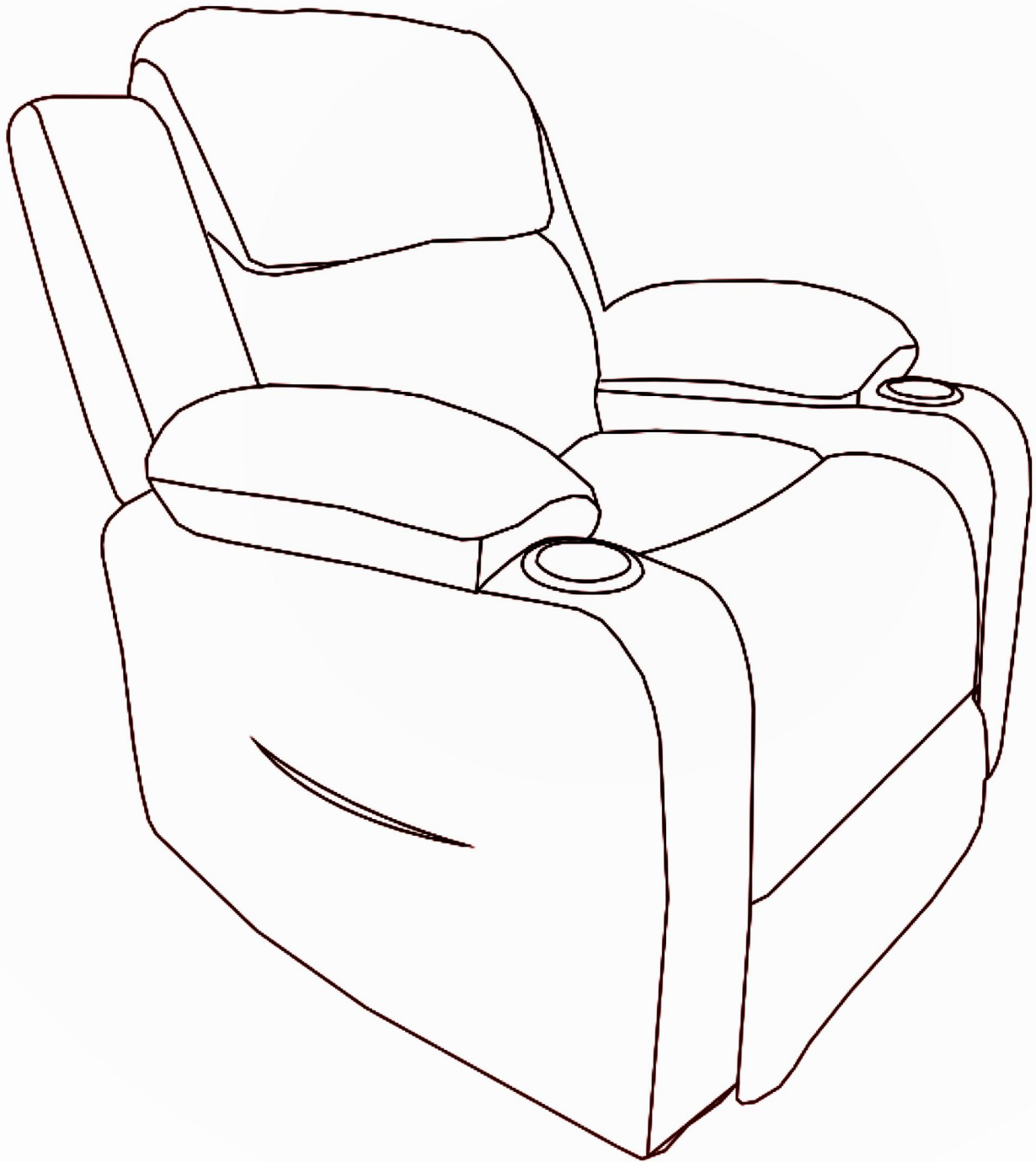


Power Lift Chair Assembly Instruction



FAQ

Q1: Missing parts when received.

A: If you find some parts are missing from the box, please kindly send us messages to let us know the name of missing part regarding to the first page of instructions. We will send replacement to you asap.

Q2: Some parts damaged when arrived.

A: Please send clear photos about damaged part to us as attachment, we will check and offer you best solution soon.

Q3: The chair is stuck on lifting or reclining position, and no response when you press the lifting or reclining button.

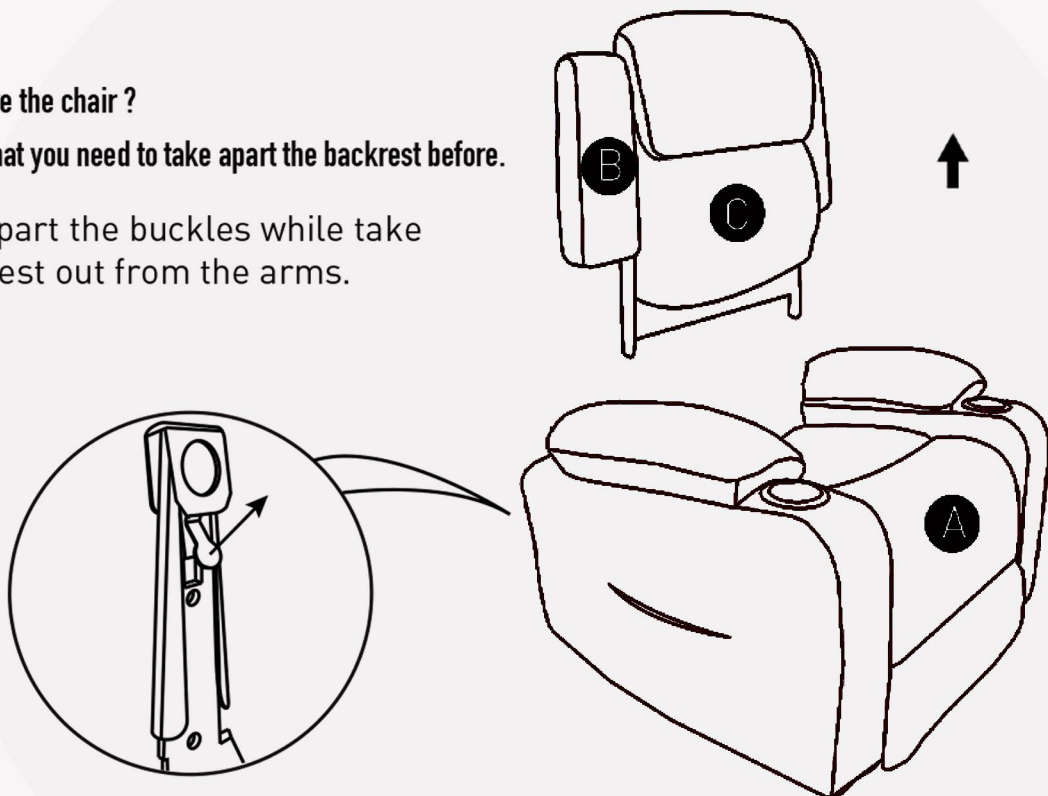
A: Please kindly check if the power cord (F) are connected well with lift motor. Sometimes the power cord (F) may fall off from the motor.

If the connection is good, then check the lift motor if it has some anomaly, like some noise comes out when you press the lift button. If you can make sure the motor is defective, please contact us for replacement.

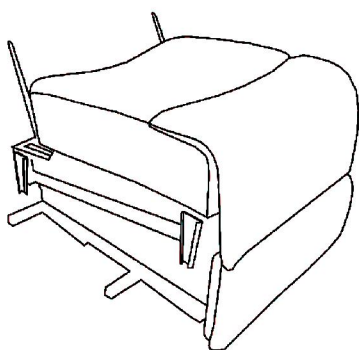
How to remove the chair ?

Please note that you need to take apart the backrest before.

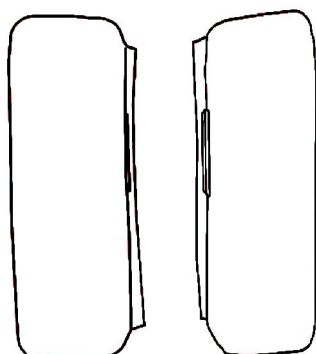
1. Force apart the buckles while take the backrest out from the arms.



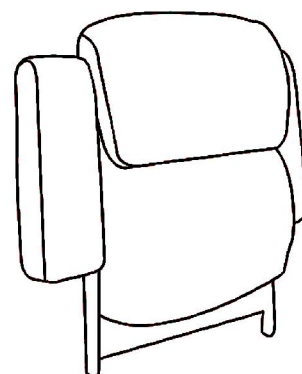
Please make sure you've got everyting lists as following before assembly.



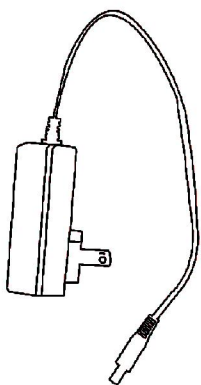
A Chair base



B Sofa back ear



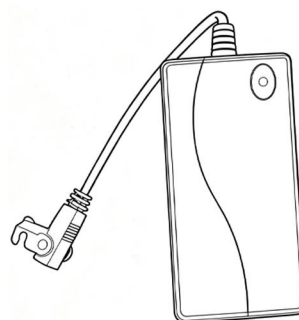
C Backrest



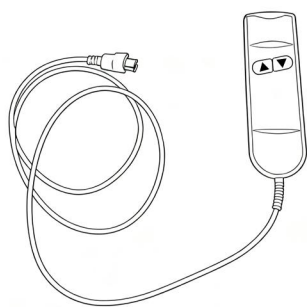
D Power cord



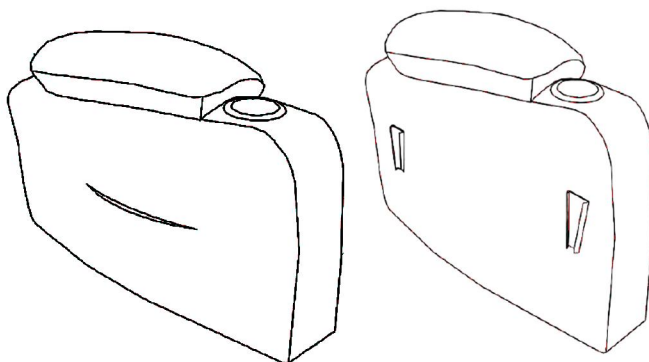
E Remote control



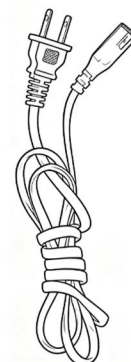
F Power Source



G Lift and lower remote control

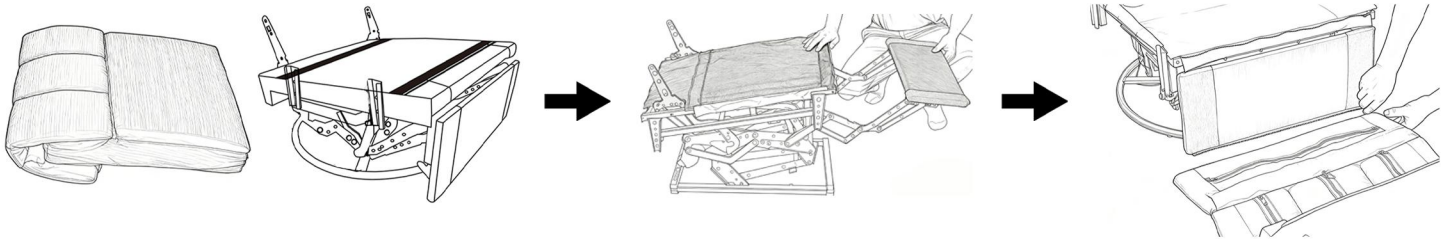


H Handrail

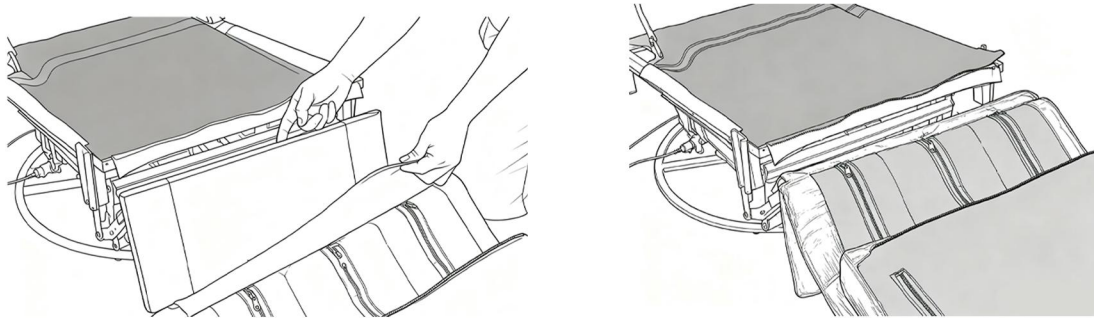


I Power cord for the base

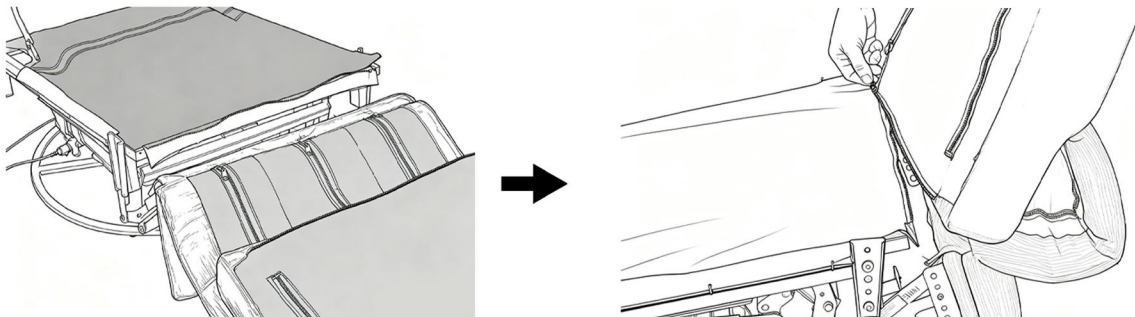
1. Pull the front of the stand by hand, and link the foot pad with the stand using a zipper.



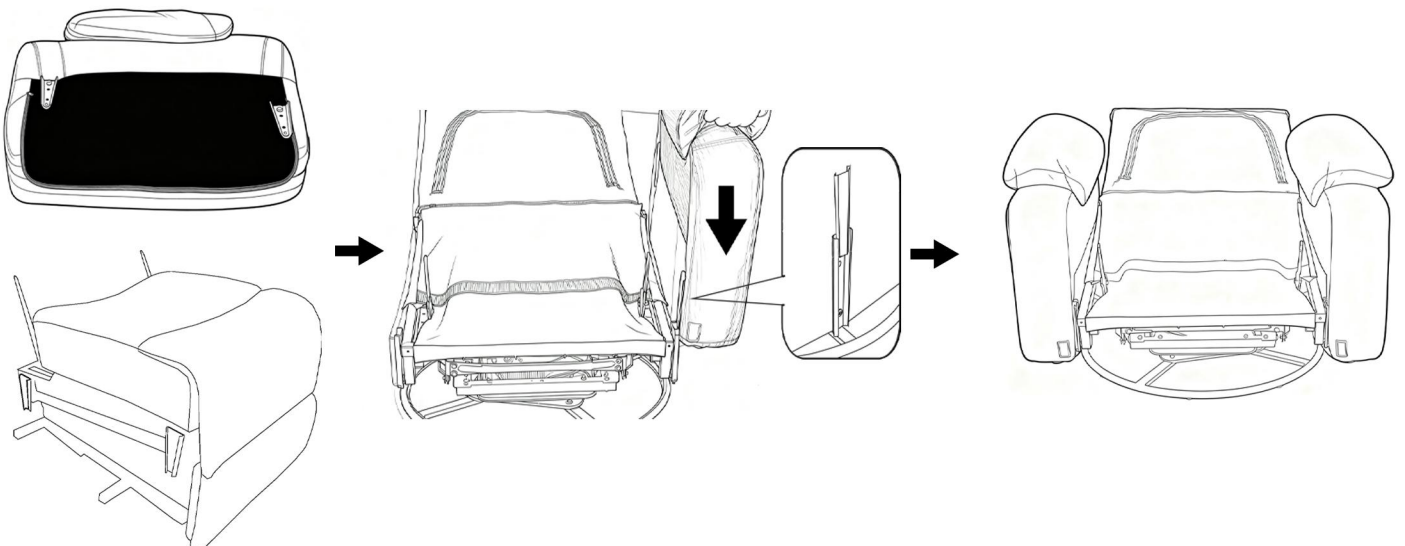
2. Use Velcro to fix the foot pad and foot stand



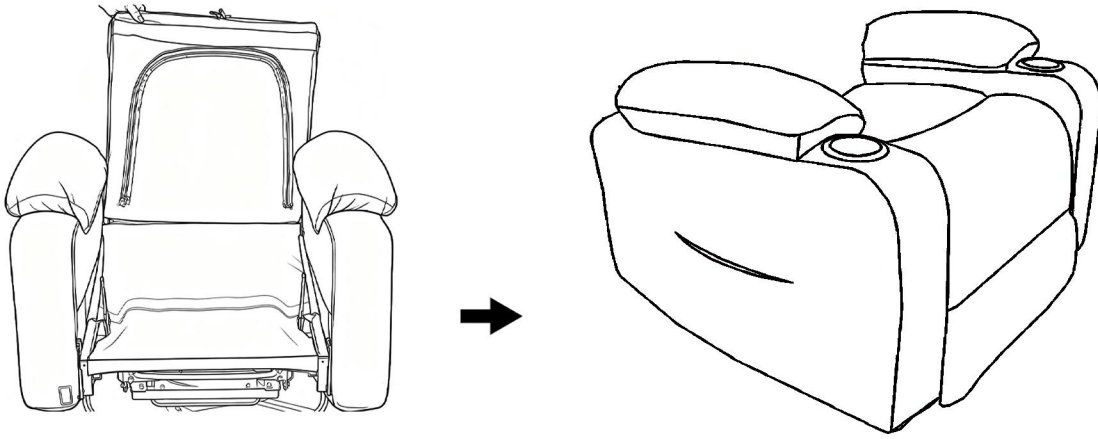
3. The front of the cushion is fixed with the bracket zipper, and then use the remote control to restore the bracket.



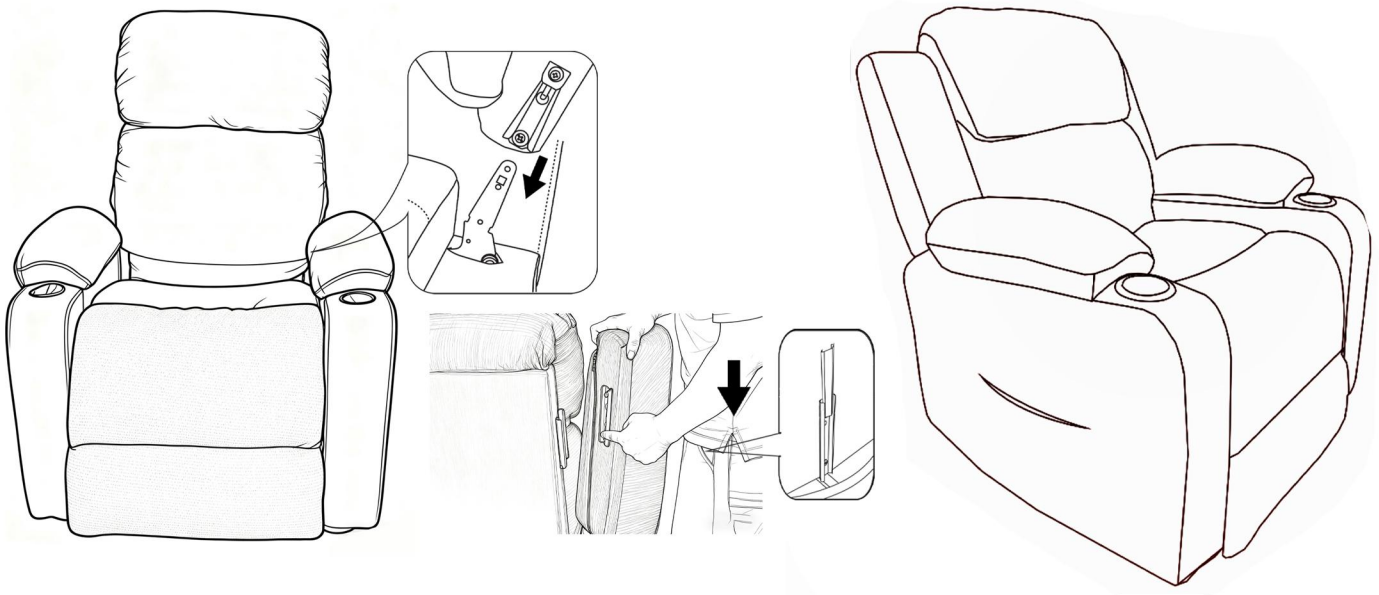
4. Buckle the armrests on both sides with the seat bracket.



5. The cushion and bracket use Velcro fixed.



6. After attaching the backrest, assemble the ears of the backrest.



7. Plug the same color, insert the massage remote control and power cord.

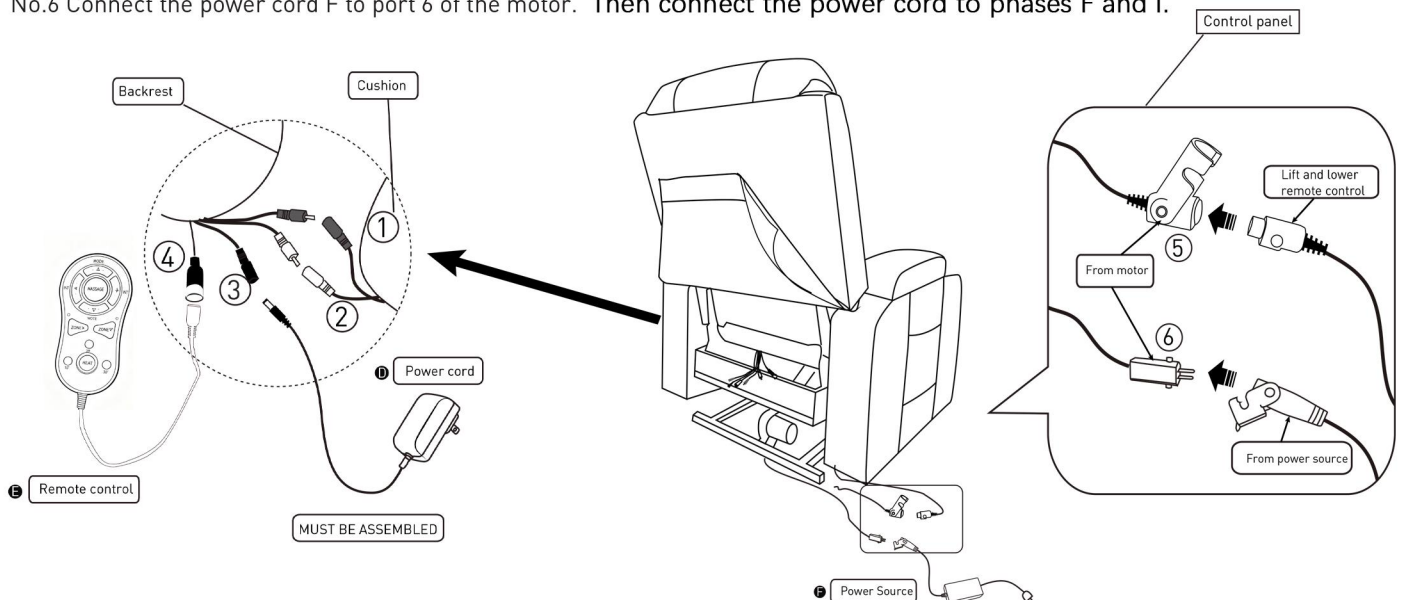
No.1 and No.2 wire connect with the backrest and chair base. Linking within the same color family

No.3 wire connects with backrest and power cord(D).

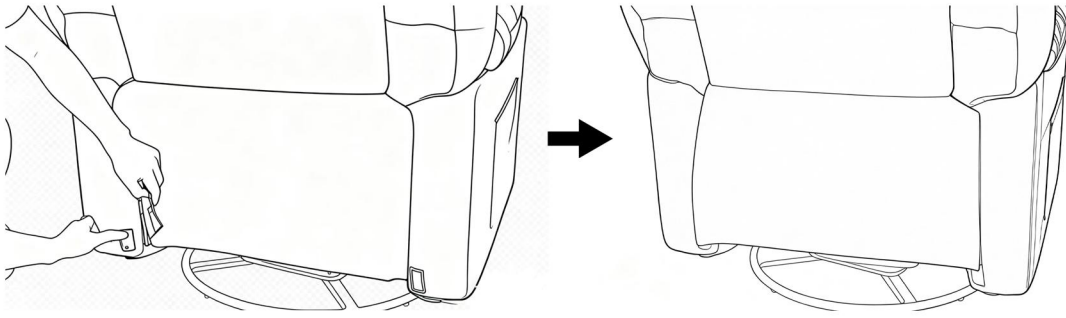
No.4 Link massage remote control(E).

No.5 The up-down remote control G is connected to port 5 of the motor.

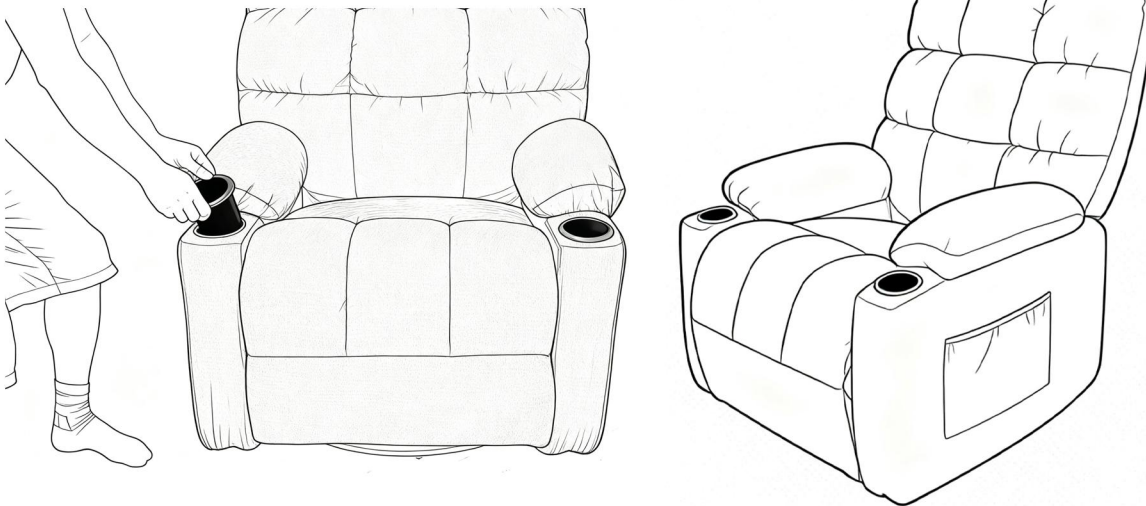
No.6 Connect the power cord F to port 6 of the motor. Then connect the power cord to phases F and I.



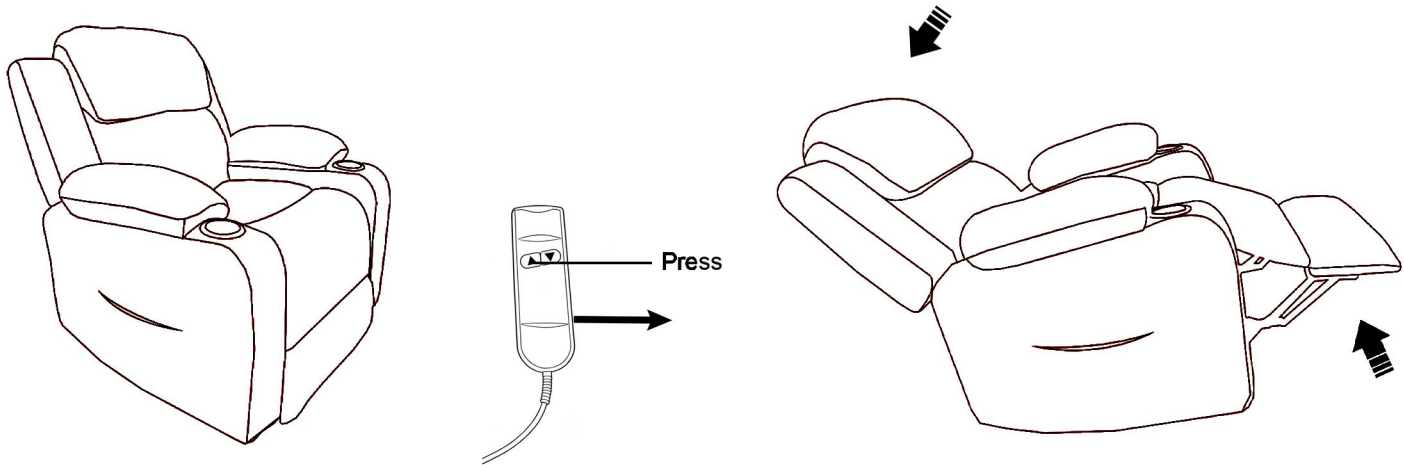
8. Fix the back cloth on the Velcro



9. Insert the pail into the armrest



How to recline?



How to get footrest latch down and stand?

