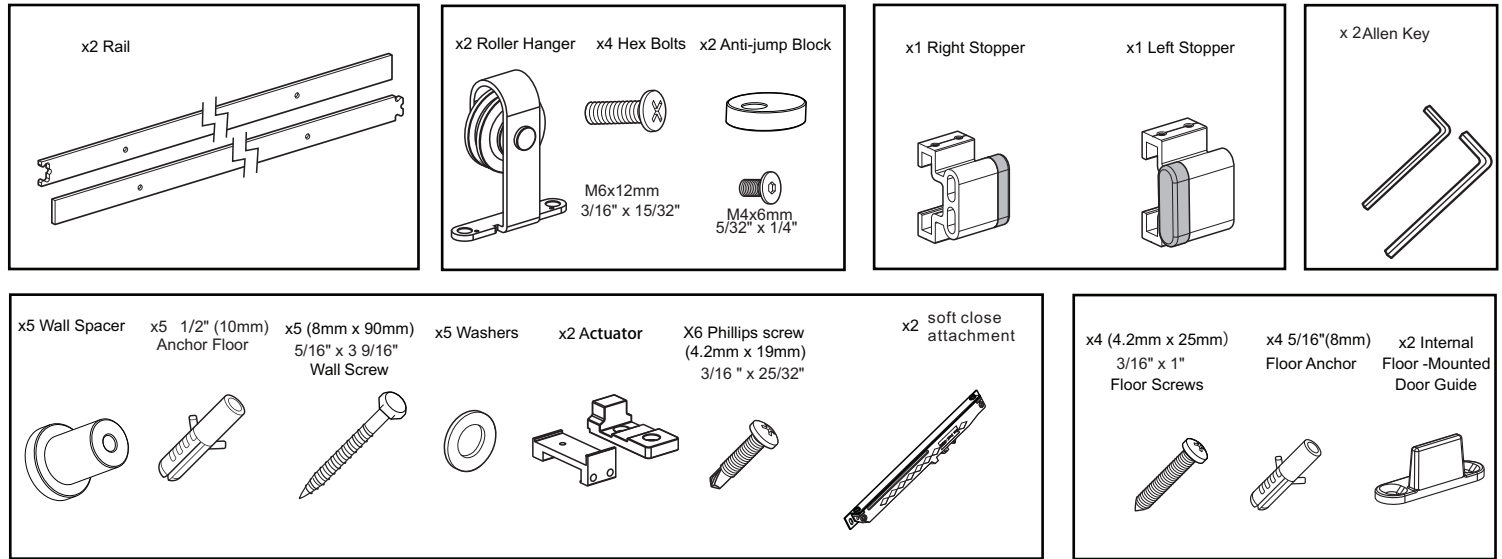
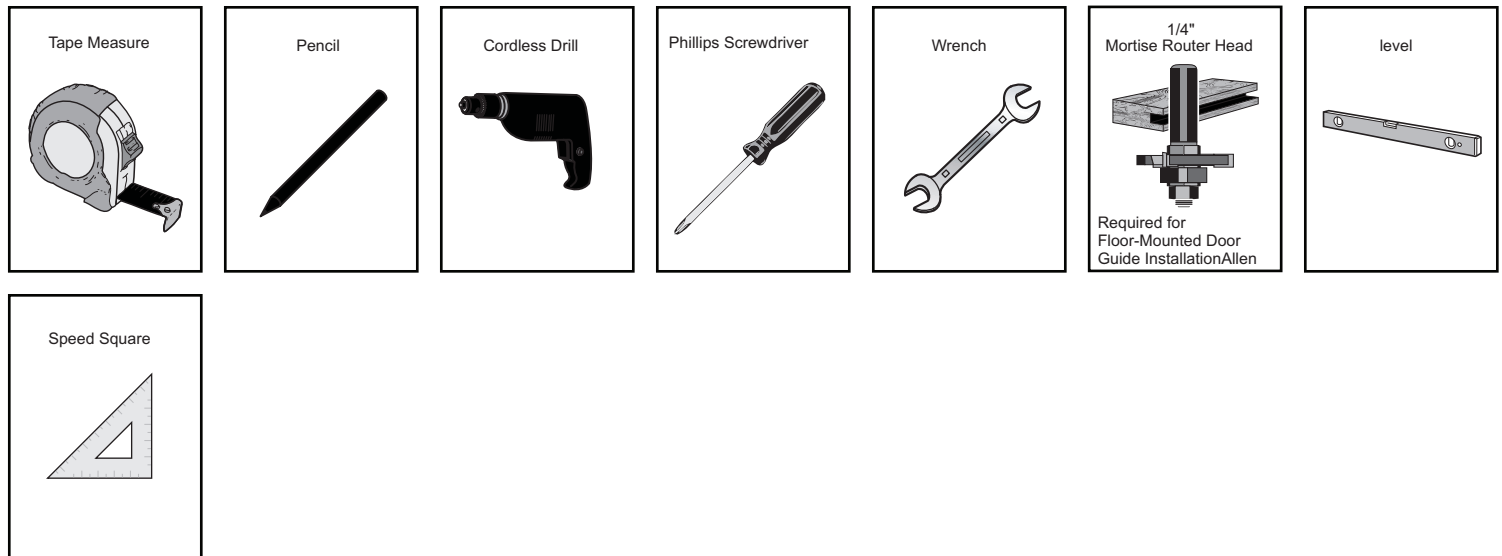


# BARN DOOR HARDWARE KIT TSQ13BK-6FT+TKM04 INSTALLATION GUIDE

## Main Components



## Tools Required



## IMPORTANT: BEFORE YOU BEGIN

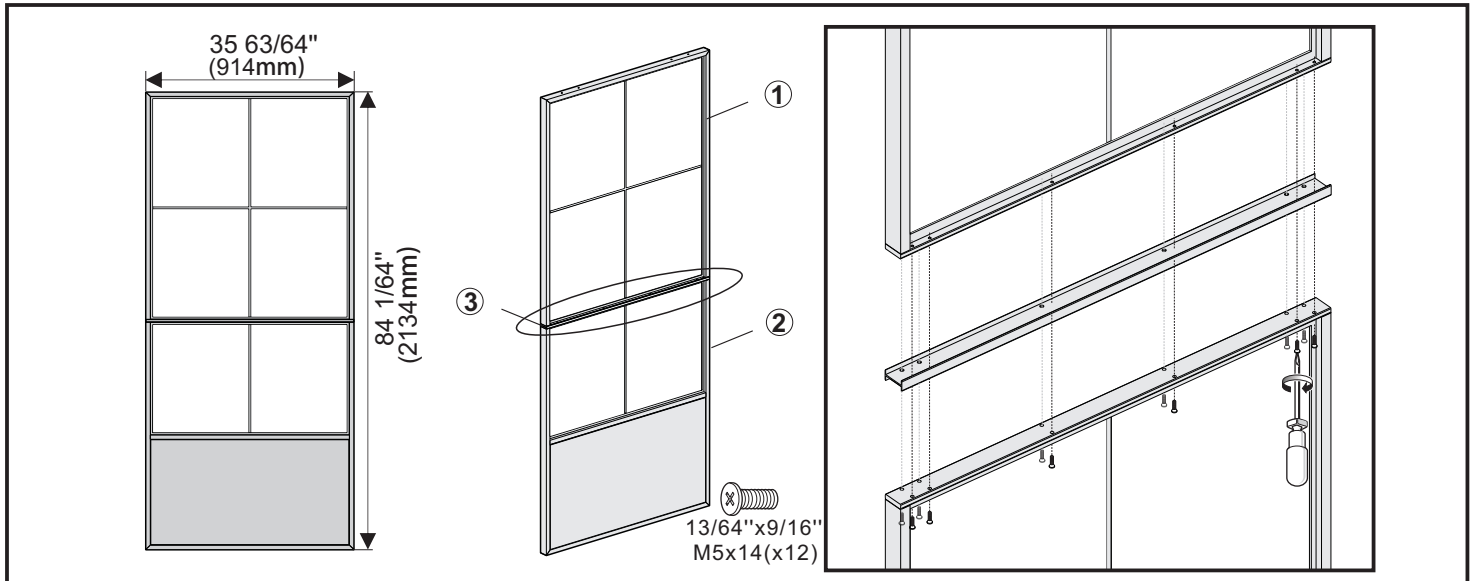
IF INSTALLING DIRECTLY INTO A NON-CONCRETE WALL, DO NOT ATTEMPT TO INSTALL THE RAIL SOLELY TO THE DRYWALL OR ANY WALL SURFACE AS THIS MAY NOT SUPPORT THE WEIGHT OF THE RAIL AND MOUNTED DOOR. THE RAIL MUST BE INSTALLED ONTO A PIECE OF SOLID WOOD BLOCKING (PACKAGE NOT INCLUDED) USING MOUNTING SCREWS (PACKAGE NOT INCLUDED). ENSURE THE SOLID WOOD BLOCKING IS SECURED INTO THE STRUCTURAL SURFACE. USE A STUD FINDER WHERE NECESSARY TO LOCATE STUDS AND SECURE SAFELY. TYPICAL SOLID WOOD BLOCKING SHOULD BE 81 3/4" x 5 1/2" x 7/8".

NOTE, SEPARATE BOLTS ARE PROVIDED FOR 1 3/8" DOORS AND LONGER BOLTS PROVIDED FOR 1 3/4" DOORS. IF INSTALLING WITH THE INTERNAL FLOOR-MOUNTED DOOR GUIDE, THE DOOR MUST BE MORTISED 1/4" WIDE X 3/4" DEEP CENTRALLY.

# BARN DOOR HARDWARE KIT TSQ13BK-6FT+TKM04 INSTALLATION GUIDE

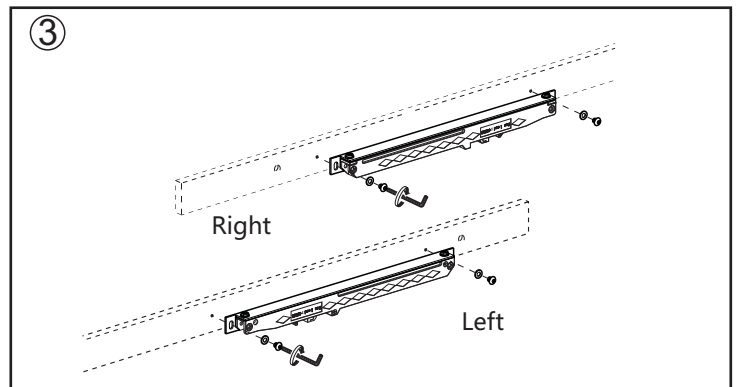
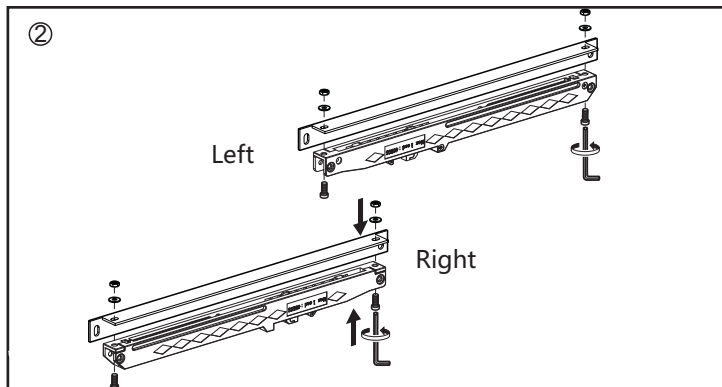
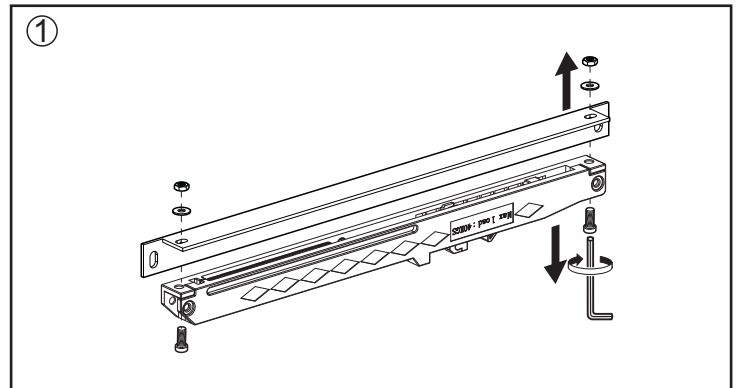
## Step 1. Door Preparation

The door is divided into three parts. Please connect ① and ② by ③ and fixed with 13/64" x 9/16" screws.



## Step 2. Soft Close Installation

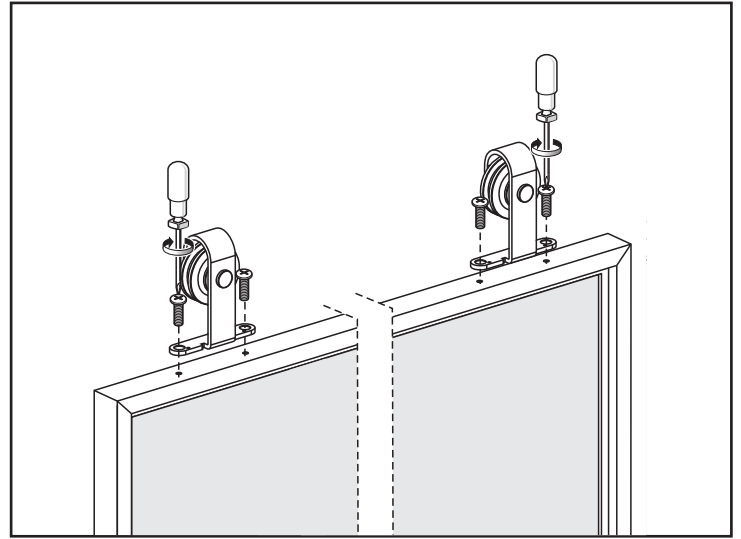
Unscrew the screw with a wrench firstly. Change the soft closes to the correct direction, then tighten and install them on the rail.



# BARN DOOR HARDWARE KIT TSQ13BK-6FT+TKM04 INSTALLATION GUIDE

## Step 3. Door Preparation – Strap Installation

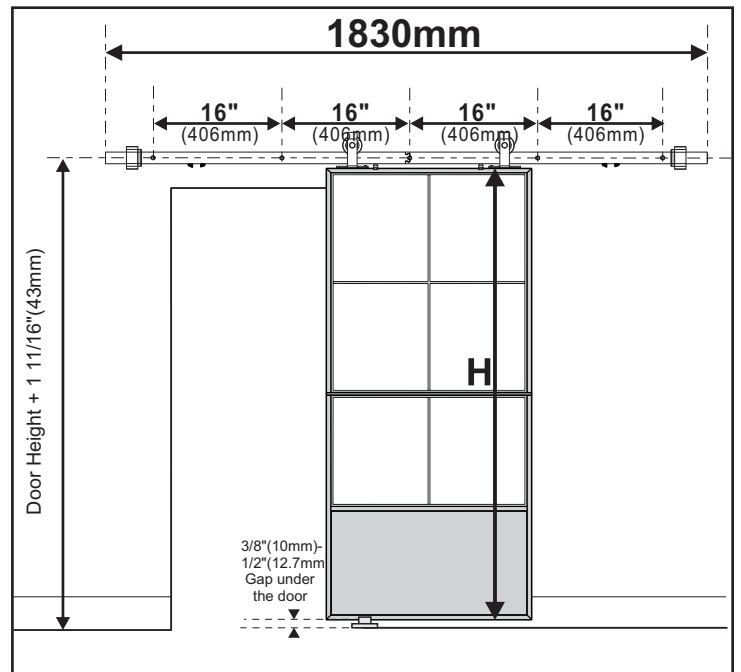
Install the rollers on the reserved hole of the top of door by 3/16"x15/32" screw.



## Step 4. CONCRETE Wall Preparation<sup>1</sup>

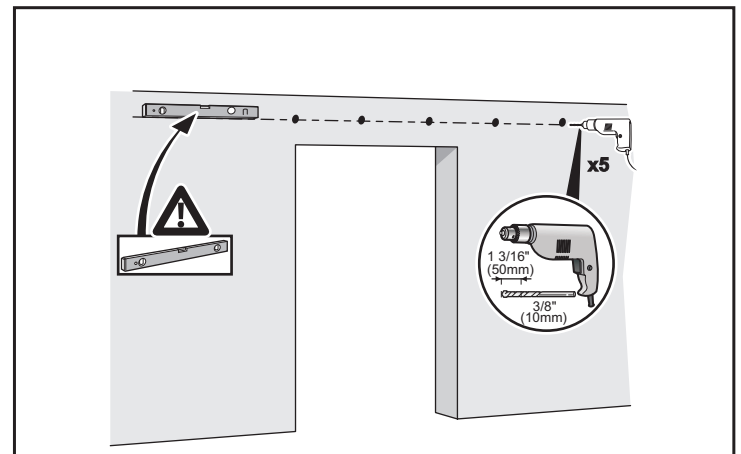
Position the rail by measuring up from the door height (H) + 1 11/16" to the centre of the track. Also ensure a gap of 3/8" - 1/2" at the bottom. Ensure the rail is level and leave a minimum of 2" from the end of the rail to the side of the opening.

If installing with an opening for 80" standard door size, remove the top trim and cut the side trim horizontally along the height of the opening.



## Step 5. CONCRETE Wall Preparation<sup>2</sup>

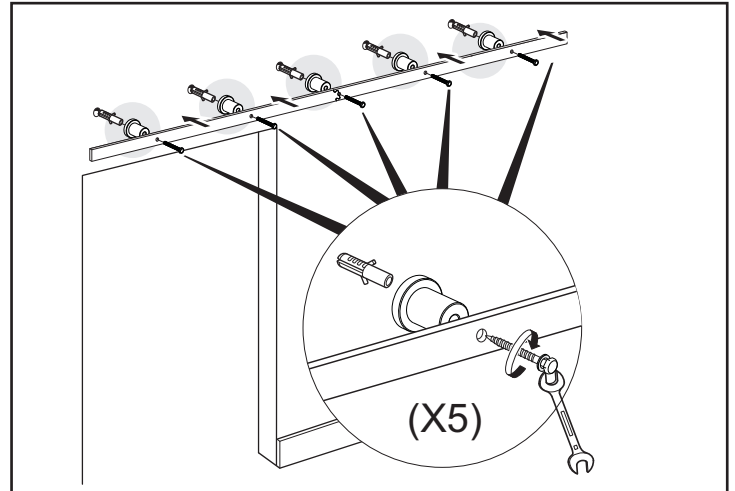
Position the rail in place ensuring that it is level, mark the holes on the rail using a pencil and pre-drill 3/8" holes into the concrete.



# BARN DOOR HARDWARE KIT TSQ13BK-6FT+TKM04 INSTALLATION GUIDE

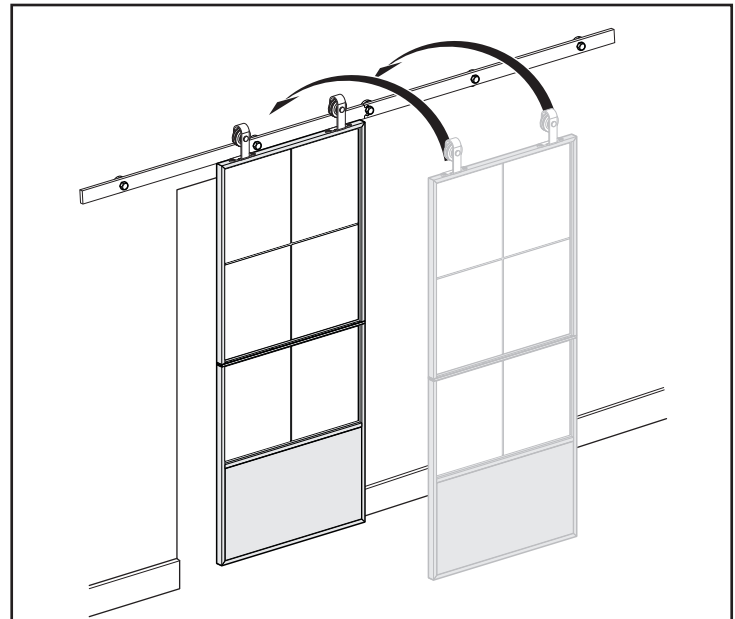
## Step 6. CONCRETE Rail Installation

When installing directly into concrete, align the spacers to holes, insert using the provided anchors and hex bolts (with washers). Ensure to un-screw to separate the hex bolt and anchor to install correctly, securing with a wrench.



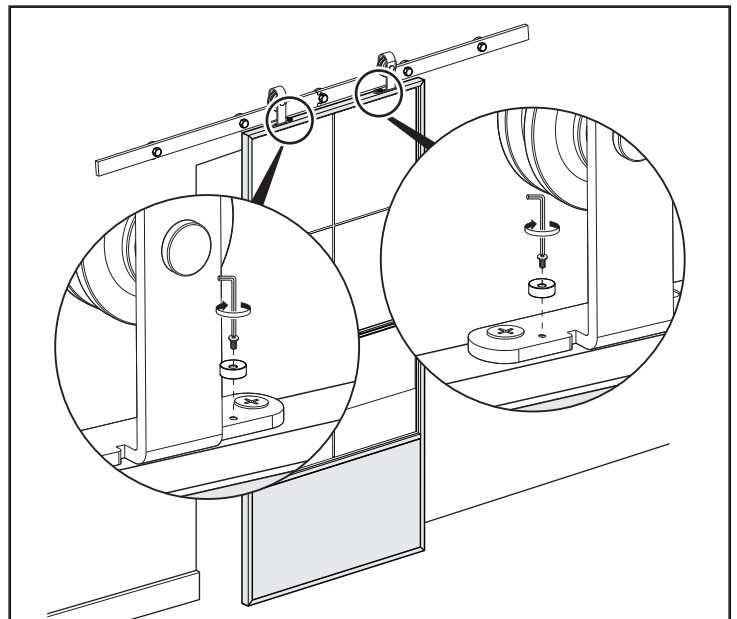
## Step 7. Hanging the Door

Place the assembled door onto the secured rail and tighten



## Step 8. Door Preparation - Anti-jump block Installation

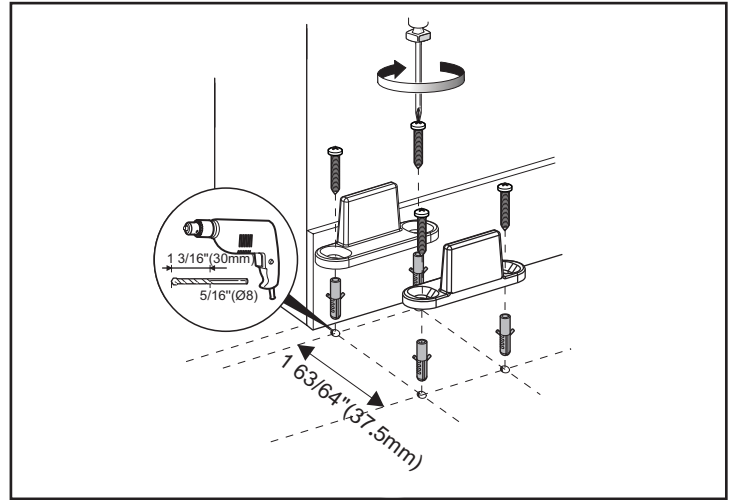
Install the anti-jump on the rollers by 5/32" x1/4" screw to protect the door from touching the rail when sliding the door.



# BARN DOOR HARDWARE KIT TSQ13BK-6FT+TKM04 INSTALLATION GUIDE

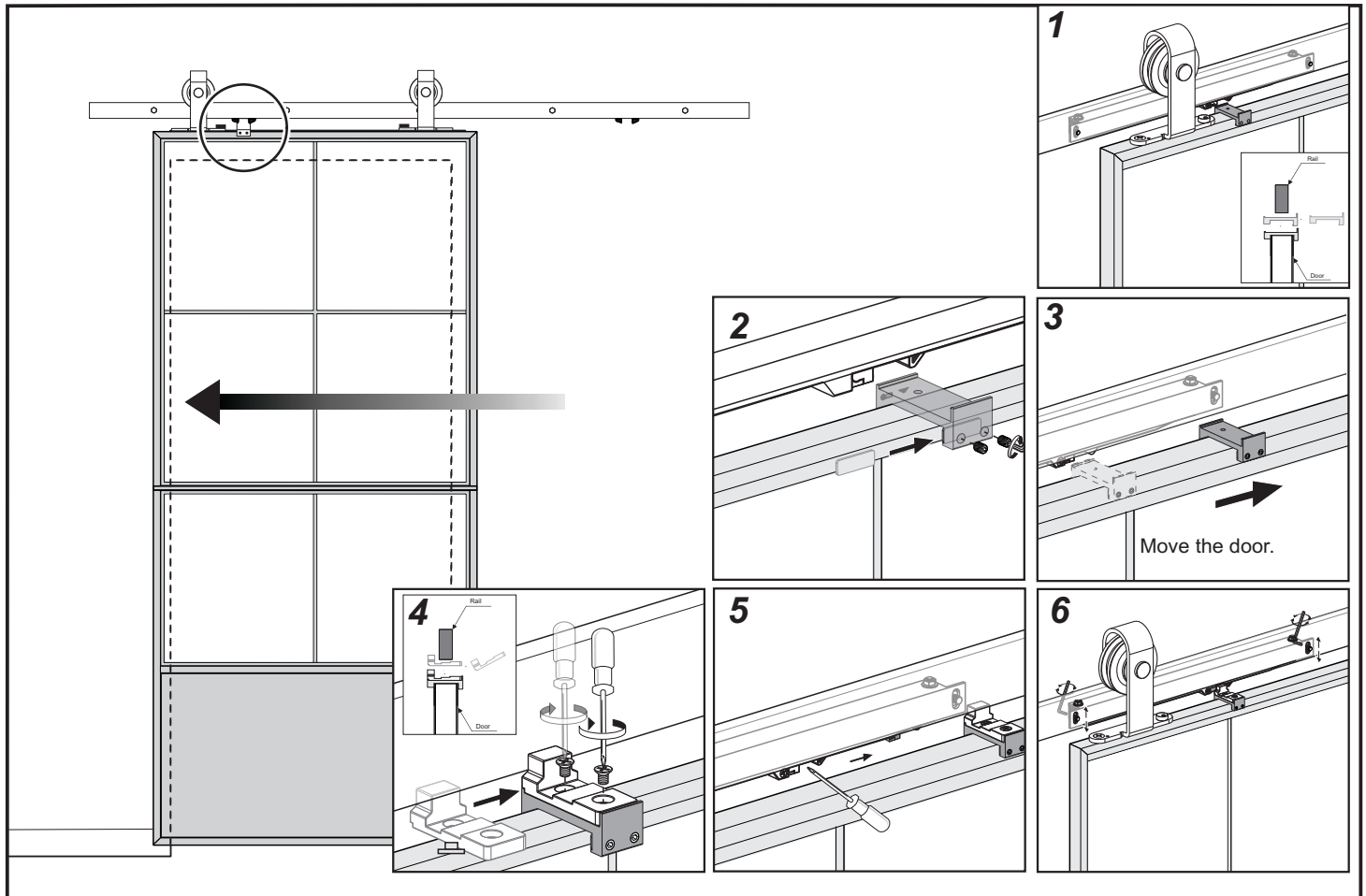
## Step 9. Floor-Mounted Door Guide Installation

Once the door is plumb, position the floor-mounted door guide inside the mortised door, line up close to the opening. Slide the door side-to-side to ensure functionality for final placement then mark holes with a pencil and pre-drill 5/16" holes. If drilling directly into a concrete floor, use the provided anchors.



## Step 10. Install right left close attachment

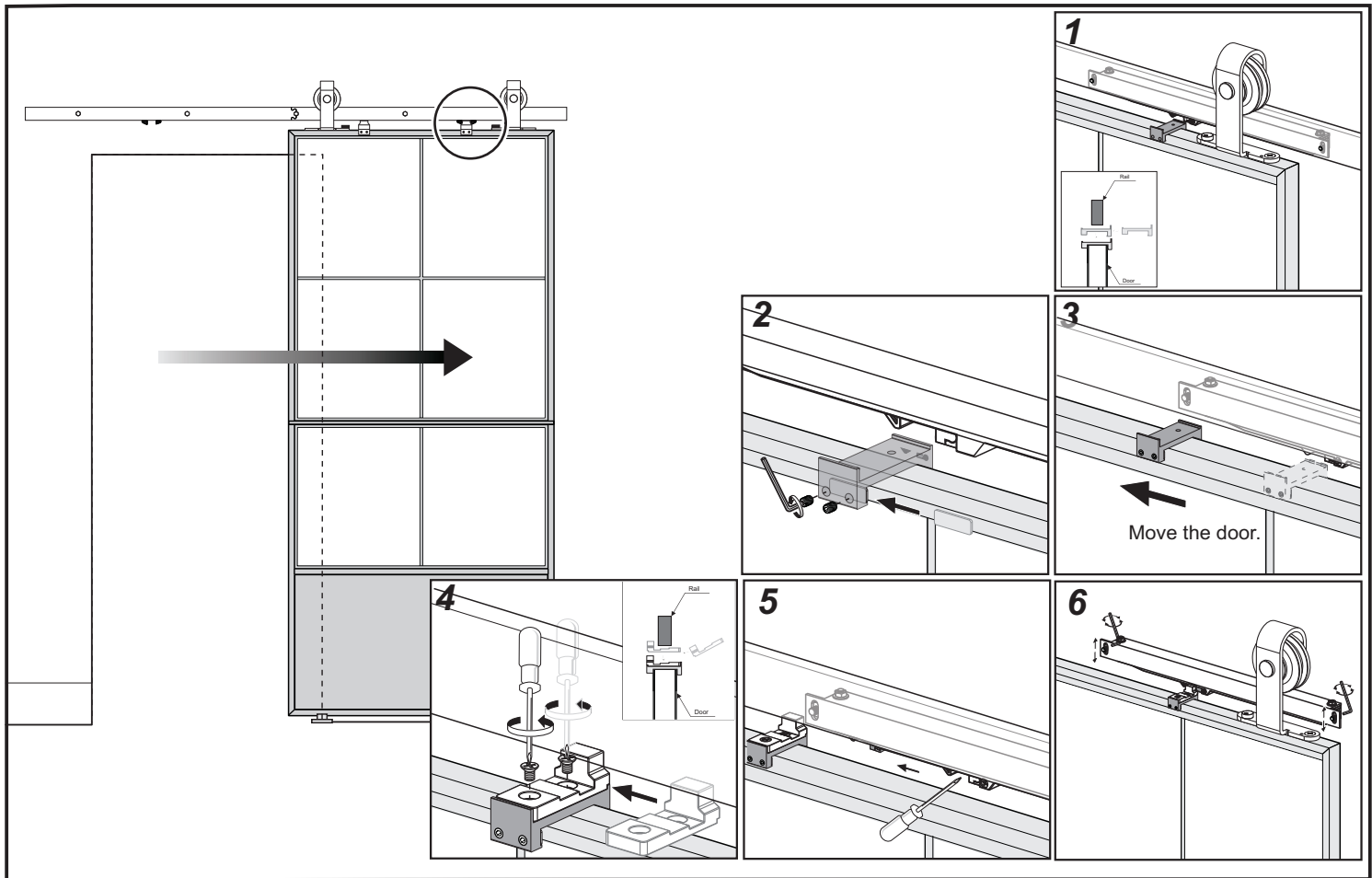
1. Push the door to the left, push it to the required position.  
place the actuator connector in the middle of the actuator claw.
2. Insert the washers and tighten it with a wrench.
3. Push the door to the right and install the actuator on the connector.
4. Move the actuator claw to the right, adjust the actuator to a limited position.  
adjust the height of the soft close, and make sure it works.



# BARN DOOR HARDWARE KIT TSQ13BK-6FT+TKM04 INSTALLATION GUIDE

## Step 11. Install right soft close attachment

1. Push the door to the right, push it to the required position.  
place the actuator connector in the middle of the actuator claw.
2. Insert the washers and tighten it with a wrench.
3. Push the door to the left and install the actuator on the connector.
4. Move the actuator claw to the left, adjust the actuator to a limited position.  
adjust the height of the soft close, and make sure it works.



## Step 12. Stopper Installation

Slide the door closed and to correct position of both stoppers. Using the provided Allen key, tighten into position to complete the installation of the Barn Door Kit.

