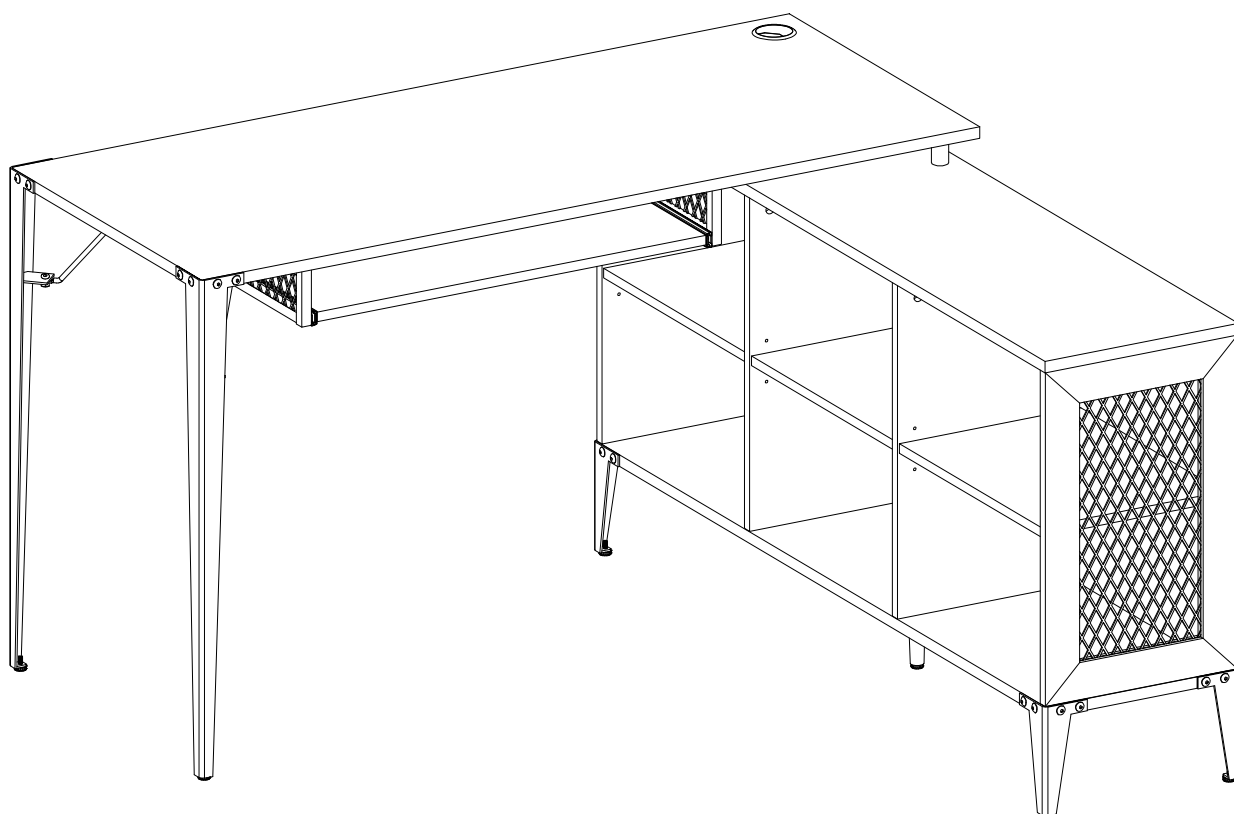
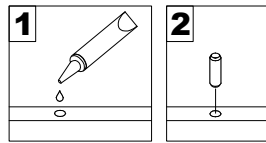


# Assembly Instructions

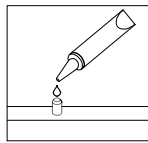


# General Assembly Guidelines

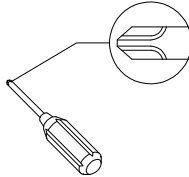
- I. Ensure that all parts and hardware are available before beginning assembly.
- II. Follow each step carefully to ensure the proper assembly of this product.
- III. Two people are recommended for ease in the assembly of this product.
- IV. The three main types of hardware used to assemble this product are : wood dowels , screws and bolts.
- V. The provided glue is to secure wood dowels in place . When first inserting dowels , locate the appropriate hole for the dowel , place a small amount of glue in the hole and insert the dowel . Wipe away excess glue immediately.



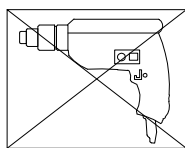
In future assembly steps when dowels are necessary to attach assembly parts together , place a small amount of glue on the end of the dowel before attaching parts together . Wipe away excess glue immediately.



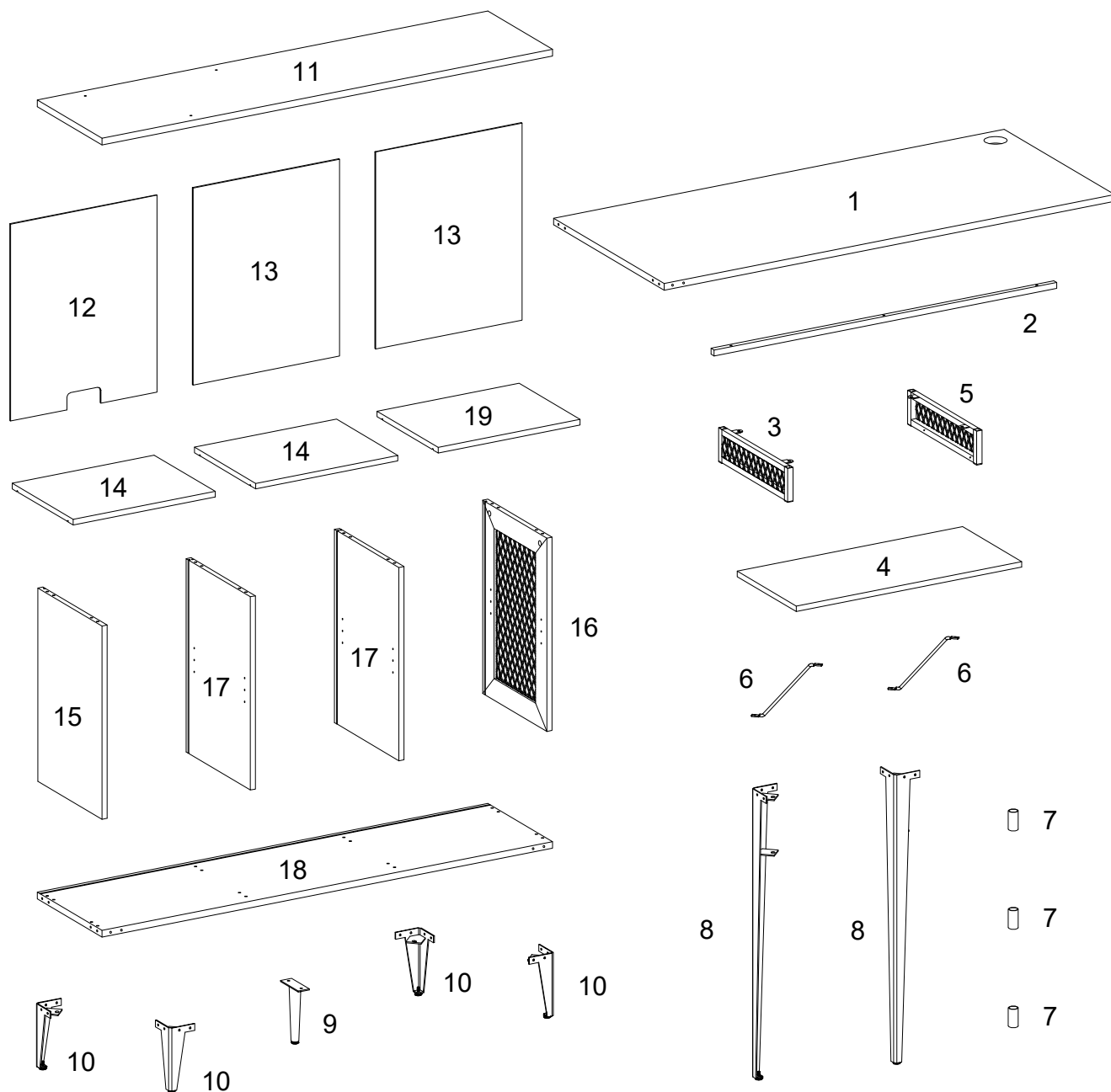
- VI. A Phillips head screwdriver is required for the assembly of this product .



- VII. Power tools should not be used to assemble this product .



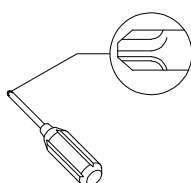
# Parts List



# Hardware List

A		Ø8x30mm	Wooden dowel	16	pcs
B		Ø6x35mm	Cam bolt	8	pcs
C		Ø15x11mm	Cam lock	8	pcs
D			Sticker	8	pcs
E		Ø6x50mm	Screw	8	pcs
F		M 4	Hex Key	1	pc
G		Ø1/4"x12mm	Bolt	38	pcs
H		Ø1/4"x15mm	Bolt	2	pcs
J		Ø1/4"x25mm	Bolt	3	pcs
K			Bolt	3	pcs
L			Nut	2	pcs
M			Wrench	1	pc
N		Ø1/4"x45mm	Bolt	3	pcs
P			Shelf support pin	12	pcs
Q			Plastic wedge	12	pcs
R		Ø3x17mm	Screw	12	pcs
S			Hole cover	1	pc
T			Glue tube	1	pc
U		Ø4x12mm	Screw	8	pcs
V			Drawer slider	1	set

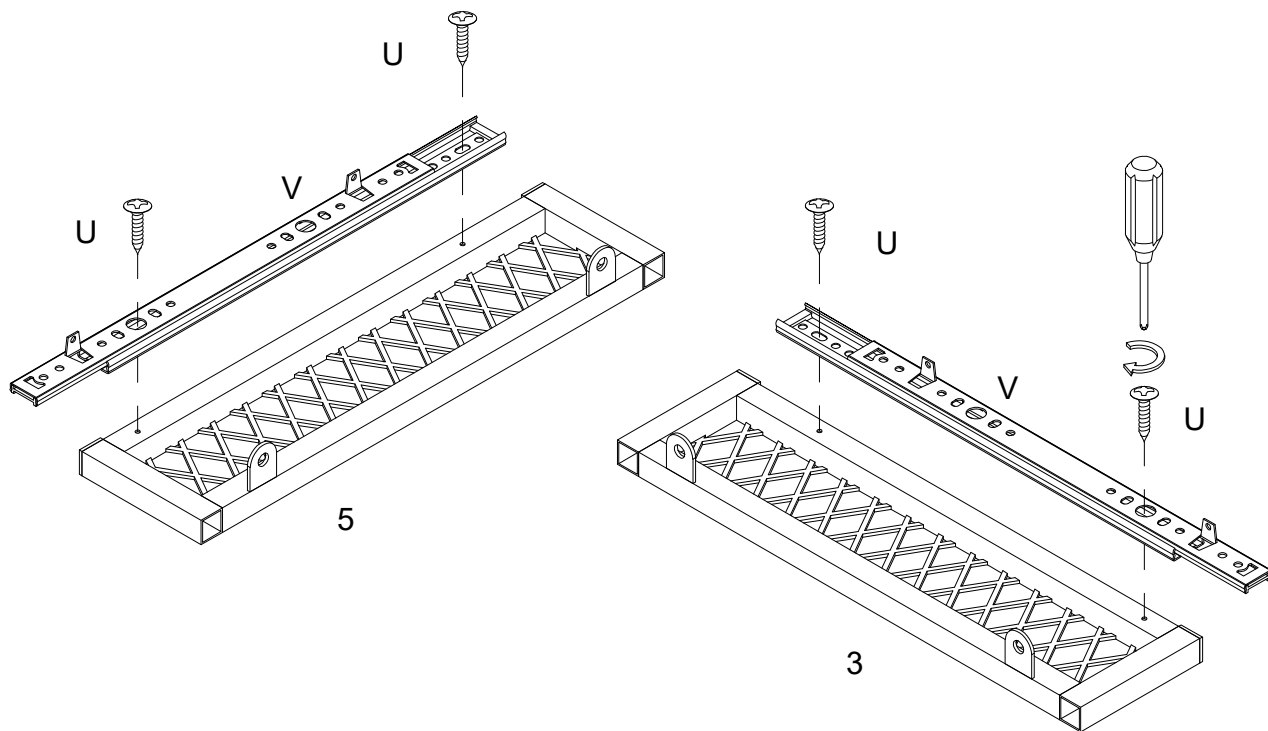
\*Note: This piece comes preassembled for shipping purposes and must be disassembled to complete the desk assembly.



Philips head screwdriver required for assembly  
(not included)

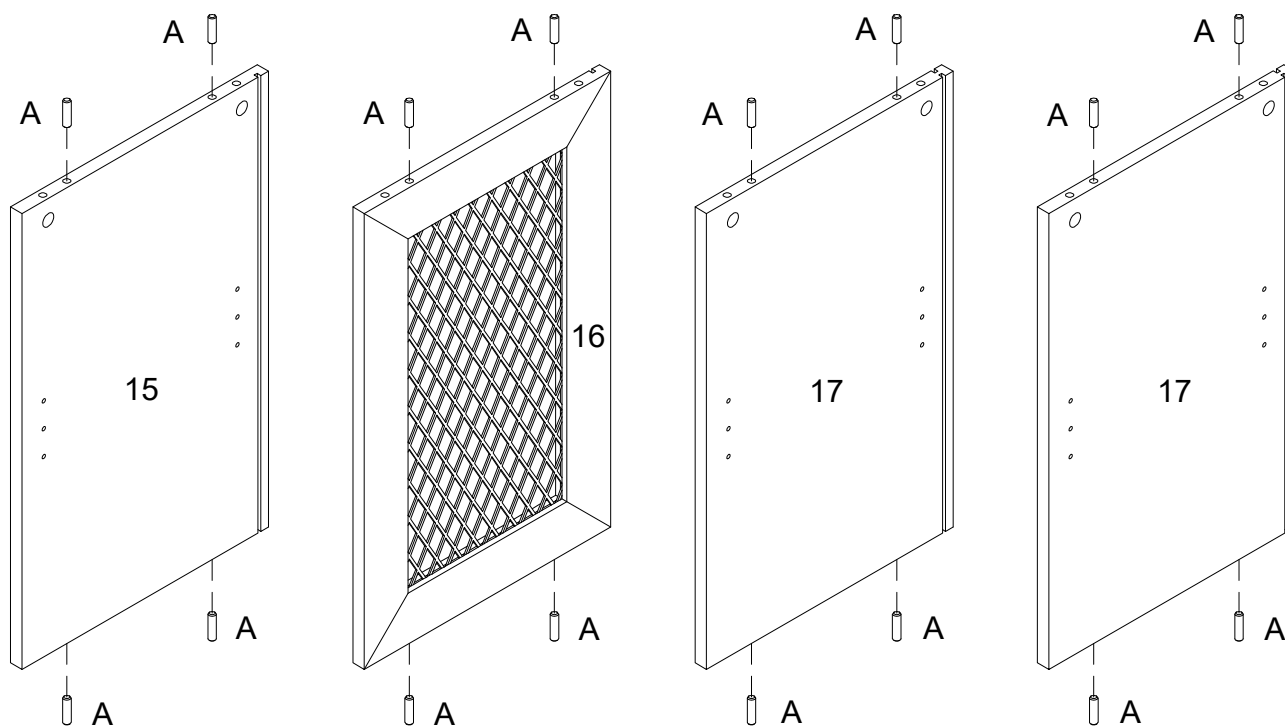
*The hardware quantities listed above are required for proper assembly.  
Some extra hardware may also have been included.*

# Step 1



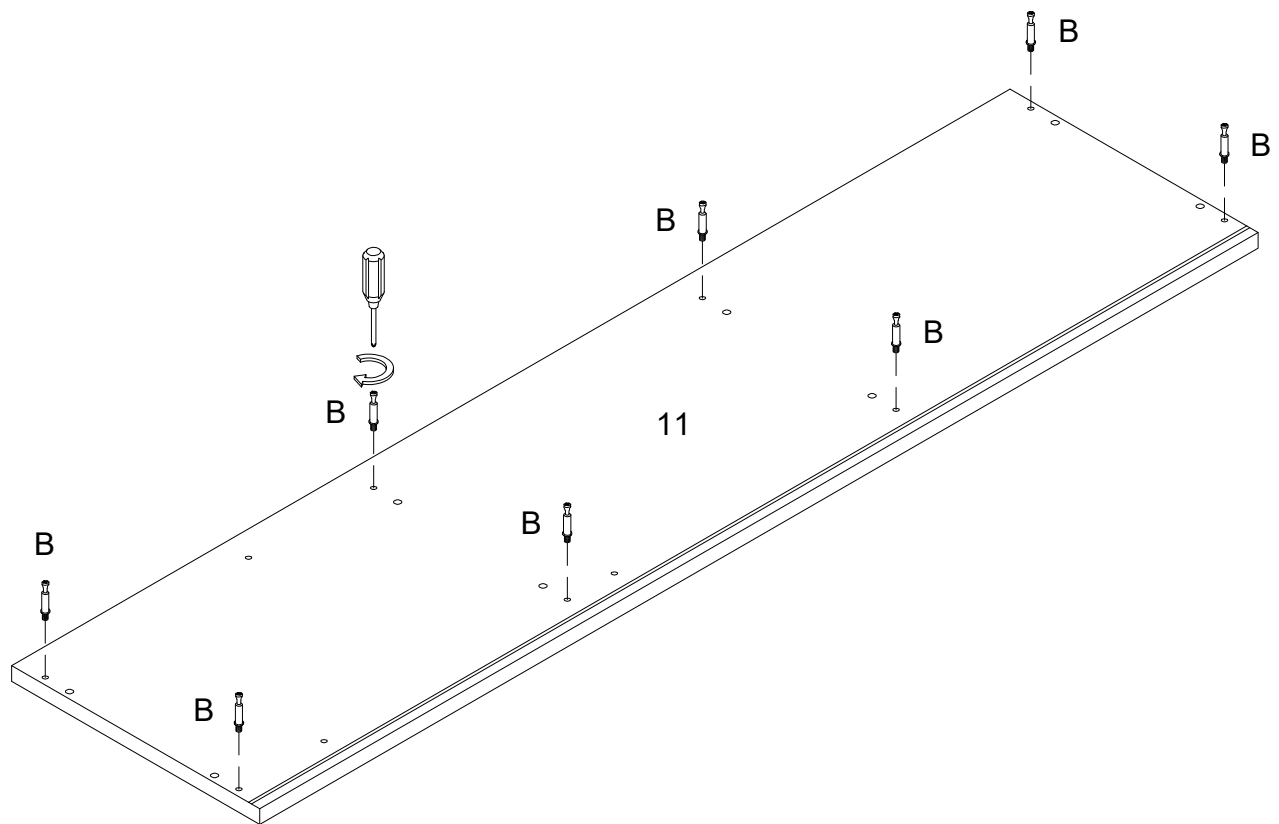
Using screw (U) attach drawer slider (V) to parts (3,5) with Philips head screwdriver as per diagram.

## Step 2



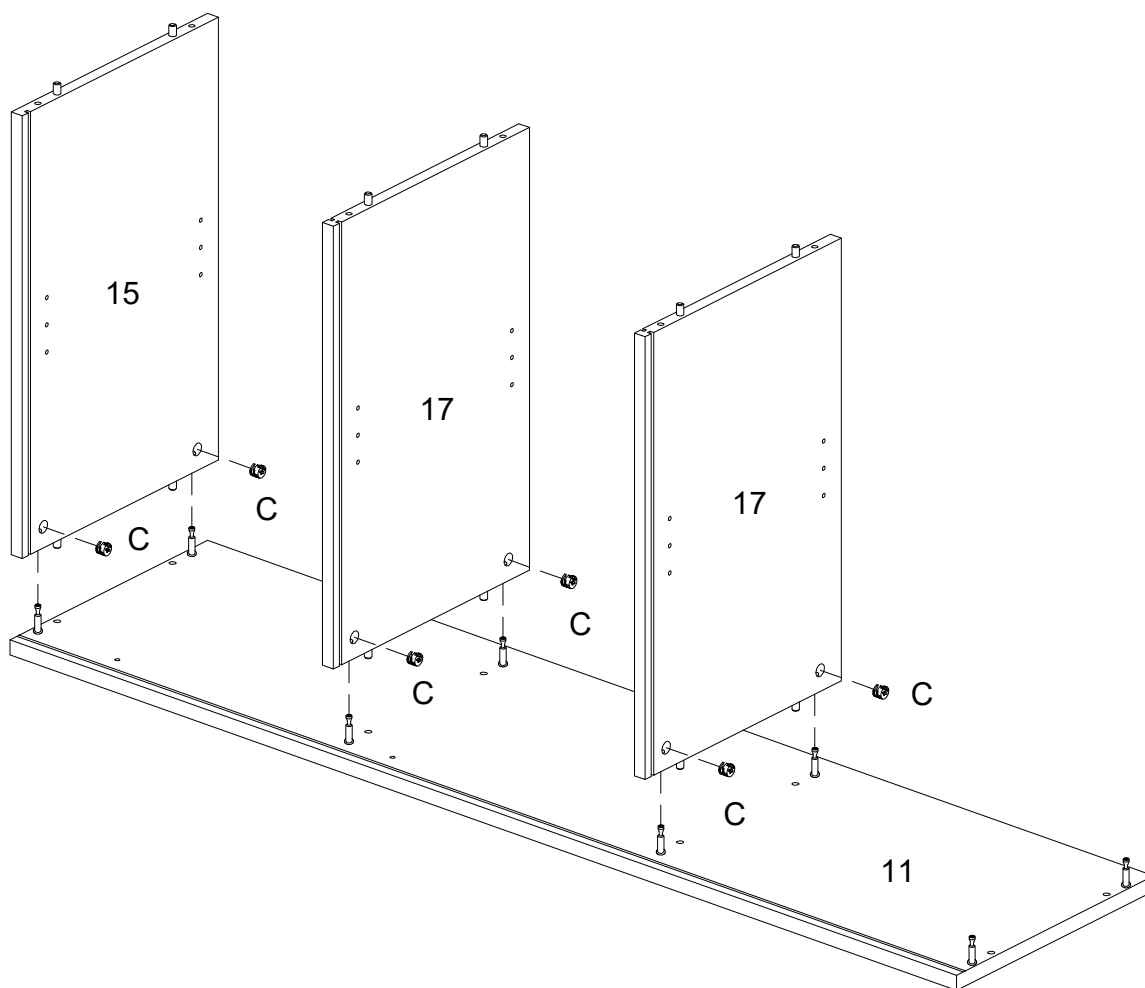
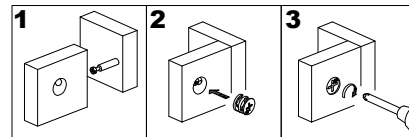
Insert wooden dowel (A) into parts (15,16,17) as per diagram.

## Step 3



Secure cam bolt (B) into part (11) with Philips head screwdriver as per diagram.

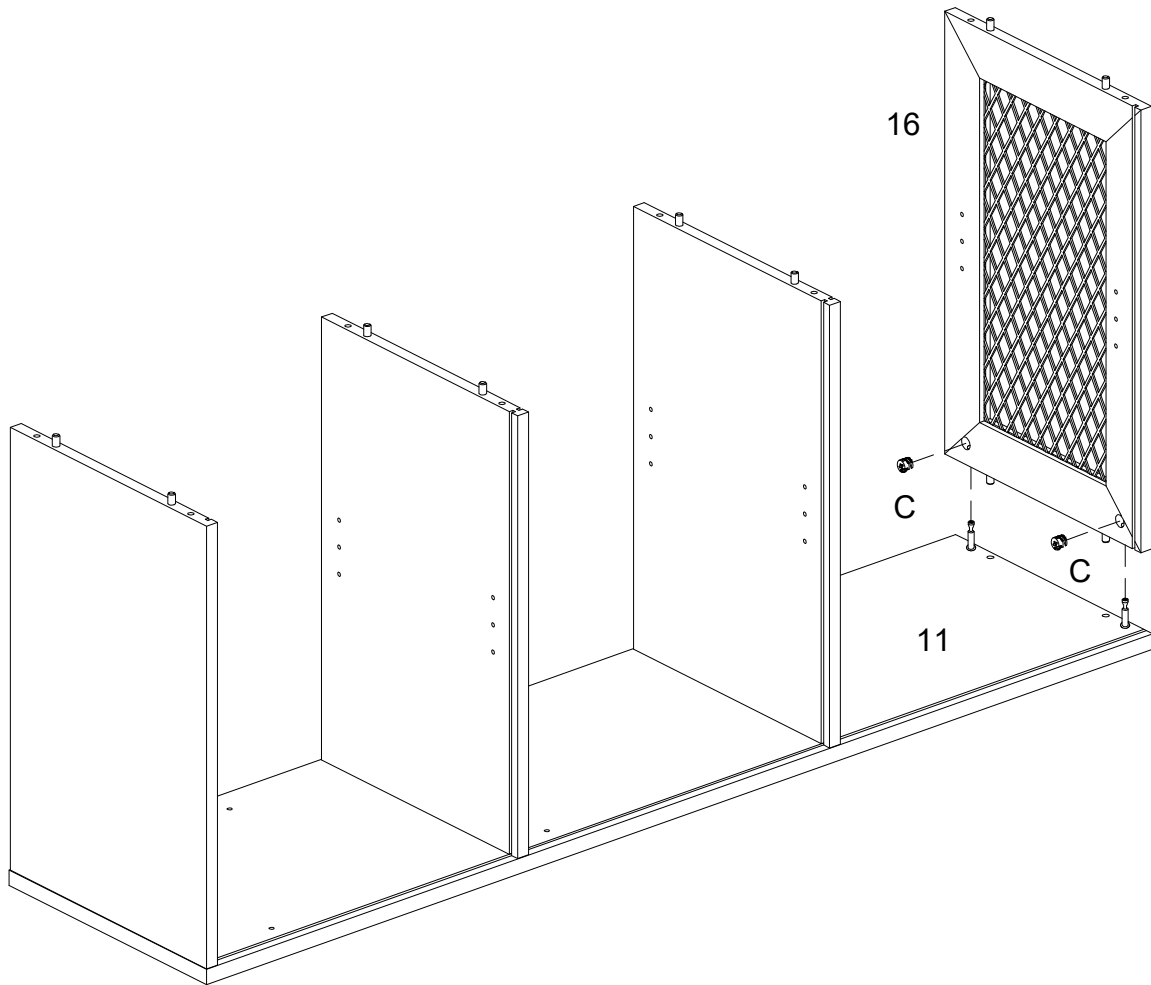
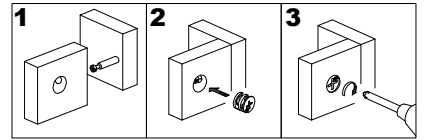
## Step 4



Using cam lock(C) secure parts (15,17) to part (11) with Philips head screwdriver as per diagram.

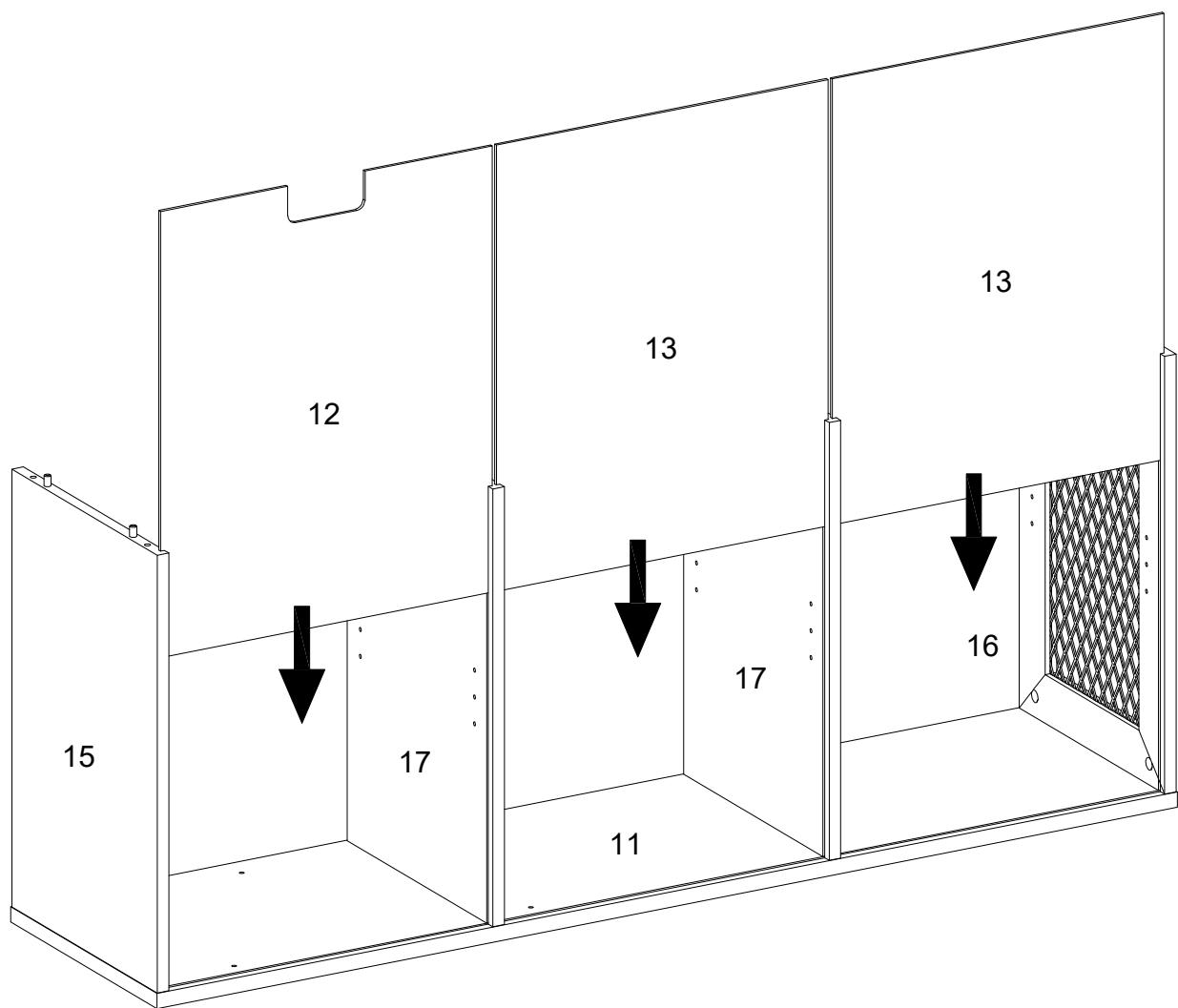


## Step 5



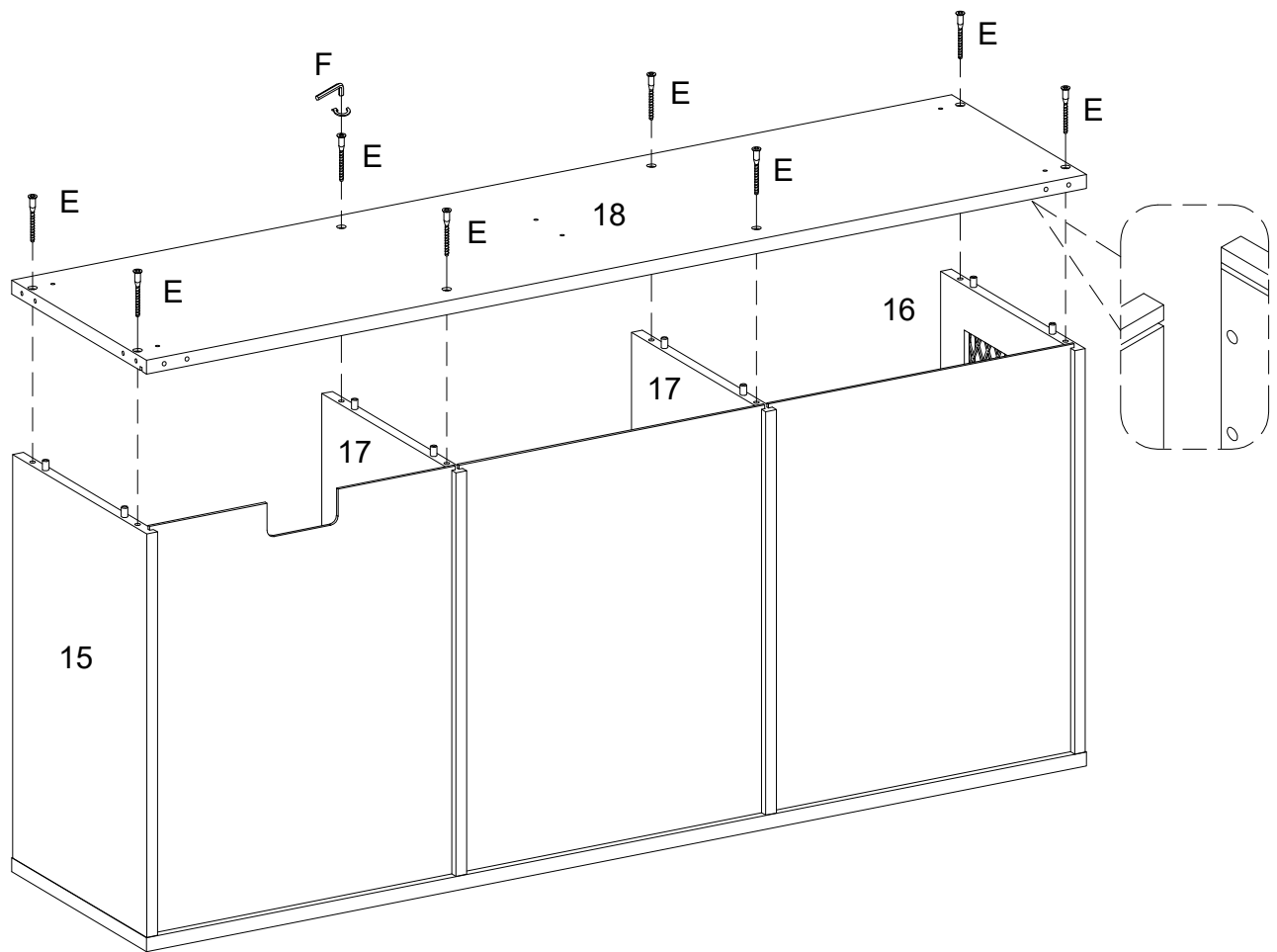
Using cam lock(C) secure part (16) to part (11) with Philips head screwdriver as per diagram.

## Step 6



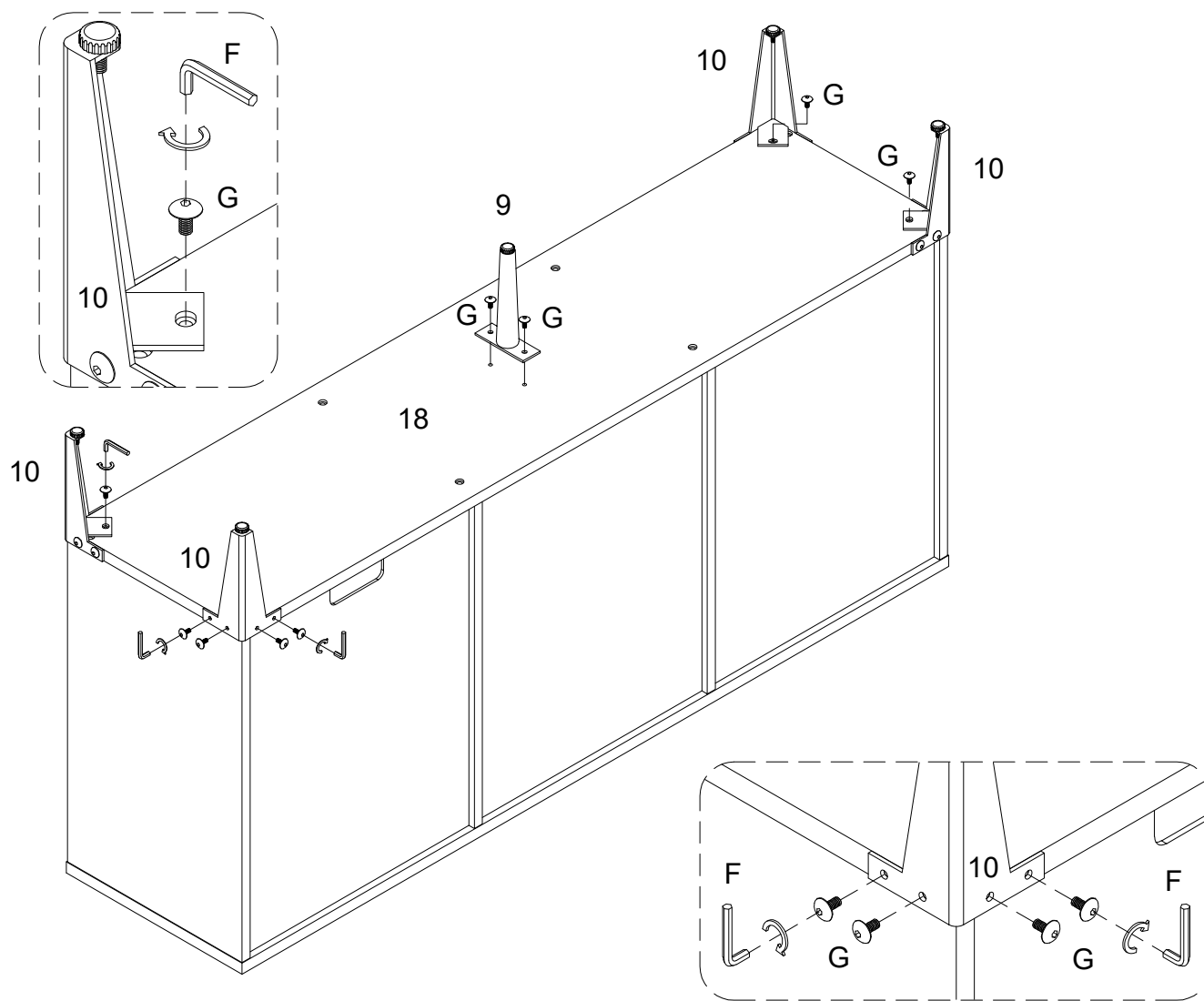
Put parts (12,13) as per diagram.

## Step 7



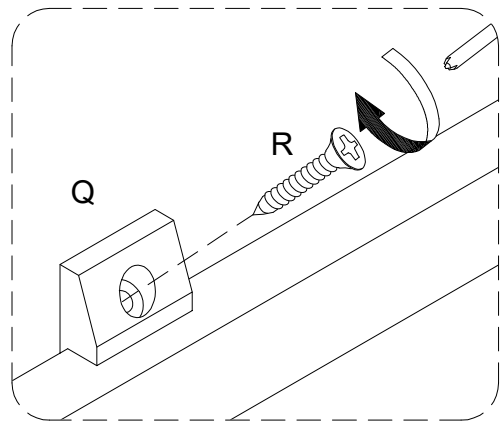
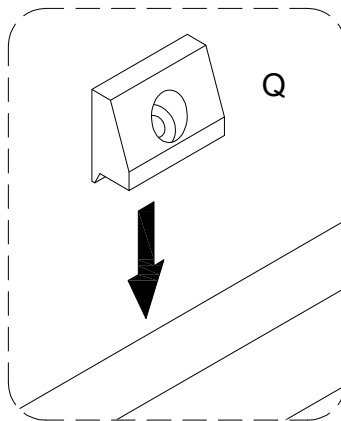
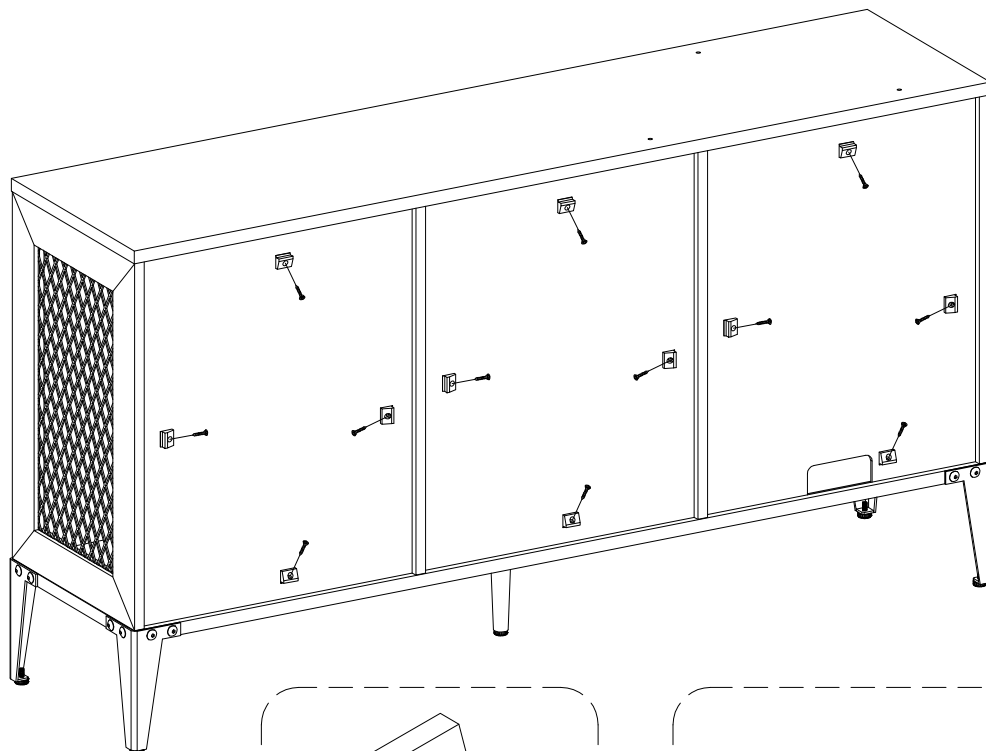
Using screw (E) attach part (18) into parts (15,16,17) with hex key (F) as per diagram.

## Step 8



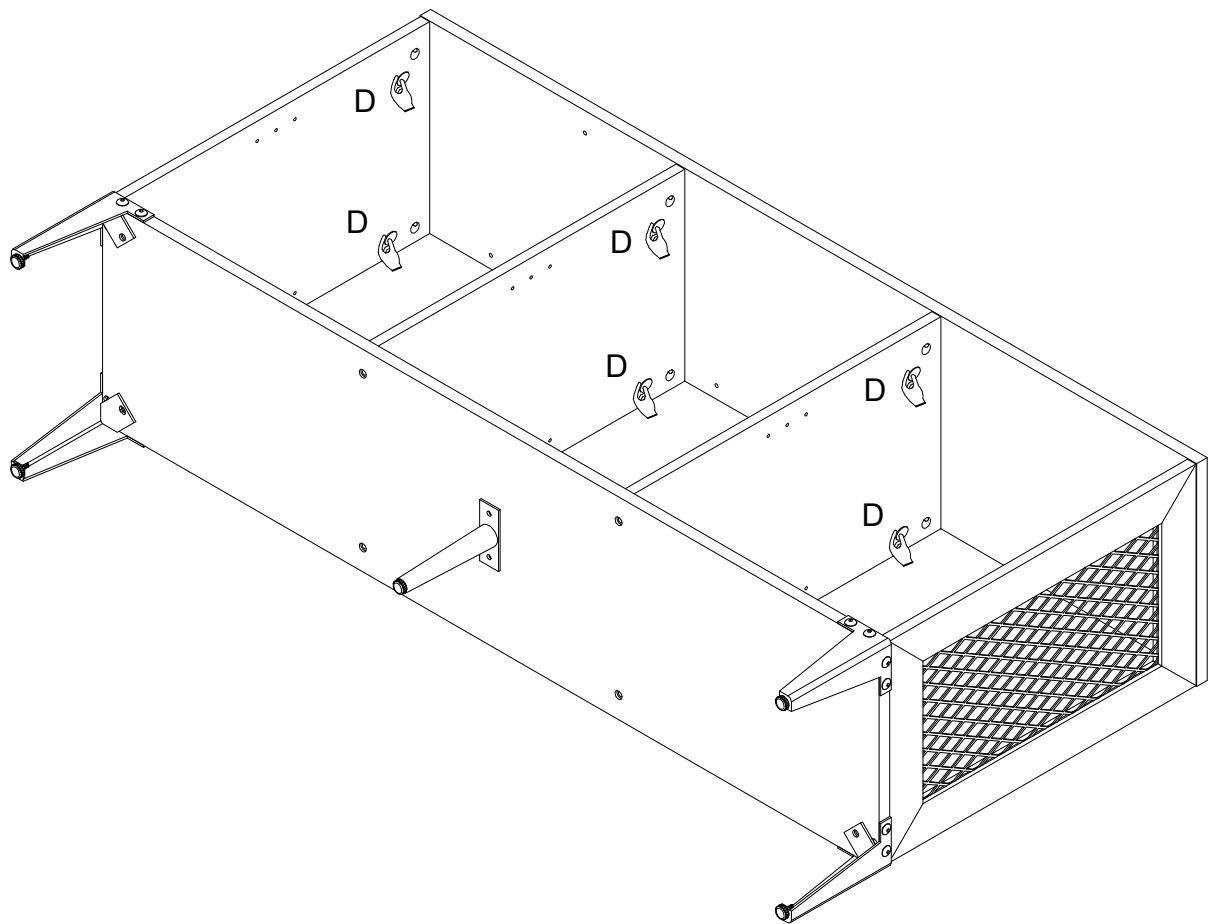
Using bolt (G) attach parts (9,10) to part (18) with hex key (F) as per diagram.

## Step 9



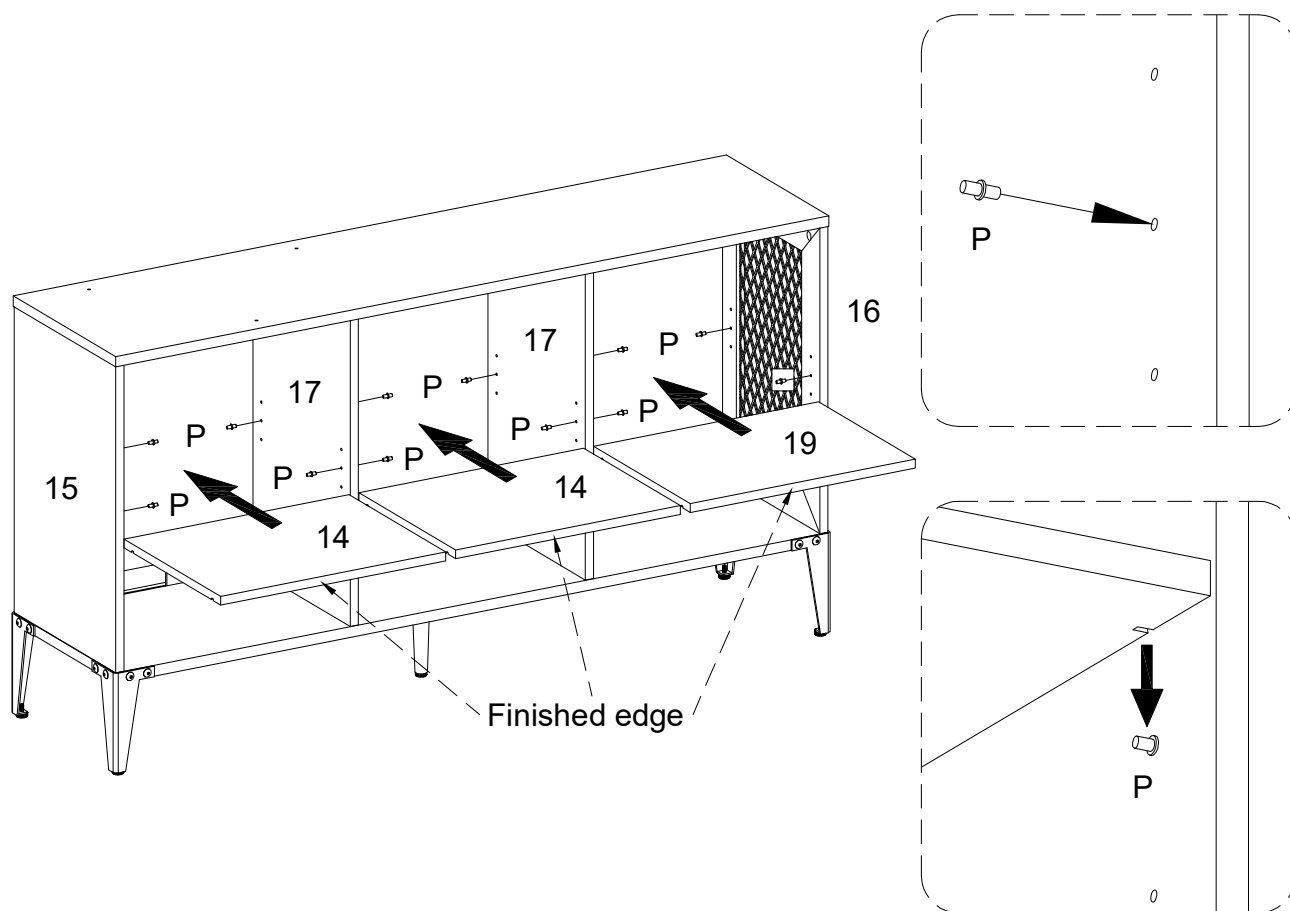
Using screw (R) secure plastic wedge (Q) with Philips head screwdriver as per diagram.

## Step 10



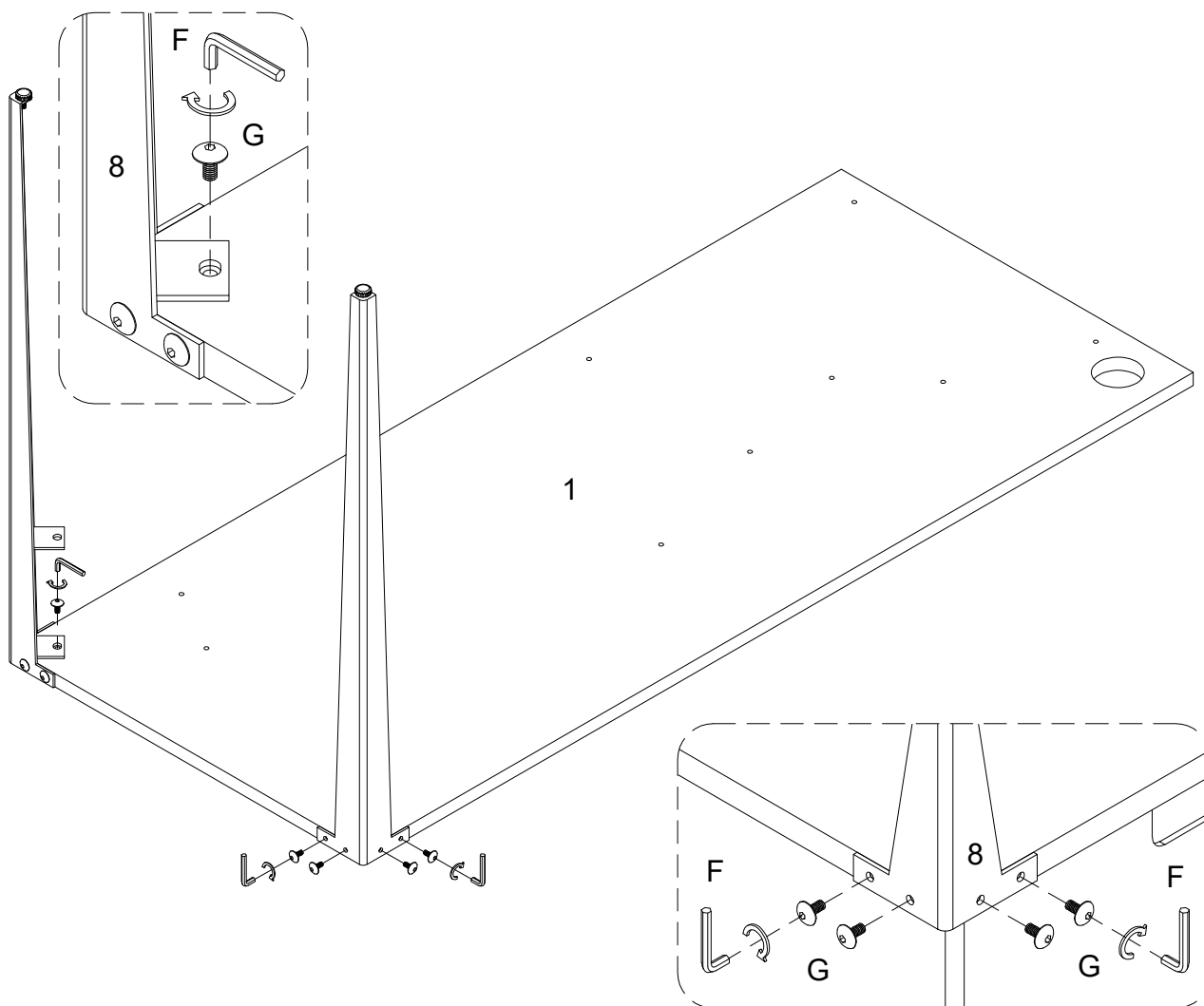
Place sticker (D) cover the holes as per diagram .

# Step 11



Insert shelf support pin (P) into parts (15,16,17) as per diagram. Make sure you place the four shelf support pins (P) in the same level. So the shelf is not titled .Put parts(14,19) into unit as per diagram Tilt and rest the adjustable shelf onto the shelf support pins .

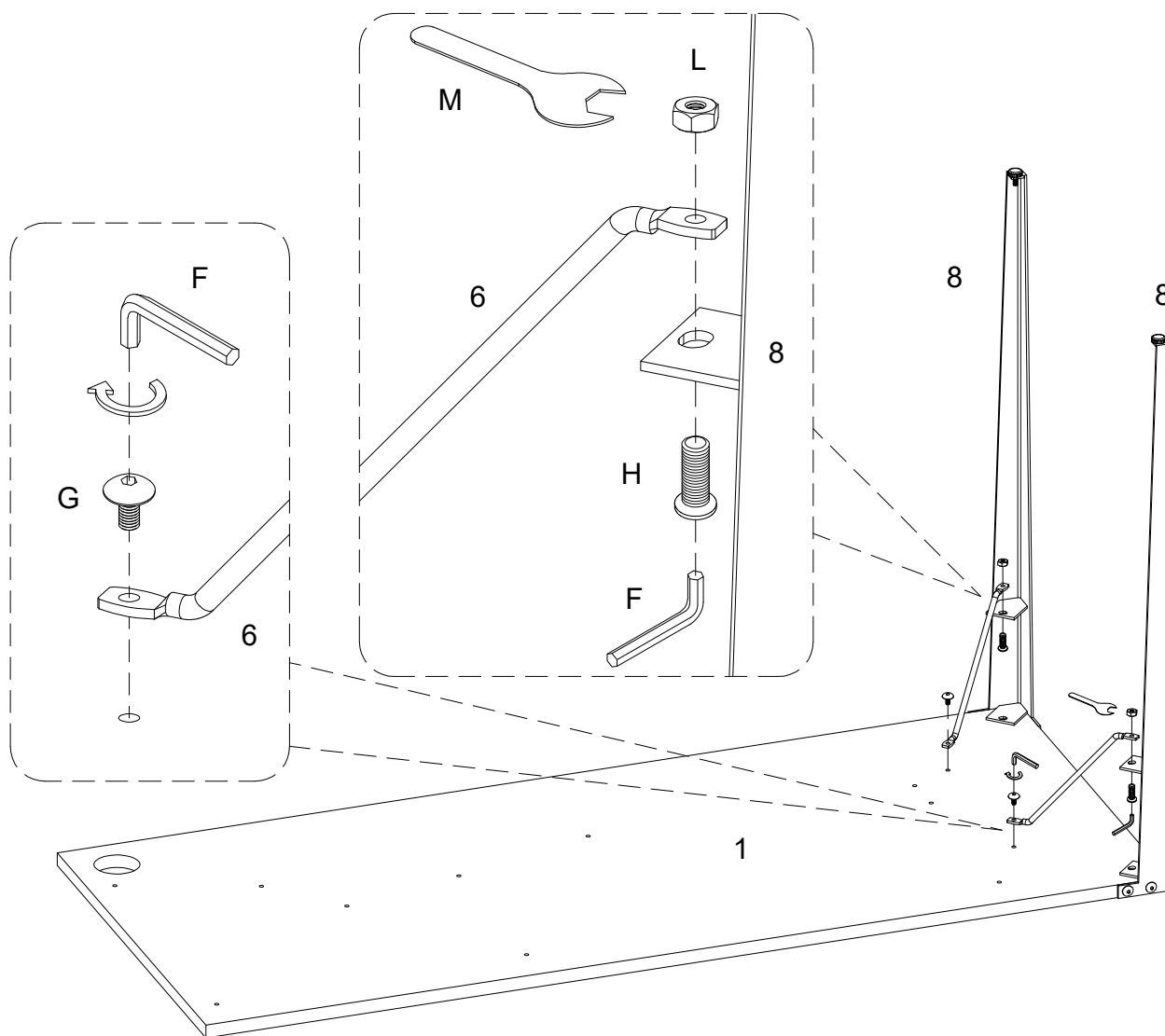
## Step 12



Using bolt (G) attach part (8) into part (1) with hex key (F) as per diagram.

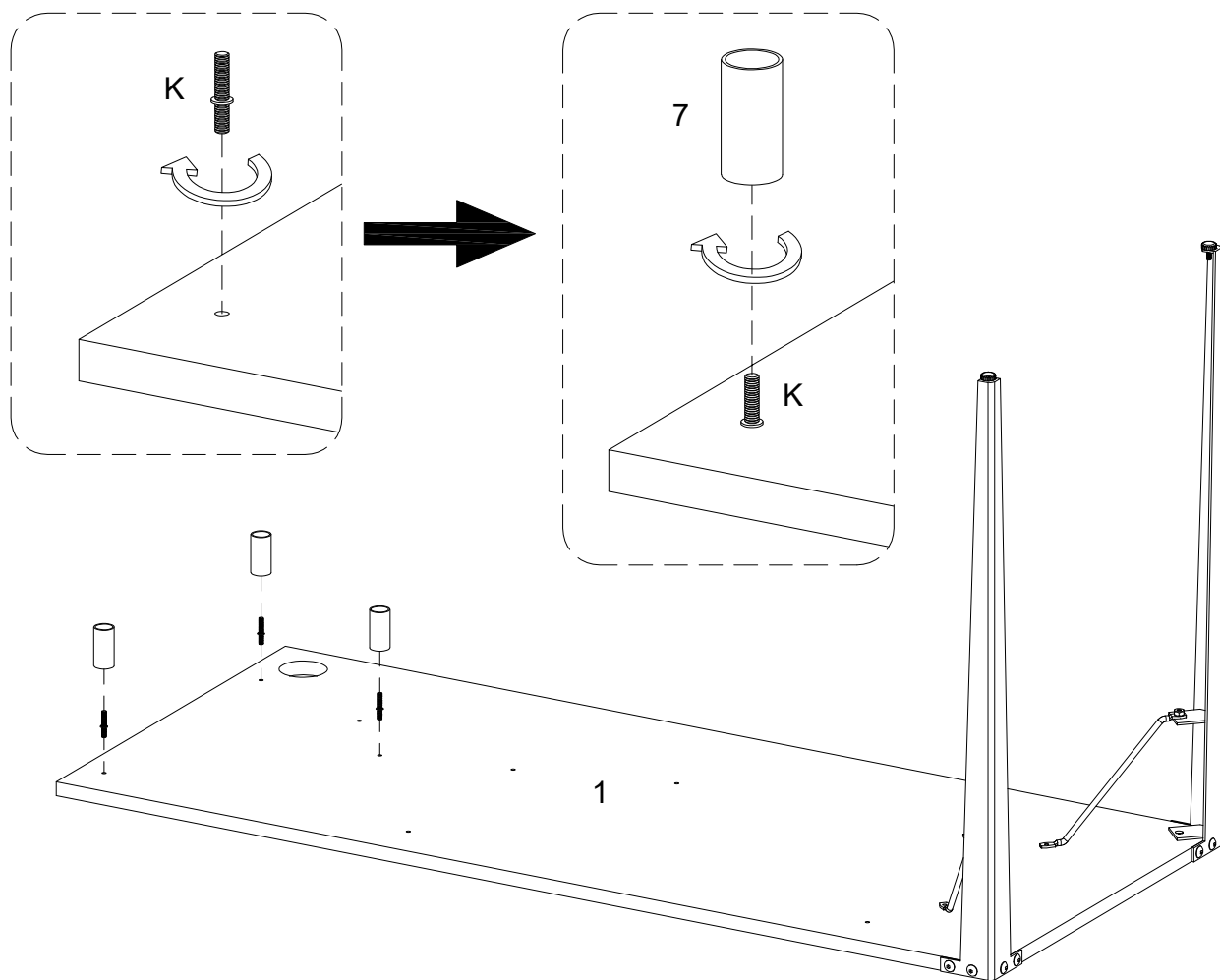


## Step 13



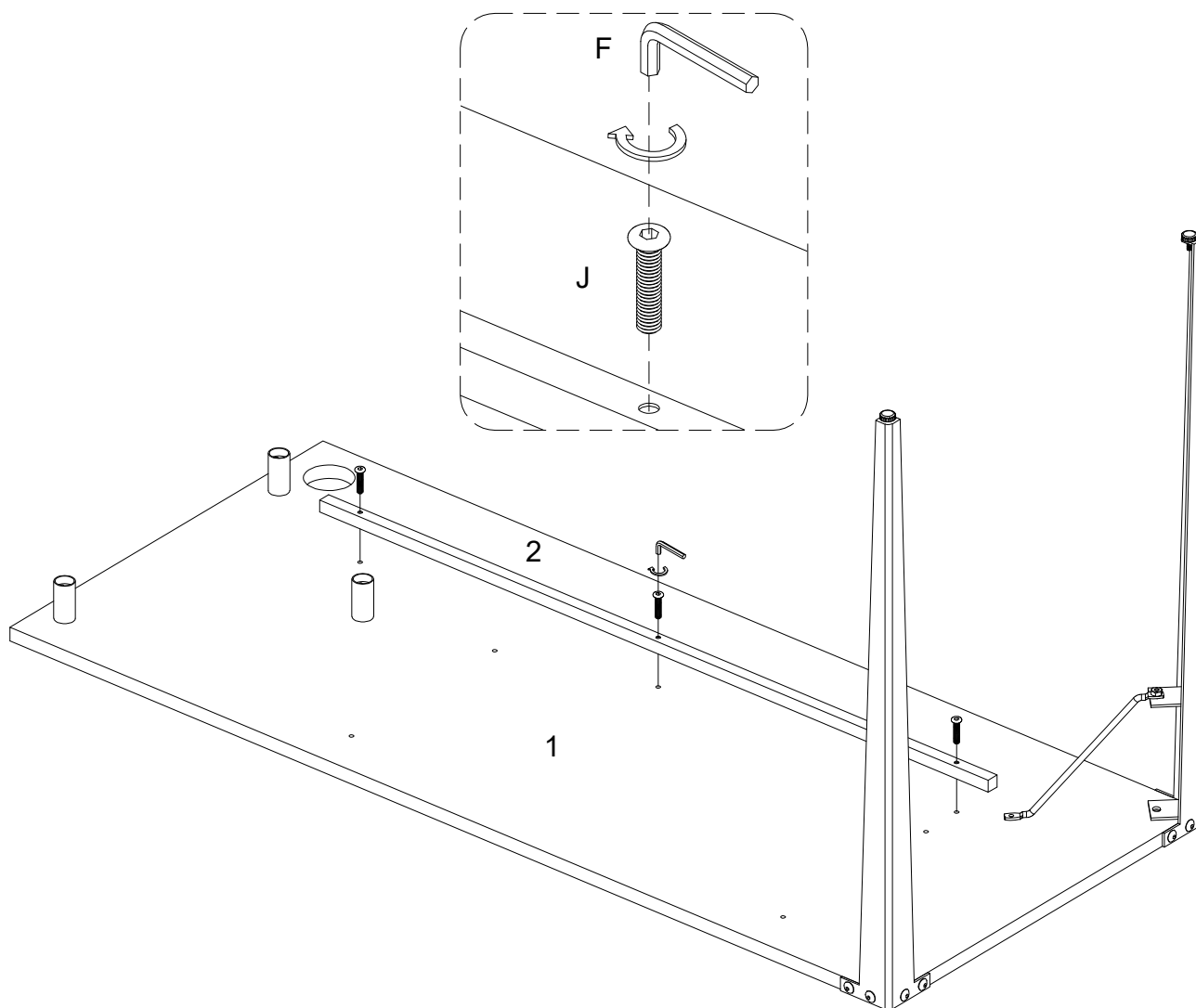
Using bolt (G) attach part (6) into part (1) with hex key (F) ,then using bolt (H) and Nut (L) attach part (8) into part (6) with wrench (M) and Hex Key (F) as per diagram.

## Step 14



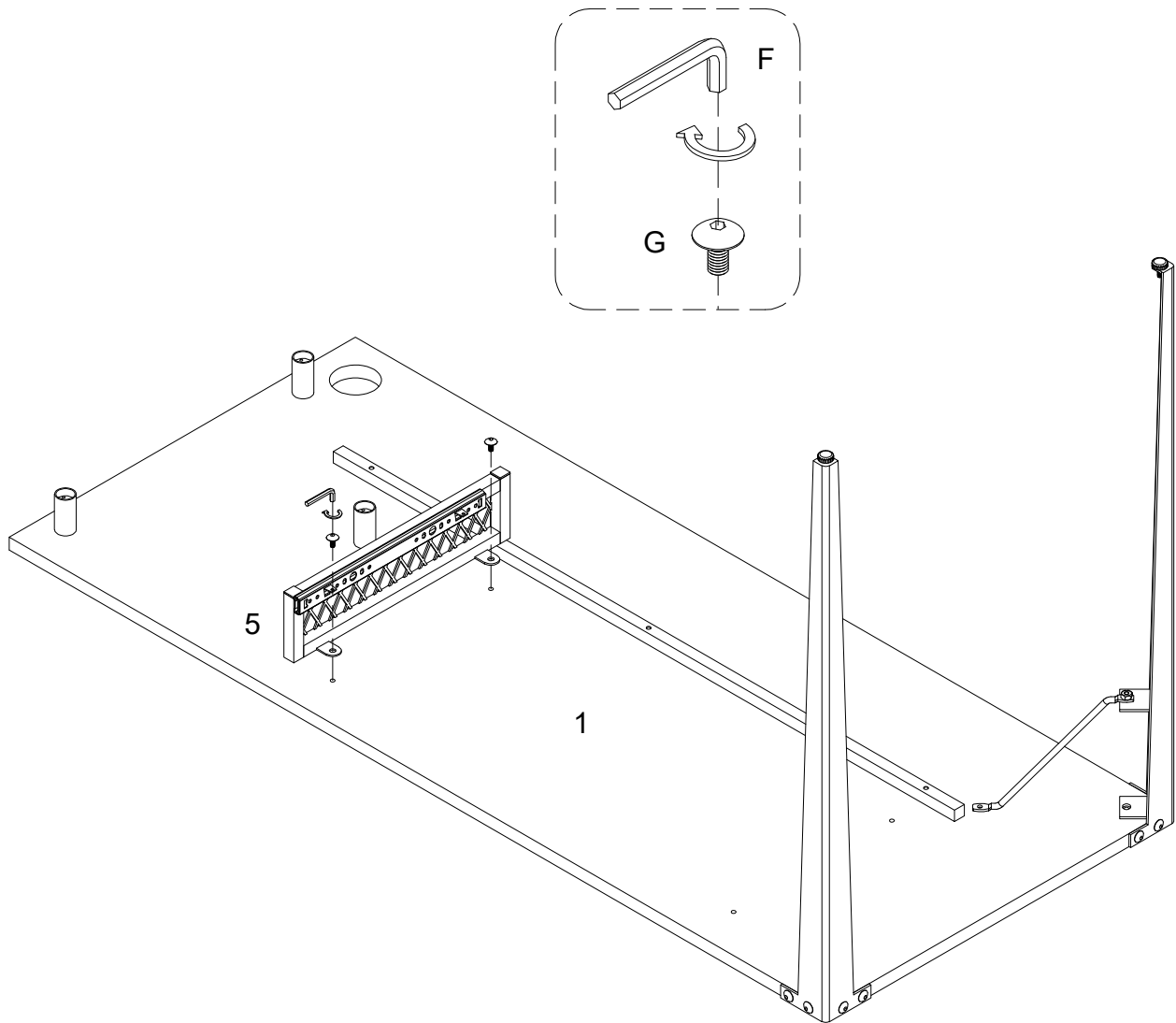
Insert bolt (K) into part (1), then secure part (7) as per diagram.

## Step 15



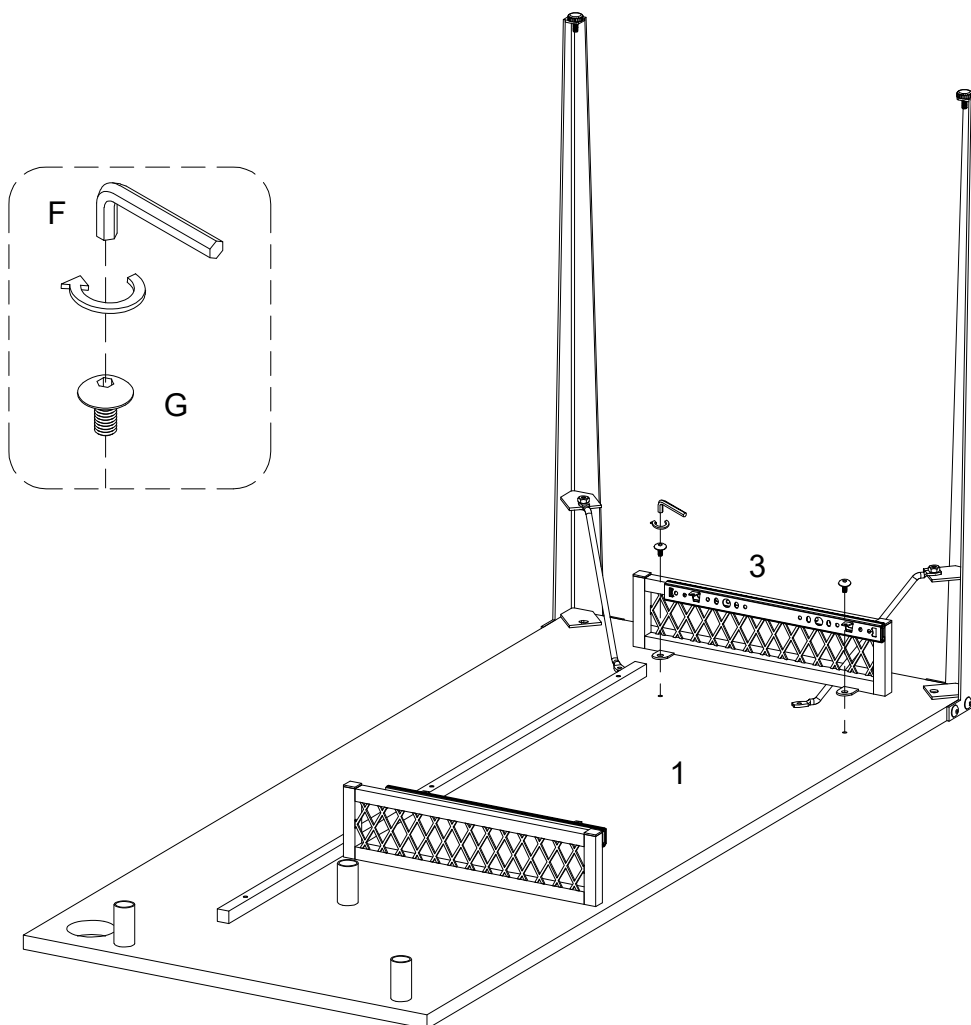
Using bolt (J) attach part (2) to part (1) with hex key (F) as per diagram.

## Step 16



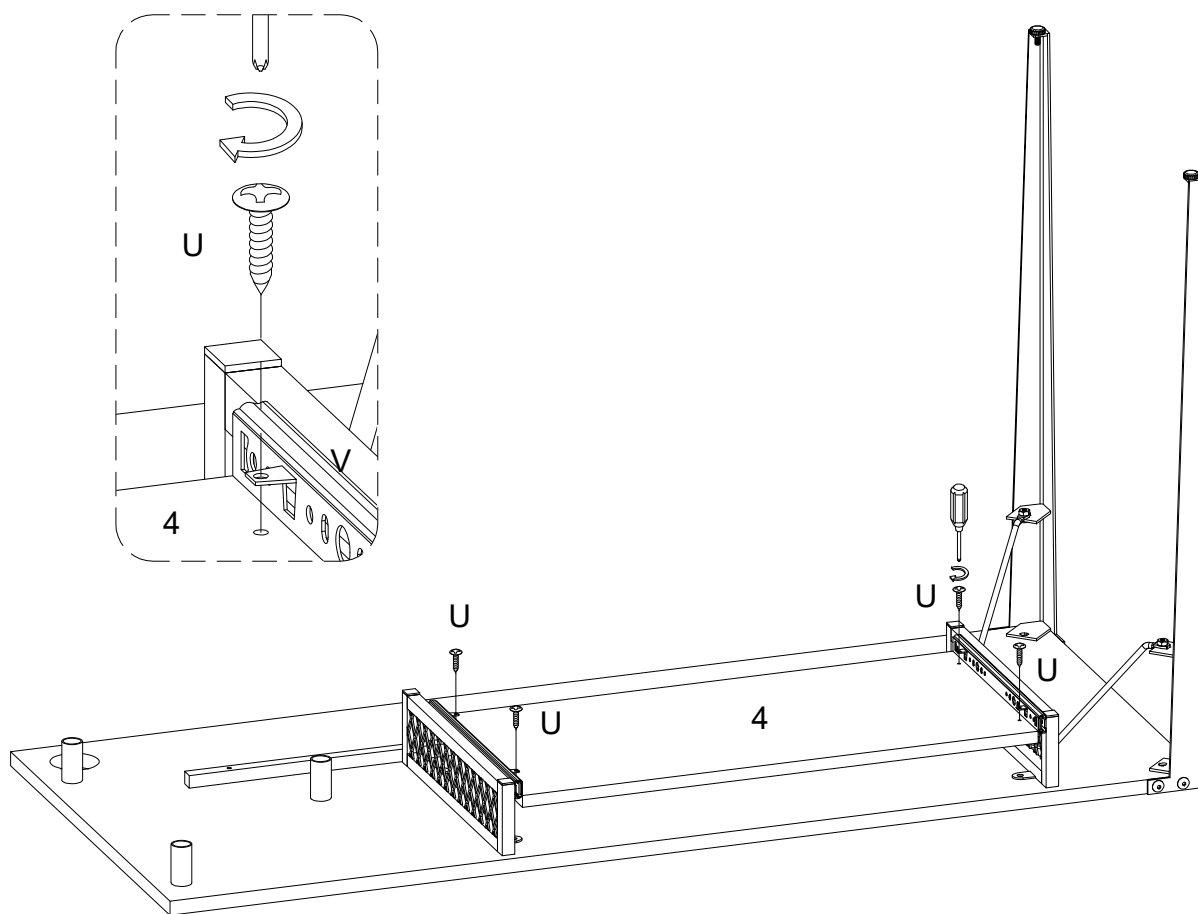
Using bolt (G) attach part (5) to part (1) with hex key (F) as per diagram.

# Step 17



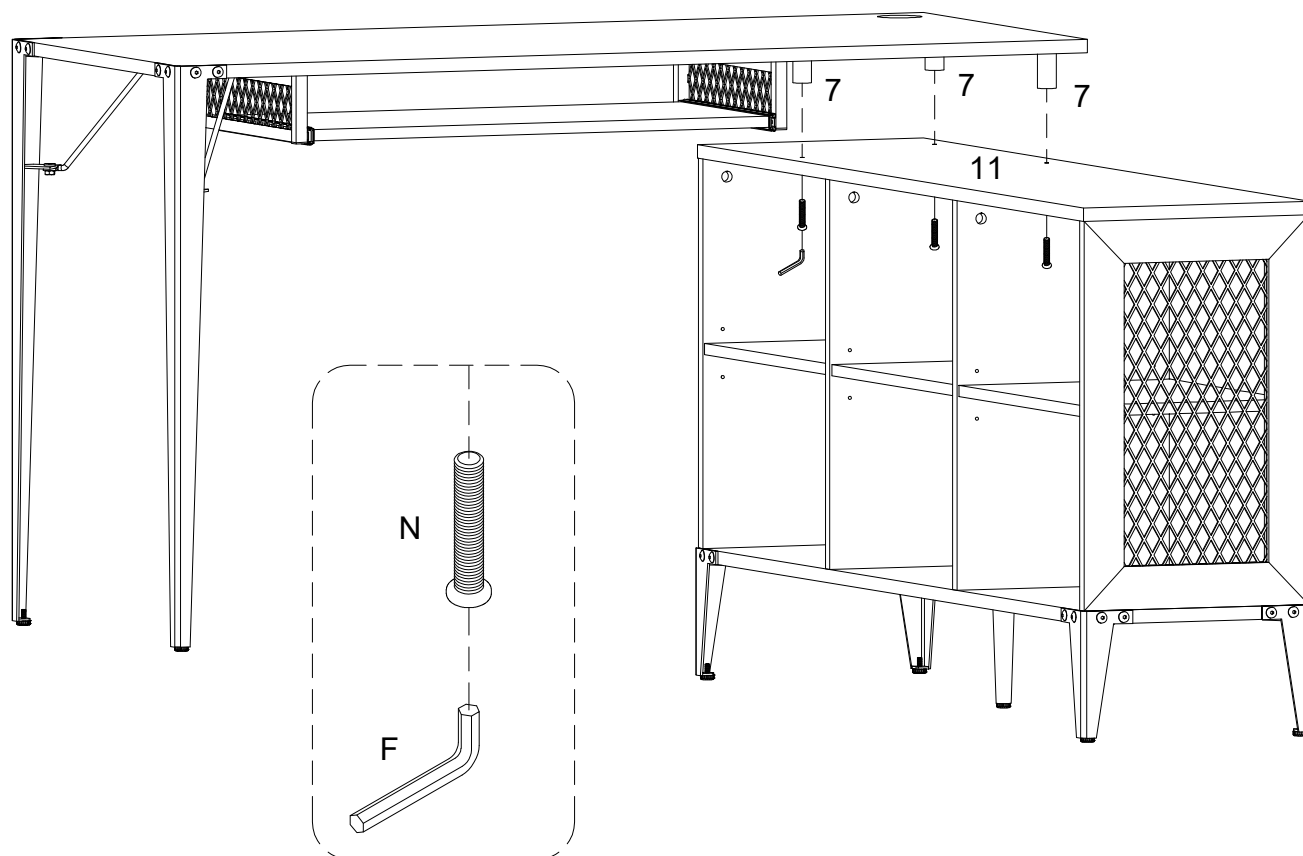
Using bolt (G) attach part (3) to part (1) with hex key (F) as per diagram.

## Step 18



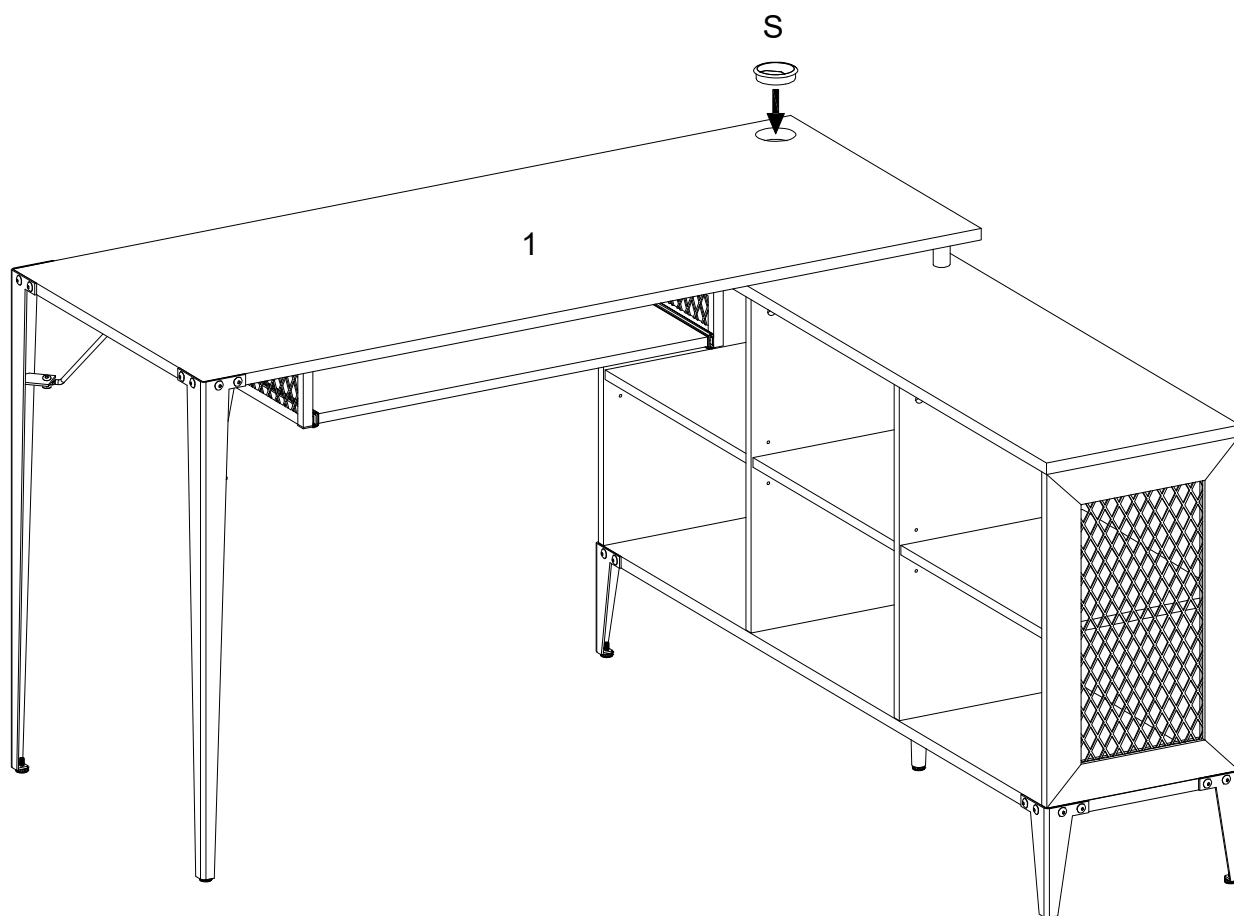
Using screw (U) attach slider drawer bracket (V) into part (4) with Philips head screwdriver as per diagram.

## Step 19



Using bolt (N) attach part (11) into part (7) with hex key (F) as per diagram.

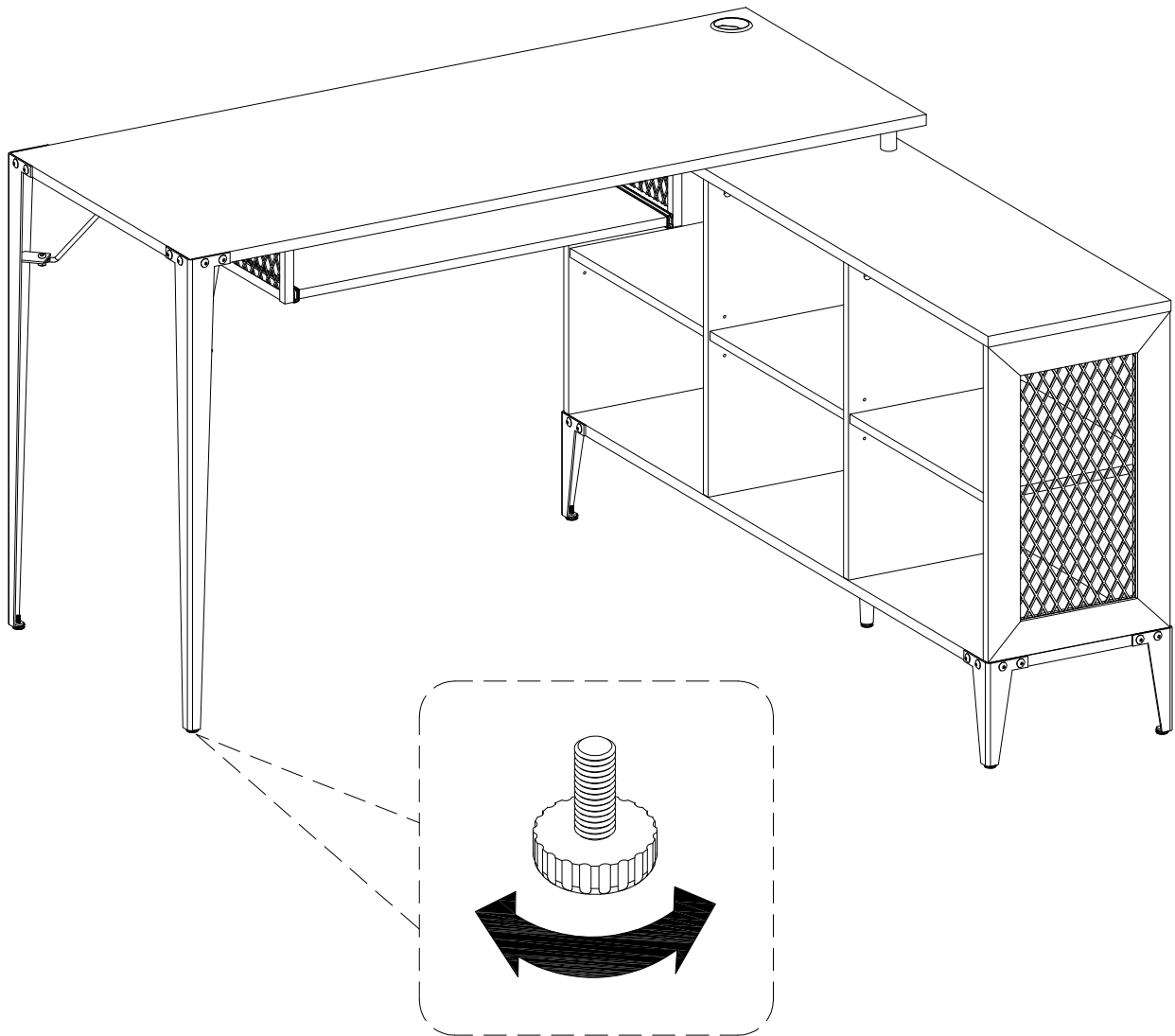
## Step 20



Put hole cover (S) as per diagram.

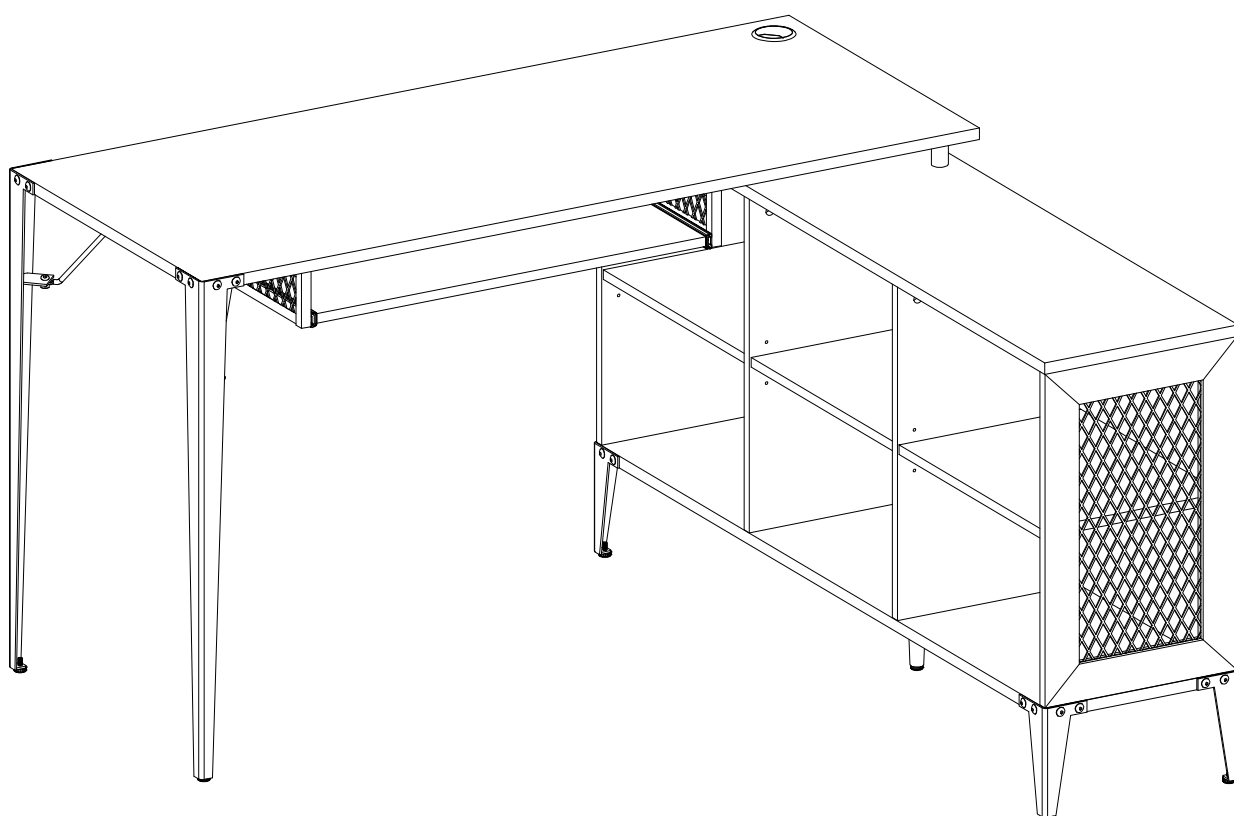


## Step 21



Position the assembled unit at the desired location ,if necessary adjust the floor leveler at the bottom of the support leg to level the unit .

## Step 22



Final Assembly