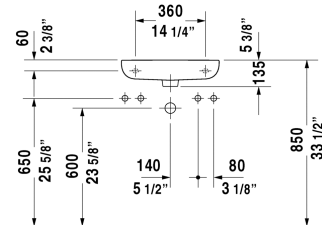
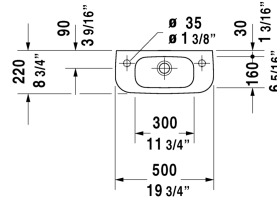


D-Code Handrinse basin # 07065000082 / 07065000092

| < 19 5/8" Inch > |



Handrinse basin	Dimension	Weight	Order number
with overflow, with faucet deck, underside fully glazed, hardware included, wall-mounted, cUPC® listed*, 19 5/8" Inch			
Colors			
00 White			
Variant			
● faucet hole on right side	19 5/8" x 8 5/8" Inch		07065000082
● faucet hole on left side	19 5/8" x 8 5/8" Inch		07065000092
Infobox			
* Complies with following standards: ASME A112.19.2/CSA B45.1, Mandatory in combination with a bottle trap			

All drawings contain the necessary measurements which are subject to standard tolerances. They are stated in inch & mm and are non-binding. Exact measurements, in particular for customized installation scenarios, can only be taken from the finished ceramic piece.