

300mm\*120mm

品名：cro dial 23款低压RGB插地灯（遥控）

料号：B04-23DSRBW-R-A

制作时间：2024.3.4(直接拿B04-23DSRBW-H-B 改品牌的)

修改时间：

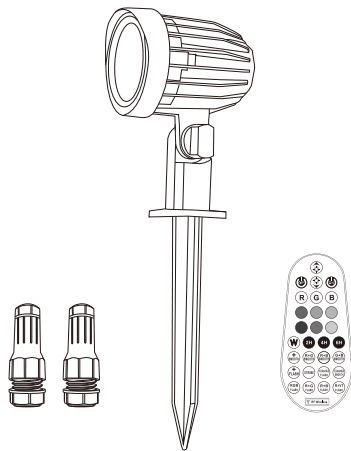
版本号：2024-A

\*此页面不印刷



# USER MANUAL

## Outdoor Spotlights



B04-23DSRBW-R-A

EN

Thank you for purchasing our products. Please read the terms and instructions carefully before using.

Any problem with the product, please contact us immediately. Our after-sales support team will contact you in the first time and solve every problem about the product.

### Precautions before Installation

1. The luminaire should be positioned at suggested installation height, please do not prolonged stare into the luminaire for more than 3 seconds within 2 meters.
2. The light source is not replaceable, when it reaches the end of its life, the whole luminaire needs to be replaced.
3. Please check the product carefully if there is any damage before installation.
4. Please prepare the output DC/AC 12V-24V (15W/7W), switching power supply before installation.
5. Please prepare an IP65 or above wiring device before installation to connect the switching power supply output cable with the lamp body input power cable.
6. It is forbidden to decompose or modify this lamp during the warranty period.
7. In order to ensure that the lamp can work properly, please use the voltage indicated on the package to supply power.

1

### Warning

This is a low-voltage power product. It cannot be directly connected to live use high-voltage power!!!!

### Parameter

Model	Wattage	Input voltage	Beam Angle	Dimming
DSTA15	15W	12-24V DC/AC	30°	YES

Color temperature: RGBW

IP rating: IP66

Ta: -25℃~40℃

### Functions

### Warning

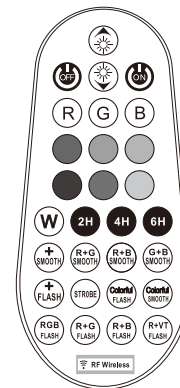
1. The spotlight has a built-in RF receiver. The remote control could control the product within 12 meters .
2. Please replace the remote control battery if the remote control is not sensitive or the control distance becomes shorter(may be the battery exhausted).

2

### Functions

40 modes + timing + dimmable

### Remote Control



- Power off
- Power on
- Brightness Up: 6 levels of brightness (25%-40%-55%-70%-85%-100%)
- Brightness Down: 6 levels of brightness (100%-85%-70%-55%-40%-25%)
- Gradient: In any single-color light mode, press this button, it will change current color to gradient light. Press to adjust gradual change speed
- Red/Green Gradient: Gradient Mode (R+G). Press to adjust gradual change speed
- Red/Blue Gradient: Gradient Mode (R+B). Press to adjust gradual change speed
- Green/Blue Gradient: Gradient Mode (G+B). Press to adjust gradual change speed
- Colorful Strobe: Strobe mode (colorful). Press to adjust strobe speed
- Colorful Gradient: Strobe mode (colorful). Press to adjust gradual change speed
- Colorful Jump: Jump mode (colorful). Press to adjust the jump speed
- Stroboscopic: In any single-color lighting mode, press this button to change the current color to strobe light. Press to adjust strobe speed

3

- RGB** FLASH RGB Jump: Jump mode (R+G+B). Press to adjust jump speed
- R+G** FLASH Red/Green Jump: Jump mode (R+G). Press to adjust jump speed
- R+B** FLASH Red/Blue Jump: Jump mode (R+B). Press to adjust jump speed
- R+VT** FLASH Red/Purple Jump: Jump mode (R+VT). Press to adjust jump speed

**2H** Timing Function: when the light works normally, press this button, it will work for 2 hours in the current mode then automatically turn off. (the light flashes twice in the working mode, indicating timer is started)

**4H** Timing Function: when the light works normally, press this button, it will work for 4 hours in the current mode then automatically turn off. (the light flashes twice in the working mode, indicating timer is started)

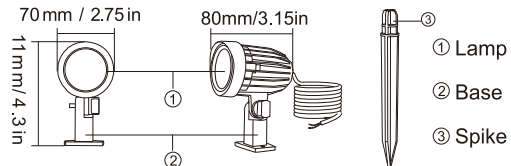
**6H** Timing Function: when the light works normally, press this button, it will work for 6 hours in the current mode then automatically turn off. (the light flashes twice in the working mode, indicating timer is started)

Monochrome: (R) red (G) green (B) blue (W) white



Memory Function: Lighting color remains as the previous setting when turned on again.

## Product Structure and Size



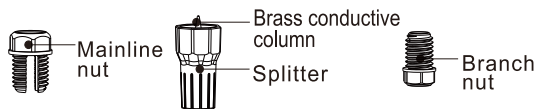
## Installation Method



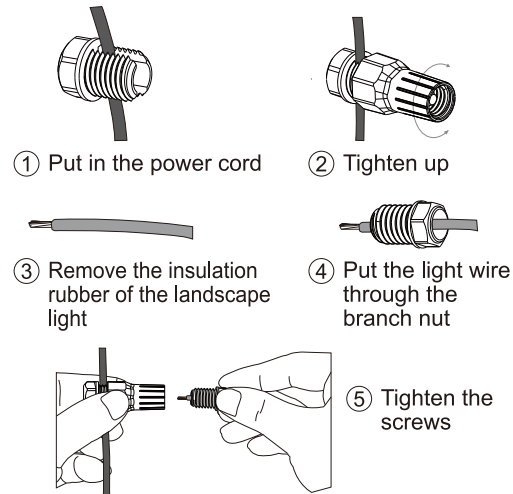
**Use the spike:** Fix the lamp bracket and the spike with screw, then insert on lawn or unhardened ground.

**Use the base:** After fix the lamp bracket to the base with screws, the lamp can be fixed on the hardened floor or wall with screws.

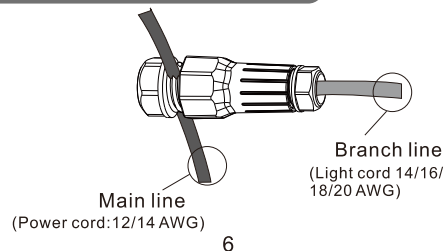
## Product parts



## Installation



## Correct installation diagram



## General Troubleshooting

If it is not installed improperly, please confirm whether it is due to the following reasons. If you cannot solve the problem after using the following methods, stop using it immediately and contact a professional or retailer for help.

1. If the lamp fails to work after power access disconnect the power supply and check the lamp power cable connection is good or not.
2. If the connection is correct, please check whether the supply voltage meets the rated voltage required by this lamp or other line faults.

## Warning

1. There is a battery inside, high temperature and violent impact are prohibited. Keep away from fire.
2. Do not stare at the LED light-emitting surface closely for a long time to prevent the hurt to the eyes.
3. Under no circumstances should the luminaire be covered by a thermal pad or similar material.



Company name: Shenzhen Oumeike Lighting Technology Co., Ltd.  
Address: No. 19-20, Anye Road, Yuanshan Street, Longgang District, Shenzhen, Guangdong, China ( +86 0755-28608199)

Contact: serviceyrt@gmail.com