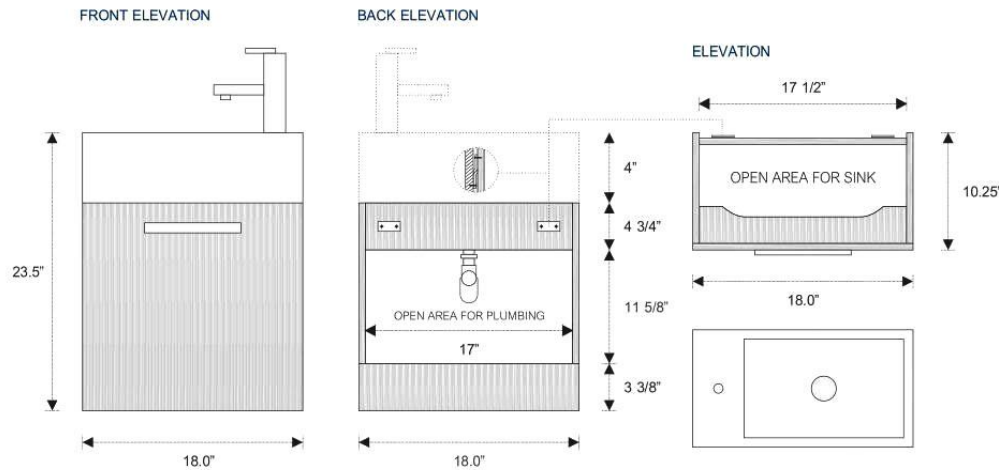


## 18" WALL MOUNT BATHROOM VANITY ..

### Discription:

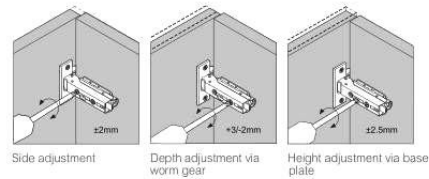
- European Soft Closing Hardware
- White color: 18mm Thick MDO Construction Console w/ One Door
- Other colors: 18mm Marine Veneer Wood construction Console w/ One Door
- Open back, w/ 3.5" clearance behind drawers for easy plumbing access
- Reinforced Acrylic Composite Sink w/ Rectangular, Chrome Overflow



### Adjustments

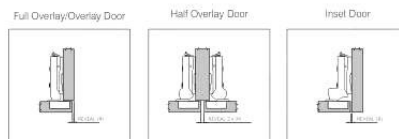
The options for height adjustment depend on the type of base plate. All adjustments can be made independent of one another.

For depth adjustment, select base plates have worm gear adjustment access through the hinge arm.



### Reveal

The reveal (R) is the distance required between two doors or between the door and side wall of the cabinet to allow sufficient space for opening the door. The required reveal width (R) depends on the thickness of the door. Most cabinet makers prefer a reveal (R) of between 3mm and 6mm.

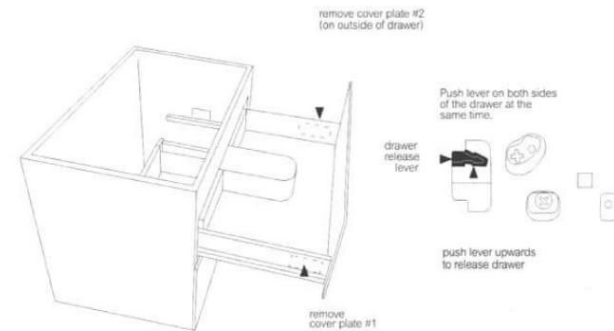


Dimensions:	width	depth	height
inches	18.0"	10.25"	23.5"
mm	460.00	260.00	600.00

## . Vanity cabinet | removing+adjustment drawers

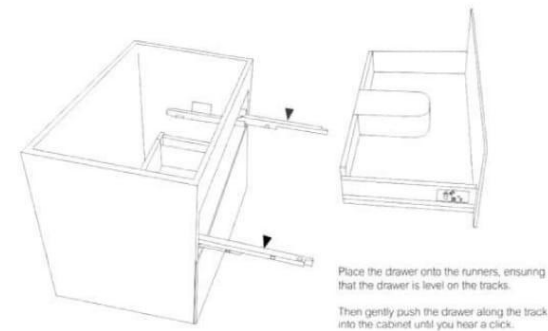
### To remove the drawer/s

- \* Extend the drawer
- \* Each drawer has a **plastic cover plate** on each side of the drawer (#1 and #2)
- \* **Remove both cover plates (#1 and #2)** to expose a small **drawer release lever** under each plate: *see detail*
- \* To release and remove the drawer, simultaneously **push the drawer release levers upwards** (both sides at same time) and slide/lift the drawer away from the tracks. Repeat for each drawer.



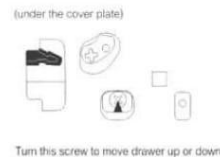
### To replace the drawer/s

- \* Fully extend the drawer runner on each side of the cabinet.
- \* Place the drawer onto the runners, ensuring that the drawer is **level** on the tracks, and continue to hold in place (otherwise the drawer will fall).
- \* Keeping the drawer level, gently **push the drawer along the runners into the cabinet until you hear a click**. This indicates that the drawer is properly locked into place on the track.
- \* Once the drawer is back in place, replace the cover plates on the sides of the drawer.

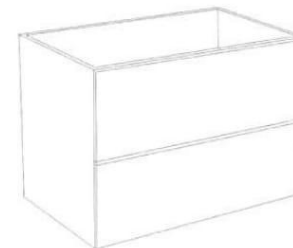


### To adjust the drawer/s

- \* To move the drawer up or down, turn the **bottom screw** located under the cover plate on each side of the drawer.



These instructions show a vanity cabinet which has two drawers. However, the instructions apply to all cabinets and all sizes of the Vanity line. The characteristics and drawer mechanisms are the **same** for all units.



Your best source for Bathroom Vanities