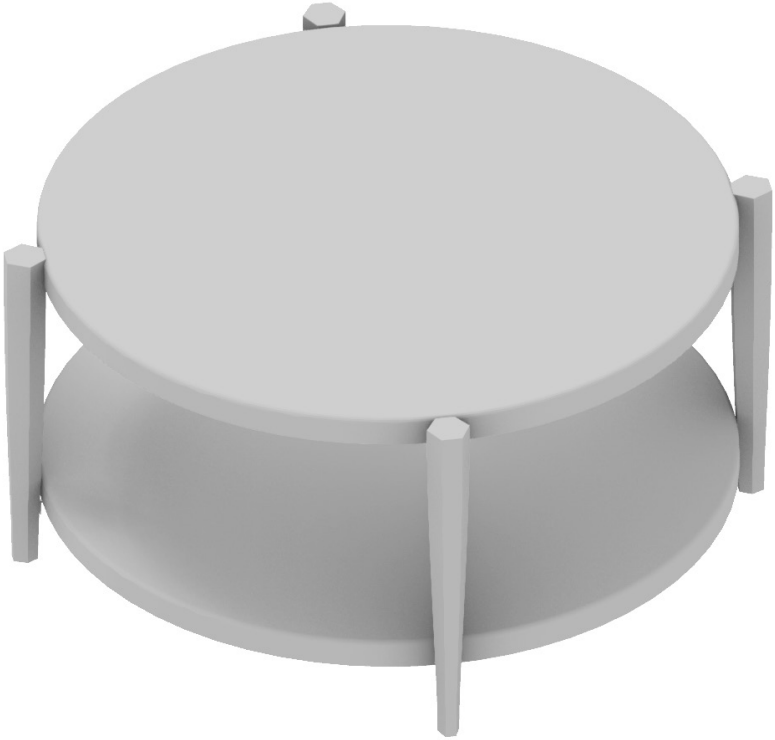


Owner Manual



15 : 00

estimated assembly



2 or more

people required

Ok, let's
get started!



- Put on mood music!
- To prevent damage to product, use the clean side of package carton or rug as working surface.
- In the event of missing or damaged parts, delivery problems etc., please reach out to our team. We will be happy to fix the problem!

care guide

- Clean regularly with a soft and dry cloth.
- To protect finish, avoid use of abrasive cleaners.
- Wipe up spills immediately. Please!



product parts



A
Table Top
x1



B
Shelf
x1



(C)
Table legs
x4

what's included



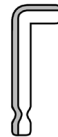
(D)- Plain Washer
x16



(E)- Lock Washer
x16



(F)- L Key Bolt
(8 x 25mm)
x16



(G)- Allen Key
(5mm)
x1

WS White sticker

GS Green sticker

YS Yellow sticker

OS Orange sticker

assembly instructions

Friendly Tip: Take a deep breath going in. This may be a tricky part, but nothing too overwhelming. Just follow these steps to the T and the outcome will be worth it!



- ⓘ While assembling the product, tighten the bolts up to 50%. Once all parts are in place, only then fully tighten the bolts.

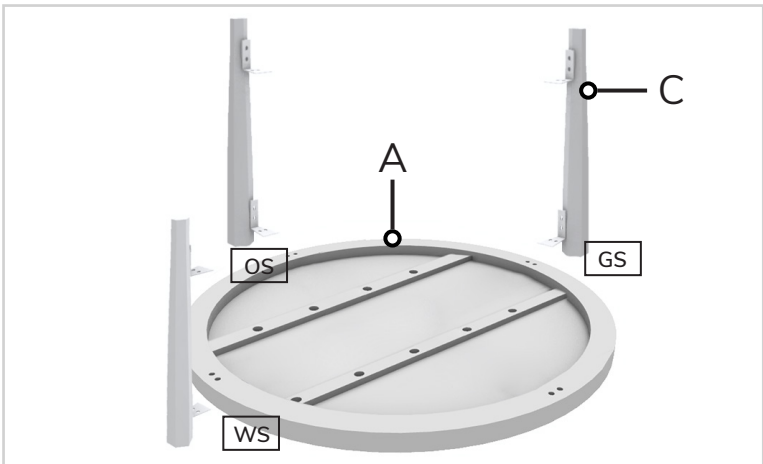
step 1:

Start by placing the table top (A) upside down on a flat surface.



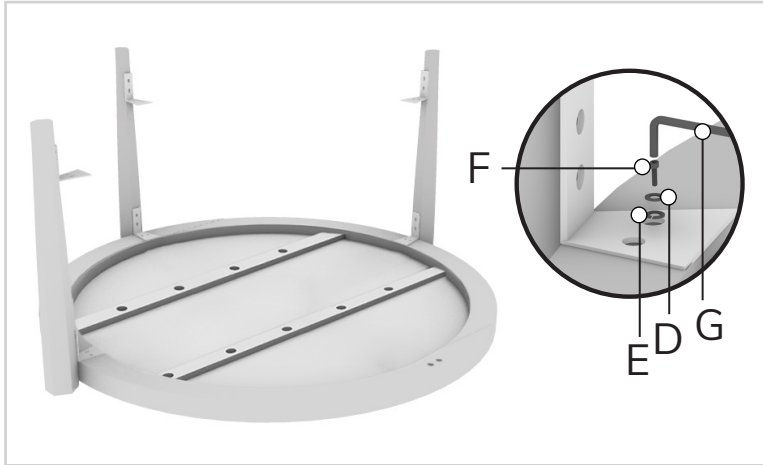
step 2:

Then, using the image below as a reference, align any 3 legs (C) with the slots on the tabletop. Ensure the stickers on the legs are similar to the stickers on the table top.



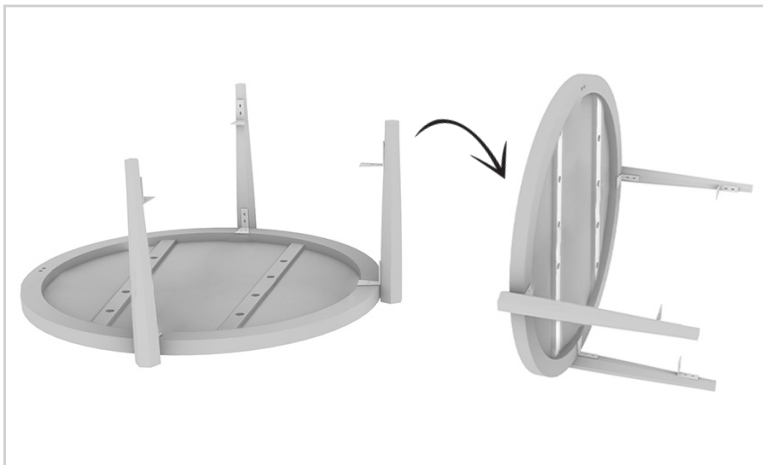
step 3:

Now, attach the 3 legs (C) with the tabletop (A) by inserting plain washer (D), lock washer (E), and bolts (F) in the given slots. Tighten the bolt using allen key (G).



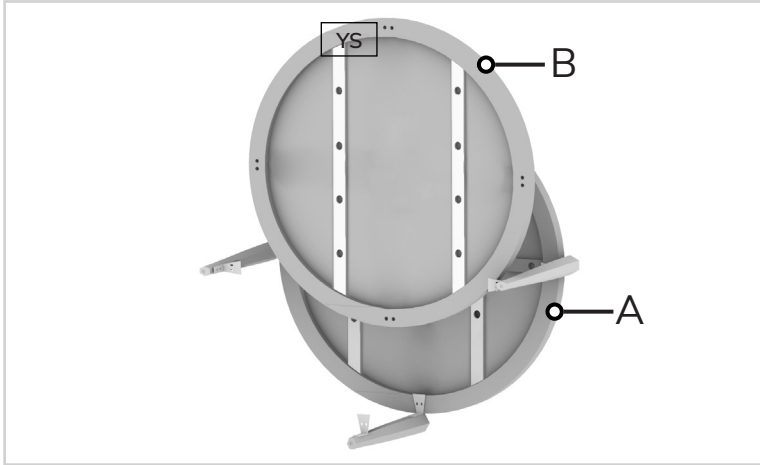
step 4:

Turn the table sideways as shown in the image below.



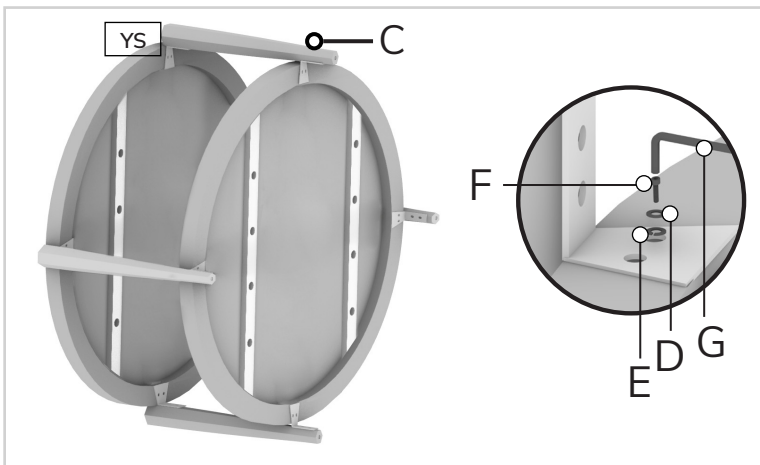
step 5:

Now, place the shelf (B) in between the legs, so that the slots on the legs align with the holes on the shelf. Ensure the stickers on the shelf are similar to the stickers on the legs.



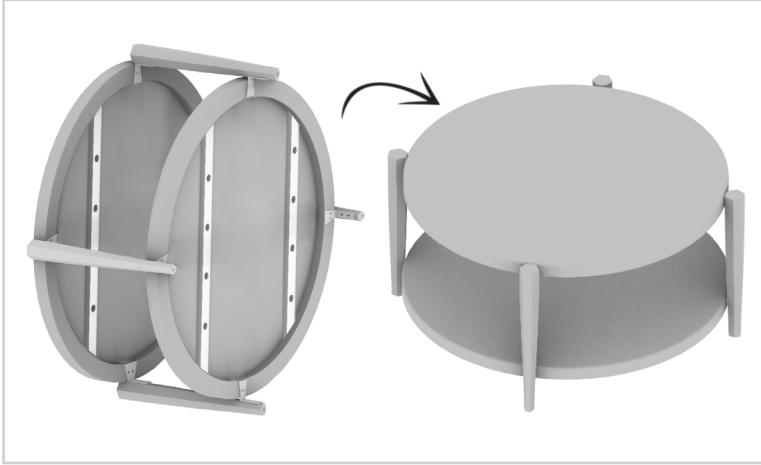
step 6:

When done, take the remaining leg (C) and align it on the remaining holes given on the table top & the shelf. Fix it in place by inserting plain washer (D), lock washer (E), and bolts (F) in the given slots. Tighten the bolt using allen key (G).



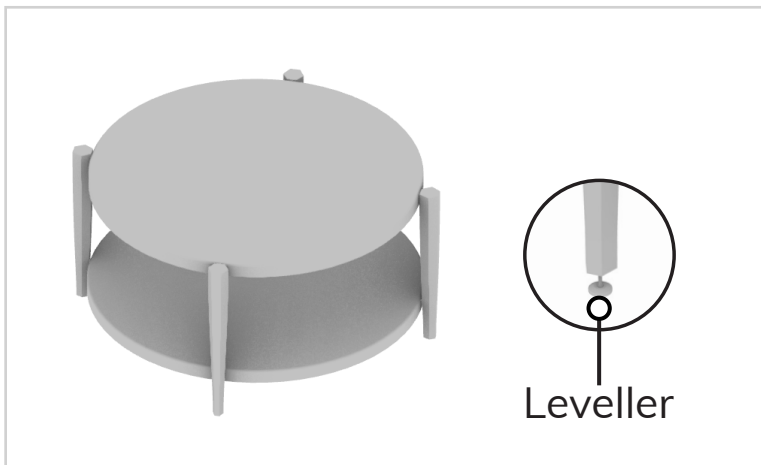
step 7:

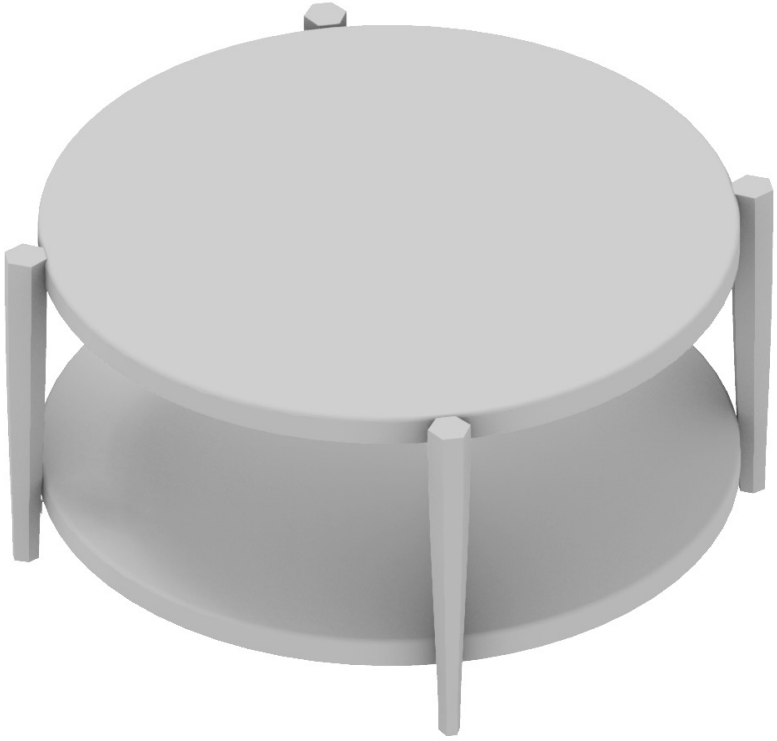
Turn it into upright position.



step 8:

If required, adjust the levellers according to the floor.





Voila! Your coffee table is now assembled and secure!