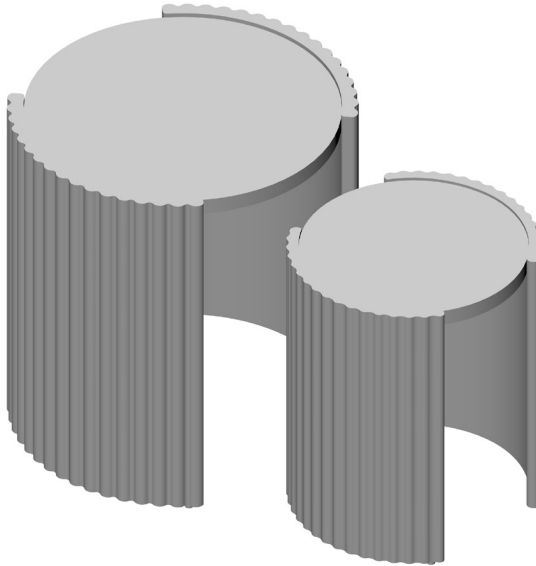


Owner Manual



15 : 00

estimated
assembly time



1 or more

people required

Ok, let's
get started!



- Put on mood music!
- To prevent damage to product, use the clean side of package carton or rug as working surface.
- In the event of missing or damaged parts, delivery problems etc., please reach out to our team.
We will be happy to fix the problem!

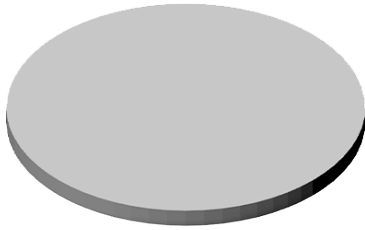
care guide

- Clean regularly with a soft and dry cloth.
- To protect finish, avoid use of abrasive cleaners.
- Wipe up spills immediately. Please!

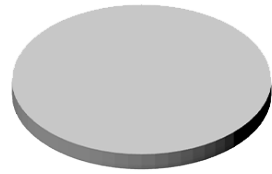
ⓘ **While assembling the product, tighten the bolts up to 50%. Once all parts are in place, only then fully tighten the bolts.**



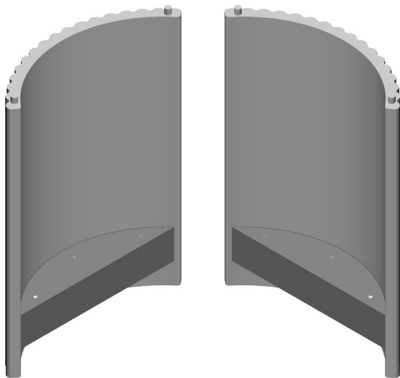
product parts



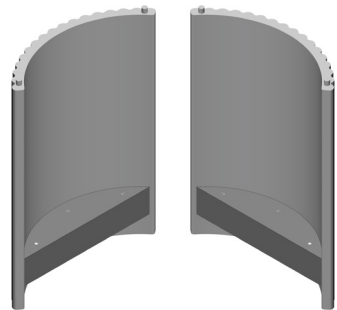
A
Tabletop
x1



A1
Tabletop
x1



B
Table Legs
x2



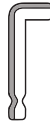
B1
Table Legs
x2

NOTE: The assembly instructions are the same for both tables.

what's included



(C) - Bolt
(6 x 35mm)
x12



(D) - Allen Key
x1



(E) - Flat Washer
(6 x 18mm)
x12



(F) - Lock Washer
(8.5 mm)
x12

assembly instructions

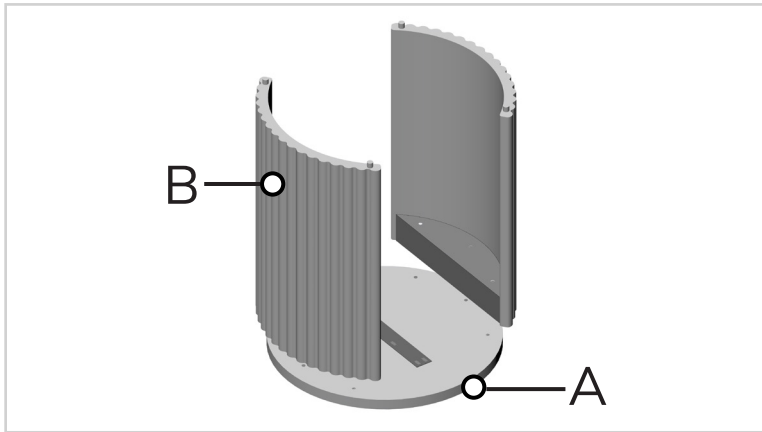
Friendly Tip: Take a deep breath going in. This may be a tricky part, but nothing too overwhelming. Just follow these steps to the T and the outcome will be worth it!



- ⓘ While assembling the product, tighten the bolts up to 50%. Once all parts are in place, only then fully tighten the bolts.

step 1:

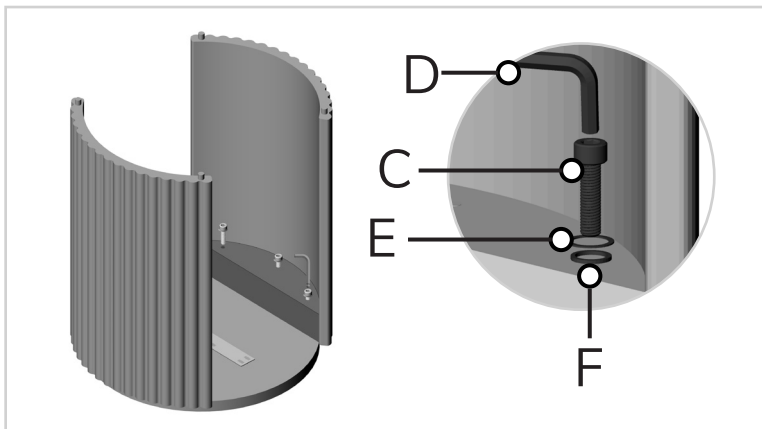
Start by placing the tabletop (A) upside down. Align the table legs (B) with the slots on the tabletop. Take this image as reference.



NOTE: The assembly instructions are the same for both tables.

step 2:

Now, secure the table legs in place by using plain washer (E), lock washer (F), and bolts (C) in the given slots. Tighten the bolt using allen key (D).



Voila! Your table is now assembled and secure!