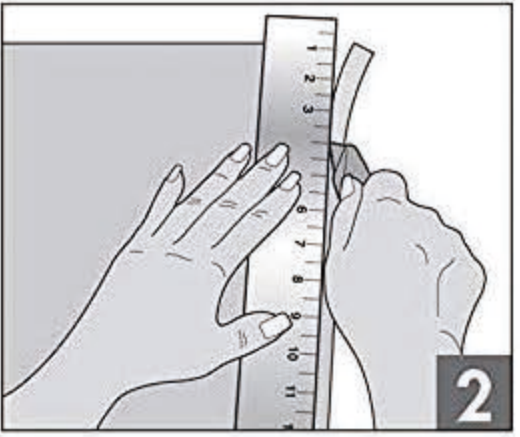


Clean Glass

Clean your glass and make sure there is no any oil, glue or dusts



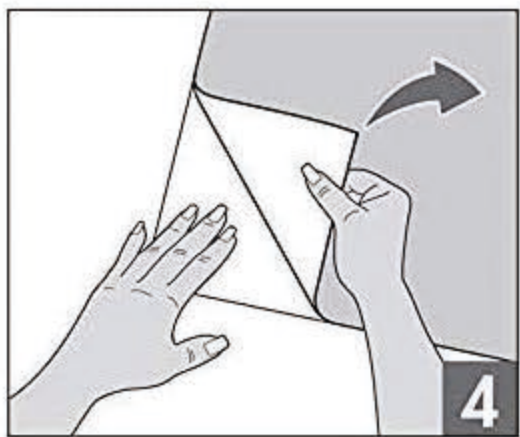
Measure / Trim Film

Measure the size of your glass. Cut the film to your needed size. (around 0.5 inch larger than the glass size)



Wet Glass

Spray waters on the glass



Remove Backing

Remove the backing of window film (Don't forget this important step) .



Position Film

Put the glass film (smooth side) on glass, adjust the position to fit the glass.



Wet Film and Squeegee

Squeegee out the water and also smooth the film. Trim the glass film edges with knife. Measure the size of your glass