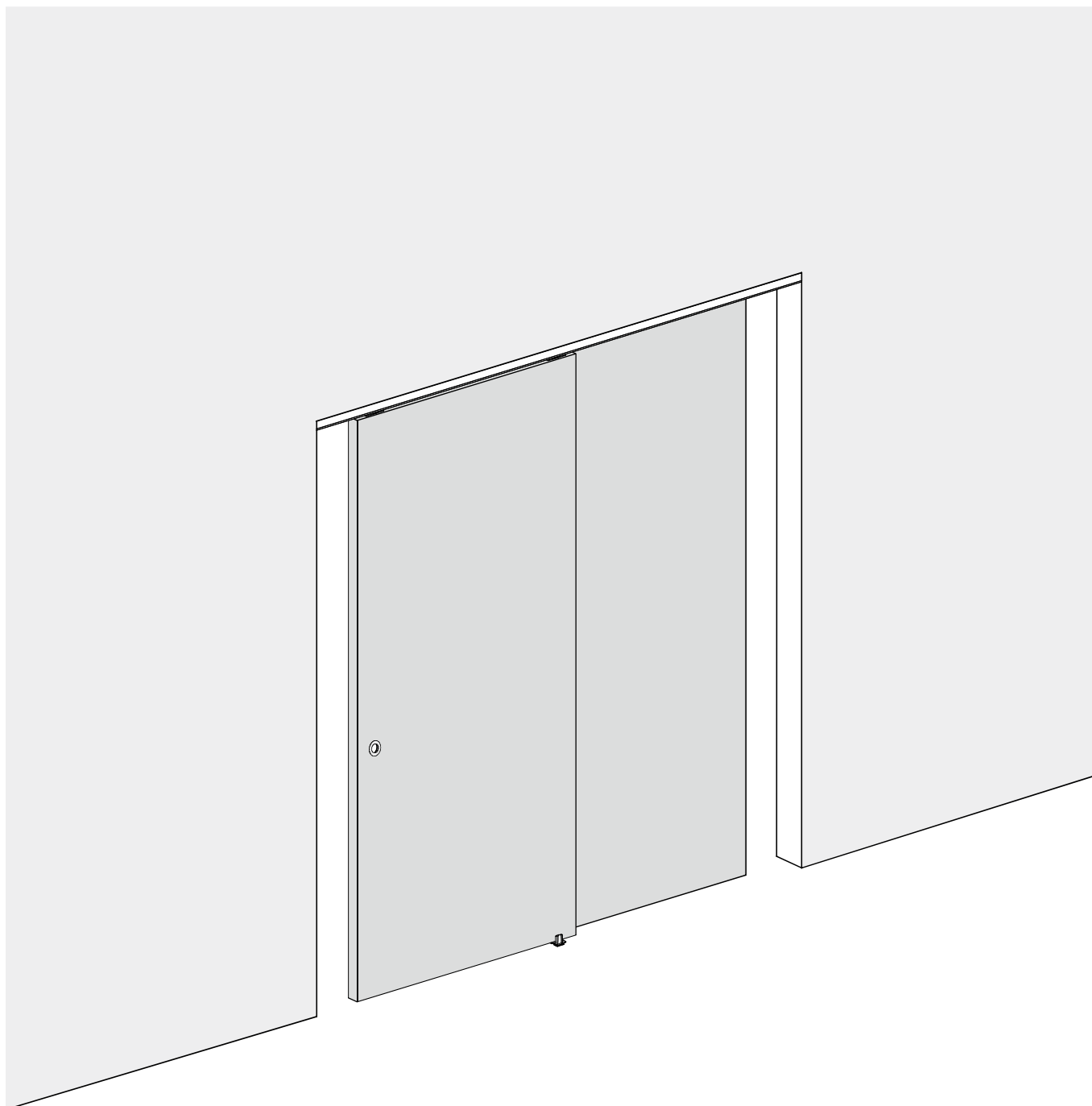


# Installation manual

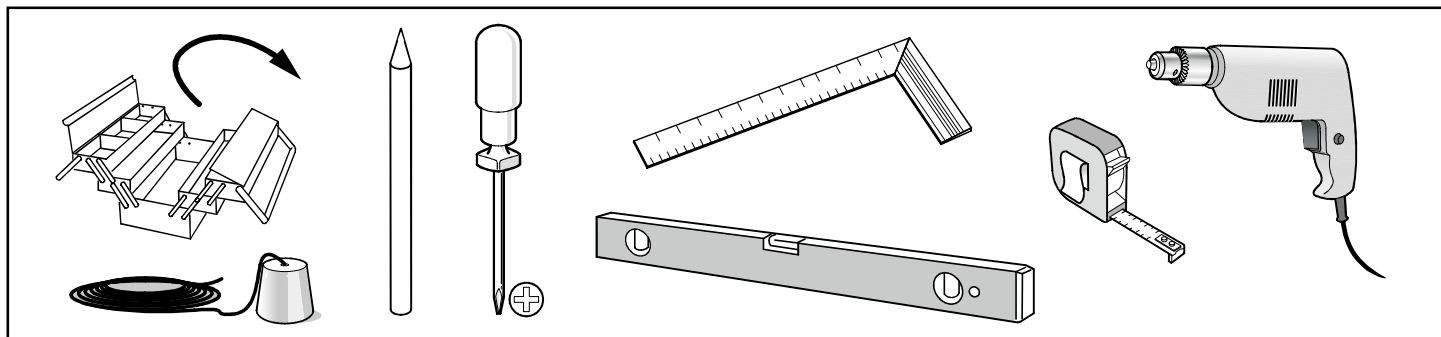
---

TSQAL13-8FT

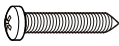
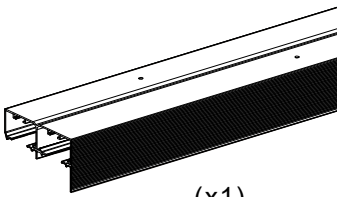
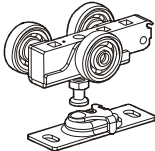
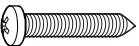
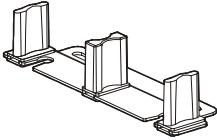
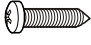
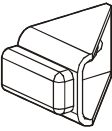
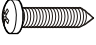





# Pre-installation

## TOOLS REQUIRED

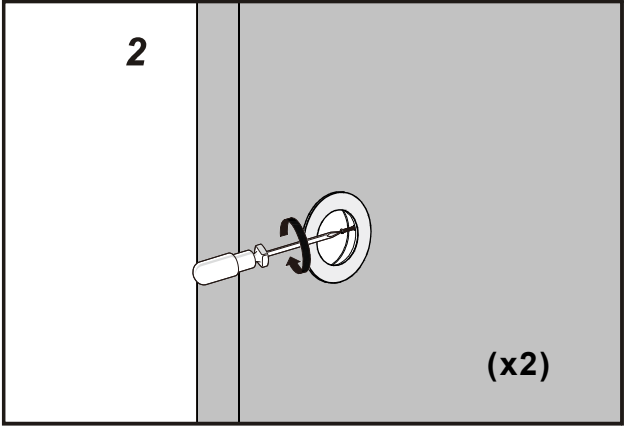
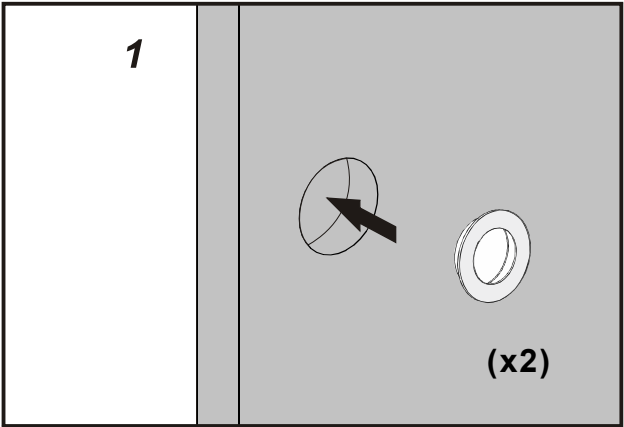
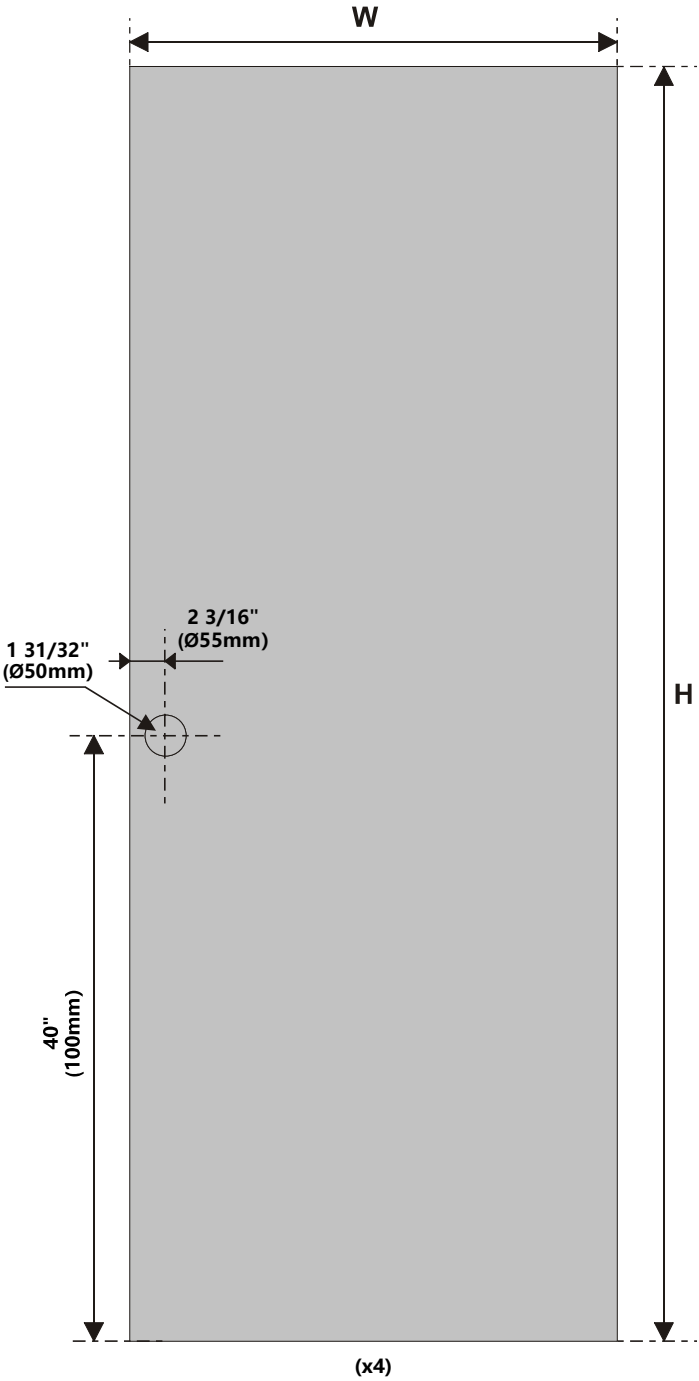


## HARDWARE INCLUDED

 ST4.2x32 11/64"x1 17/64" (x15)		 (x1)		 (x4)	 ST5.5x32 7/32"x1/8" (x8)
 (x1)	 ST4.2x19 11/64"x3/4" (x2)	 (x1)	 ST4.2x19 11/64"x3/4" (x3)	 (x2)	 ST2.9x16 7/64"x5/8" (x4)
 (x1)					

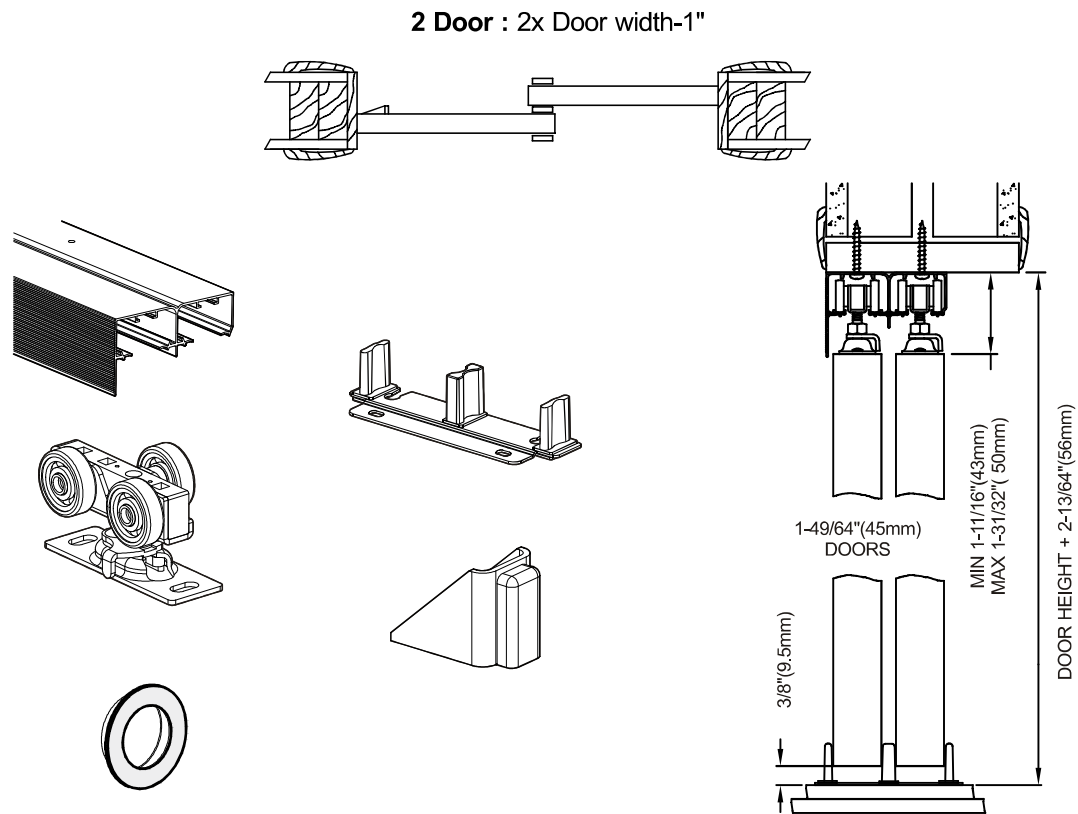
To provide feedback on a particular part, please mark it by circling in the instruction manual and kindly send us a photo.

# WOODEN DOOR OPENING DRAWING



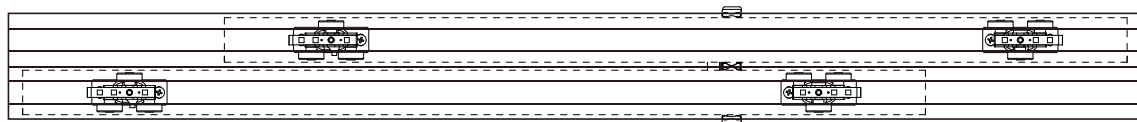
# Installation

**PREPARE OPENING CAREFULLY: MAKE SURE CORNERS ARE SQUARE,  
HEADER IS LEVEL AND JAMBS ARE STRAIGHT.**



## 1 Mount Track to Header

Cut track to fit opening. insert **Hangers** into track and mount to header with 1-1/4"(32mm) #8 pan head screws.



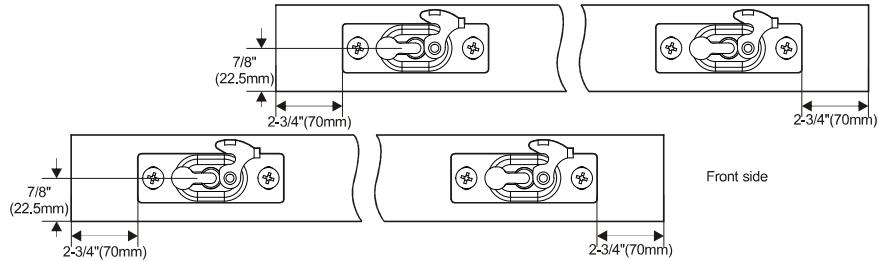
**NOTE:** Alternate hanger wheel assemblies in track to provide even pressure.

# Installation

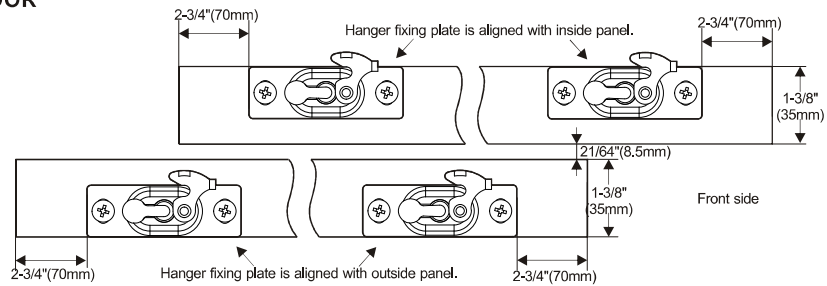
## 2 Mount Hanger Plates to Door

Fasten door plates to top of door, 2-3/4" (70mm) from each edge.

### 45mm DOOR

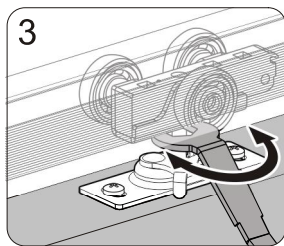
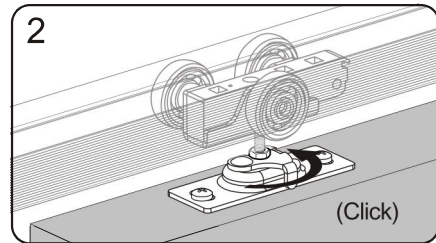
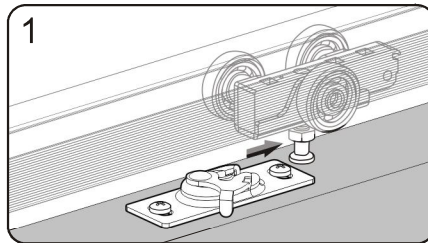


### 35mm DOOR

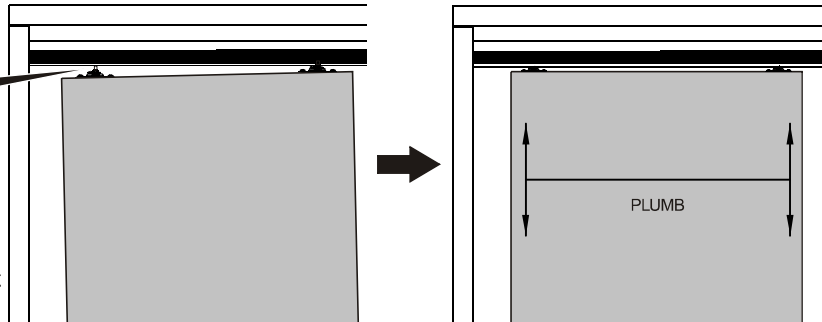


## 3 Hang Doors to Track

Hang Door on front leg of track first. Slide pivot pin of hanger into socket and lock into place with clip. Check for smooth travel. Repeat with rear door.



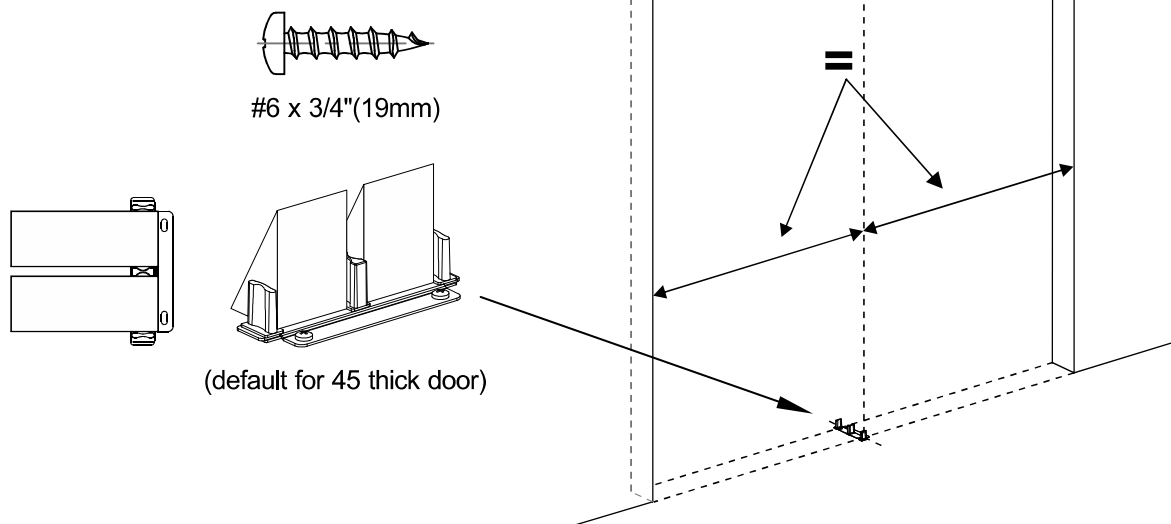
Use spanner to adjust door height



# Installation

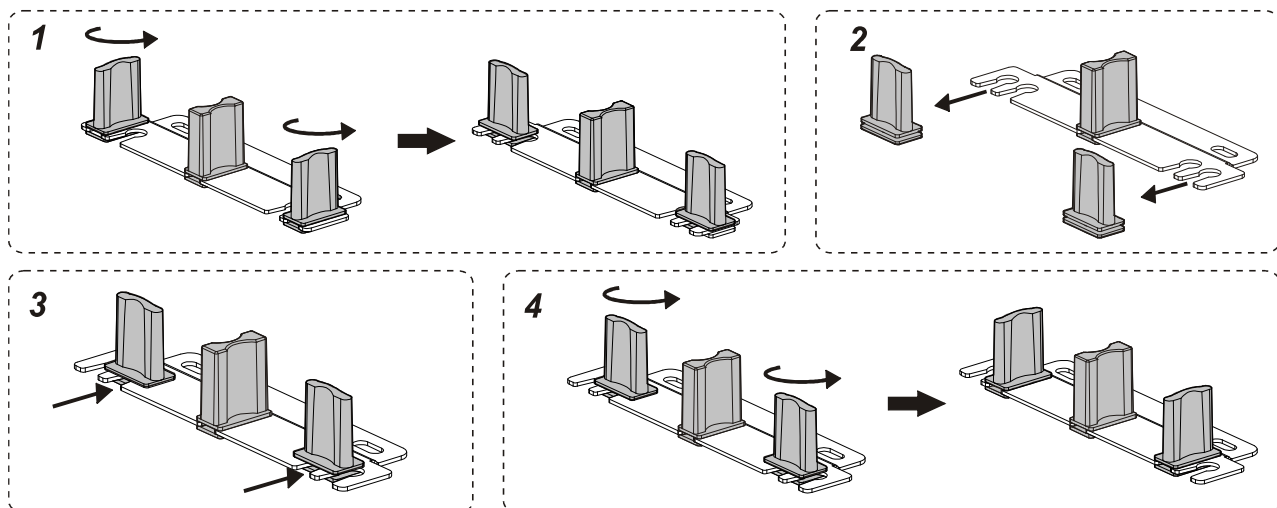
## 4 Install Bottom Guide

Slide both doors to side jamb.  
Place guide between doors and position to plumb, fasten to floor with screws.



## 5 Adjustable Floor Guide

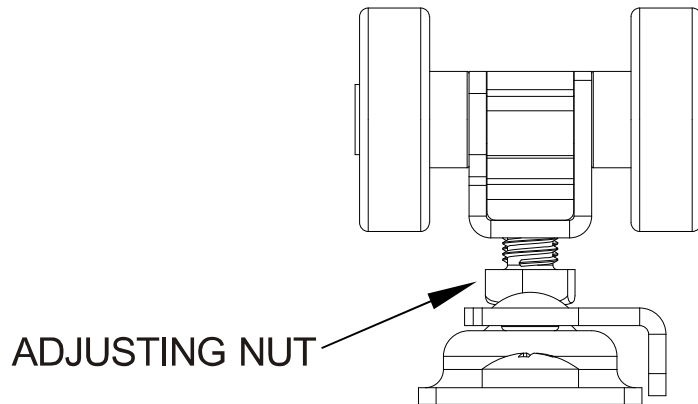
 Floor guide installation instruction for 35mm thick wood door :



# Installation

## 6 Adjust Hangers

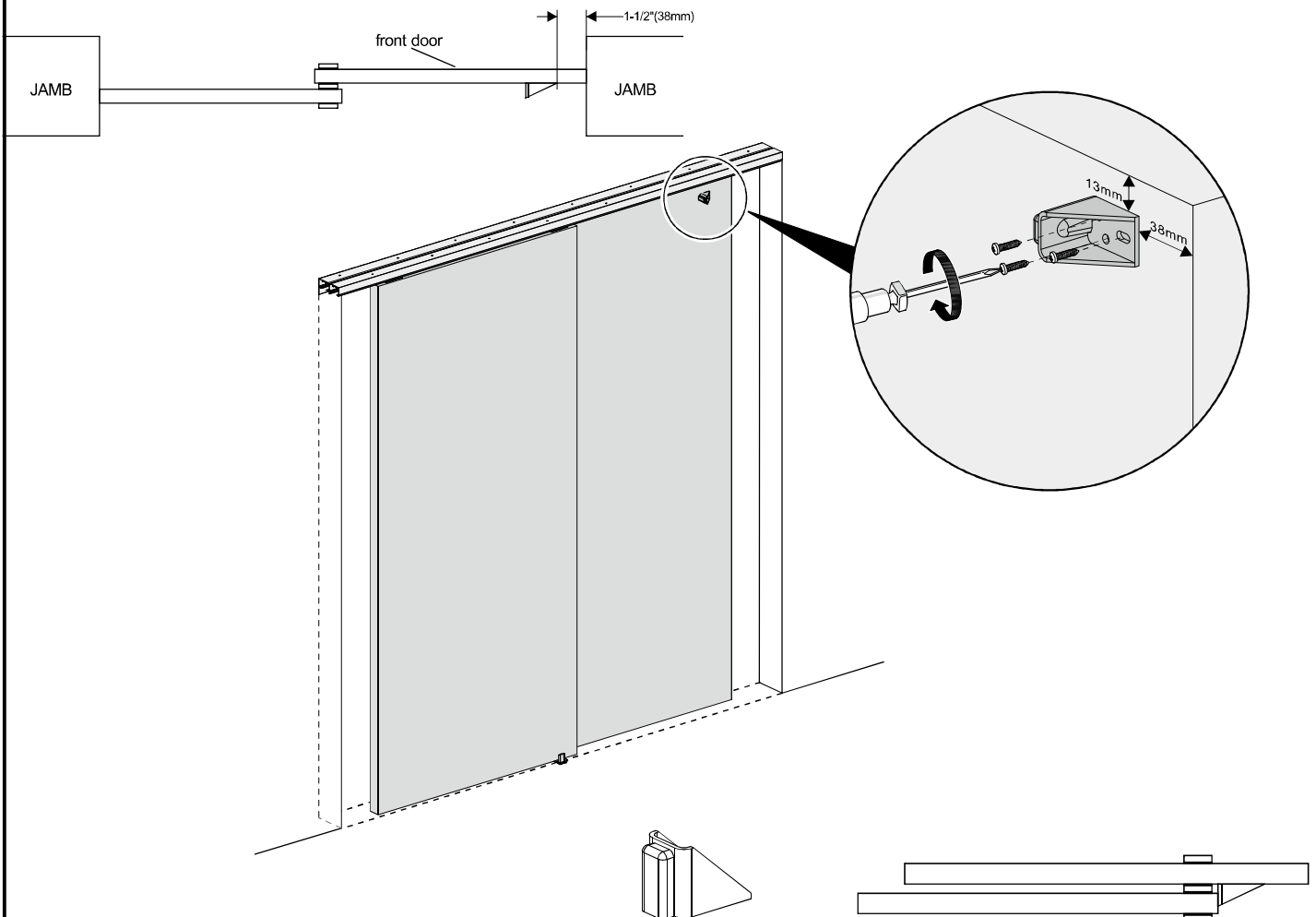
if necessary, to plumb doors with jambs.



## 7 Install Stop

Attach Stop on rear of front door 1-1/2"(38mm) from door edge, 1/2"(13mm) from top (Hollow Core) or 40"(1000mm) from bottom (Solid Core) doors.

**Note:** if other than provided pull is used, adjust location of stop to allow for access to rear door pull.



# Installation

## 8 Install Handle

First, use a tool to make a groove on each of the two doors, with a depth of  $19/32"$  (15mm) and a diameter of  $1\ 31/32"$  (50mm), and finally fix the handle on the door with screws.

