

## VINTAGE FLOOR LAMP

### 3 CAGED LIGHT HEADS



Please read this user manual carefully and thoroughly to ensure your safe and proper use of the product. If you need any help, please feel free to contact our helpful customer

## PACKAGE CONTENTS

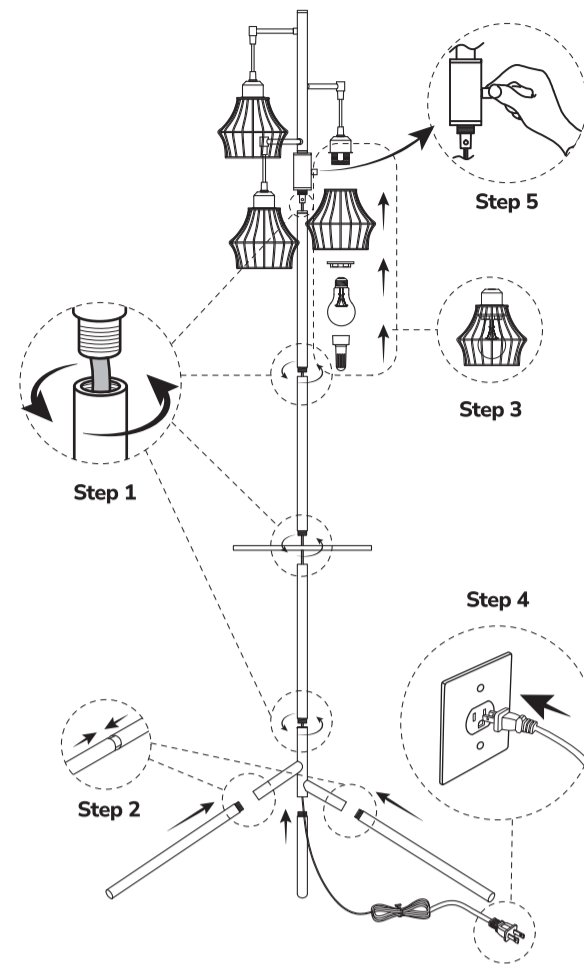
- 1 Floor Lamp with Tray
- 3 Tripod Base Rods
- 3 Lamp Cages
- 3 Cage Fitters
- 3 Bulbs
- 1 Cage Fitter & Bulb Installer

► **LIGHT ASSEMBLY**

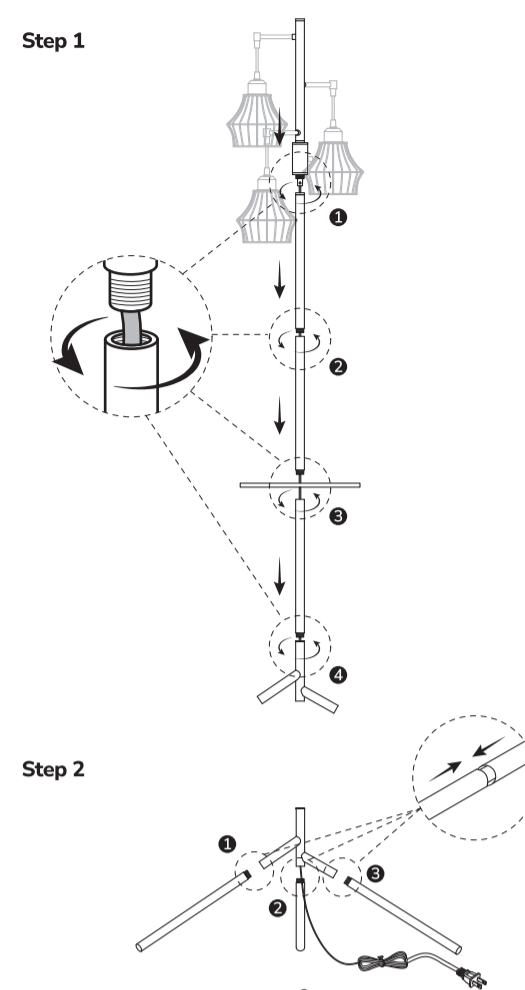
Check if all parts are included and lay them on a soft flat surface to avoid scratching the surfaces.

1. Connect the lamp rods together from top down, ensuring a tight connection between all parts. Check that the cord is not twisted inside to avoid loose connections.
2. Connect the 3 tripod base rods as shown, make sure they form a flat stable tripod base.
3. Use the cage fitters to fix the lamp cages to the light sockets. Then install 3 bulbs to the light sockets.

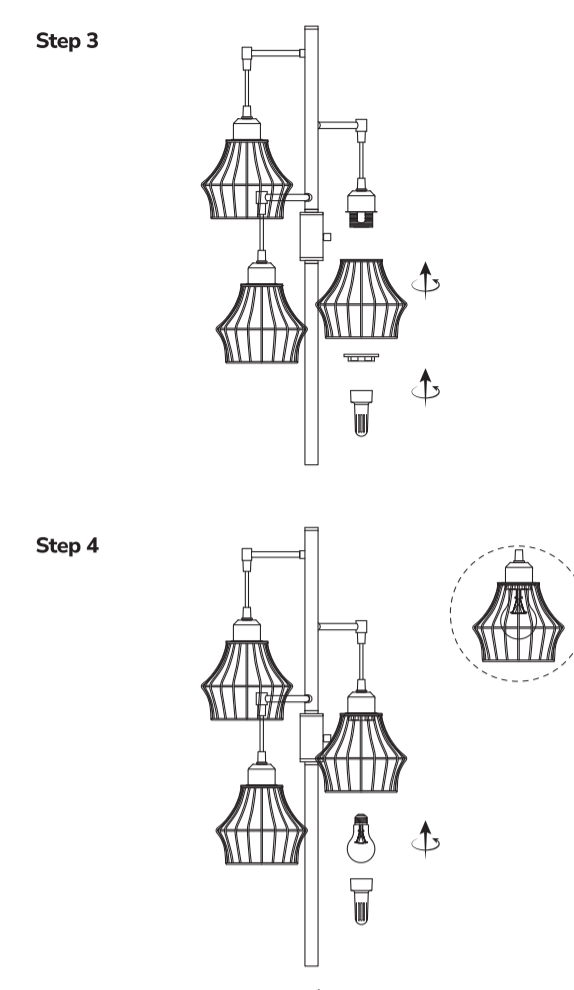
**Note:** When knob is turned to On, the lights turn on when the cord is plugged to the power source, making them compatible with smart outlets.



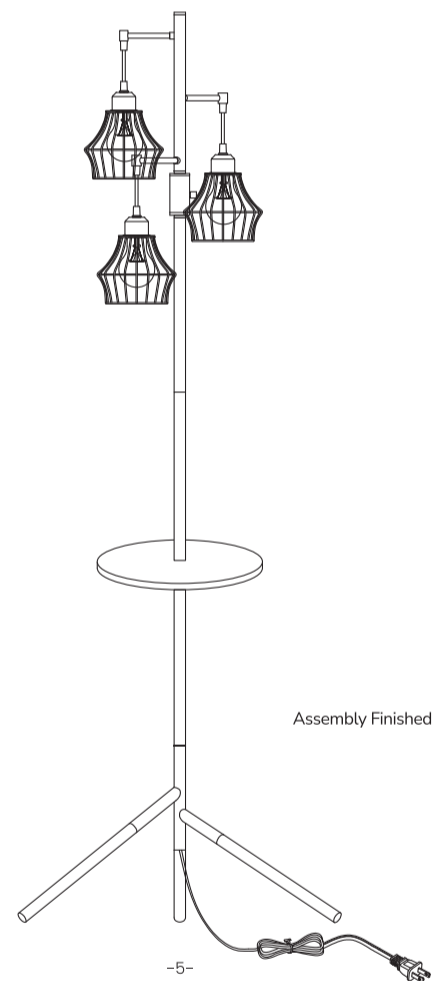
-2-



-3-



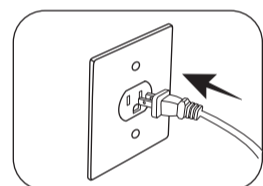
-4-



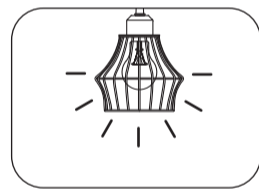
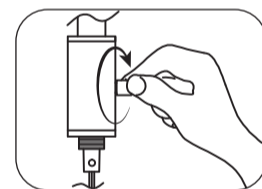
Assembly Finished

-5-

4. Plug the power cord to a standard US/Canada 3-prong or 2-prong electrical outlet.

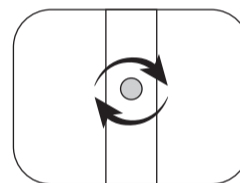


5. Turn the knob clockwise to turn on lights.



-6-

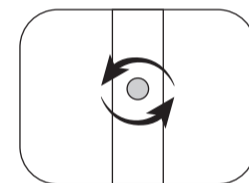
## ► LIGHT OPERATION



Clockwise

Turn on the lights and brighten them.

OFF 

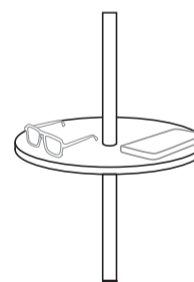


Counterclockwise

Turn down the lights and turn them off.

OFF

**STORAGE PLATFORM**



**Warm Reminder:** Keep items no more than 2.2 lbs in total.

-7-

## SAFETY PRECAUTIONS

- Turn off power switch or unplug the power cord when installing or uninstalling bulbs.
- DO NOT place any ornaments or anything else on the lamp.
- Ensure that the lamp is placed on the flat floor to prevent it from tipping over.
- Avoid exposing the lamp to extreme temperatures, moisture, or direct sunlight.
- Keep the lamp away from flammable materials or substances.

## CARE & MAINTENANCE

- Always unplug the lamp from the power source before cleaning.
- Use a soft, dry cloth to clean the lamp. Avoid using harsh chemicals or abrasive materials that may damage the surface.
- To maintain optimal performance, periodically check and tighten all connections.
- When not using the lamp for an extended period of time, unplug the power adapter and store the lamp in cool dry places.

-8-

## SPECIFICATIONS

AC Input	120V~, 60Hz
Rated Power (in total)	27W (9W*3)
Max Light Output	900 lm
Color Temperatures (CCT)	2700K
CRI	80+
Dimming Range	0%-100%

## WARRANTY

We back our products with a free **1-year** limited warranty. If there is a quality issue with the product you purchase under normal use, please contact us within the warranty period for a solution. **Note that accidental or intentional damage is not included in the warranty coverage.**

-9