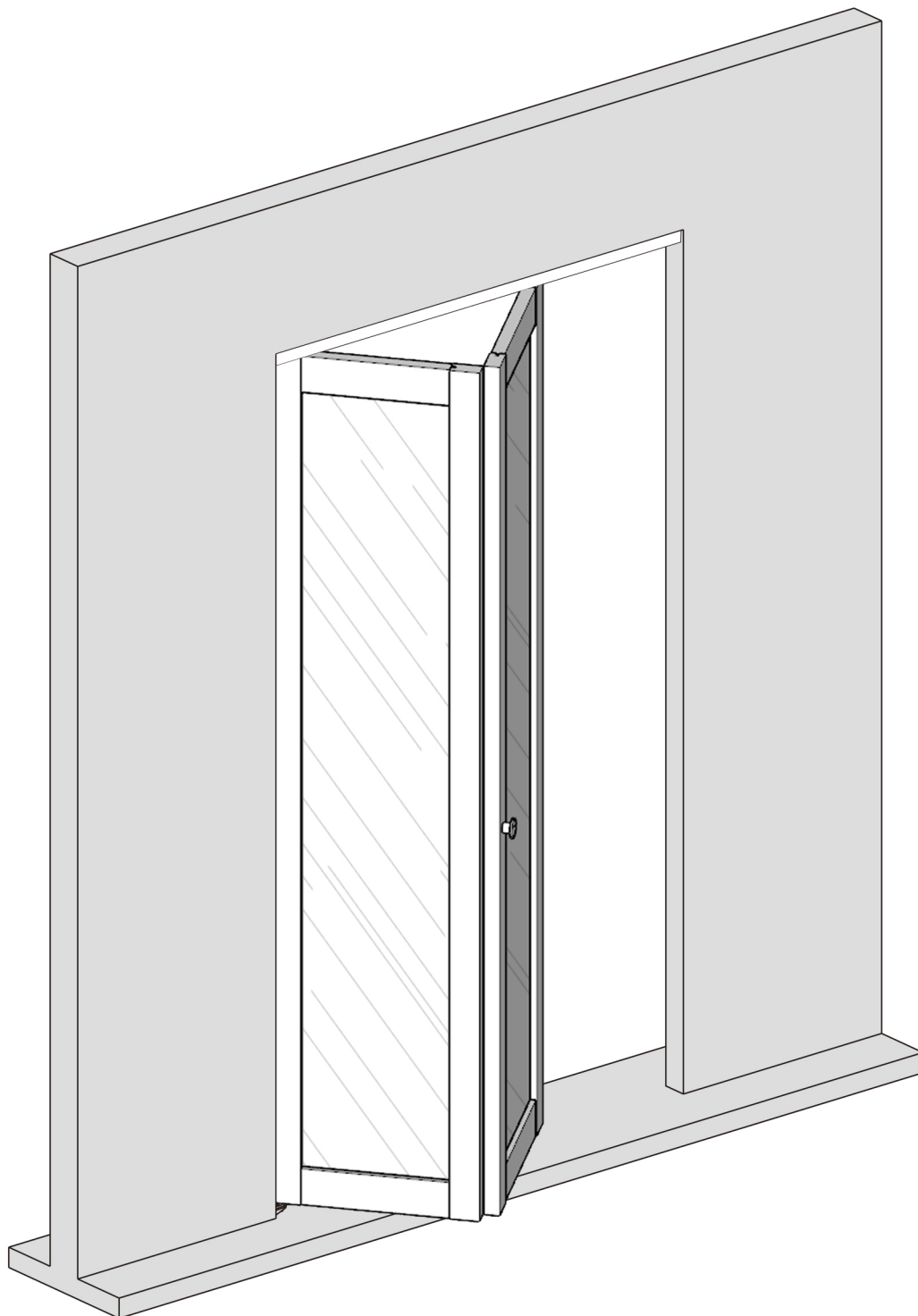


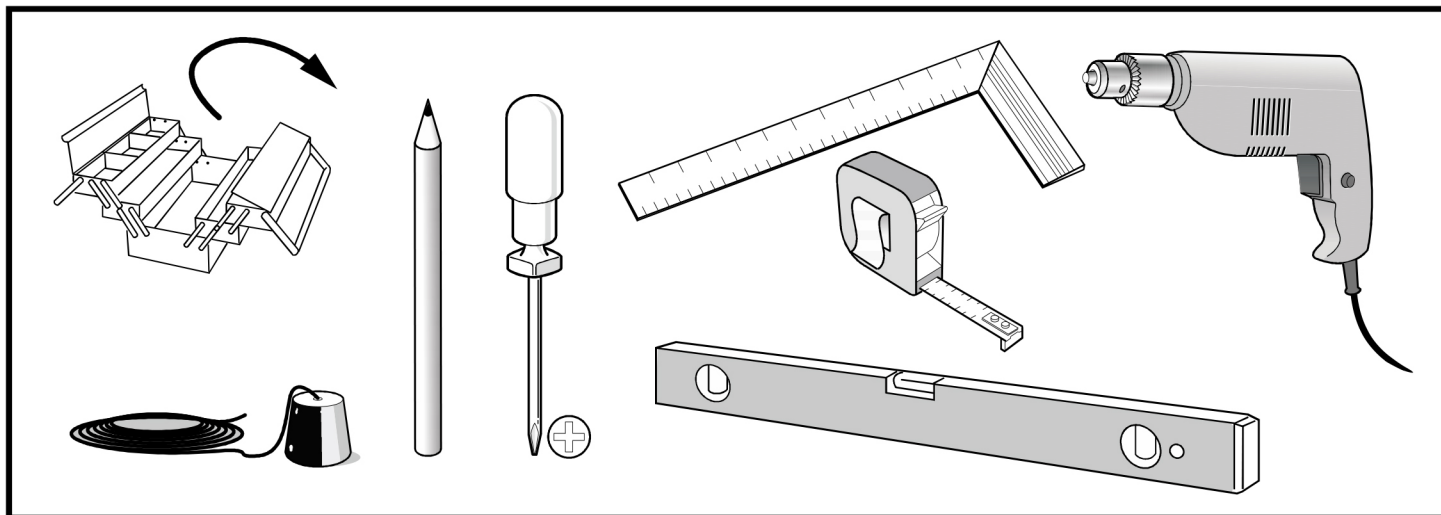
Installation Manual

Please note we are always ready to support you. Don't hesitate to contact us when you have any questions, we will try our best to resolve your issue ASAP
(yoursupport@163.com)

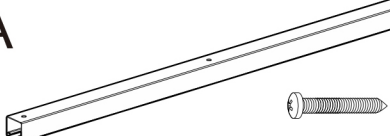
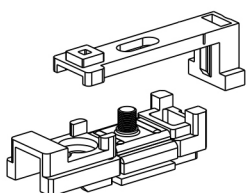
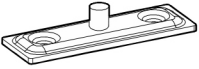
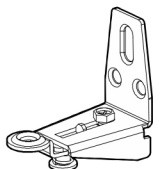
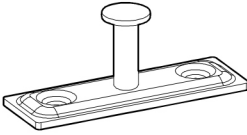
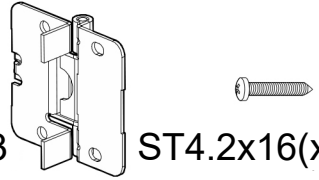
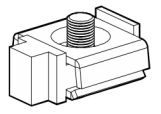
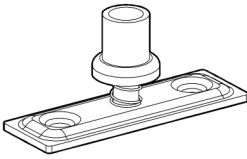
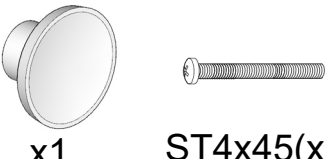
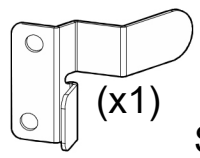
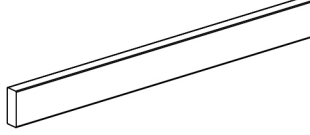
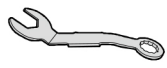



Pre-installation

TOOLS REQUIRED



HARDWARE INCLUDED

A  x1 ST4.2x32	B  x1	C  x1
D  x1	E  x1	F  x3 ST4.2x16(x12)
G  x1	H  x1	I  x1 ST4x45(x1)
J  Only for 4 door (x1) ST4.2x16(x2)	K  x1	 x1  ST4.2x45(x9)

NOTICE Please retain these instructions for future reference

- Do not stand on or use any part of this item as a step ladder.
- Firmly secure all bolts, screws and knobs before use.
- Reconfirm that all bolts, screws and knobs are secure every 90 days.
- Fasten screws loosely during initial assembly. Do not firmly tighten the screws until the item is completely assembled.
- Do not use or store this item in the proximity of open flame or combustible chemicals.
- Be aware that some parts are heavy and have sharp edges.
- Do not use this item in a way inconsistent with the manufacturer's instructions as this could void the product warranty.
- If any parts are missing, broken, damaged, or worn, please contact us for assistance.

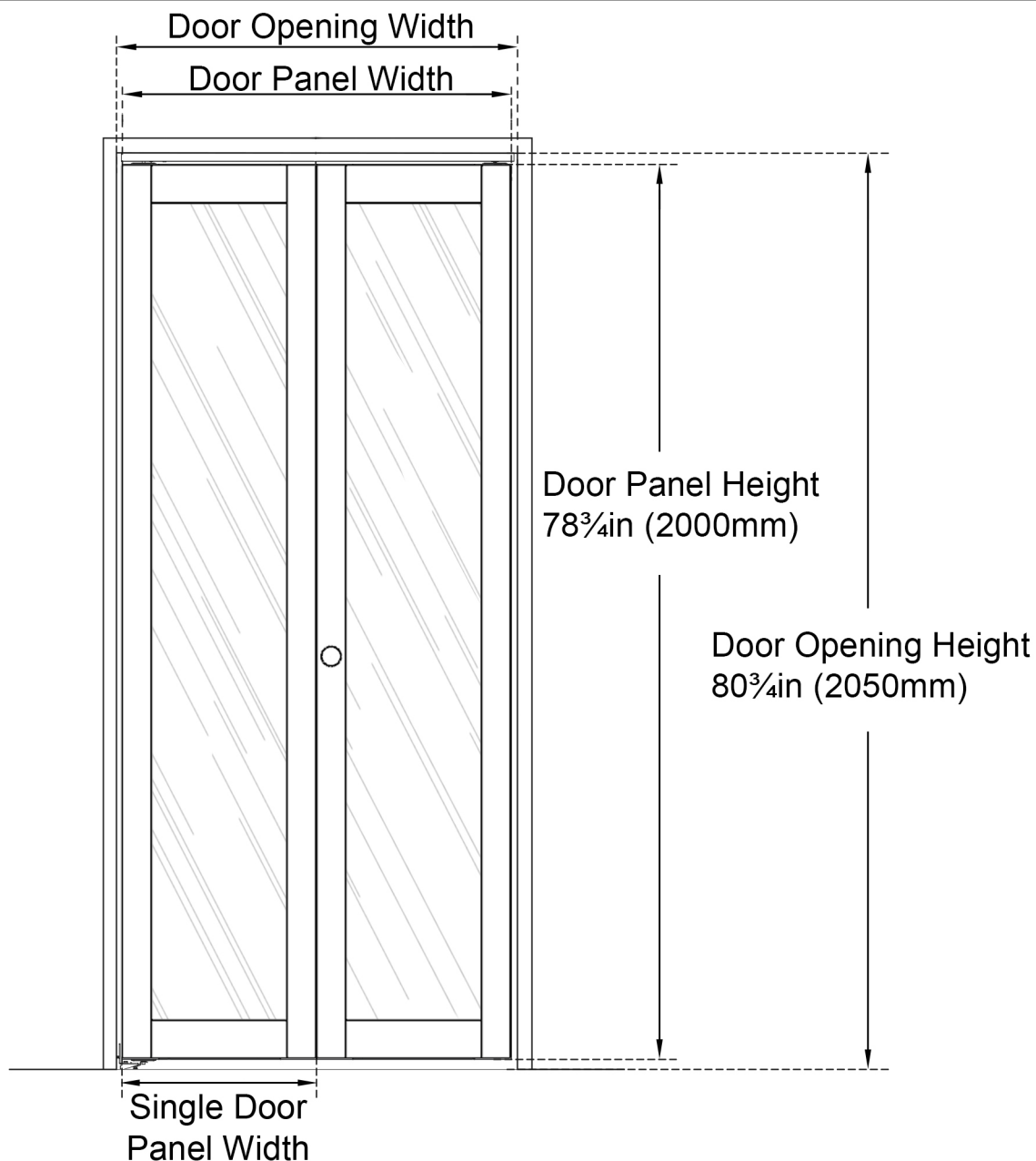
For product assistance and warranty information, please contact us before return this product.

Customer Service: yoursupport@163.com

Please provide us with following information, so that it will be easier to resolve your problem smoothly.

- 1. Order ID:**
- 2. Pictures of Your Items Damage or Parts Missing:**
- 3. Pictures of all the labels on the package.**

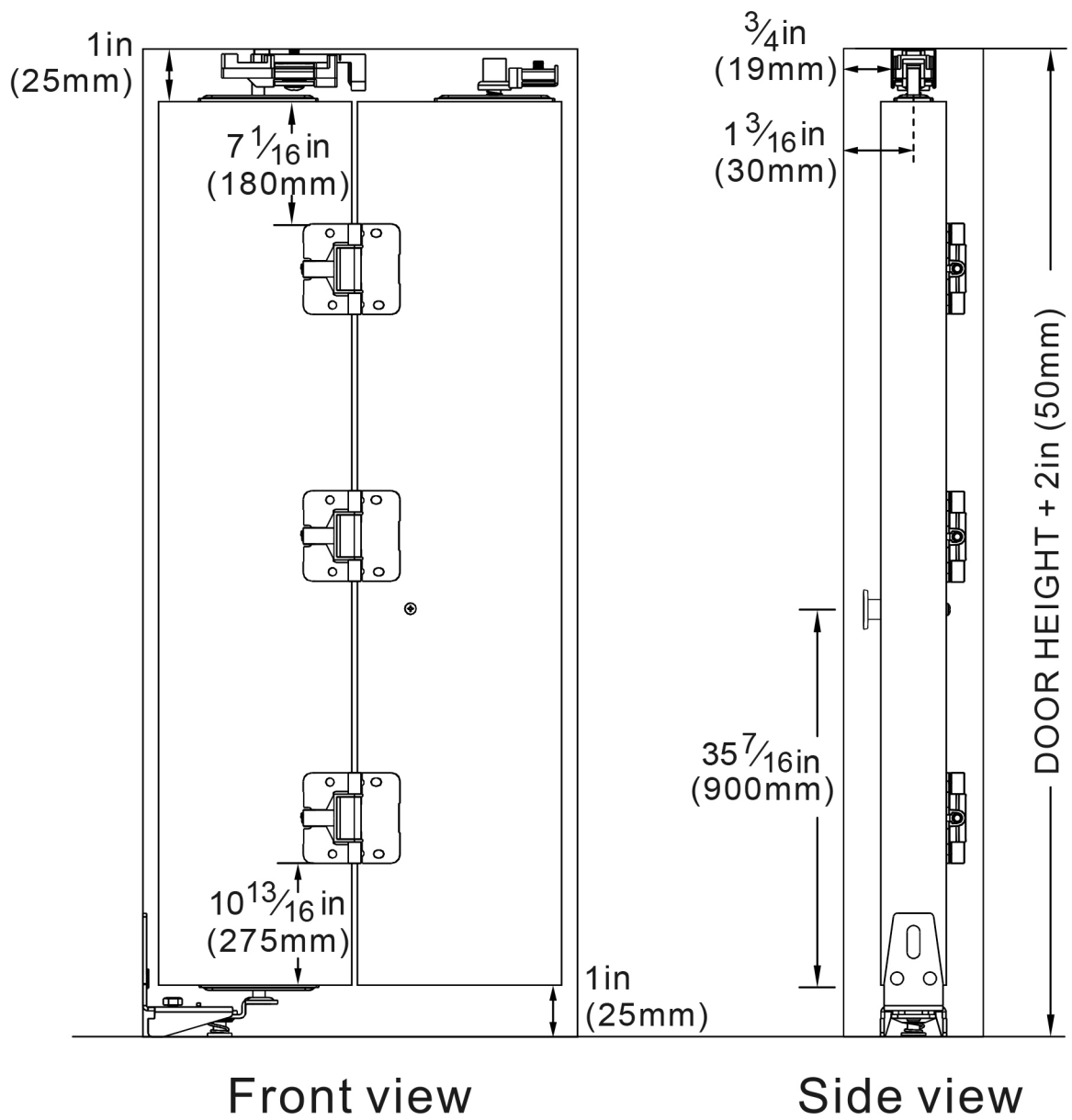
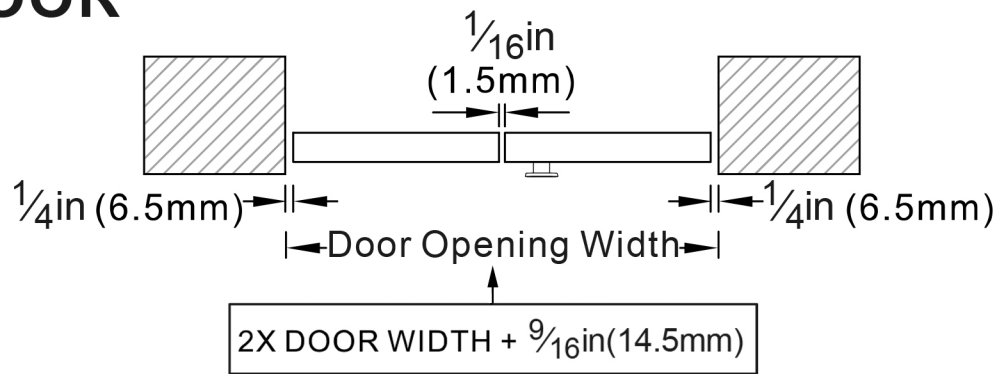
Installation



Size Name	Door Opening Width	Door Panel Width	Single Door Panel Width	Door Panel Height	Door Opening Height
24in*78 $\frac{3}{4}$ in	24in	23 $\frac{1}{2}$ in	11 $\frac{3}{4}$ in	78 $\frac{3}{4}$ in	80 $\frac{3}{4}$ in
30in*78 $\frac{3}{4}$ in	30in	29 $\frac{1}{2}$ in	14 $\frac{3}{4}$ in	78 $\frac{3}{4}$ in	80 $\frac{3}{4}$ in
36in*78 $\frac{3}{4}$ in	36in	35 $\frac{1}{2}$ in	17 $\frac{3}{4}$ in	78 $\frac{3}{4}$ in	80 $\frac{3}{4}$ in
42in*78 $\frac{3}{4}$ in	42in	41 $\frac{1}{2}$ in	21 $\frac{3}{4}$ in	78 $\frac{3}{4}$ in	80 $\frac{3}{4}$ in

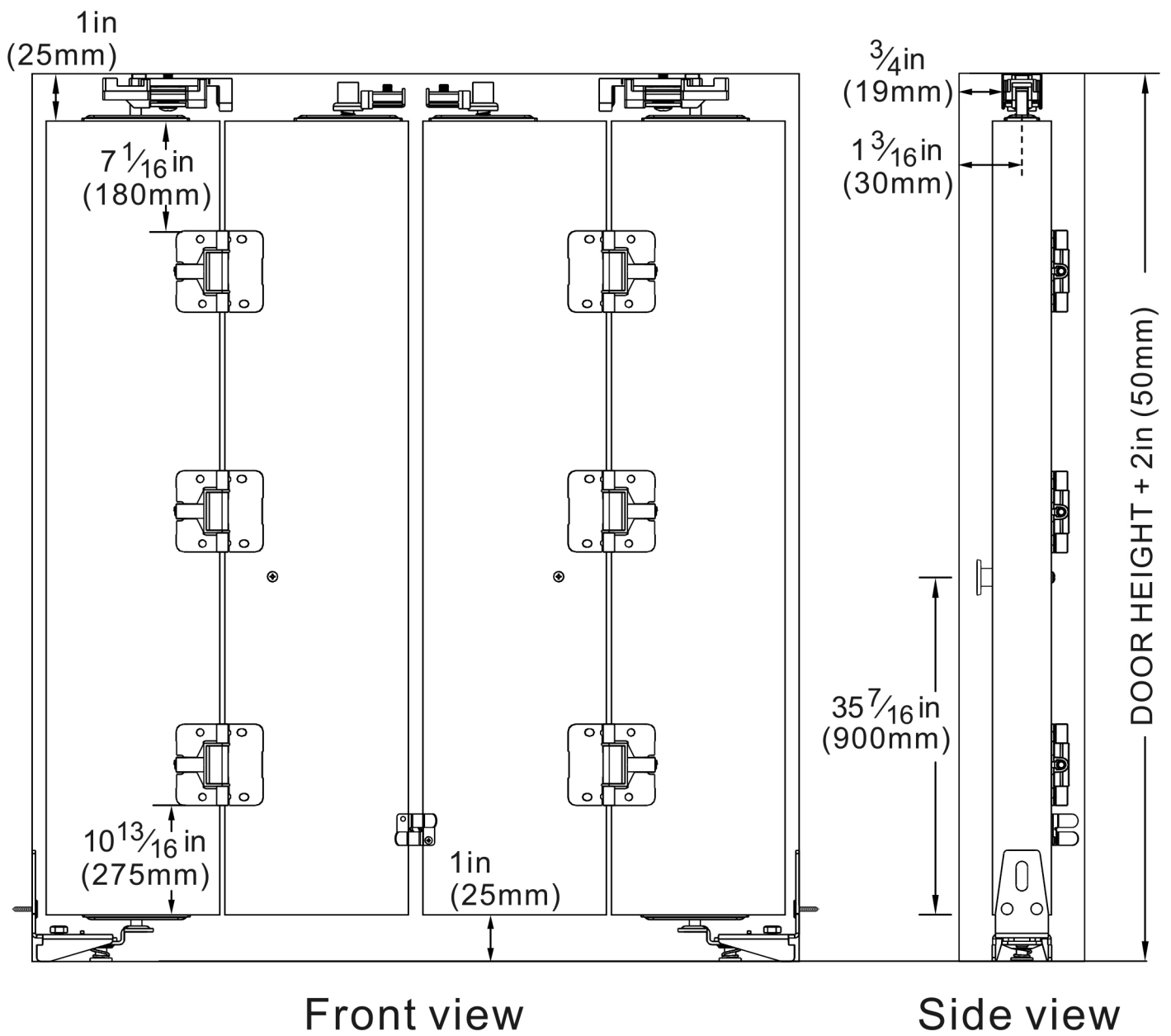
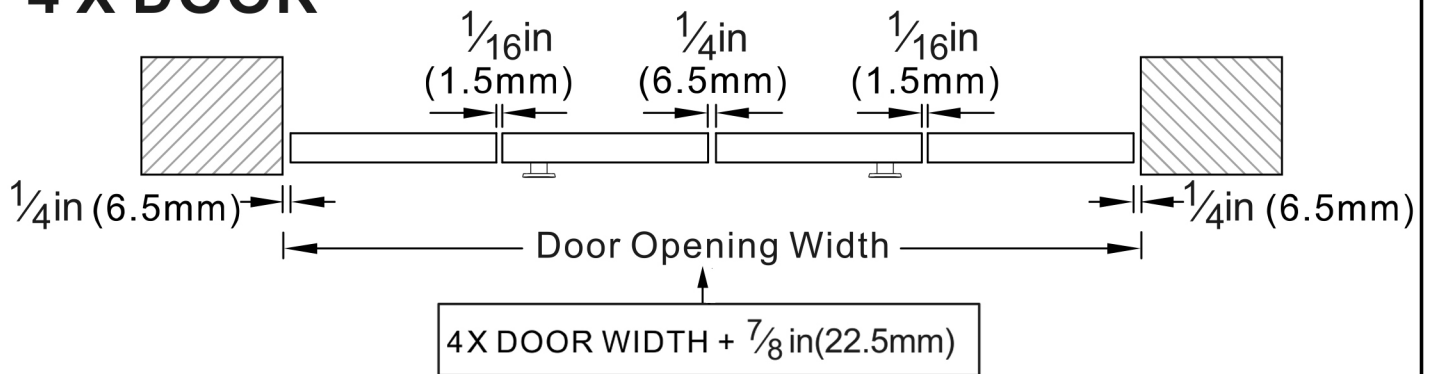
Installation

2 X DOOR

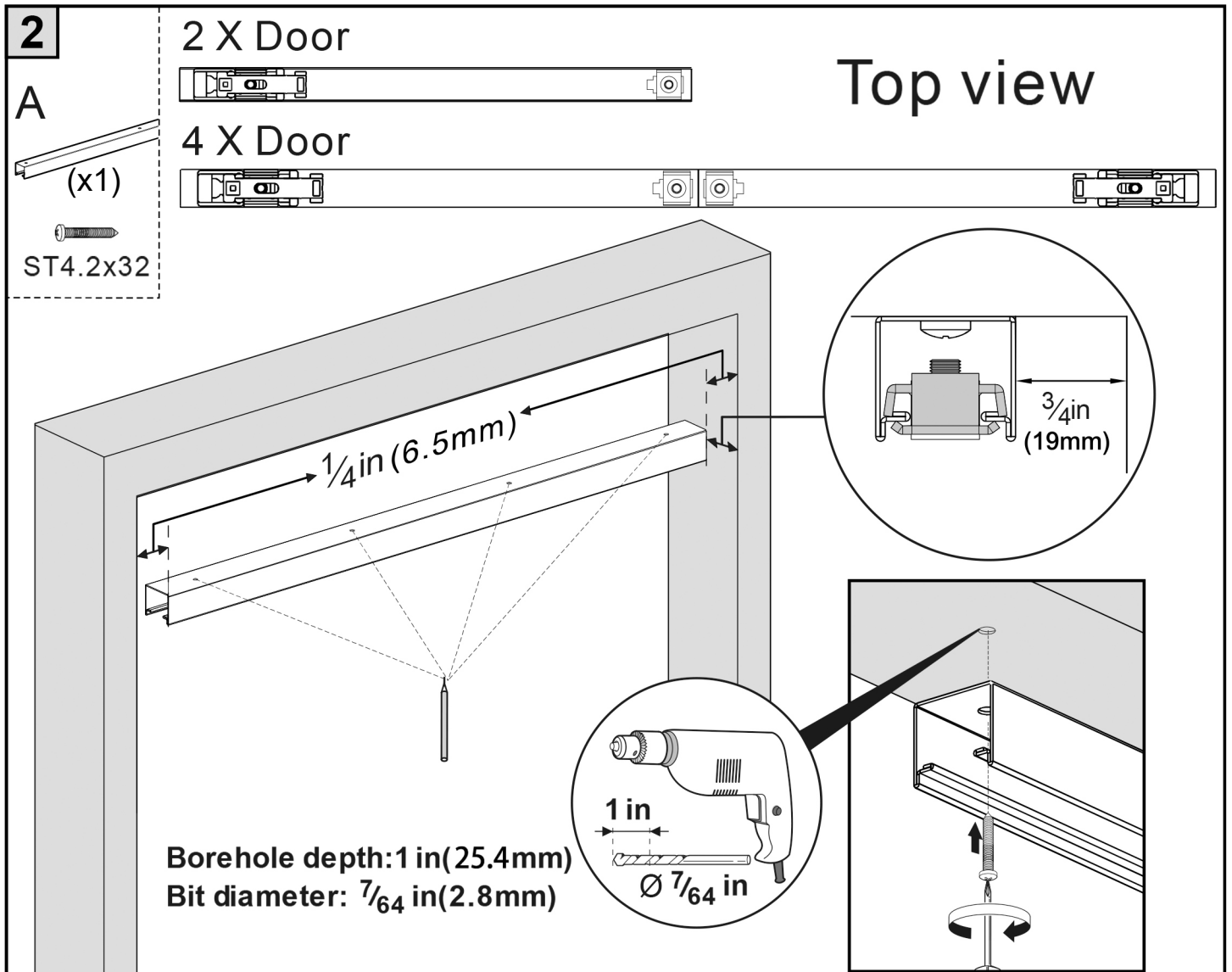
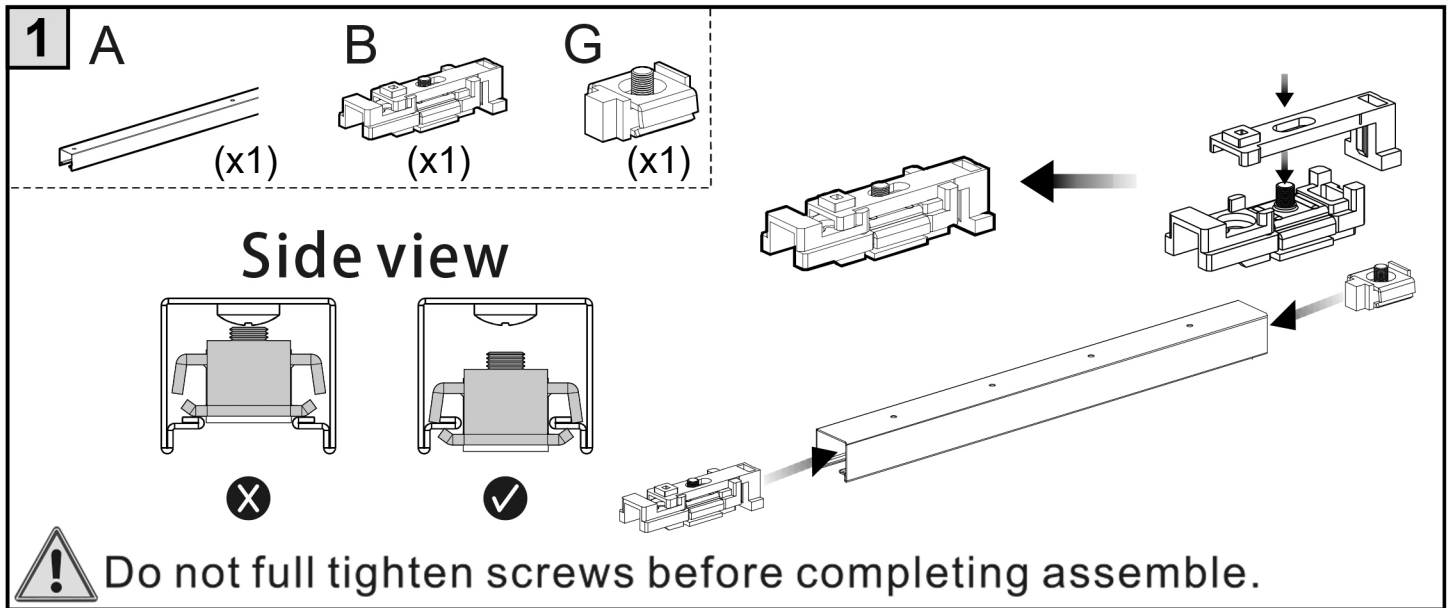


Installation

4 X DOOR



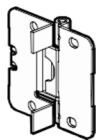
Installation



Installation

3

F

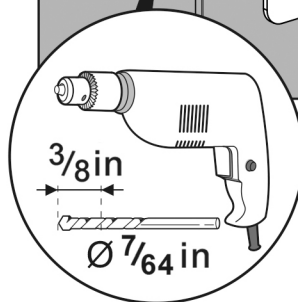
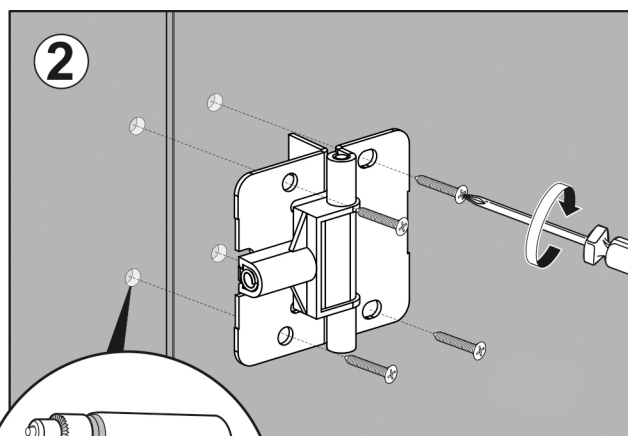
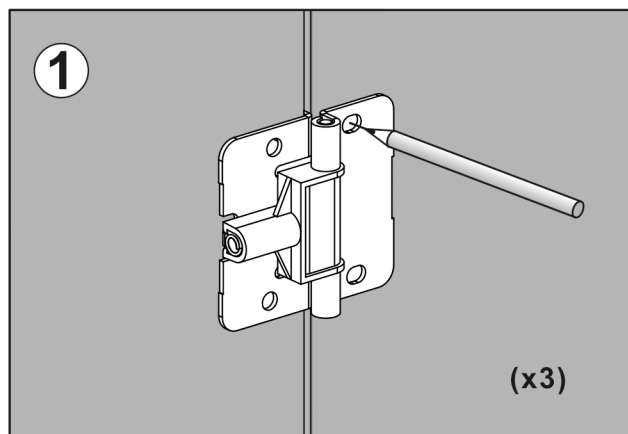
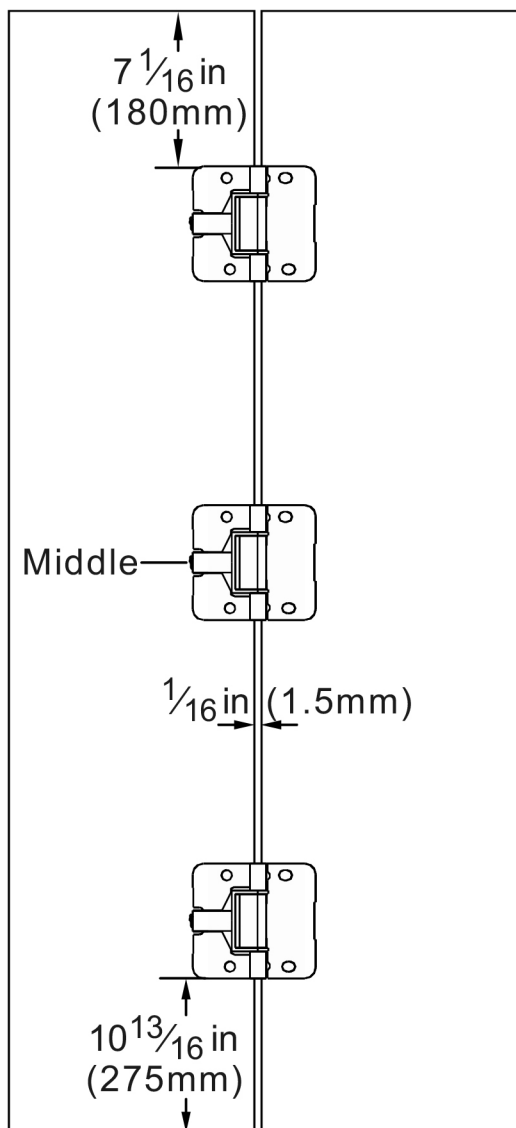


(x3)



ST4.2x16

(x12)

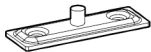


Borehole depth: $\frac{3}{8}$ in (10mm)
Bit diameter: $\frac{7}{64}$ in (2.8mm)

Installation

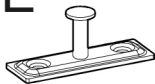
4

C



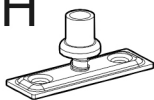
(x1)

E



(x1)

H



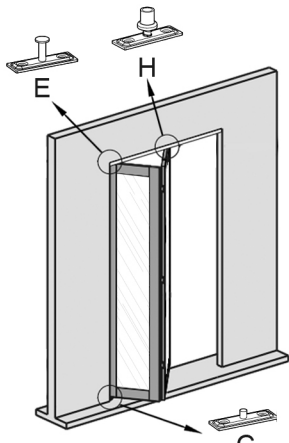
(x1)



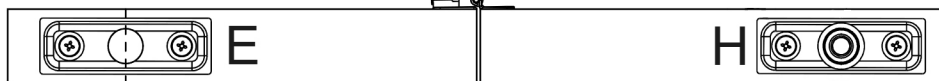
ST4.2x25
(x6)

2 X DOOR

LEFT HAND SWING

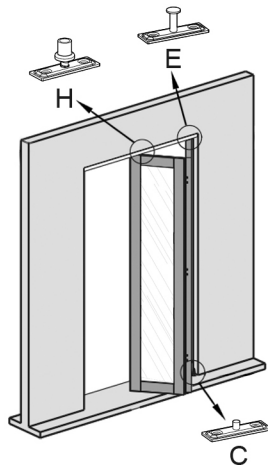


TOP OF DOOR



BOTTOM OF DOOR

RIGHT HAND SWING



TOP OF DOOR



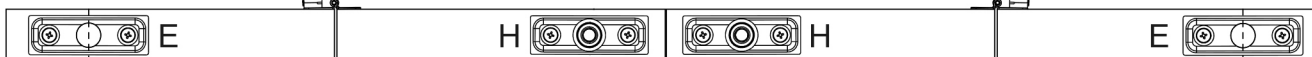
BOTTOM OF DOOR

Install pivot plates to top and bottom of door panel as shown.

4 X DOOR

LEFT HAND SWING

TOP OF DOOR



BOTTOM OF DOOR

RIGHT HAND SWING

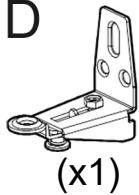


BOTTOM OF DOOR

Installation

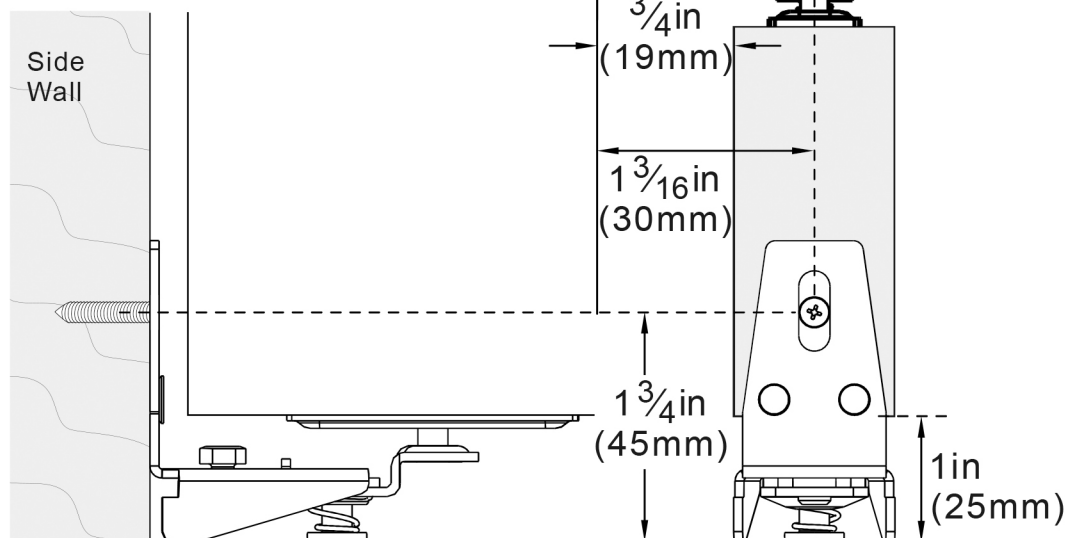
5

D

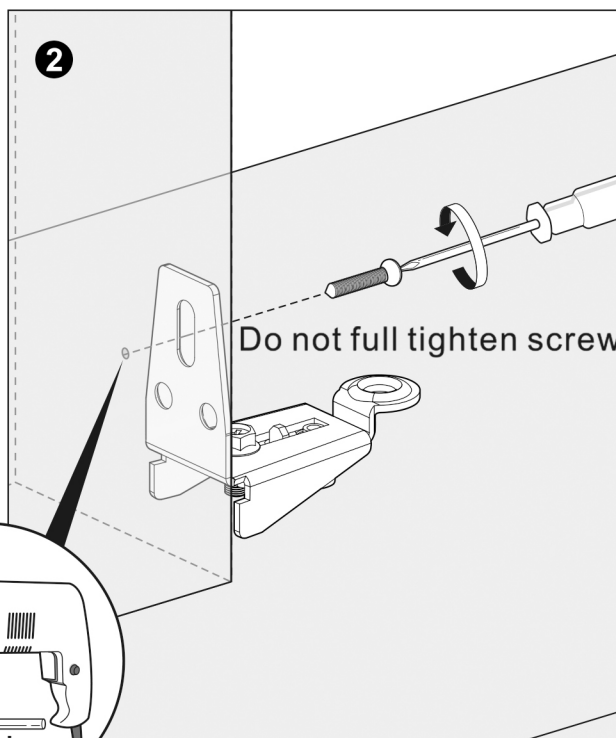
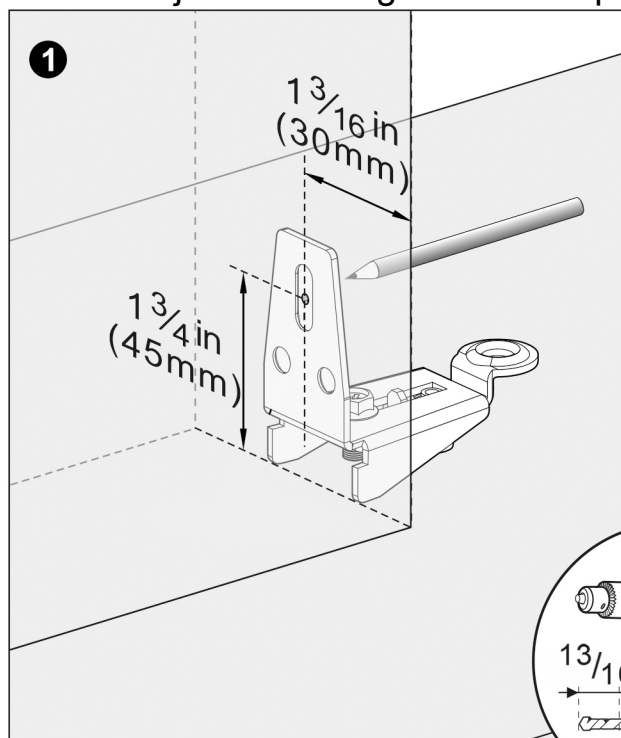


ST4.2x25
(x1)

Mark hole location of bottom pivot bracket on side jamb. Fasten to side jamb with one ST4.2 X 25 flat head screw.




Only top screw first, and please do not screws full tighten, it need adjustment height refers step 6



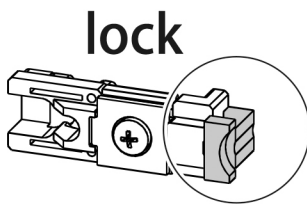
Borehole depth: $\frac{13}{16}$ in (20mm)
Bit diameter: $\frac{7}{64}$ in (2.8mm)

Installation

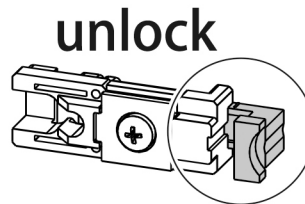
6


ST4.2x25
(x2)

Ensure track bracket lock is in the unlocked position.



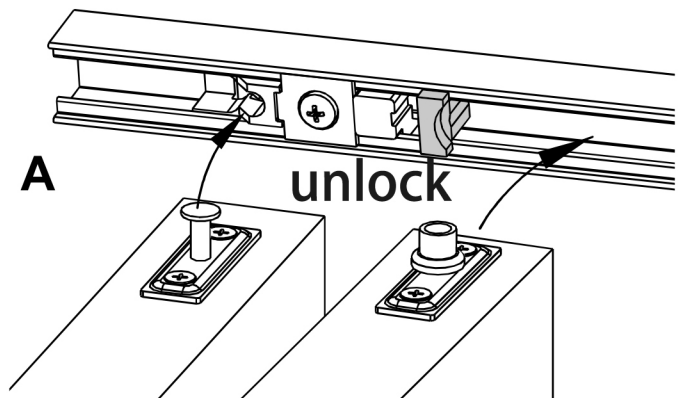
lock



unlock



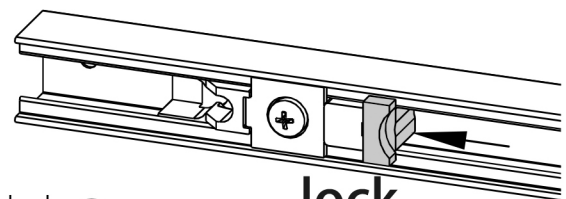
(A) Fold door and place panel guide into track. Insert top pivot pin into receptor of track bracket lock and firmly seated.



A

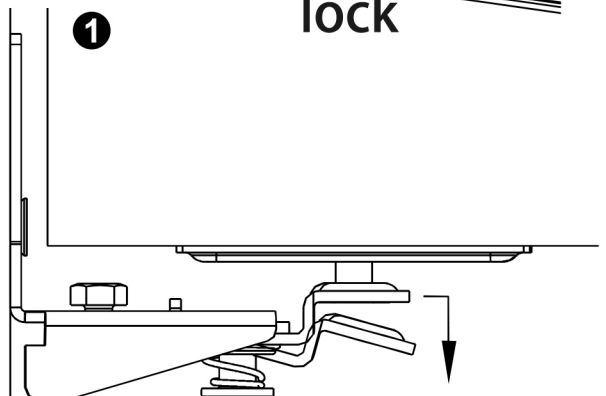
(B) Slide tab lock toward pin so that door panel is hanging from top pivot pin.

B

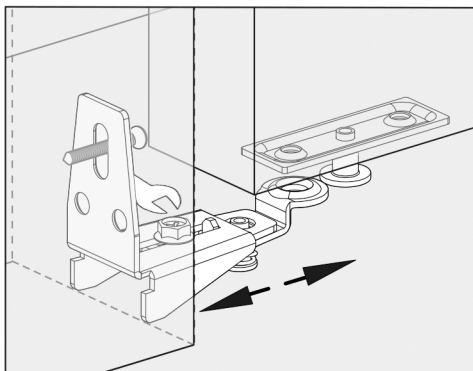


(C) Depress bottom pivot bracket socket arm and insert bottom pivot pin. Secure bottom pivot bracket with other 2 screws. Use a wrench for horizontal adjustment through track bracket lock and bottom pivot bracket.

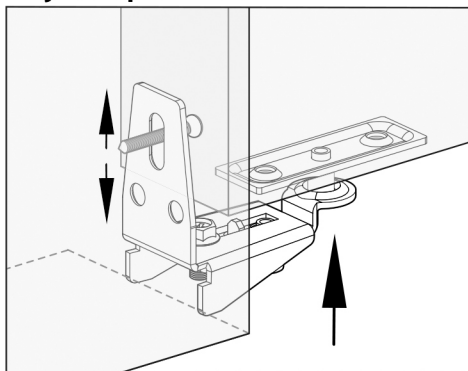
C



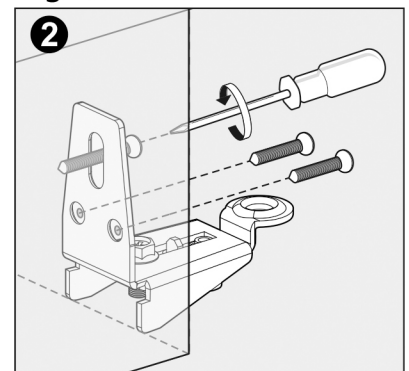
Adjust left and right



Adjust up and down



Tighten screws



Installation

7

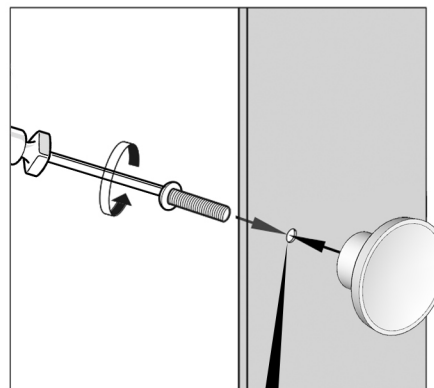
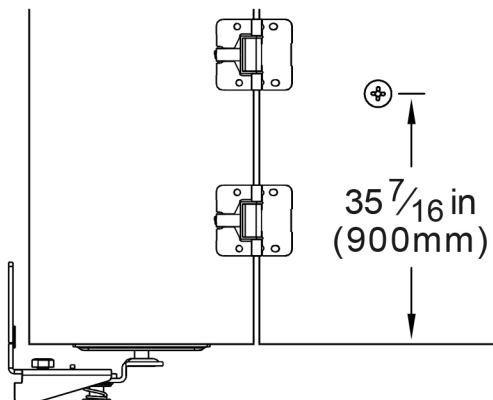
Install door pull.



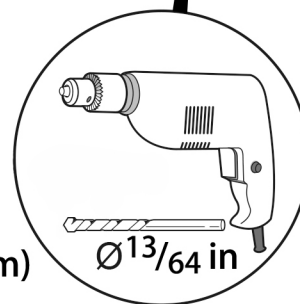
(x1)



ST4x45
(x1)

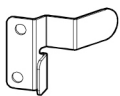


Drill out a hole
Bit diameter: $\frac{13}{64}$ in (5mm)



8

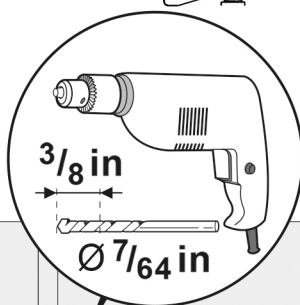
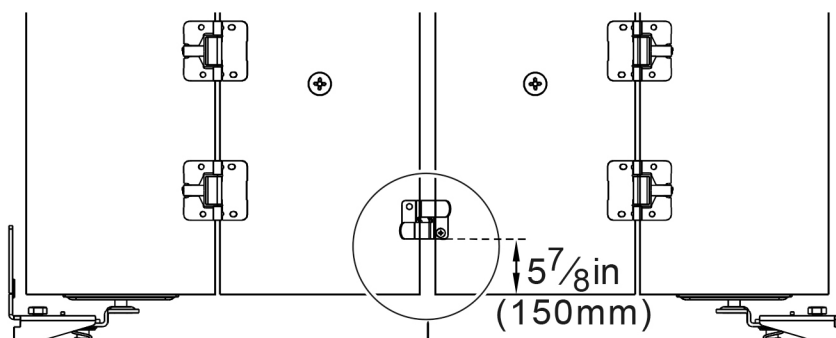
Mount aligner on back side of lead doors.
(4 door sets only)



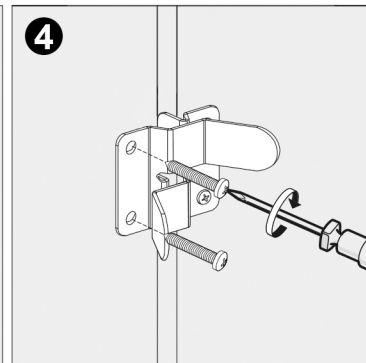
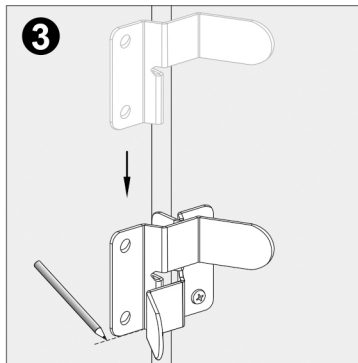
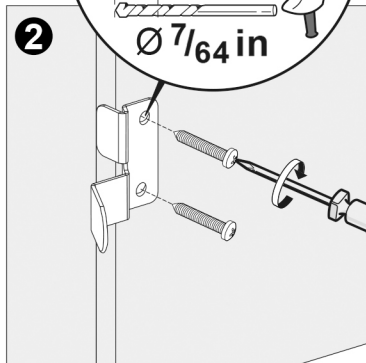
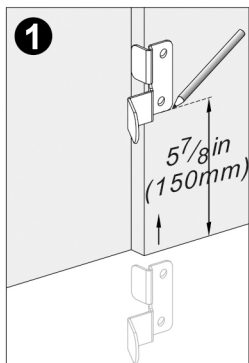
(x2)



ST4.2x16(x4)



Borehole depth: $\frac{3}{8}$ in (10mm)
Bit diameter: $\frac{7}{64}$ in (2.8mm)

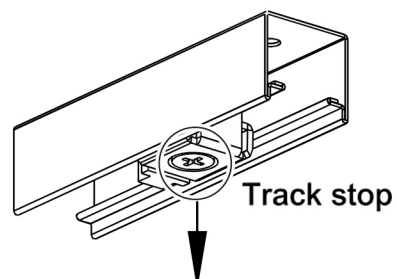


Installation

9

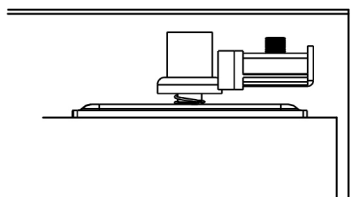
Adjust track stop

Close doors, slide track stop until it touches panel guide. Then open doors, move track closer to panel guide and tighten. Doors should “snap” shut yet open easily by a sight pull on the pull.

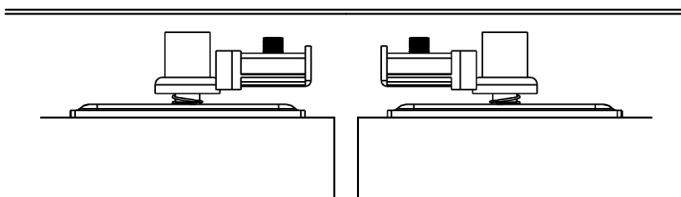


Please screws tighten after completing assemble

2 door

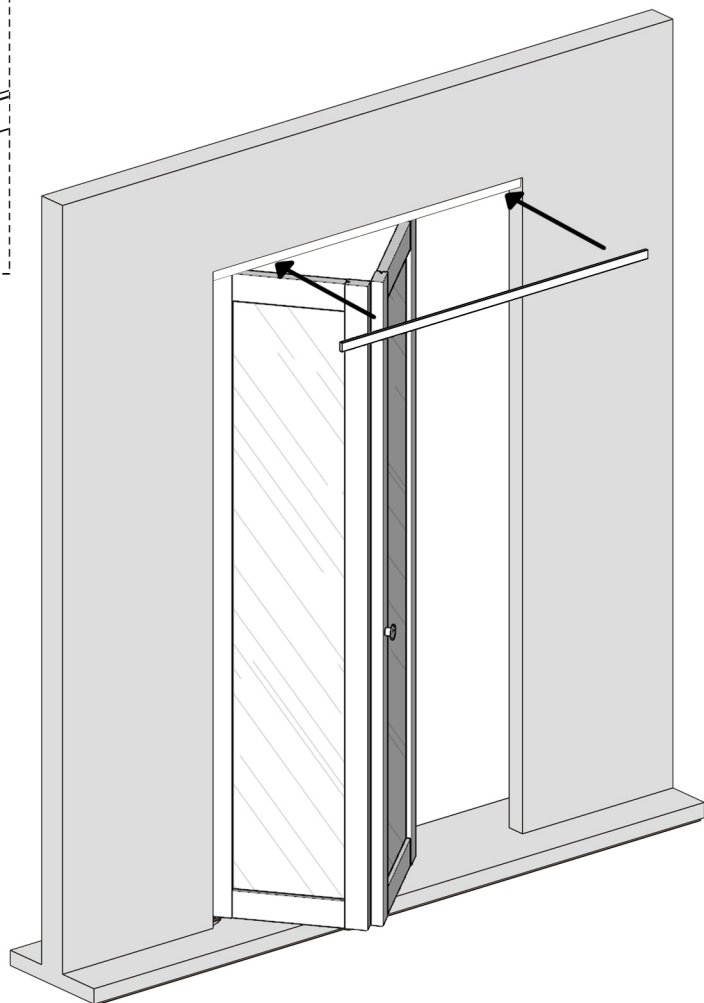
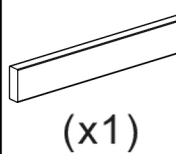


4 door

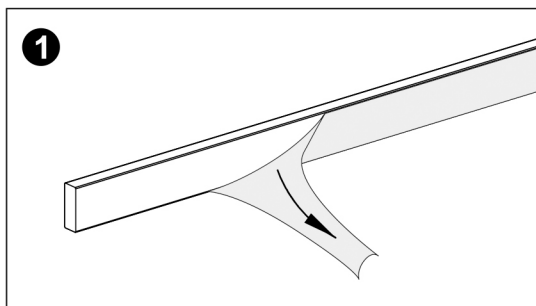


10

K



1



2

