

Assembly Instructions



ASSEMBLY RATING

The Assembly Rating is a 5-point system that shows the degree of effort needed in assembling a specific product (with 1 being easy and 5 being difficult). For some products, two persons are recommended.

Tools Required for Assembly:

Allen Wrench



EASY  DIFFICULT

Thank you for your purchase!

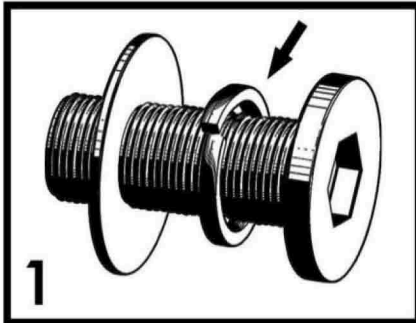
We hope you will enjoy your new product for many years to come. Our commitment to providing quality products does not simply end when a purchase is made. We stand behind our products and will provide any support needed in order for you to fully enjoy your purchase. Your satisfaction is the greatest recognition we could have.

Because we value your trust in our company, we will do our best to meet your service expectations. Should you have any assembly related questions, parts replacement requests, comments or suggestions, please feel free to contact us any time. To help expedite the service, please have the assembly instructions available, along with your order receipt.

ASSEMBLY & CARE ADVICE

FOR YOUR FURNITURE TO LAST, CORRECT ASSEMBLY AND PROPER MAINTENANCE ARE NECESSARY. PLEASE FOLLOW THE INFORMATION PROVIDED BELOW TO FULLY ENJOY YOUR FURNITURE.

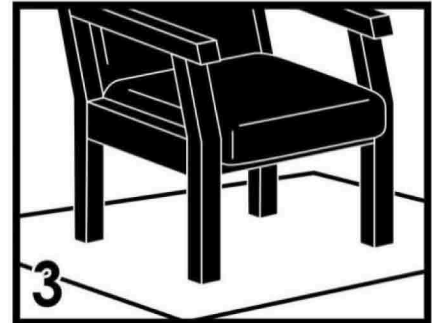
BASIC ASSEMBLY TECHNIQUES



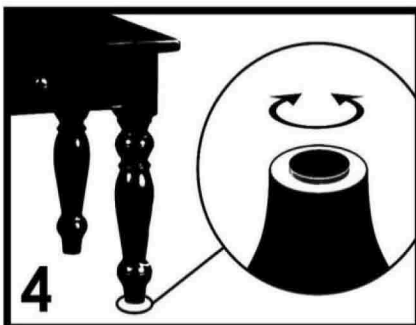
When lock or spring washer is used in an assembly, please make sure the lock or spring washer is placed between the larger flat washer and the head of the screw or bolt.



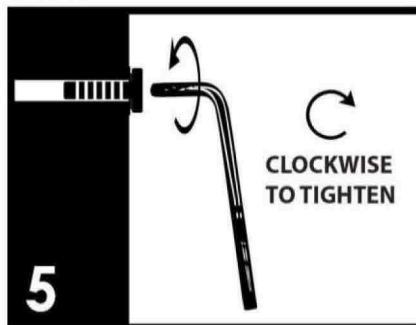
Position each part correctly and insert screws or bolts into their respective holes by hand tighten or using the proper hand tool. Only tighten when step is completed or when instructed to do so.



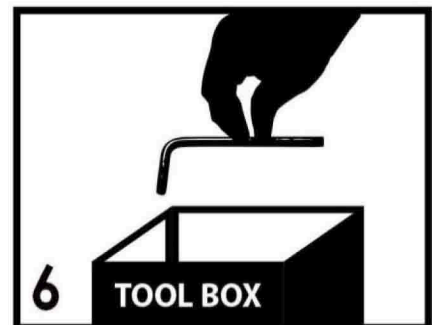
Use cardboard or carpet area when assembling furniture to prevent scratches. Make sure the furniture rests on a flat and level surface with each leg evenly touching the floor.



Some furniture comes with height adjustment knobs underneath each leg. To lower or to raise each leg, you need to turn clockwise or counterclockwise, respectively.



Make sure all parts are properly aligned, then use the appropriate hand tool to completely tighten the bolts or screws. Do not use power tools and do not overtighten.

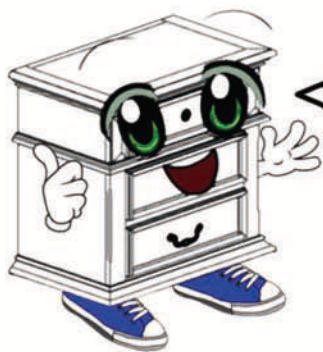


Save the instructions and store the Allen wrench or any supplied tool for later maintenance. After two weeks, check and tighten any loose hardware and repeat again every six months thereafter.

IT IS THE USER'S RESPONSIBILITY TO MAINTAIN THE FURNITURE. THE HARDWARE MAY LOOSEN OVER TIME AND MAY CAUSE THE FURNITURE TO BE WOBBLY AND UNABLE TO SUPPORT ITS INTENDED WEIGHT CAPACITY. THIS MAY LEAD TO COLLAPSE AND MAY CAUSE SERIOUS INJURY.



FAILURE TO FOLLOW THE GUIDELINES ABOVE MAY RESULT IN INJURY AND/OR PROPERTY DAMAGE.

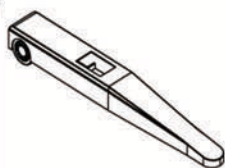


Before you begin, please read Page 3 of "Assembly and Care Advice".

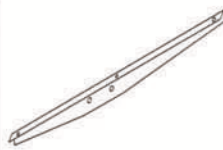
And remember, do not tighten until each step is completed or instructed.

MD

Parts List



#1 x 2pcs
Leg



#6 x 1pc
Left Support



#2 x 1pc
Left Lifting support



#7 x 1pc
Button with line



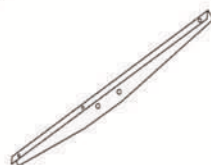
#3 x 1pc
Right Lifting Support



#8 x 1pc
Table Top



#4 x 1pc
Middle Support Plate



#9 x 1pc
Right Support



#5 x 2pcs
Support



#10 x 1pc
Table Cap

Hardware List



#A x 2pcs
Leg Pad



#F x 1pc
Allen Wrench 6MM



#B x 18pcs
Screw M6X12



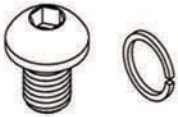
#G x 1pc
Wrench



#C x 8sets
Screw&Washer M6x25



#H x 1pc
Allen Wrench 5MM



#D x 4sets
Screw&Gasket M8x10



#I x 3pcs
Plastic Circle



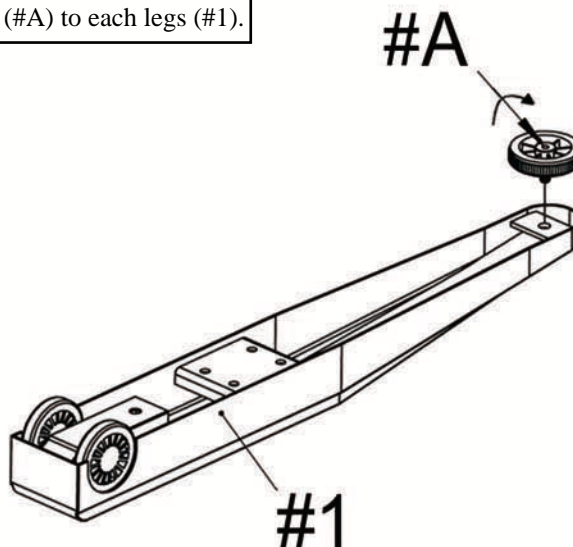
#E x 3pcs
Screw M6x15



#J x 3pcs
Nail ϕ 4X16

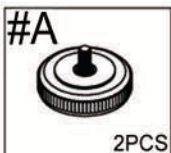


Attach leg pad (#A) to each legs (#1).



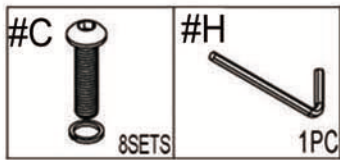
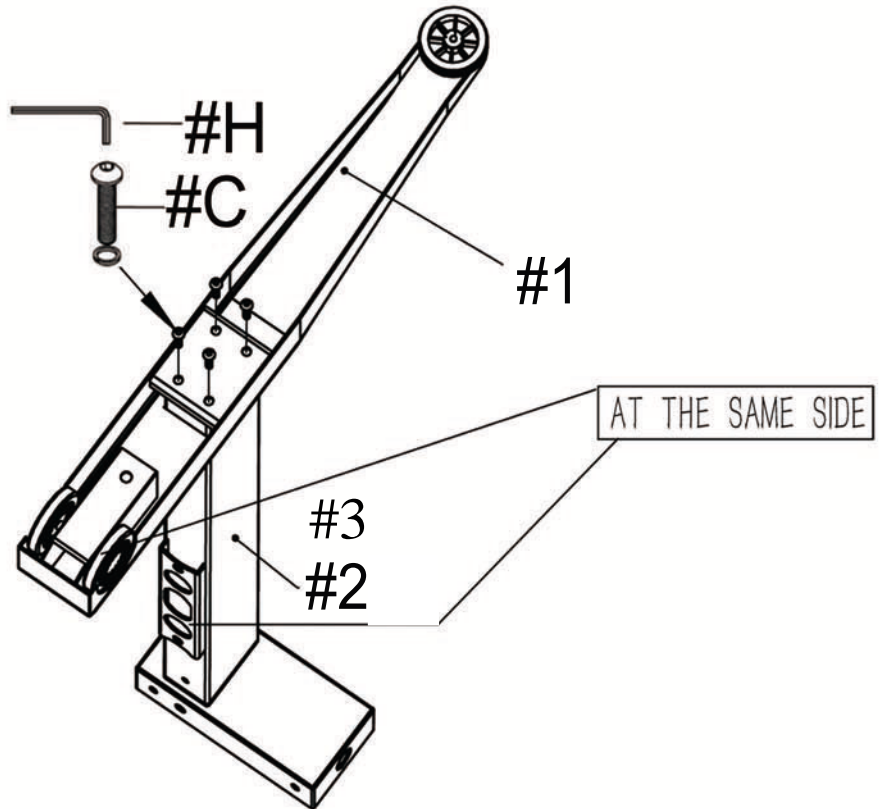
#1

x 2





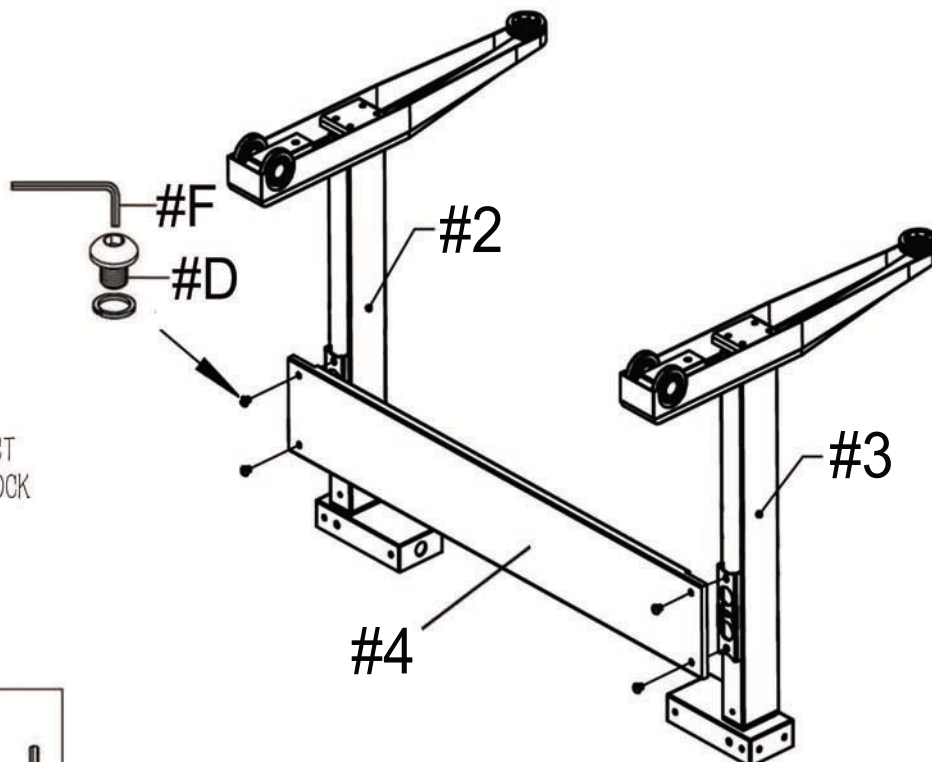
Align a leg (#1) to the holes of the left lifting support (#2) and right lifting support (#3).
Secure with bolts (#C).



x 2



Align middle support plate (#4) to the holes of the left (#2) and right (#3) lifting supports.
Secure with bolts (#D), but do not fully tighten.



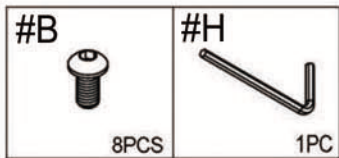
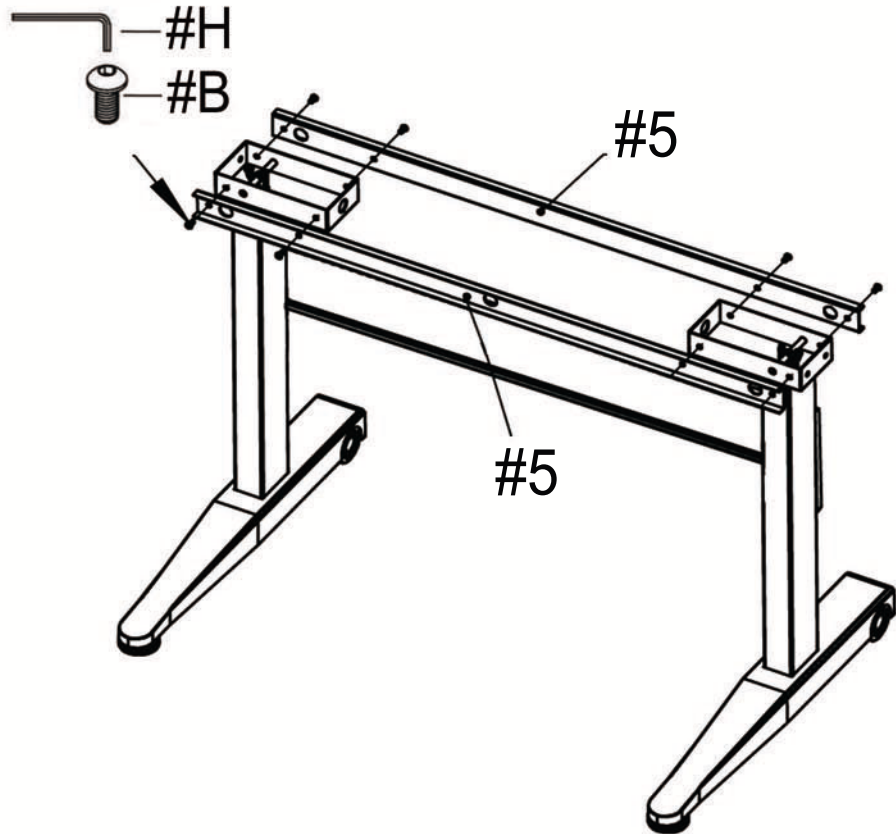
ATTENTION:
JUST TO CONNECT
D AND DON'T LOCK



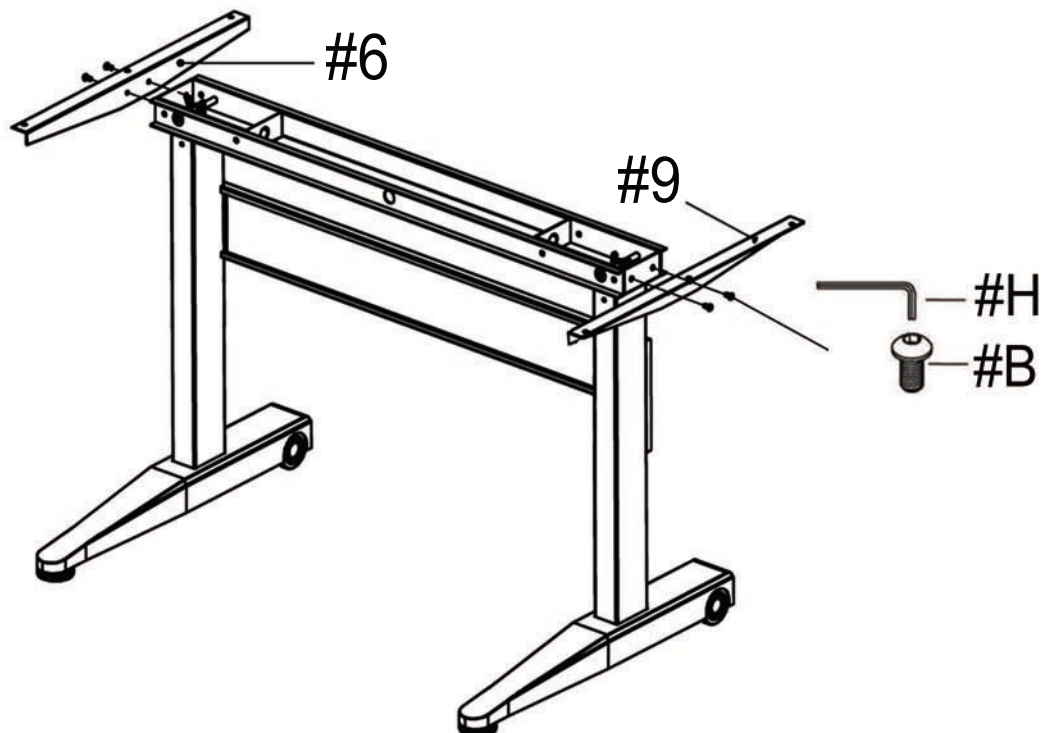


Align supports (#5) to the holes of the lifting supports (#2,3). Secure with bolts (#B), then fully tighten bolts (#D) from steps (#3).

ATTENTION:
LOCK B FIRST AND
THEN LOCK D

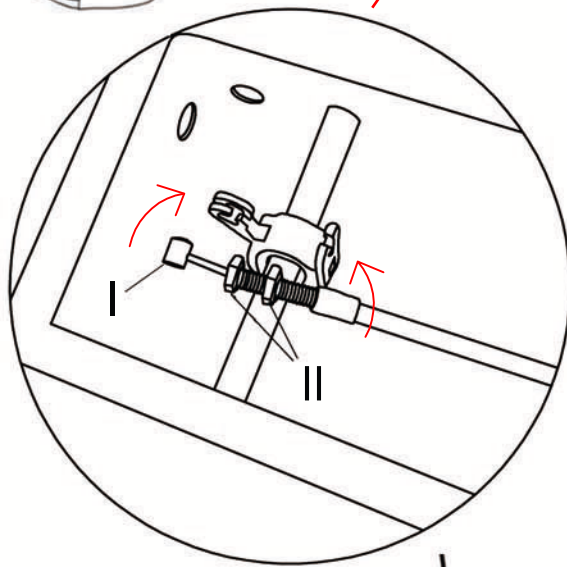


Align left support (#6) to the holes of the left lifting support (#2). Secure with bolts (#B).
Align right support (#9) to the holes of the right lifting support (#3). Secure with bolts (#B).

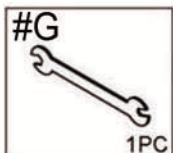
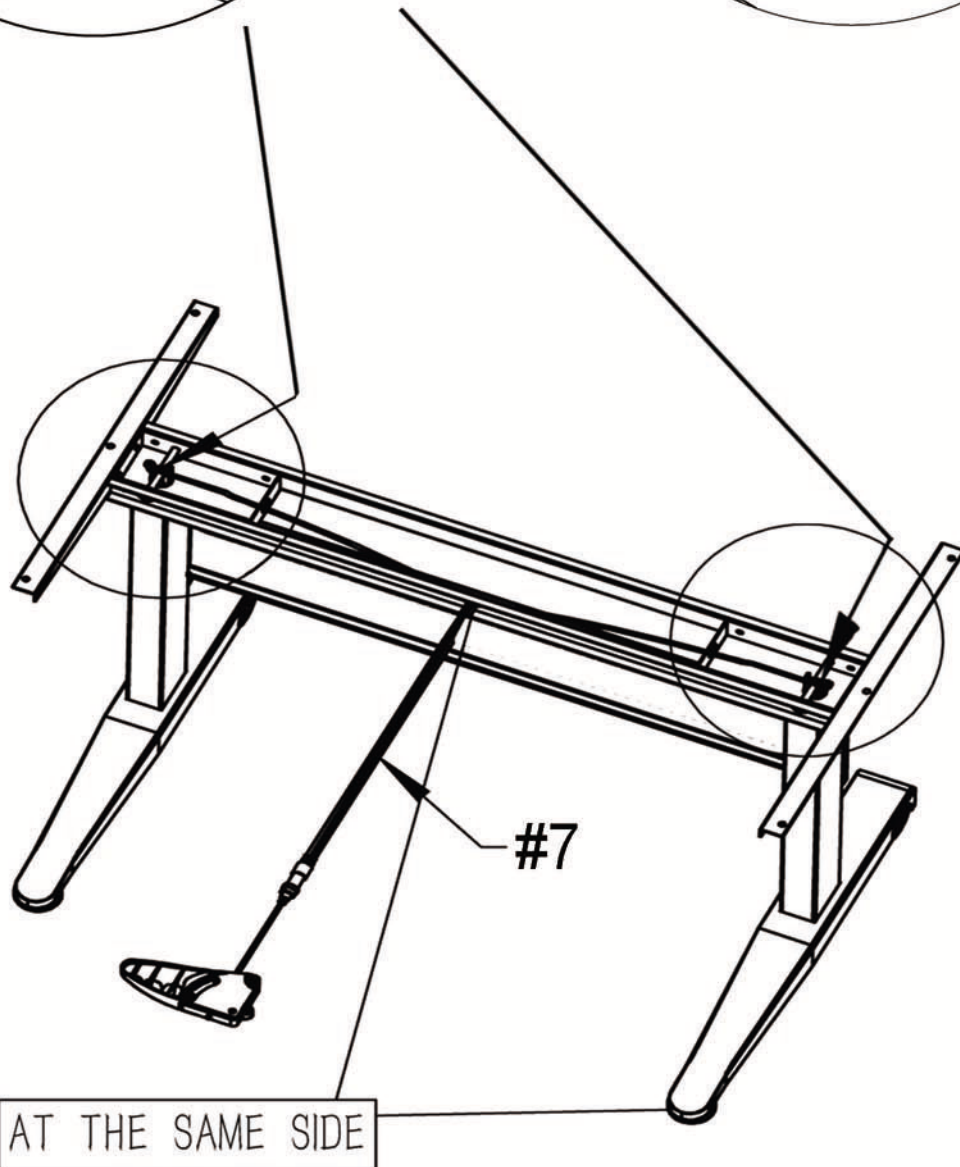
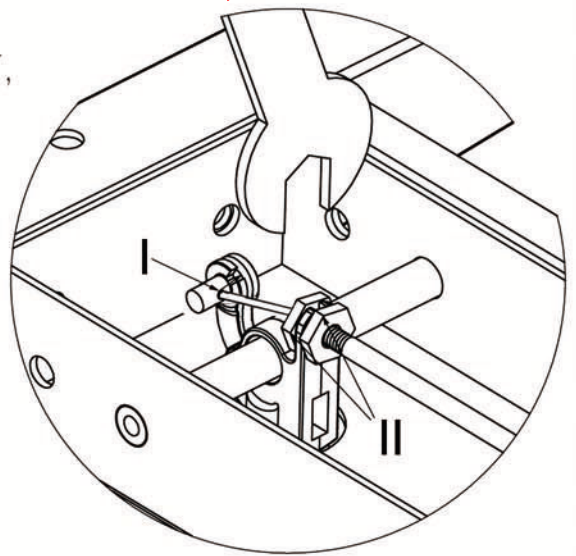




Extend button with line through the center hole of support (#5). Extend the line (#7) to each side of the lifting supports (#2,3). Make sure the line hooks on and attaches to the holding device. Secure hexagon with wrench.

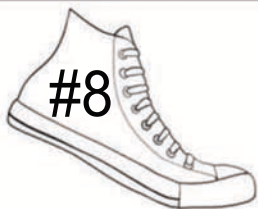
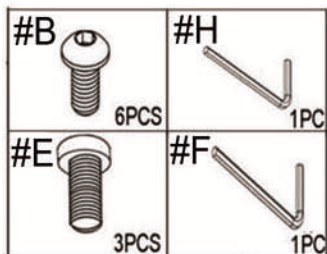
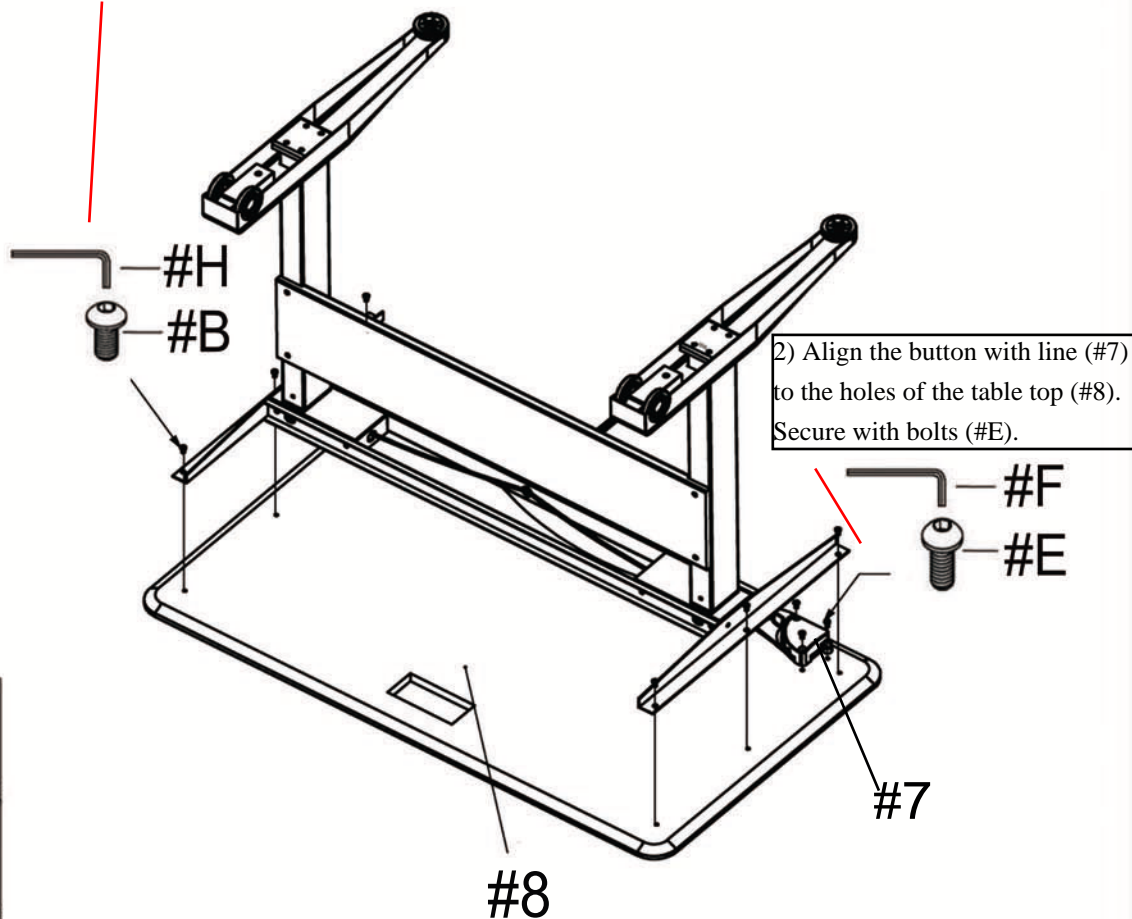


ATTENTION:
ASSEMBLY I FIRST,
THEN LOCK II

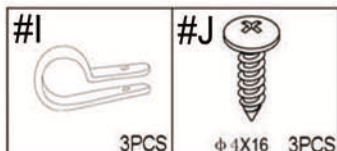
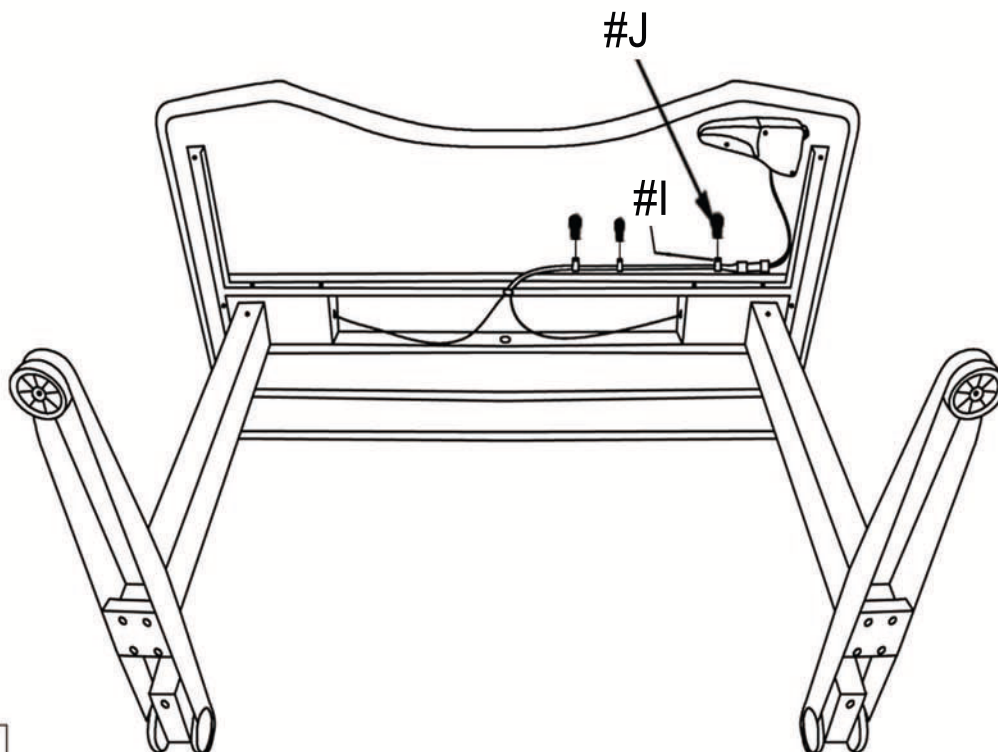


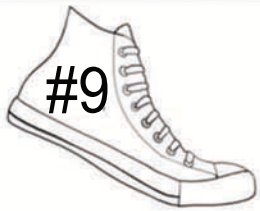


1) Align the base of table to the holes of the table top (#8), then secure with bolts (#B).

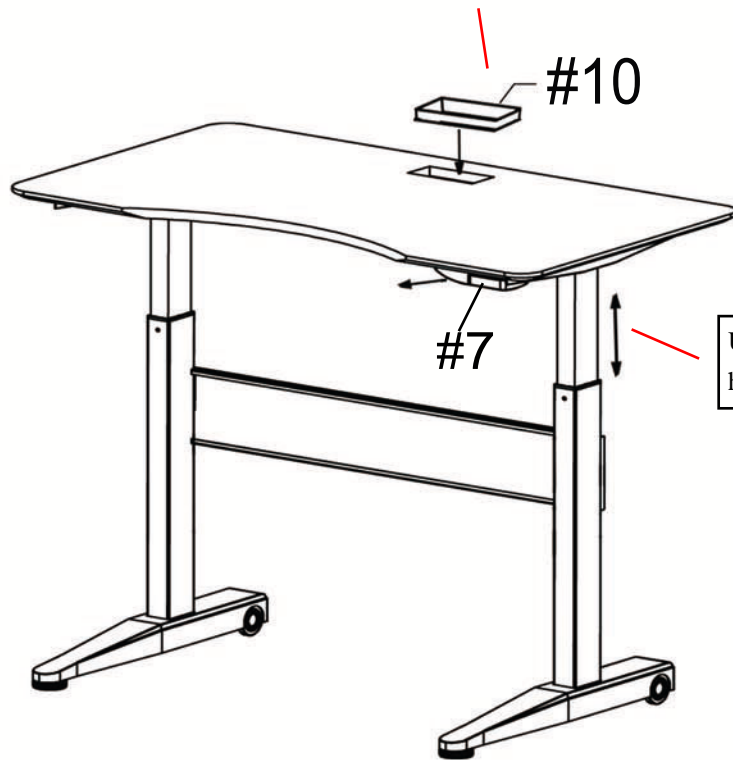


Attach plastic circles (#I) to the cords on the bottom of the table. Secure with screws (#J).

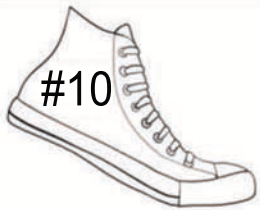




Place table cap (#10).



Use button (#7) to adjust height of table.



ASSEMBLY IS COMPLETED