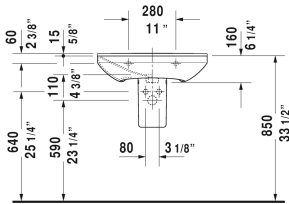
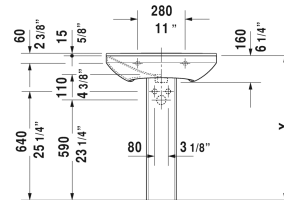
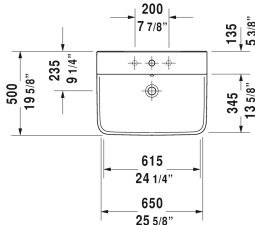


P3 Comforts Washbasin # 2331650000 / 2331650030

| < 25 5/8" Inch > |



Washbasin	Dimension	Weight	Order number
with overflow, with faucet deck, overflow clip Chrome included, underside fully glazed, hardware included, wall-mounted, cUPC listed, 25 5/8" Inch			
Colors			
00 White			
Variant			
●	25 5/8" x 19 5/8" Inch	39.7 lb	2331650000
●●●	25 5/8" x 19 5/8" Inch	39.7 lb	2331650030
Infobox			
Washbasin is not ADA compliant in combination with pedestal, siphon cover or metal console			
Sanitary ceramics with the special WonderGliss surface finish will remain clean and attractive-looking for a long time to come. When ordering WonderGliss please add a "1" as eleventh digit to the model number.			
Suitable products			
Siphon cover for # 233155, 233160, 233165, 233265, 233285, 233210, 233212, 233385, 233310, 233312, 233485, 233410, 233412, 6 3/4" x 11 3/4" Inch	6 3/4" x 11 3/4" Inch		085837
Pedestal for # 233155, 233160, 233165, 233265, 233285, 233210, 233212, 233385, 233310, 233312, 233485, 233410, 233412, 6 7/8" x 8 1/4" Inch	6 7/8" x 8 1/4" Inch		085836

All drawings contain the necessary measurements which are subject to standard tolerances. They are stated in inch & mm and are non-binding. Exact measurements, in particular for customized installation scenarios, can only be taken from the finished ceramic piece.