

scale 1:1

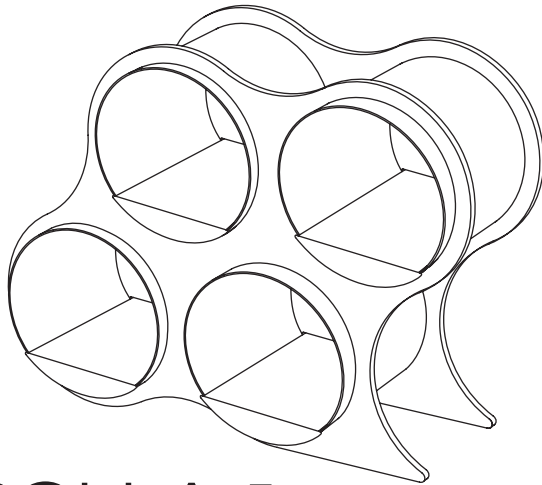
Shelves assembled with a pop of your fingers.

Configure space with color and geometric form. Bolla Pop Shelving is both a storage system and a room divider. Great selection of colors available to suit any environment. Shelves done differently. Bolla Pop shelving is an amazing combination of geometry and physics. Inner panels coil in and the natural compressive force holds the shelving system together without a single tool. Bolla packs flat for shipping, very light weight and it can be assembled in minutes.

Patent # 70352-00002

Designer: David Winston

Made in USA



BOLLA4
36" height

WARNING:

-DO NOT CRAWL, STAND, OR SIT ON METAL SHELVING.

Cleaning and Care Instructions:

Clean your BOLLACore at least once every six months with a rag that has been dampened with soap and lukewarm water. Do not scrub, but use gentle, repetitive pressure to remove any built-up grime and soot. Then rinse off with a rag dampened with clear, clean water. Do not spray it down, but rather wipe it off with the rag. You may need to do this several times to get all the soap off. Dry BOLLA with a clean rag.

© 2009 Scale 1:1. All Rights Reserved.

www.scale1to1.com

ASSEMBLY INSTRUCTIONS:

Assemble the item on a soft, non-abrasive surface, such as carpet or cardboard to avoid damaging the item. Seek assistance to assemble your Bolla Pop Shelf.

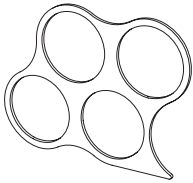
The assembly method of the Bolla shelving collection is the same for all models: Bolla 8, Bolla 6, Bolla 4 and Bolla 2. The model shown in the instruction booklet may vary from the unit purchased.

About the glass:

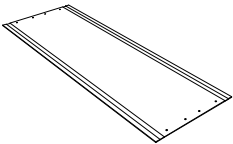
The glass top suits all Bolla models as an additional top shelf. The glass top is available for purchase as an accessory, sold separately. Please refer to your retailer for ordering. For assembly instructions, please see the assembly instructions attached to the glass top.

NO TOOLS REQUIRED:

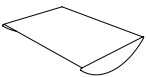
PARTS INCLUDED:



X2 FRAME



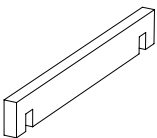
X4 STYRENE SHEETS
(COIL TO CREATE TUBE)



X4 METAL SHELF



X16 RIVETS
(4 PER TUBE)

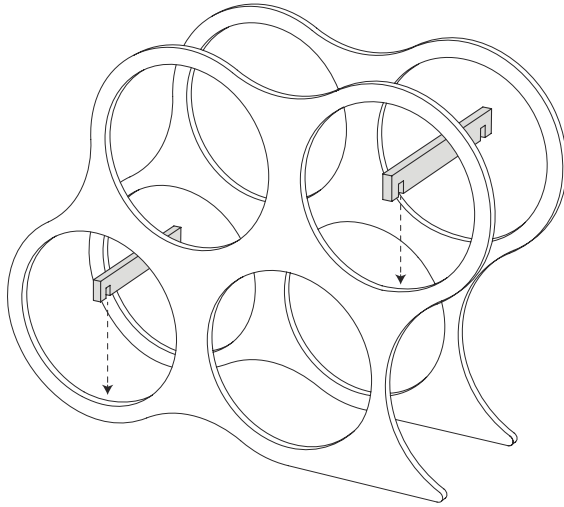


X2 3/4" ASSEMBLY BRACE

scale 1:1

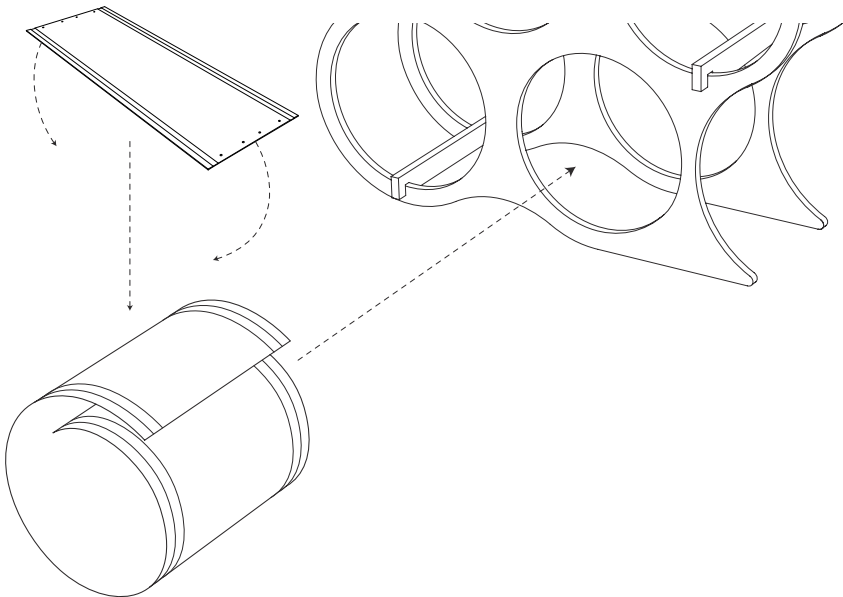
Step 1.

Insert temporary wood bracing as shown. Location of each brace may vary. Remove braces after completing step 2.



Step 2.

Coil and insert the first plastic tube. Note: Make sure the slotted grooves are facing outward. Once coiled, align the slots of the coiled sheet with the two frames. Tip: while inserting, be sure to overlap ends at least 8 inches before inserting the tube.



BOLLA

POP Shelving

Step 3a.

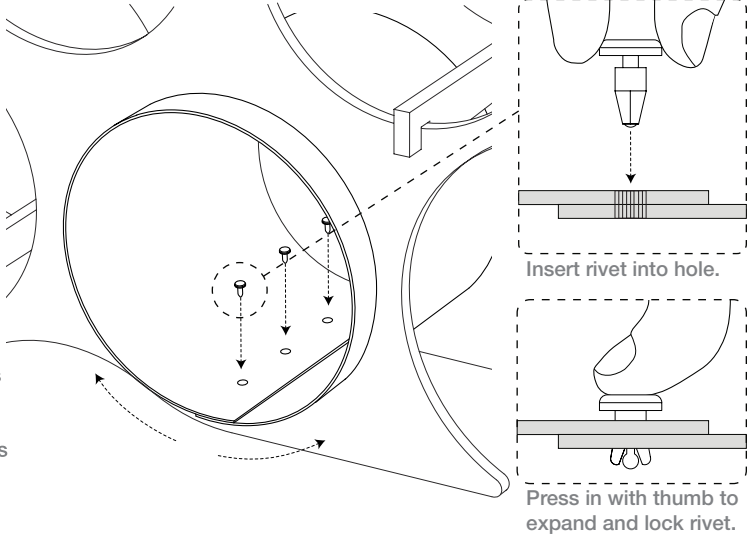
Slots must be aligned with both frames, carefully allow the coiled tube to expand into the frame. Assure that both frames are held by the slots of the plastic tube.

Step 3b.

Align the holes at both ends of the tube by expanding tube inside the frame. Insert the black plastic 'push-rivets' through the holes to fasten both ends together.

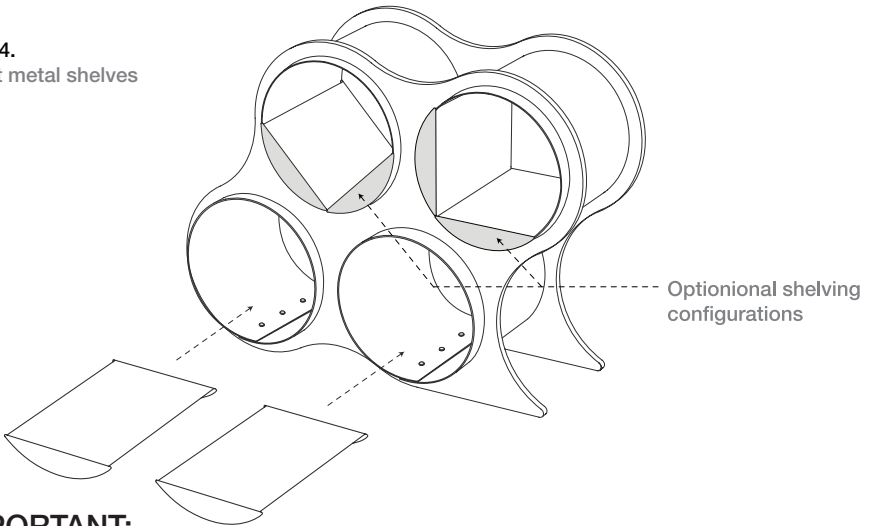
Tip for step 3:

Insert the rivets into the two center holes first, and then insert the two outer rivets. Insert rivet and press to lock.



Step 4.

Insert metal shelves



IMPORTANT:

Refer to your retailer for further details of your SCALE 1:1 product purchase policies. Return policy is strictly under the retailer discretion. SCALE 1:1 is exempt of responsibility or accepting product returns direct from a consumer when the product was not purchased direct from SCALE 1:1's inventory.