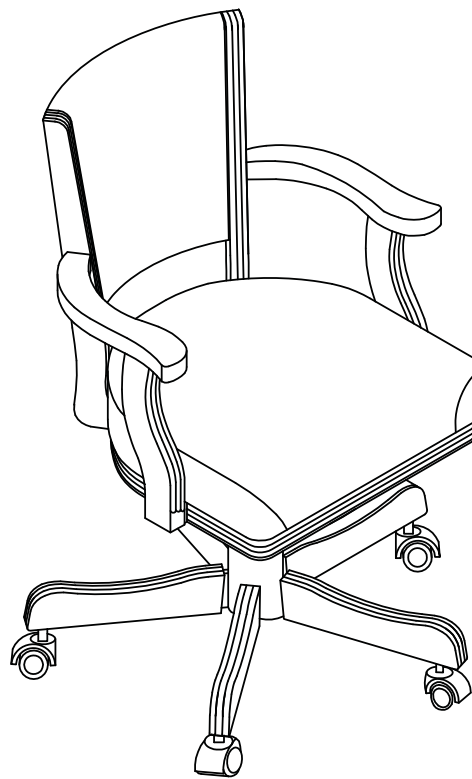


Assembly Instructions



ASSEMBLY RATING

The Assembly Rating is a 5-point system that shows the degree of effort needed in assembling a specific product (with 1 being easy and 5 being difficult). For some products, two persons are recommended.

EASY



DIFFICULT

Tools Required For Assembly:

Wrench

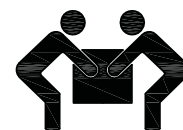


(Included)

Phillips Screwdriver



(Not Included)

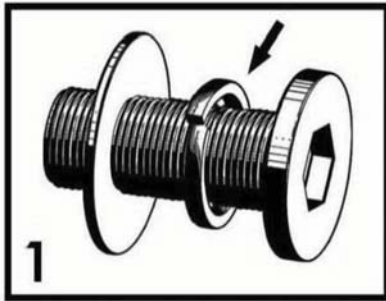


2 PERSONS RECOMMENDED

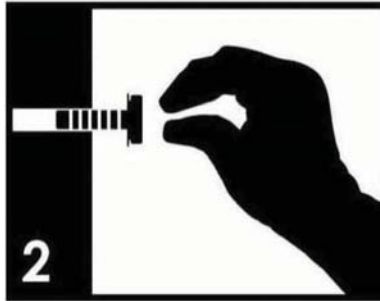
ASSEMBLY & CARE ADVICE

FOR YOUR FURNITURE TO LAST, CORRECT ASSEMBLY AND PROPER MAINTENANCE ARE NECESSARY. PLEASE FOLLOW THE INFORMATION PROVIDED BELOW TO FULLY ENJOY YOUR FURNITURE.

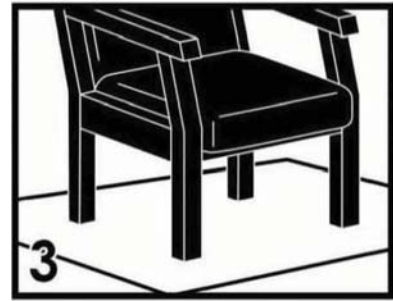
BASIC ASSEMBLY TECHNIQUES



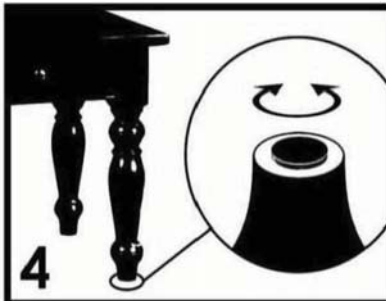
When lock or spring washer is used in an assembly, please make sure the lock or spring washer is placed between the larger flat washer and the head of the screw or bolt.



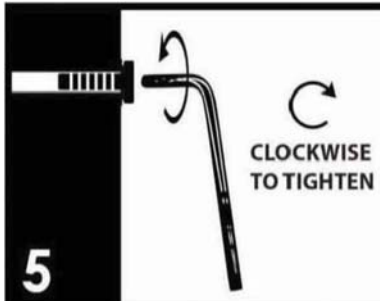
Position each part correctly and insert screws or bolts into their respective holes by hand tighten or using the proper hand tool. Only tighten when step is completed or when instructed to do so.



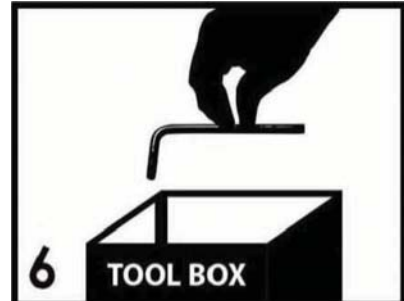
Use cardboard or carpet area when assembling furniture to prevent scratches. Make sure the furniture rests on a flat and level surface with each leg evenly touching the floor.



Some furniture comes with height adjustment knobs underneath each leg. To lower or to raise each leg, you need to turn clockwise or counterclockwise, respectively.

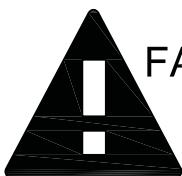


Make sure all parts are properly aligned, then use the appropriate hand tool to completely tighten the bolts or screws. Do not use power tools and do not overtighten.



Save the instructions and store the Allen wrench or any supplied tool for later maintenance. After two weeks, check and tighten any loose hardware and repeat again every six months thereafter.

IT IS THE USER'S RESPONSIBILITY TO MAINTAIN THE FURNITURE. THE HARDWARE MAY LOOSEN OVER TIME AND MAY CAUSE THE FURNITURE TO BE WOBBLY AND UNABLE TO SUPPORT ITS INTENDED WEIGHT CAPACITY. THIS MAY LEAD TO COLLAPSE AND MAY CAUSE SERIOUS INJURY.



FAILURE TO FOLLOW THE GUIDELINES ABOVE MAY RESULT IN INJURY AND/OR PROPERTY DAMAGE.



Before you begin, please read Page 2 of "Assembly and Care Advice".

And remember, do not tighten until each step is completed or instructed.

Parts List



#1 x 1pc
Back Cushion



#2 x 1pc
Seat



#3 x 1pc
Right Back Support Bar



#4 x 1pc
Left Back Support Bar



#5 x 1pc
Right Chair Arm



#6 x 1pc
Left Chair Arm



#7 x 1pc
Seat Plate



#8 x 1pc
Gas Lift Cylinder



#9 x 1pc
Cylinder Cover



#10 x 1pc
5-Star Base

Hardware List



#A x 4pcs
Bolt Ø1/4"X40mm



#B x 4pcs
Bolt Ø1/4"X25mm



#C x 4pcs
Washer Ø1/4"X12mm



#D x 12pcs
Washer Ø1/4"X16mm



#E x 8pcs
Hex Nut



#F x 4pcs
Wood Plugs



#G x 5pcs
Caster



#H x 1pc
Allen Wrench



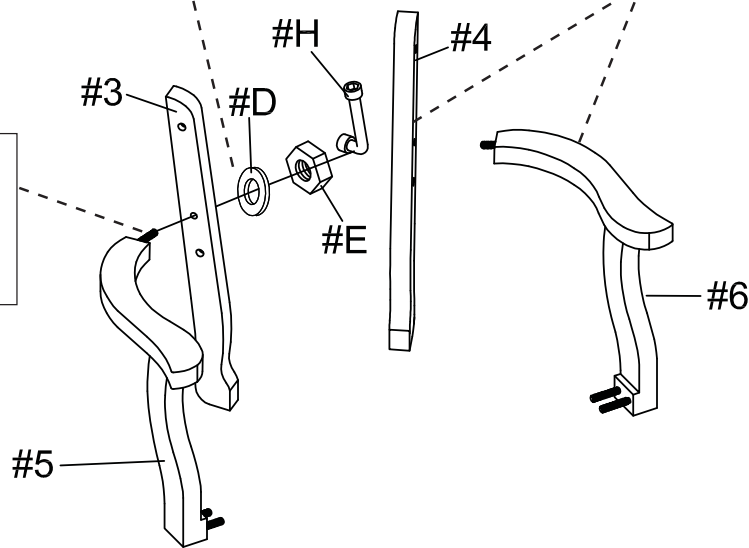
#1

#D x 2pcs
#E x 2pcs

1. Insert the threaded end of the right chair arm (#5) into the right back support bar (#3).

2. Apply a washer (#D) then a hex nut (#E) onto the threaded end. Secure using the Allen wrench (#H).

3. Repeat the process with the left chair arm (#6) and left back support bar (#4).

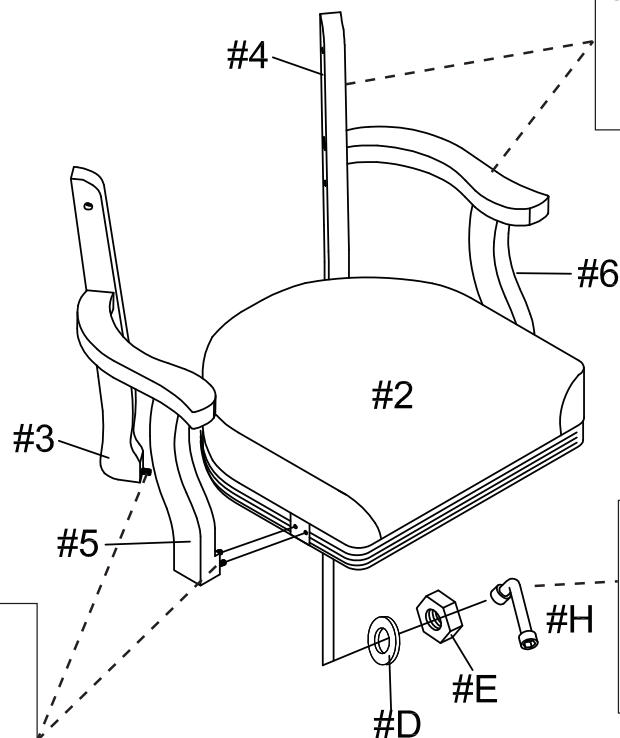


#2

#D x 6pcs
#E x 6pcs

1. Insert the threaded ends along the bottom of the right back support bar (#3) and the right chair arm (#5) into the seat (#2).

3. Repeat the process with the left chair arm (#6) and left back support bar (#4).



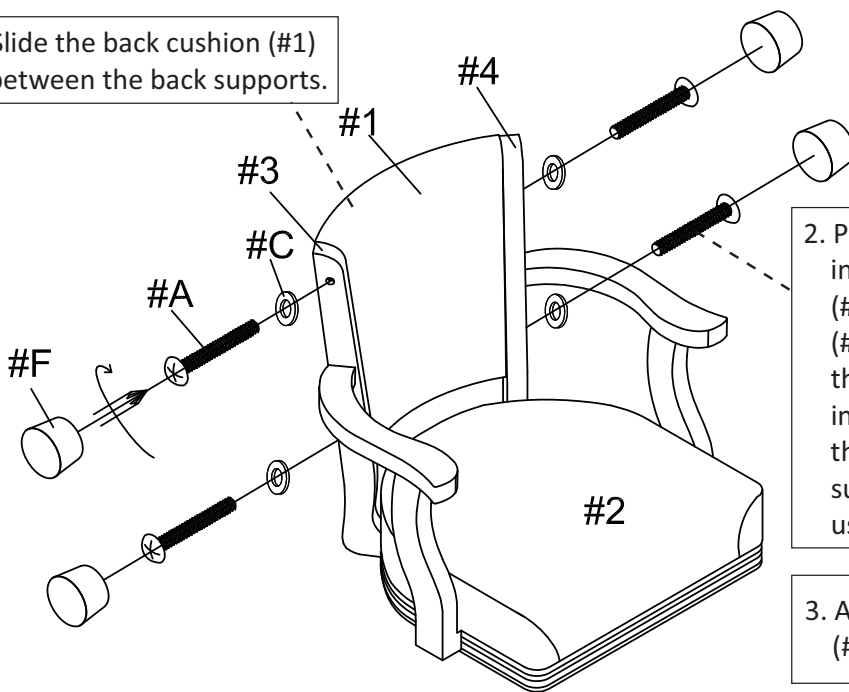
2. Apply a washer (#D) then a hex nut (#E) onto the threaded ends. Secure using the Allen wrench (#H).



#3

1. Slide the back cushion (#1) between the back supports.

#A x 4pcs
#C x 4pcs
#F x 4pcs



2. Prepare 4 bolts by inserting a washer (#C) onto the bolts (#A). Then insert the bolt assemblies into the holes along the sides of the back supports. Secure using a screwdriver.

3. Apply a wood plug (#F) into each hole.



#4

#B x 4pcs
#D x 4pcs

6. Prepare 4 bolts by inserting a washer (#D) onto the bolts (#B), then insert the bolts into the seat plate (#7). Secure using the Allen wrench (#H).

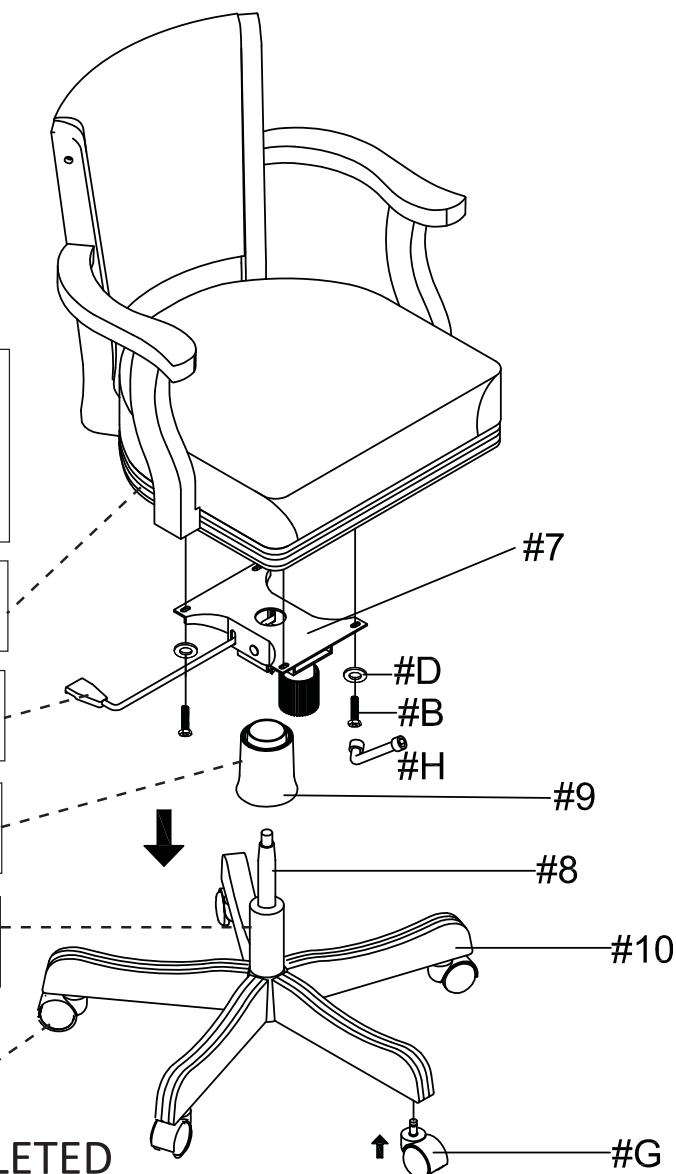
5. Place the seat (#2) onto the seat plate (#7).

4. Apply the seat plate (#7) onto the cylinder cover (#9)

3. Apply the cylinder cover (#9) onto the gas lift cylinder (#8).

2. Apply the gas lift cylinder (#8) onto the 5-star base (#10).

1. Insert a caster (#G) into each end of the 5-star base (#10).



ASSEMBLY IS COMPLETED