

Attention: Don't tighten the allen bolt before all allen bolt in place

USER'S MANUAL

Dining Chair

BEFORE YOU GET STARTED, A FEW POINTS



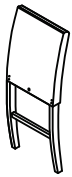
Having a friend to help makes assembly extra-easy



Mind the important safety information

★ PLEASE MAKE SURE ALL THE PARTS ARE INCLUDED.

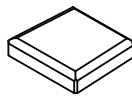
1



*2

Backrest Frame

2



*2

Seat Cushion

3



*2

Left leg

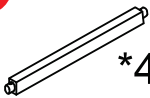
4



*2

Right leg

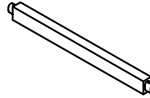
5



*4

Long Bar

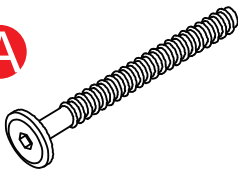
6



*2

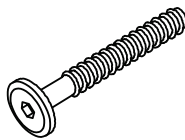
Short Bar

A



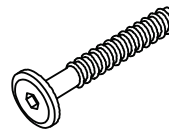
Ø1/4"x80mm
(8pcs)

B



Ø1/4"x40mm
(8pcs)

C



Ø1/4"x35mm
(2pcs)

D



Ø1/4"
(18pcs)

E



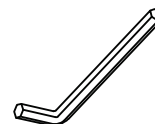
Ø1/4"
(18pcs)

F



Ø4x40mm
(16pcs)

G

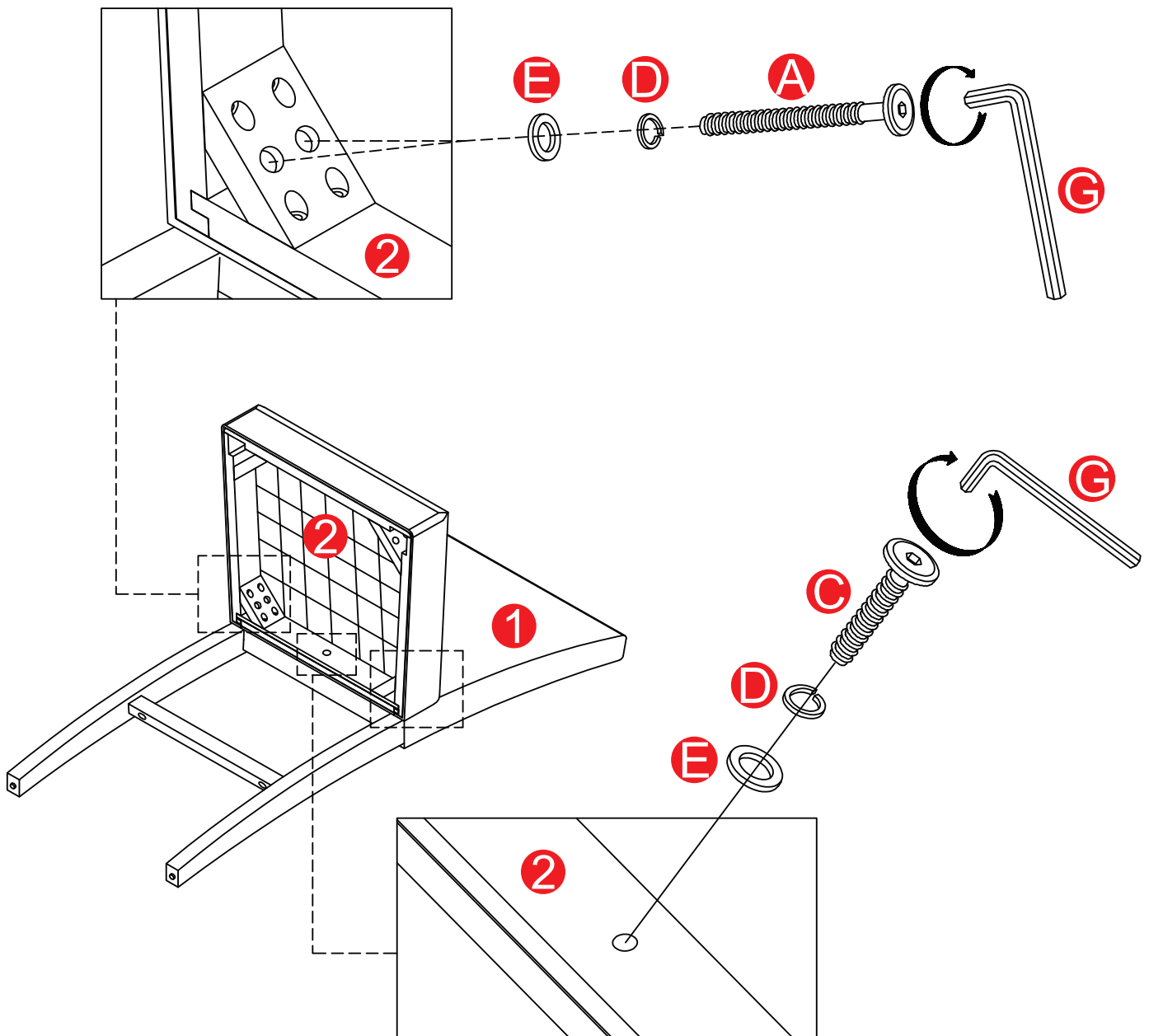


M4 Allen Key
(1pc)

ASSEMBLY INSTRUCTIONS - ATTENTION

STEP 1

Assemble the Backrest Frame (1) with the Seat Cushion (2) Using Bolts (A) & (C), Spring Washers (D) and Flat Washers (E) using Allen wrenches (G).



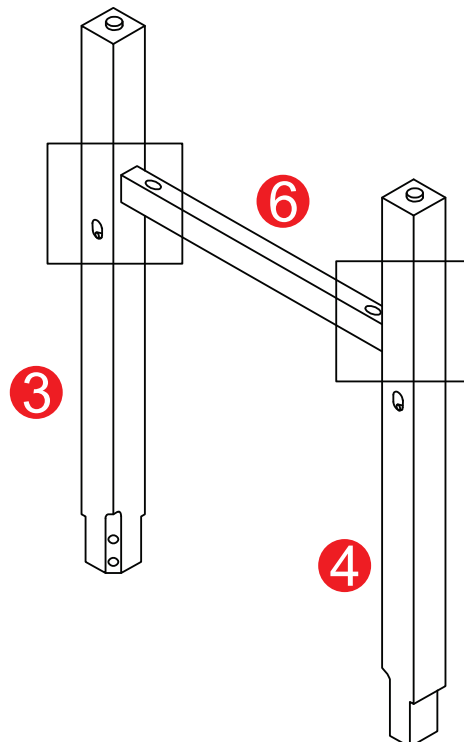
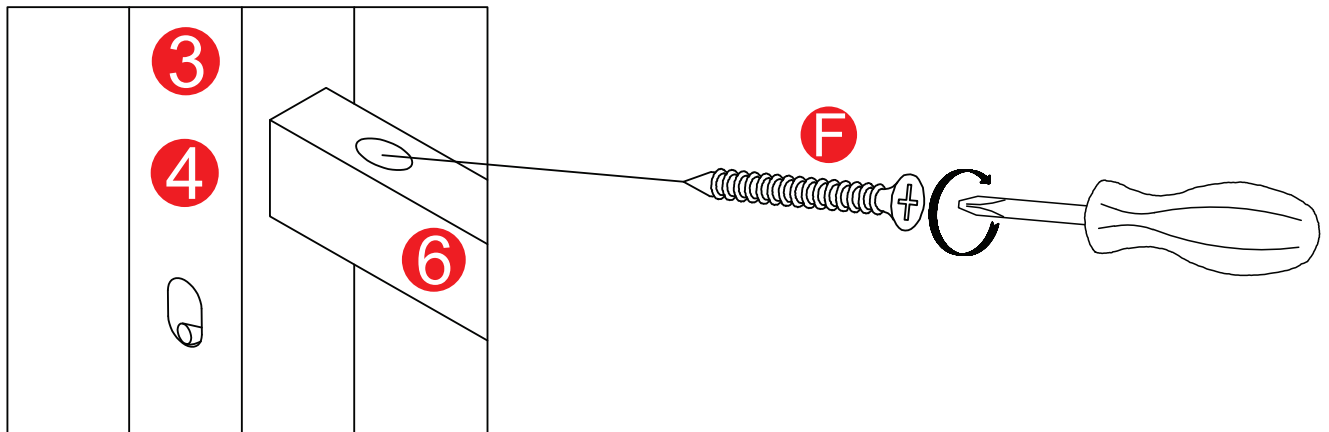
ASSEMBLY INSTRUCTIONS - ATTENTION

STEP 2

Assemble the Short Bar (6) with the Left Leg (3) & Right Leg (4), Use the Screws (F) and tighten them with the Screwdriver as shown in the figure. Do not over-tighten them, just tighten them to 50%.

Friendly notice:

If the rotating positions cannot be aligned well, gently shake the Seat legs (2) when locking the Screw, this can help avoid jamming operations and poor installation. Do not tighten the Screw completely, only 50% is sufficient.

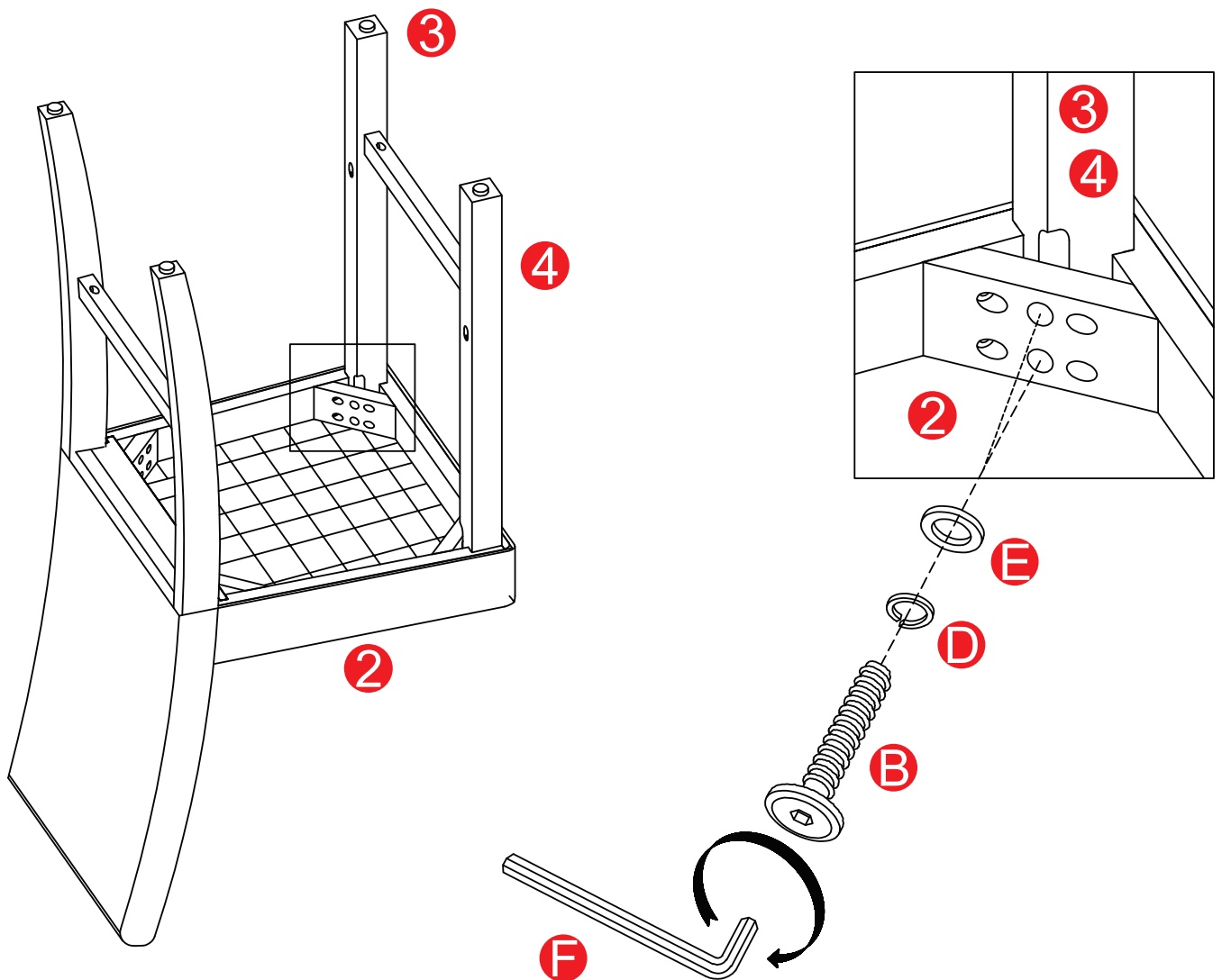


ASSEMBLY INSTRUCTIONS - ATTENTION

STEP 3

Connect the front legs frame made in Step 2, to the backrest frame made in Step 1.

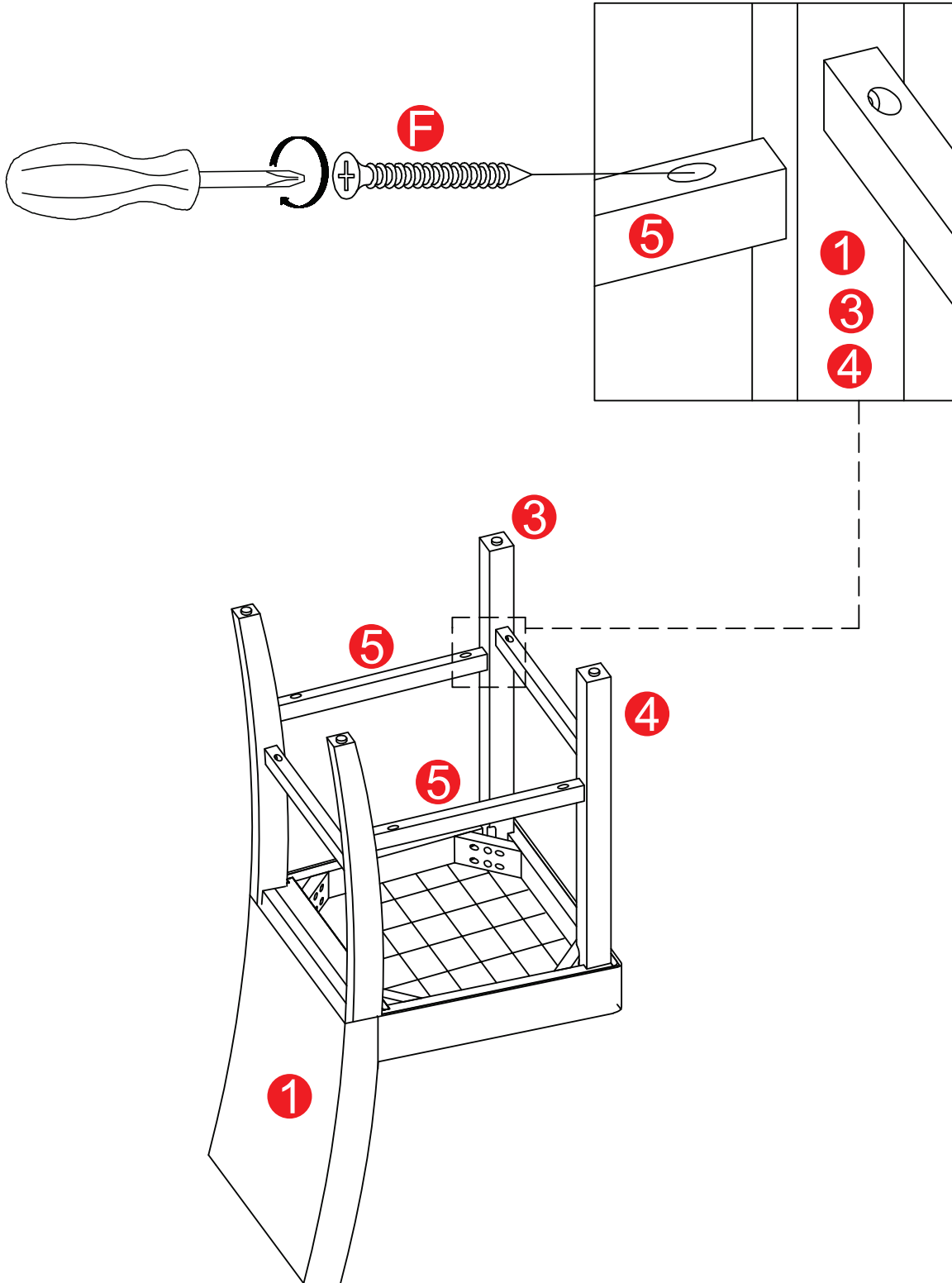
By using Bolts (B), Spring Washers (D), Flat Washers (E) and Allen wrenches (G). Do not over-tighten them, just tighten them to 50%.



ASSEMBLY INSTRUCTIONS - ATTENTION

STEP 4

Connect the Long Bar (5) to the Backrest Frame (1), Left Leg (3) & Right Leg (4). Use the Screws (F) and tighten them with a screwdriver as shown in the figure. After adjusting the balance of the entire seat, then tighten all the bolts to 100%.

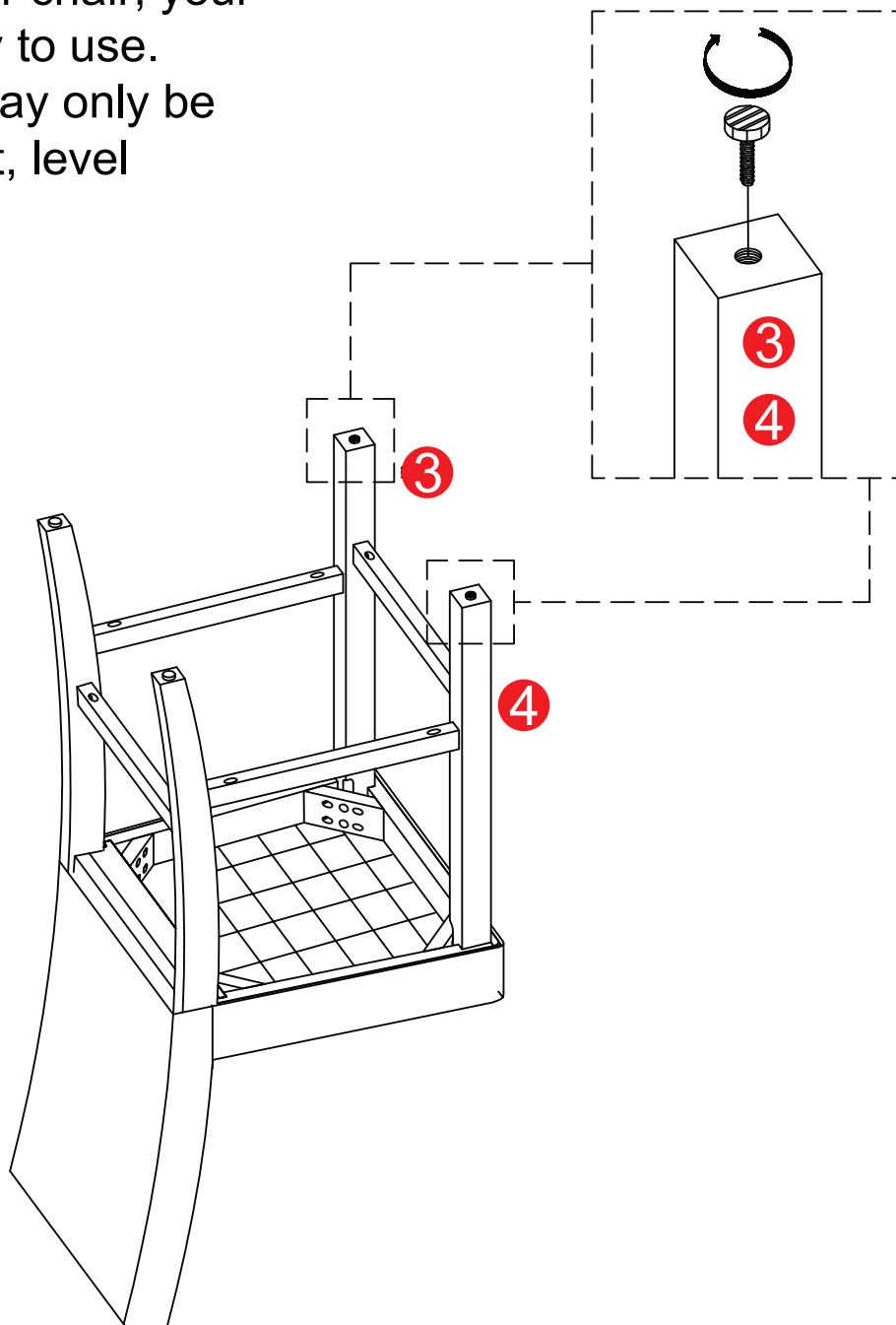


ASSEMBLY INSTRUCTIONS - ATTENTION

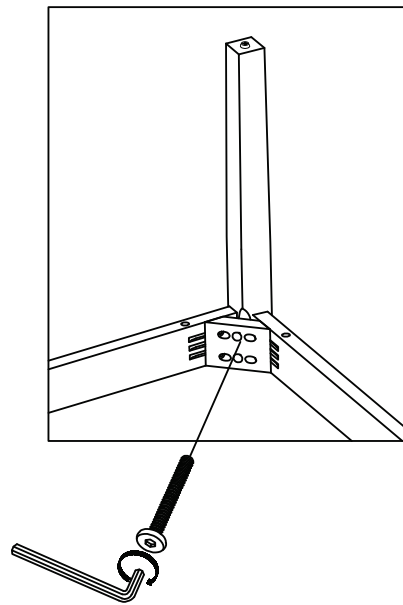
STEP 5

The foot bases (3) and (4) can be adjusted to prevent the chair from becoming unbalanced.

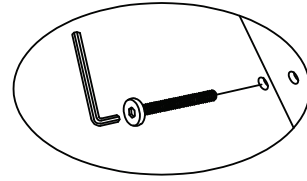
Stand up your chair, your chair is ready to use.
This board may only be used on a flat, level surface.



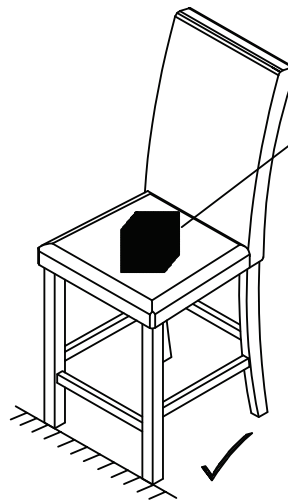
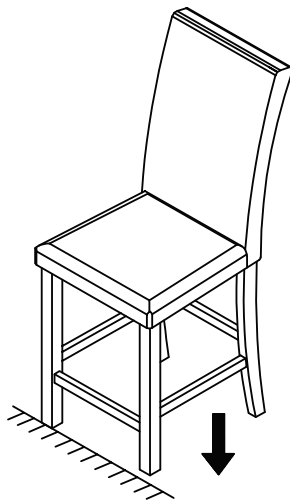
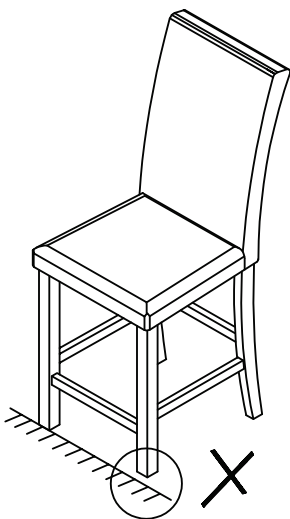
ASSEMBLY INSTRUCTIONS - ATTENTION



50%

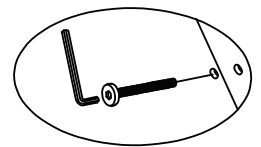


1. Partly screw in bolts, but do not fully tighten.



Apply pressure on the seat. (About 40kg)

100%



2. Place the chair on a flat surface and apply pressure on the seat. Then tighten the middle bolt on the back, then tighten bolts on the corners, using the chair.

3. If the legs are uneven, you can also adjust the levelers at the bottom of the legs to improve balance



WARNING:



Read the instructions carefully.



Please follow the assembly steps.

Weight Capacity for Seating: 250LBS

To ensure proper assembly, follow all steps and use all parts, do not use power tools. Failure to follow this warning can result in serious injury to yourself or others.

Please inspect all items before assembly, if for any reason you need to return this item, please kindly return in it's original packaging.

To avoid misalignments, leave the bolts loose and do not tighten them until all are in their respective places.

Do not tighten all bolts completely until the entire unit has been assembled and set up.

Do not overtighten or force the bolts as they could break, strip, or damage the threads of the holes.

Using the wrong size of bolts on a part could result in damage to the bolts or the part.

Lubricate all moving parts and tighten all bolts every 6 month or whenever needed.

Do not use if this product become damaged, and / or components are broken or missing.

SAFETY INFORMATION



Sit in the center of the chair, with your back to the backrest



Do not sit at the front edge of the chair



Do not stand on the chair



Do not use the chair with more than one person



Do not push the chair around when a person is sitting in it



Do not push down on the backrest when a person is reclined