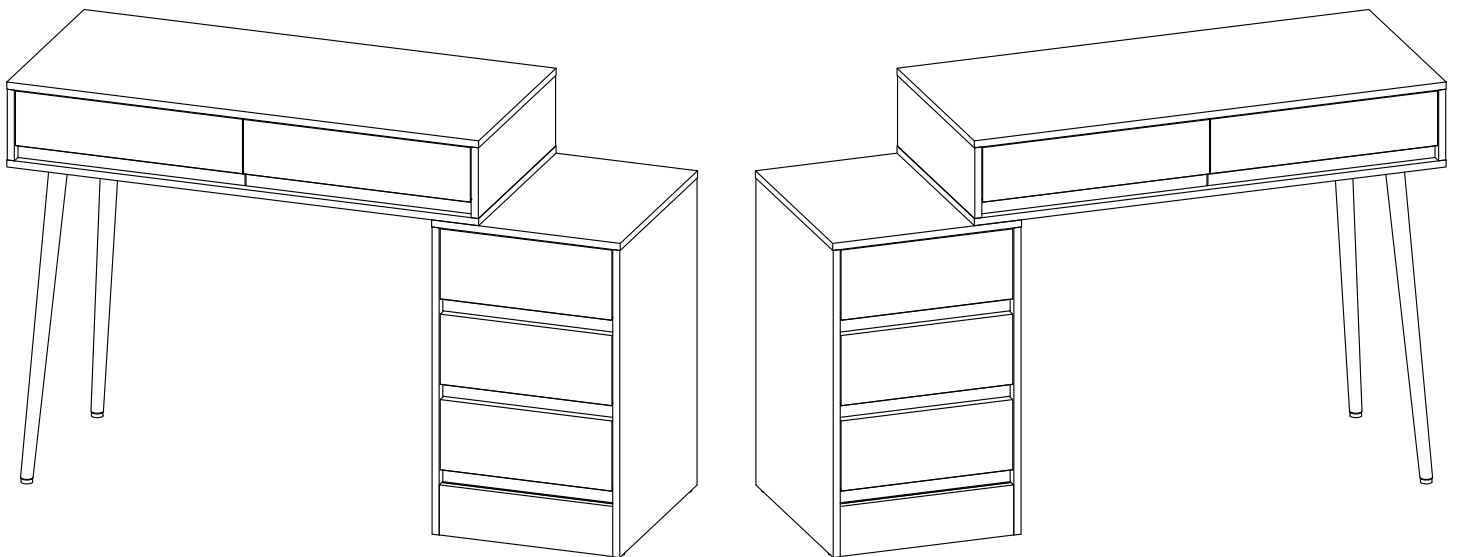


Assembly Instructions



Computer Table

Call us!

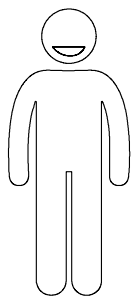
We're here to help!

If you have any issues with this product, please contact our customer service team **before returning** it.

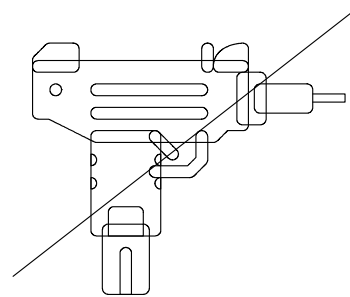
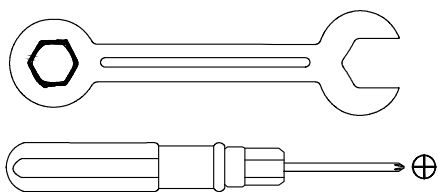
We want you to be completely satisfied with your purchase! If anything is missing, damaged, incorrect, or not what you expected, don't worry. Please keep the outer packaging and take photos of both the packaging and products, and then reach out to us. We'll take care of everything and send you a free replacement, so you can enjoy your purchase as soon as possible without any hassle.

Assembly Instructions:

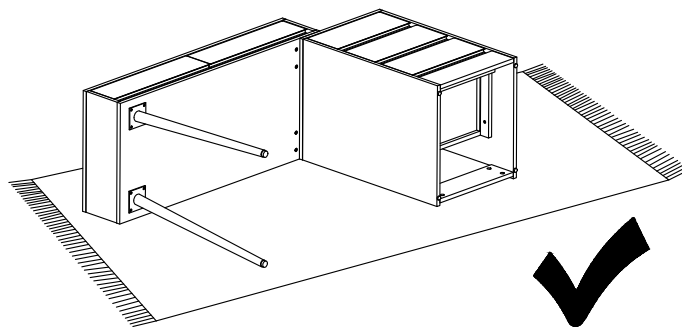
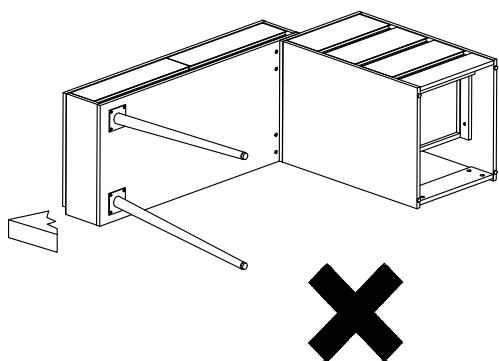
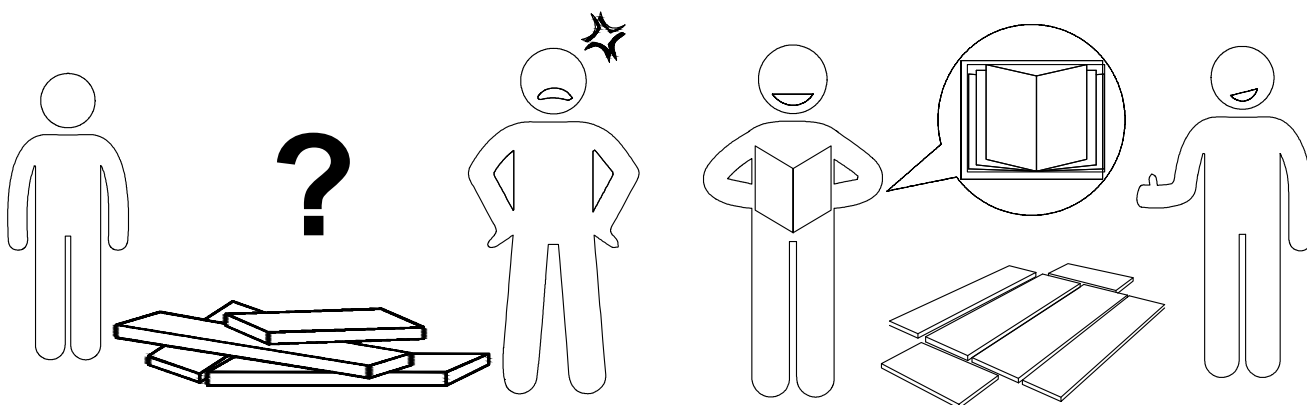
1. Carefully read these instructions and keep them for future reference.
2. Refer to the parts list for guidance and ensure that you have all the pieces before starting the assembly process, if anything is missing, damaged, incorrect, contact us **FIRSTLY BEFORE** assembling.
3. When assembling, place all parts on a soft, clean, and flat surface, such as a carpet, to prevent any scratches.
4. To avoid misalignment of the holes, Please don't full tighten the screws until you ensure all parts in place.

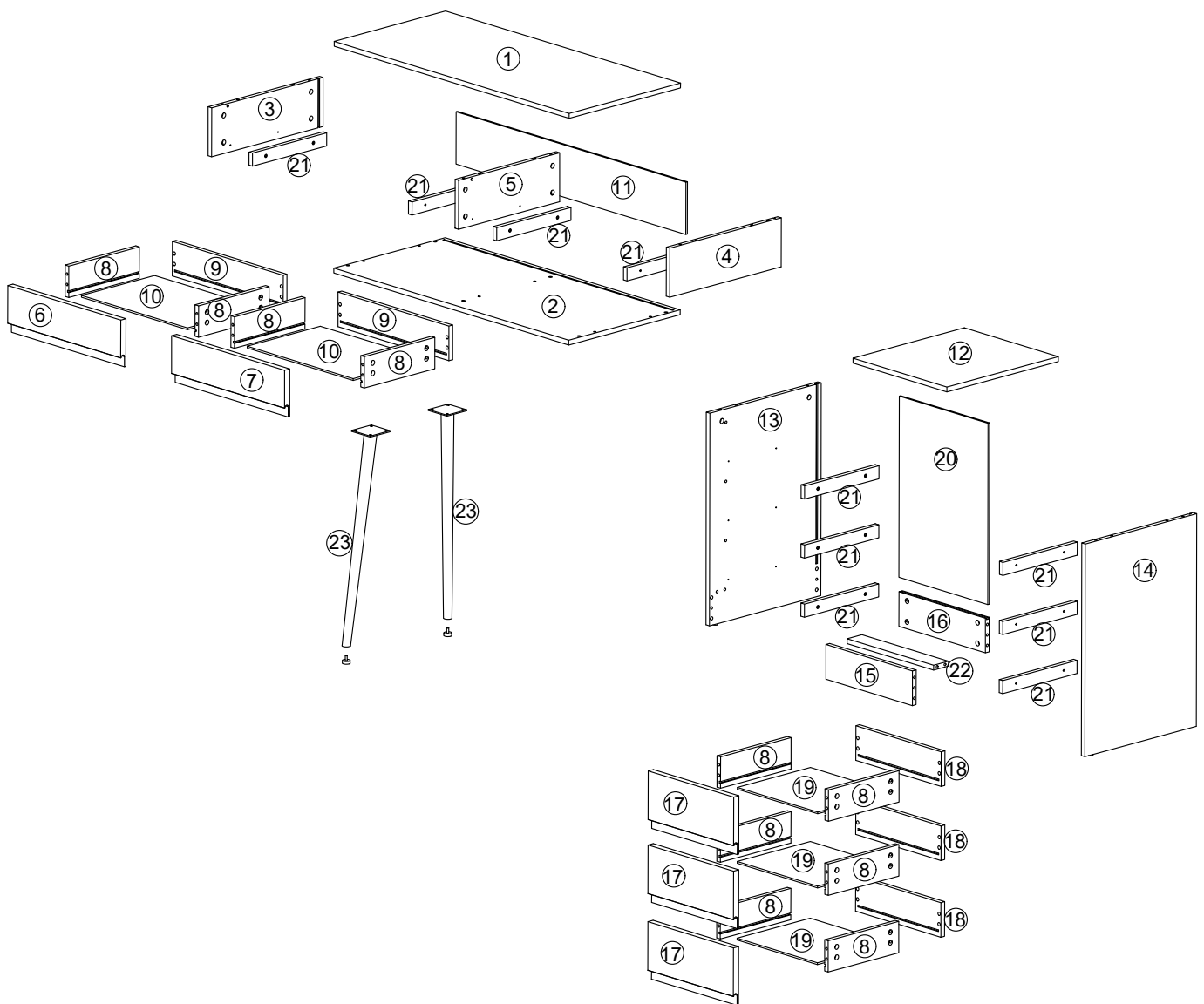


X2



When using the electric screwdriver ,
Reduce the power and torque to avoid damaging the furniture

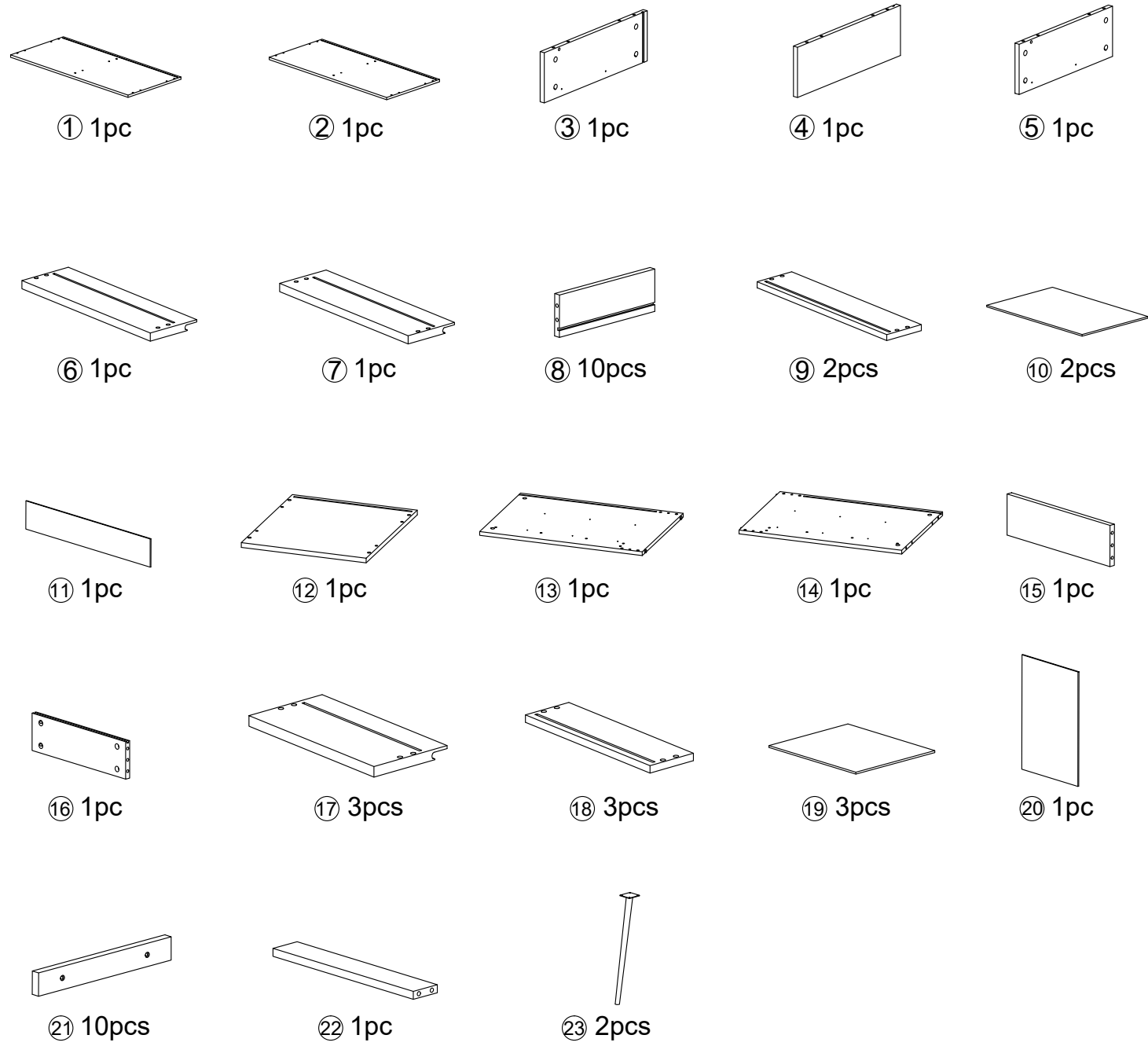




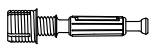


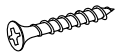


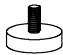
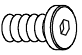
Caution



Make sure all parts are included. Most board parts are labeled or stamped on the raw edge. Contact us for free replacement if having damaged or missing parts.

Parts & Hardware List



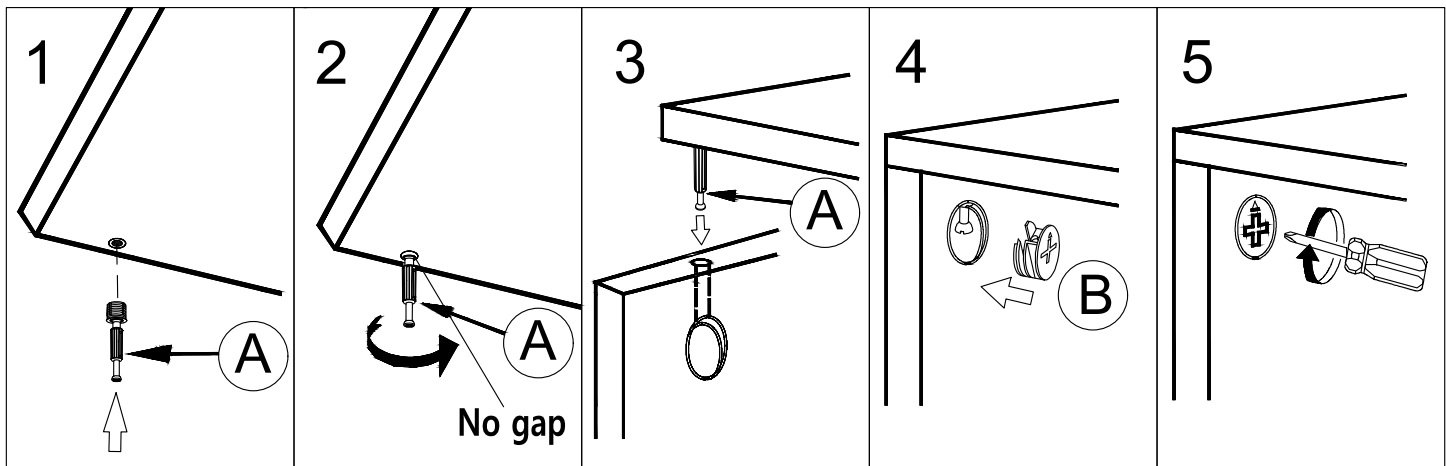
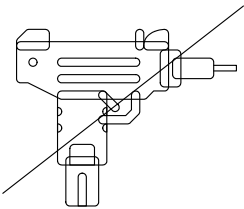
Hardware List

A	X64+1	B	X64+1	C	X34+1	D	X20+1	E	X10	F	X10+1	G	X2	H	X8+1
															
Ø6X40mm	Ø15X12mm	Ø8X30mm	4X25mm	17x16x10.5	3X18mm	M6XØ23mm	M6X12mm								

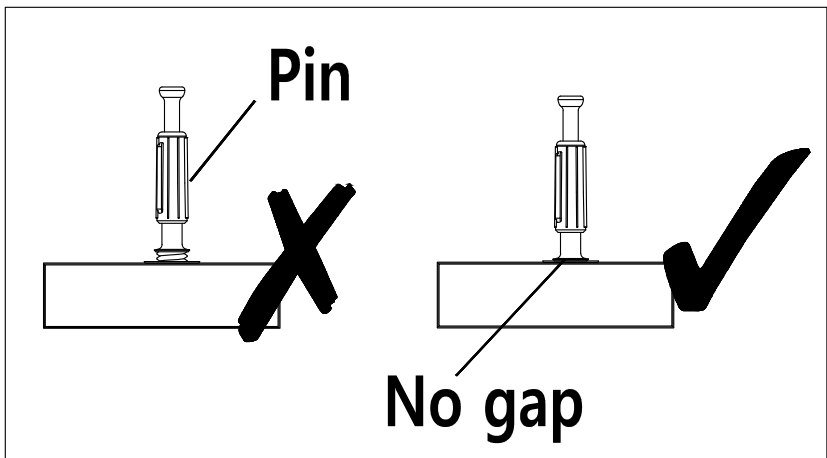
I	X1	J	X2
			
M4X55mm	Ø20X2.2mm		

Installation of Cams and Pins

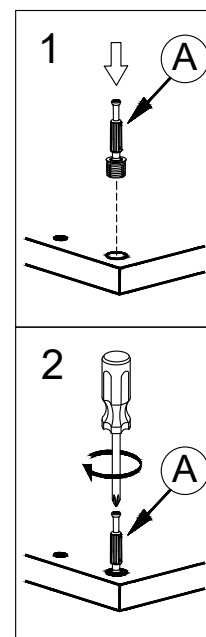
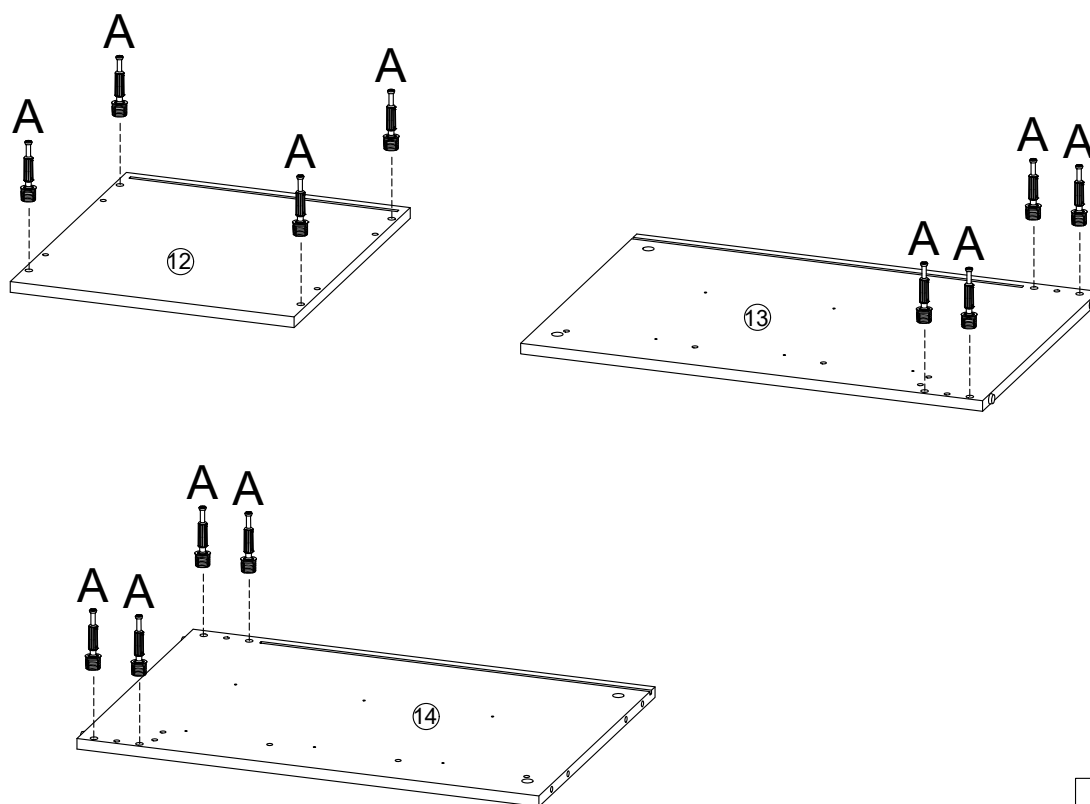
Screw the pin into the hole. To set the cams correctly, ensure that the arrow on the cam is opening to the hole of the pin it is locking. Lock the cam by turning the cam head with a screwdriver until it is tightened. Please do not use an electric screwdriver to assemble the unit.

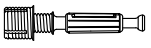


Read each step carefully before starting. It is very important that each step of instruction is performed in the correct order. If these steps are not followed in sequence, assembly difficulties will occur.

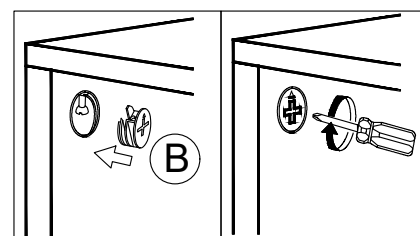
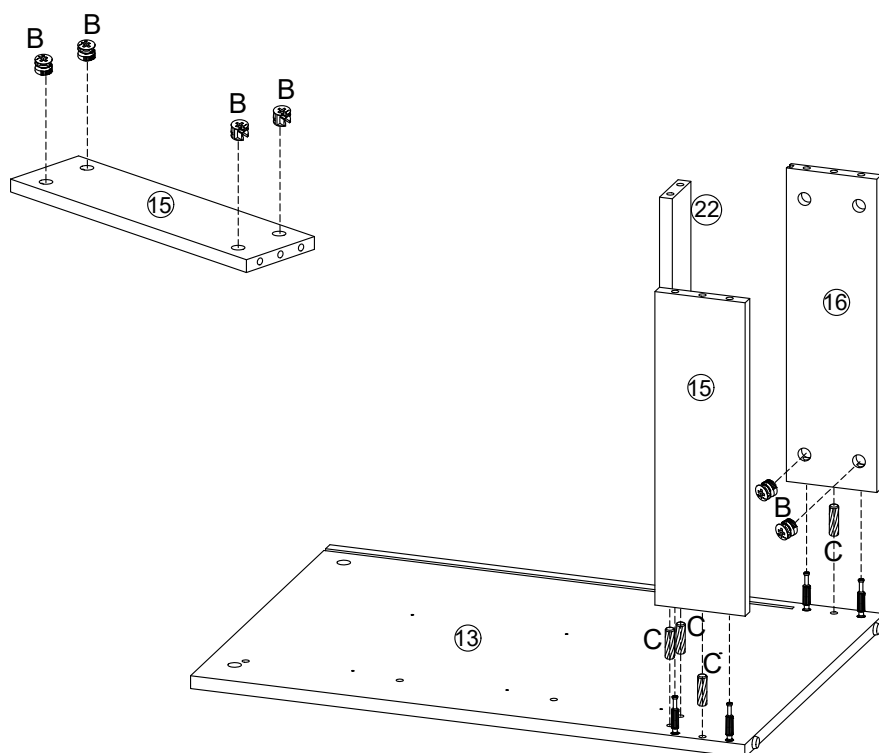




1



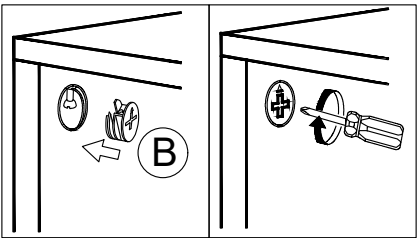
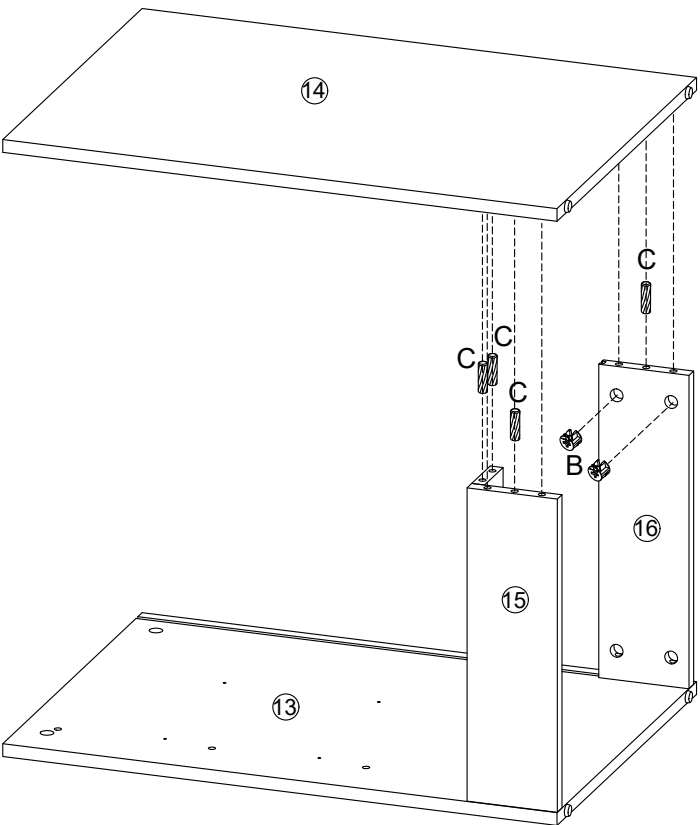
A	X12
	
Ø6X40mm	



2



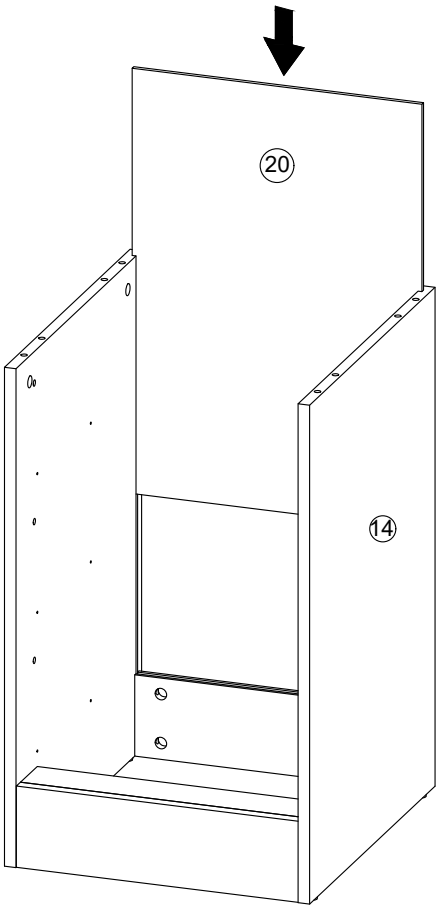
B	X6	C	X4
			
Ø15X12mm		Ø8X30mm	

3

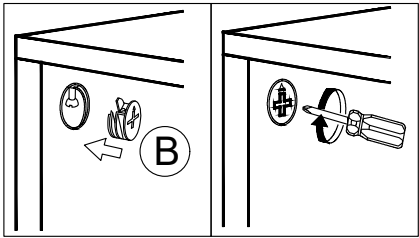
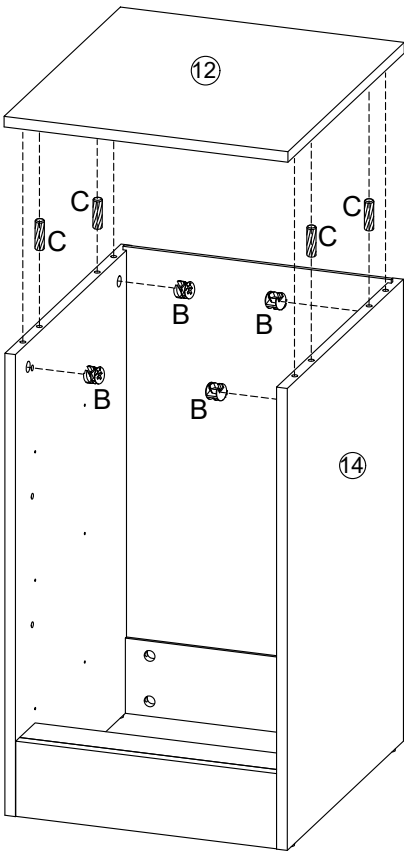




B	X2	C	X4
			
Ø15X12mm		Ø8X30mm	

4

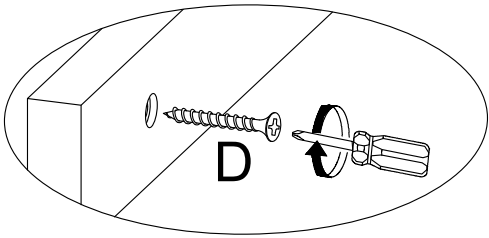
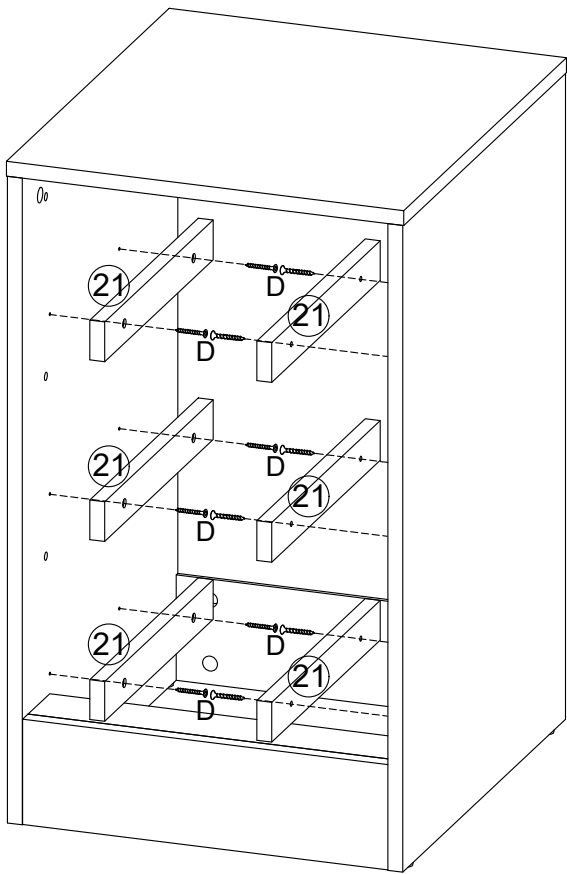


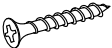
5



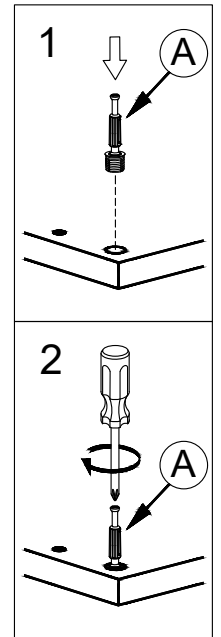
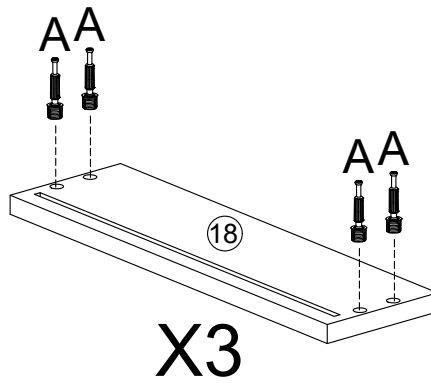
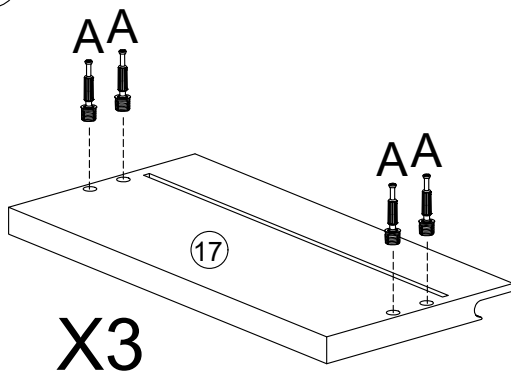
B	X4	C	X4
			
Ø15X12mm		Ø8X30mm	

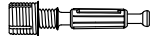
6



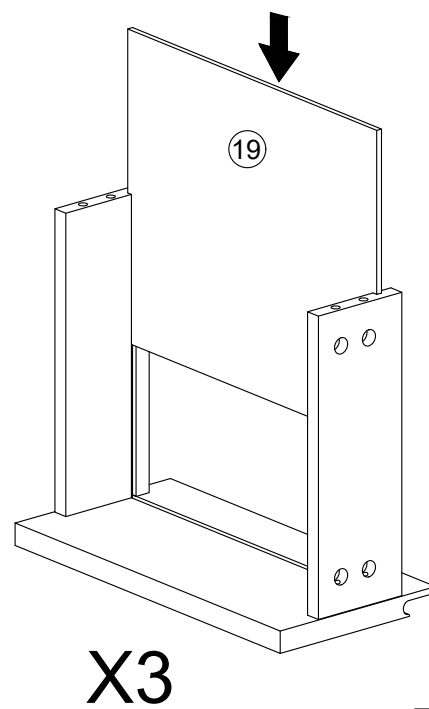
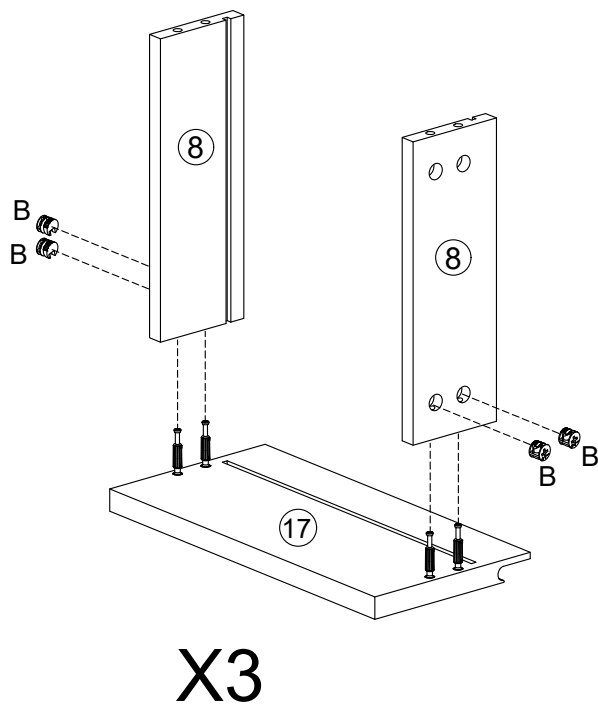
D	X12
	
4X25mm	


7



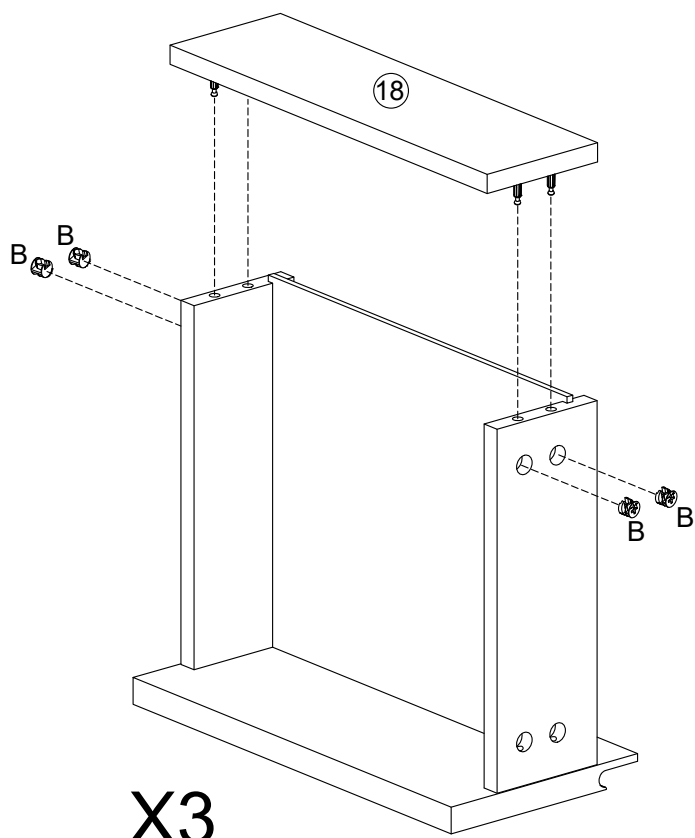
A	X24
	
Ø6X40mm	

8



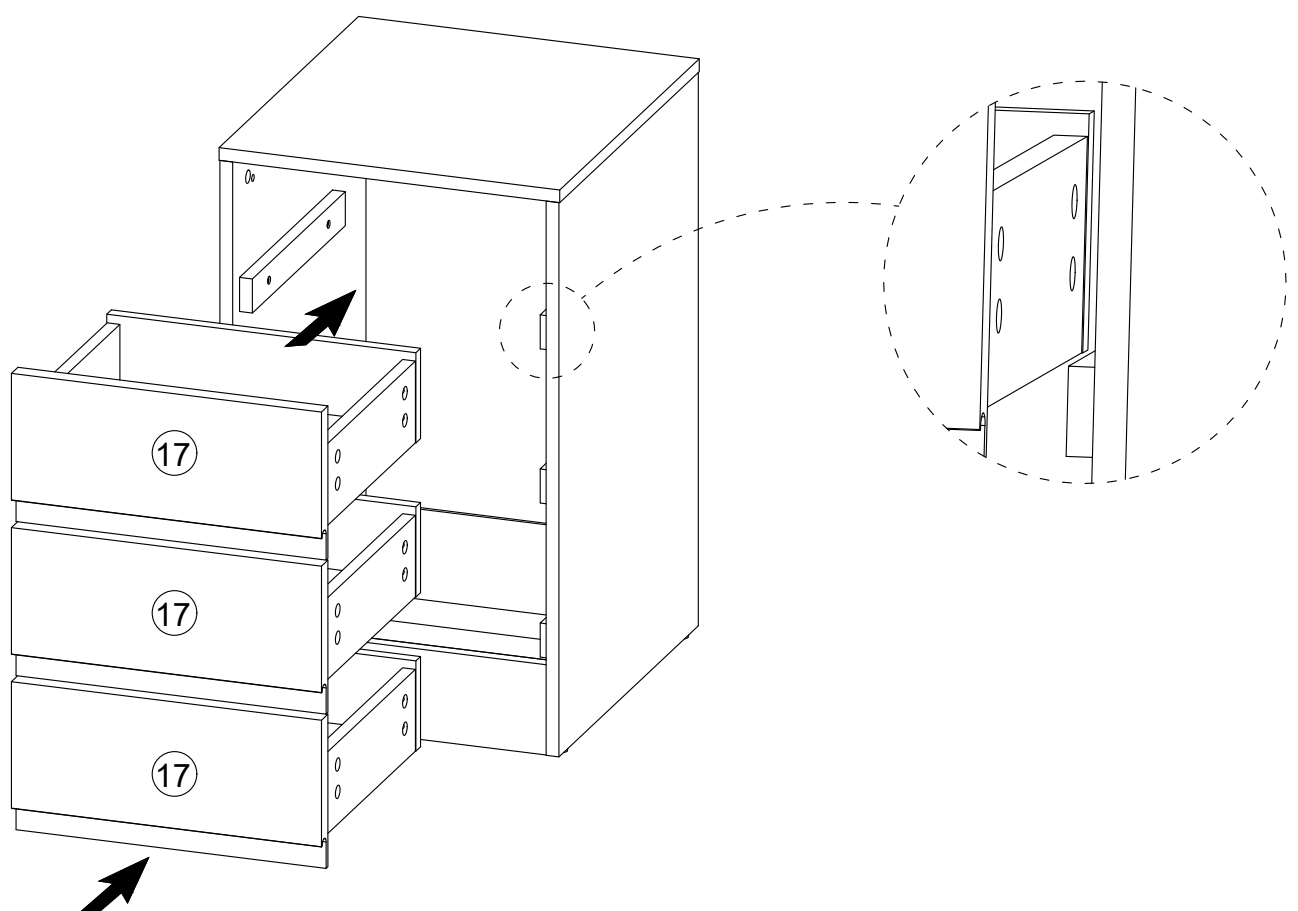
B	X12
	
Ø15X12mm	

9

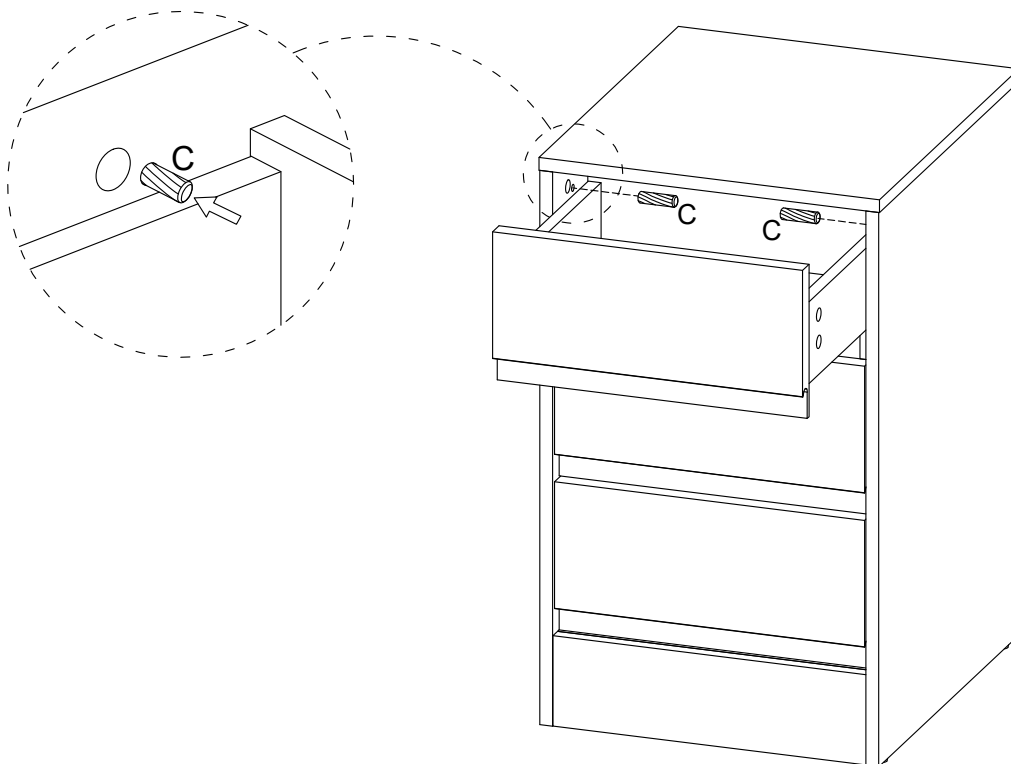



B	X12
Ø15X12mm	

10

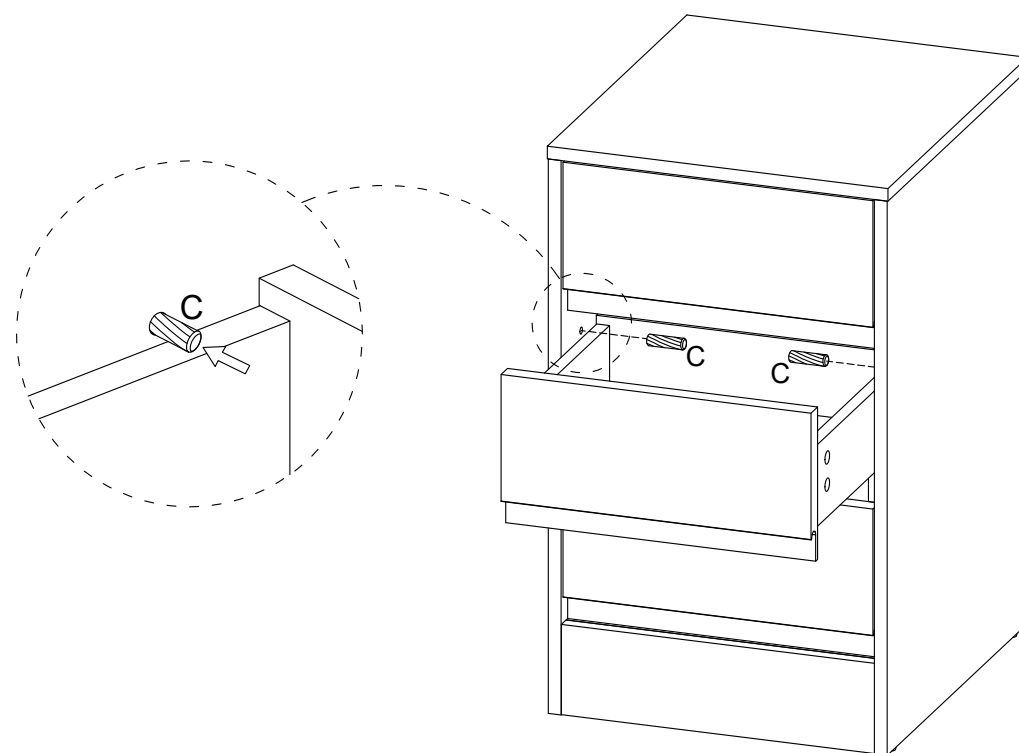



11



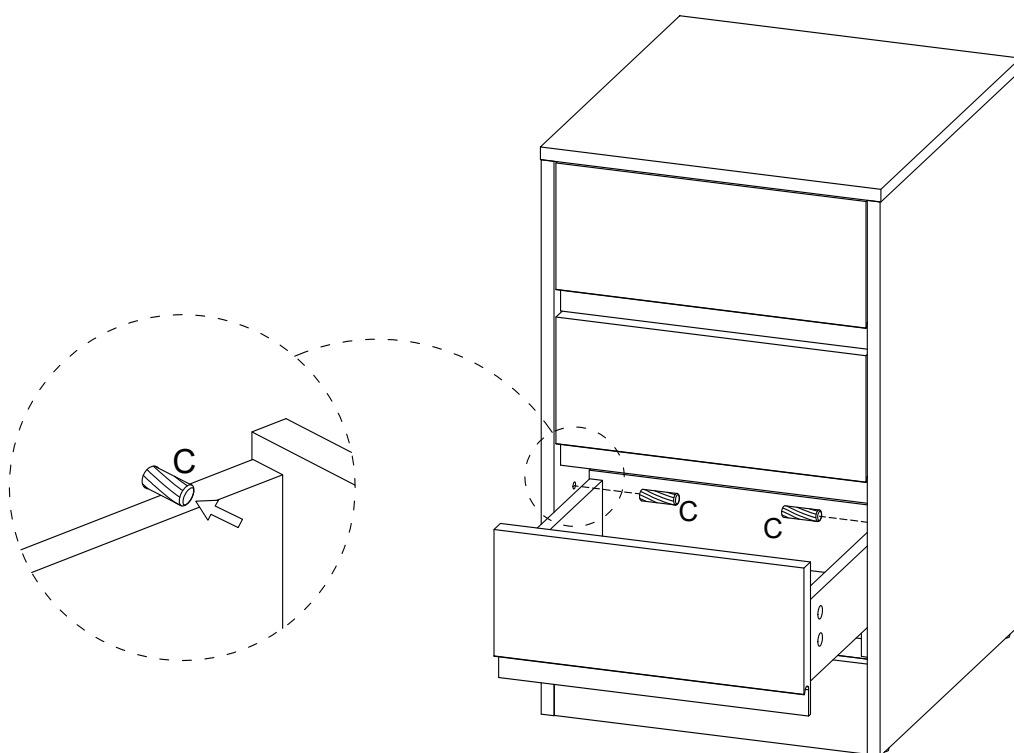
C	X2
	
Ø8X30mm	


12



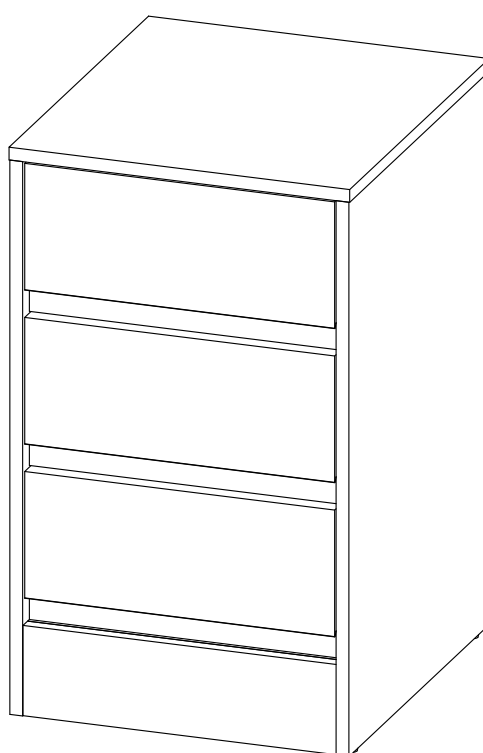
C	X2
	
Ø8X30mm	

13

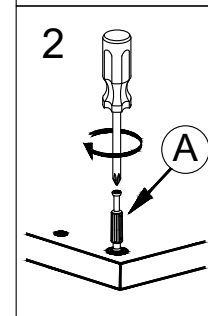
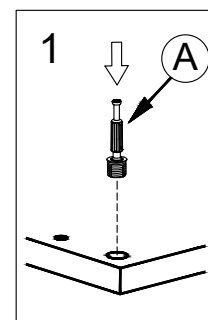
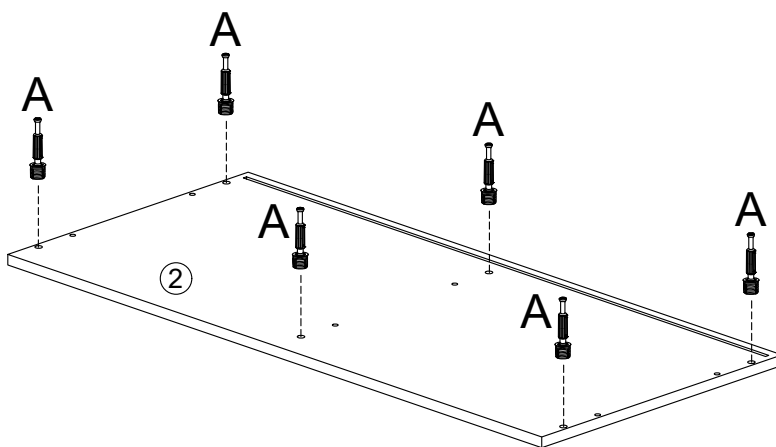
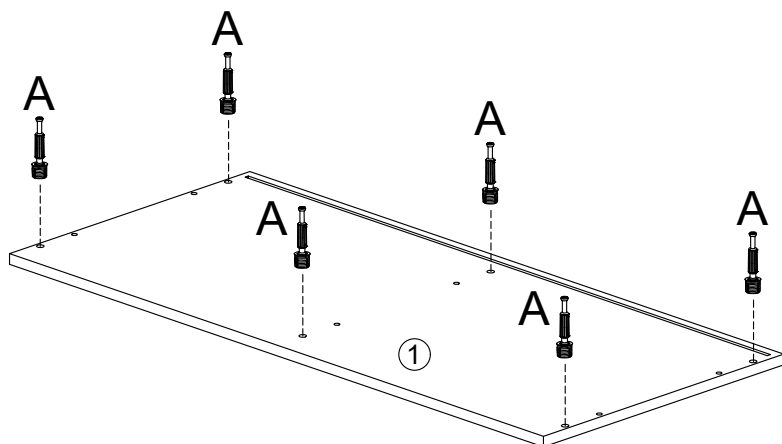


C	X2
	
Ø8X30mm	

14

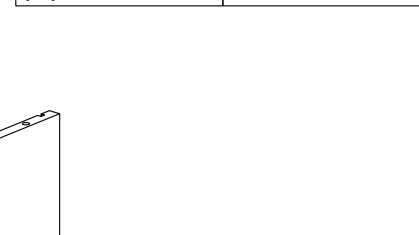
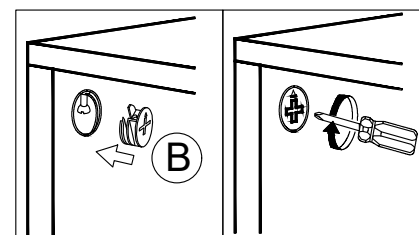
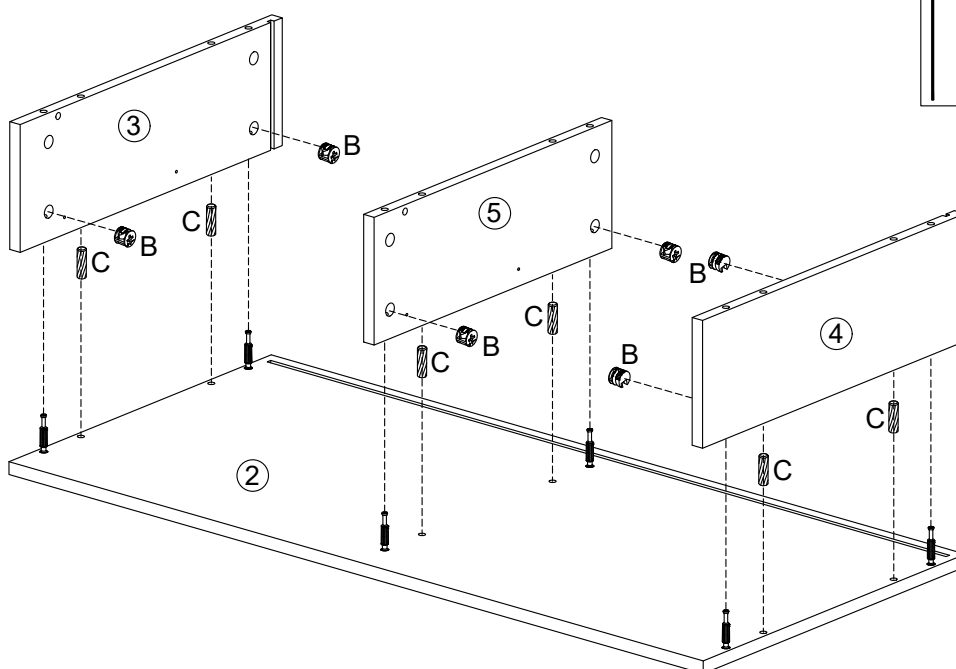


15



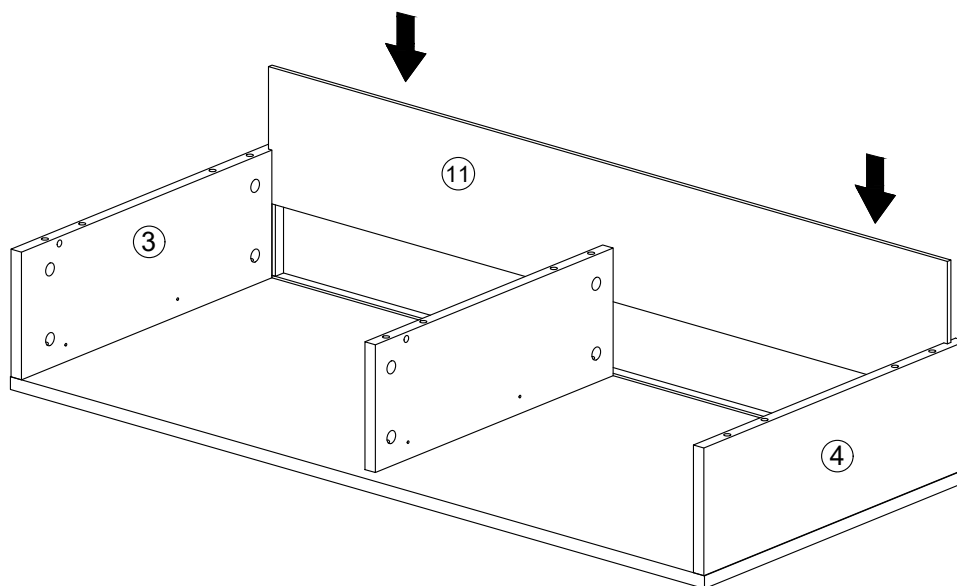
A	X12
Ø6X40mm	

16

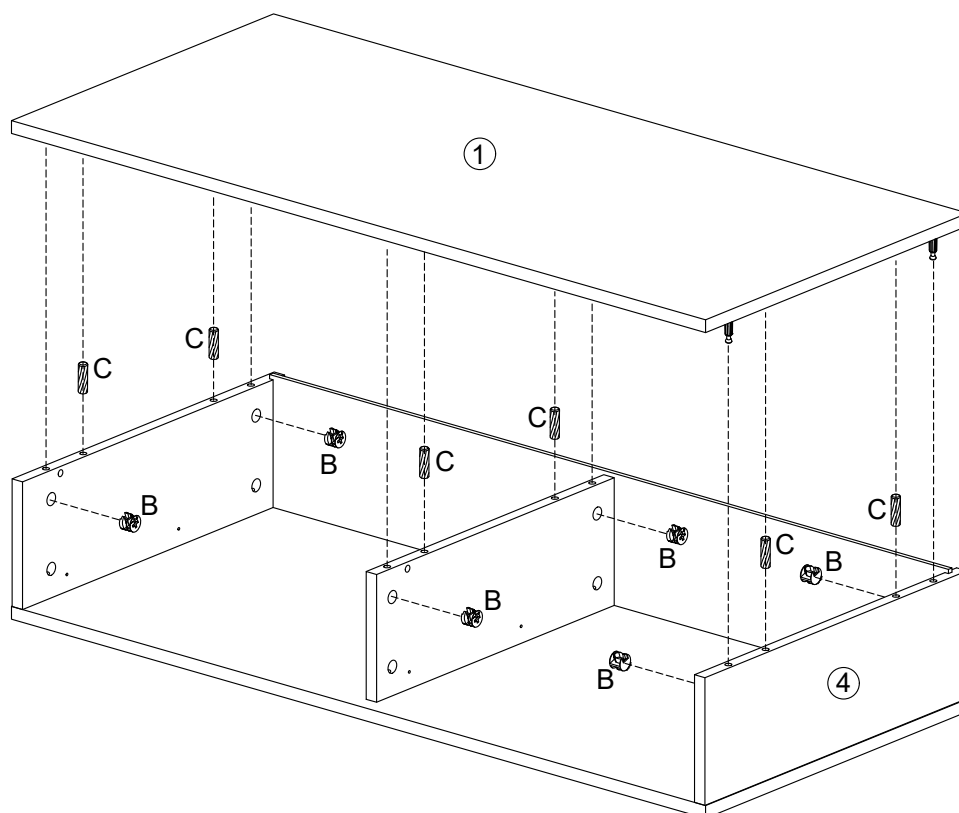




B	X6	C	X6
Ø15X12mm		Ø8X30mm	

17

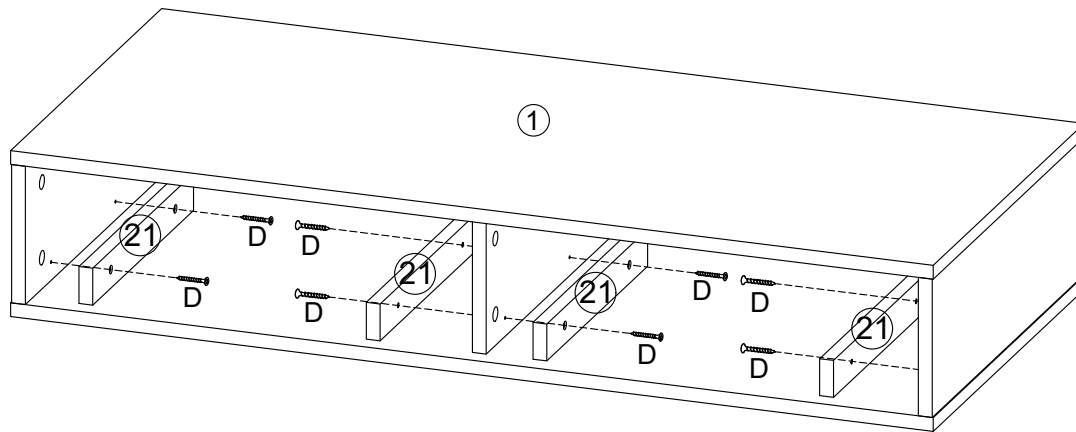
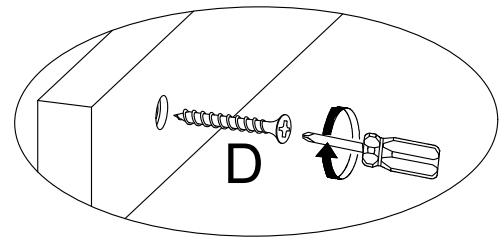


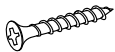
18



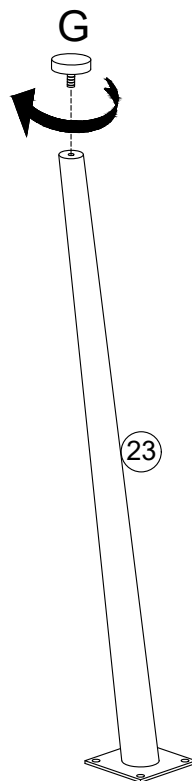
B	X6	C	X6
			
Ø15X12mm		Ø8X30mm	

19




D	X8
	
4X25mm	

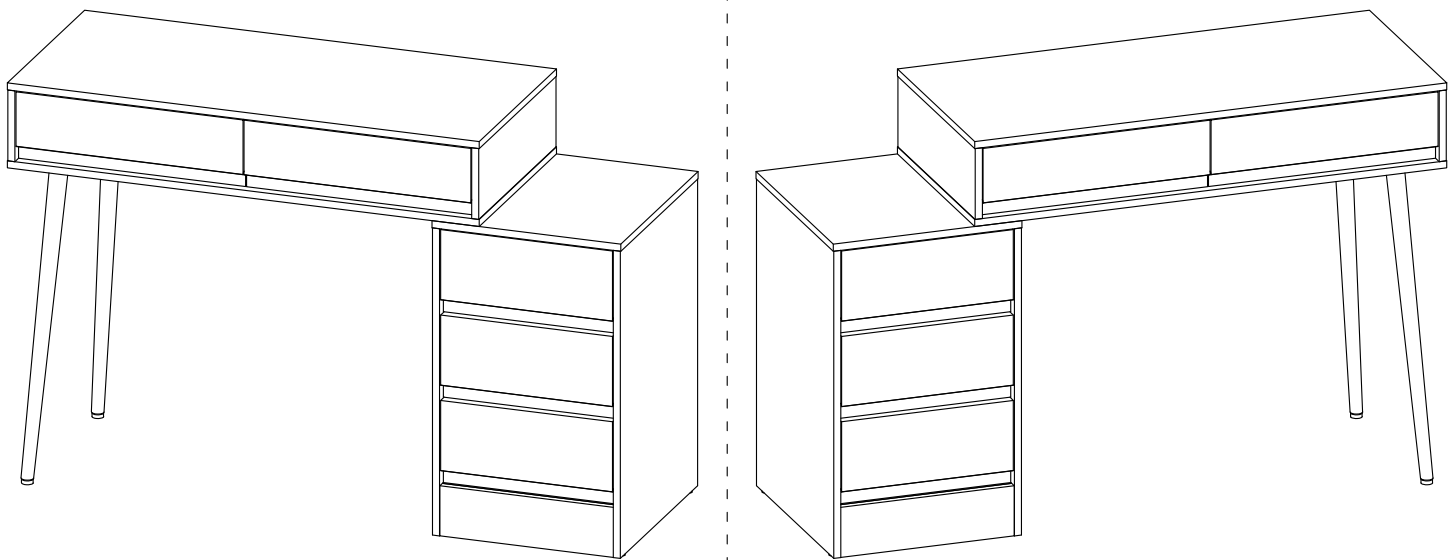
20



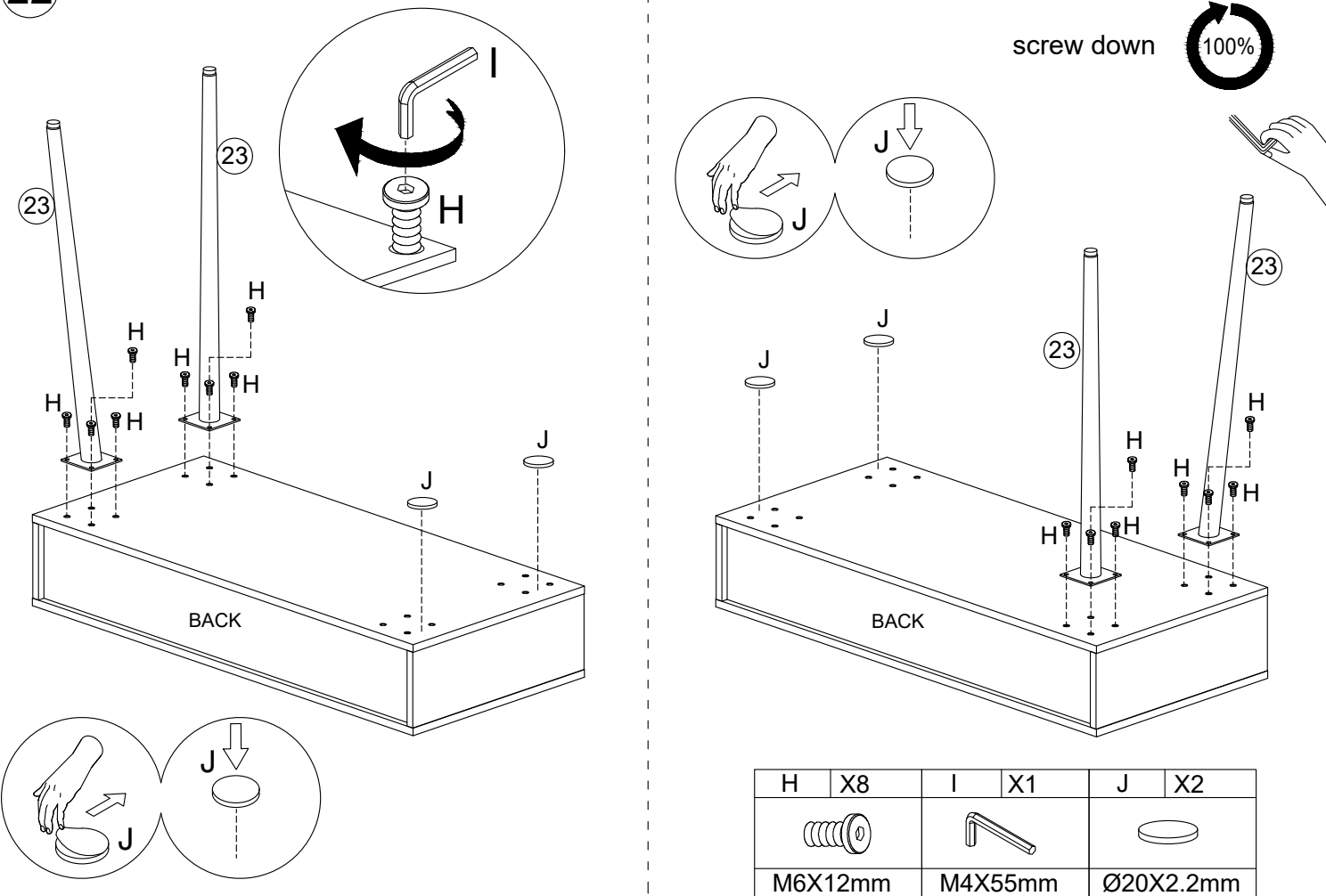
X2

G	X2
	
M6XØ23mm	

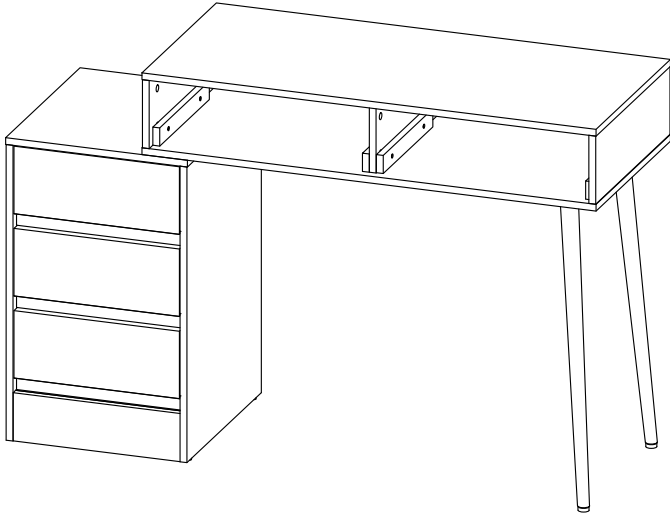
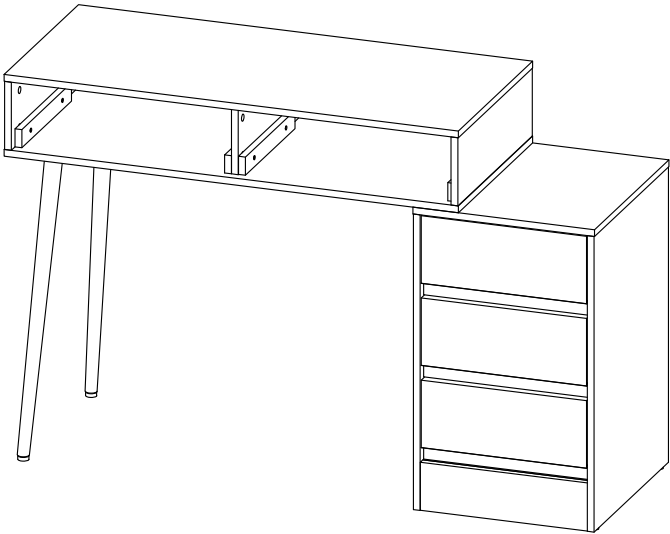
21



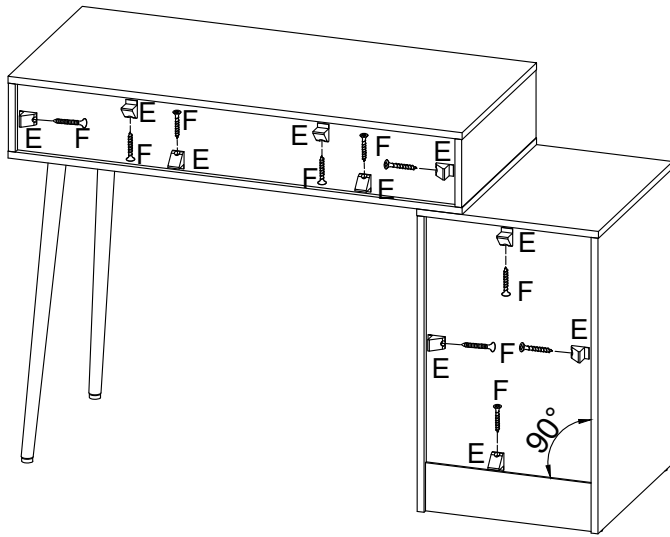
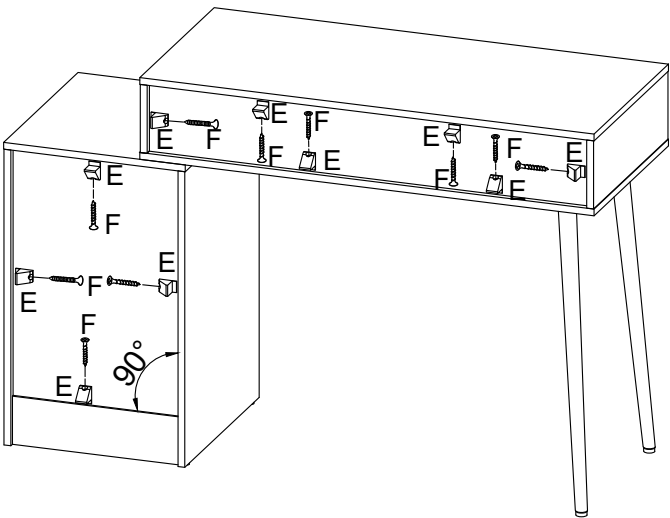
22

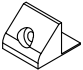



23

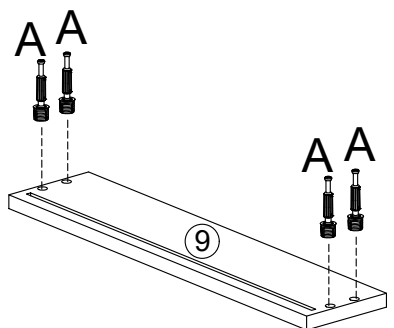
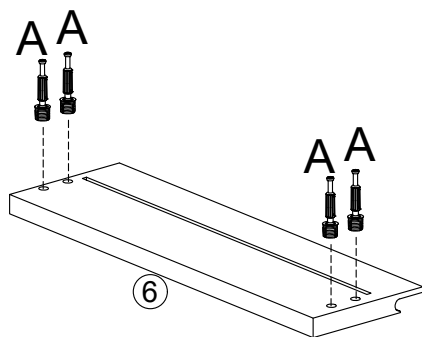


24

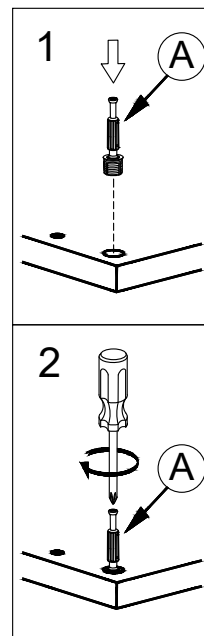
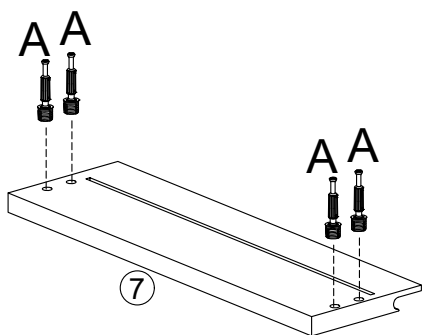


E	X10	F	X10
			
17x16x10.5		3X18mm	

25

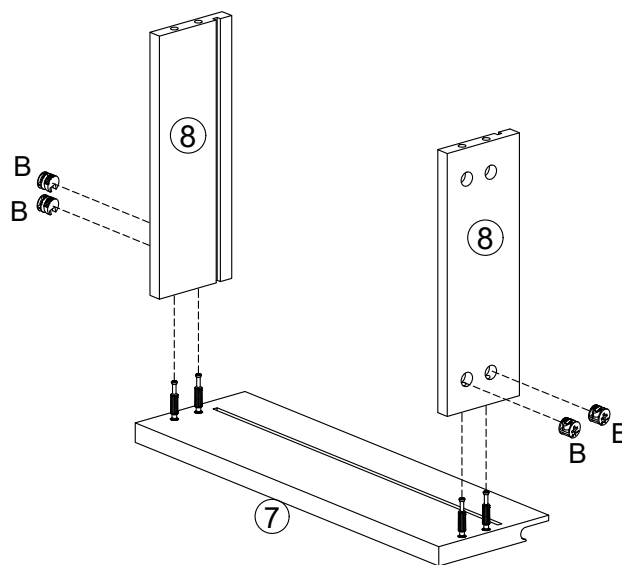
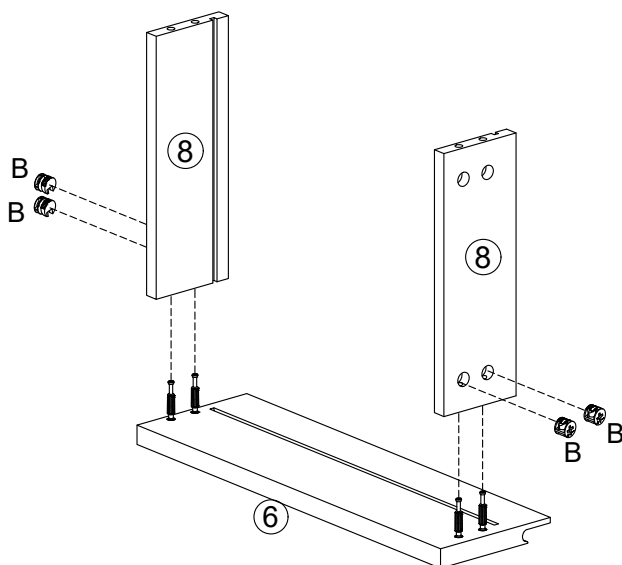


X2



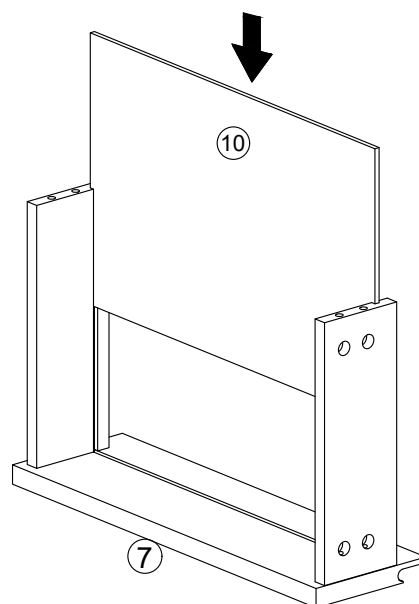
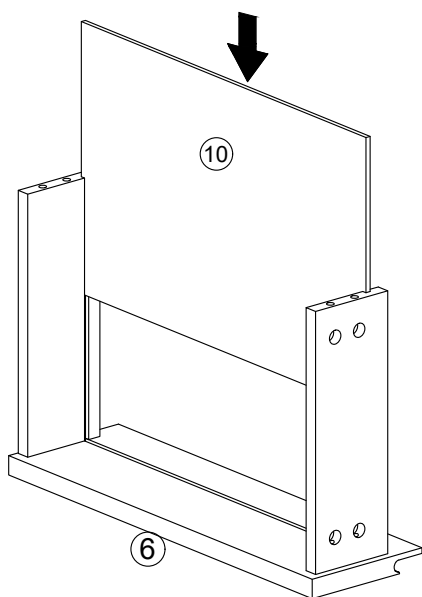
A	X16
Ø6X40mm	

26

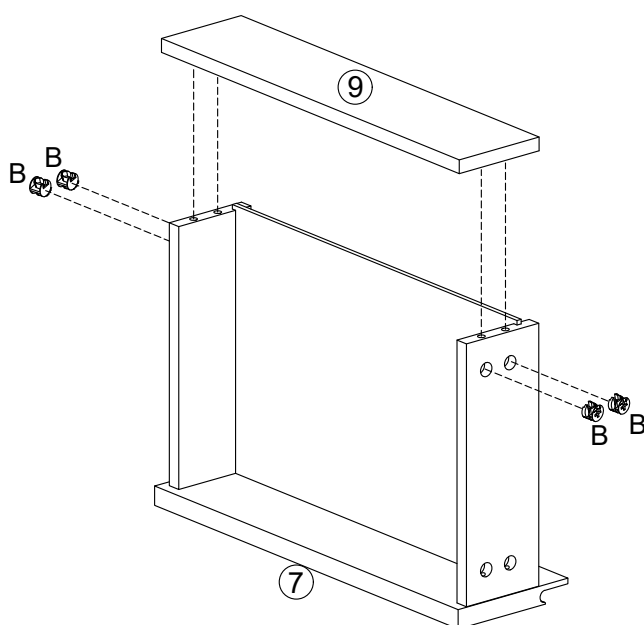
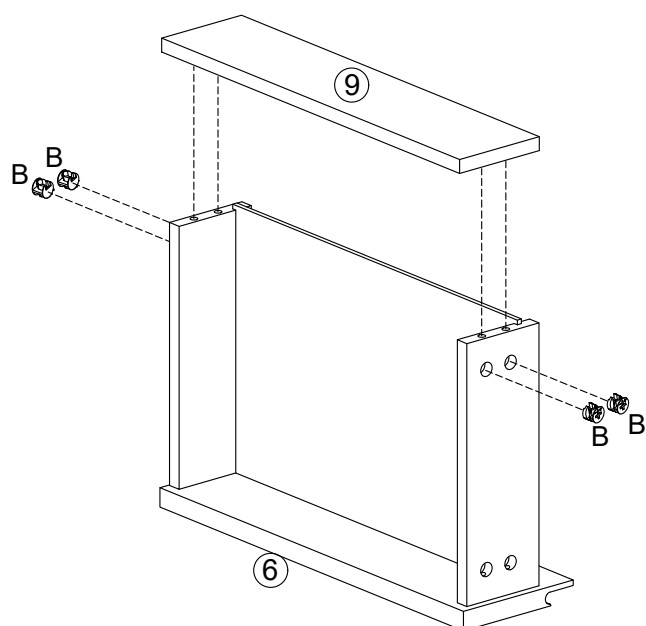


B	X8
Ø15X12mm	

27

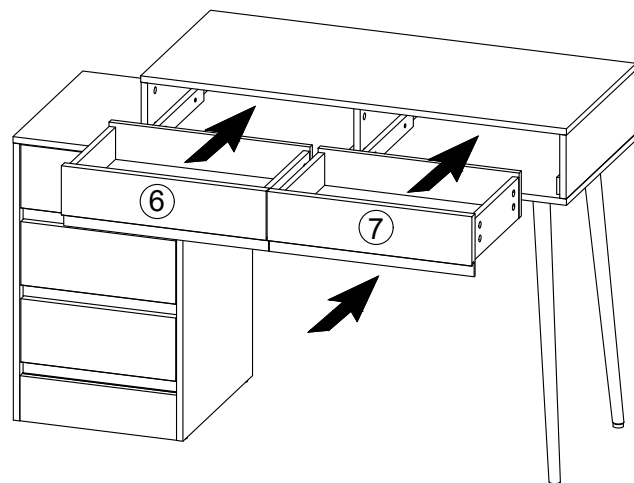
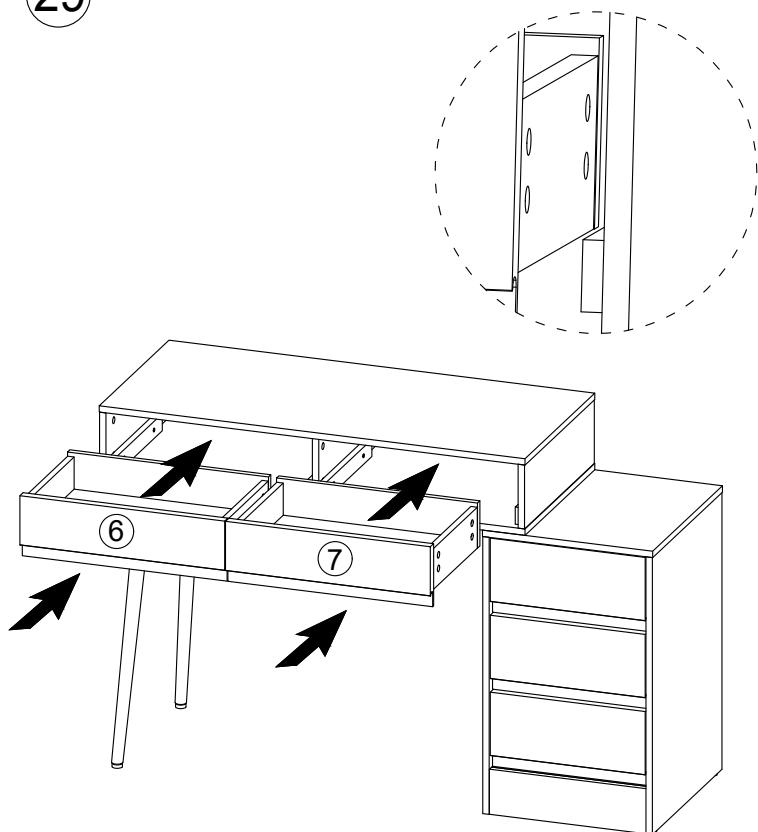


28

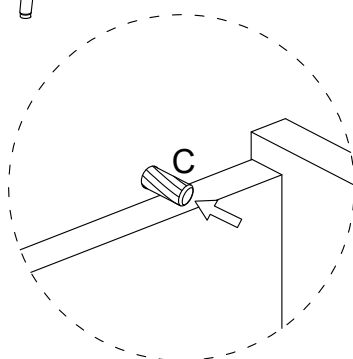
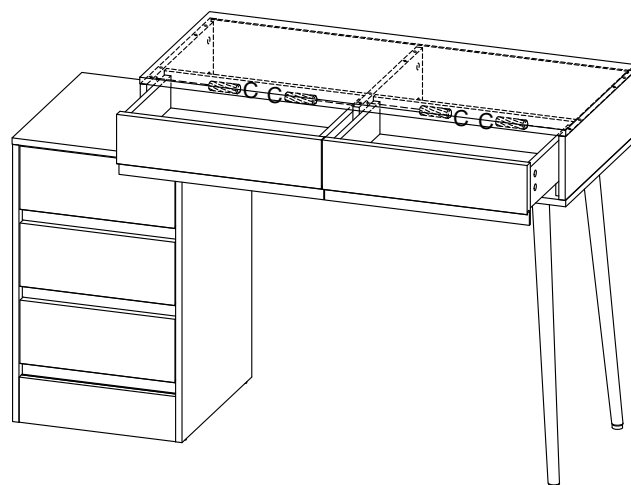
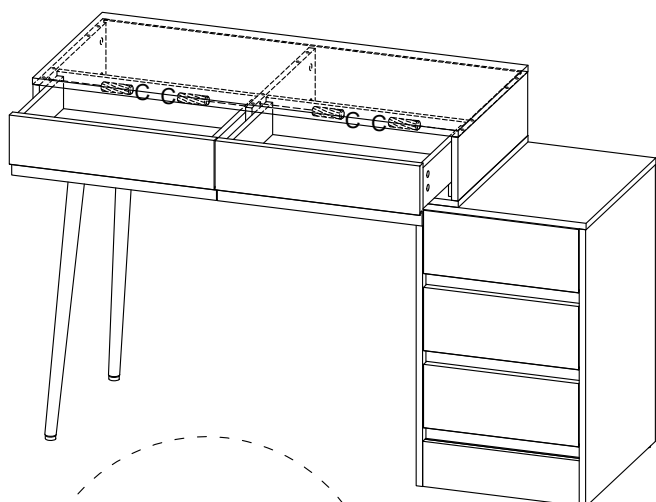



B	X8
Ø15X12mm	

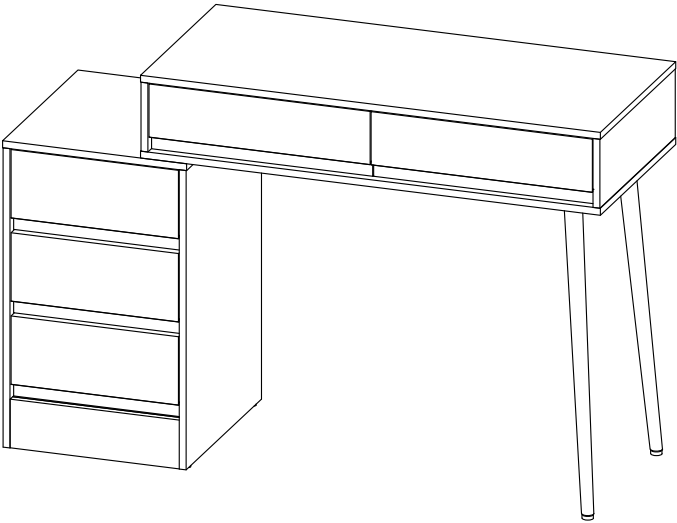
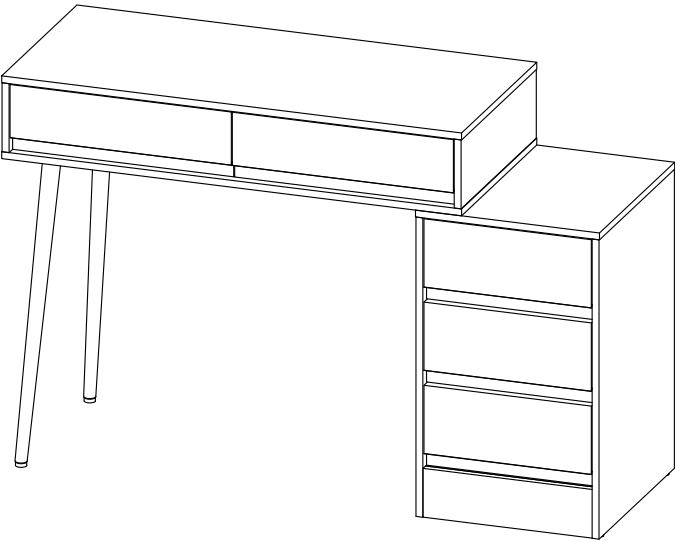
29

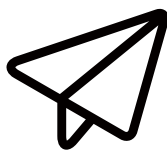


30



C	X4
	
Ø8X30mm	





No heartburn,
when we handle
the return

Our way



Replacement/Refund



You

Their way



Re-package item



Schedule pick-up



Track package



Replacement



You