

Instruction Manual

ROUND FLOOR SHELF LAMP WITH USB AND OUTLET

IMPORTANT SAFETY INSTRUCTIONS:

This portable lamp has a polarized plug (one blade is wider than the other). As a safety feature to reduce the risk of electrical shock and fire, this plug will fit in a polarized outlet only one way. If the plug does not fit fully in the outlet, reverse the plug. If it still does not fit, contact a qualified electrician. Never use with an extension cord unless the plug can be fully inserted. Do not alter this safety feature.

This lamp is for indoor use only. The lamp should not be used near water. Never immerse the lamp in water or other liquids. Never cover the lamp with any object including cloth or paper as this is a fire hazard. Do not handle the bulb immediately after the light is turned off as it will be hot. This is not a toy.



Preparation

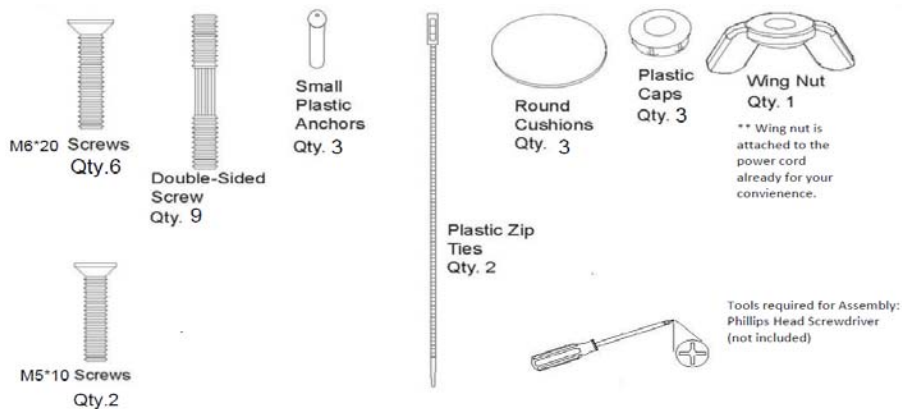
Before beginning assembly of product, make sure all parts are present. Compare parts with package contents list and diagram. If any part is missing or damaged, do not attempt to assemble product. Contact customer service for replacement parts.

Estimated Assembly Time: 20 minutes

Tools required for Assembly: Phillips Head Screwdriver (not included)

CONTENTS

DESCRIPTION	QUANTITY
Bottom board	1
Shelf Board	2
Long Poles	6
Short Poles (USED FOR SHADE FRAME)	3
Top Shade Frame	1
Lamp Socket Board	1
M6*20 Screws	6
M5*10 Screws	2
Small Plastic Anchors (for shade)	3
Zip Ties	2
Round Cushions	3
Plastic Caps	3
Shade	1



ASSEMBLY INSTRUCTIONS:

Step 1: Holding bottom board (2) upside-down, Insert three screws (1) (m6*20) through the holes in the bottom board and tighten into 3 long poles (3) so that the screw-heads are recessed into the bottom board (3). Place round cushions to cover the three holes. Turn this completed section right-side-up. Screw three double-sided screws (4) into top of the three long poles (3). Place first shelf board (5) onto three protruding double-sided screws (4). (FIG 1)

Step 2: Continue with the same assembly about for the next section: Screw three long poles (3) onto the protruding double-sided screws (4). Screw four double-sided screws (4) on top of the three long poles (3). Place second shelf board (5) onto three protruding double-sided screws (4).

Step 3: Screw three long poles (3) onto the protruding double-sided screws (4). Screw three double-side screws (4) into top of the three long poles (3). Place lampholder board (9) onto three protruding double-sided screws (4). Attach the lampholder to this lampholder board (9) by inserting the base screw of the lampholder (8) through the lampholder board (9) and securing it with the wing nut (7) underneath the lampholder board (9).

Step 4: Screw three short poles (10) onto the protruding double-sided screws (4). Place top frame (14) onto the three poles. Insert three screws (15) through holes in the frame and tighten into three short poles (10) so that the screw-heads are recessed into the top frame (14). Place small plastic caps (16) into recessed holes in the lamp holder board.

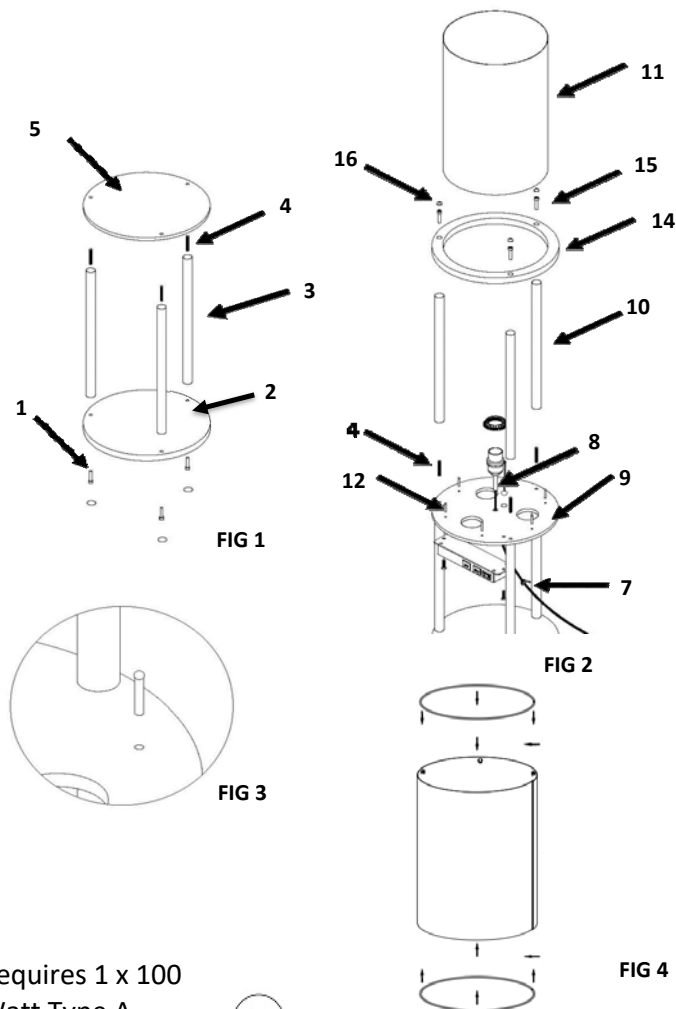
Step 5: Insert the four small plastic anchors (12) (FIG 3) into the small holes near the edge of the lampholder board (9). Unfold fabric shade (11) and clip the shade to the metal rings (both top and bottom FIG 4) and place through the top frame (9) down onto the lampholder board (7) outside of the four small plastic anchors (12). Use plastic zip ties (13) to secure the electric cord to the poles along the side.

Step 6: Using the remaining screws two screws attached the USB/Power Box to the underside of the lampholder board (9) until secure.

Assembly is now complete install the bulb and turn on/off the lamp via the pull cord on the lamp holder board.

CLEANING & MAINTENANCE:

1. Unplug the fixture before cleaning.
2. Use a clean, dry, soft, lint-free cloth.
3. Do not use water or other chemical cleaning agents.



Requires 1 x 100
Watt Type A
Medium Base
Bulb (not
included)



LIMITED WARRANTY

1. Limited Warranty.

Manufacturer warrants that the products sold hereunder will be free from defects in material and workmanship for a period of one (1) year from the date of purchase. If the products do not conform to this Limited Warranty during the warranty period (as herein above specified), Buyer shall notify Manufacturer in writing of the claimed defects and demonstrate to Manufacturer's satisfaction that said defects are covered by this Limited Warranty. If the defects and proof of purchase are properly reported to Manufacturer within the warranty period, and the defects are of such type and nature as to be covered by this warranty, Manufacturer shall, as its own expense, furnish replacement products or, at Manufacturer's option, replacement parts for the defective products. Installation of the replacement products or replacement parts shall be at Buyer's expense.

2. Exclusive Obligation:

THIS WARRANTY IS EXCLUSIVE. The sole and exclusive obligation of Manufacturer shall be to repair or replace the defective products in the manner and for the period provided above. Manufacturer shall not have any other obligation with respect to the products or any part thereof, whether based on contract, tort, strict liability or otherwise. Under no circumstances, whether based on this Limited Warranty or otherwise, shall Manufacturer be liable for incidental, special, or consequential damages.

3. Other Statements.

Manufacturer's employees or representatives' oral or other written statements do not constitute warranties, shall not be relied upon by Buyer, and are not part of the contract for sale or this limited warranty.

4. Entire Obligation.

This Limited Warranty states the entire obligation of Manufacturer with respects to the products. If any part of this Limited Warranty is determined to be void or illegal, the remainder shall remain in full force and effect.