

! DIRECT WIRE FIXTURES: WE STRONGLY RECOMMEND INSTALLATION BY A LICENSED ELECTRICIAN.

These instructions are provided for your safety. It is important that they are read completely before beginning the installation of your fixture. Turn the Power to fixture "OFF" before assembly.

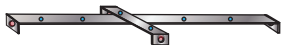
1. STEP ONE

Shut OFF the main electrical supply from the main fuse box /circuit breaker.

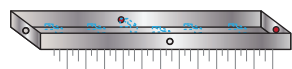
2. STEP TWO

Remove all parts from box and place them neatly in front of you in a clean open space. Do not throw away any parts. If you notice anything missing or damaged please contact us within 7 business days.

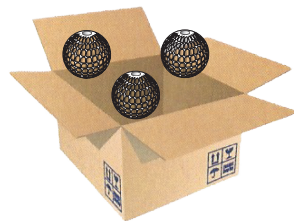
1. Bracket TOP: This connects to the ceiling.



2. Canopy BOTTOM: Will contain all the pendants wires and bulbs folded inside already attached.

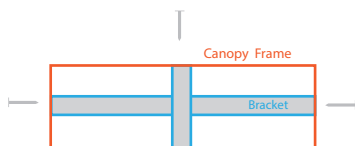


3. The GLASS: Each glass pendant will be wrapped separately.
*DO NOT add the glass till canopy is hanging from ceiling.



3. STEP THREE

Attach TOP Bracket to ceiling with correct corresponding anchors*.
*Not provided (The type of anchors needed depends on the type of ceiling the canopy will be attached to) [See diagram for reference.](#)



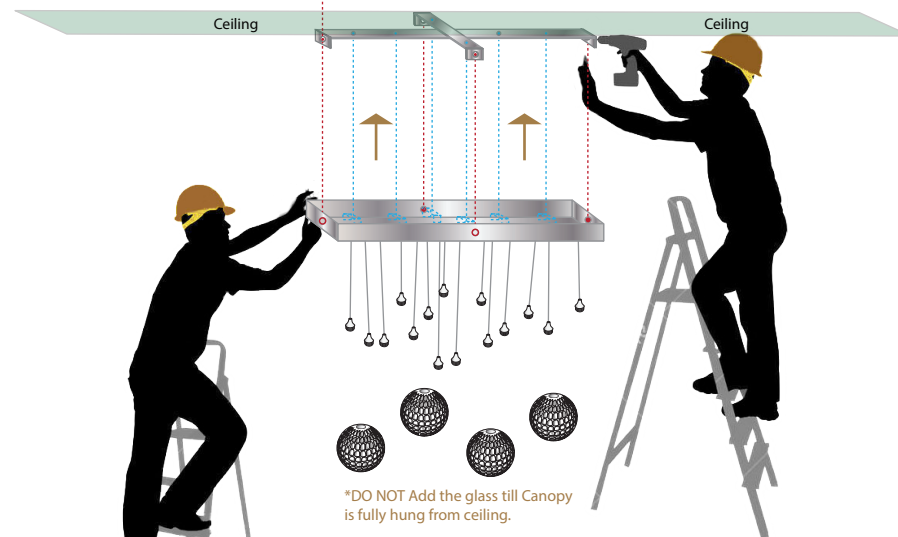
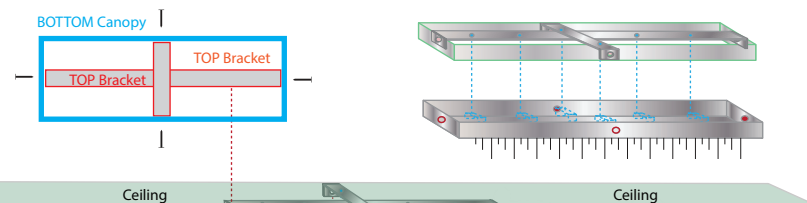
4. STEP FOUR

Connect electrical wire to main Canopy wires with a Certified Electrician.



5. STEP FIVE

Attach Canopy to Bracket. Do not use a power drill to insert canopy screws into the bracket. This should be done by hand gently. [See diagram for reference.](#)



*DO NOT Add the glass till Canopy is fully hung from ceiling.

Wires: When handling the wires do not squeeze, crease, or bend the wires. Remove the ties and let each wire down slowly. During installation, check the wires for any creases. Help straighten the wire by slightly bending the wire against the crease. Stroke the wire downward while slightly bending it. (Sometimes the weight of the glass is not enough to straighten the wire where there is a crease, so stroking will be necessary.)

6. STEP SIX

Turn power switch to "ON" to test power/electricity of light fixture.



7. STEP SEVEN

Carefully remove GLASS from bubble wrapping and attach GLASS to wires.
(*Glass should be screwed into fitting with bulb.)

