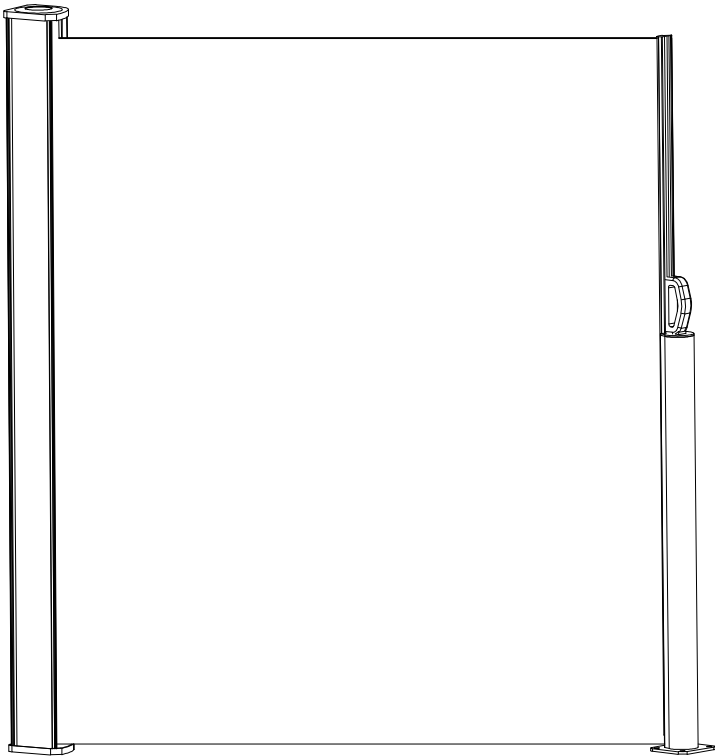
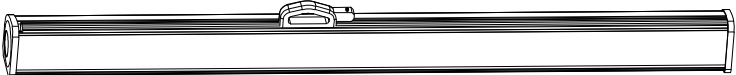
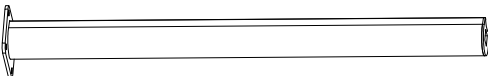

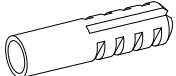

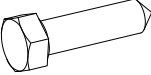




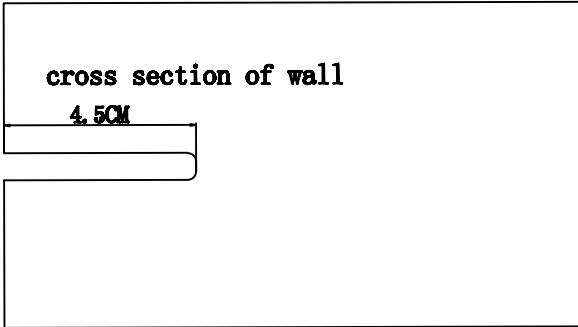
# Side Awning



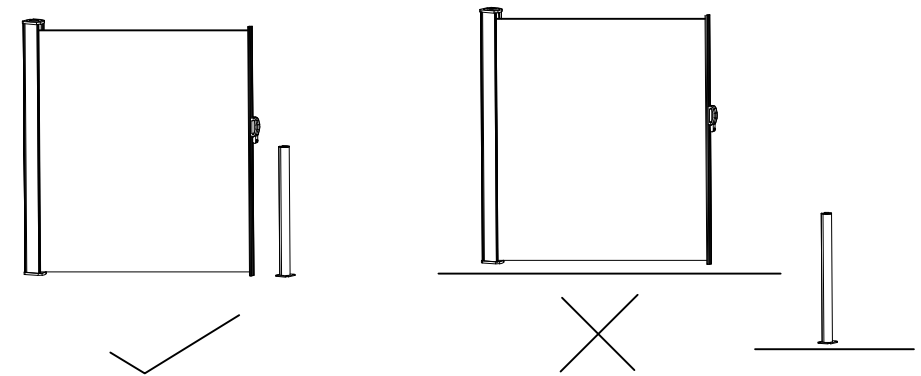
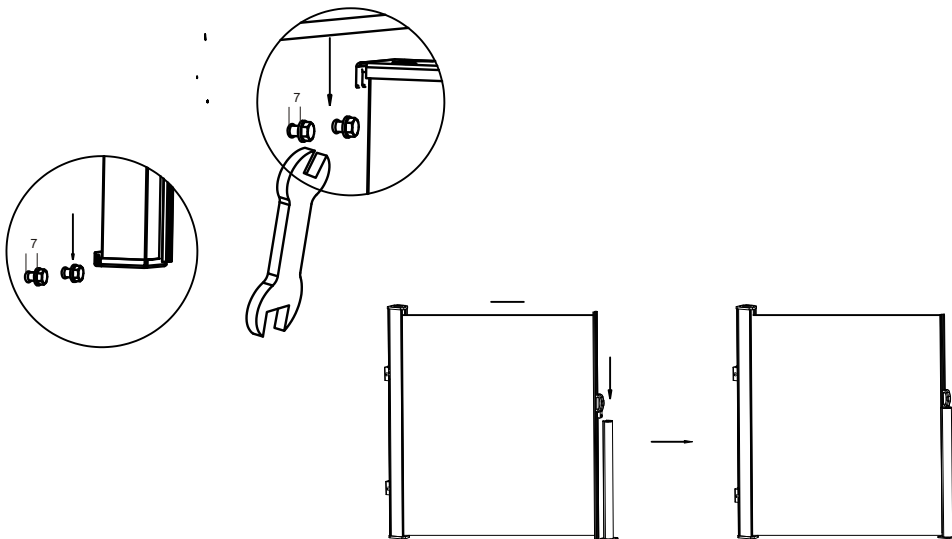
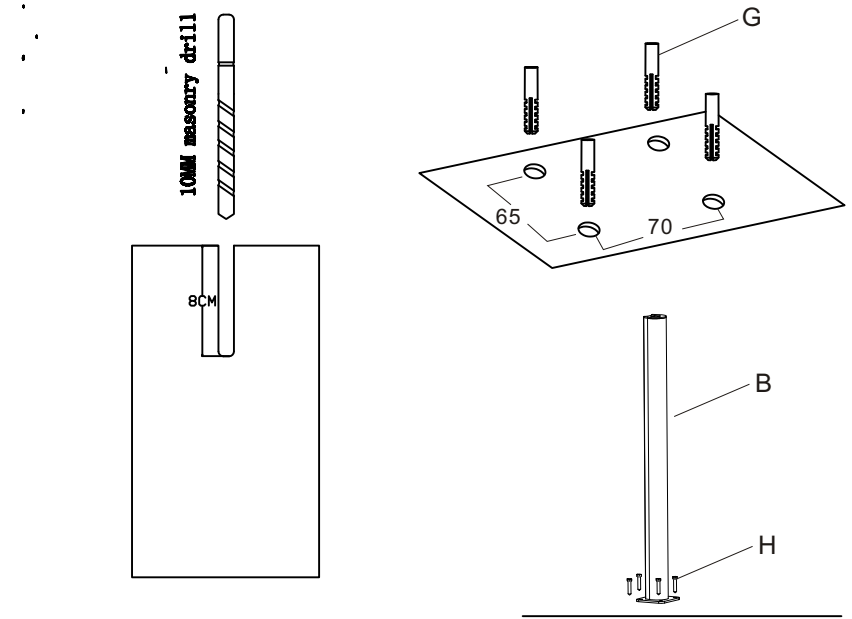
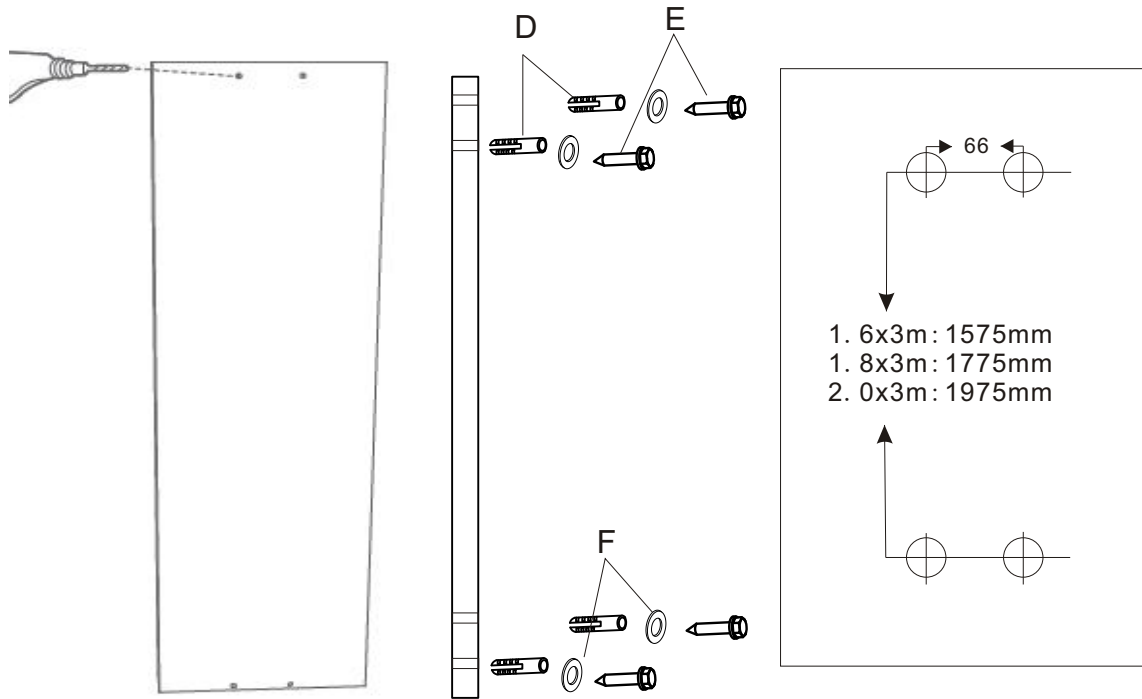
A		1			
B		1			
D		4	G		4
E		4	H		4
F		4	I		4



10 MM masonry drill



Put the main part(A) on the wall and mark the positions for the pre-drilled holes on it.



**Note:** When mounting the side awning, keep the main part (A) and post (B) in a straight line, or the awning fabric will be difficult to open and close.

**Note:** The distance between A and B should not exceed 3 m. Otherwise the handle of awning fabric can not be put into the post, in other words, the awning cloth can not be kept open.