

INSTRUCTIONS

Modular Sofa

CARTON A PART LIST

A Single Seat Frame



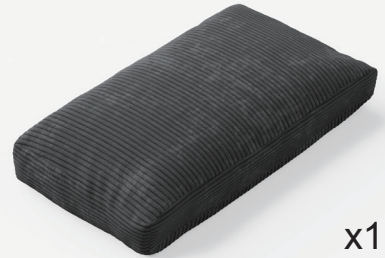
x1

B Single Back Frame



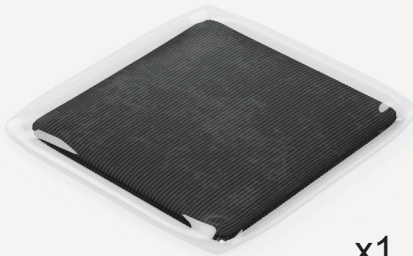
x1

C Back Pillow



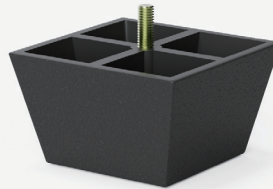
x1

D Seat Cushion



x1

1 Plastic Leg



x4

2 Plastic Washer



x4

CARTON B PART LIST

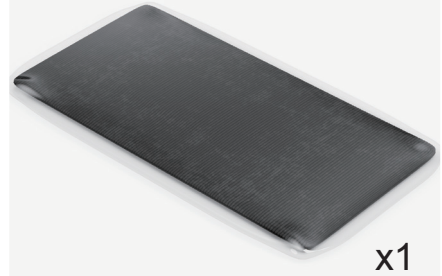
E Double Seat Frame



F Double Back Frame



G Double Seat Cushion



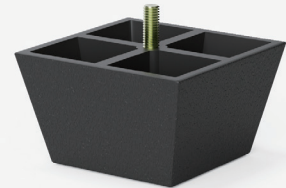
H Waist Pillow



C Back Pillow



1 Plastic Leg



2 Plastic Washer



x4

CARTON C1 PART LIST

A Single Seat Frame



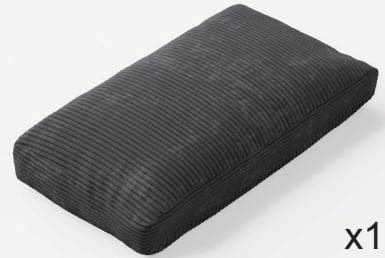
x1

B Single Back Frame



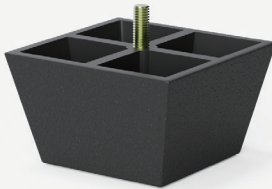
x1

C Back Pillow



x1

1 Plastic Leg



x4

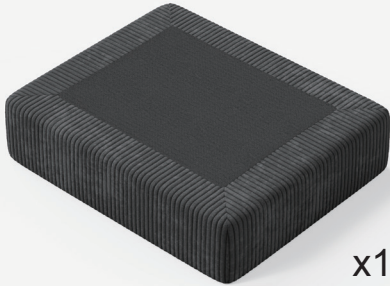
2 Plastic Washer



x4

CARTON C2 PART LIST

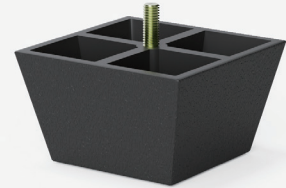
I Ottoman Seat Frame



J Right Seat Cushion



1 Plastic Leg

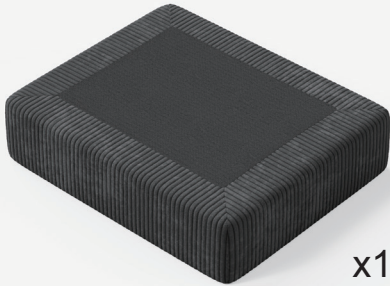


2 Plastic Washer

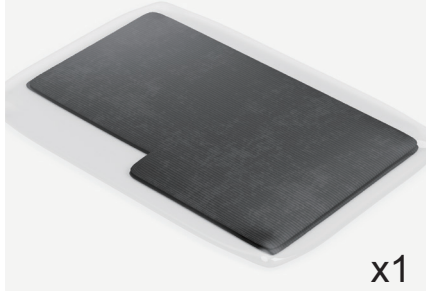


CARTON C3 PART LIST

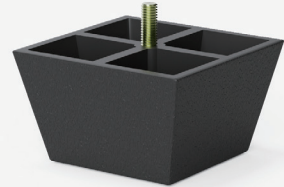
1 Ottoman Seat Frame



K Left Seat Cushion



1 Plastic Leg



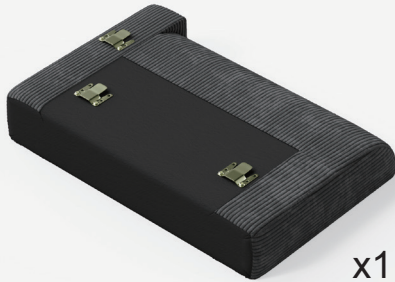
2 Plastic Washer



x4

CARTON D PART LIST

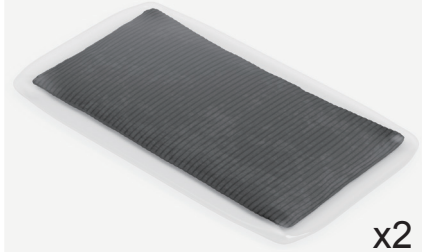
L Right Armrest



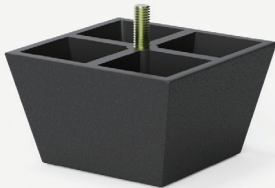
M Left Armrest



N Armrest Pillow



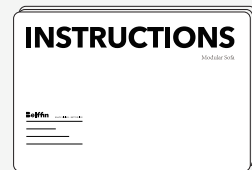
1 Plastic Leg



2 Plastic Washer

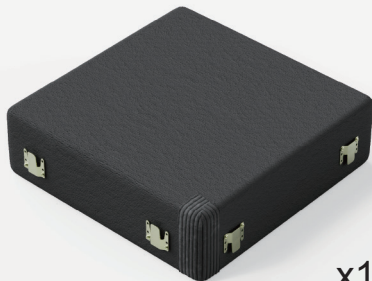


3 Assembly Instructions



CARTON E PART LIST

O Corner Seat Frame



x1

P Corner Long Back Frame



x1

Q Corner Short Back Frame



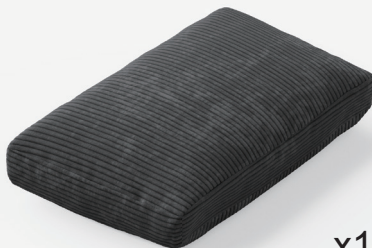
x1

C Back Pillow



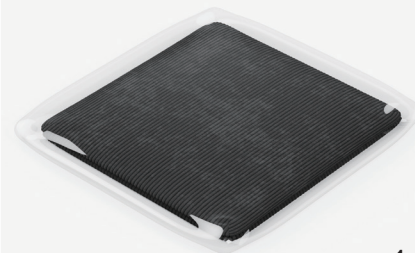
x1

R Corner Short Pillow



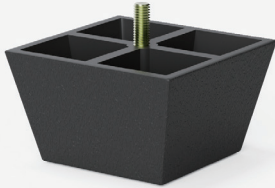
x1

D Seat Cushion



x1

1 Plastic Leg



x4

2 Plastic Washer



x4

Notice:

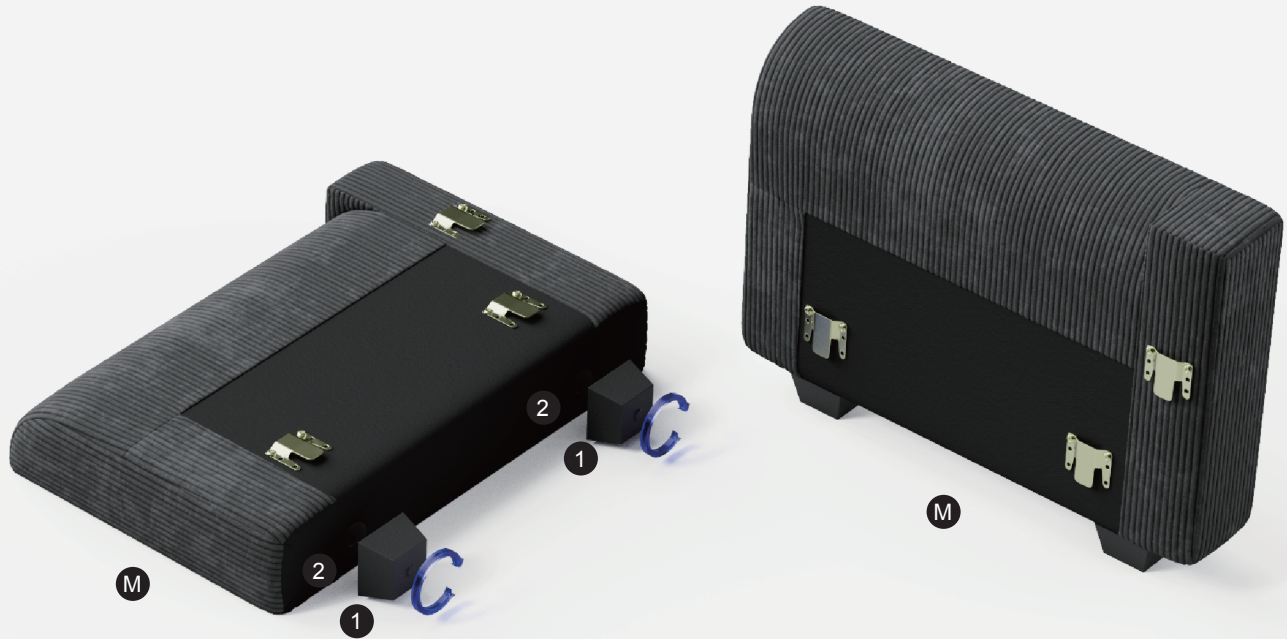
Modular sofas consist of several modules as described above, but not all types are included in every sofa set.

You can extend your sofa at any time by ordering new modules.

Please note the following points when assembling your sofa:

- ① Screw all the legs of the sofa tightly before starting to connect these modules
- ② Put these modules together should be done in right-to-left order
- ③ Connect the Right Amrest and all Seat Frame first, then the Backrest and Left Armrest

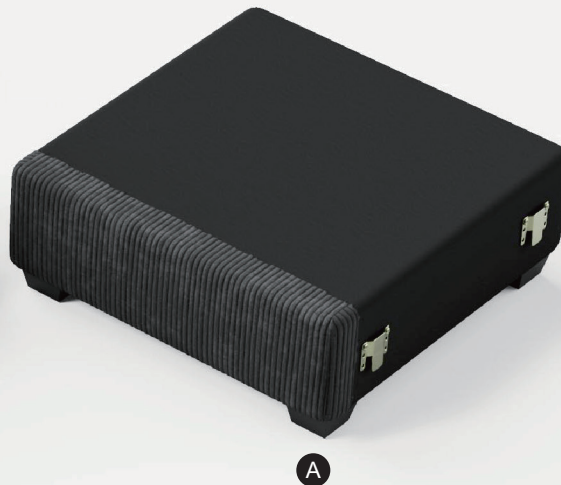
Step1:



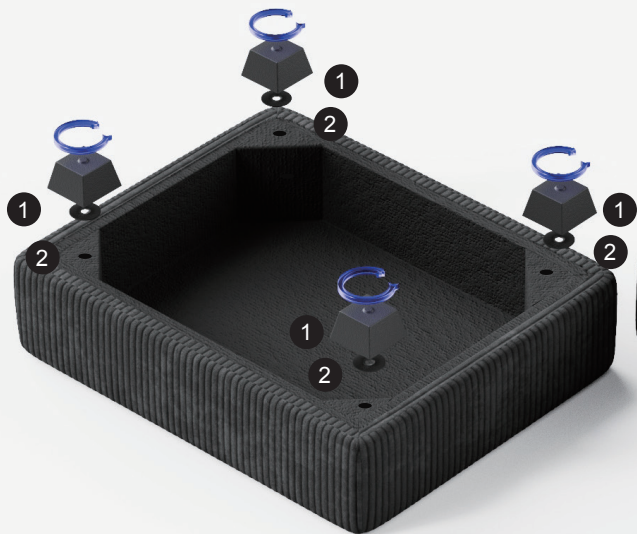
Step2:



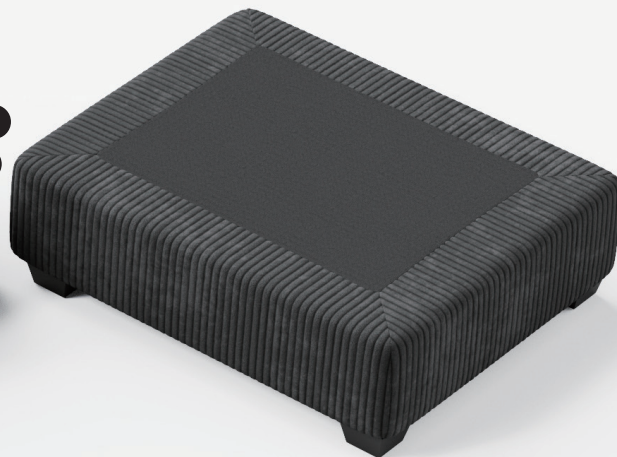
Step3:



Step4:

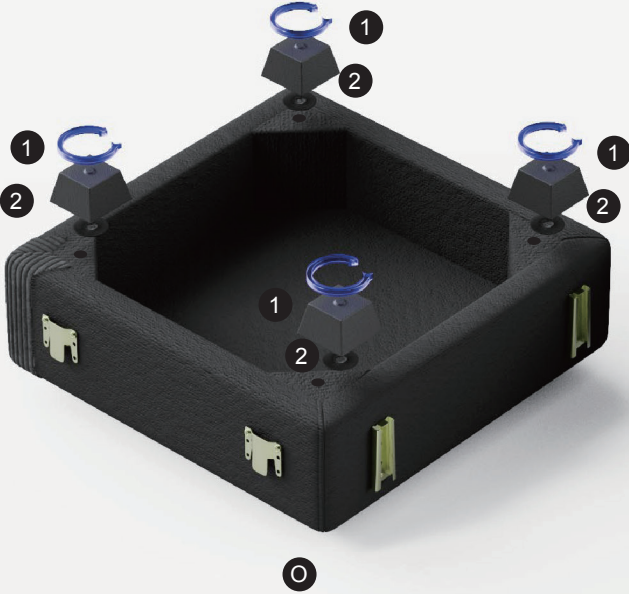


1



1

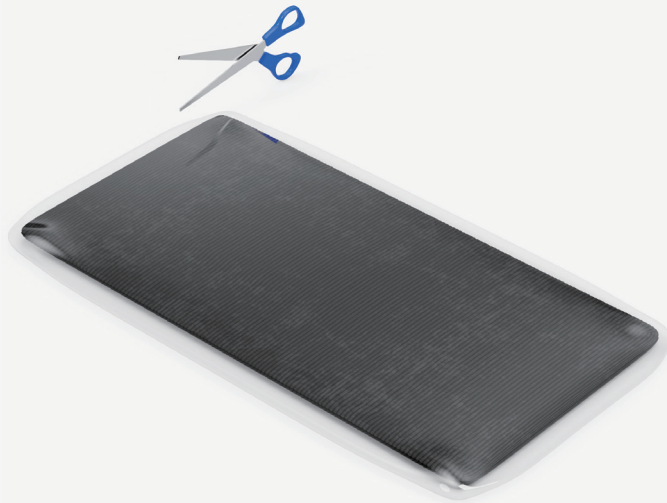
Step5:



Step6:



Step7:

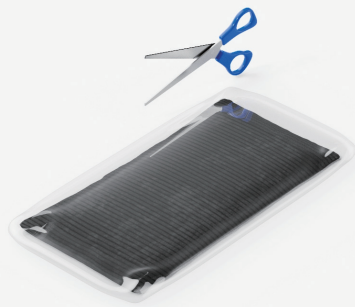


G



G

Step8:

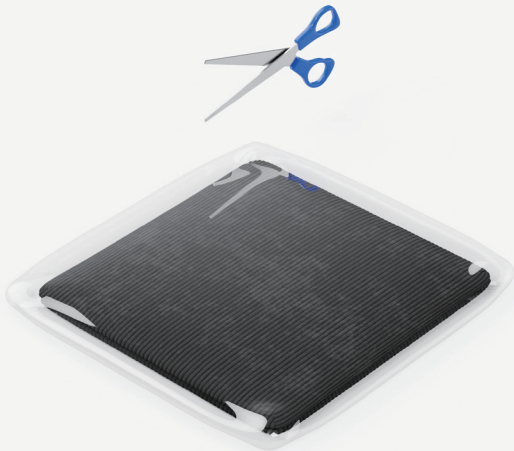


N



N

Step9:

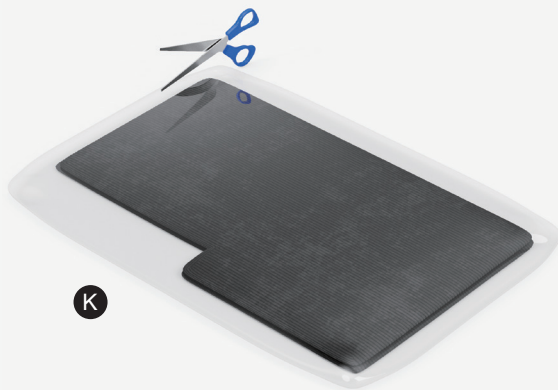
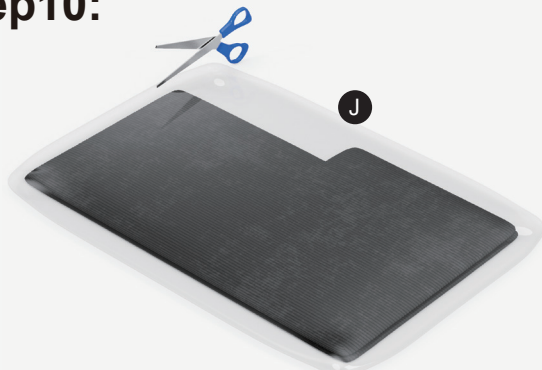


D

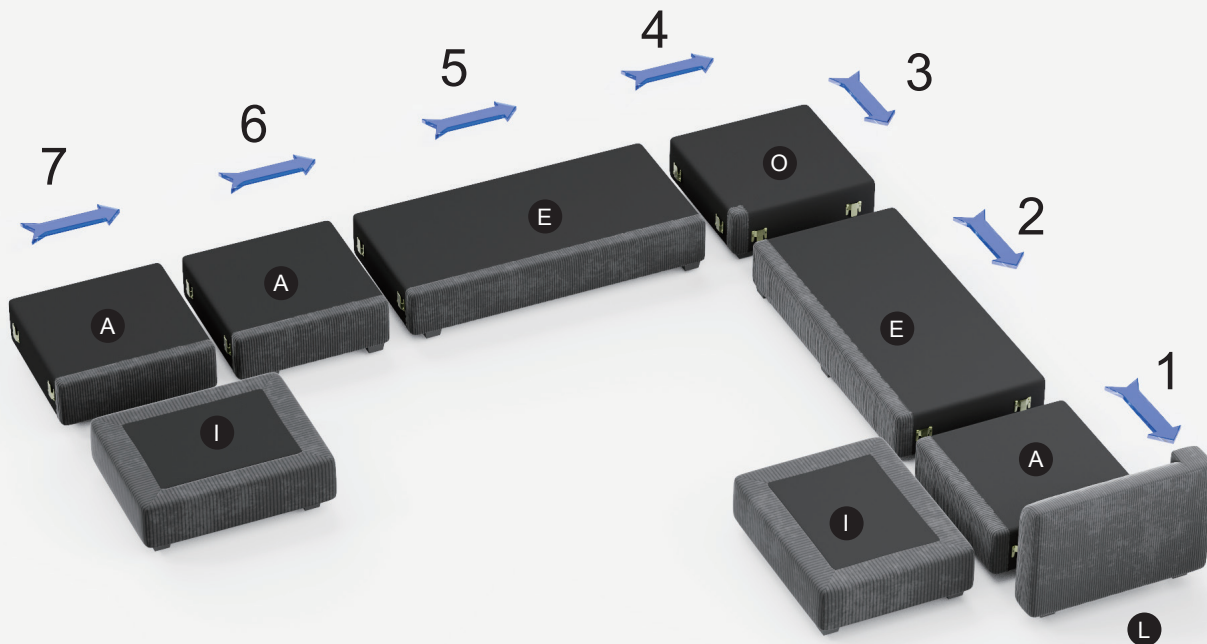


D

Step10:

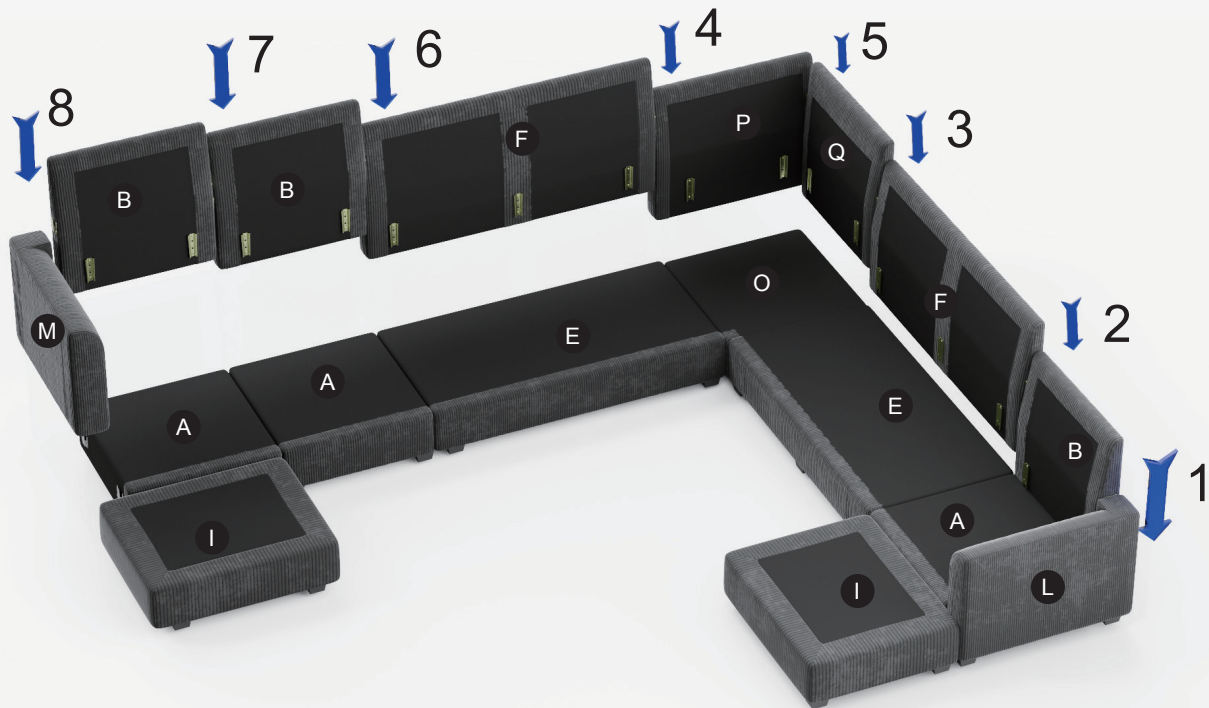


Step11:



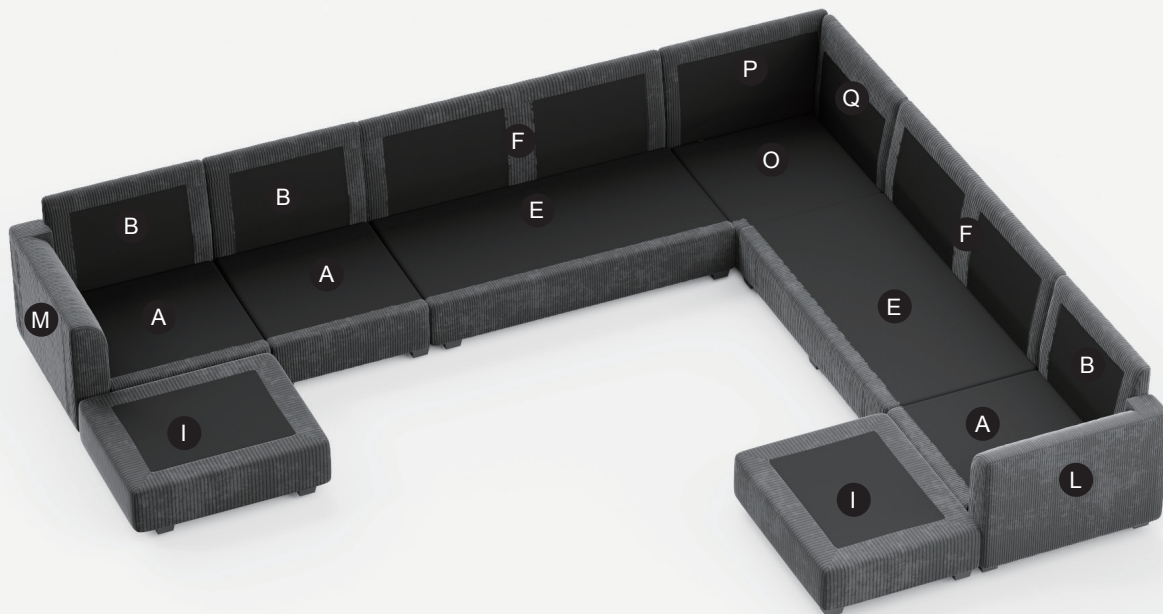
Follow the arrows to connect the Right Armrest and each Seat Frame in right-to-left order. If your sofa does not contain a certain module, skip it and connect to the next one.

Step12:



Connect each Backrest and the Left Armrest in right-to-left order.

Step13:



Step14: Done



This combination is made up of part list included in the carton (A+2B+2C1+C2+C3+D+E)

Combination 1



This combination is made up of part list included in the carton (B+2C1+C2+C3+D)

Combination 2



This combination is made up of part list included in the carton (2B+D+E)