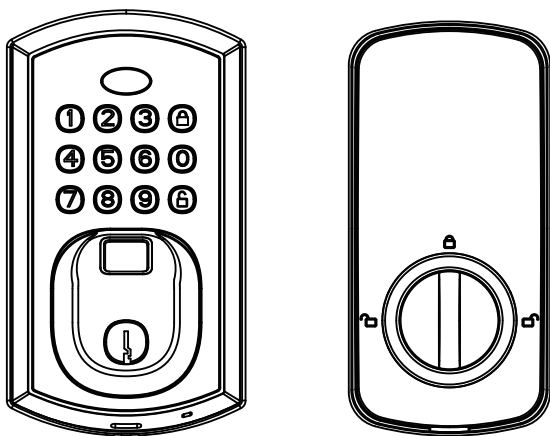


User Manual

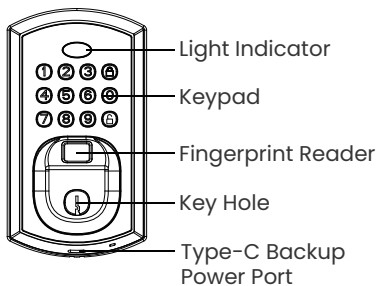
Smart Fingerprint Deadbolt



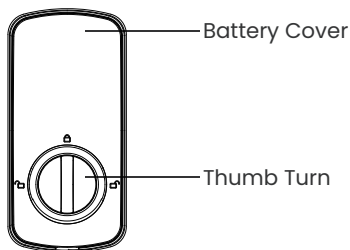
DESLOC™

Lock Body Overview

Exterior Lock:



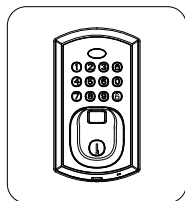
Interior Lock:



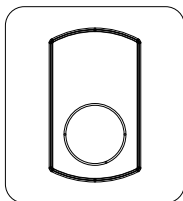
Specifications

Batteries	4 xAA
Working Temperature	-30 °C~70 °C (Not Condensation)
Door Thickness	35~50mm
Material	Zinc Alloy
Unlock Mechanism	Fingerprint/Key/ Password
Password	99 Groups
Fingerprint	50 Groups
Relative Humidity	<95 %

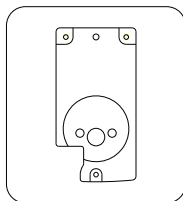
Components Overview



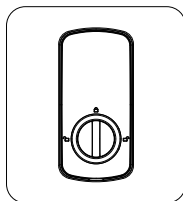
a.Exterior Lock



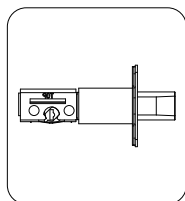
b.Front Rubber Pad



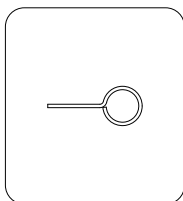
c.Mounting Plate



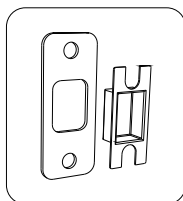
d.Interior Lock



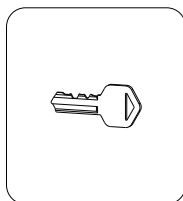
e.Deadbolt



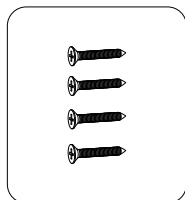
f.Reset Tool



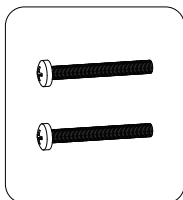
g.Strike Plate



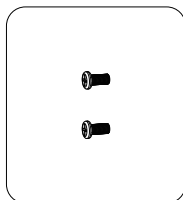
h. Mechanical Key



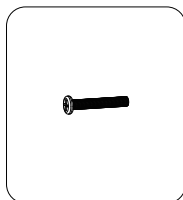
i. Deadbolt/Strike
Plate Screws



j. Mounting Plate
Screws

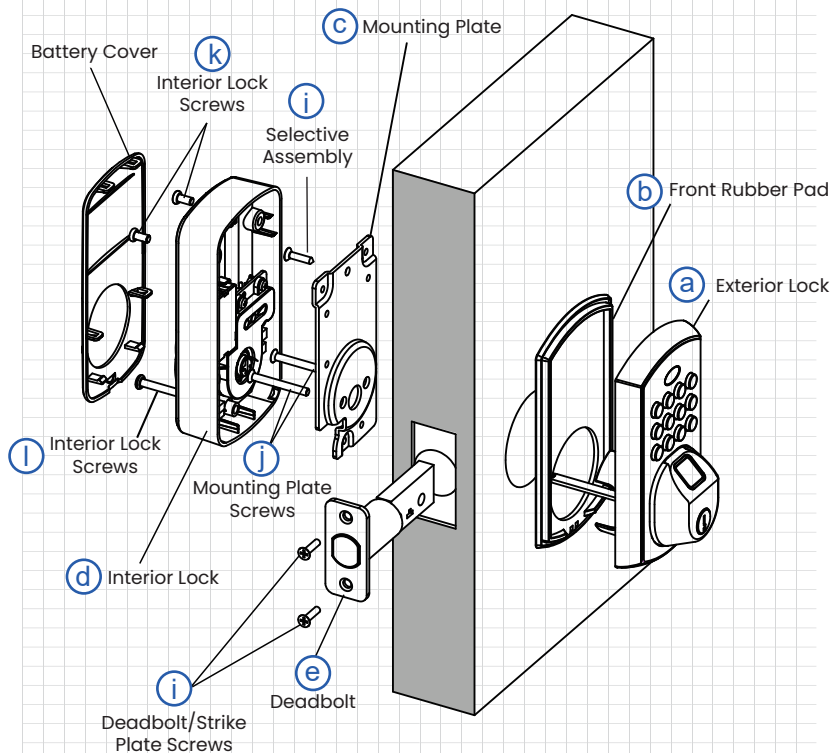


k. Interior Lock
Screws



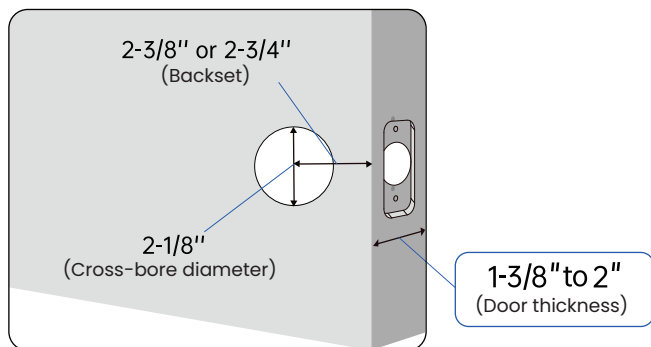
l. Interior Lock
Screws

Installation Overview

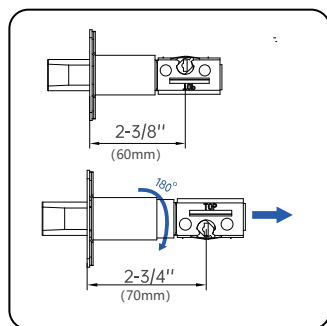


How to Install the Lock

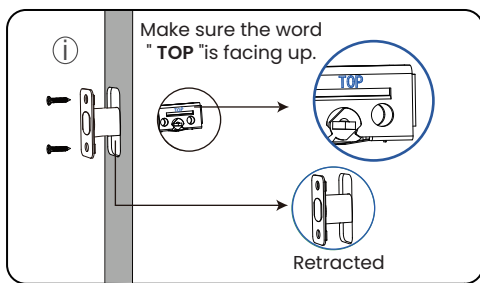
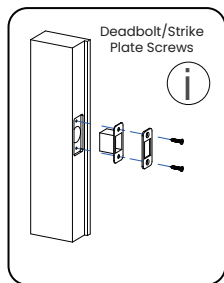
Make sure the door has a thickness of 1-3/8" to 2", a hole diameter of 2-1/8", and a measured backset size of 2-3/8" or 2-3/4" with the deadbolt.



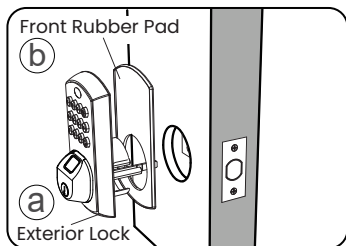
Check your door to see if the deadbolt requires adjustment. If the backset is 70 mm, turn the faceplate 180° to extend the length.



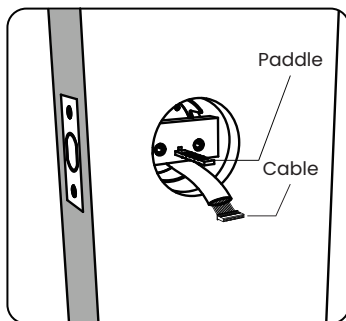
How to Install the Lock



1. Fix the deadbolt with 2 deadbolt screws **i** and keep it retracted.



2. Attach the exterior lock **a** to the front rubber pad and secure it onto the door.

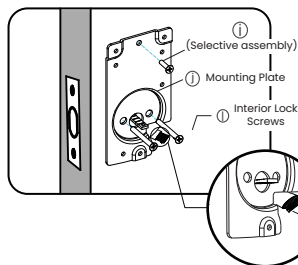


3. Make sure the paddle is slid through the deadbolt and the cable threaded through the door hole.

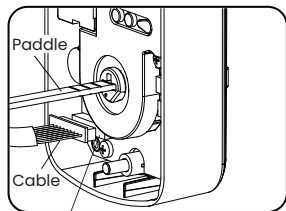
NOTE:

1. Route the cable below the deadbolt.
2. Deadbolt must be in unlock position, and the paddle must be in 'horizontal' status.

How to Install the Lock



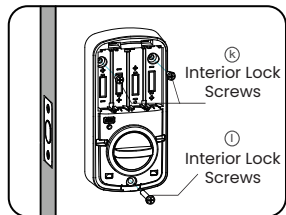
4. Peel the tape off the mounting plate and ensure the cable through the door is positioned near the mounting plate (1). Then, fix the exterior lock with 2 screws (1); you can fix screw (1) selectively.



5. Insert the cable to the wire connector and make sure it is properly and securely installed. Insert the paddle into the hole at the back of the thumb turn.

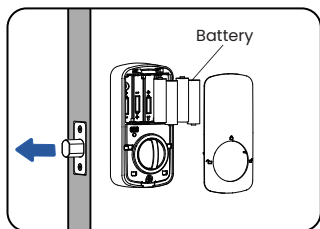
NOTE:

When pressing the indoor panel against the door, try to conceal the wires inside the door or place them in the designated wire-housing areas on the indoor panel.



6. Open the battery cover. Fix the back body to the mounting plate with 3 screws.

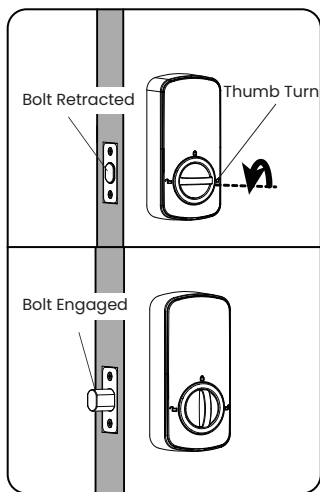
How to Install the Lock



7. Place the batteries in position and close the battery cover

NOTE:

Insert AA batteries into the interior assembly while the door is locked.



8. How to set the direction of the lock

This lock requires deadbolt engaged to identify the open direction. Please make sure the deadbolt is engaged after installation.

NOTE:

If the deadbolt is retracted, a red light will flash, accompanied by a sound alarm to indicate that the lock's opening direction is not set. Please rotate the thumb turn to engage the deadbolt and set the opening direction.

How To Use

Low Battery Alarm

6 short beeps and red light flashing 6 times.

Lockout for Incorrect PIN

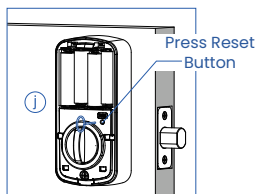
After 3 unsuccessful PIN code entries, a light will flash accompanied by an alarm. The keypad will be locked for 180 seconds.

Reset Lock

Press the reset button for 3 seconds. There will be 1 long beep and blue light flashing once, then 3 short beeps and red light flashing 3 times.

After Reset

The lock will be restored to its factory default settings, reverting the Master PIN code to 123456 and erasing all User PIN codes and User fingerprints.



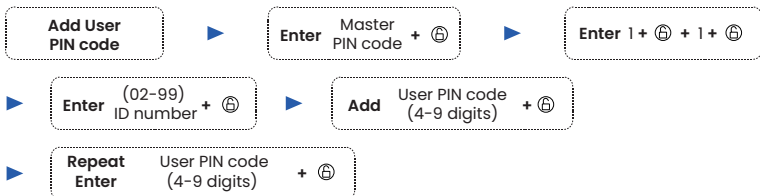
Change Master PIN code

The factory default Master PIN code is 123456. Please change the Master PIN code when you receive the lock.



Add User PIN code (98 user PIN codes can be set)

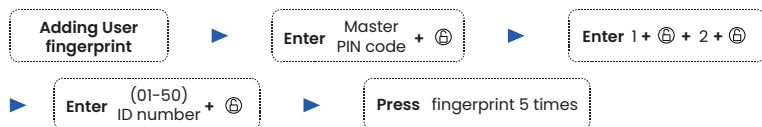
To add a new user Pin code (you can add up to 98 new user PIN codes).



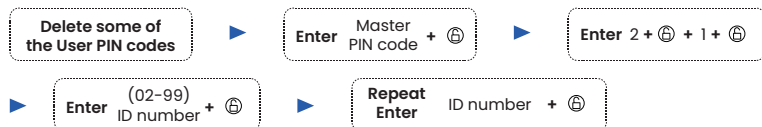
How To Use

Adding User fingerprint

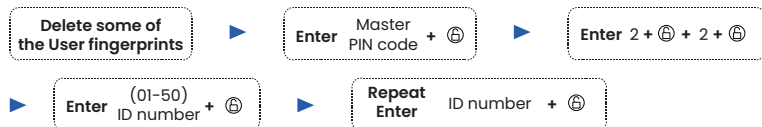
To add a new user fingerprint (you can add up to 50 new user fingerprints).



Delete some of the User PIN codes

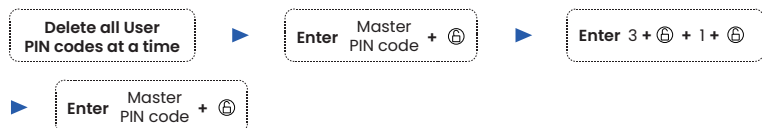


Delete some of the User fingerprints



Delete all User PIN codes at a time

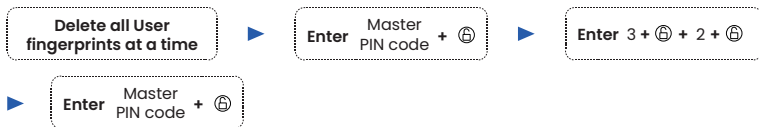
This will delete the user PIN code but not the master PIN code.



How To Use

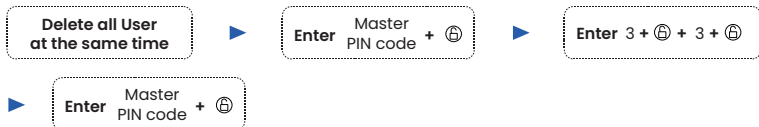
Delete all User fingerprints at a time

This will delete all User fingerprints.



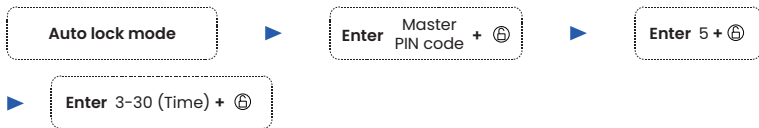
Delete all User PIN codes and all User fingerprints at the same time

This will delete all User PIN codes and User fingerprints but not the Master PIN code.



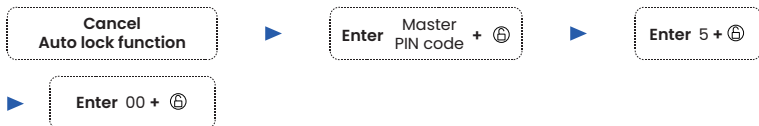
Auto lock mode

The lock will be locked automatically for a certain duration.



Cancel Auto lock function

This programming will keep the door open all the time.

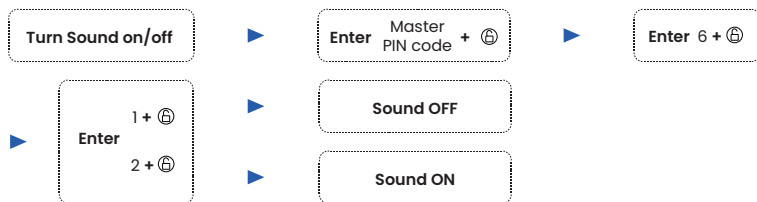


NOTE: You can press “Ⓜ” to lock the door.

How To Use

Turn Sound on/off

You can "mute" or "unmute" your lock by entering the following (the feature is on by default).



NOTE: When the lock is muted, you won't hear any beeping for programming, low battery alerts, or system alerts.

Light and Sound indication

Event	Lock Response
Unlock/Correct Setting	1 short beep and blue light flashing
Lock	2 short beeps and red light flashing
Incorrect Entry/Operation Error	1 short beep and red light flashing
Wrong PIN Code Entry 3 Times	3 long beeps and red light flashing 3 times
Low Voltage	6 long beeps and red light flashing 6 times
Power On	1 long beep and 3 short beeps, and then blue light flashing
Latch Alarm	When the door is not completely closed, the lock will continuously make two long beeps and flashing red LED for reminding

DESLOCTM



www.desloc.com



+1 (888) 572 6136



support@desloc.com



12-month warranty