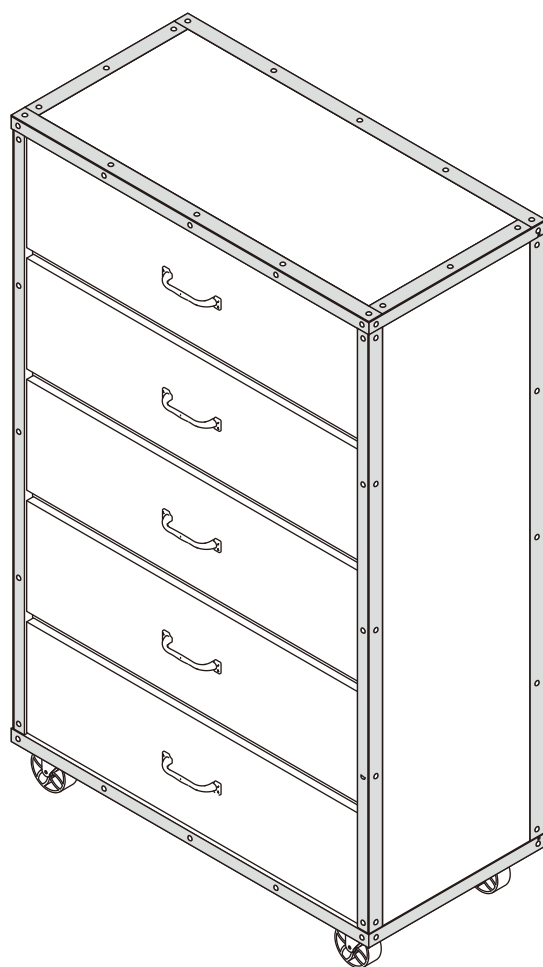
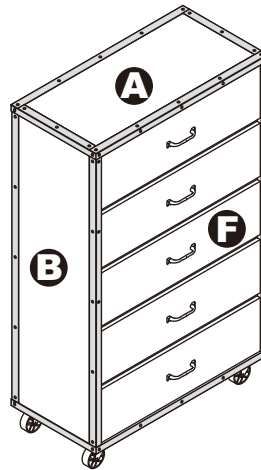


# ASSEMBLY INSTRUCTIONS



## 5-DRAWERS CHEST

# 5-DRAWERS CHEST

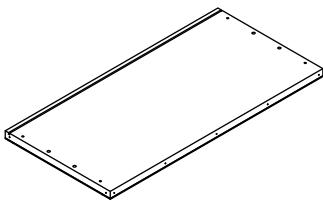


## DIMENSIONS

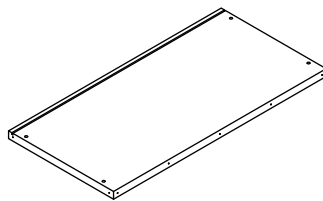
Width - 31.3"  
Depth - 16.2"  
Height - 50.9"

## PARTS LIST

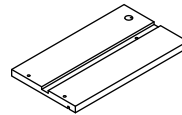
**A** X1



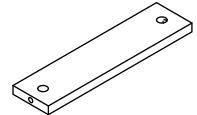
**D** X1



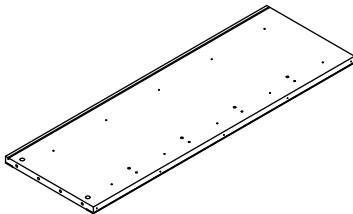
**G** X5



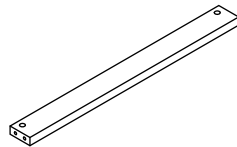
**J** X5



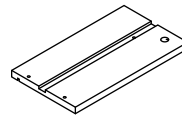
**B** X1



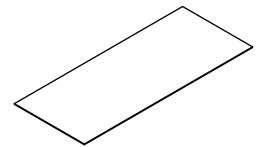
**E** X4



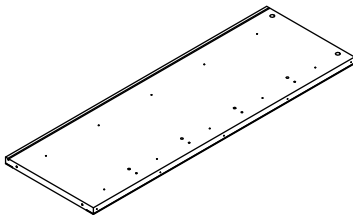
**H** X5



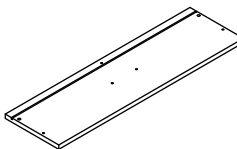
**K** X5



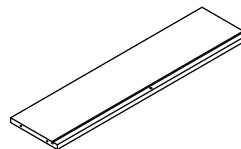
**C** X1



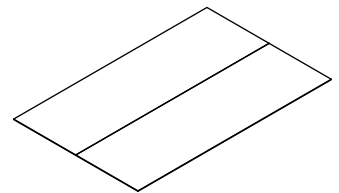
**F** X5



**I** X5



**L** X1



## HARDWARE LIST

**1** X32



**2** X32



**3** X22



**4** X20



**5** X4



**6** X10



**7** X20



**8** X10



**9** X4



**10** X16



**11** X5



**12** X10



**13** X6



**14** X6



**15** X64



**16** X1



**17** X1

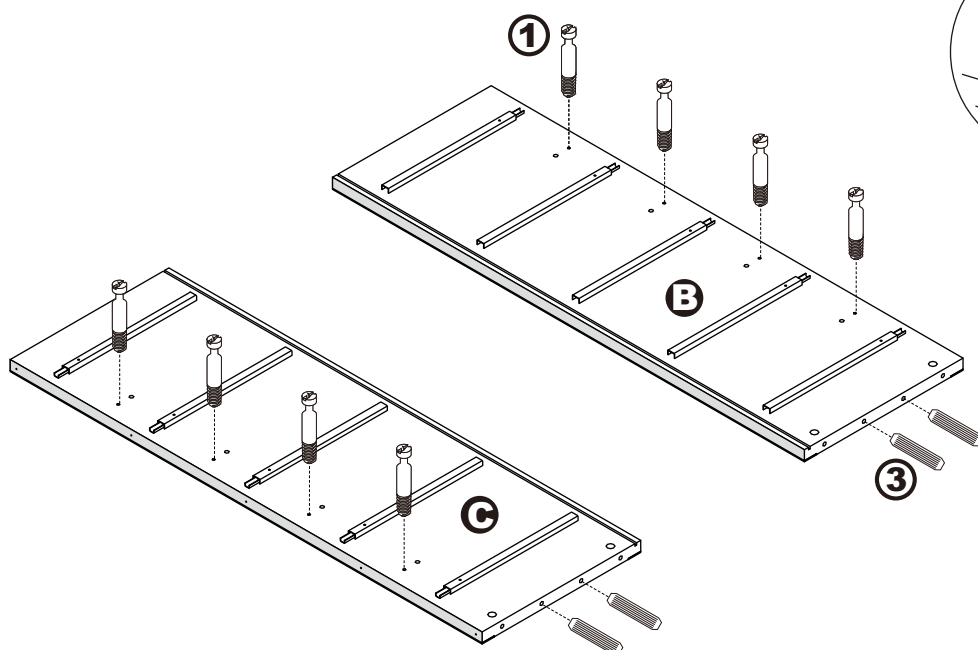
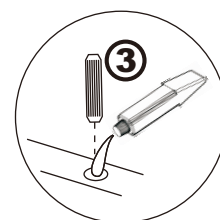
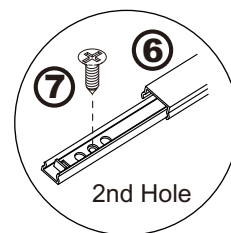
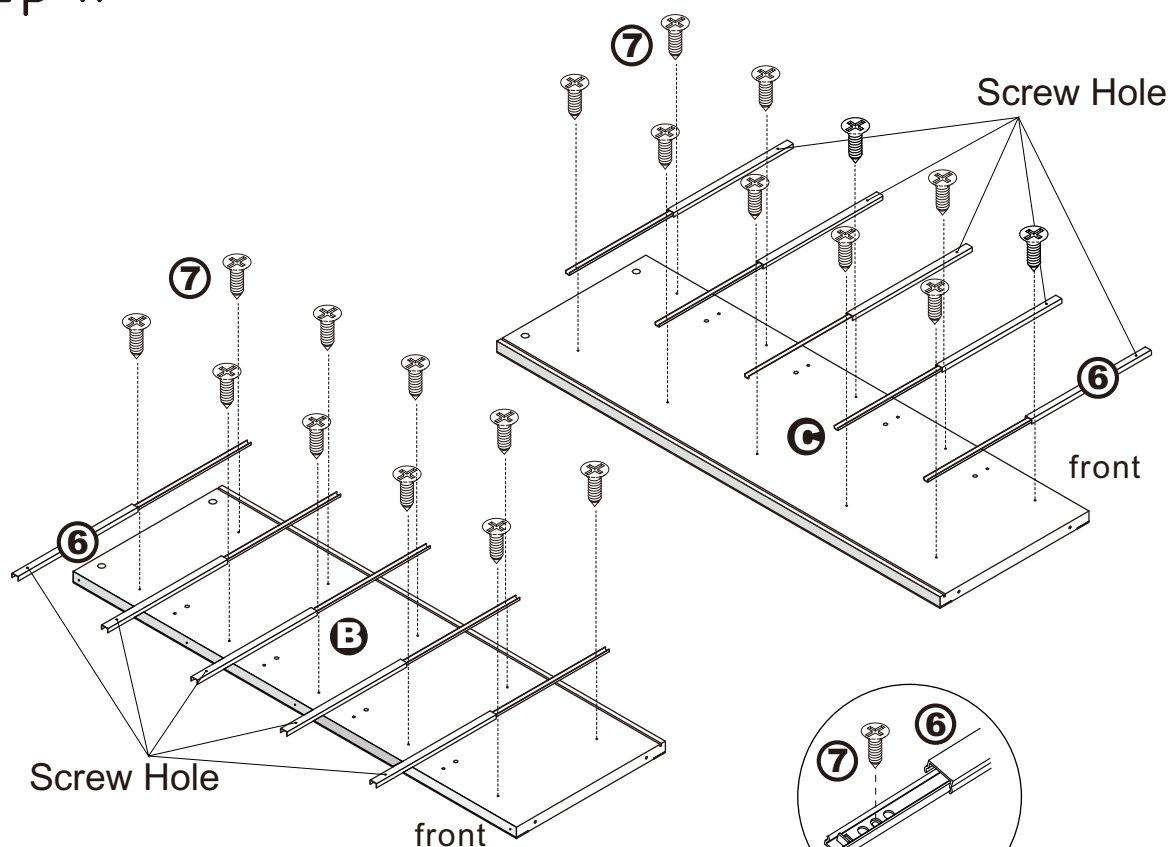


**18** X2



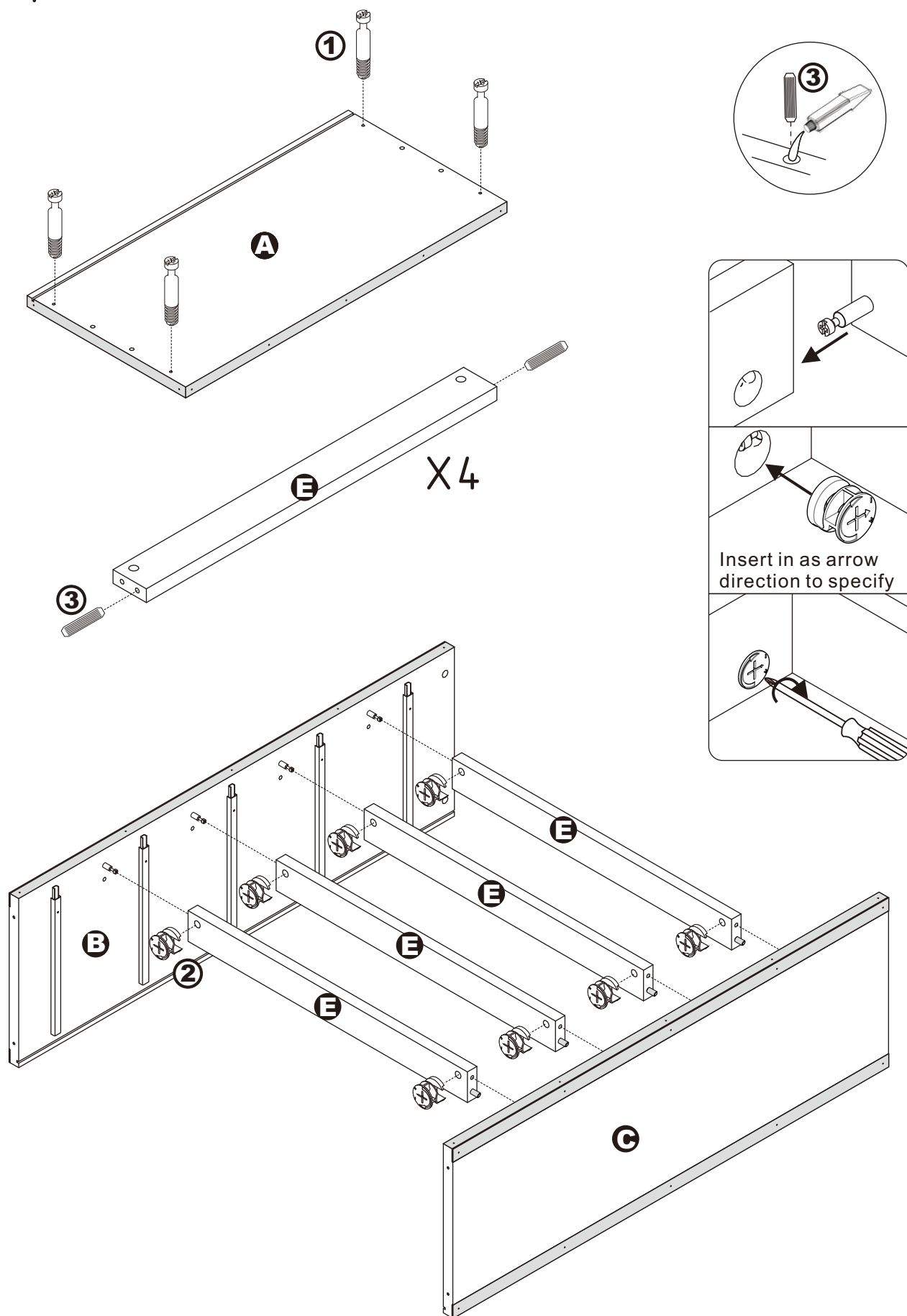
# ASSEMBLY INSTRUCTIONS

## Step 1.



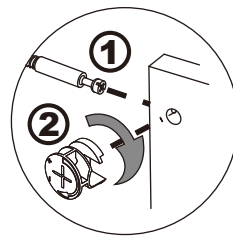
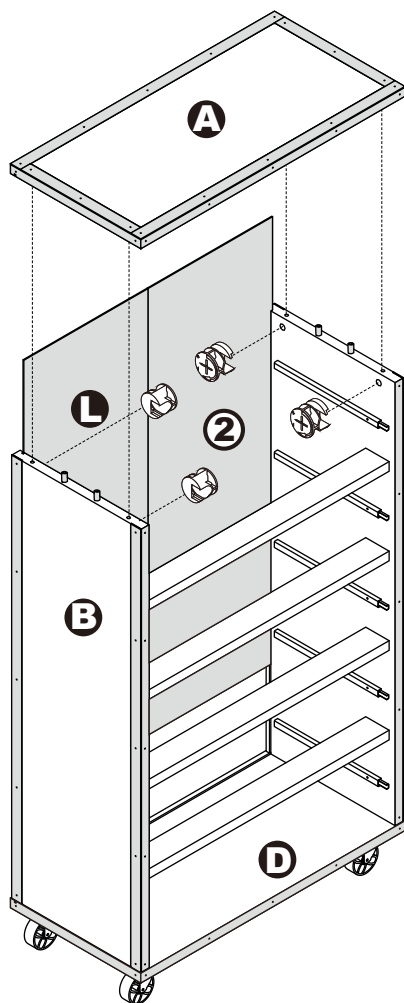
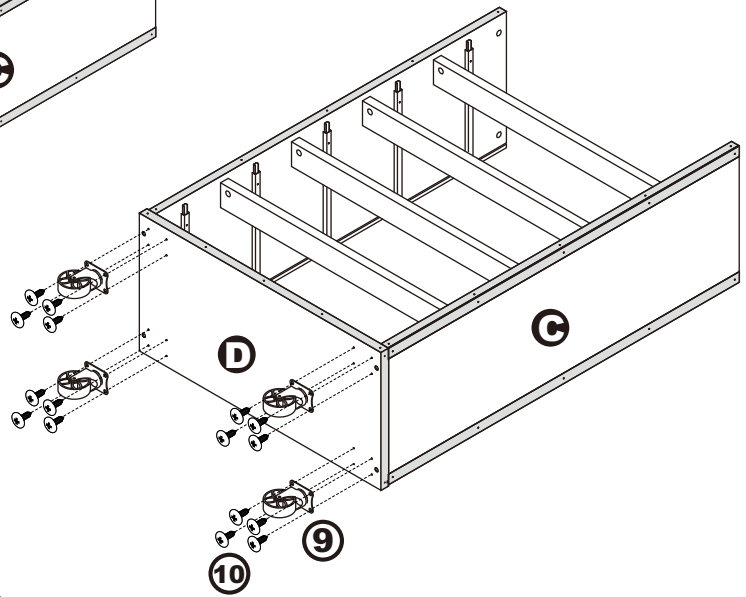
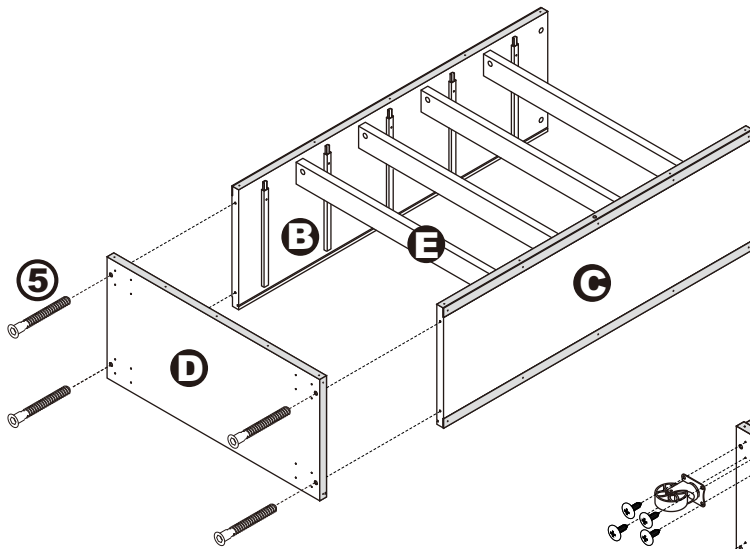
# ASSEMBLY INSTRUCTIONS

## Step 2.



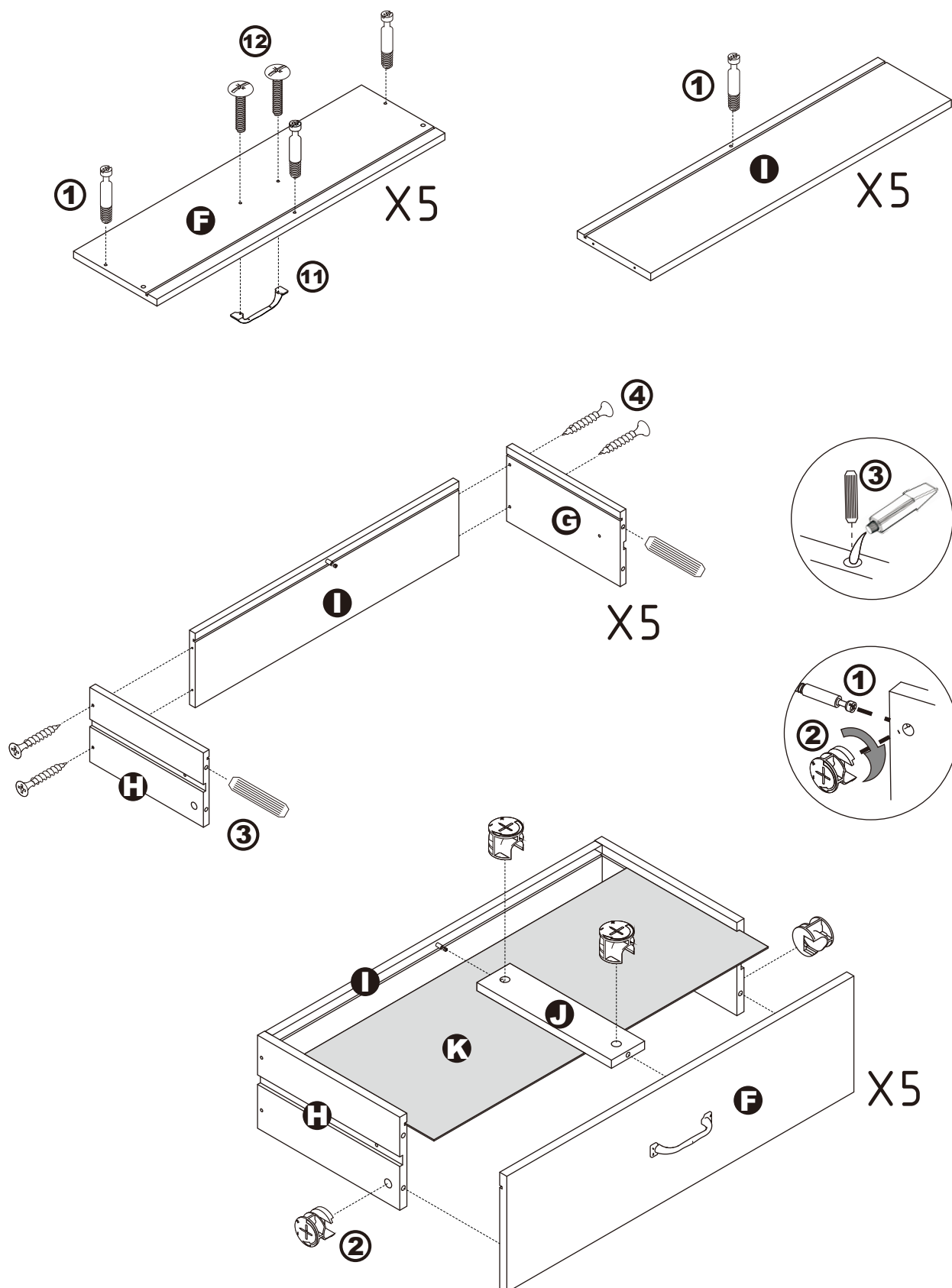
# ASSEMBLY INSTRUCTIONS

## Step 3.



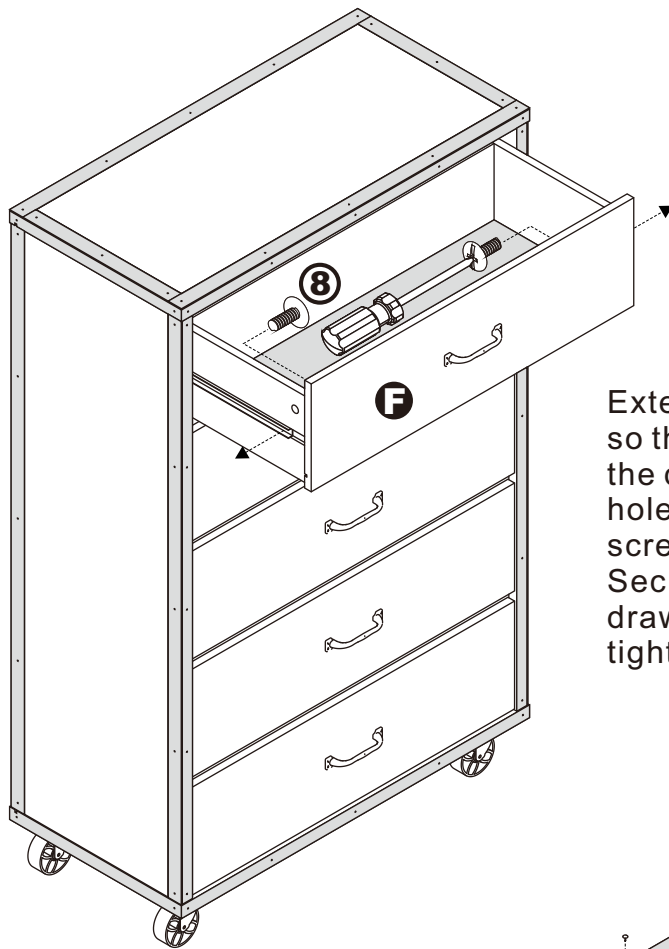
# ASSEMBLY INSTRUCTIONS

## Step 4.

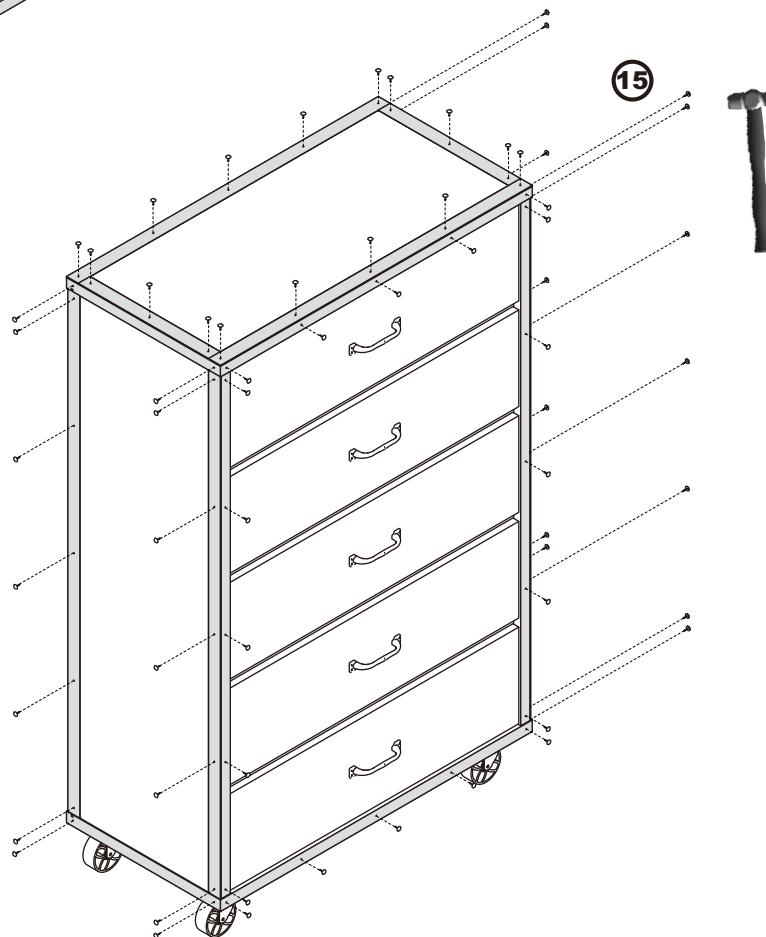


# ASSEMBLY INSTRUCTIONS

## Step 5.

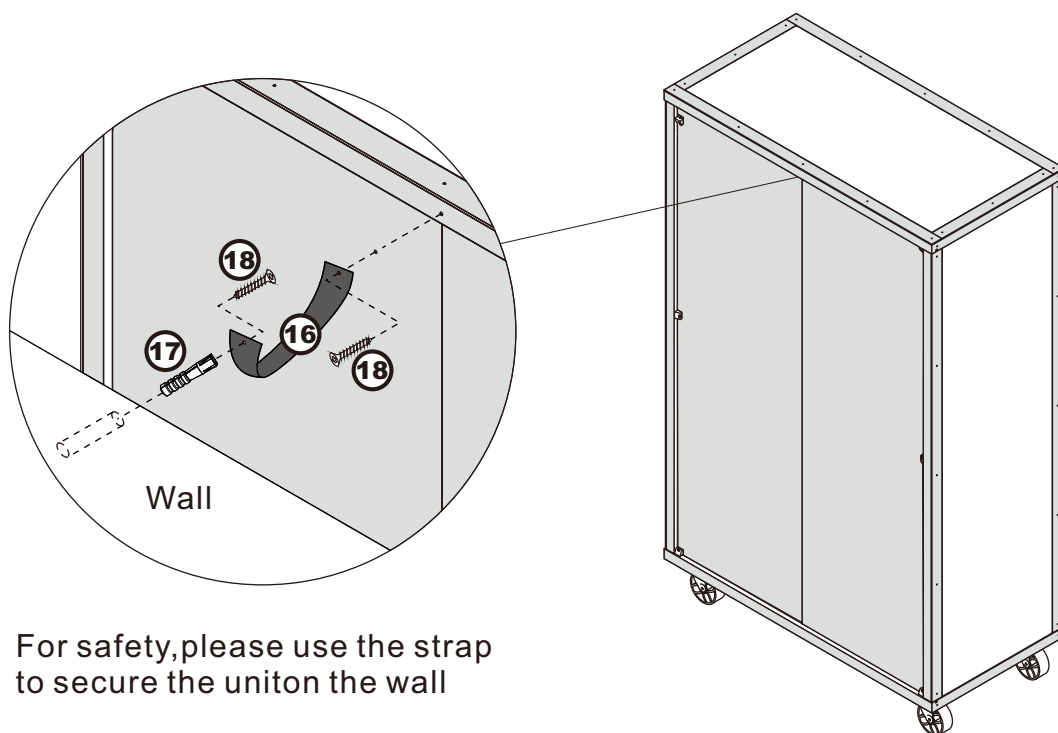
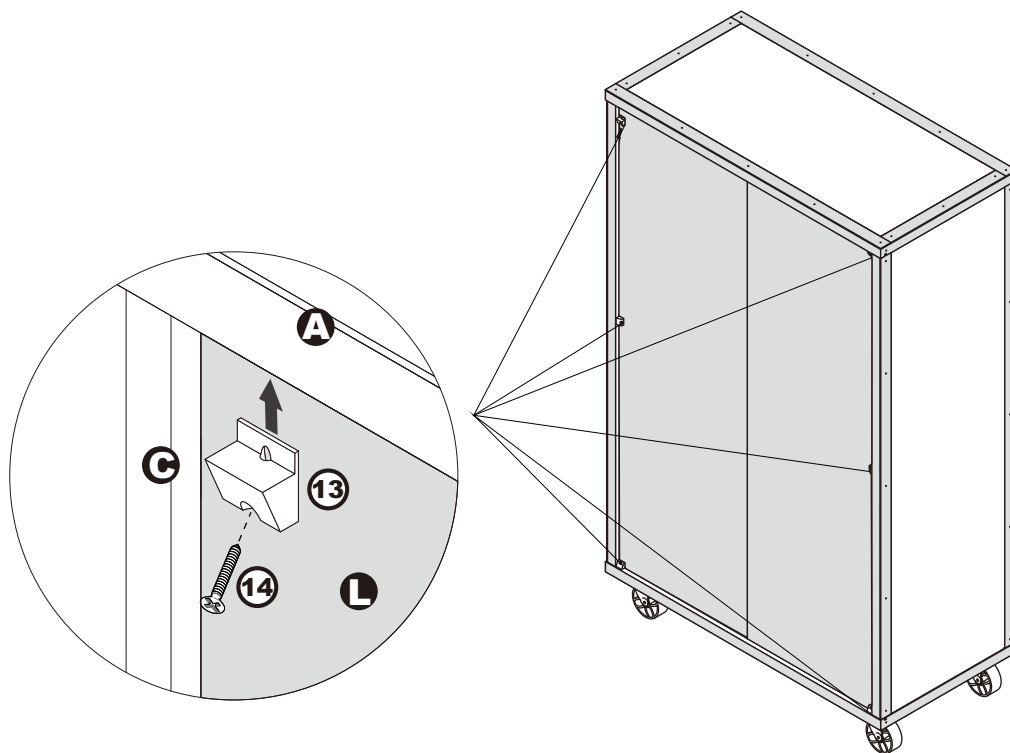


Extend the two outer slides of the runners so that they could align with the sides of the drawer. Make sure the pre-drilled holes from the drawer align with the screw holes of the outer slides. Secure two screws from the inside of the drawer using a Phillips screwdriver to tighten them to the outer slides.



# ASSEMBLY INSTRUCTIONS

## Step 6.



For safety, please use the strap to secure the unit on the wall

## ASSEMBLY IS COMPLETED

Make sure the product is rested on a flat surface and does not feel loose or wobbly. If it does, double check that the bolts/screws are secured and properly tightened.