

ASSEMBLY INSTRUCTION

IMPORTANT

Multiple boxes shipped, may not arrive at the same time, please make sure you receive all packages before installation!

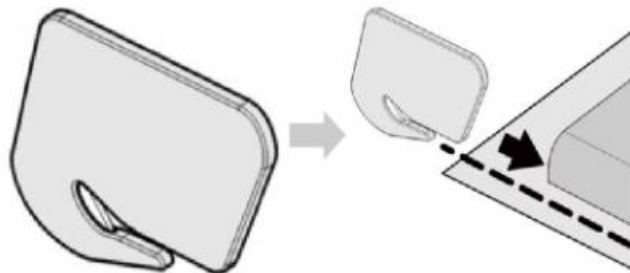
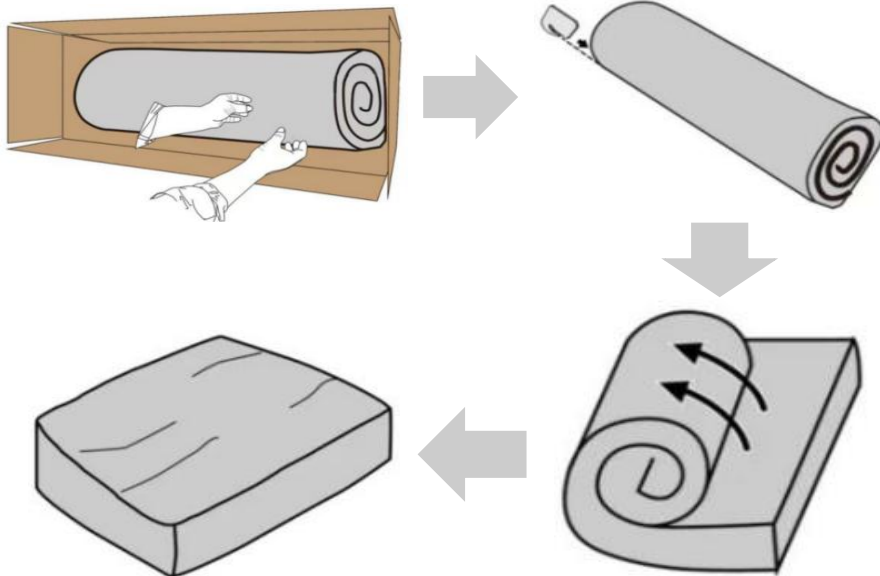
Tips Of Restoring Vacuum-Compressed Sofa:

1. **Unpack:** Take it out of the box, then use the included tool to safely open the sealed bag.

2. **Allow Expansion Time:** Let the sofa sit in a well-ventilated area for a few hours to expand naturally. It usually takes 48-72 hours to fully expand.

3. **Fluff and Pat:** Gently fluff and pat the sofa to encourage air circulation and restore its shape.

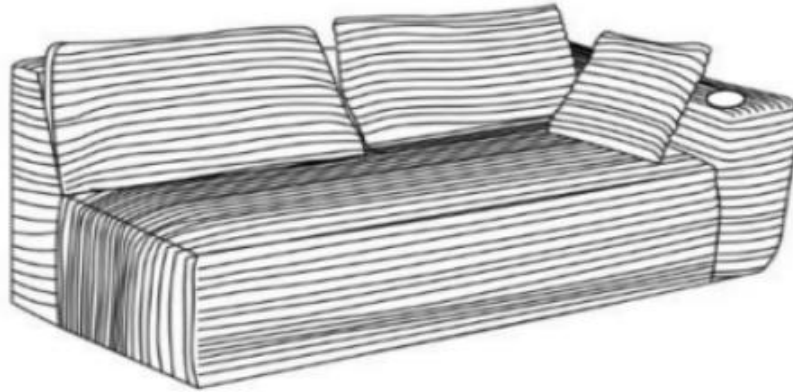
4. **Massage and Knead:** Lightly massage and knead the sofa to redistribute the filling evenly.



The tool is in Box 2, use it to safely open the vacuum bag!

Right Chaise Longue Sofa Module Diagram

After opening the vacuum packaging, the two main sofa modules will be as shown in the following figure.



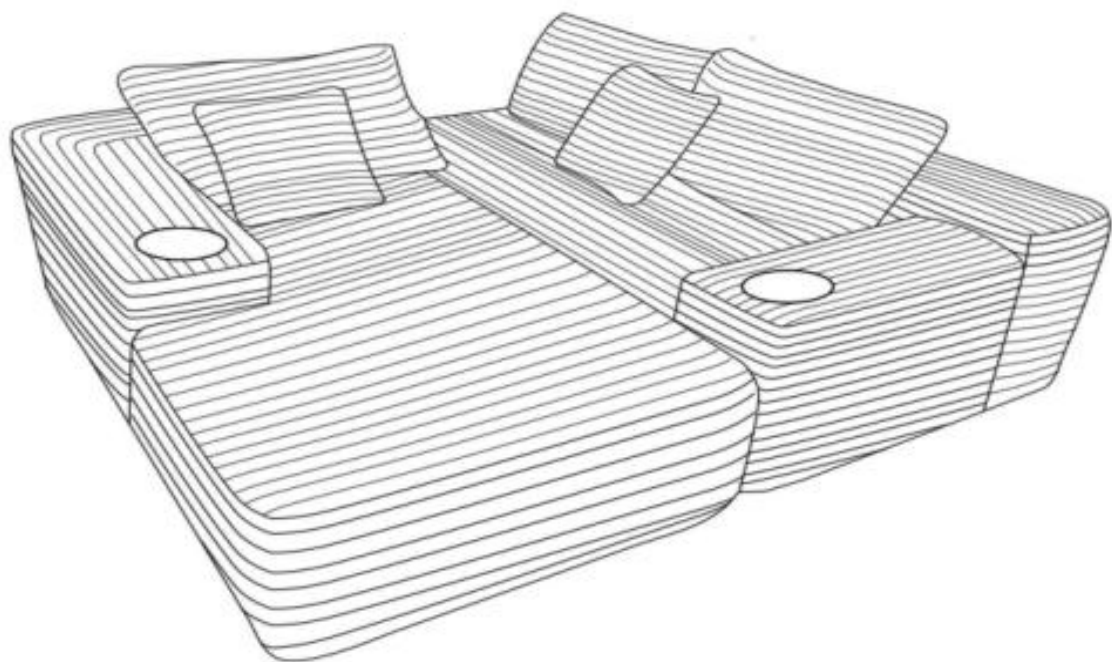
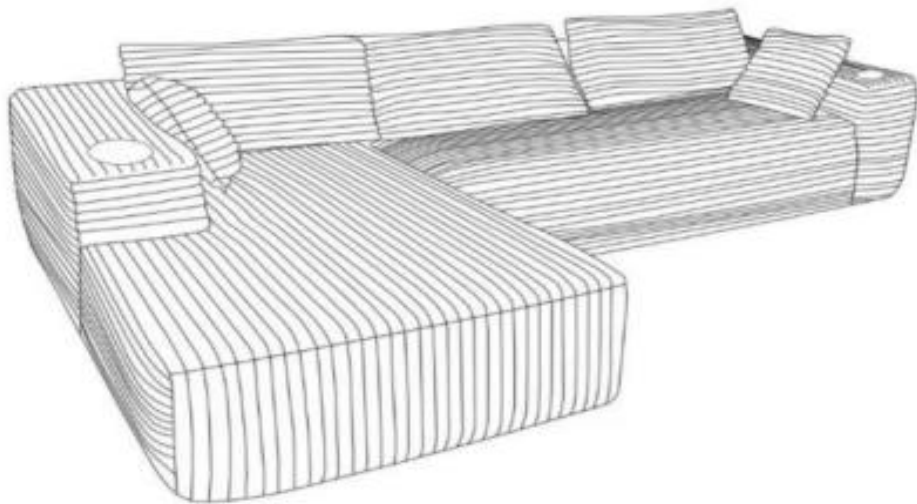
BOX 1: Loveseat



BOX 2: Right Chaise

Right Chaise Sofa Combination Diagram

Free Combination As You Want!

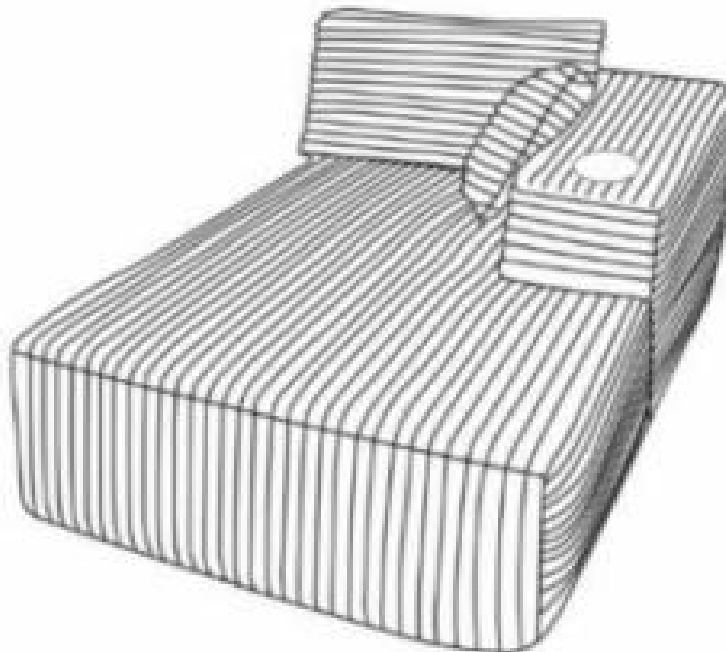


Left Chaise Sofa Combination Diagram

After opening the vacuum packaging, the two main sofa modules will be as shown in the following figure.



BOX 1: Loveseat



BOX 2: Left Chaise

Left Chaise Sofa Combination Diagram

Free Combination As You Want!

