






Installation Guide

Important information BEFORE starting the installation.

-  Allow at least 30 days prior to installation for recently painted walls.
-  Do not peel entire backing off at once.
-  Apply the wallpaper immediately after unrolling. If not, roll back until you are ready.
-  Ensuring your wall surface is smooth and free of imperfections will make your mural look its best.
-  Some walls are not straight so make sure you start applying the wallpaper a little bit above the top of the wall. This will give you a little room to play with wallpaper alignment.

GETTYNG READ

Necessary materials: A sharp, blade or cutting blade (such as box cutter), extra blades, a squeegee, and both, a damp and dry cloth.

Tip: Invite a friend...hanging wallpaper is a two-person job so you could use a hand ... and share the fun.



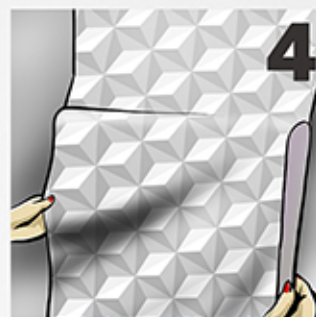
Use a damp cloth to clean the surface. Dry moisture with a dry cloth. Allow time for drying and make sure it is 100% dry prior to starting the application. **DO NOT USE** any chemicals (alcohol) when cleaning the wall, just a damp warm rag, and dawn soap if needed.



Place the wallpaper face-down on a flat surface. Pull the liner down about 6" and cut the liner. Start applying wallpaper from the top corner of the wall. Panels should be applied vertically as shown. **NOT** horizontally. Stick a little above the top of the wall. Do not trim any part of the material until done applying all panels.



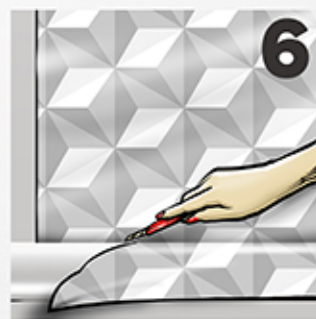
Use a squeegee to smooth out the paper as you go. Remember to smooth from the center outwards. If wrinkles or bubbles appear simply peel back and reapply that section.



Once you have applied the first 6" repeat the process until reaching the bottom of the wall. Please do not try to stretch the material as it may cause bubbles to appear. You can peel and stick as many times as you want, but do not pull the material.



Repeat steps 2 to 5 with the remaining panels. This time be sure to match the design. Make sure you are overlapping panels about 1/2 inch when matching the design, otherwise the print will not match.



ONLY after applying wallpaper to all of the walls, trim excess wallpaper on the top and bottom of each wall using a sharp blade. That way if you make a mistake you can still fix it before cutting it.