

Installation Instructions

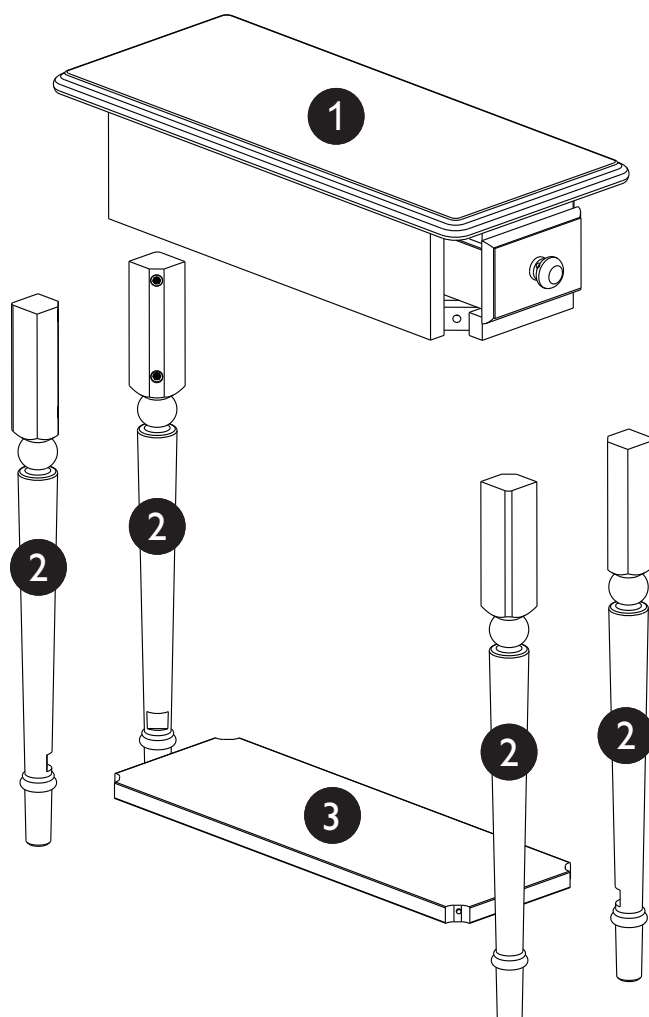
Coastal Narrow Side Table

Thank you for choosing our product for your home. **Please read carefully and save these instructions, as you may need them at a later date.**



PARTS INCLUDED

Please confirm all parts are available before starting assembly.



HARDWARE INCLUDED

Please confirm all hardware available before assembly.



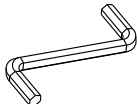
Ref.		Qty.
A	 Bolts 1/4 x 40 mm	8
B	 Screw ø4,5 x 35 mm	4
C	 Hex Key	1

Figure 1

Place the top assembly upside down and remove the dowels, and then pull out the drawer.

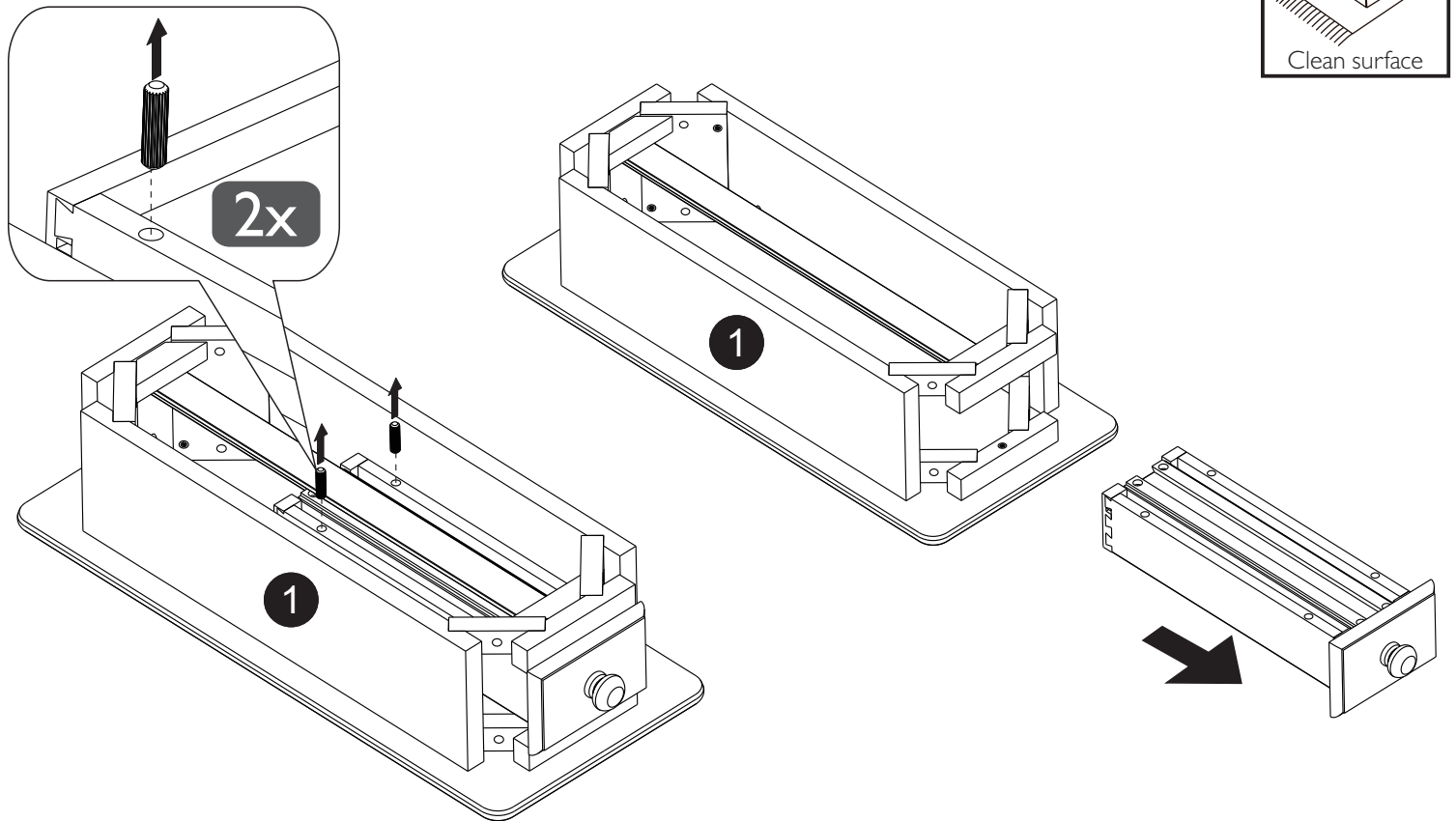
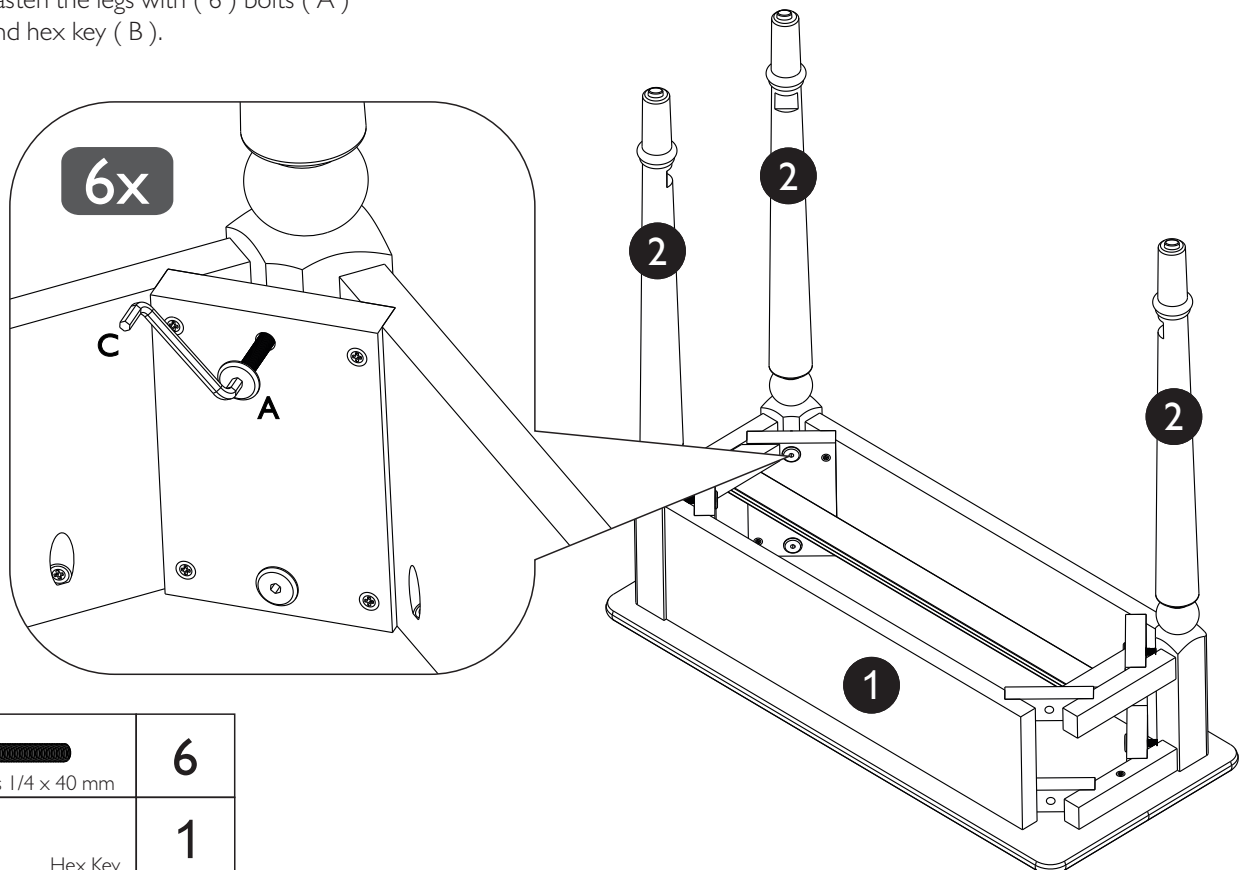
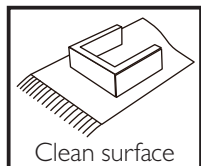


Figure 2

Fasten the legs with (6) bolts (A) and hex key (B).




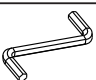
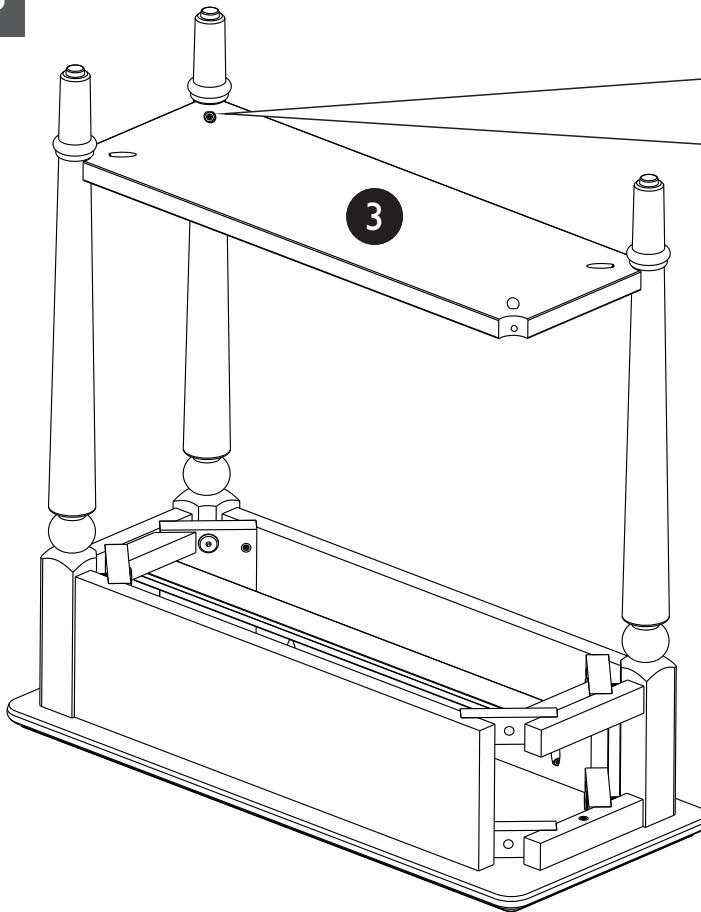
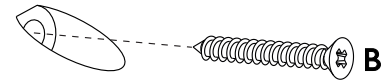
A		6
Bolts 1/4 x 40 mm		
C		1
Hex Key		

Figure 3



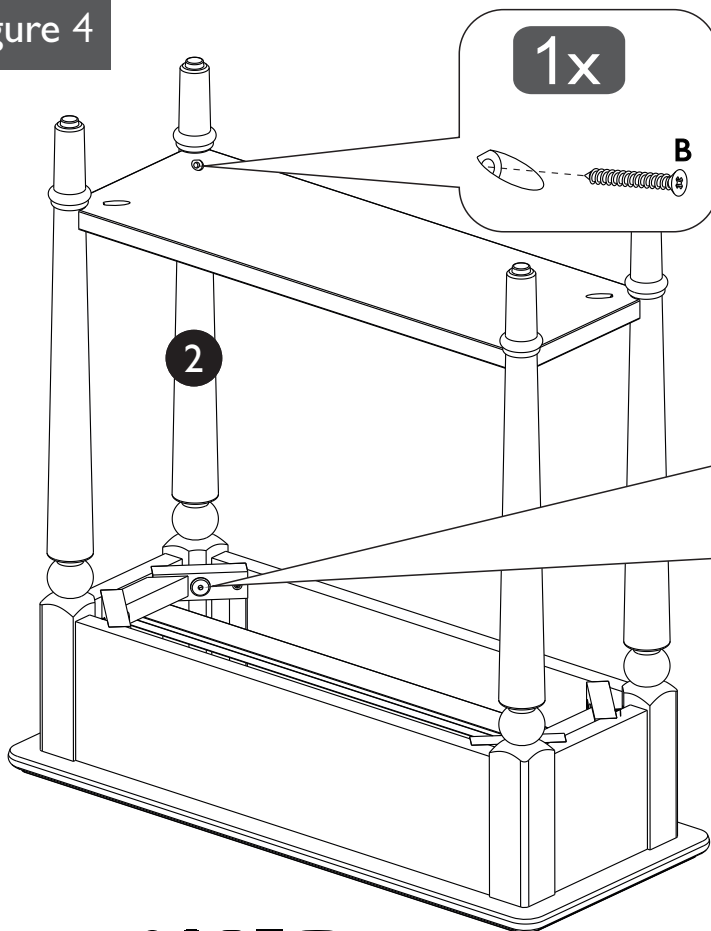
3x



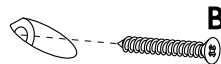
Fasten the shelf to the legs with (3) screws (B).
Ask for another set of hands to help hold the shelf while the bolts are inserted.

B		3
Ø4,5 x 35 mm		

Figure 4

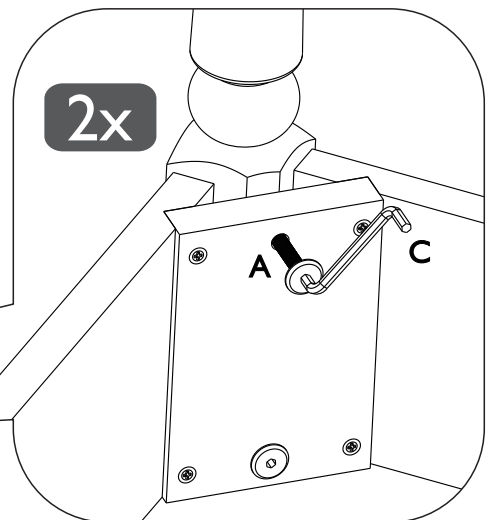


1x



Fasten the leg with (2) Bolts (A) and hex key (C).
Fasten the shelf to the leg with (1) screw (B).

2x



A		2
Bolts 1/4 x 40 mm		
B		1
Ø4,5 x 35 mm		
C		1
Hex Key		

Figure 5

Place the drawer in the cabinet and insert the dowels into the holes to lock the drawer

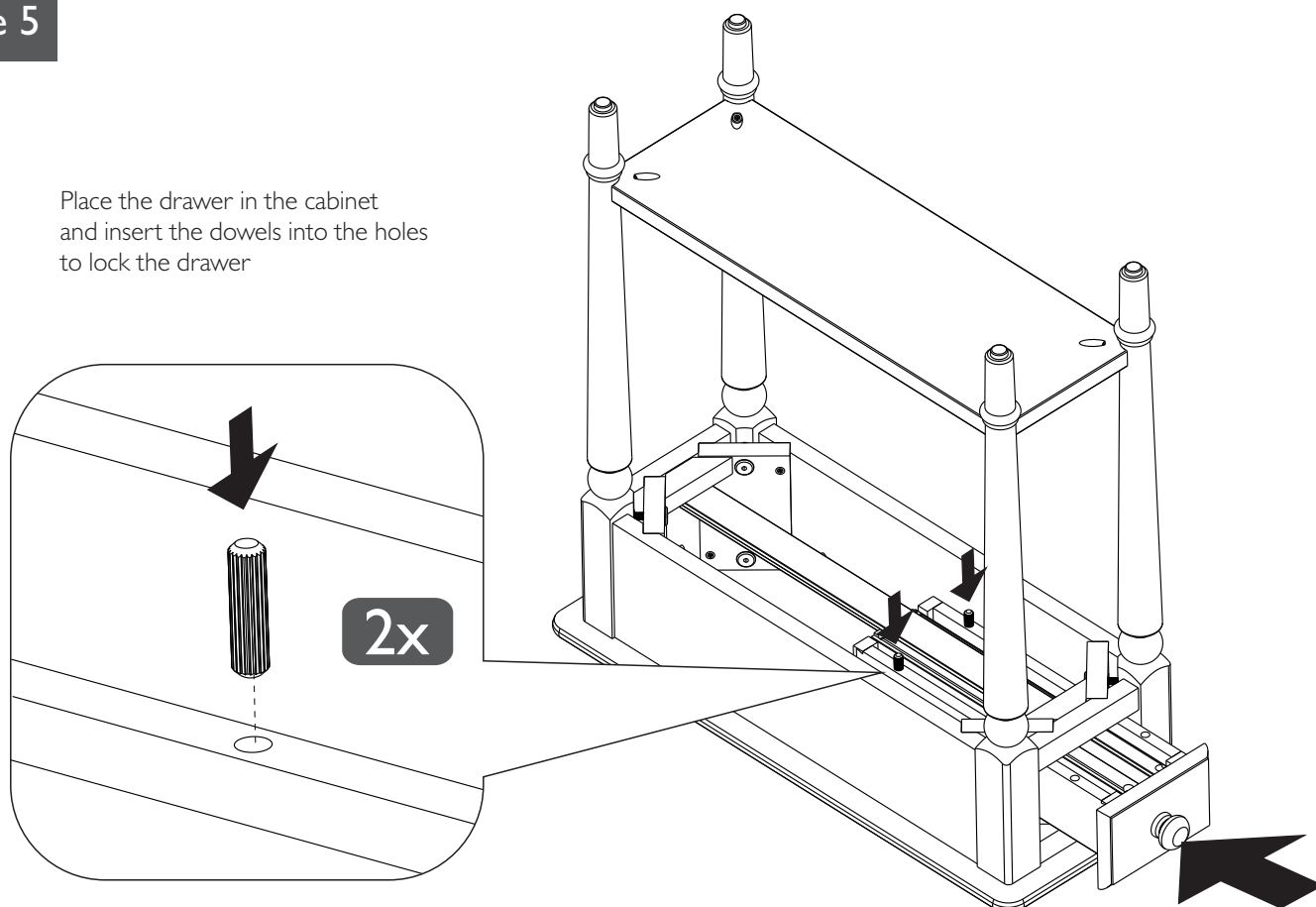


Figure 6

