

DATE: 9-MAY-2023

ASSEMBLY INSTRUCTIONS Nook Dining Table ITEM# 40096

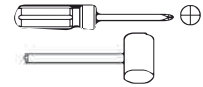
ASSEMBLY
REQUIREMENTS:

2-Person
Assembly

30 Minutes
Assembly Time
(Approximate)

Tools Required:
(Not Provided)

Phillips Screwdriver
Hammer/Mallet



Thank you for purchasing our product!

Please refer and use this assembly instruction to assemble the product. Contact our customer service department in case there are any missing or damage parts or hardware. Replacement parts are normally shipped within 2 or 3 days.

Email: replacementparts@buylateral.com
Within 30 days from delivery date

We appreciate your business!

PRODUCTS PURCHASED THROUGH OUR AUTHORIZED VENDORS ONLY ARE ELIGIBLE FOR REPLACEMENT PARTS.

THIS PRODUCT IS FOR INDOOR AND HOUSEHOLD USE ONLY-NOT FOR COMMERCIAL USE.



ASSEMBLY PREPARATION

1. Remove all packaging materials, staples and packing straps from the carton.
2. Refer to Parts List and Hardware List and ensure they are complete before you start assembling.
3. Place all wooden parts on a clean, flat and soft surface (e.g. carpet or rug) to prevent parts from getting scratched.

SAFETY PRECAUTION:

1. KEEP ALL HARDWARE PARTS OUT OF REACH OF CHILDREN.
2. DISPOSE PLASTIC PACKAGING MATERIAL IMMEDIATELY TO AVOID ANY RISK OF SUFFOCATION TO CHILDREN AND ANIMALS.

TIPS FOR ASSEMBLY:

1. Allow ample room for assembly and in close proximity to where product will be placed.
2. Assemble the product on a surface that does not scratch or damage the exterior gloss and finish of the furniture.
3. Please check all of the parts and quantities are included before assembly. Contact customer service for missing parts.
4. Identify all of the parts, hardware and quantities required for each step.
5. During assembly, do not over-tighten any fittings as this may cause damage.
6. DO NOT USE POWER TOOLS TO ASSEMBLE THIS PRODUCT.
7. Always place the product on a flat surface.
8. Do not sit or stand on the partially assembled product; only use the product for which it is intended.

CARE AND MAINTENANCE

- Wipe clean with a soft, dry cloth; avoid the use of harsh chemicals or household cleaners as they may damage the exterior finish of the furniture.
- Hardware may loosen over time. Periodically, check that all connections are tight; re-tighten as necessary.
- Solid wood is impacted by heat and humidity fluctuations which may cause small joint separations or hairline cracks; place the furniture away from direct sunlight and air conditioning vents, heating vents or units to protect the furniture.

Made In China

Instructions For Fastening CAM-BOLT and CAM-LOCK



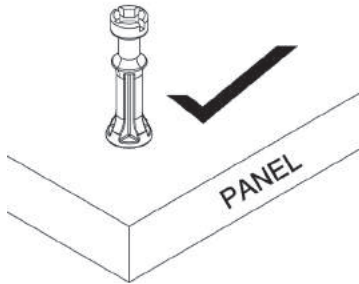
CAM-BOLT



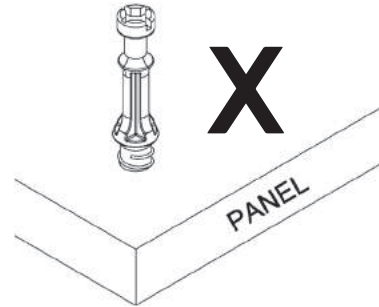
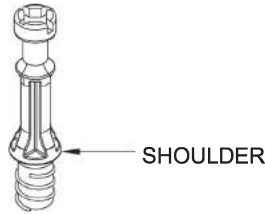
CAM-LOCK

INSERTING AND TIGHTENING CAM-BOLT

Insert Cam-bolt into the pre-drilled hole. Use a Phillips Screwdriver to tighten until shoulder is snug and flushed with the panel. See illustrations below.



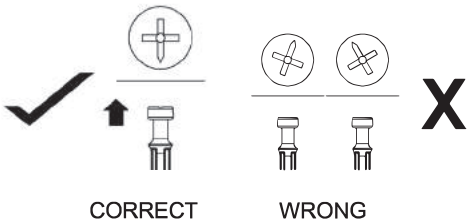
Shoulder is flushed (on the same level) with the panel.



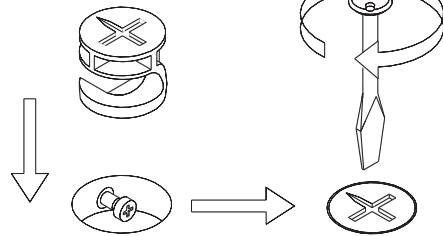
Shoulder is above the panel.

INSERTING CAM-LOCK

Align the arrow on the Cam-lock to the Cam-bolt head and insert the Cam-lock.



TIGHTENING CAM-LOCK

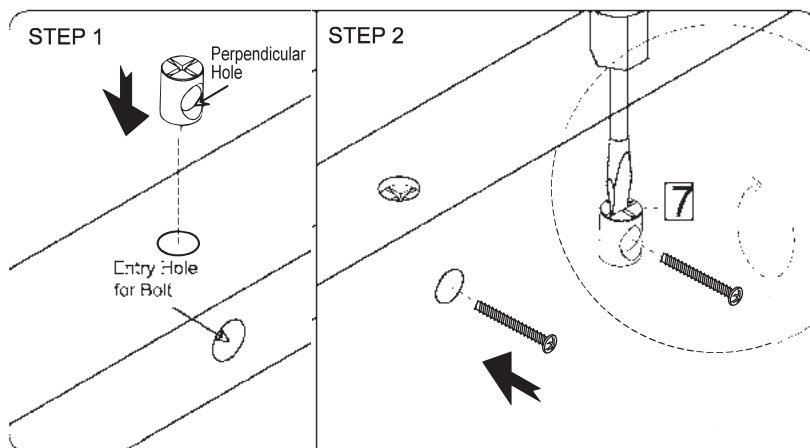


Cam-bolt head needs to be in center

Use a Flat-head Screwdriver to turn the Cam-lock clockwise one half a turn to lock onto the head of the Cam-bolt. Turn until it is snug -- over-tightening could damage Cam-lock or/and Cam-bolt

Instructions For Installing Barrel Nut

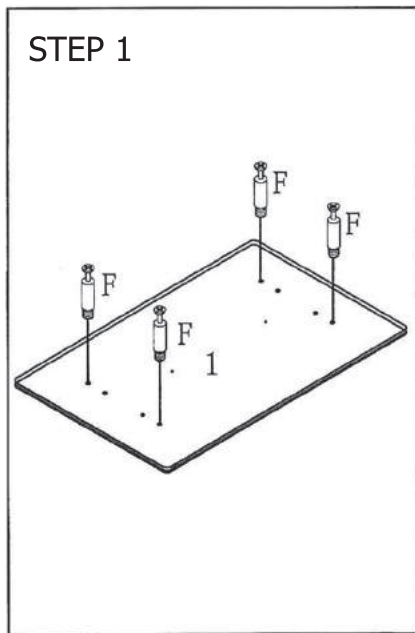
Insert Barrel Nut with the perpendicular hole facing and in-line with the drill hole that the bolt is to be inserted.



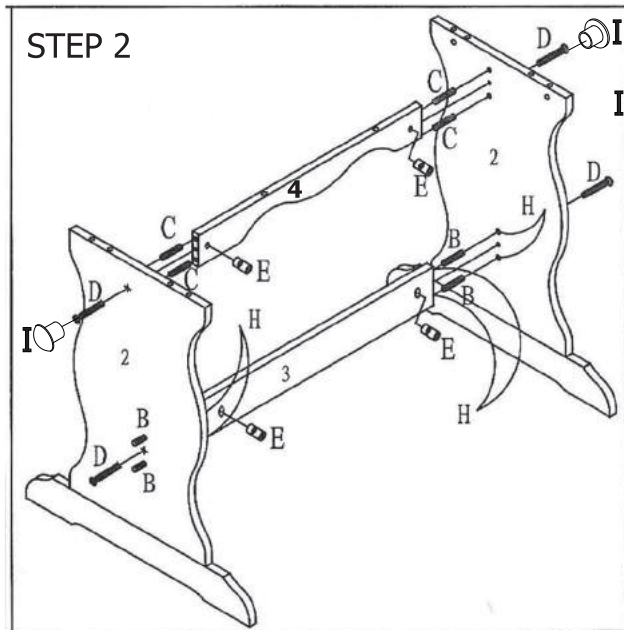
Use a Flat-head Screwdriver to hold Barrel Nut in position before inserting bolt to thread into the Barrel Nut.

ASSEMBLY INSTRUCTIONS

Nook Dining Table ITEM# 40096



Place Table Top (1) bottom-side up and identify pre-drilled holes for Cam-bolts (F). Screw-in and tighten Cam-bolt (F)



- a) Identify and apply Glue (H) to designated holes for wood dowels at the ends of Lower Stretcher (3) and Upper Stretcher (4). For (3) insert Long Wood Dowel (B) and for (4) insert Short Wood Dowel (C).
- b) Attach (3) & (4) to right Table Side (2) via Wood Dowels (B) & (C) as shown. Note: Wood Dowel (B) will protrude out of Table Side (2).
- c) Insert Barrel Nut (E) to designated holes on (3) & (4).
- d) Insert Screw (D) through (2) to screw into Barrel Nut to fasten (3) & (4) to (2)
- e) Attach and fasten the left Table Side (2) to (3) & (4), and follow the same procedures in c) & d) above.
- f) Cover the screw hole by using Plastic cover(I)

STEP 3

- a) Identify designated holes on top edge of Table Side (2) for Wood Dowels and apply a small amount of Glue (H) and insert Short Wood Dowel (C)
- b) Position Table Top (1) to fit Table Side (2) via Cam-bolts (F) and Wood Dowels (C) respectively.
- c) Insert Cam-lock (G) into designated holes on (2) and turn clockwise to lock onto Cam-bolt.
- d) Use Screw (A) to fasten Table Top (1) to Upper Stretcher (4)
- e) Affix Decorative Cap to Table Side (2) via protruded Wood Dowel (B)

STEP 3

