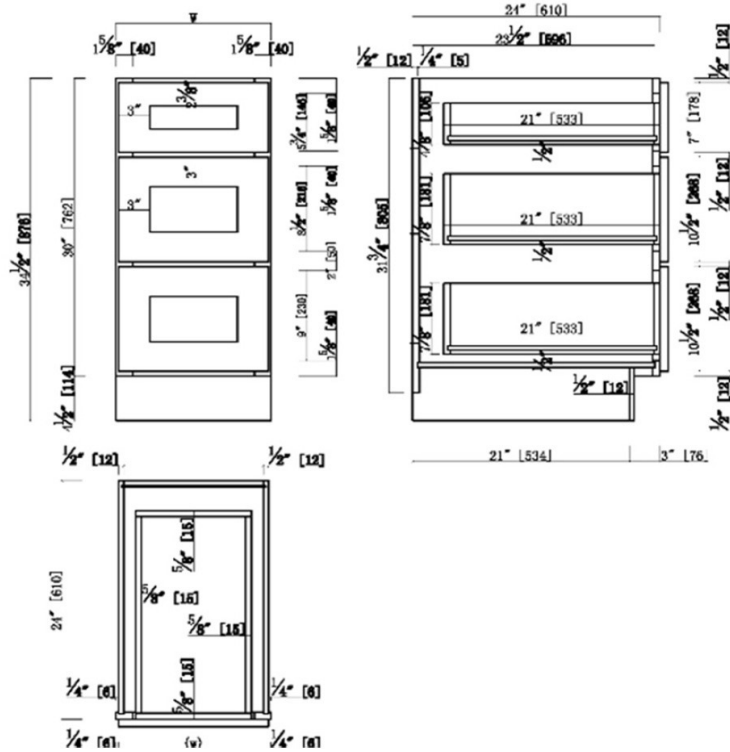


Unassembled Shaker Drawer Base Kitchen Cabinet 18x34.5x24 White



SPECIFICATIONS

MATERIAL CONSTRUCTION:	Wood	NUMBER OF SHELVES:	0
WOOD SPECIES:	Maple	SHELF STYLE:	N/A
ASSEMBLED DIMENSIONS:	34.5" H x 18" L x 24" D	ADJUSTIBLE SHELVES:	N/A
ASSEMBLED WEIGHT:	50.88 lbs.	SHELF ADJUSTIBILITY INCREMENTS:	N/A
KITCHEN CABINET TYPE:	Drawer Base	SHELF DIMENSIONS:	N/A
MOUNTING TYPE:	Floor Mount	SHELF THICKNESS:	N/A
CONSTRUCTION TYPE:	Face Frame	SHELF MATERIAL:	N/A
HINGE STYLE:	N/A	FACE FRAME MATERIAL:	Solid Maple
DOOR STYLE:	N/A shaker door	SIDES MATERIAL:	Plywood
DRAWER DIMENSIONS 1:	4.17" H x 21" L x 14.44" D	BOTTOM MATERIAL:	Plywood
DRAWER DIMENSIONS 2:	7.12" H x 21" L x 14.44" D	BACK PANEL MATERIAL:	Plywood
DRAWER DIMENSIONS 3:	7.12" H x 21" L x 14.44" D	BACK BRACE MATERIAL:	Wood
DWR BOX MATERIAL:	SOLID WOOD	TOE KICK INSET WIDTH:	3"
DWR CONSTRUCTION:	Dove Tail	TOOLS NEEDED FOR INSTALLATION:	Phillips Screwdriver Mallet Wood Glue
DWR GLIDE:	Dove Tail	FASTENER TYPE:	Wood Screw
FAKE DWR QTY:	0		
FAKE DWR LOCATION:	N/A		
WARRANTY:	1-Year limited warranty		
LEGAL FOR SALE IN CALIFORNIA:	Yes		
CARB COMPLIANT:	CARB Phase 2		
TSCA TITLE IV COMPLIANT:	Yes		

