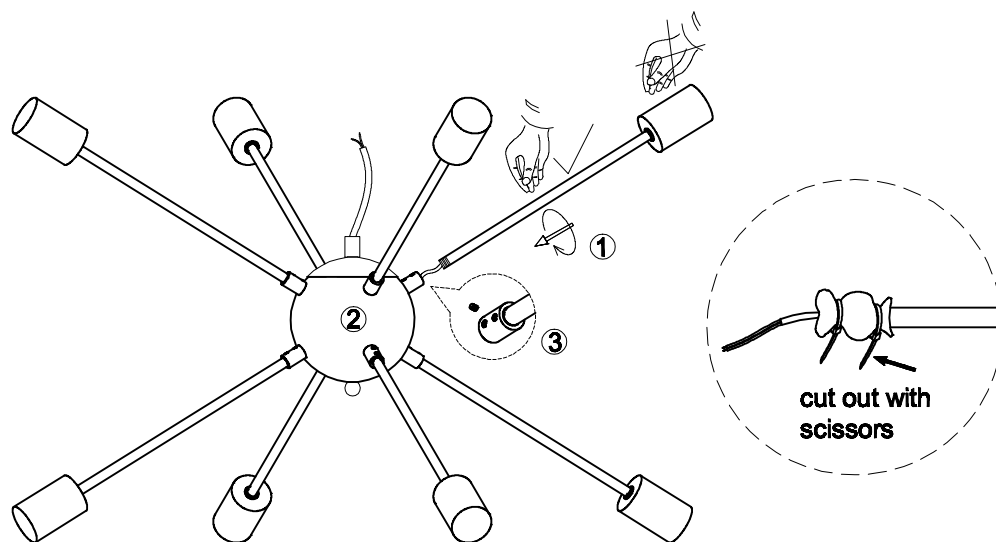
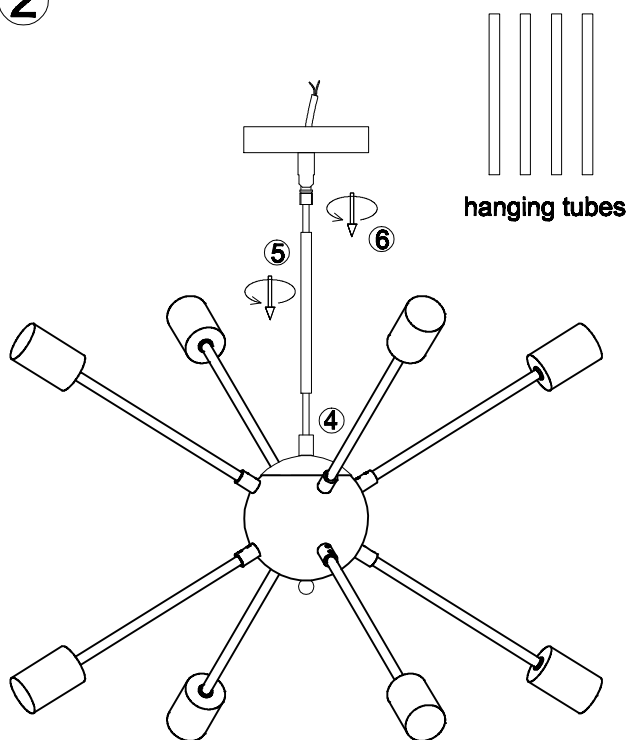


①



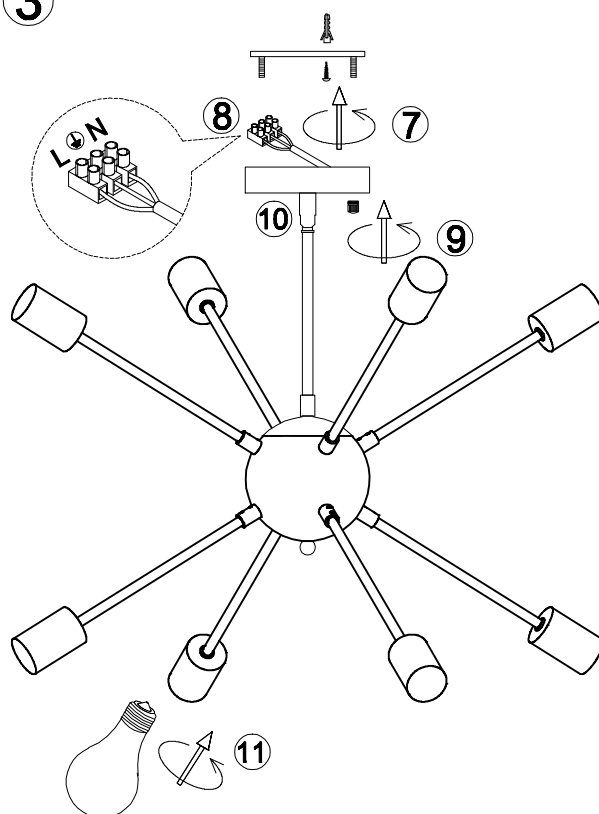
1. Turn and fix the tube 1 on the ball 2, lock it with screw 3.
(note: please hold the tube not the cup by your hand when install the tubes.)

②



2. Let the wire go through the hanging tube 5 and the base 2, turn to fasten the hanging tube 5 on the ball and the base.
(you can connect more hanging tubes to reach the height request)

③



3. Install the plate on the ceiling with expansion tubes and screws 7
4. Connect the wire to your home line with connector 8
5. Install the fixture to the plate with nut 9
(can adjust the light fixture with movable joint 10)
6. Install the bulbs

8/10/12/18 series Installation Manual

Please read carefully before installation!!!

Note : Please make sure that the electricity is powered off during installation !

Only a professional electrician should install this kind of product !