

ASSEMBLY INSTRUCTIONS

TOOLS REQUIRED:

Phillips Screwdriver (Not Provided)

Level (Not Provided)

BEFORE YOU START:

1. Check the hardware against the hardware list to make sure all items are present.
2. **CAUTION:** Do not over tighten screws, nuts or bolts during assembly.
3. Your furniture may require occasional tightening.

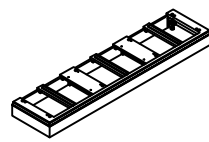
INSTRUCTIONS:

1. Position the base where the unit will sit. Use a level to make sure the base is leveled. Level the base using the adjustable feet with L wrench (K) as shown in Figure 1. Level the base left to right & front to back. Adjust ALL levelers. *Note: The longer base units have more levelers.

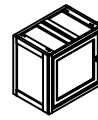
2. Position the storage unit over the base and align the unit onto the base using the built in cleat and channel. Secure the unit to the base by Allen Wrench (D) with Long Bolt (A) + Lock Washer (B) + Flat Washer (C). Install the plastic cap (F) to cover the bolt hole as shown in Figure 2. For the drawer unit, remove the drawer before assembly.

3. Secure the adjustable shelf by screwdriver for the single unit as shown in Figure 3.

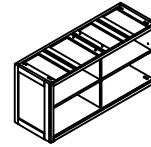
4. Align the crown with the channel on the storage unit and secure it to the one underneath with Allen Wrench (D); Long Bolt (A) + Lock Washer (B) + Flat Washer (C). Install the Plastic Cap (F) to cover the bolt hole as shown in Figure 4.



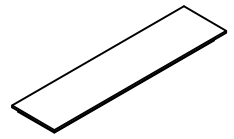
267-513
Base



267-531
Storage Unit



267-522
Open Unit



267-583
Crown

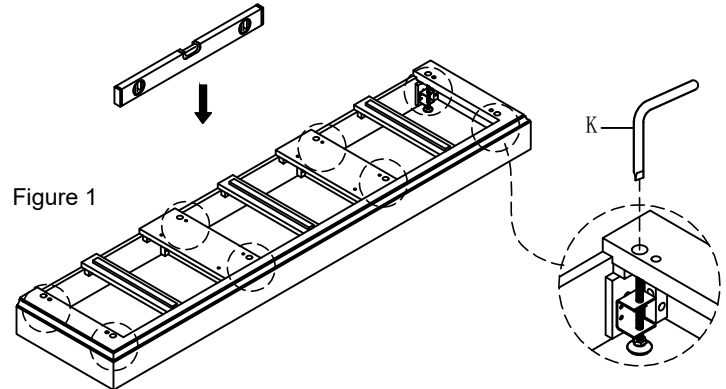


Figure 1

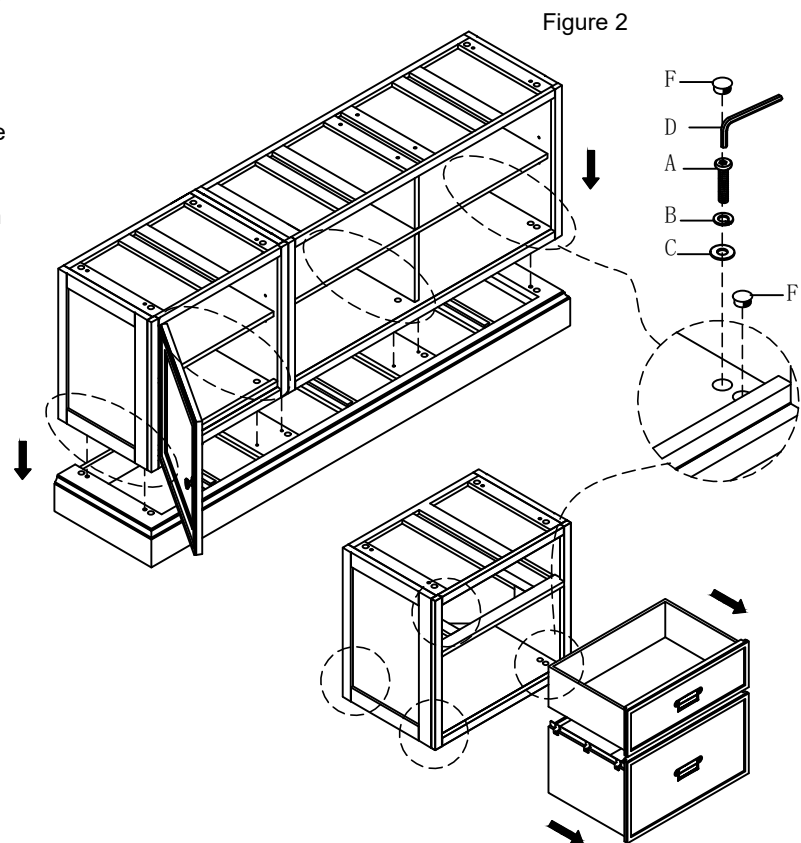


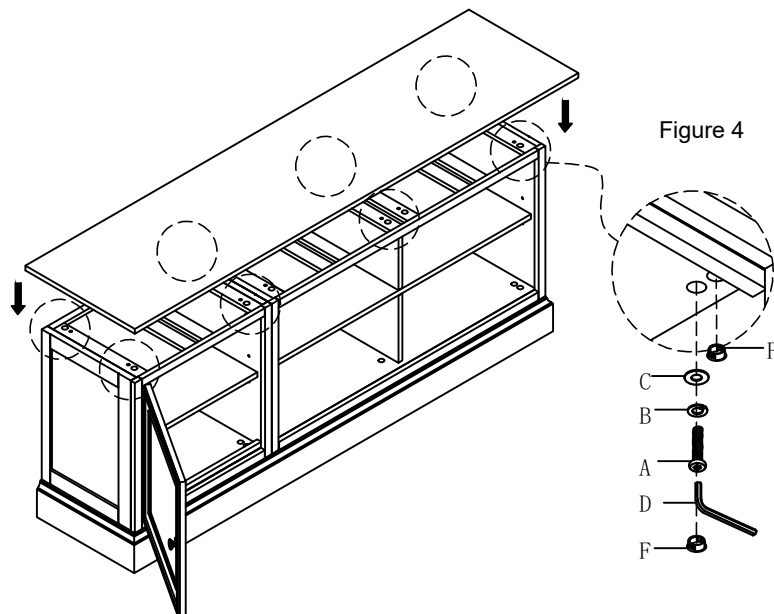
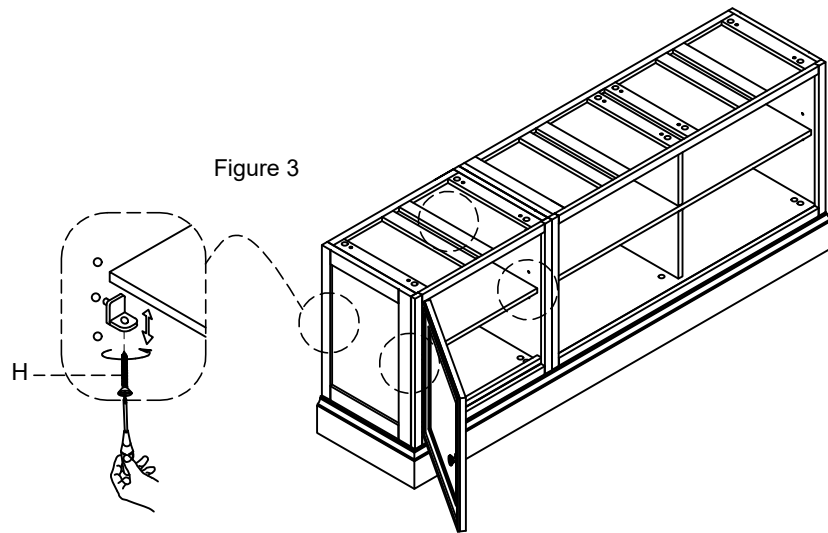
Figure 2

No.	267-513 HARDWARE LIST	Q'ty
K	L Wrench (100*100*6mm)	1pc

No.	267-531 HARDWARE LIST	Q'ty
A	Long Bolt (Ø1/4"*1-1/2")	8pcs
B	Lock Washer (Ø1/4")	8pcs
C	Flat Washer (Ø1/4"*16mm)	8pcs
D	Allen Wrench (100*50*4mm)	1pc
F	Plastic Cap (3/4")	16pcs
G	Shelf Support (Ø6mm)	4pcs
H	Screw (Ø6x5/8")	4pcs

No.	267-522 HARDWARE LIST	Q'ty
A	Long Bolt (Ø1/4"*1-1/2")	16pcs
B	Lock Washer (Ø1/4")	16pcs
C	Flat Washer (Ø1/4"*16mm)	16pcs
D	Allen Wrench (100*50*4mm)	1pc
F	Plastic Cap (3/4")	24pcs

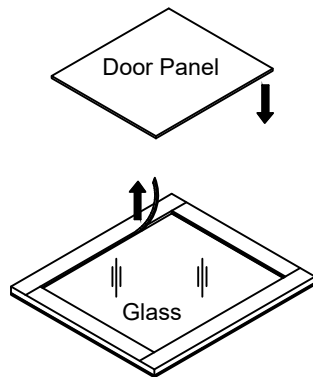
ASSEMBLY INSTRUCTIONS



****NOTE**** Moving the unit after assembly will be very difficult and may effect the leveling of the unit!

ASSEMBLY INSTRUCTIONS

Note: For the door unit, remove the glass moulding to change out the door panel from glass to wood.

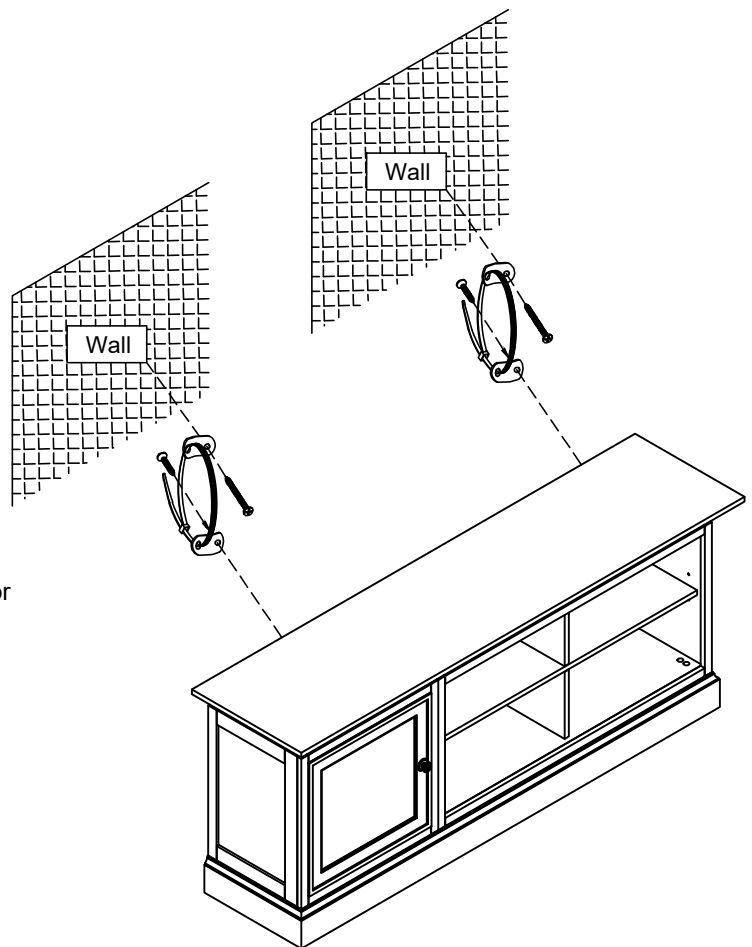


NOTES:

*Screw the first metal plate on to the back of the case with screwdriver and the second metal plate to the wall. Insert the plastic ties through the holes in the metal brackets to secure the units as shown.

*For wider configurations be sure the doors are in the correct position before securing. To change a single door unit from right hand doors to left hand doors, simply flip the unit over. You can then install the shelves.

*These steps apply to all configurations.



****NOTE**** Moving the unit after assembly will be very difficult and may effect the leveling of the unit!