

Glass Display Cabinet



Dear Valued Customer,

Thank you for your purchase! We sincerely appreciate your choice and trust in our product.

We are dedicated to providing high-quality products and after-sales service, including:

- ✓ Installation videos and guidance
- ✓ Free replacement of damaged parts (within 30 days of receipt, please provide damage pictures and part numbers)

If you need assistance or have any questions, please feel free to contact us through the purchasing platform. We are always here to help!

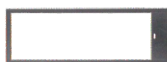
Thank you once again for your support!

CONTENTS

Before getting started, ensure the package contains the following components

• •

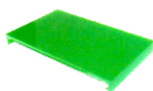
A Back frame*1
(with led strip hole)



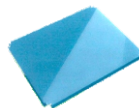
B Front frame*1
(with locking holes)



C Top panel*1



D Bottom panel*1



E Left base panel*1



F Right base panel*1



G Glass shelf*3



H Side glass*2



I Back glass*1



J Glass Door*1



K Lock*1



L Door axle*2



M Shelf suport*12



N Gaskets*2



O Sheet iron*1



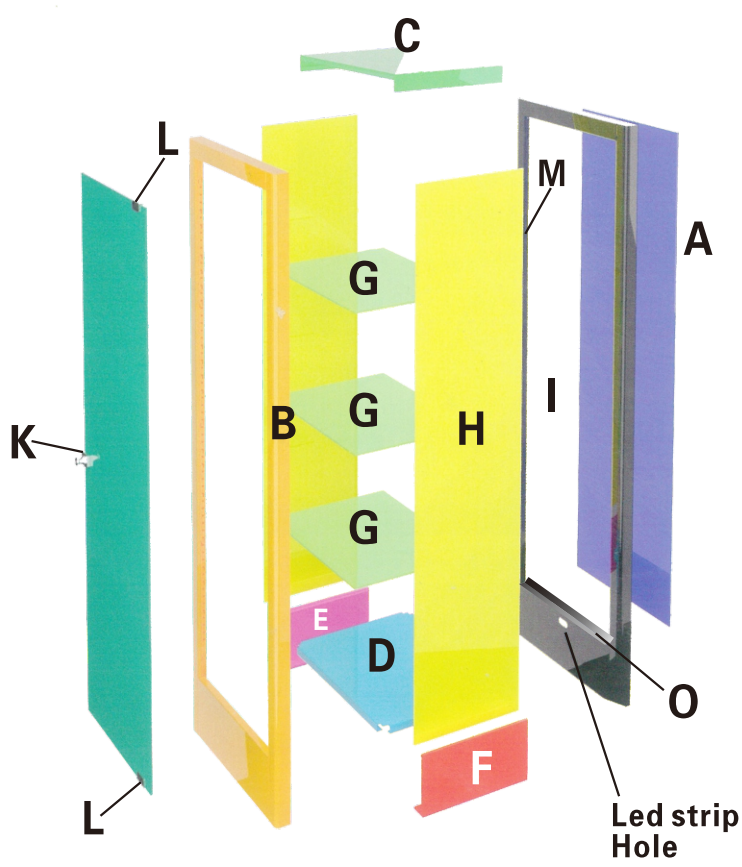
P Crash pad*1



Q Screws

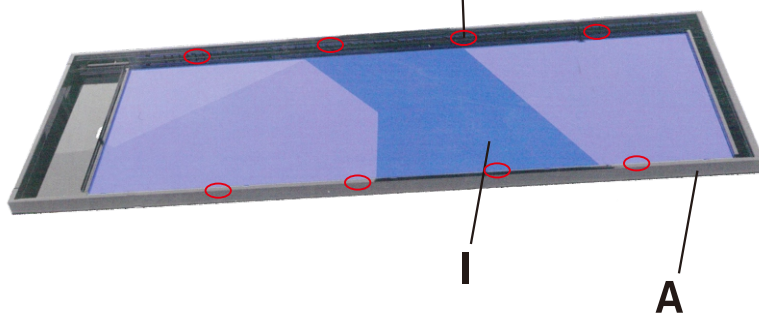
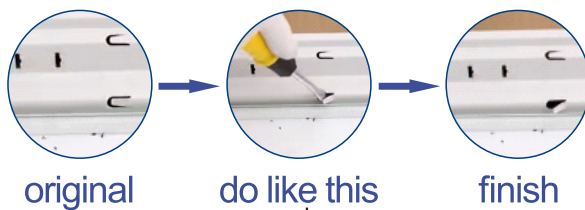


DECOMPOSITION CHART



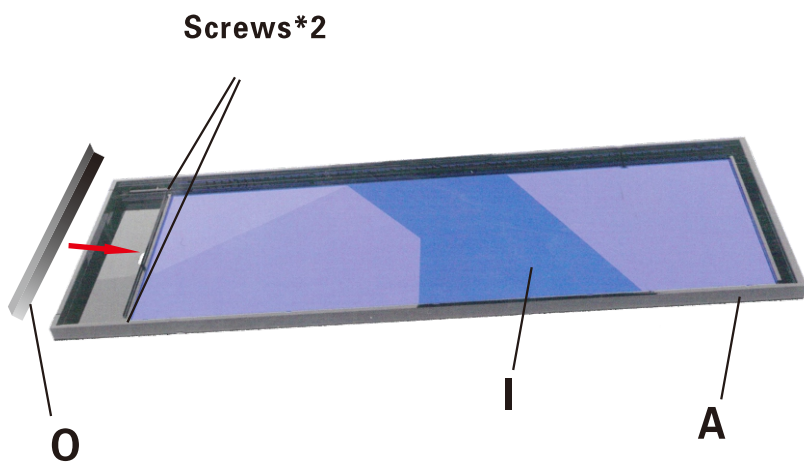
STEP 1

Insert the back glass (I) into the back frame (A) , then bend the metal clips to secure the glass .



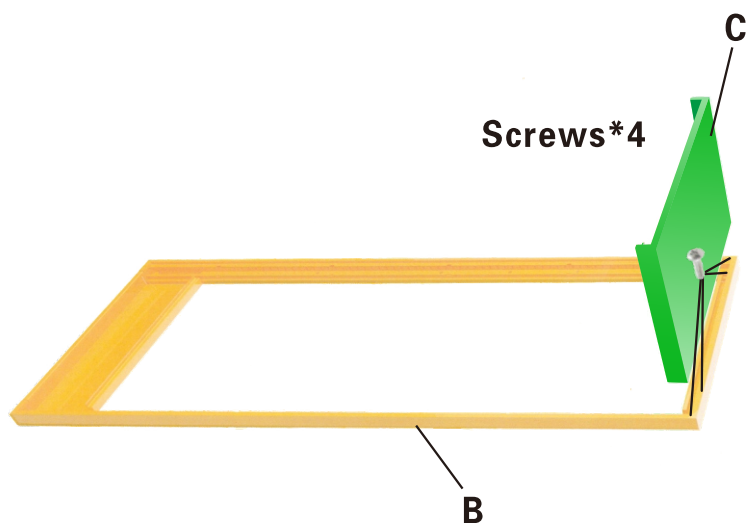
STEP 2

Install the sheet iron(O)on the back frame(A).



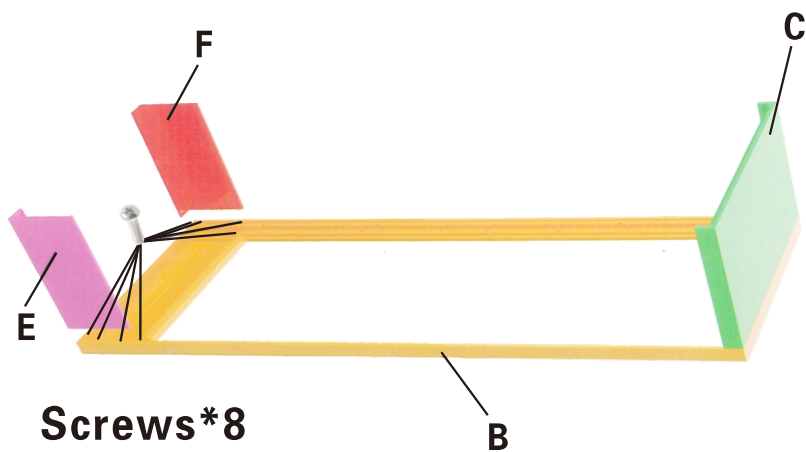
STEP 3

Use screws to connect the top panel (C) and the front frame (B) together.



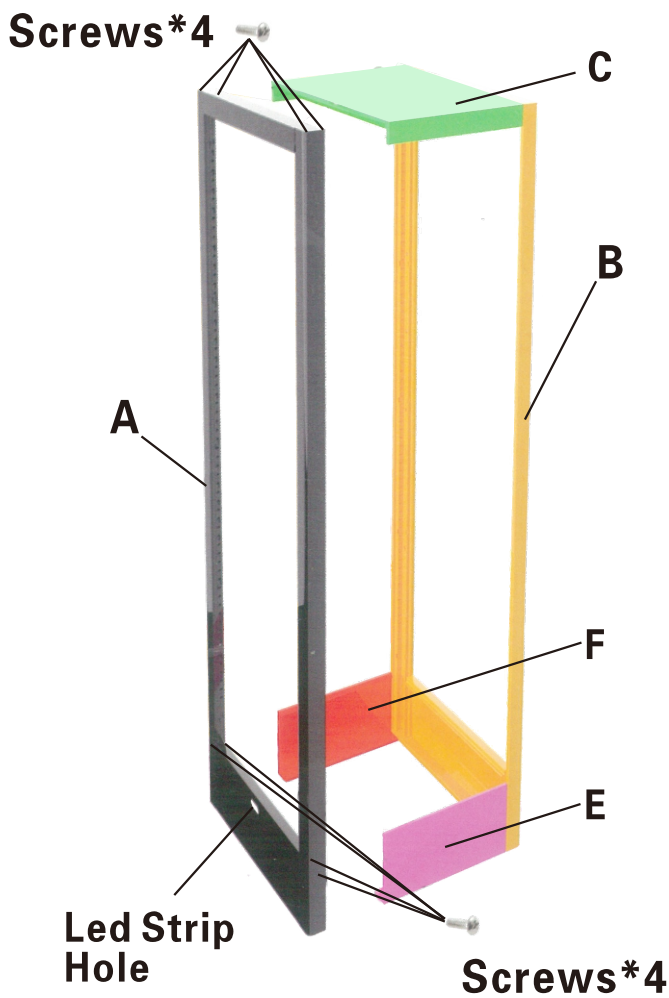
STEP 4

Use screws to connect the left base panel (E) and the right base panel (F) to the front frame (B).



STEP 5

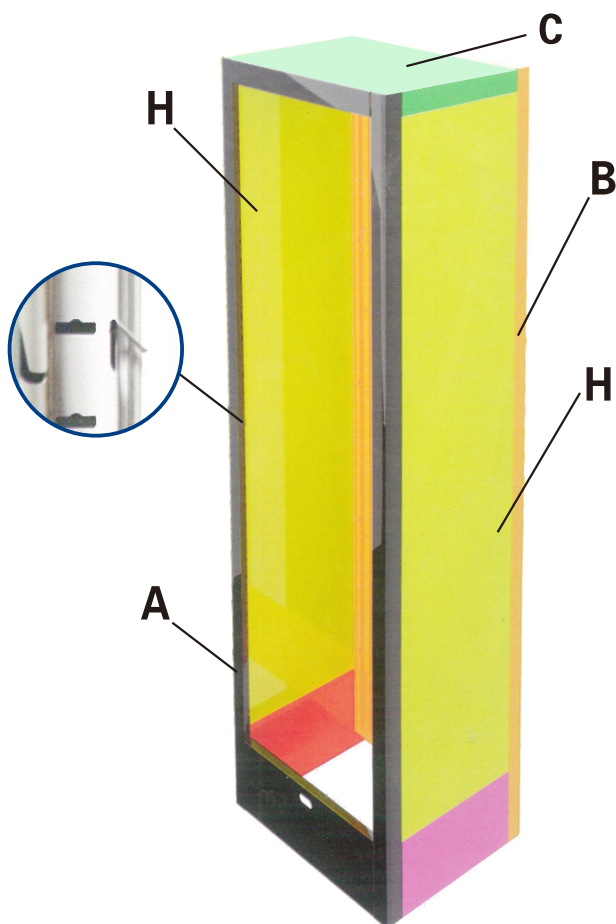
Use screws to connect the top panel (C), left dase panel (E) ,and right base panel (F) to the back frame(A).



STEP 6

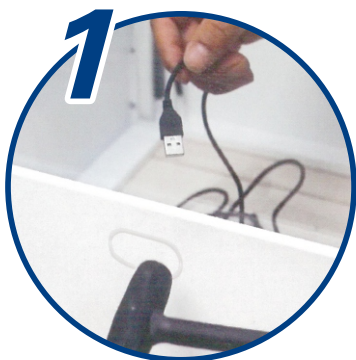
Insert the two side glasses(H) into the frame .

Attention: bend the metal clips like Step 1.

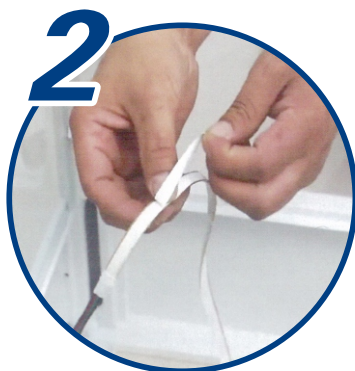


STEP 7

Knock the led strip hole, then install the strip;The following picture is for your reference,you can install it in other ways.



Use a hammer to knock open the reserved hole and pass the plug through the hole to the outside of the cabinet.



Peel off the adhesive backing on the back of the light strip.



Stick the light strip onto the vertical support of the cabinet.



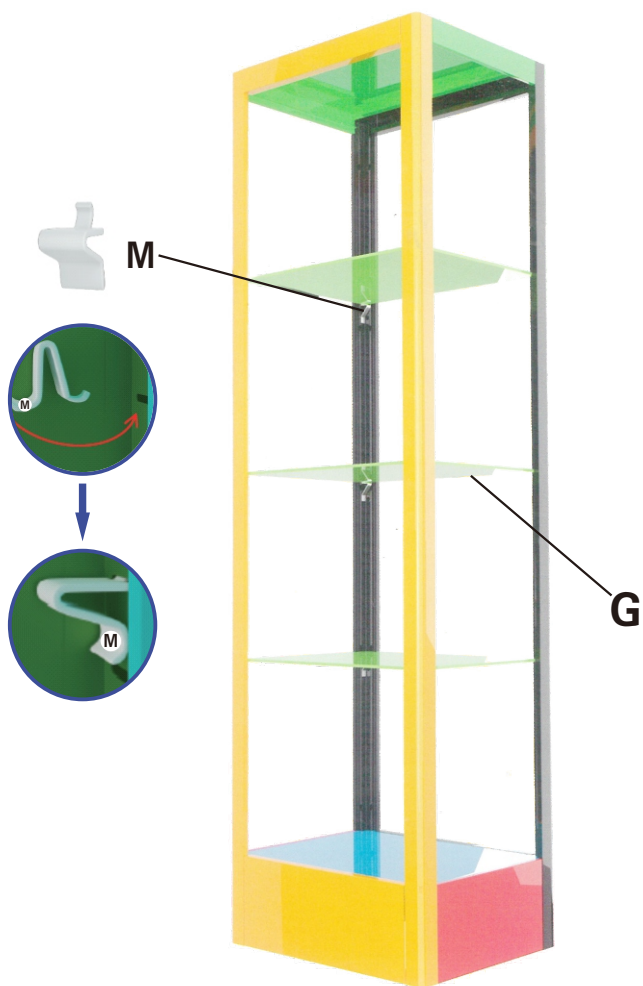
STEP 8

Install the bottom panel(D).



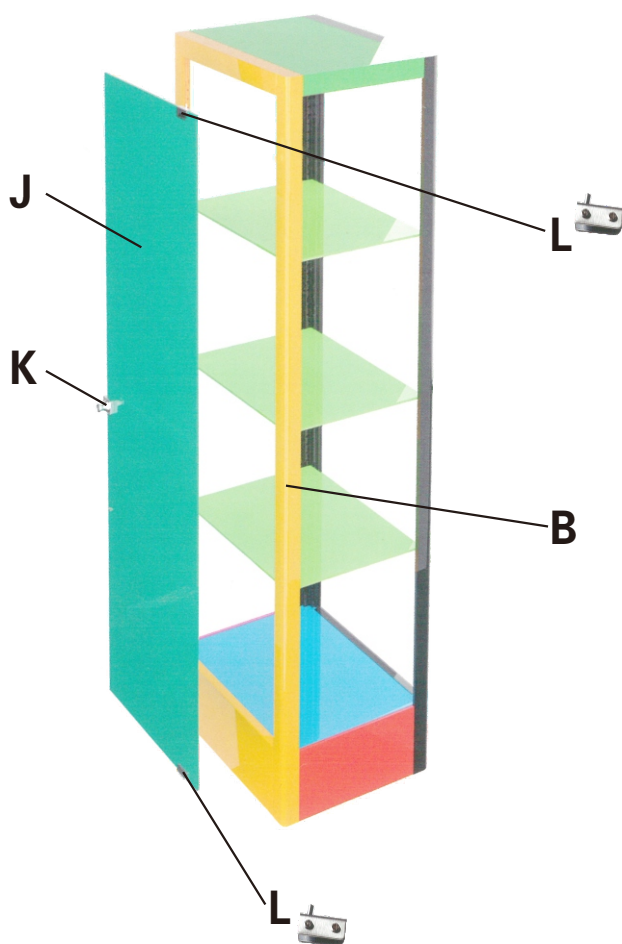
STEP 9

Install the glass shelves (G), securing each shelf with 4 shelf supports (M). Ensure that the shelf supports are on the same horizontal level.



STEP10

Install the whole glass door.



STEP10.1

First install glass door (J) with 1 door axles(L).



STEP10.2

Then install the glass door on the frame cabinet.



STEP10.3

install another door axles(L) on the top of glass door.



STEP10.4

Then adjust and install the door lock (K) according to the position of the locking hole on the frame .



STEP11

Install crash pad (P).

