

IMPORTANT, RETAIN FOR FUTURE REFERENCE: READ CAREFULLY.

Check all parts are present prior to assembly.

- Always pre-drill timber to avoid splitting.
- The timber in this product is pressure treated to ensure longevity and protection against rot. This may leave a colour variations, but these will even out as the moisture content stabilises.
- Timber is a natural material and will shrink and swell as a result of varying moisture content.
- Keep all plastic bags and parts away from children.
- This product must be built at least two metres away from any structure or obstruction.
- This product is not a load bearing structure.
- This product is not intended for use by children. Please make sure children are supervised at all times.
- **Warning. Only for domestic use**

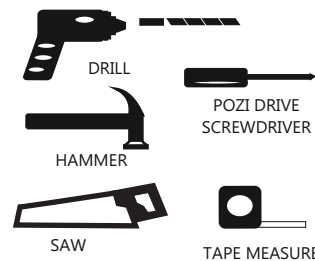
In line with your statutory rights, please check all parts prior to assembly, as assembly of damaged parts may be deemed to be acceptance and this may affect the remedies you are entitled to. If the product is not constructed in accordance with the instructions, or is altered in anyway (e.g. painted), the manufacturer cannot be held liable for any resulting damage.

Note: Before assembling your [] we recommend that the legs be sunk into the ground 300mm or equally reduce the length of your posts and use in conjunction with a post bracket. The posts should be 2400mm above the ground.

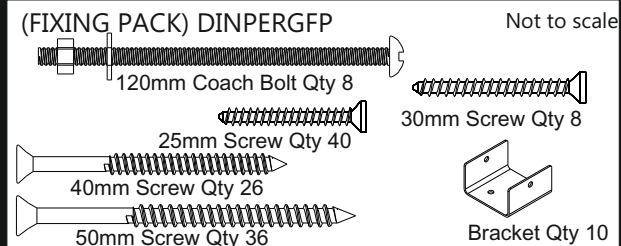
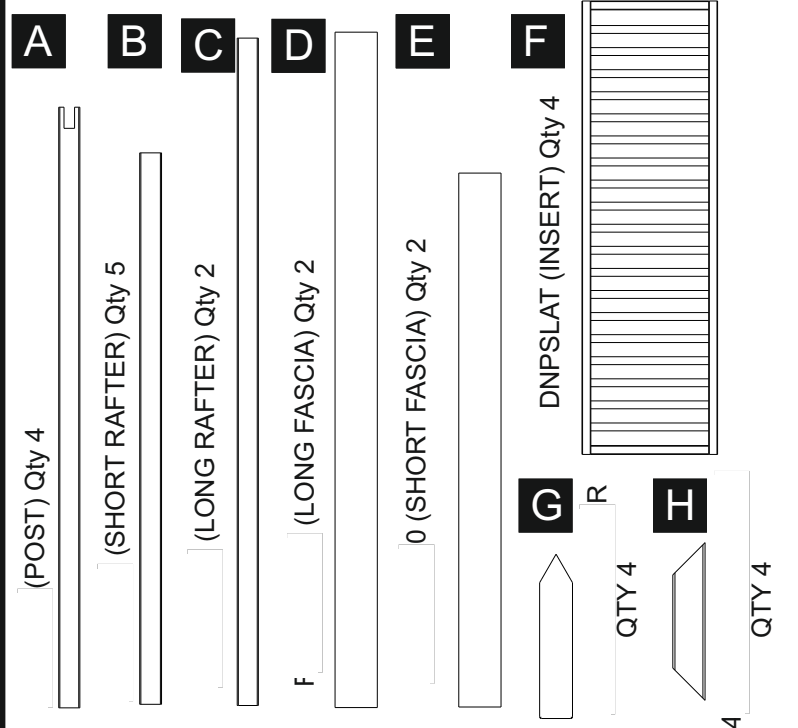
Maintenance:
Regularly check that all fixings are tight and secure.

This article contains biocidal products to give protection against wood destroying insects & wood rotting fungi. Contents may vary. May contain : Basic copper carbonate (Copper (II) carbonate – Copper (II) hydroxide (1:1), Cupric oxide, Copper hydroxide carbonate, oxyethyl, ammoniumpropionate, Copper HDO, Propiconazole, Tebuconazole, Boric acid, Benzalkonium chloride. Wear gloves when handling freshly treated wood. Avoid breathing dust when cutting treated or untreated wood. Dispose of off-cuts responsibly – do not burn.

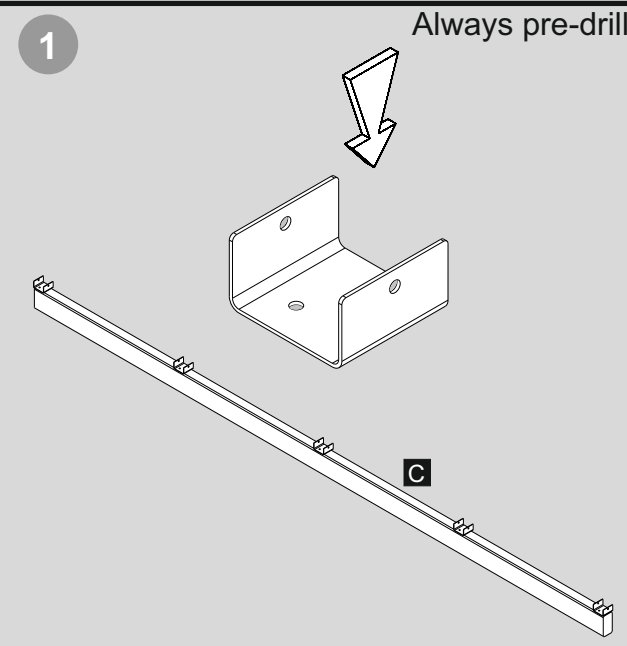
REQUIRED TOOLS : (NOT SUPPLIED)



DINPERG PARTS LIST:



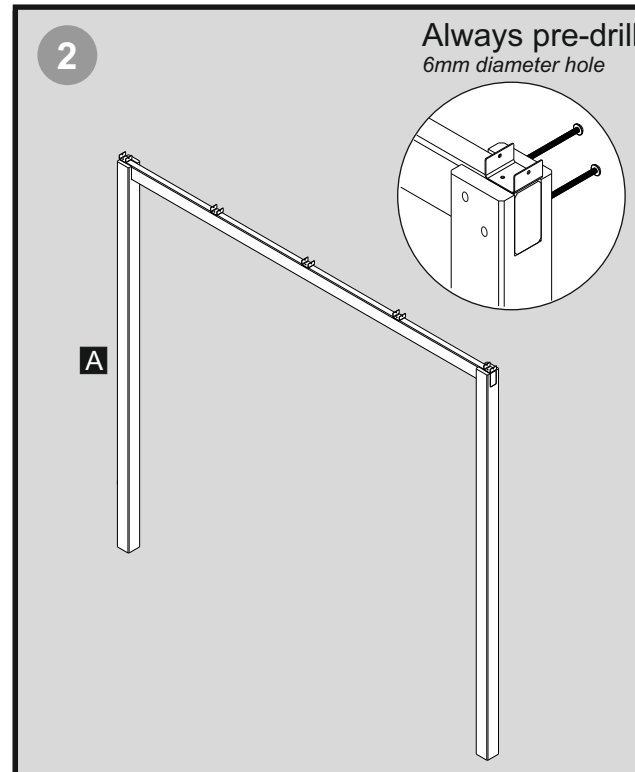
The assembly of this product requires a minimum of two adults



Place the long rafter on the floor and fix a bracket to each end as shown using 2 x 25mm screws.

Position the others so that they are spaced 684mm apart.

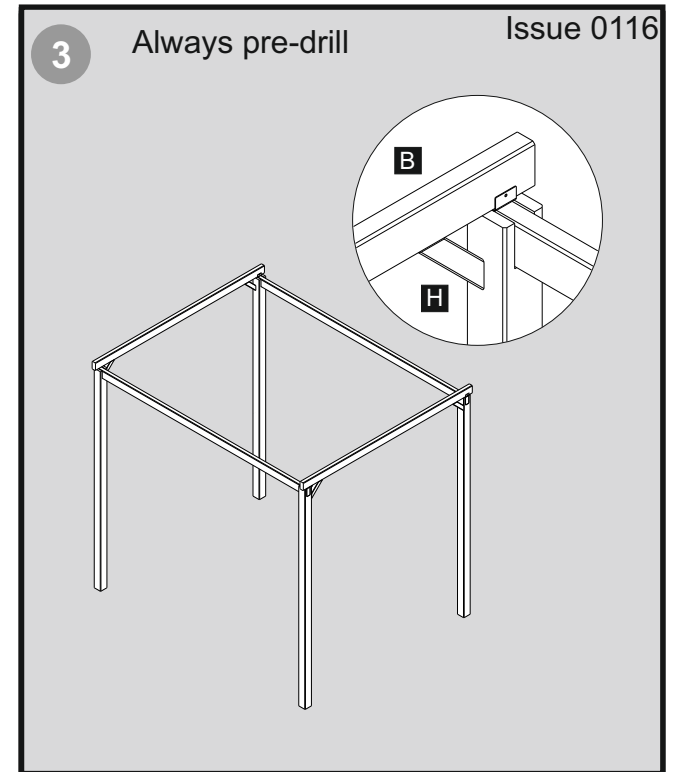
Repeat for the other long rafter



Fix a post to both ends of the long rafter making sure that it is flush at the ends.

Fix the post to the rafter using 2 x coach bolts for each.

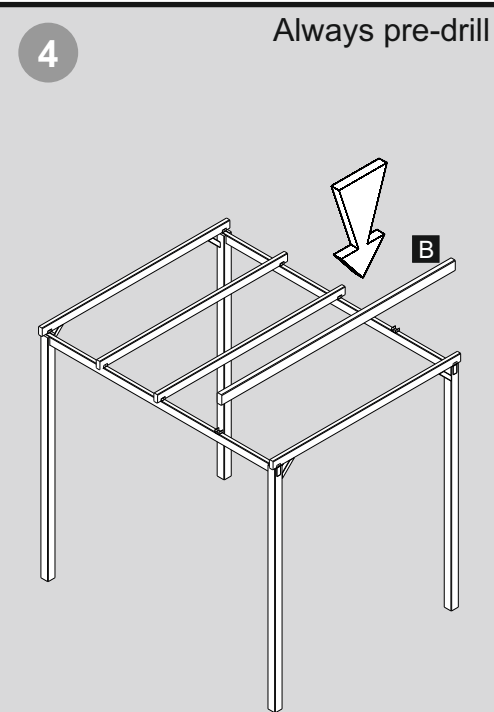
Repeat for the step with the remaining posts and long rafter



Position the two sides of the [] you have just created so that the gap between opposite posts is 2160mm.

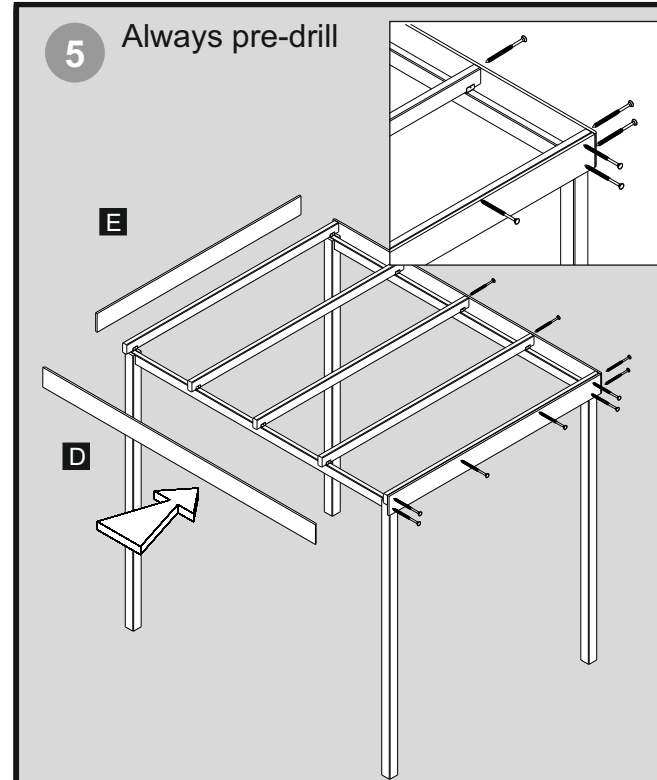
Place a short rafter at each end slotting them into the brackets. These should over hang on both ends by 25mm.

Fix a brace to each corner fixing them to the posts and short rafters using 2 x 50mm screws for each.



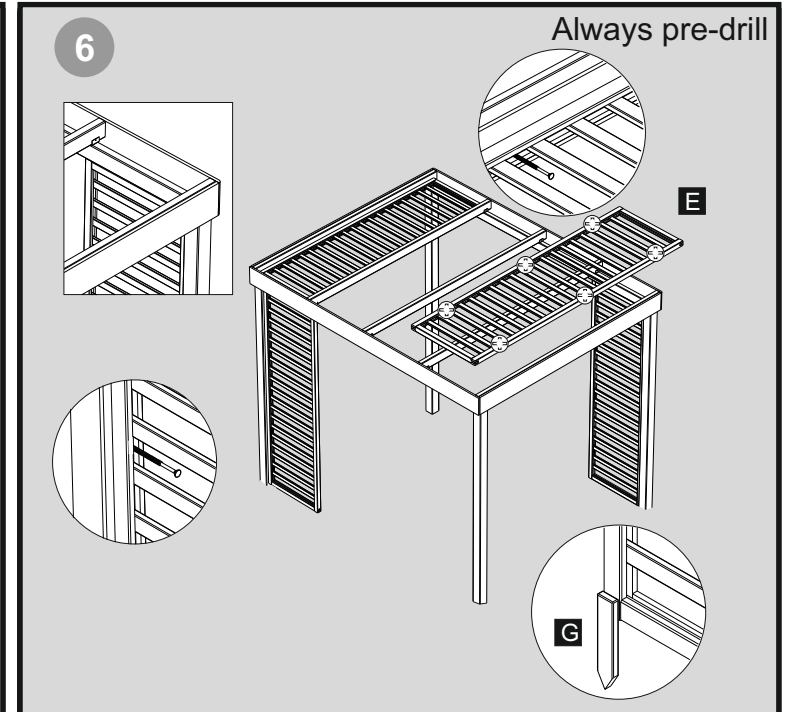
Fix the two end rafters into place using 2 x 25mm screws for each end using the holes in the brackets.

Place and secure the remaining rafters.



Position the short fascias against the [] so that they are flush with the top and the ends of the short rafters. Secure each using 6 x 40mm screws.

Place the large fascias [] again so that they are in line with the top of the rafters and the sides of the short fascias. Fix using 7 x 40mm screws.



Position the inserts into the desired position and secure them to the rafters using 6 x 50mm screws screwing through the grooves of the insert into the rafter.

If you choose to have the inserts vertical. Fix these to the post using 3 x 50mm screws and to the long rafter above using 2 x 50mm screws.

If [] is situated directly onto the ground. Please use the spikes provided. Fixing them to the end of the insert using 2 x 30mm screws.

If [] is situated on a deck. Please use 2 x 50mm screws to secure the bottom of the insert.