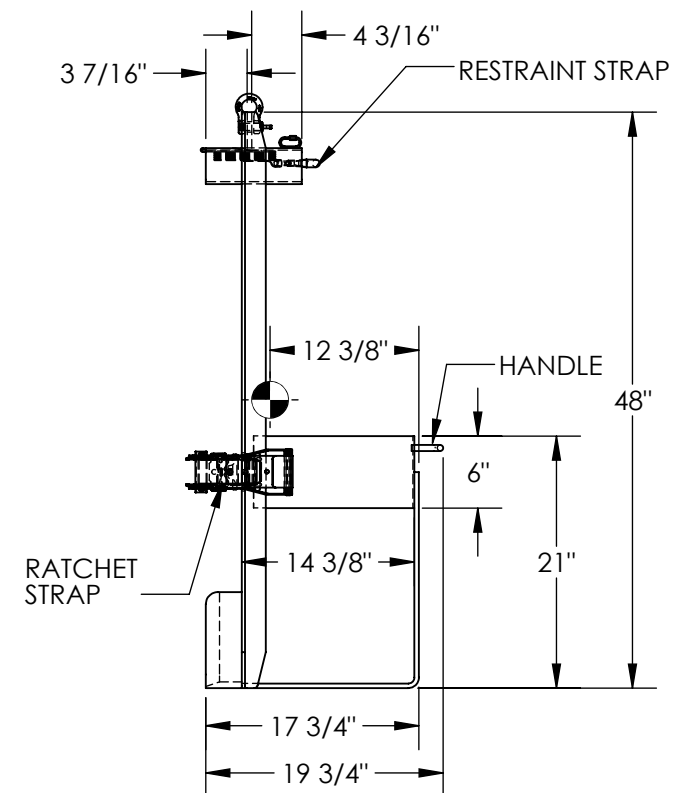
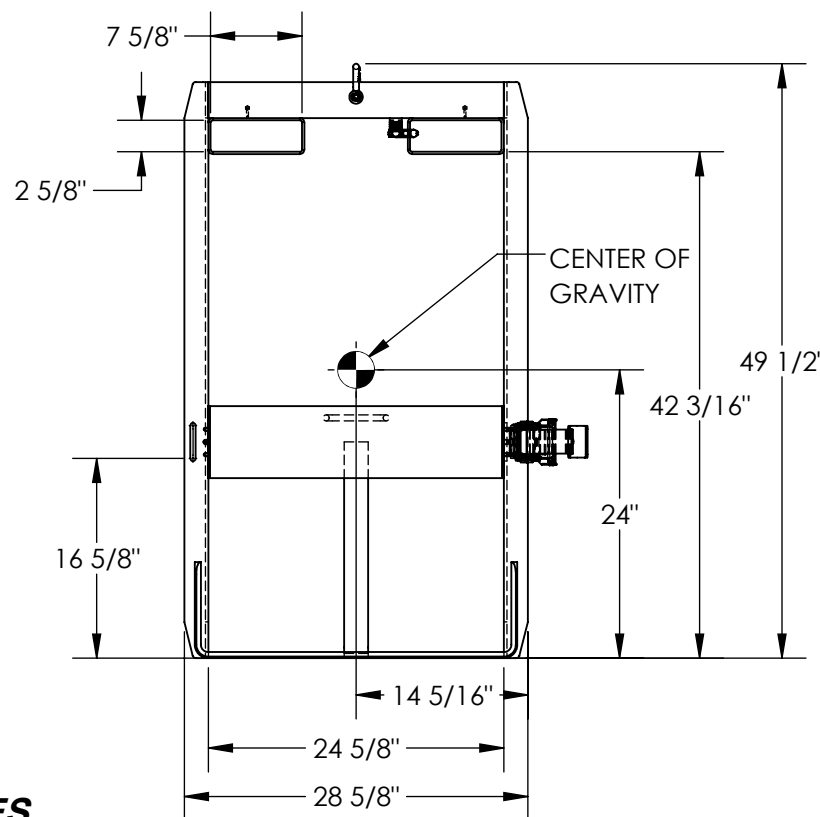
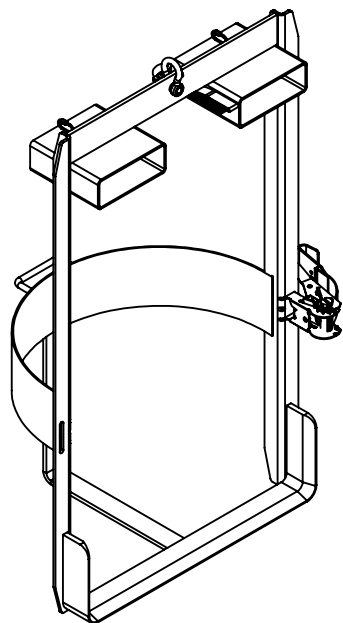


DRUM CARRIER/HOIST MOUNTED - DRUM-LUG

APPROX WEIGHT: 85.64 lbs.
DOES NOT INCLUDE WEIGHT OF POWER OR PACKAGING!!!

*** ANY ADDITIONS, DELETIONS, OR OMISSIONS MUST BE CORRECTED ON THIS DRAWING AS THIS DRAWING WILL BE CONSIDERED ALL INCLUSIVE ***

ALL GRAPHICS PROVIDED ARE FOR REFERENCE ONLY. IF CERTAIN DIMENSIONS ARE CRITICAL PLEASE VERIFY THOSE DIMENSIONS WITH YOUR SALESPERSON



DIMENSION TOLERANCE $\pm 1/4"$

STANDARD FEATURES

- MODEL NUMBER IS DRUM-LUG
- OVERALL WIDTH IS 28 5/8"
- OVERALL LENGTH IS 19 3/4"
- OVERALL HEIGHT IS 49 1/2"
- UNIFORM CAPACITY IS 1,000 LBS
- RATCHET STRAP SECURES DRUM
- ACCOMMODATES 30 AND 55-GALLON STEEL, PLASTIC, AND FIBER DRUMS
- MAX DRUM WIDTH ALLOWANCE IS 24 5/8"
- HOIST MOUNTED FOR EASY TRANSPORT
- FORK POCKET SIZE IS 7 5/8" X 2 5/8"
- NON-TILTING STYLE DESIGNED FOR STRAIGHT VERTICAL LIFTING ONLY
- TOUGH BAKED IN POWDER COATED YELLOW FINISH
- INCLUDES FORK TRUCK RESTRAINT STRAP

SPECIAL FEATURES

NONE

APPROVAL

I, THE UNDERSIGNED, AGREE THAT THE PRODUCT AS REPRESENTED SATISFIES DESIGN AND DIMENSION REQUIREMENTS. I ALSO ACKNOWLEDGE MY DUTY TO CONFIRM PRODUCT AND INSTALLATION COMPLIANCE WITH ALL APPLICABLE FEDERAL, STATE AND LOCAL REGULATIONS AND STANDARDS.
UNITS REQUIRING APPROVAL DRAWINGS OR MODIFIED ARE NON-RETURNABLE
[] As drawn [] As marked

Signed: _____ Date: _____

Printed Name: _____

LEAD TIME WILL START UPON RECEIPT OF SIGNED APPROVAL DRAWING

FOR INTERNAL USE ONLY
PROJECT SIGN OFF

SALES	
ENG.	
FAB.	
POWER	

DISTRIBUTOR'S NAME:		P.O.#
VESTIL MANUFACTURING		X
DRAWN BY: DEY		W.O.#
DATE: 4/12/11		X
REFERENCE: X	SCALE: 1:16	SALES: X
QUOTED LEAD TIME: X	QUOTE #	FILE NAME:
	X	09-007-167