

How to Replace a Tub Spout

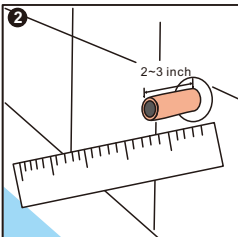
Step-by-step Instructions

Replacing a Tub Spout is an easy project that you can definitely handle yourself. It's a great way to upgrade the look of your bathroom or to repair a spout that has seen better days. There are several different types of Tub Spouts. Here we are going to detail how to replace a 1/2" Copper Pipe Slip Connection, which is the most popular type of connection. For other connections, be sure to follow the manufacturer's directions for installing your Tub Spout.

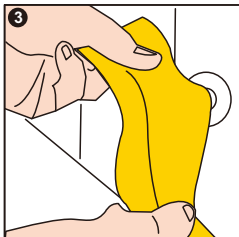
Tools and supplies required: Phillips Screwdriver, Flat Head Screwdriver, Adjustable Pliers, Fine Gauge Sandpaper



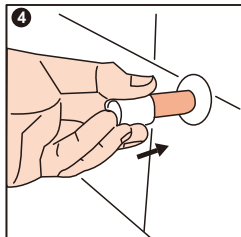
1 Turning counterclockwise, remove the old Tub Spout. If your Tub Spout has a set screw holding it in place, be sure to remove that prior to rotating the Spout off. If your Tub Spout is hard to remove, you may need to use the end of a hammer or large wrench to help loosen while turning. Just insert the handle into the opening of the Tub Spout for leverage.



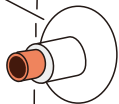
2 Measure the Stub Out Nipple length from the wall surface to the end of the Pipe. The Stub Out Nipple must be between 2" and 3" long. The end of the Stub Out Nipple should be even.



3 Use Sandpaper to remove burrs and sharp edges from the end of the Tubing and to polish the Tube surface to a smooth, bright copper color.

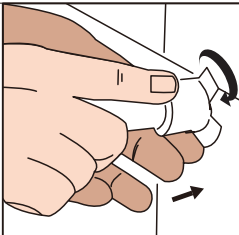


4 Slide the Adapter on the Stub Out Nipple with the threads toward the wall. Lubricate the Stub Out Nipple tubing about 1" with Silicone Grease.



Slide the O-ring onto the Stub Out Nipple at least 1/2" from the end of the Nipple.

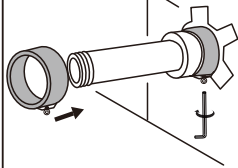
5



Turning clockwise, tighten the Extension Nipple onto the Adapter until the slot in the Adapter aligns with the hole in the Extension Nipple.

Slide the Extension Nipple onto the Stub Out Nipple and thread onto the Adapter aligning hole in the Extension Nipple with the slot in the Adapter.

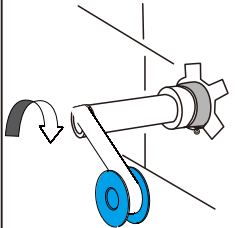
6



Nipple. Tighten the Screw, forcing it to break through the Extension Nipple. Using a Phillips Screwdriver, tighten the Screw until it touches the Stub Out Nipple. Then tighten 1/2 to 1 full turn to secure the Extension Nipple to the Stub Out Nipple. Do not over tighten.

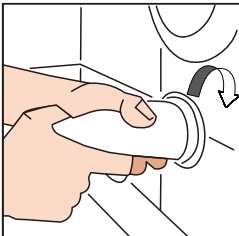
Thread the Screw into the Retainer Ring. Slide the Retainer Ring Assembly onto the Extension Nipple. Align the Screw with recessed hole on the Extension

7



Turning clockwise, apply 6 to 8 turns of the Pipe Thread Tape to the threads on the Male end of Extension Nipple.

8



Turning clockwise, tighten the new Spout onto the Extension Nipple.

9



Turn water on and test for leaks. If water is leaking from the rear of the Tub Spout, reinstall, as this could damage your wall.

10