

# INSTALLATION GUIDE

8874



1

All accessory parts



2

Install the lamp body according to above steps.



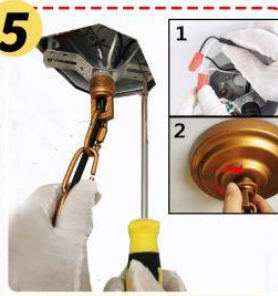
3

Unscrew the collar, then install the canopy and collar according to above steps.



4

Please check the accessory parts are placed in the correct position.



5

Fix the mounting bracket on the electrical box and connect the wire. Screw the collar for fixing the canopy.



6

Hang the wooden beads lampshade to the lamp body by hanging rod.



7

Connect the shorter chain and bulb fixture body by open loop.



8

The other side of chain was connect the bottom by nut.



9

Screw 4 E12 bulbs, the light fixture is ready to use. (Bulb is not included)

## GAUTION

- TO AVOID THE RISK OF FIRE OR SHOCK, FIXTURE MUST BE INSTALLED IN COMPLIANCE WITH ALL APPLICABLE NATIONAL AND LOCAL ELECTRICAL/BUILDING CODES. DISCONNECT POWER BEFORE RELAMPING OR WIRING THE FIXTURE.
- If an existing fixture is being replaced, remove it and note to which of the wires in the outlet box the fixture was attach.
- DO NOT SEPARATE AND OTHER WIRES THAT MAY BE IN THE BOX. DO NOT DAMAGE THE INSULATION OF OLDER WIRING.
- In regular circumstances the Black wire will be the "Hot" lead wire and the WHITE wire will be the "Neutral" or "common" lead wire. A GREEN or BARE COPPER wire is the "Ground". In order buildings it is always good practice to reconfirm the polarity of the wiring.

NOTE: For your safety be certain that the circuit breakers controlling outdoor lighting and equipment are GFI breakers.