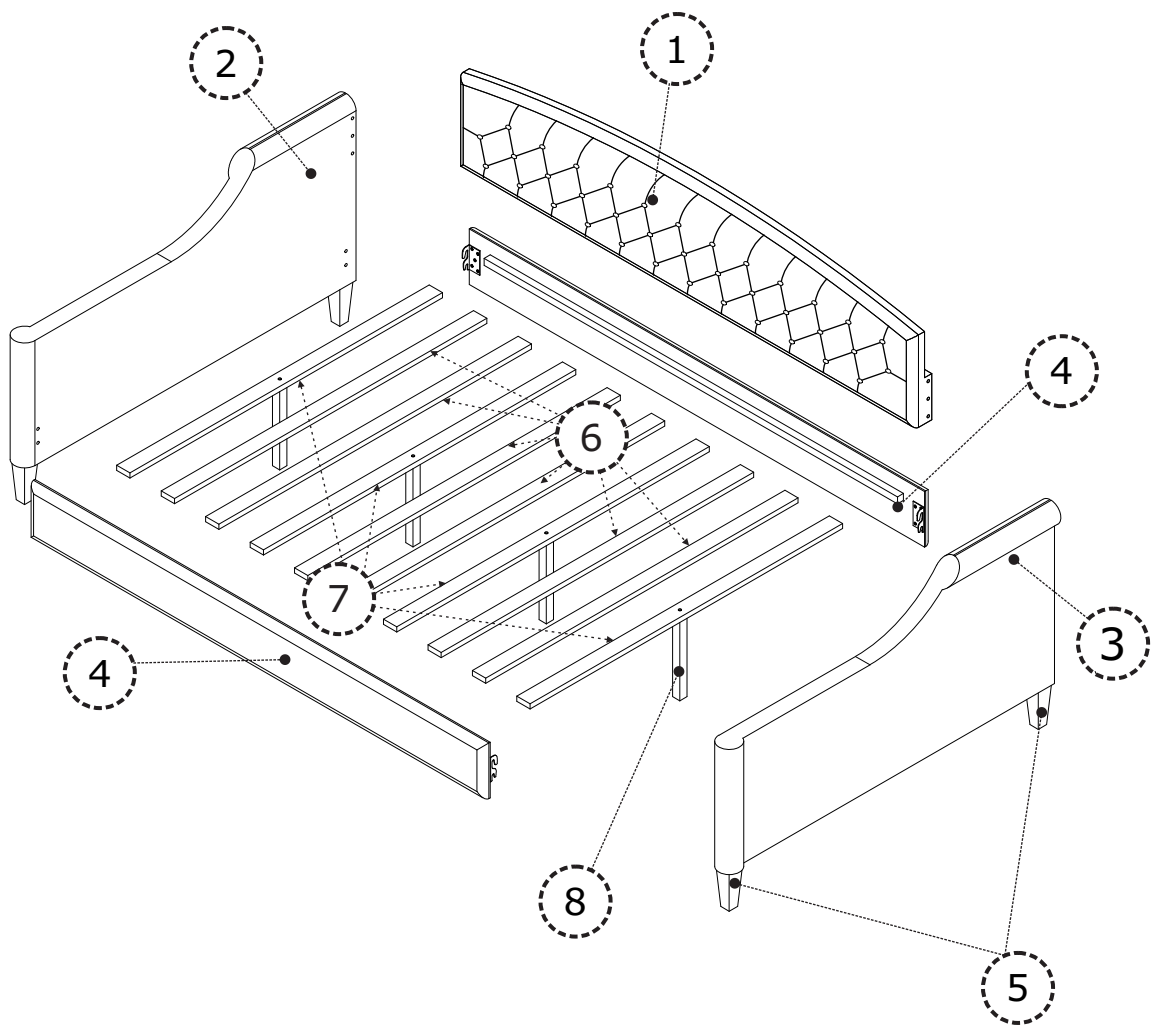


ASSEMBLY INSTRUCTIONS



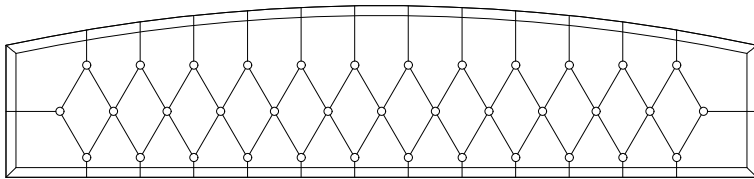
PARTS

Check that you've received all parts listed below.

BOX: 1/2

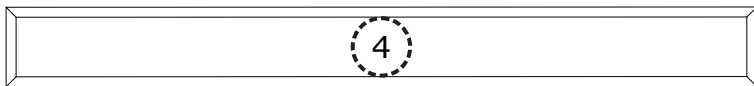
Headboard

1



(1 pc)

Rails



(2 pcs)

Support Legs

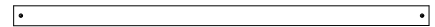
8



(4 pcs)

Slats

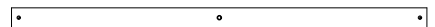
6



(6 pcs)

Slats

7



(4 pcs)

Legs

5

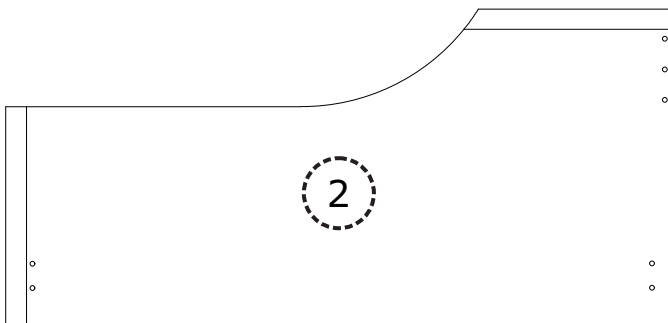


(4 pcs)

BOX: 2/2

Side board Left

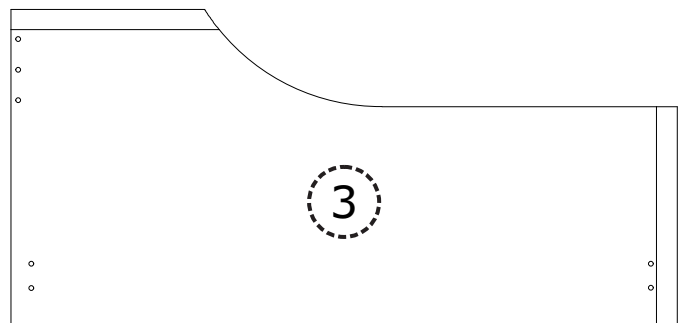
2



(1 pc)

Side board Right

3



(1 pc)





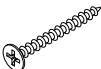


Hardware



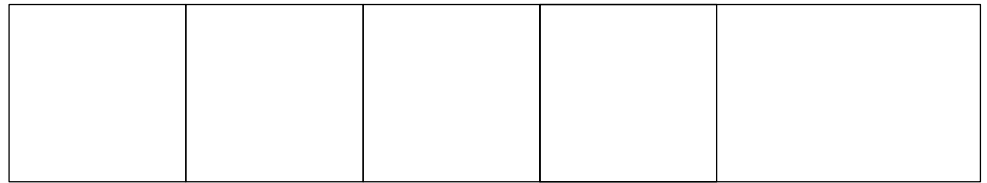
HARDWARE

Check that you've received all hardware listed below.

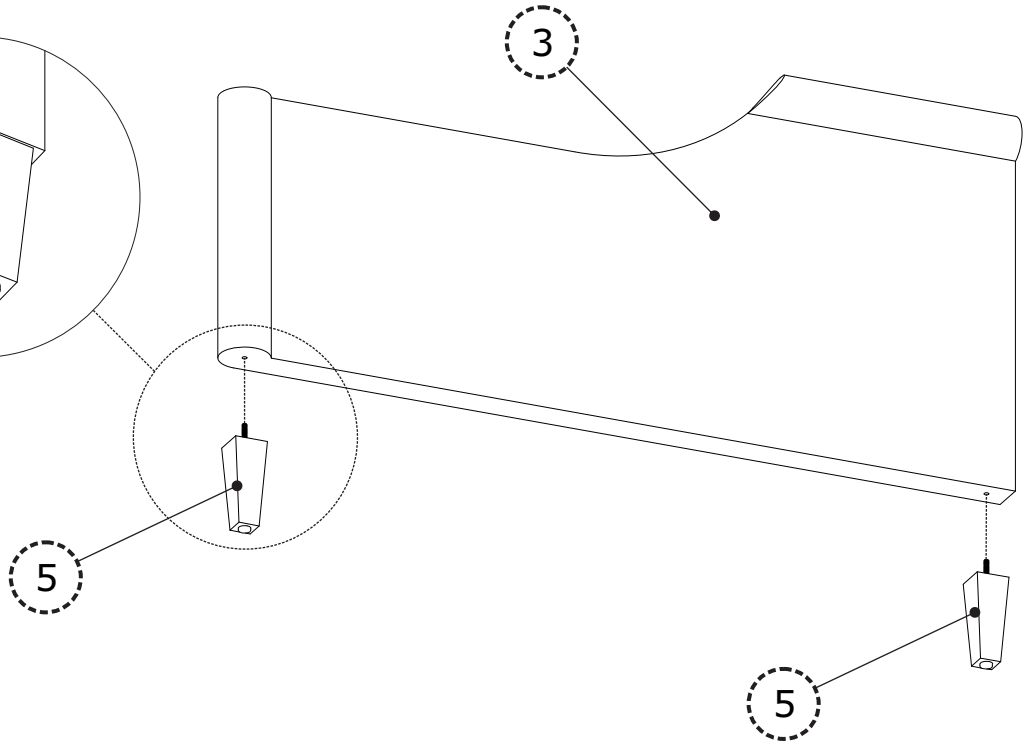
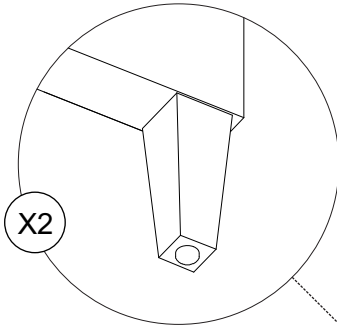
Hardware List

No.	OUTLOOK	DESC	QTY
(A)		Bolts 5/16"x38 mm	12
(B)		Plain washer Ø19x1.5 mm	16
(C)		Spring washer Ø13x1 mm	16
(D)		Allen key 80x30x4 mm	1
(E)		Screws Ø4x30 mm	20
(F)		Bolts 5/16"x60 mm	4
(G)		Dowel Ø10 x 25 mm	2

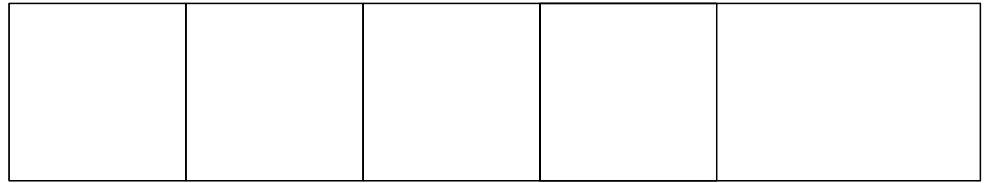
STEP 1



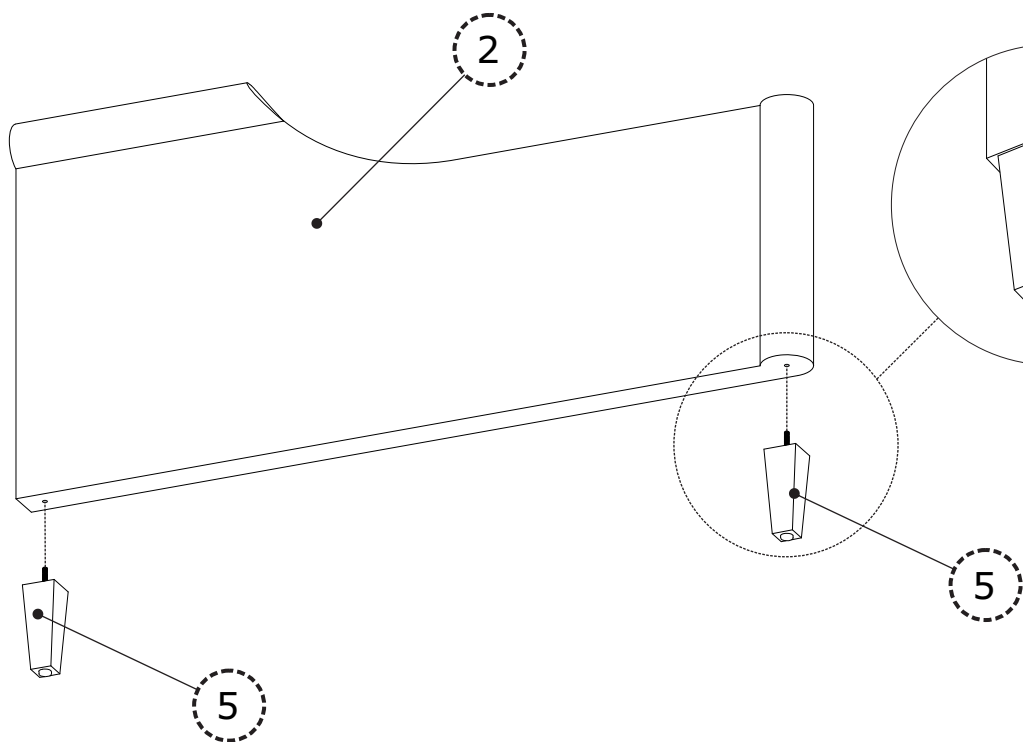
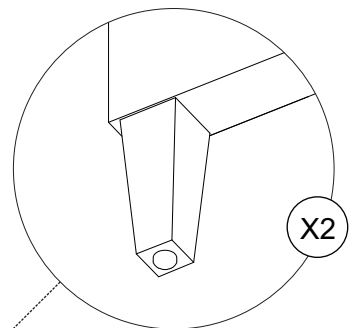
100%



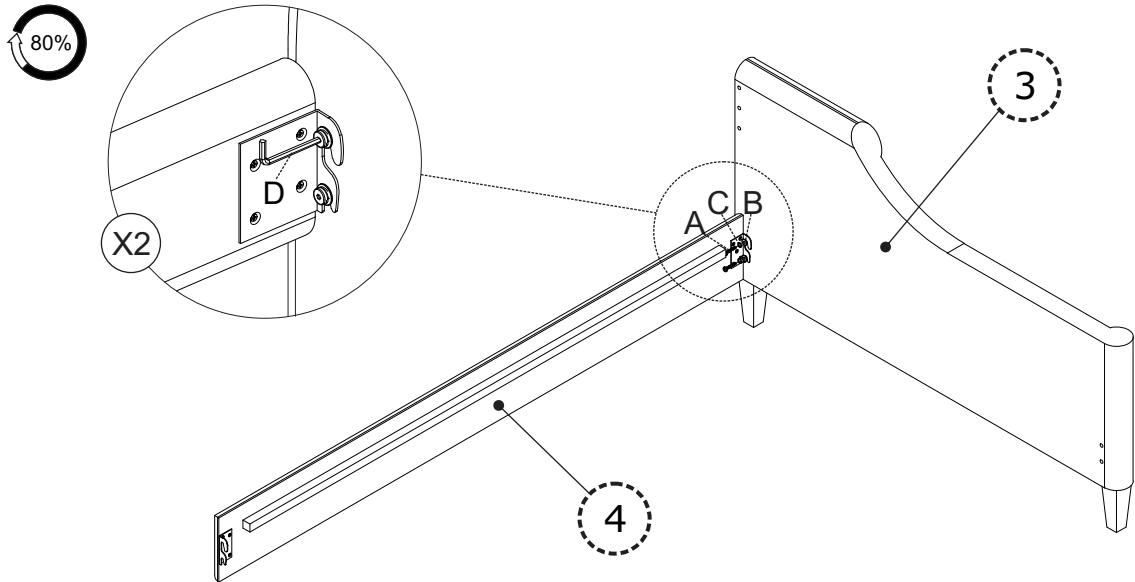
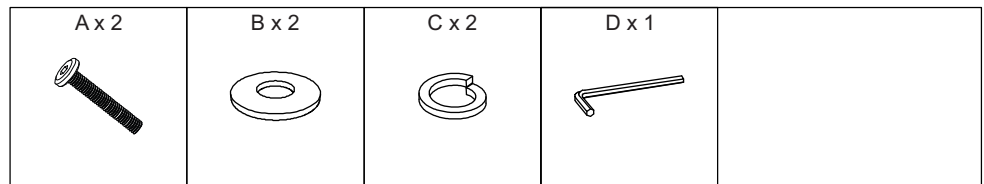
STEP 2



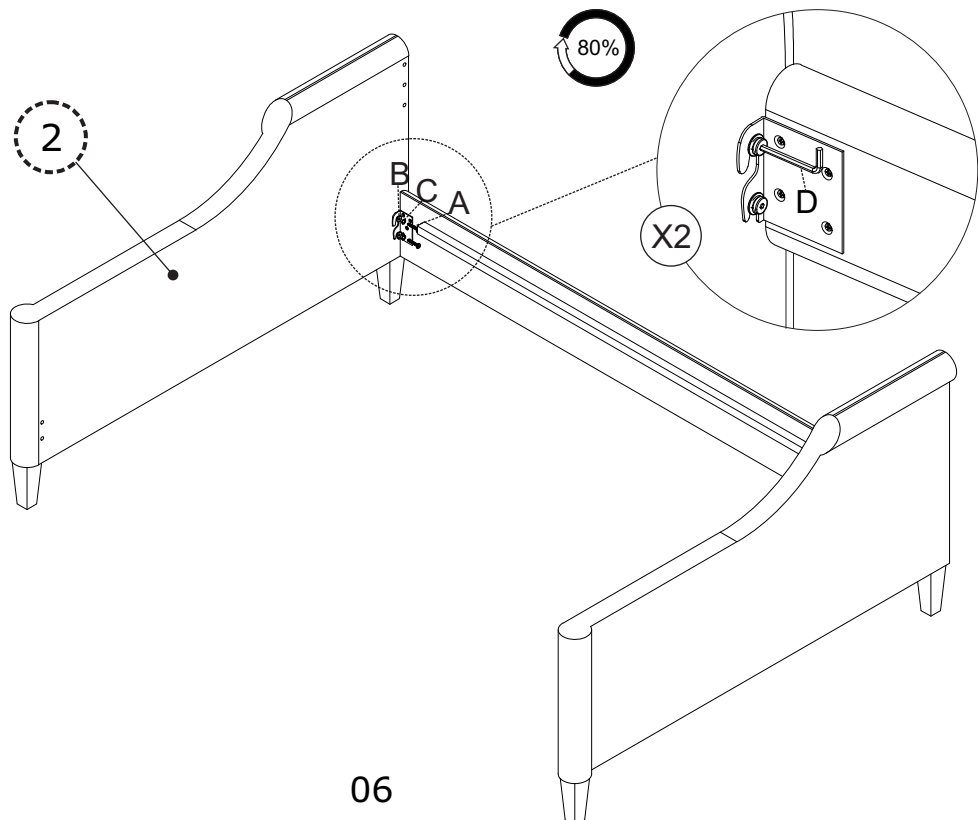
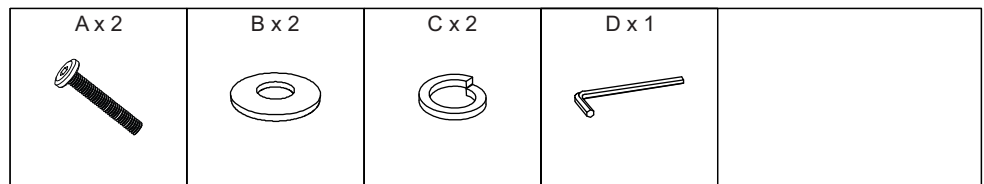
100%



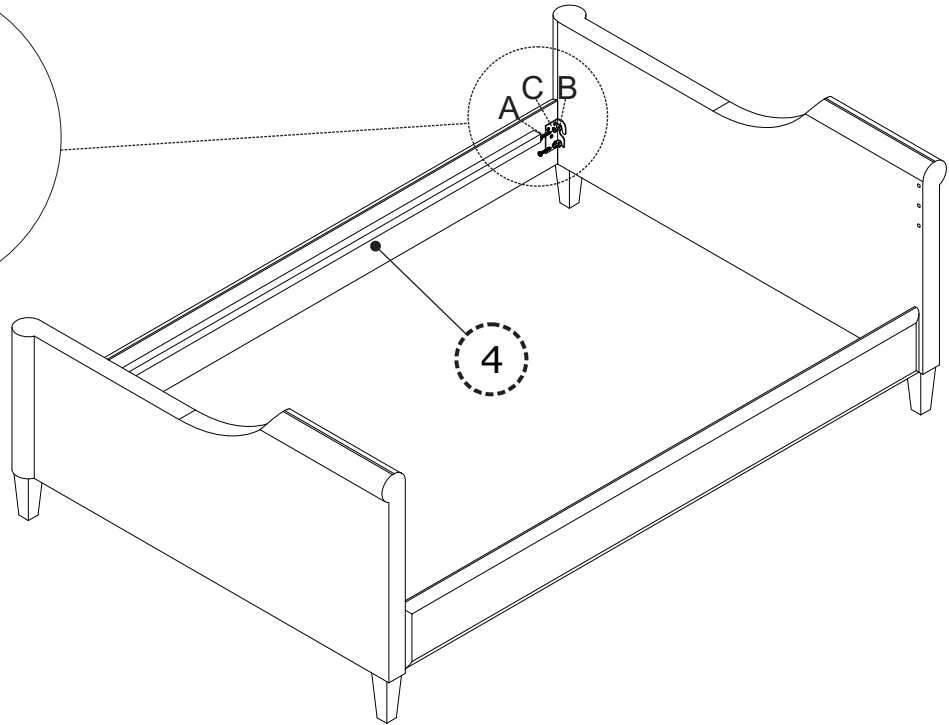
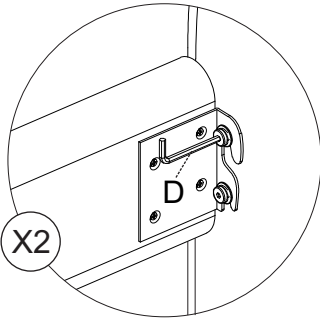
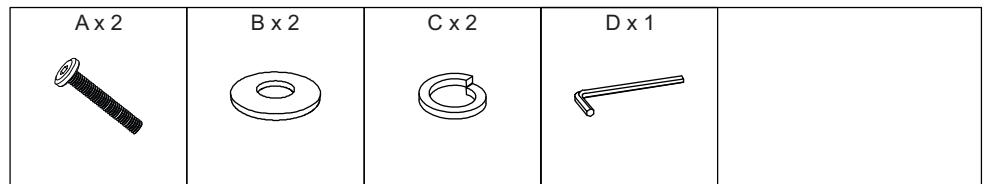
STEP 3



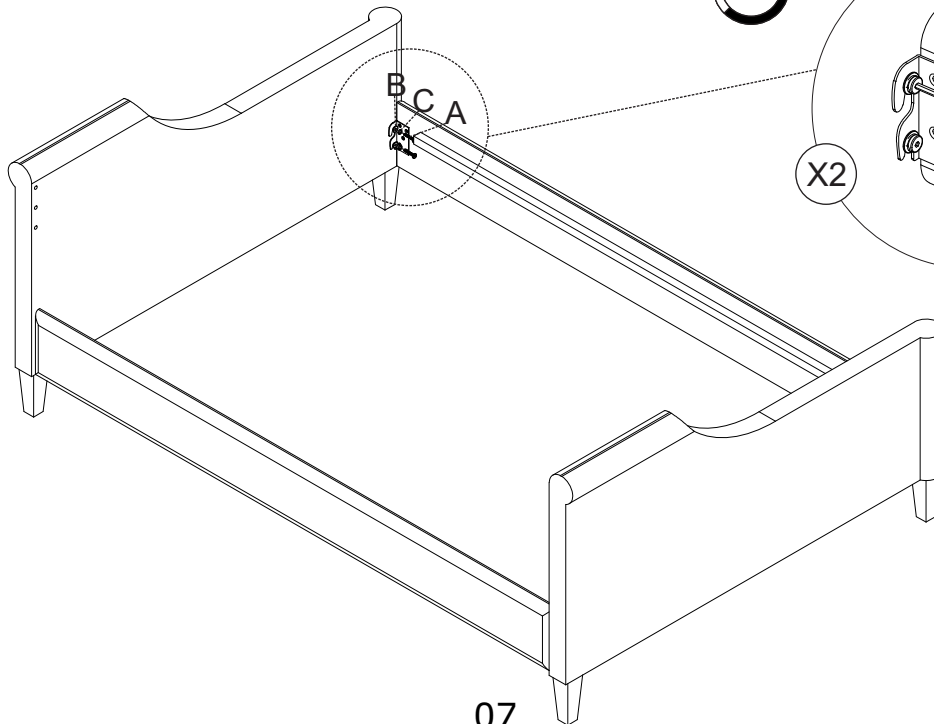
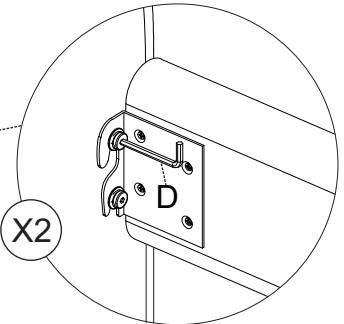
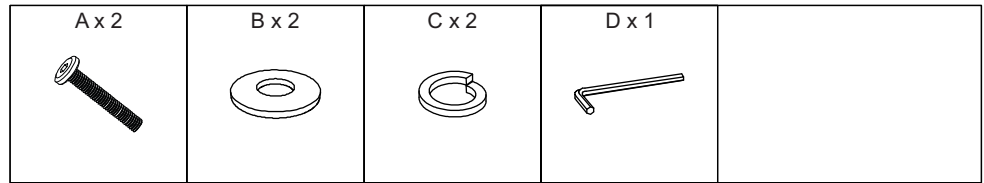
STEP 4



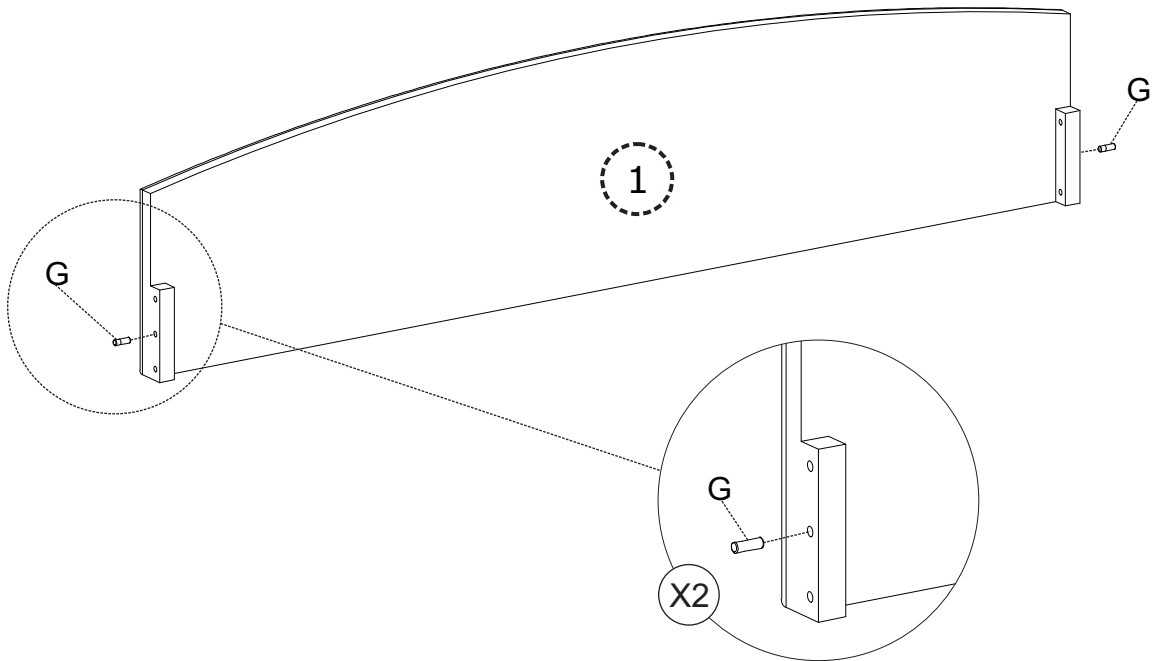
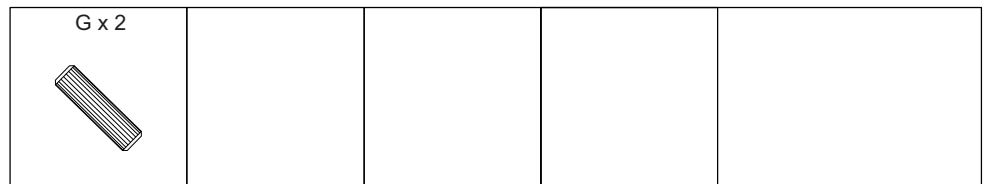
STEP 5



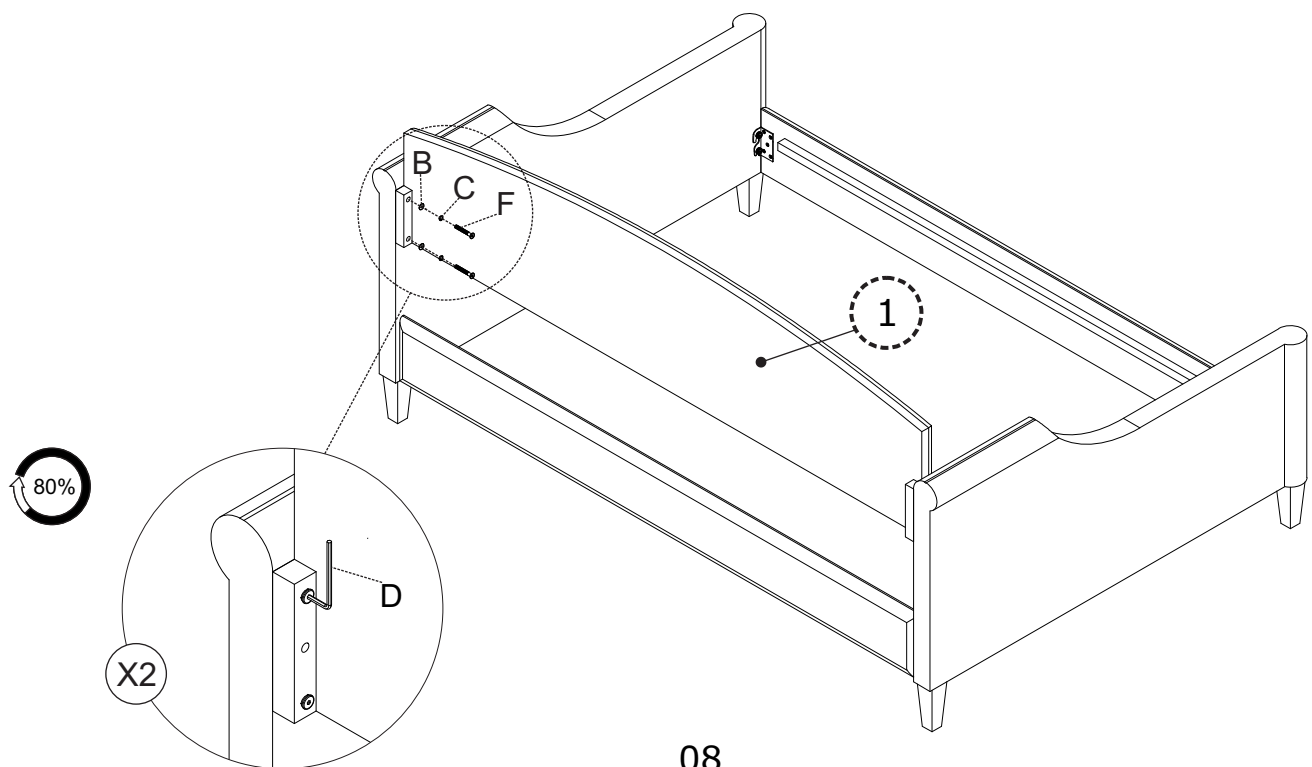
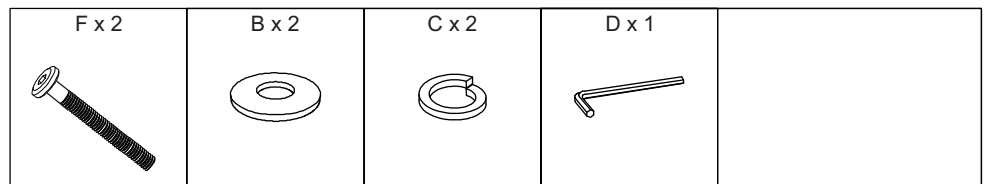
STEP 6



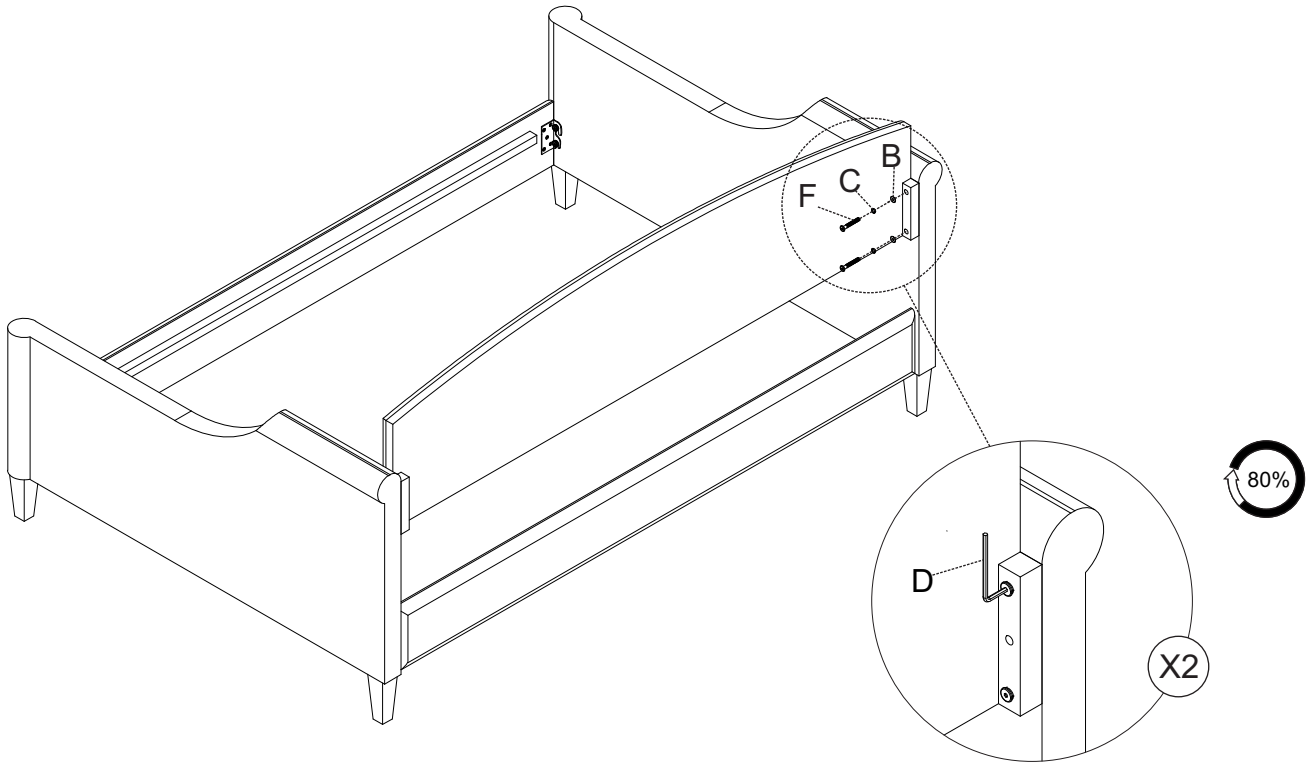
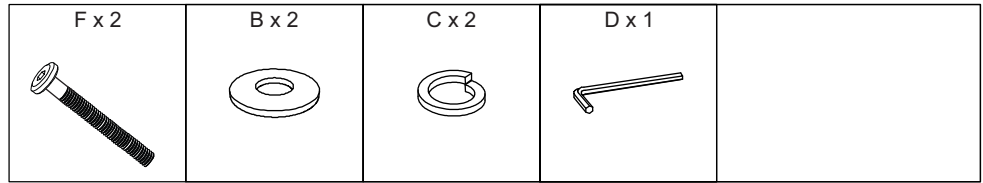
STEP 7



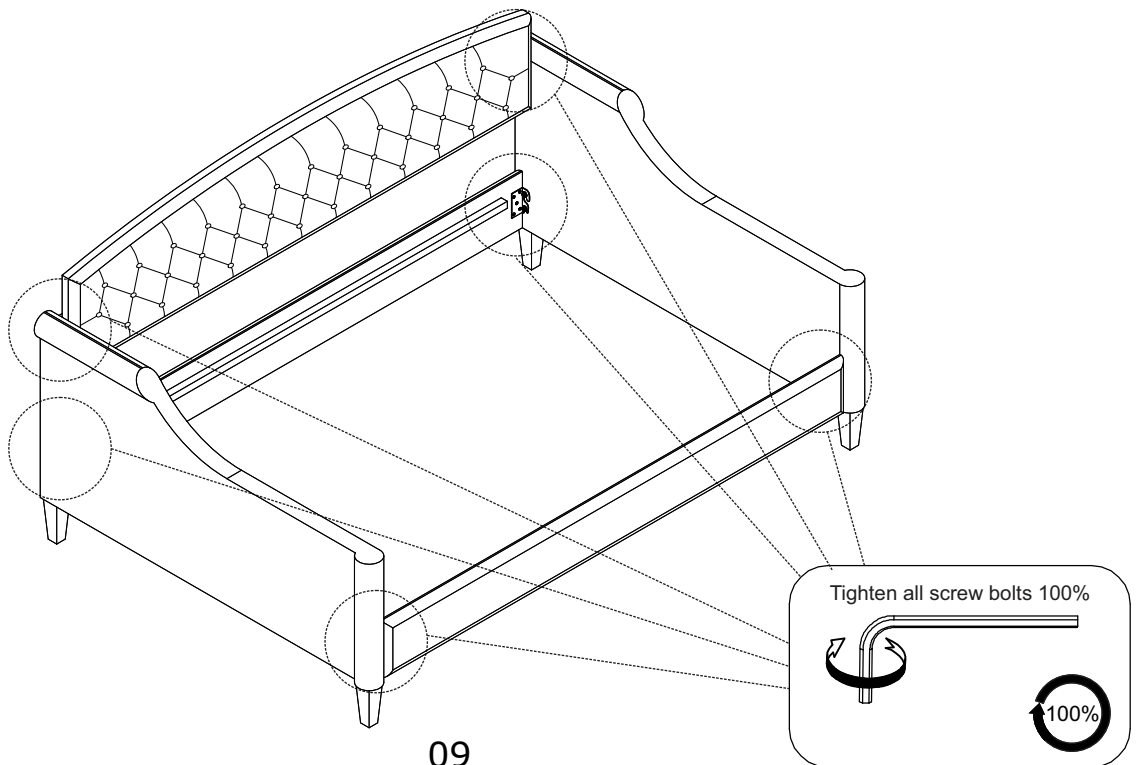
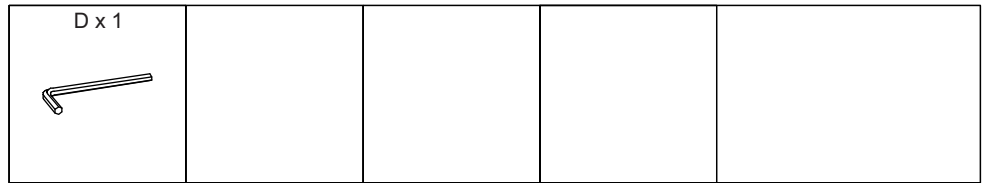
STEP 8



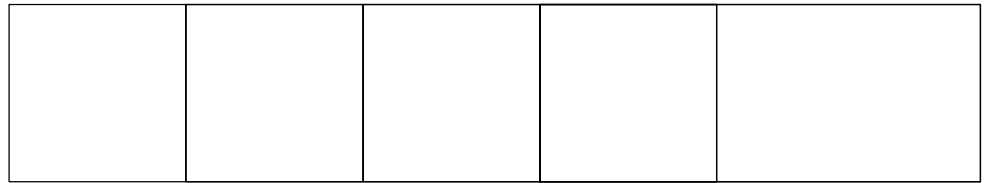
STEP 9



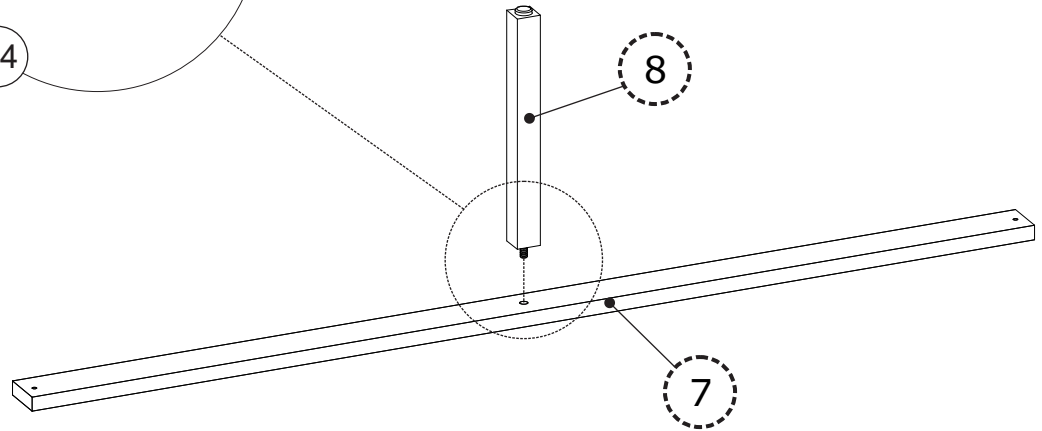
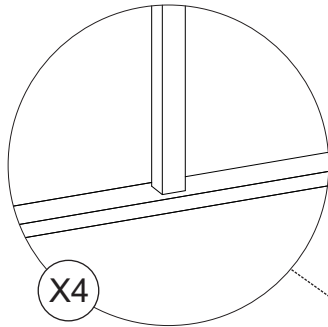
STEP 10



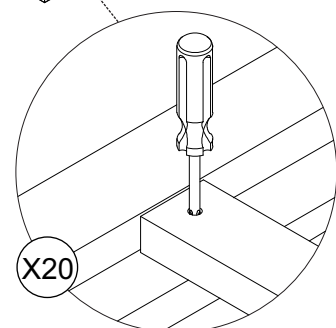
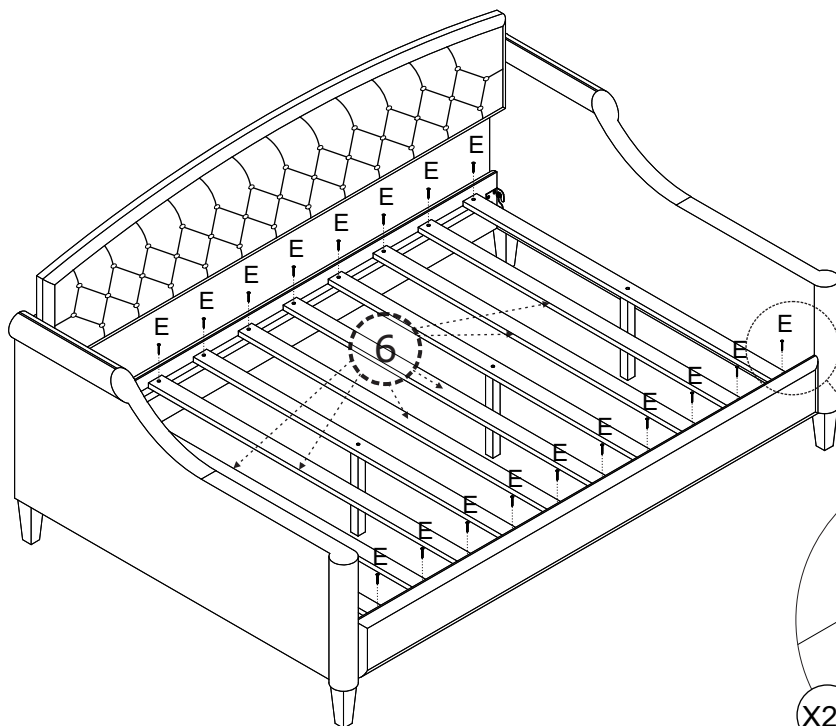
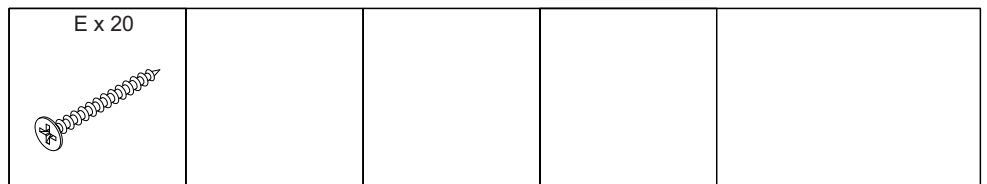
STEP 11



100%



STEP 12



100%

