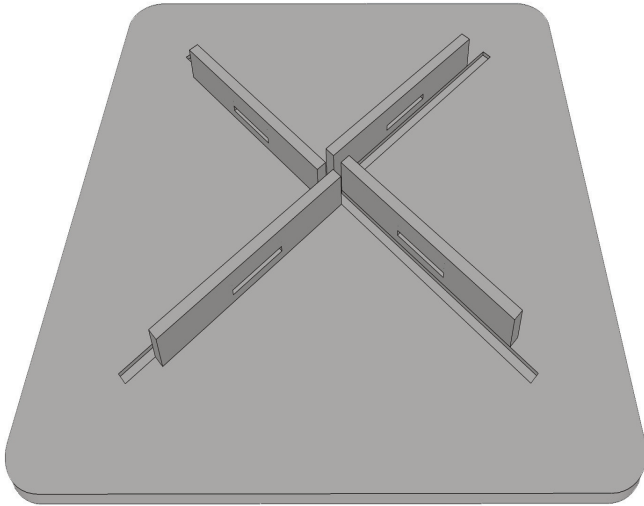


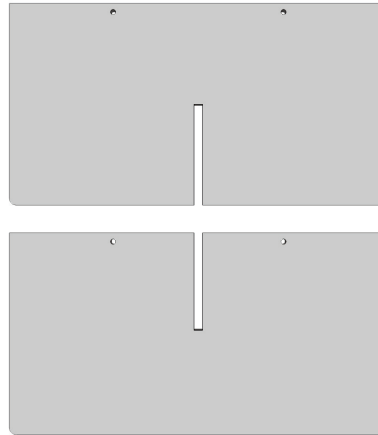
WD21800 ASSEMBLY INSTRUCTIONS

Parts:

Table



(2) Legs



Hardware:

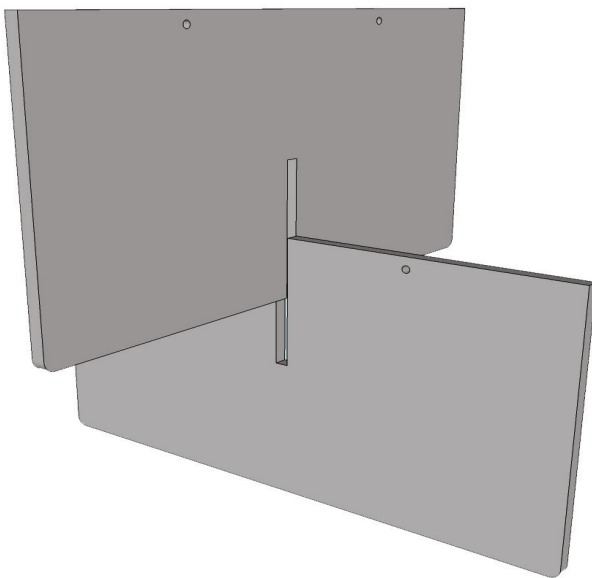
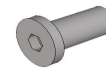
(4) Hex
Screws



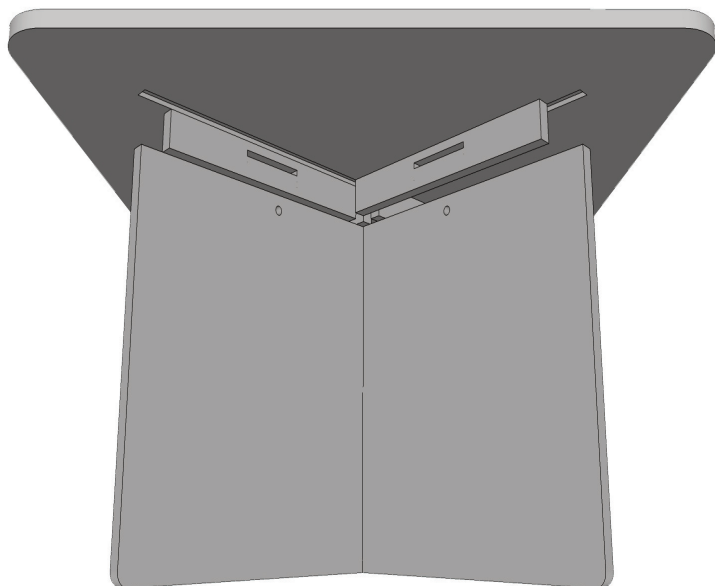
(2) Allen wrenches



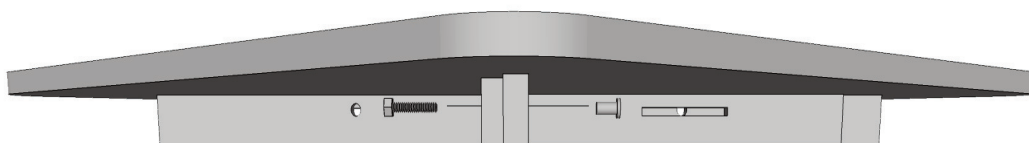
(4) Hex Caps



Step 1: Assemble **Legs** together by sliding the cutout of one into the cutout of another. Sides of legs with holes should be the higher horizontal edge for the next step.



Step 2: Place **Table** on top of leg assembly. Align dados in underside of Table with edges of leg pieces. Sides of legs with holes should be closest to the underside of table. Do not attempt to move cleats on underside of table.



Step 3: Attach **Table Top** to **Leg Assembly** using **Hex Screws** from supplied hardware. Align slots in cleats with holes in leg assembly and insert screw. Hand tighten screw into **Hex Cap** inserted from other side. Continue repeating **Step 3** until all four cleats are attached to the leg assembly with hex screws and caps.



Step 4: Tighten down all screws snugly. Assembly is now complete. **DO NOT OVER-TIGHTEN. DO NOT DRILL.**