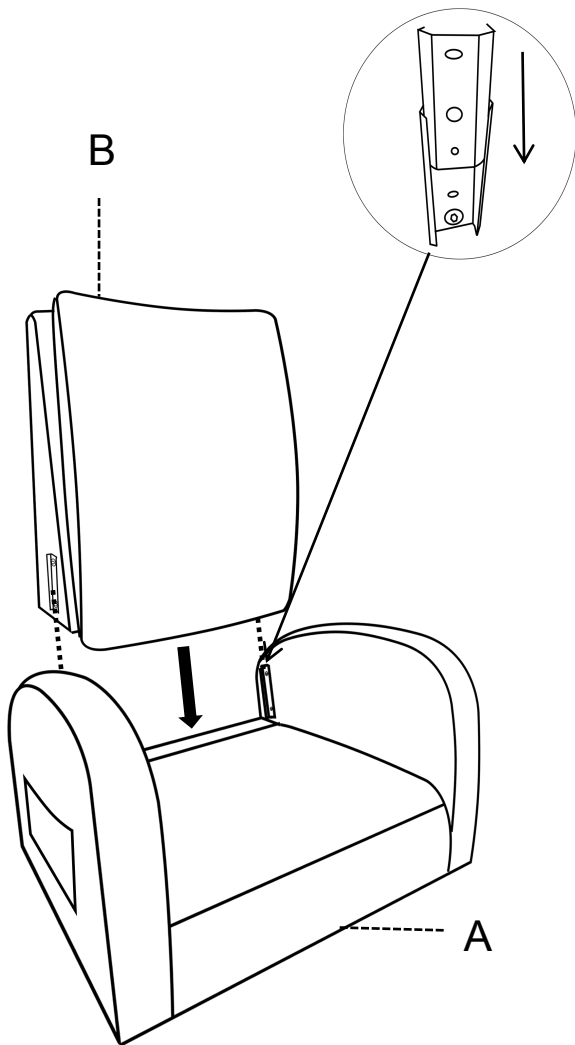
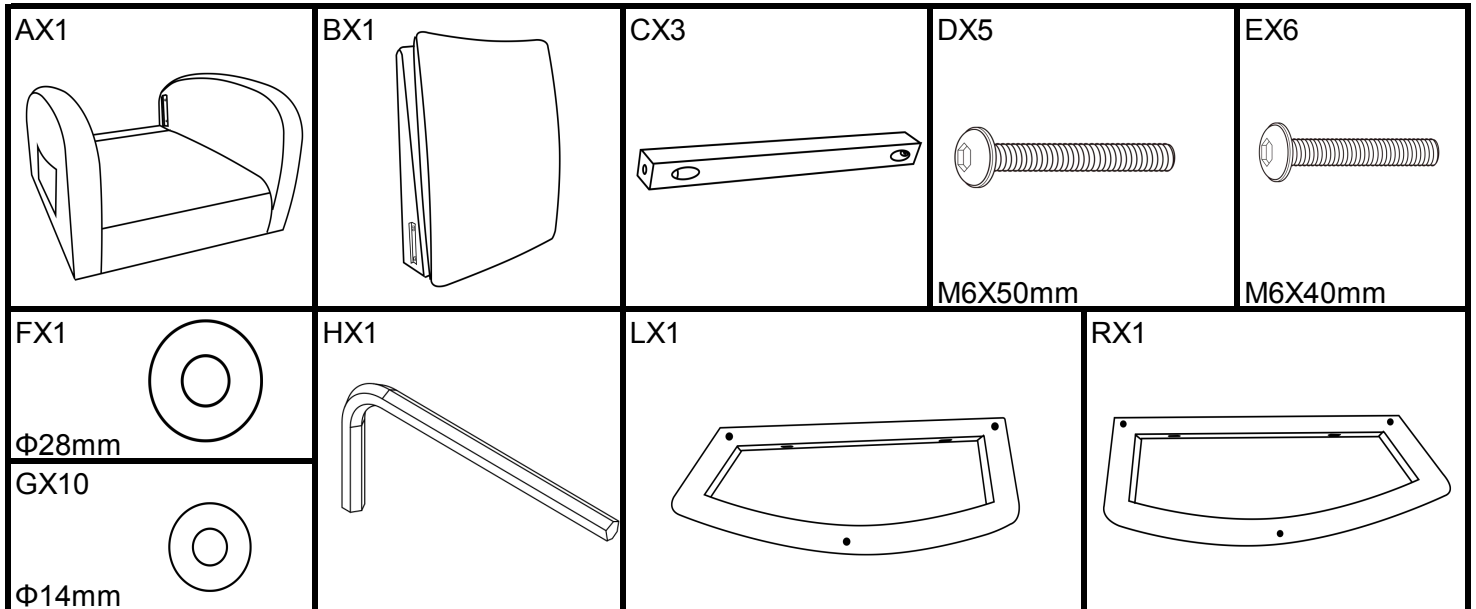
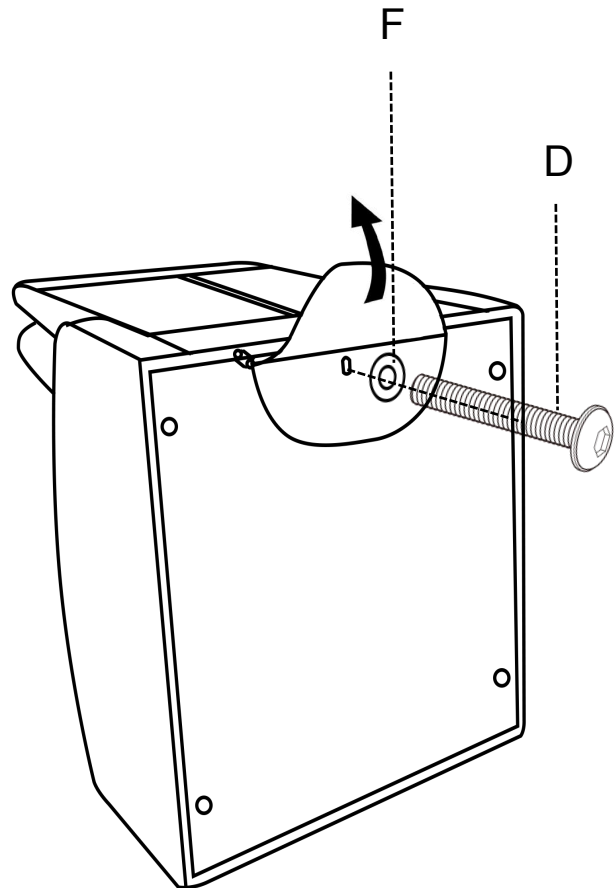


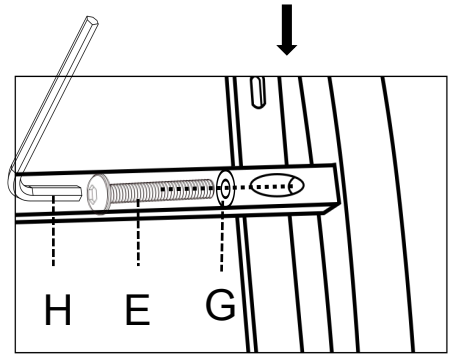
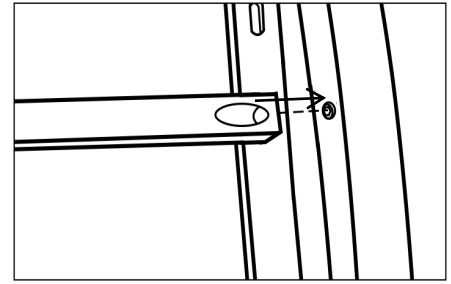
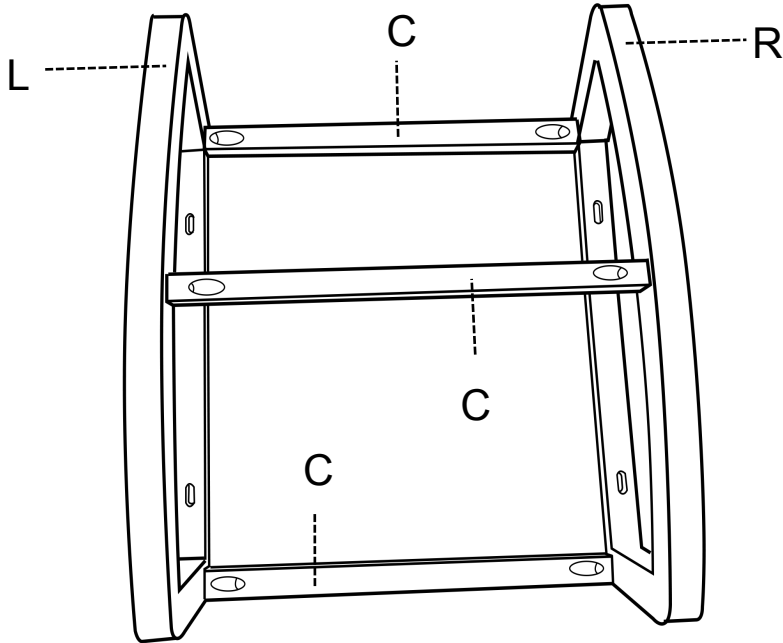
ASSEMBLY INSTRUCTION



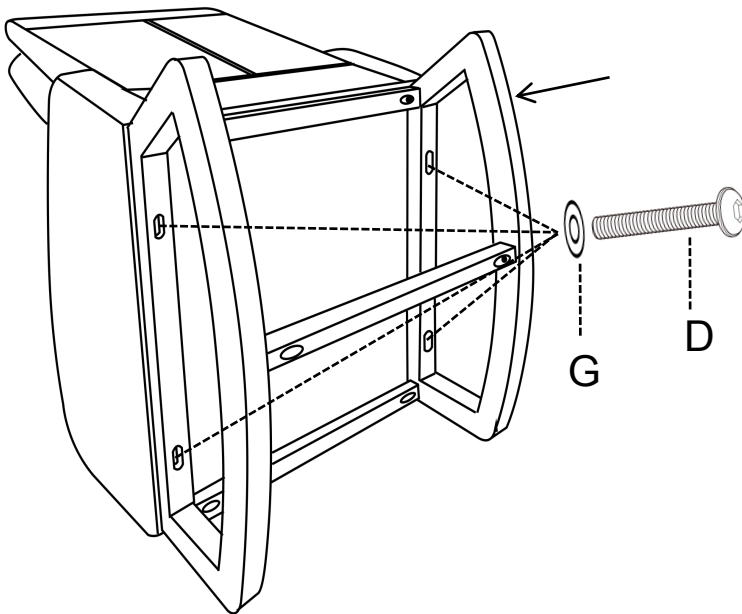
1. Attach the Seat Back(B) to the Seat Base(A) until the Seat Back does not shake.



2. As shown in the figure. Place the bottom of the product upwards and align the holes to install the Seat Back(B).

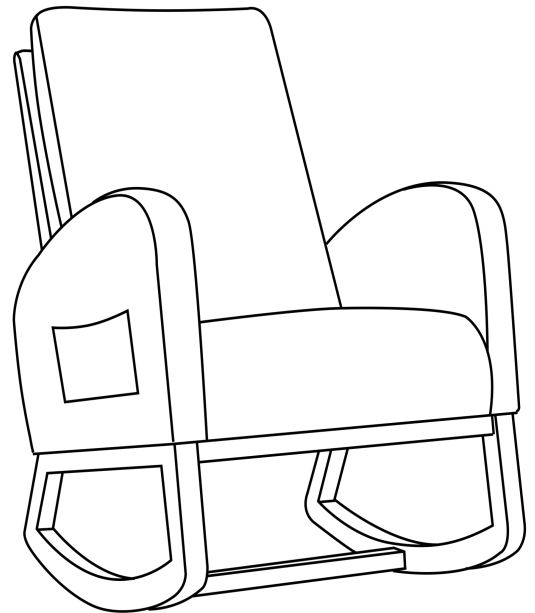


3. Attach Front Foot Rail (Part C) ,Middle Foot Rail(Part C) and Back Foot Rail (Part C) to Left Rocking Foot (Part L) and Right Rocking Foot (Part R) using (6) Φ 14mm Washers (Part G) and (6) M6 x 40 mm Bolts (Part E) . Tighten with the M5 Allen Wrench(H).



4. Attach the assembly from step 3 to the Seat Base using (4) Φ 14mm Washers (Part G) and (4) M6x50mm Bolts (Part D), tighten with the M5 Allen Wrench(H).

5. FINISH!



ATTENTION:

1. Please check the manual carefully and make sure you have received all the parts.
2. If there is any missing, please let us know the letters of the parts you need.
3. If there is any damage, please send clear photos to us, we will check and offer you the best solution soon.