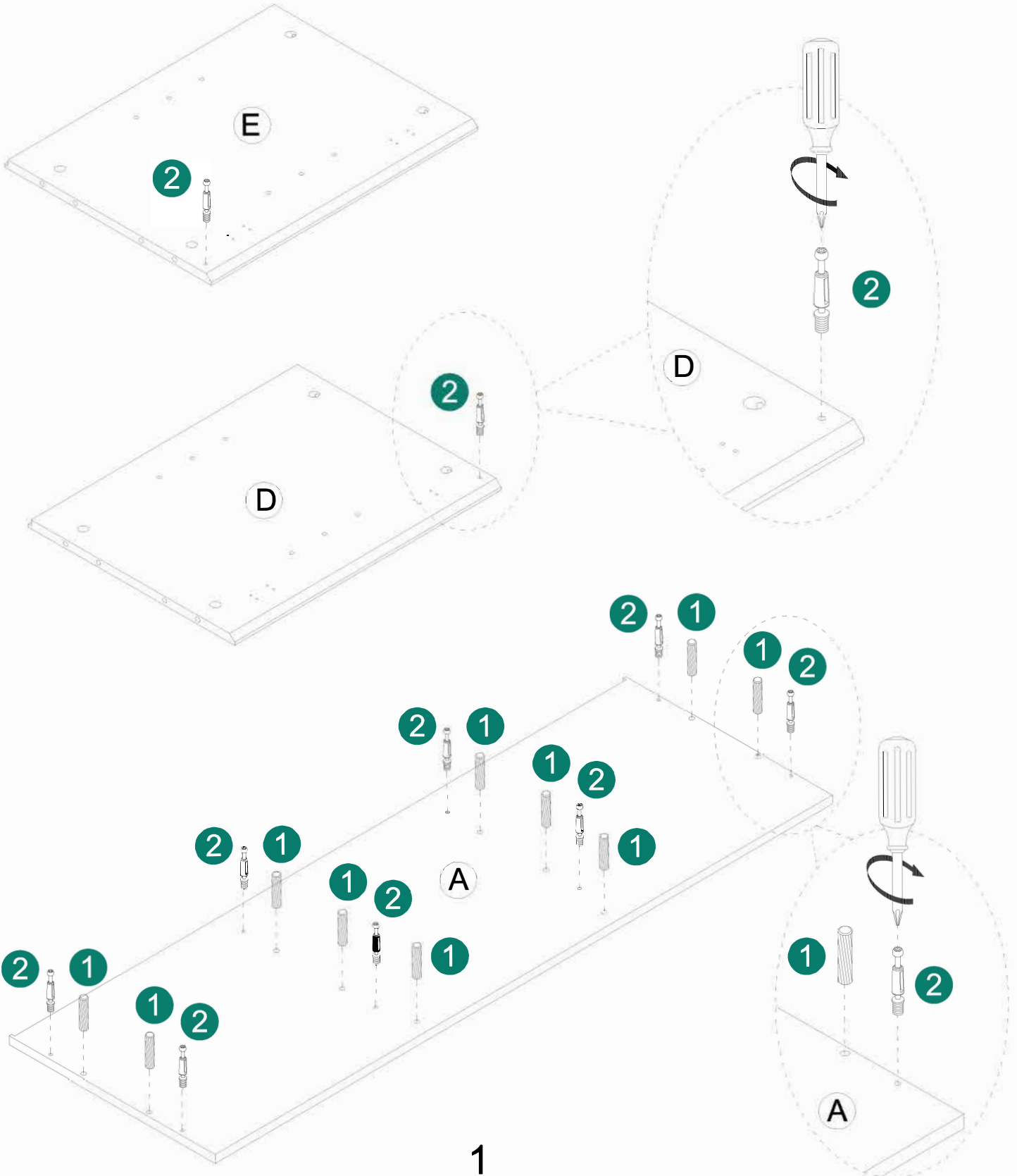
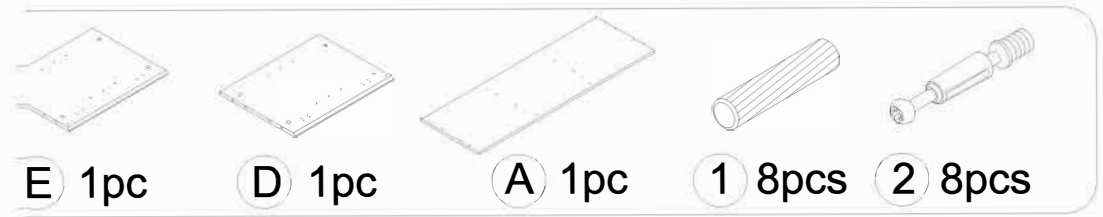
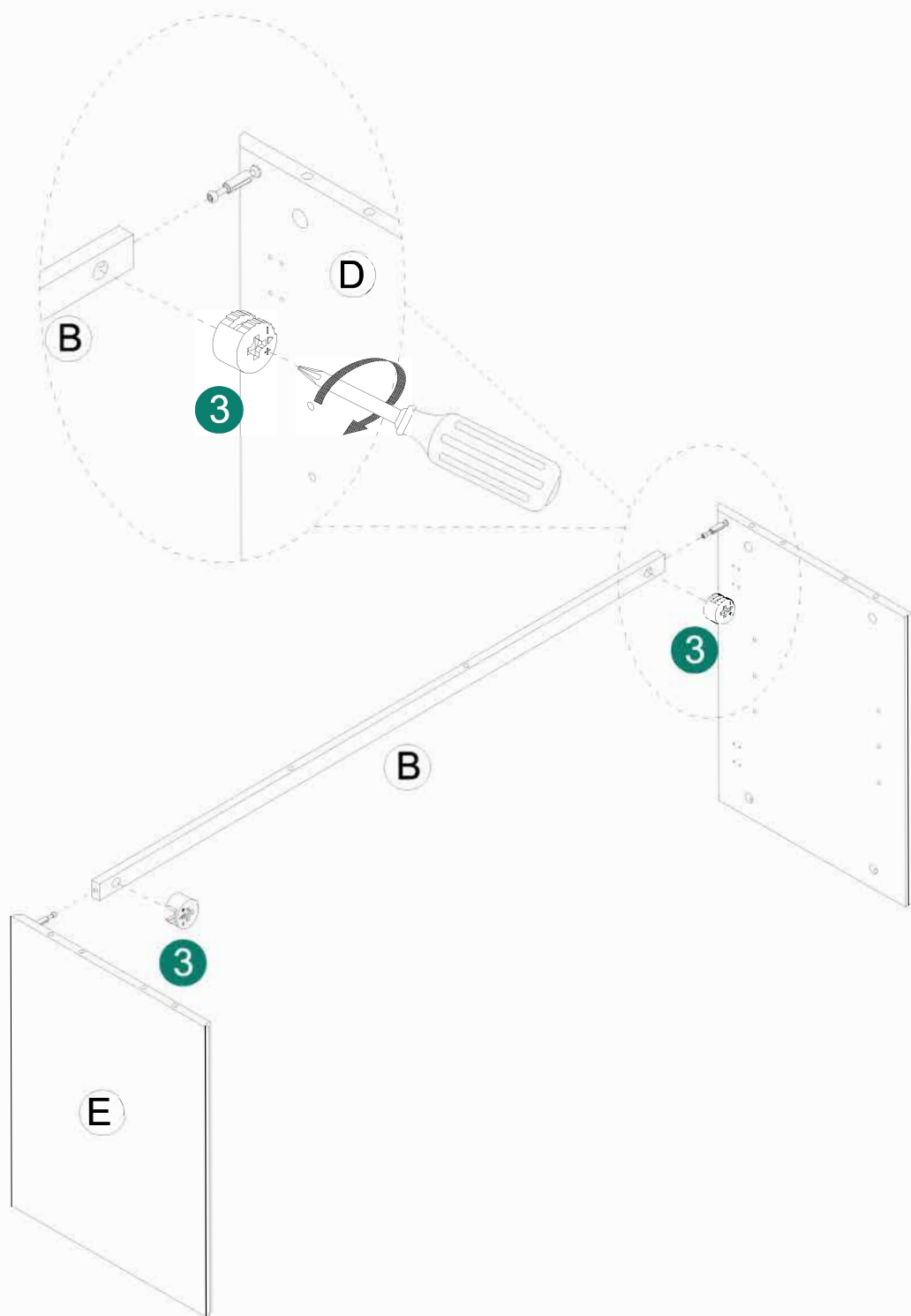
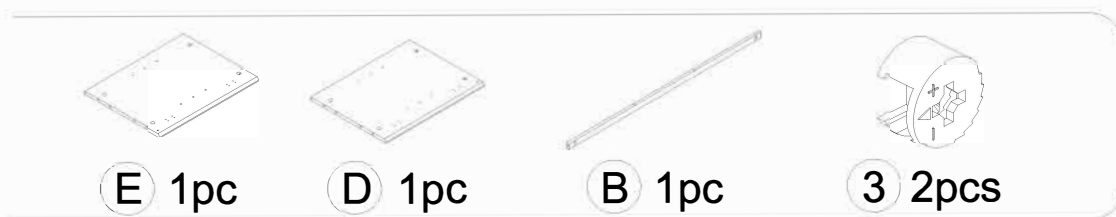


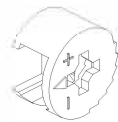
ASSEMBLY INSTRUCTIONS



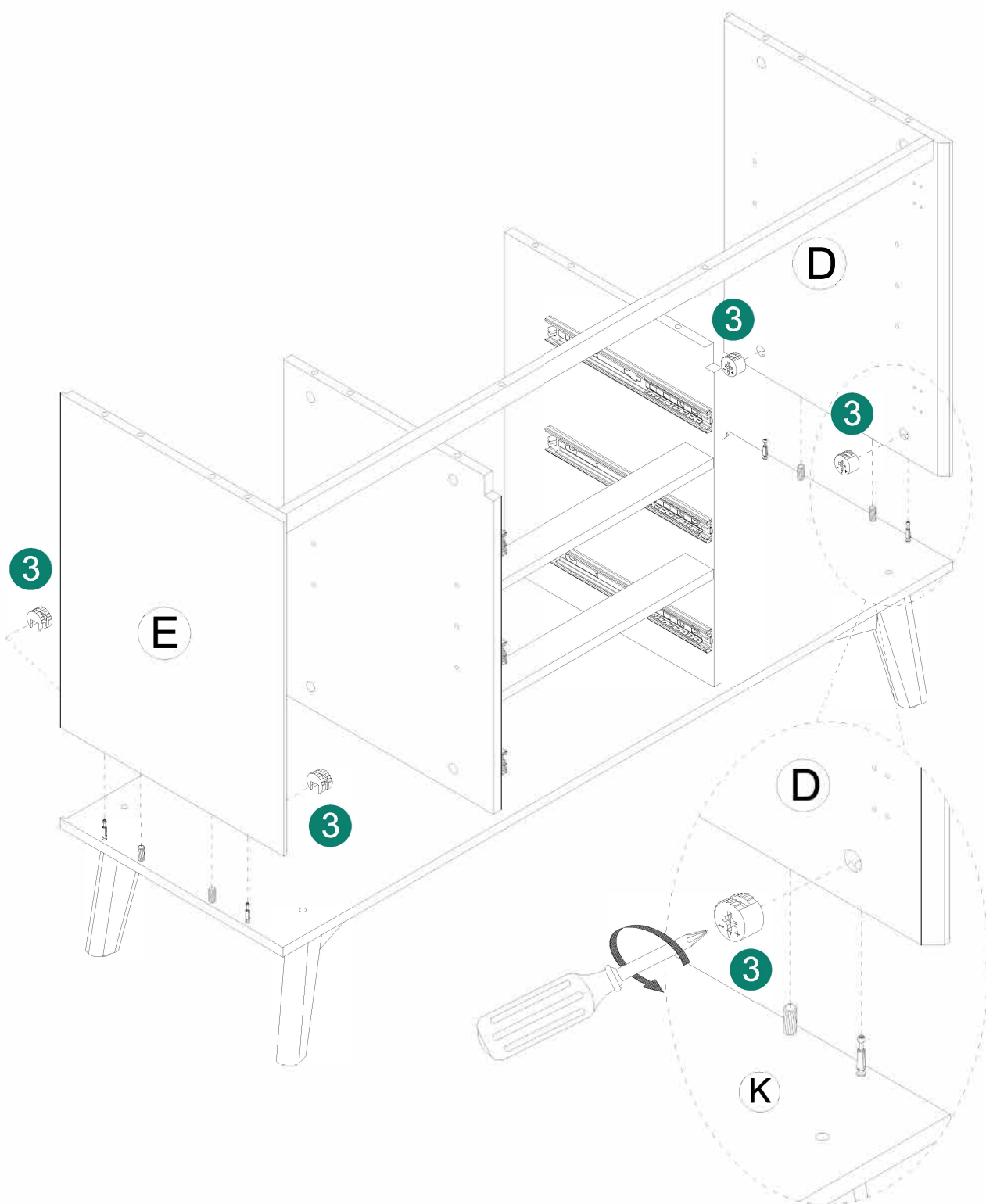
ASSEMBLY INSTRUCTIONS



ASSEMBLY INSTRUCTIONS



3 4pcs



ASSEMBLY INSTRUCTIONS



I 1pc



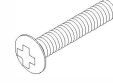
J 1pc



7 8pcs



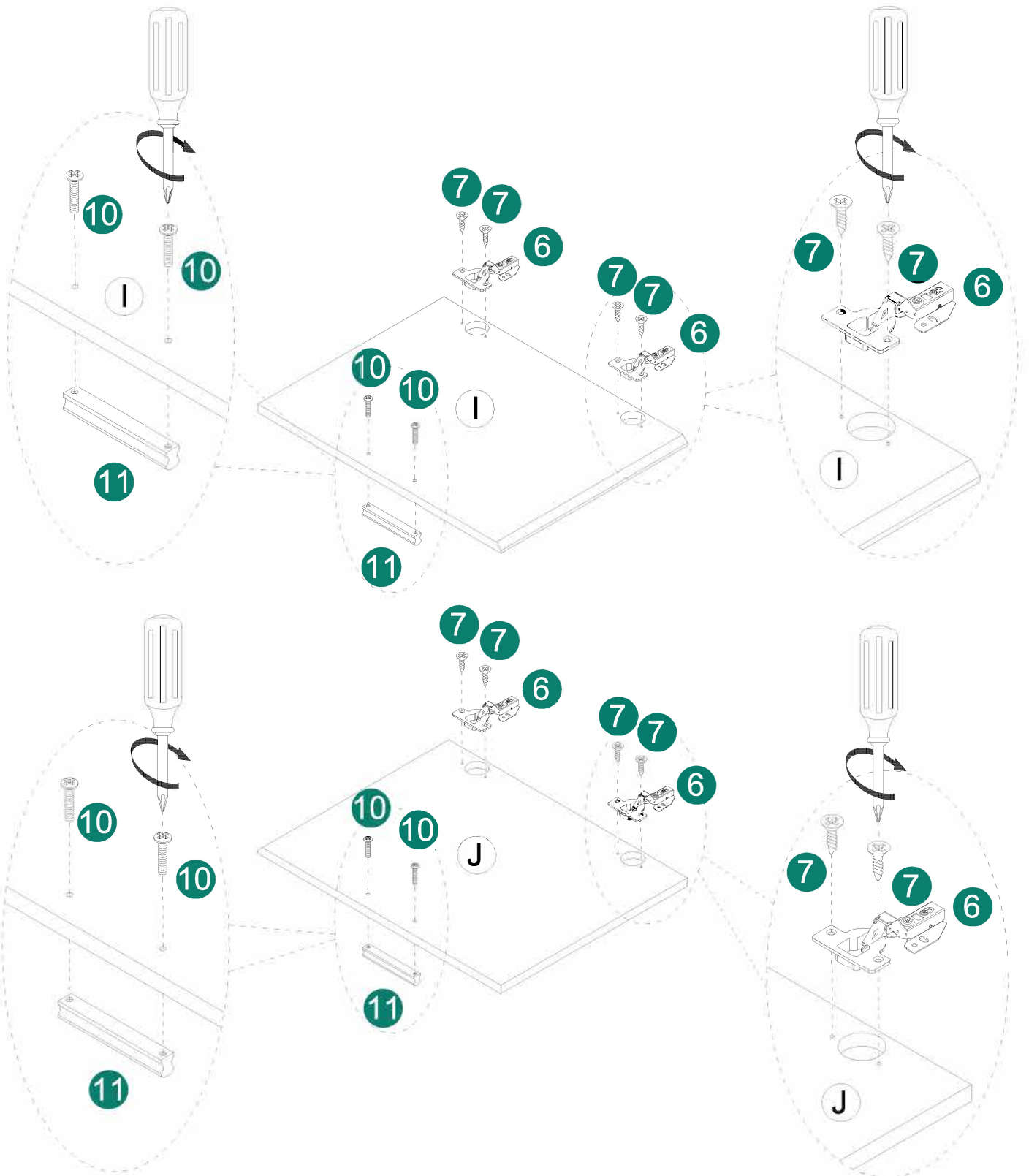
6 4pcs



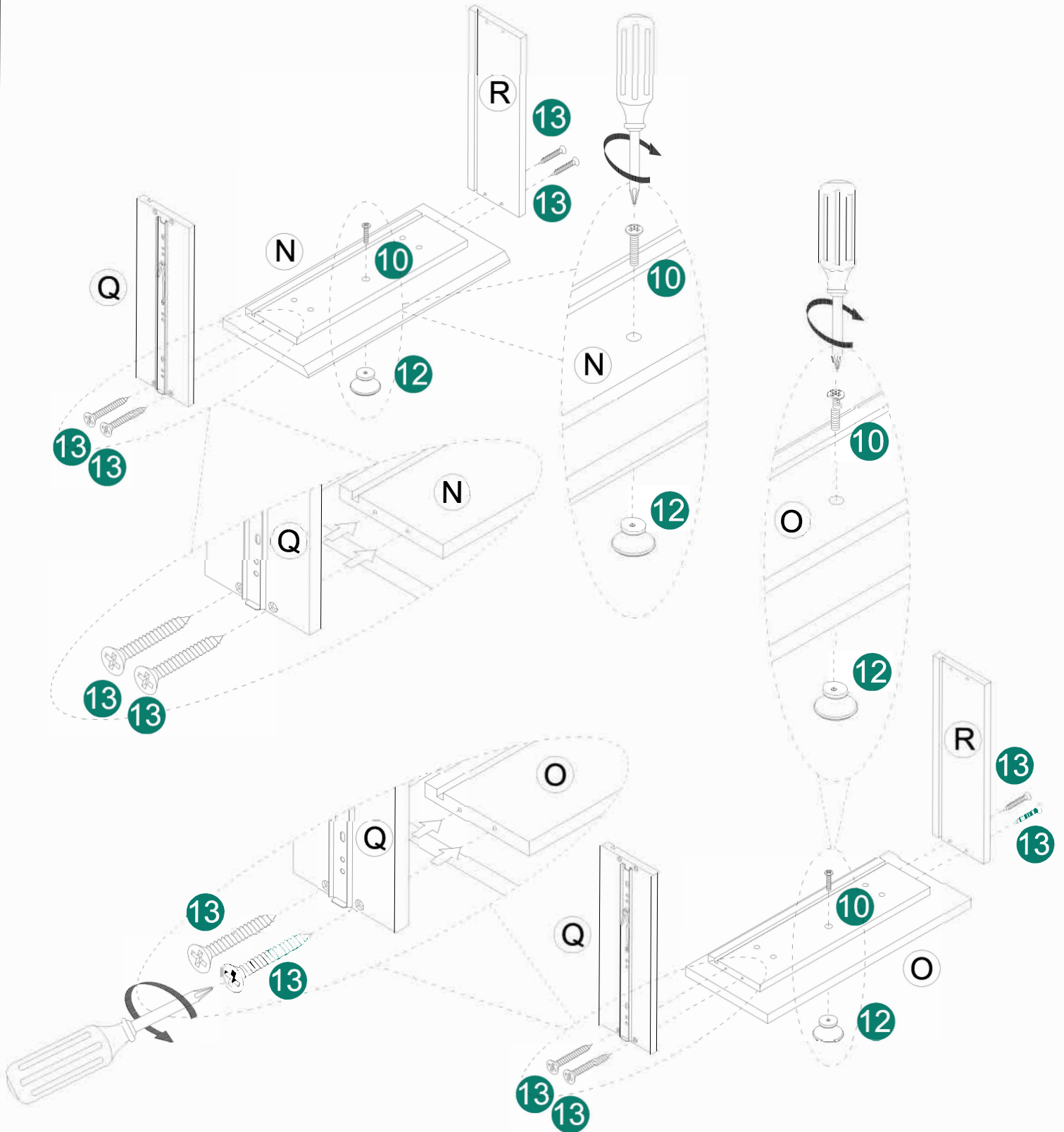
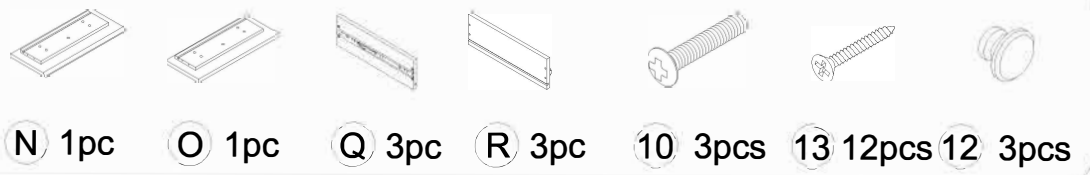
10 4pcs



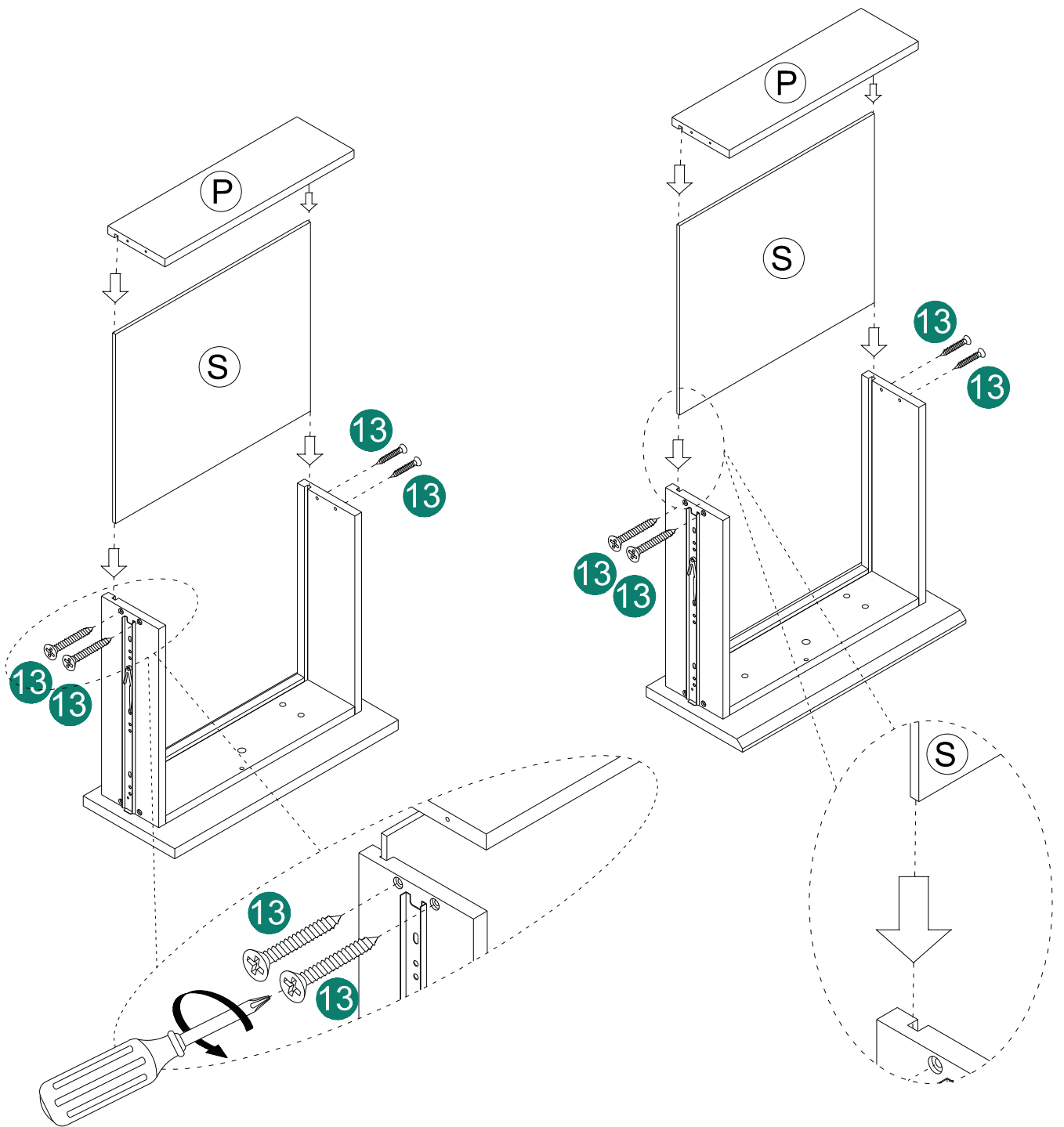
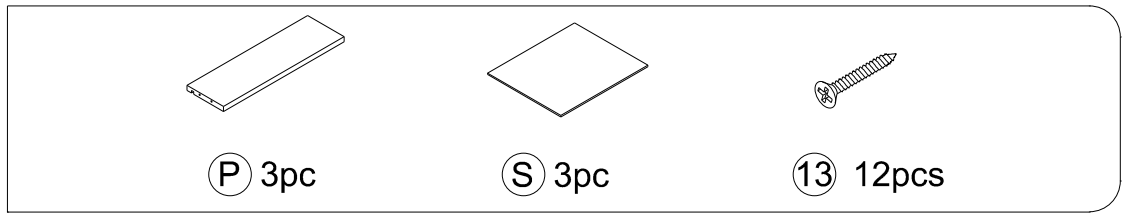
11 2pcs



ASSEMBLY INSTRUCTIONS



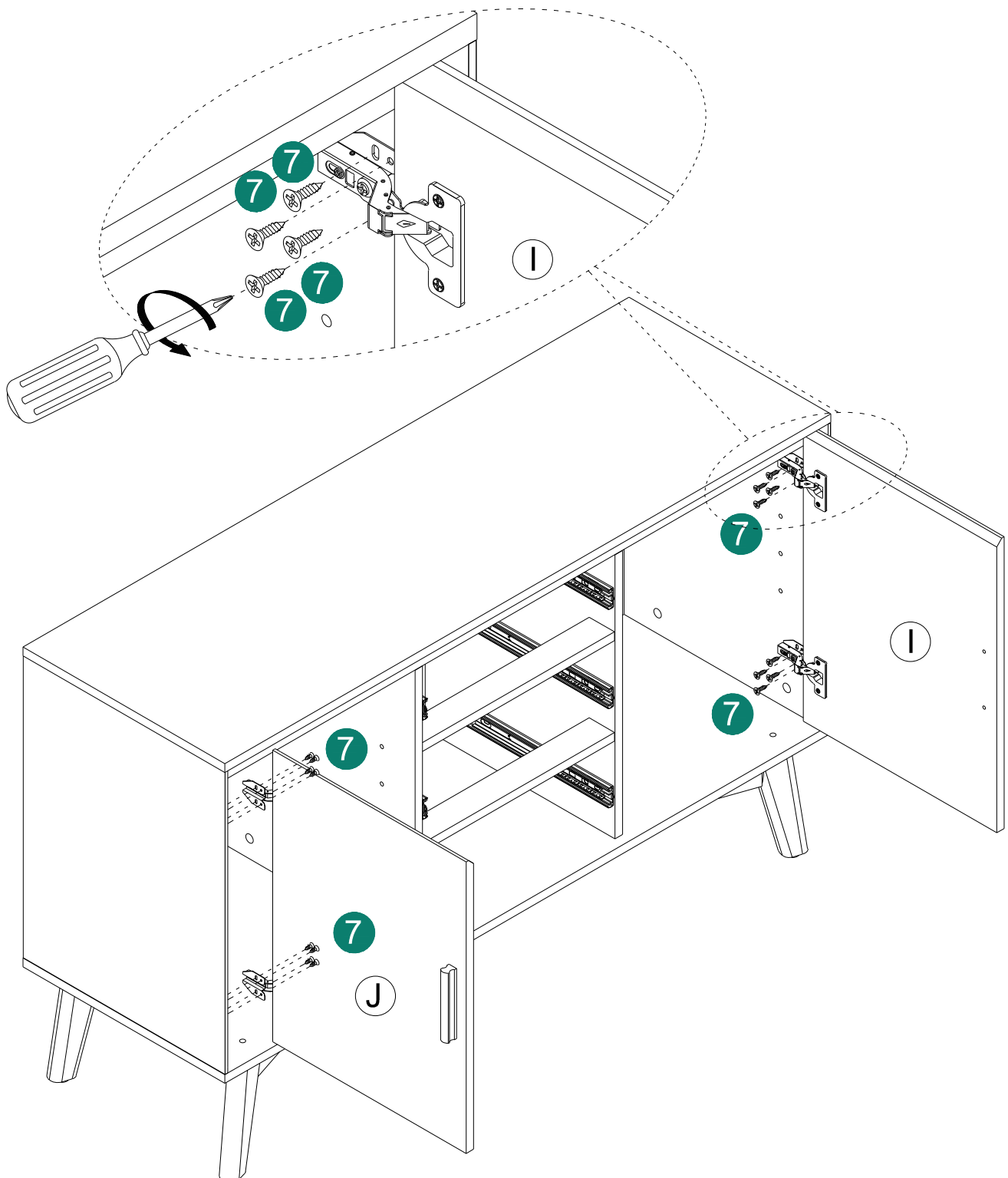
ASSEMBLY INSTRUCTIONS



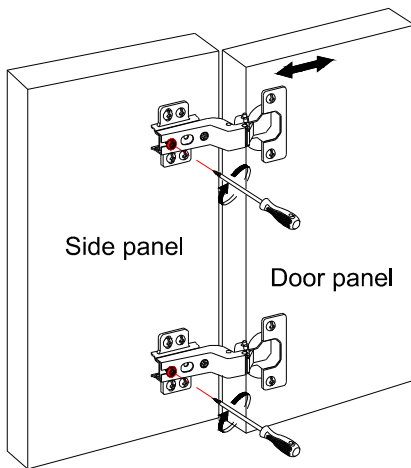
ASSEMBLY INSTRUCTIONS



7 16pcs



ASSEMBLY INSTRUCTIONS

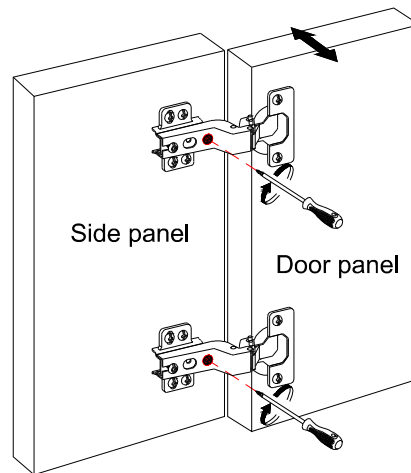


①

Front-to-Back Direction Adjustment:

Rotate the screws on the door hinges shown in the image. The door panel can be moved front-back.

Adjustment range: 4mm

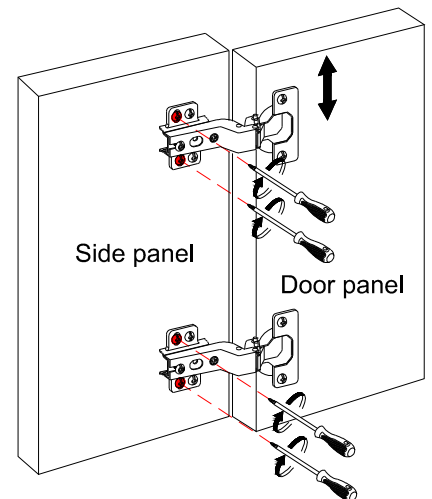


②

Left-Right Direction Adjustment:

Rotate the screws on the door hinges shown in the image. The door panel can be moved left-right.

Adjustment range: 3mm



③

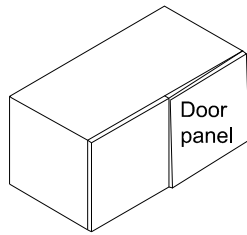
Up-Down Direction Adjustment:

Rotate the screws on the door hinges shown in the image. The door panel can be moved up-down.

Adjustment range: 4mm

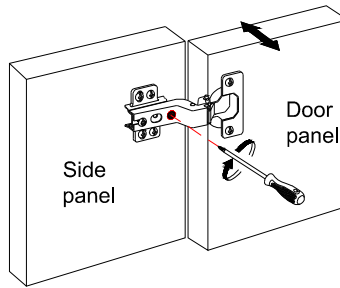
ASSEMBLY INSTRUCTIONS

Common Door Panel Issues:

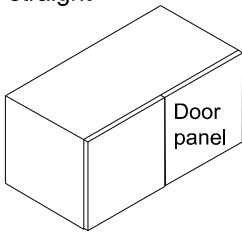
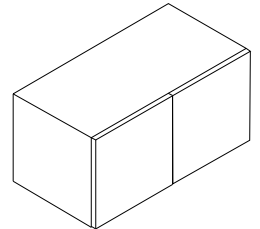


Door panel is not straight

Adjust the door hinges

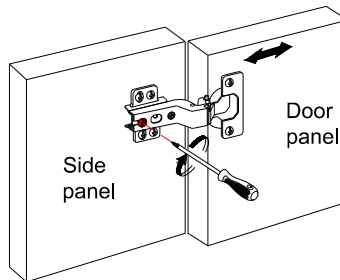


Finished

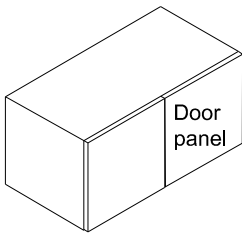
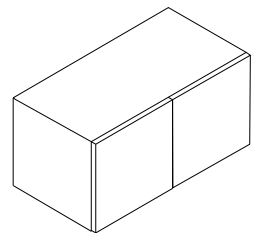


The gap between door panels is too large

Adjust the door hinges

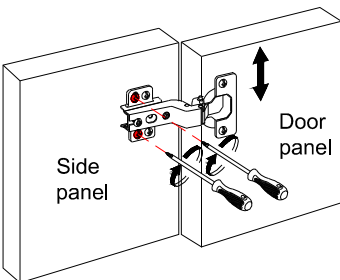


Finished

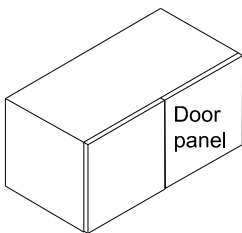
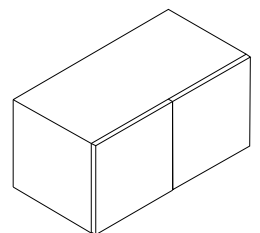


The door panels are not coplanar

Adjust the door hinges

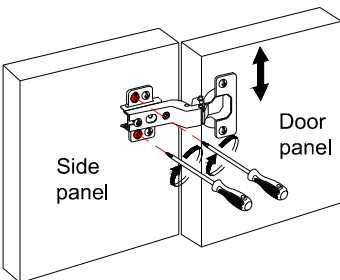


Finished

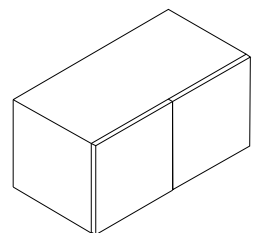


The two door panels are not at the same height

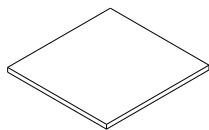
Adjust the door hinges



Finished



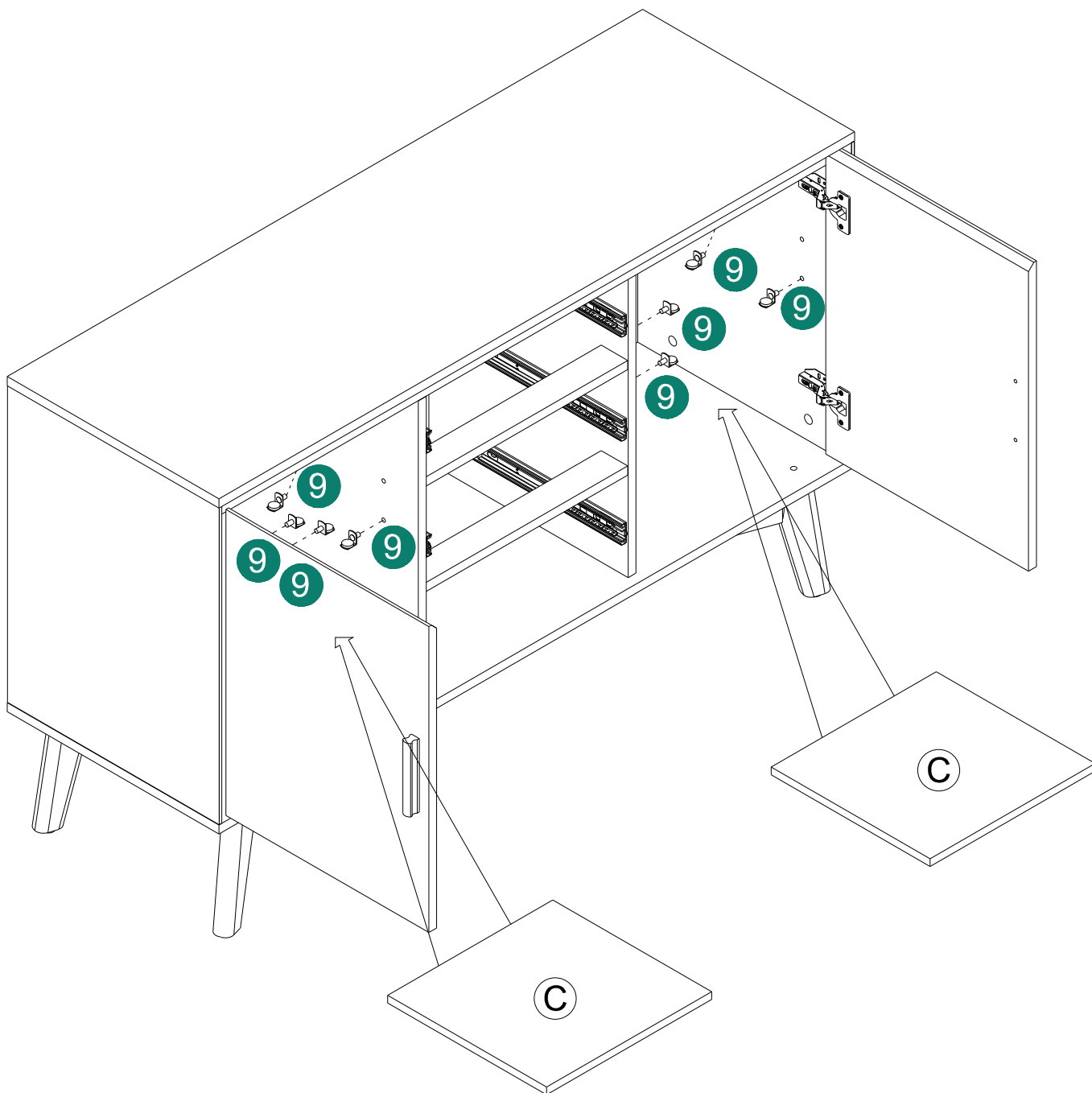
ASSEMBLY INSTRUCTIONS



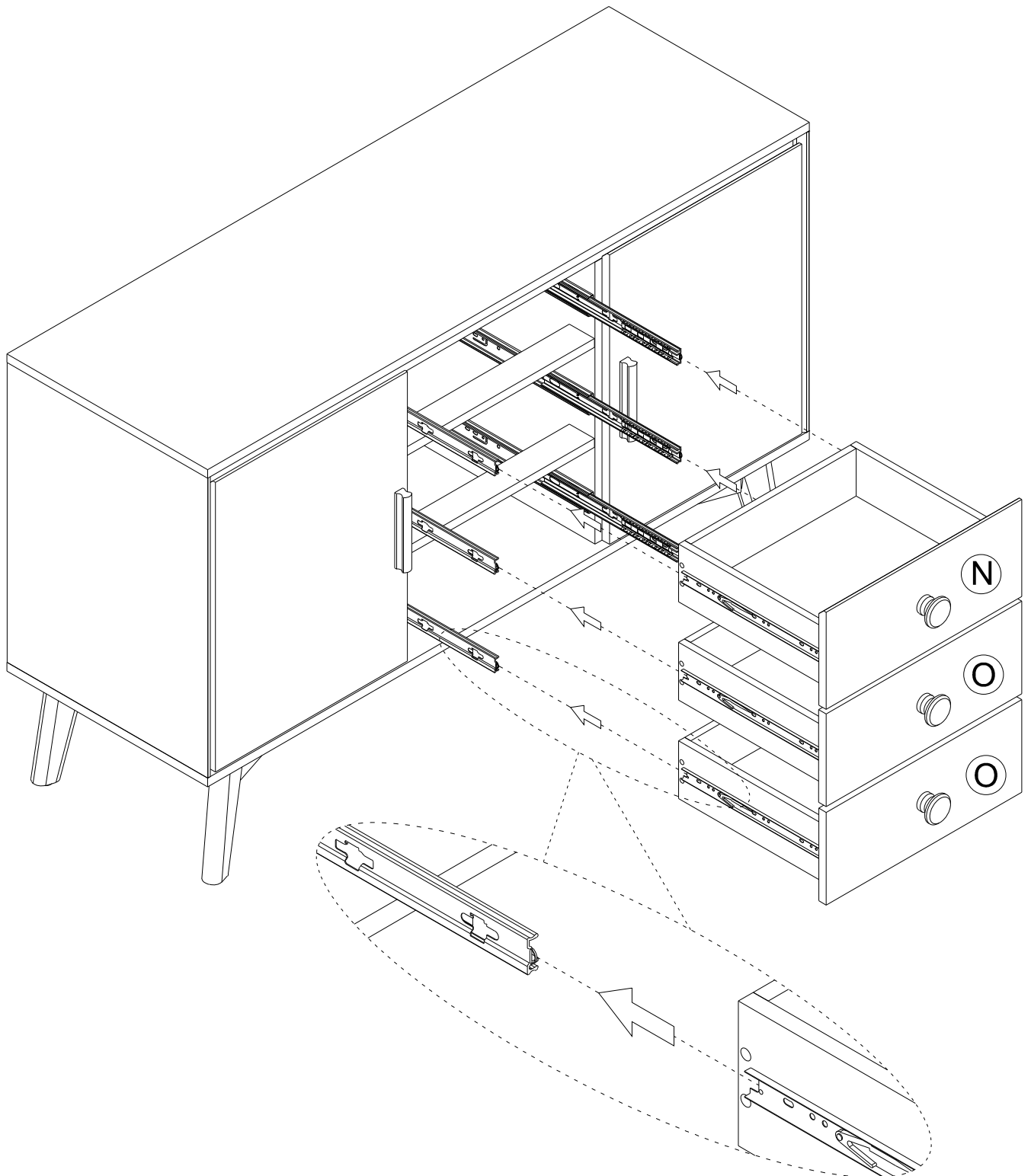
Ⓒ 2pc



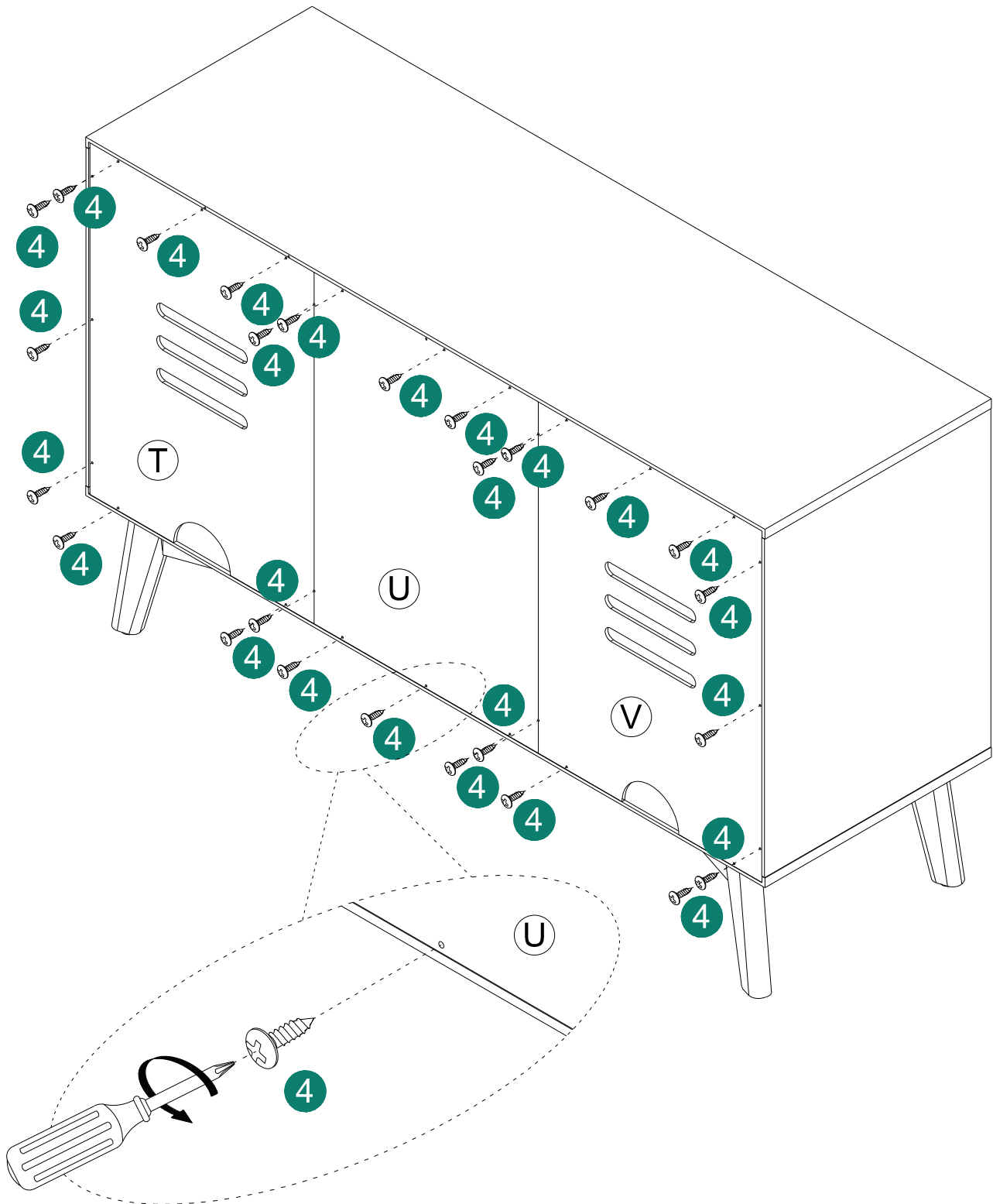
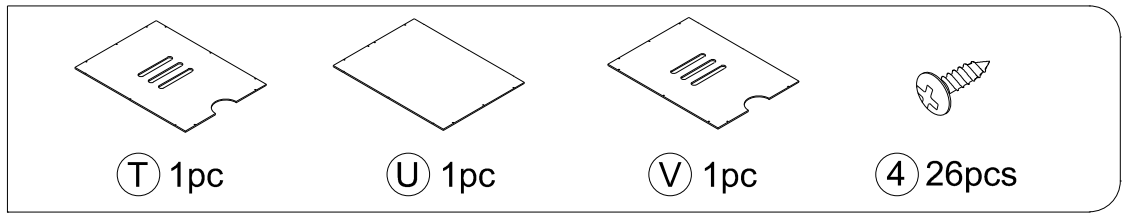
⑨ 8pcs



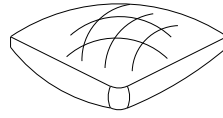
ASSEMBLY INSTRUCTIONS



ASSEMBLY INSTRUCTIONS

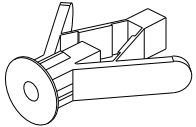


ASSEMBLY INSTRUCTIONS



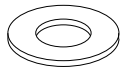
14 1set

A



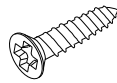
1pcs

B



2pcs

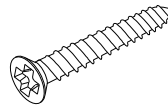
C



Ø8*3/4"

1pcs

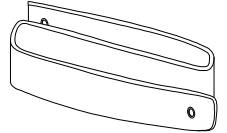
D



Ø8*1-1/2"

1pcs

E



1pcs

WALL

