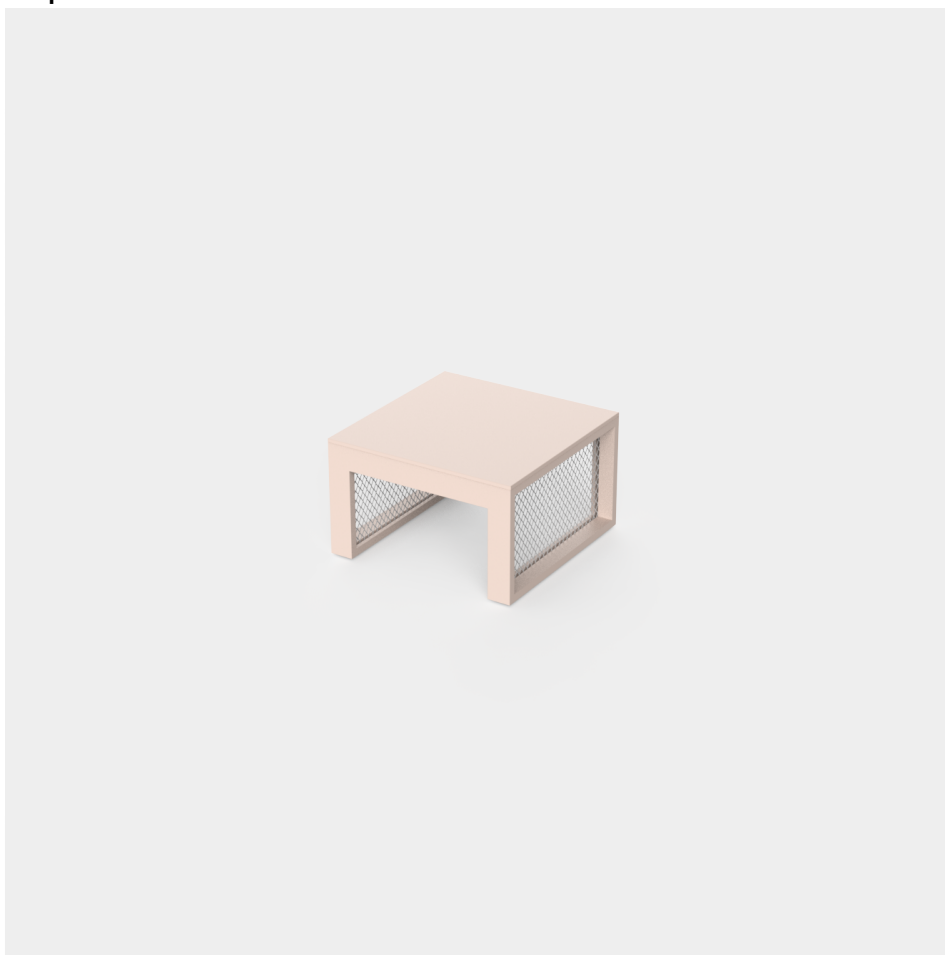


The factory table sun lounger

by Ramón Esteve

Vondom's The Factory collection, designed by Ramón Esteve, is inspired by the cast-iron architecture of New York. This collection combines an industrial aesthetic with modern comfort, offering a selection of furniture that brings character and sophistication to any outdoor space.

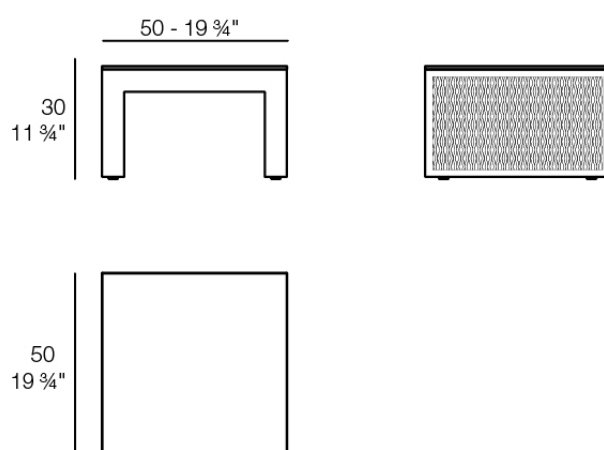


Info

Description

Composing of an aluminum profile and deployed mesh, all materials and components are resistant to extreme weather conditions. Available in different finishes.

Weight: 5.74 Kg



THE FACTORY Mesa Tumbona
THE FACTORY Table Sun Lounger

Finishes

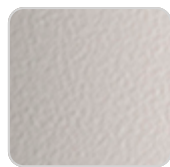
finishes

ALUMINIUM

Ref. 54623



white



ecru



smoked



tortora



cream



garnet



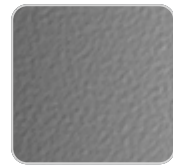
brown



green



blue



gray



anthracite



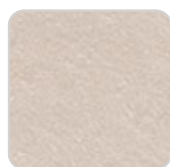
black

Lacquered aluminium profile.

tabletops

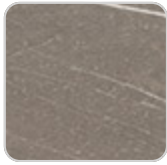
Solid Core

Ref. 54623TBL



VONDOM

white stone



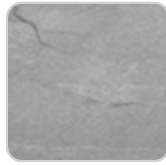
tortora stone

cream stone



black stone

green stone



gray stone

ecru stone



white (white edge)

smoked



ecru



tortora



cream



camel



clay



garnet



brown



green



blue



gray



anthracite



ocean

Solid Core wood Ref. 54623TBL



oak1



oak2

Ambients



