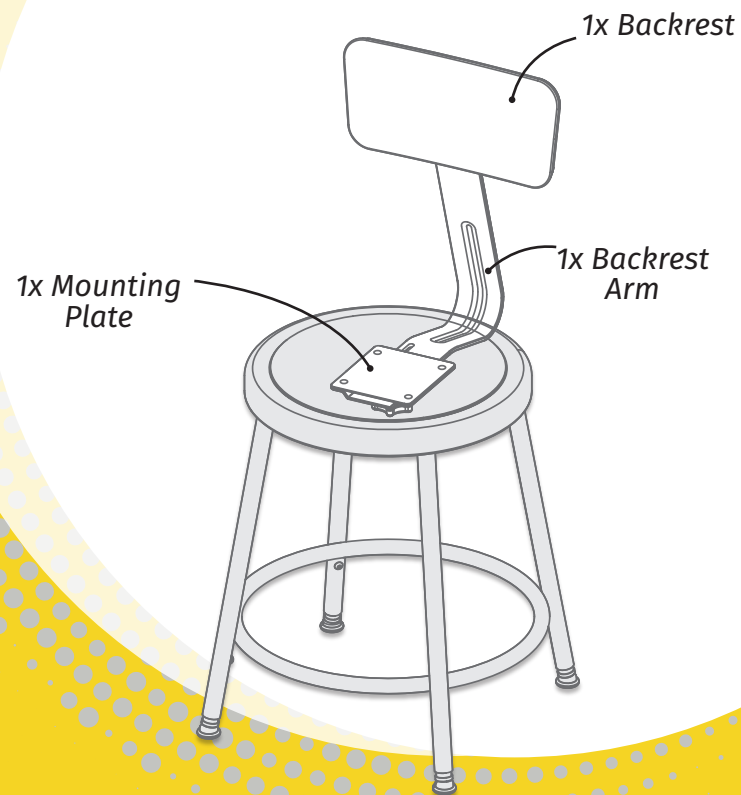


ASSEMBLY INSTRUCTIONS

STOOL

BACKREST INSTALLATION



INCLUDED HARDWARE



4x Hex Flange
Phillips Screw



1x Bolt



1x Star Knob



1x Spring Lock
Washer

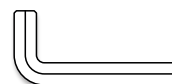


1x Washer



1x Screw

TOOLS NEEDED



Allen Wrench



Pliers



Phillips Screw
Driver

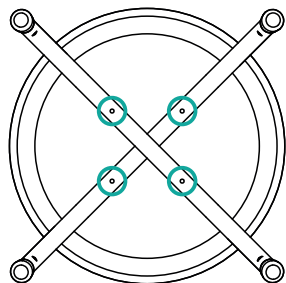


13-32
Ratchet Driver

Dear Customer, Thank you for your purchase! Although extreme care goes into manufacturing & packaging of this product, mistakes are possible. If you encounter any missing parts or difficulty in assembly, please contact our customer service Toll Free at 1-800-261-4112 or info@nationalpublicseating.com for courteous & immediate resolution to your problem.

1

Turn stool upside down onto an elevated flat sturdy surface. Identify the four center holes closest to the X (Where legs cross).

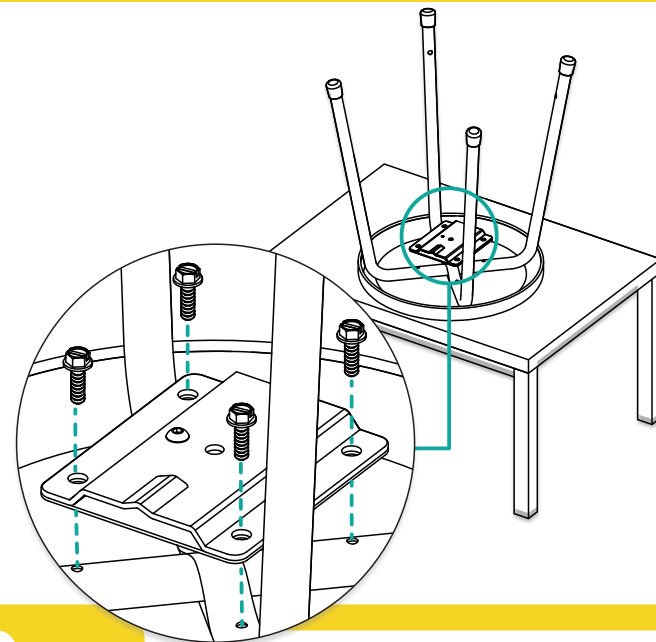


2

Place the Mounting Plate flat side down on the point where the bars cross, align the four holes and drive the 4 Hex Flange Phillips Screws through mounting plate into crossbars.



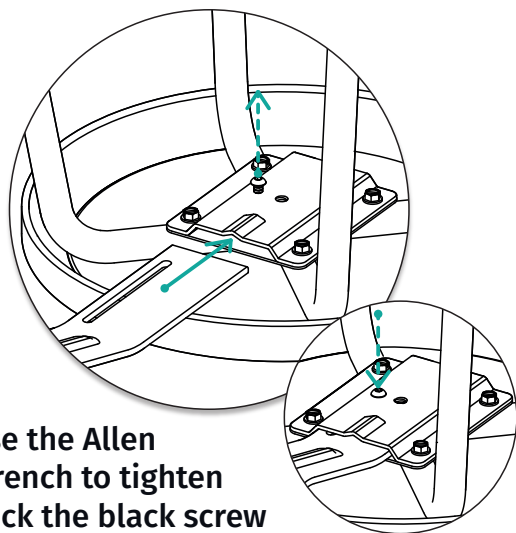
Ensure that all screws are fastened tightly.



3

Use the supplied Allen Wrench to loosen the black screw located on top of Mounting Plate.

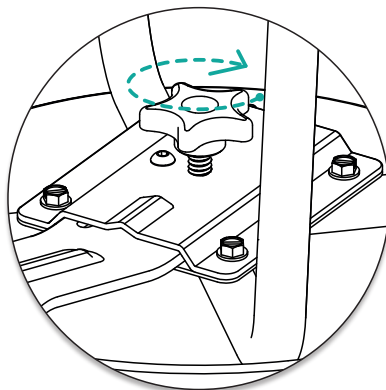
Insert the Backrest Arm with the slot facing the Mounting Plate, aligned with the black screw.



Use the Allen Wrench to tighten back the black screw on top of Mounting Plate

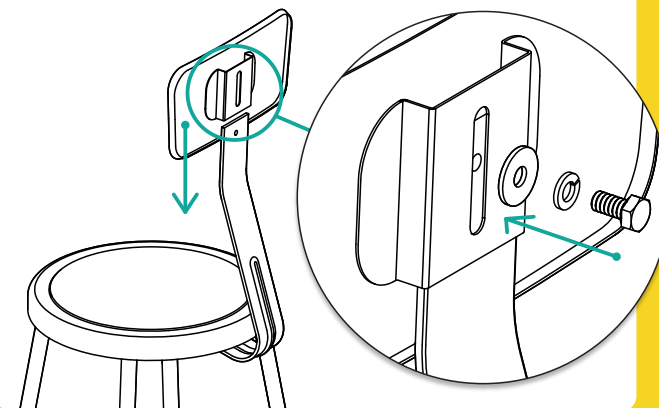
4

Screw the supplied Star Knob into the threaded hole center of the Mounting Plate and tighten securely at the desired horizontal location.



5

Turn the stool back to its upright position. Slide the Backrest on to the Backrest Arm, drive the supplied Bolt and Washers thru the slot of the Backrest and into the threaded hole on the Backrest Arm.



Double check all screws to be tightened securely before use. Check all screws periodically. Failure to completely tighten the screws may result in tipping and possible injury!

Congratulations, your stool with backrest is now assembled and ready to be used!