



Test Report

No.: T52510340678TY-01

Date: OCT 24, 2025

Page 1 of 35

BRC TOY LLC
11937 DENTON DR,STE -100, DALLAS,TEXAS -75234

This report supersedes all the previous documents bearing the test report number T52510340678TY

The following samples were submitted and identified by/on behalf of the client as:

FIAT 500 PUSH CAR WHITE & FIAT 500 PUSH CAR PINK

Item No.	:	850017059771 & 850017059764
Amazon ASIN No	:	B0977PS6LJ & B0977R5TQG
Manufacturer	:	DONGGUAN CHILOKBO TOYS COMPANY LIMITED
Country of Origin	:	CHINA
Country of Destination	:	CANADA, UNITED STATES
Labeled Age Grading	:	SUITABLE FOR CHILDREN 2 YEARS UP
Requested Age Grading	:	2-6 YEARS

Age Group Assessed by SGS	:	OVER 2 YEARS
As Per Age Guideline	:	
Age Group Applied in Testing	:	OVER 2 YEARS
Sample Receiving Date	:	SEP 11, 2025
Further Information Date	:	OCT 24, 2025
Testing Period	:	SEP 11, 2025 TO OCT 21, 2025



Unless otherwise agreed in writing, this document is issued by the Company subject to its General Conditions of Service printed overleaf, available on request or accessible at <http://www.sgs.com/en/Terms-and-Conditions.aspx> and, for electronic format documents, subject to Terms and Conditions for Electronic Documents at <http://www.sgs.com/en/Terms-and-Conditions/Terms-e-Documents.aspx>. Attention is drawn to the limitation of liability, indemnification and jurisdiction issues defined therein. Any holder of this document is advised that information contained hereon reflects the Company's findings at the time of its intervention only and within the limits of Client's instructions, if any. The Company's sole responsibility is to its Client and this document does not exonerate parties to a transaction from exercising all their rights and obligations under the transaction documents. This document cannot be reproduced except in full, without prior written approval of the Company. Any unauthorized alteration, forgery or falsification of the content or appearance of this document is unlawful and offenders may be prosecuted to the fullest extent of the law. Unless otherwise stated the results shown in this test report refer only to the sample(s) tested and such sample(s) are retained for 30 days only.

Attention: To check the authenticity of testing / inspection report & certificate, please contact us at telephone:(86-755) 8307 1443, or email: CN.Doccheck@sgs.com

SGS-CSTC Shenzhen Technical Services Co., Ltd.
Shenzhen Branch Testing Center Hardlines

Room 101-501, Plant 4 & Room 101, Plant 2 & Room 101, Plant 3 & Room 301-501, Plant 3, Jilanghao (Banlian) Industrial Plant Area, No.430, Jilua Road, Banlian Community, Banlian Street, Longgang District, Shenzhen, Guangdong, China 518129 www.sgs.com.cn
中国·广东·深圳市龙岗区坂田街道坂田社区吉华路430号江源(坂田)工业厂区厂房4号 101-901、2号101、3号101、3号301-501 邮编: 518129 t:(86-755) 25328888 sgs.china@sgs.com

Test Requested		Conclusion
1.	For compliance with test requirement of the Physical & Mechanical, Flammability test requirement of Title 16, Code of Federal Regulations, Chapter II – Consumer Products Safety Commission of U.S.A (Except changer)	--
	Physical and mechanical tests consisting US CPSC 16 CFR 1500.48, US CPSC 16 CFR 1500.49 and US CPSC 16 CFR 1501: -US CPSC 16 CFR 1500.48 – Technical requirements for determining a sharp point in toys and other articles intended for use by children under 8 years of ages -US CPSC 16 CFR 1500.49 – Technical requirements for determining a sharp metal or glass edge in toys and other articles intended for use by children under 8 years of age -US CPSC 16 CFR 1501 – Method for identifying toys and other articles intended for use by children under 3 years of age which present choking, aspiration, or ingestion hazards because of small parts	PASS
	US CPSC 16 CFR 1500.44 – Method for determining extremely flammable and flammable solids	PASS
2.	Title 16, Code of Federal Regulations, Chapter II - Consumer Products Safety Commission of U.S.A. - Part 1303 - Ban of Lead - Containing Paint and Certain Consumer Products Bearing Lead - Containing Paint – Lead Content	PASS
3.	Tracking label per section 14 [15 U.S.C. § 2063], (a)(5)(A) of the Consumer Product Safety Act, and Consumer Product Safety Improvement Act (CPSIA) of 2008 section 103 tracking labels for children’s products.	PASS
4.	For compliance with the test requirement of ASTM F963-23 Standard Consumer Safety Specification on Toy Safety.	--
	ASTM F963-23 Standard Consumer Safety Specification for Toy Safety	PASS
5.	15 U.S.C. § 1278a and CPSIA section 101 - Total Lead content	--
	15 U.S.C. § 1278a and CPSIA section 101(f) (1) – Lead in paint/similar surface coating material	PASS
	15 U.S.C. § 1278a and CPSIA section 101(a) (2) – Lead in accessible substrate materials (Including Children’s Metal Jewelry)	PASS
6.	US 16 CFR Part 1307 – Phthalates	PASS



Unless otherwise agreed in writing, this document is issued by the Company subject to its General Conditions of Service printed overleaf, available on request or accessible at <http://www.sgs.com/en/Terms-and-Conditions.aspx> and, for electronic format documents, subject to Terms and Conditions for Electronic Documents at <http://www.sgs.com/en/Terms-and-Conditions/Terms-e-Documents.aspx>. Attention is drawn to the limitation of liability, indemnification and jurisdiction issues defined therein. Any holder of this document is advised that information contained hereon reflects the Company’s findings at the time of its intervention only and within the limits of Client’s instructions, if any. The Company’s sole responsibility is to its Client and this document does not exonerate parties to a transaction from exercising all their rights and obligations under the transaction documents. This document cannot be reproduced except in full, without prior written approval of the Company. Any unauthorized alteration, forgery or falsification of the content or appearance of this document is unlawful and offenders may be prosecuted to the fullest extent of the law. Unless otherwise stated the results shown in this test report refer only to the sample(s) tested and such sample(s) are retained for 30 days only.

Attention: To check the authenticity of testing / inspection report & certificate, please contact us at telephone:(86-755) 8307 1443, or email: CN.Doccheck@sgs.com

Test Requested	Conclusion
7. For compliance with the test requirement of Toys Regulations (SOR/2011-17) of Canada Consumer Product Safety Act (S.C.2010, c. 21).	--
Toys Regulations SOR/2011-17 of Canada Consumer Product Safety Act (S.C.2010, c. 21). (Including amendments SOR/2012-71, SOR/2016-195, SOR/2016-302, SOR/2018-138, SOR/2022-122 and SOR/2024-217)	PASS
8. Canada Consumer Product Safety Act (S.C. 2010, c. 21), Consumer Products Containing Lead Regulations, SOR/2018-83 – Total Lead content	PASS
9. Canada Surface Coating Materials Regulations (SOR/2016-193) (Including amendments SOR/2022-122) – Lead Content	PASS
10. Canada Phthalates Regulation (SOR/2016-188) (formerly restricted under SOR/2010-298) – Phthalates content	PASS

***** FOR FURTHER DETAILS, PLEASE REFER TO THE FOLLOWING PAGE(S) *****

Signed for and on behalf of
 SGS-CSTC Standards Technical
 Services Co., Ltd. Shenzhen Branch Testing Center




Xue Na, Ella
 Senior Engineer

Xiang Suqiong, Irene
 Dept. Manager

Scan to see the report



Unless otherwise agreed in writing, this document is issued by the Company subject to its General Conditions of Service printed overleaf, available on request or accessible at <http://www.sgs.com/en/Terms-and-Conditions.aspx> and, for electronic format documents, subject to Terms and Conditions for Electronic Documents at <http://www.sgs.com/en/Terms-and-Conditions/Terms-e-Document.aspx>. Attention is drawn to the limitation of liability, indemnification and jurisdiction issues defined therein. Any holder of this document is advised that information contained hereon reflects the Company's findings at the time of its intervention only and within the limits of Client's instructions, if any. The Company's sole responsibility is to its Client and this document does not exonerate parties to a transaction from exercising all their rights and obligations under the transaction documents. This document cannot be reproduced except in full, without prior written approval of the Company. Any unauthorized alteration, forgery or falsification of the content or appearance of this document is unlawful and offenders may be prosecuted to the fullest extent of the law. Unless otherwise stated the results shown in this test report refer only to the sample(s) tested and such sample(s) are retained for 30 days only.

Attention: To check the authenticity of testing / inspection report & certificate, please contact us at telephone:(86-755) 8307 1443, or email: CN.Doccheck@sgs.com

Results:

US CPSC

PHYSICAL AND MECHANICAL TESTS CONSISTING US CPSC 16 CFR 1500.48, US CPSC 16 CFR 1500.49 AND US CPSC 16 CFR 1501

AS SPECIFIED IN PHYSICAL AND MECHANICAL TESTS CONSISTING US CPSC 16 CFR 1500.48, US CPSC 16 CFR 1500.49 AND US CPSC 16 CFR 1501

	<u>No. of sample tested</u>	<u>Sharp point (16 CFR 1500.48)</u>	<u>Sharp edge (16 CFR 1500.49)</u>	<u>Small part (16 CFR 1501)</u>
As received	2	PASS	PASS	PASS
Impact test (16 CFR 1500.52b)	2	PASS	PASS	PASS
Bite test (16 CFR 1500.52c)	2	N/A	N/A	N/A
Flexure test (16 CFR 1500.53d)	0	N/A	N/A	N/A
Torque test (16 CFR 1500.53e)	2	PASS	PASS	PASS
Tension test (16 CFR 1500.52f)	2	PASS	PASS	PASS
Compression test (16 CFR 1500.53g)	2	PASS	PASS	PASS

US CPSC 16 CFR 1500.44 – METHOD FOR DETERMINING EXTREMELY FLAMMABLE AND FLAMMABLE SOLIDS

AS SPECIFIED IN US CPSC 16 CFR 1500.44 – METHOD FOR DETERMINING EXTREMELY FLAMMABLE AND FLAMMABLE SOLIDS

<u>Sample</u>	<u>Burning Rate (inch/sec)</u>
See sample description	DNI

Requirement:

A toy / component is considered a “flammable solid” if it ignites and burns with a self-sustaining flame at a rate greater than 0.10 in/sec along its major axis.



SGS-CSTC Shenzhen Technical Services Co., Ltd.
Shenzhen Branch Testing Center Hardlines

Unless otherwise agreed in writing, this document is issued by the Company subject to its General Conditions of Service printed overleaf, available on request or accessible at <http://www.sgs.com/en/Terms-and-Conditions.aspx> and, for electronic format documents, subject to Terms and Conditions for Electronic Documents at <http://www.sgs.com/en/Terms-and-Conditions/Terms-e-Documents.aspx>. Attention is drawn to the limitation of liability, indemnification and jurisdiction issues defined therein. Any holder of this document is advised that information contained hereon reflects the Company's findings at the time of its intervention only and within the limits of Client's instructions, if any. The Company's sole responsibility is to its Client and this document does not exonerate parties to a transaction from exercising all their rights and obligations under the transaction documents. This document cannot be reproduced except in full, without prior written approval of the Company. Any unauthorized alteration, forgery or falsification of the content or appearance of this document is unlawful and offenders may be prosecuted to the fullest extent of the law. Unless otherwise stated the results shown in this test report refer only to the sample(s) tested and such sample(s) are retained for 30 days only.

Attention: To check the authenticity of testing / inspection report & certificate, please contact us at telephone:(86-755) 8307 1443, or email: CN.Doccheck@sgs.com

Room 101-501, Plant 4 & Room 101, Plant 2 & Room 101, Plant 3 & Room 301-501, Plant 3, Jilanghao (Banlian) Industrial Plant Area, No.430, Jilang Road, Banlian Community, Banlian Street, Longgang District, Shenzhen, Guangdong, China 518129 www.sgs.com.cn
中国·广东·深圳市龙岗区坂田街道坂田社区吉华路430号江源(坂田)工业厂区厂房4号 101-901、2号101、3号301-501 邮编: 518129 t:(86-755) 25328888 sgs.china@sgs.com

CPSC 16 CFR 1303 - Lead in Paint/Similar Surface Coating Materials

Method: With reference to CPSC-CH-E1003-09.1 - Standard Operating Procedure for Determining Lead (Pb) in Paint and Other Similar Surface Coatings

Test Item(s)	Lead (Pb)		
Permissible Limit (ppm)	90		
Specimen Description	Alias No.	Tracing No.	Result(s) (ppm)
1. Shiny silvery coating (Bodywork, light, steering wheel) + Multi-color coating on paper label (Sticker)	8	1	32
2. Silvery-grey coating on metal (Push handle) + Dull silvery-grey coating on metal (Push handle)	8	2	ND

- Note:
- ppm = parts per million
 - ND = Not Detected (lower than MDL)
 - MDL = Method Detection Limit = 20 ppm
 - 1% = 10000 mg/kg = 10000 ppm

The below note(s) is(are) applicable in case the relevant superscript(s) and symbol(s) was(were) shown in the result table:

- + Composite test has been performed as per client's request and the results are calculated using the minimum specimen weight
- ^Δ Test result is over the action limit as suggested by CPSC-CH-E1003-09.1. As the result is based on composite test and falls into an uncertain range, where "Pass" or "Fail" cannot be truly defined, "Interim-Fail" is given since the specimen may possibility fail according to the regulatory limit. Individual test is highly recommended to determine the exact Lead content in each component. The decision rule has prescribed in the regulation or standard, conformity reporting will base on the standard.
- * Exceeds Permissible Limit

As specified in tracking label per section 14 [15 U.S.C. § 2063], (a)(5)(A) of the Consumer Product Safety Act, and Consumer Product Safety Improvement Act (CPSIA) of 2008 section 103 tracking labels for children's products.

- Tracking label on the packaging: Present
- Tracking label on the product: Present

Note: The tracking label assessment was based on the submitted samples and the information provided by the applicant. There was no verification on the validity of such information.



SGS-CSTC (Shenzhen) Technical Services Co., Ltd.
Shenzhen Branch Testing Center Hardlines

Unless otherwise agreed in writing, this document is issued by the Company subject to its General Conditions of Service printed overleaf, available on request or accessible at <http://www.sgs.com/en/Terms-and-Conditions.aspx> and, for electronic format documents, subject to Terms and Conditions for Electronic Documents at <http://www.sgs.com/en/Terms-and-Conditions/Terms-e-Documents.aspx>. Attention is drawn to the limitation of liability, indemnification and jurisdiction issues defined therein. Any holder of this document is advised that information contained hereon reflects the Company's findings at the time of its intervention only and within the limits of Client's instructions, if any. The Company's sole responsibility is to its Client and this document does not exonerate parties to a transaction from exercising all their rights and obligations under the transaction documents. This document cannot be reproduced except in full, without prior written approval of the Company. Any unauthorized alteration, forgery or falsification of the content or appearance of this document is unlawful and offenders may be prosecuted to the fullest extent of the law. Unless otherwise stated the results shown in this test report refer only to the sample(s) tested and such sample(s) are retained for 30 days only.
Attention: To check the authenticity of testing / inspection report & certificate, please contact us at telephone:(86-755) 8307 1443, or email: CN.Doccheck@sgs.com
Room 101-801, Plant 4 & Room 101, Plant 2 & Room 101, Plant 3 & Room 301-501, Plant 3, Jianghao (Bantian) Industrial Plant Area, No.430, Jihua Road, Bantian Community, Bantian Street, Longgang District, Shenzhen, Guangdong, China 518129 www.sgs.com.cn
中国·广东·深圳市龙岗区坂田街道坂田社区吉华路430号江源(坂田)工业区厂房4号 101-901、2号101、3号101、3号301-501 邮编: 518129 t:(86-755) 25328888 sgs.china@sgs.com

ASTM F963-23 STANDARD CONSUMER SAFETY SPECIFICATION FOR TOY SAFETY

AS SPECIFIED IN ASTM F963-23 STANDARD CONSUMER SAFETY SPECIFICATION ON TOYS SAFETY

Clauses relevant to the item:

Clause	Description	Result
4	Safety Requirements	
4.1	Material Quality **	PASS
4.2	Flammability Test	PASS (See Result Page)
4.3	Toxicology	
4.3.2	Manufacturing and Packaging of Food	N/A
4.3.3	Indirect Food Additives	N/A
4.3.4	Cosmetics	N/A
4.3.5	Heavy Elements	
4.3.5.1	Heavy Elements in Paint/Similar Surface Coating Materials	PASS (See Result Page)
4.3.5.2	Heavy Metal in Substrate Materials	PASS (See Result Page)
4.3.6	Cosmetic, Liquids, Pastes, Putties, Gels, Powders and Item of Avian Feather Origin	N/A
4.3.7	Stuffing Materials	N/A
4.3.8	Phthalates	PASS (See Result Page)
4.4	Electrical/Thermal Energy	N/A
4.5	Sound-producing Toys	PASS
4.6.1	Small Objects	PASS
4.6.2	Mouth-actuated Toys	N/A
4.6.3	Labelling Requirements	N/A
4.7	Accessible Edges	PASS
4.8	Projections	PASS
4.9	Accessible Points	PASS
4.10	Wires or Rods	N/A
4.11	Nails and Fasteners	PASS
4.12	Plastic Film	PASS
4.13.1	Folding Mechanisms	N/A
4.13.2	Hinge-line Clearance	PASS
4.14	Cords, Straps and Elastic	N/A
4.15	Stability and Over-load Requirements	PASS
4.16	Confined Spaces	N/A



Unless otherwise agreed in writing, this document is issued by the Company subject to its General Conditions of Service printed overleaf, available on request or accessible at <http://www.sgs.com/en/Terms-and-Conditions.aspx> and, for electronic format documents, subject to Terms and Conditions for Electronic Documents at <http://www.sgs.com/en/Terms-and-Conditions/Terms-e-Document.aspx>. Attention is drawn to the limitation of liability, indemnification and jurisdiction issues defined therein. Any holder of this document is advised that information contained hereon reflects the Company's findings at the time of its intervention only and within the limits of Client's instructions, if any. The Company's sole responsibility is to its Client and this document does not exonerate parties to a transaction from exercising all their rights and obligations under the transaction documents. This document cannot be reproduced except in full, without prior written approval of the Company. Any unauthorized alteration, forgery or falsification of the content or appearance of this document is unlawful and offenders may be prosecuted to the fullest extent of the law. Unless otherwise stated the results shown in this test report refer only to the sample(s) tested and such sample(s) are retained for 30 days only.

Attention: To check the authenticity of testing / inspection report & certificate, please contact us at telephone:(86-755) 8307 1443, or email: CN.Doccheck@sgs.com

SGS-CSTC (Shenzhen) Technical Services Co., Ltd.
Shenzhen Branch Testing Center Hardlines

Room 101-501, Plant 4 & Room 101, Plant 2 & Room 101, Plant 3 & Room 301-501, Plant 3, Jilanghao (Banian) Industrial Plant Area, No.430, Jilua Road, Banian Community, Banian Street, Longgang District, Shenzhen, Guangdong, China 518129 www.sgs.com.cn
中国·广东·深圳市龙岗区坂田街道坂田社区吉华路 430 号江源 (坂田) 工业厂区厂房 4 号 101-901、2 号 101、3 号 301-501 邮编: 518129 t:(86-755) 25328888 sgs.china@sgs.com

Clause	Description	Result
4.17	Wheels, Tires, and Axles	PASS
4.18	Holes, Clearance & Accessibility of Mechanisms	PASS
4.19	Simulated Protective Devices	N/A
4.20	Pacifiers	N/A
4.21	Projectile Toys	N/A
4.22	Teethers and Teething Toys	N/A
4.23	Rattles	N/A
4.24	Squeeze Toys	N/A
4.25	Battery-Operated Toys (Non-rechargeable battery)	PASS
4.25.1	The unit shall contain the makings about battery polarity, battery size and voltage.	PASS
4.25.1.1	The unit shall bear the statement that the battery is not replaceable.	N/A
4.25.2	The maximum potential between two accessible electrical points shall not exceed 24V	PASS
4.25.3	Battery-operated toys shall be designed so that it is not possible to charge any non-rechargeable battery.	N/A
4.25.4	Battery accessibility before and after testing in accordance with 8.5-8.10 shall be determined in accordance with 4.25.4.1 or 4.25.4.2.	PASS
4.25.4.1	For toys intended for children less than 3 years old, no battery shall be accessible without requiring the use of a common household tool to access the battery(ies)	N/A
4.25.4.2	For all toys, batteries that fit completely within the small parts test cylinder shall not be accessible without requiring the use of a common household tool to access the battery(ies).	N/A
4.25.4.3	If a fastener is used to secure the battery compartment, it shall remain attached to the toy or battery compartment cover, before and after testing in accordance with 8.5-8.10.	PASS
4.25.4.4	If the appropriate tool is included with the toy, and instruction material conforming to 6.9 is included.	N/A
4.25.5	Batteries of different types/capacities shall not be mixed within any single electrical circuit.	PASS
4.25.6.1	The surface of the batteries shall not achieve temperature exceeding 71°C during normal use conditions.	PASS
4.25.6.2	The surface of the batteries shall not achieve temperature exceeding 71°C during stalled external moving parts of the toy.	N/A
4.25.7	No condition would cause the unit to fail the temperature requirements of 4.25.6 or present a combustion hazard as described in 4.25.	PASS
4.25.8	The unit contained all the instructions on safe battery usage.	PASS
4.25.9	Battery-Powered Ride-On Toys	N/A
4.25.10	Toy that contain secondary cells or secondary batteries	N/A
4.26	Toys Intended to be Attached to a Crib or Playpen	N/A



Unless otherwise agreed in writing, this document is issued by the Company subject to its General Conditions of Service printed overleaf, available on request or accessible at <http://www.sgs.com/en/Terms-and-Conditions.aspx> and, for electronic format documents, subject to Terms and Conditions for Electronic Documents at <http://www.sgs.com/en/Terms-and-Conditions/Terms-e-Document.aspx>. Attention is drawn to the limitation of liability, indemnification and jurisdiction issues defined therein. Any holder of this document is advised that information contained hereon reflects the Company's findings at the time of its intervention only and within the limits of Client's instructions, if any. The Company's sole responsibility is to its Client and this document does not exonerate parties to a transaction from exercising all their rights and obligations under the transaction documents. This document cannot be reproduced except in full, without prior written approval of the Company. Any unauthorized alteration, forgery or falsification of the content or appearance of this document is unlawful and offenders may be prosecuted to the fullest extent of the law. Unless otherwise stated the results shown in this test report refer only to the sample(s) tested and such sample(s) are retained for 30 days only.

Attention: To check the authenticity of testing / inspection report & certificate, please contact us at telephone:(86-755) 8307 1443, or email: CN.Doccheck@sgs.com

Clause	Description	Result
4.27	Stuffed and Beanbag-Type Toys	N/A
4.28	Stroller and Carriage Toys	N/A
4.29	Art Materials	N/A
4.30	Toy Gun Marking	N/A
4.31	Balloons	N/A
4.32	Certain Toys and Nearly Spherical Ends	N/A
4.33	Marbles	N/A
4.34	Balls	N/A
4.35	Pompoms	N/A
4.36	Hemispheric-shaped Objects	N/A
4.37	Yo Yo Elastic Tether Toys	N/A
4.38	Magnets	N/A
4.39	Jaw Entrapment in Handles and Steering Wheels	N/A
4.40	Expanding Materials	N/A
4.41	Toy Chest	N/A
5	Labeling Requirements	
5.1	Federal Government Requirements	
5.1.1	Specific Labeling Requirement	See Remark
	(Remark: All toys that fall within the definitions and requirements of the U.S. FHSA shall conform to the labeling requirement of that act. For specific requirements, reference 16 CFR 1500.3, 1500.14, 1500.19, 1500.82, 1500.83, 1500.86, 1500.121, 1500.122, 1500.123, 1500.125, 1500.126, 1500.127, 1500.128, 1500.130, 1505.3, and 1511.7. In addition, state labeling requirements may exist.)	
5.1.2	Tracking Label	PASS
5.2	Age Grading Labeling	PASS
5.3	Safety Labeling Requirements	PASS
5.4	Aquatic Toys	N/A
5.5	Crib & Playpen Toys	N/A
5.6	Mobile	N/A
5.7	Stroller and Carriage Toys	N/A
5.8	Toys Intended to be Assembled by an Adult	PASS
5.9	Simulated Protective Devices	N/A
5.10	Toys with Functional Sharp Edges and Sharp Points	N/A
5.11	Small Objects, Small Balls, Marbles, and Balloons	N/A
5.12	Art Materials	N/A
5.13	Electric Toys	N/A
5.14	Battery-operated Toys	N/A
5.15	Promotional Materials	PASS



Unless otherwise agreed in writing, this document is issued by the Company subject to its General Conditions of Service printed overleaf, available on request or accessible at <http://www.sgs.com/en/Terms-and-Conditions.aspx> and, for electronic format documents, subject to Terms and Conditions for Electronic Documents at <http://www.sgs.com/en/Terms-and-Conditions/Terms-e-Document.aspx>. Attention is drawn to the limitation of liability, indemnification and jurisdiction issues defined therein. Any holder of this document is advised that information contained hereon reflects the Company's findings at the time of its intervention only and within the limits of Client's instructions, if any. The Company's sole responsibility is to its Client and this document does not exonerate parties to a transaction from exercising all their rights and obligations under the transaction documents. This document cannot be reproduced except in full, without prior written approval of the Company. Any unauthorized alteration, forgery or falsification of the content or appearance of this document is unlawful and offenders may be prosecuted to the fullest extent of the law. Unless otherwise stated the results shown in this test report refer only to the sample(s) tested and such sample(s) are retained for 30 days only.

Attention: To check the authenticity of testing / inspection report & certificate, please contact us at telephone:(86-755) 8307 1443, or email: CN.Doccheck@sgs.com

Clause	Description	Result
5.16	Magnets	N/A
6	Instructional Literature	
6.2	Crib & Playpen Toys	N/A
6.3	Mobiles	N/A
6.4	Toys Intended to be Assembled by an Adult	N/A
6.5	Battery-Operated Toys	PASS
6.6	Battery-powered Ride-on Toys	N/A
6.7	Toys in Contact with Food	N/A
6.8	Toy Chests	N/A
6.9	The instructional material for toys which require a manufacturer-supplied specialty or custom tool to access the battery(ies)	N/A
7	Producer's Markings	
7.1	Producer's Markings	PASS
7.2	Battery-powered Ride-on Toys	N/A
7.3	Toy Chests	N/A
8.5	Normal Use Testing	PASS
8.7	Impact Test	PASS
8.8	Torque Test	PASS
8.9	Tension Test	PASS
8.10	Compression Test	PASS
8.12	Flexure Test	N/A
8.16	Tension Test for Pompoms	N/A

Result Page:

Flammability Test (Clause 4.2)

Flammability Test on Solid

Sample	Burning Rate (inch/sec)
See sample description	DNI

Requirement:

A toy / component is considered a "flammable solid" if it ignites and burns with a self-sustaining flame at a rate greater than 0.10 in/sec along its major axis.



SGS-CSTC (China) Technical Services Co., Ltd.
Shenzhen Branch Testing Center Hardlines

Unless otherwise agreed in writing, this document is issued by the Company subject to its General Conditions of Service printed overleaf, available on request or accessible at <http://www.sgs.com/en/Terms-and-Conditions.aspx> and, for electronic format documents, subject to Terms and Conditions for Electronic Documents at <http://www.sgs.com/en/Terms-and-Conditions/Terms-e-Documents.aspx>. Attention is drawn to the limitation of liability, indemnification and jurisdiction issues defined therein. Any holder of this document is advised that information contained hereon reflects the Company's findings at the time of its intervention only and within the limits of Client's instructions, if any. The Company's sole responsibility is to its Client and this document does not exonerate parties to a transaction from exercising all their rights and obligations under the transaction documents. This document cannot be reproduced except in full, without prior written approval of the Company. Any unauthorized alteration, forgery or falsification of the content or appearance of this document is unlawful and offenders may be prosecuted to the fullest extent of the law. Unless otherwise stated the results shown in this test report refer only to the sample(s) tested and such sample(s) are retained for 30 days only.

Attention: To check the authenticity of testing / inspection report & certificate, please contact us at telephone:(86-755) 8307 1443, or email: CN.Doccheck@sgs.com

Room 101-501, Plant 4 & Room 101, Plant 2 & Room 101, Plant 3 & Room 301-501, Plant 3, Jilanghao (Banlian) Industrial Plant Area, No.430, Jilang Road, Banlian Community, Banlian Street, Longgang District, Shenzhen, Guangdong, China 518129 www.sgs.com.cn
中国·广东·深圳市龙岗区坂田街道坂田社区吉华路430号江源(坂田)工业厂区厂房4号 101-901、2号101、3号101、3号301-501 邮编: 518129 t:(86-755) 25328888 sgs.china@sgs.com

ASTM F963-23, Clause 4.3.5.1 – Heavy Elements in Paint/Similar Surface Coating Materials

Method: With reference to CPSC-CH-E1003-09.1 / ASTM F963-23 Clause 8.3

Analysis was performed by Inductively Coupled Plasma Optical Emission Spectrometer (ICP-OES)

Total Lead Content

Test Item(s)	Lead (Pb)		
MDL (ppm)	20		
Total Limit (ppm)	90		
Specimen Description	Alias No.	Tracing No.	Result(s) (ppm)
1. Shiny silvery coating (Bodywork, light, steering wheel) + Multi-color coating on paper label (Sticker)	11	1	32
2. Silvery-grey coating on metal (Push handle) + Dull silvery-grey coating on metal (Push handle)	11	2	ND

Soluble Heavy Metal Content

Test Item(s)	Pb	Sb	As	Ba	Cd	Cr	Hg	Se				
MDL (ppm)	5	5	2.5	10	5	5	5	10				
Migration Limit (ppm)	90	60	25	1000	75	60	60	500				
Specimen No.	Alias No.	Tracing No.	Mass of trace amount (mg)	Adjusted Migration Result(s) (ppm)								
1	22	24	/	ND	ND	ND	ND	ND	ND	ND	ND	ND
2	22	25	/	ND	ND	ND	ND	ND	ND	ND	ND	ND
3	22	26	/	ND	ND	ND	ND	ND	ND	ND	ND	ND
4	22	27	/	ND	ND	ND	ND	ND	ND	ND	ND	ND

Specimen Description:

1. Shiny silvery coating (Bodywork, light, steering wheel)
2. Multi-color coating on paper label (Sticker)
3. Silvery-grey coating on metal (Push handle)
4. Dull silvery-grey coating on metal (Push handle)



Test Report

No.: T52510340678TY-01

Date: OCT 24, 2025

Page 11 of 35

- Note:
- ppm = parts per million
 - 1% = 10000 mg/kg = 10000 ppm = 10000 µg/g
 - MDL = Method Detection Limit
 - ND = Not Detected (lower than MDL)

The below note(s) is(are) applicable in case the relevant superscript(s) and symbol(s) was(were) shown in the result table:

- + Composite test has been performed as per client's request and the results are calculated using the minimum specimen weight
- Δ Test result is over the action limit as suggested by CPSC-CH-E1003-09.1. As the result is based on composite test and falls into an uncertain range, where "Pass" or "Fail" cannot be truly defined, "Interim-Fail" is given since the specimen may possibly fail according to the regulatory limit. Individual test is highly recommended to determine the exact Lead content in each component. The decision rule has prescribed in the regulation or standard, conformity reporting will base on the standard.
- * Exceeds Permissible Limit

ASTM F963-23, Clause 4.3.5.2 – Heavy Elements in Substrate Materials

Method: With reference to CPSC-CH-E1002-08.3 / CPSC-CH-E1001-08.3 / ASTM F963-23 Clause 8.3 / CPSC-CH-E1004-11

Analysis was performed by Inductively Coupled Plasma Optical Emission Spectrometer (ICP-OES)/ Inductively Coupled Plasma Mass Spectrometer (ICP-MS)

Total Lead Content

Test Item(s)	Lead (Pb)		
MDL (ppm)	20		
Total Limit (ppm)	100		
Specimen Description	Alias No.	Tracing No.	Result(s) (ppm)
1. Silvery solder point	3	1	ND
2. Silvery metal screw (Windshield)	6	1	ND
3. Silvery-blue metal axle	6	2	ND
4. Silvery metal thick tube (Push handle)	6	3	ND
5. Silvery metal thin tube (Push handle)	6	4	ND
6. Silvery metal snap (Push handle)	6	5	ND
7. Black metal big screw (Push handle)	6	6	ND
8. Black metal small screw (Push handle, seat backrest)	6	7	ND
9. Silvery metal screw (Wheel)	6	8	ND
10. Silvery metal screw (Steering wheel)	6	9	ND
11. Black metal screw (Steering wheel)	6	10	ND
12. Black metal screw (Accessory)	6	11	ND



Unless otherwise agreed in writing, this document is issued by the Company subject to its General Conditions of Service printed overleaf, available on request or accessible at <http://www.sgs.com/en/Terms-and-Conditions.aspx> and, for electronic format documents, subject to Terms and Conditions for Electronic Documents at <http://www.sgs.com/en/Terms-and-Conditions/Terms-e-Documents.aspx>. Attention is drawn to the limitation of liability, indemnification and jurisdiction issues defined therein. Any holder of this document is advised that information contained hereon reflects the Company's findings at the time of its intervention only and within the limits of Client's instructions, if any. The Company's sole responsibility is to its Client and this document does not exonerate parties to a transaction from exercising all their rights and obligations under the transaction documents. This document cannot be reproduced except in full, without prior written approval of the Company. Any unauthorized alteration, forgery or falsification of the content or appearance of this document is unlawful and offenders may be prosecuted to the fullest extent of the law. Unless otherwise stated the results shown in this test report refer only to the sample(s) tested and such sample(s) are retained for 30 days only.

Attention: To check the authenticity of testing / inspection report & certificate, please contact us at telephone:(86-755) 8307 1443, or email: CN.Doccheck@sgs.com

SGS-CSTC Technical Services Co., Ltd.
Shenzhen Branch Testing Center Hardlines

Room 101-501, Plant 4 & Room 101, Plant 2 & Room 101, Plant 3 & Room 301-501, Plant 3, Jianghao (Banian) Industrial Plant Area, No.430, Jihua Road, Banian Community, Banian Street, Longgang District, Shenzhen, Guangdong, China 518129 www.sgs.com.cn
中国·广东·深圳市龙岗区坂田街道坂田社区吉华路430号江灏(坂田)工业厂区厂房4号 101-901、2号101、3号301-501 邮编: 518129 t:(86-755) 25328888 sgs.china@sgs.com

Test Item(s)	Lead (Pb)		
MDL (ppm)	20		
Total Limit (ppm)	100		
Specimen Description	Alias No.	Tracing No.	Result(s) (ppm)
13. Black metal bolt (Accessory)	6	12	ND
14. Black metal nut (Accessory)	6	13	ND
15. Silvery-blue metal washer	6	14	ND
16. Silvery-blue metal thick piece	6	15	ND
17. Black metal screw (Chassis)	6	16	ND
18. Silvery-blue metal thin piece	6	17	ND
19. Silvery metal big nut	6	18	ND
20. Silvery metal small nut	6	19	ND
21. Silvery metal big cap screw	6	20	ND
22. Silvery metal small cap screw	6	21	ND
23. Silvery metal big screw (Chassis)	6	22	ND
24. Silvery metal medium screw (Chassis)	6	23	ND
25. Silvery metal small screw (Chassis)	6	24	ND
26. Laminated white paper label w/ multi-color printing (Sticker) + Laminated off-white paper label w/ yellow, black printing (Sticker)	15	1	ND
27. White paper label (Sticker) + Transparent plastic label w/ white, red printing (Sticker)	15	2	ND
28. Transparent plastic sheet (Mirror) + Black plastic (Bodywork, steering wheel, mirror, chassis, accessory) + Pearl silvery-grey plastic (Wheel cover)	15	3	ND
29. Matt-black plastic (Seat, seat backrest) + Black plastic (Buckle) + Transparent plastic (Windshield, light cover)	15	4	ND
30. Pink plastic (Bodywork) + Grey plastic (Push handle) + Bright black plastic (Chassis, push handle)	15	5	ND
31. Off-white plastic (Washer) + Matt-black plastic (Bodywork, light, steering wheel) + Black plastic sheet (Holder)	15	6	ND
32. Off-white plastic (Push handle) + Dark pink plastic (Holder) + White plastic (Holder)	15	7	ND
33. Snow-white plastic (Bodywork) + Translucent cream hot melt glue (Light) + Black plastic (Cable jacket)	15	8	ND



Unless otherwise agreed in writing, this document is issued by the Company subject to its General Conditions of Service printed overleaf, available on request or accessible at <http://www.sgs.com/en/Terms-and-Conditions.aspx> and, for electronic format documents, subject to Terms and Conditions for Electronic Documents at <http://www.sgs.com/en/Terms-and-Conditions/Terms-e-Documents.aspx>. Attention is drawn to the limitation of liability, indemnification and jurisdiction issues defined therein. Any holder of this document is advised that information contained hereon reflects the Company's findings at the time of its intervention only and within the limits of Client's instructions, if any. The Company's sole responsibility is to its Client and this document does not exonerate parties to a transaction from exercising all their rights and obligations under the transaction documents. This document cannot be reproduced except in full, without prior written approval of the Company. Any unauthorized alteration, forgery or falsification of the content or appearance of this document is unlawful and offenders may be prosecuted to the fullest extent of the law. Unless otherwise stated the results shown in this test report refer only to the sample(s) tested and such sample(s) are retained for 30 days only.

Attention: To check the authenticity of testing / inspection report & certificate, please contact us at telephone:(86-755) 8307 1443, or email: CN.Doccheck@sgs.com

Soluble Heavy Metal Content

Test Item(s)				Pb	Sb	As	Ba	Cd	Cr	Hg	Se
MDL (ppm)				5	5	2.5	10	5	5	5	10
Migration Limit (ppm) -- Other Than Modeling Clays				90	60	25	1000	75	60	60	500
Migration Limit (ppm) -- Modeling Clays				90	60	25	250	50	25	25	500
Specimen No.	Alias No.	Tracing No.	Mass of trace amount (mg)	Adjusted Migration Result(s) (ppm)							
1	22	1	/	ND	ND	ND	ND	ND	ND	ND	ND
2	22	2	/	ND	ND	ND	ND	ND	ND	ND	ND
3	22	3	/	ND	ND	ND	ND	ND	ND	ND	ND
4	22	4	/	ND	ND	ND	ND	ND	ND	ND	ND
5	22	5	/	ND	ND	ND	ND	ND	ND	ND	ND
6	22	6	/	ND	ND	ND	ND	ND	ND	ND	ND
7	22	7	/	ND	ND	ND	ND	ND	ND	ND	ND
8	22	8	/	ND	ND	ND	ND	ND	ND	ND	ND
9	22	9	/	ND	ND	ND	ND	ND	ND	ND	ND
10	22	10	/	ND	ND	ND	ND	ND	ND	ND	ND
11	22	11	/	ND	ND	ND	ND	ND	ND	ND	ND
12	22	12	/	ND	ND	ND	ND	ND	ND	ND	ND
13	22	13	/	ND	ND	ND	ND	ND	ND	ND	ND
14	22	14	/	ND	ND	ND	ND	ND	ND	ND	ND
15	22	15	/	ND	ND	ND	ND	ND	ND	ND	ND
16	22	16	/	ND	ND	ND	ND	ND	ND	ND	ND
17	22	17	/	ND	ND	ND	ND	ND	ND	ND	ND
18	22	18	/	ND	ND	ND	ND	ND	ND	ND	ND
19	22	19	/	ND	ND	ND	ND	ND	ND	ND	ND
20	22	20	/	ND	ND	ND	ND	ND	ND	ND	ND
21	22	21	/	ND	ND	ND	ND	ND	ND	ND	ND
22	22	22	/	ND	ND	ND	ND	ND	ND	ND	ND
23	22	23	/	ND	ND	ND	ND	ND	ND	ND	ND

Specimen Description:

1. Black woven band w/ black fabric thread (Seat belt)
2. Laminated white paper label w/ multi-color printing (Sticker)
3. Laminated off-white paper label w/ yellow, black printing (Sticker)
4. White paper label (Sticker)
5. Transparent plastic label w/ white, red printing (Sticker)
6. Transparent plastic sheet (Mirror)
7. Black plastic (Bodywork, steering wheel, mirror, chassis, accessory)
8. Pearl silvery-grey plastic (Wheel cover)



Unless otherwise agreed in writing, this document is issued by the Company subject to its General Conditions of Service printed overleaf, available on request or accessible at <http://www.sgs.com/en/Terms-and-Conditions.aspx> and, for electronic format documents, subject to Terms and Conditions for Electronic Documents at <http://www.sgs.com/en/Terms-and-Conditions/Terms-e-Documents.aspx>. Attention is drawn to the limitation of liability, indemnification and jurisdiction issues defined therein. Any holder of this document is advised that information contained hereon reflects the Company's findings at the time of its intervention only and within the limits of Client's instructions, if any. The Company's sole responsibility is to its Client and this document does not exonerate parties to a transaction from exercising all their rights and obligations under the transaction documents. This document cannot be reproduced except in full, without prior written approval of the Company. Any unauthorized alteration, forgery or falsification of the content or appearance of this document is unlawful and offenders may be prosecuted to the fullest extent of the law. Unless otherwise stated the results shown in this test report refer only to the sample(s) tested and such sample(s) are retained for 30 days only.

Attention: To check the authenticity of testing / inspection report & certificate, please contact us at telephone:(86-755) 8307 1443, or email: CN.Doccheck@sgs.com

Specimen Description:

9. Matt-black plastic (Seat, seat backrest)
10. Black plastic (Buckle)
11. Transparent plastic (Windshield, light cover)
12. Pink plastic (Bodywork)
13. Grey plastic (Push handle)
14. Bright black plastic (Chassis, push handle)
15. Off-white plastic (Washer)
16. Matt-black plastic (Bodywork, light, steering wheel)
17. Black plastic sheet (Holder)
18. Off-white plastic (Push handle)
19. Dark pink plastic (Holder)
20. White plastic (Holder)
21. Snow-white plastic (Bodywork)
22. Translucent cream hot melt glue (Light)
23. Black plastic (Cable jacket)

- Note:
- ppm = parts per million
 - µg/component = microgramme per component
 - ND = Not Detected (lower than MDL)
 - MDL = Method Detection Limit
 - 1% = 10000 mg/kg = 10000 ppm

The below note(s) is(are) applicable in case the relevant superscript(s) and symbol(s) was(were) shown in the result table:

- ^Δ Test result is over recommended action limit (80% of the regulatory limit). As the result is based on composite test and falls into an uncertain range, where "Pass" or "Fail" cannot be truly defined, "Interim-Fail" is given since the specimen may possibility fail according to the regulatory limit. Individual test is highly recommended to determine the exact Lead content in each component. The decision rule has prescribed in the regulation or standard, conformity reporting will base on the standard.
- + Composite test has been performed as per client's request and the results are calculated using the minimum specimen weight
- * Exceeds Permissible Limit



Standard Consumer Safety Specification on Toy Safety, ASTM F963-23, Clause 4.3.8 – Phthalate Content

Method: With reference to CPSC-CH-C1001-09.4

Analysis was performed by Gas Chromatography Mass Spectrometer (GC-MS) / High Performance Liquid Chromatography with Mass Spectrometer (HPLC-MS)

Test Item(s)	CAS No.	Result (s) (%)			MDL (%)	Permissible Limit (%)
		1	2	3		
Specimen No.	--	1	2	3	0.005	0.1
Alias No.	--	20	20	20		
Tracing No.	--	1	2	3		
Dibutyl Phthalate (DBP)	84-74-2	ND	ND	ND	0.005	0.1
Benzylbutyl Phthalate (BBP)	85-68-7	ND	ND	ND	0.005	0.1
Di-(2-ethyl hexyl) phthalate (DEHP) / Dioctyl Phthalate (DOP)	117-81-7	ND	ND	ND	0.005	0.1
Diisononyl Phthalate (DINP)	28553-12-0 68515-48-0	ND	0.015	ND	0.005	0.1
Di-n-Hexyl phthalate (DHP/DnHP/DHEXP)	84-75-3	ND	ND	ND	0.005	0.1
Diisobutyl phthalate (DIBP)	84-69-5	ND	ND	ND	0.005	0.1
Di-n-pentyl phthalate (DPP/DPEP/DPENP)	131-18-0	ND	ND	ND	0.005	0.1
Dicyclohexyl phthalate (DCHP)	84-61-7	ND	ND	ND	0.005	0.1

Test Item(s)	CAS No.	Result (s) (%)			MDL (%)	Permissible Limit (%)
		4	5	6		
Specimen No.	--	4	5	6	0.005	0.1
Alias No.	--	20	20	20		
Tracing No.	--	4	5	6		
Dibutyl Phthalate (DBP)	84-74-2	ND	ND	ND	0.005	0.1
Benzylbutyl Phthalate (BBP)	85-68-7	ND	ND	ND	0.005	0.1
Di-(2-ethyl hexyl) phthalate (DEHP) / Dioctyl Phthalate (DOP)	117-81-7	ND	ND	ND	0.005	0.1
Diisononyl Phthalate (DINP)	28553-12-0 68515-48-0	ND	ND	ND	0.005	0.1
Di-n-Hexyl phthalate (DHP/DnHP/DHEXP)	84-75-3	ND	ND	ND	0.005	0.1
Diisobutyl phthalate (DIBP)	84-69-5	ND	ND	ND	0.005	0.1
Di-n-pentyl phthalate (DPP/DPEP/DPENP)	131-18-0	ND	ND	ND	0.005	0.1
Dicyclohexyl phthalate (DCHP)	84-61-7	ND	ND	ND	0.005	0.1



Unless otherwise agreed in writing, this document is issued by the Company subject to its General Conditions of Service printed overleaf, available on request or accessible at <http://www.sgs.com/en/Terms-and-Conditions.aspx> and, for electronic format documents, subject to Terms and Conditions for Electronic Documents at <http://www.sgs.com/en/Terms-and-Conditions/Terms-e-Documents.aspx>. Attention is drawn to the limitation of liability, indemnification and jurisdiction issues defined therein. Any holder of this document is advised that information contained hereon reflects the Company's findings at the time of its intervention only and within the limits of Client's instructions, if any. The Company's sole responsibility is to its Client and this document does not exonerate parties to a transaction from exercising all their rights and obligations under the transaction documents. This document cannot be reproduced except in full, without prior written approval of the Company. Any unauthorized alteration, forgery or falsification of the content or appearance of this document is unlawful and offenders may be prosecuted to the fullest extent of the law. Unless otherwise stated the results shown in this test report refer only to the sample(s) tested and such sample(s) are retained for 30 days only.

Attention: To check the authenticity of testing / inspection report & certificate, please contact us at telephone:(86-755) 8307 1443, or email: CN.Doccheck@sgs.com
 Room 101-501, Plant 4 & Room 101, Plant 2 & Room 101, Plant 3 & Room 301-501, Plant 3, Jianghao (Bantian) Industrial Plant Area, No.430, Jihua Road, Bantian Community, Bantian Street, Longgang District, Shenzhen, Guangdong, China 518129 www.sgs.com.cn
 中国·广东·深圳市龙岗区坂田街道坂田社区吉华路430号江灏(坂田)工业区厂房4号 101-901、2号101、3号301-501 邮编: 518129 t:(86-755) 25328888 sgs.china@sgs.com

Test Item(s)	CAS No.	Result (s) (%)		MDL (%)	Permissible Limit (%)
Specimen No.	--	7	8		
Alias No.	--	20	20		
Tracing No.	--	7	8		
Dibutyl Phthalate (DBP)	84-74-2	ND	ND	0.005	0.1
Benzylbutyl Phthalate (BBP)	85-68-7	ND	ND	0.005	0.1
Di-(2-ethyl hexyl) phthalate (DEHP) / Dioctyl Phthalate (DOP)	117-81-7	ND	ND	0.005	0.1
Diisononyl Phthalate (DINP)	28553-12-0 68515-48-0	ND	ND	0.005	0.1
Di-n-Hexyl phthalate (DHP/DnHP/DHEXP)	84-75-3	ND	ND	0.005	0.1
Diisobutyl phthalate (DIBP)	84-69-5	ND	ND	0.005	0.1
Di-n-pentyl phthalate (DPP/DPEP/DPENP)	131-18-0	ND	ND	0.005	0.1
Dicyclohexyl phthalate (DCHP)	84-61-7	ND	ND	0.005	0.1

Test Item(s)	CAS No.	Result (s) (%)		MDL (%)	Permissible Limit (%)
Specimen No.	--	9	10		
Alias No.	--	20	20		
Tracing No.	--	9	10		
Dibutyl Phthalate (DBP)	84-74-2	ND	ND	0.005	0.1
Benzylbutyl Phthalate (BBP)	85-68-7	ND	ND	0.005	0.1
Di-(2-ethyl hexyl) phthalate (DEHP) / Dioctyl Phthalate (DOP)	117-81-7	ND	ND	0.005	0.1
Diisononyl Phthalate (DINP)	28553-12-0 68515-48-0	ND	ND	0.005	0.1
Di-n-Hexyl phthalate (DHP/DnHP/DHEXP)	84-75-3	ND	ND	0.005	0.1
Diisobutyl phthalate (DIBP)	84-69-5	ND	ND	0.005	0.1
Di-n-pentyl phthalate (DPP/DPEP/DPENP)	131-18-0	ND	ND	0.005	0.1
Dicyclohexyl phthalate (DCHP)	84-61-7	ND	ND	0.005	0.1

Specimen Description:

1. Shiny silvery coating (Bodywork, light, steering wheel) + Multi-color coating on paper label (Sticker)
2. Silvery-grey coating on metal (Push handle) + Dull silvery-grey coating on metal (Push handle)
3. Laminated white paper label w/ multi-color printing (Sticker) + Laminated off-white paper label w/ yellow, black printing (Sticker) + Translucent cream hot melt glue (Light)



Unless otherwise agreed in writing, this document is issued by the Company subject to its General Conditions of Service printed overleaf, available on request or accessible at <http://www.sgs.com/en/Terms-and-Conditions.aspx> and, for electronic format documents, subject to Terms and Conditions for Electronic Documents at <http://www.sgs.com/en/Terms-and-Conditions/Terms-e-Documents.aspx>. Attention is drawn to the limitation of liability, indemnification and jurisdiction issues defined therein. Any holder of this document is advised that information contained hereon reflects the Company's findings at the time of its intervention only and within the limits of Client's instructions, if any. The Company's sole responsibility is to its Client and this document does not exonerate parties to a transaction from exercising all their rights and obligations under the transaction documents. This document cannot be reproduced except in full, without prior written approval of the Company. Any unauthorized alteration, forgery or falsification of the content or appearance of this document is unlawful and offenders may be prosecuted to the fullest extent of the law. Unless otherwise stated the results shown in this test report refer only to the sample(s) tested and such sample(s) are retained for 30 days only.

Attention: To check the authenticity of testing / inspection report & certificate, please contact us at telephone:(86-755) 8307 1443, or email: CN.Doccheck@sgs.com

Specimen Description:

4. Black plastic (Cable jacket) + White paper label (Sticker) + Transparent plastic label w/ white, red printing (Sticker)
5. Transparent plastic sheet (Mirror) + Black plastic (Bodywork, steering wheel, mirror, chassis, accessory) + Pearl silvery-grey plastic (Wheel cover)
6. Matt-black plastic (Seat, seat backrest) + Black plastic (Buckle) + Transparent plastic (Windshield, light cover)
7. Pink plastic (Bodywork) + Grey plastic (Push handle) + Bright black plastic (Chassis, push handle)
8. Off-white plastic (Washer) + Matt-black plastic (Bodywork, light, steering wheel) + Black plastic sheet (Holder)
9. Off-white plastic (Push handle) + Dark pink plastic (Holder)
10. White plastic (Holder) + Snow-white plastic (Bodywork)

- Note:
- % = percentage by weight
 - MDL = Method Detection Limit
 - ND = Not Detected (lower than MDL)
 - 1% = 10000 mg/kg = 10000 ppm

The below note(s) is(are) applicable in case the relevant superscript(s) and symbol(s) was(were) shown in the result table:

- + Composite test has been performed as per client's request and the results are calculated using the total specimen weight
- Δ Result is made based on the composite test which may have the probability of one or more components that can lead to a failure conclusion. Individual test is highly recommended for each component
- * Exceeds Permissible Limit

15 U.S.C. § 1278a and CPSIA section 101(f) (1) - Lead in Paint/Similar Surface Coating Materials

Method: With reference to CPSC-CH-E1003-09.1 - Standard Operating Procedure for Determining Lead (Pb) in Paint and Other Similar Surface Coatings

Test Item(s)			Lead (Pb)
Permissible Limit (ppm)			90
Specimen Description	Alias No.	Tracing No.	Result(s) (ppm)
1. Shiny silvery coating (Bodywork, light, steering wheel) + Multi-color coating on paper label (Sticker)	7	1	32
2. Silvery-grey coating on metal (Push handle) + Dull silvery-grey coating on metal (Push handle)	7	2	ND



Unless otherwise agreed in writing, this document is issued by the Company subject to its General Conditions of Service printed overleaf, available on request or accessible at <http://www.sgs.com/en/Terms-and-Conditions.aspx> and, for electronic format documents, subject to Terms and Conditions for Electronic Documents at <http://www.sgs.com/en/Terms-and-Conditions/Terms-e-Documents.aspx>. Attention is drawn to the limitation of liability, indemnification and jurisdiction issues defined therein. Any holder of this document is advised that information contained hereon reflects the Company's findings at the time of its intervention only and within the limits of Client's instructions, if any. The Company's sole responsibility is to its Client and this document does not exonerate parties to a transaction from exercising all their rights and obligations under the transaction documents. This document cannot be reproduced except in full, without prior written approval of the Company. Any unauthorized alteration, forgery or falsification of the content or appearance of this document is unlawful and offenders may be prosecuted to the fullest extent of the law. Unless otherwise stated the results shown in this test report refer only to the sample(s) tested and such sample(s) are retained for 30 days only.

Attention: To check the authenticity of testing / inspection report & certificate, please contact us at telephone:(86-755) 8307 1443, or email: CN.Doccheck@sgs.com

Room 101-801, Plant 4 & Room 101, Plant 2 & Room 101, Plant 3 & Room 301-501, Plant 3, Jianghao (Bantian) Industrial Plant Area, No.430, Jihua Road, Bantian Community, Banian Street, Longgang District, Shenzhen, Guangdong, China 518129 www.sgs.com.cn
 中国·广东·深圳市龙岗区坂田街道坂田社区吉华路430号江源(坂田)工业厂区厂房4号 101-901、2号101、3号101、3号301-501 邮编: 518129 t:(86-755) 25328888 sgs.china@sgs.com

- Note:
- ppm = parts per million
 - ND = Not Detected (lower than MDL)
 - MDL = Method Detection Limit = 20 ppm
 - 1% = 10000 mg/kg = 10000 ppm

The below note(s) is(are) applicable in case the relevant superscript(s) and symbol(s) was(were) shown in the result table:

- + Composite test has been performed as per client's request and the results are calculated using the minimum specimen weight
- ^Δ Test result is over the action limit as suggested by CPSC-CH-E1003-09.1. As the result is based on composite test and falls into an uncertain range, where "Pass" or "Fail" cannot be truly defined, "Interim-Fail" is given since the specimen may possibility fail according to the regulatory limit. Individual test is highly recommended to determine the exact Lead content in each component. The decision rule has prescribed in the regulation or standard, conformity reporting will base on the standard.
- * Exceeds Permissible Limit

15 U.S.C. § 1278a and CPSIA section 101(a) (2) - Lead in Accessible Substrate Materials

Method (non-metallic materials): With reference to CPSC-CH-E1002-08.3 - Standard Operation Procedure for Determining Total Lead (Pb) in Non-Metal Children Product

Method (metal materials): With reference to CPSC-CH-E1001-08.3 - Standard Operating Procedure for Determining Total Lead (Pb) in Children's Metal Products (Including Children's Metal Jewelry)

Test Item(s)			Lead (Pb)
Permissible Limit (ppm)			100
Specimen Description	Alias No.	Tracing No.	Result(s) (ppm)
1. Silvery solder point	1	1	ND
2. Silvery metal screw (Windshield)	4	1	ND
3. Silvery-blue metal axle	4	2	ND
4. Silvery metal thick tube (Push handle)	4	3	ND
5. Silvery metal thin tube (Push handle)	4	4	ND
6. Silvery metal snap (Push handle)	4	5	ND
7. Black metal big screw (Push handle)	4	6	ND
8. Black metal small screw (Push handle, seat backrest)	4	7	ND
9. Silvery metal screw (Wheel)	4	8	ND
10. Silvery metal screw (Steering wheel)	4	9	ND
11. Black metal screw (Steering wheel)	4	10	ND
12. Black metal screw (Accessory)	4	11	ND
13. Black metal bolt (Accessory)	4	12	ND
14. Black metal nut (Accessory)	4	13	ND



Unless otherwise agreed in writing, this document is issued by the Company subject to its General Conditions of Service printed overleaf, available on request or accessible at <http://www.sgs.com/en/Terms-and-Conditions.aspx> and, for electronic format documents, subject to Terms and Conditions for Electronic Documents at <http://www.sgs.com/en/Terms-and-Conditions/Terms-e-Documents.aspx>. Attention is drawn to the limitation of liability, indemnification and jurisdiction issues defined therein. Any holder of this document is advised that information contained hereon reflects the Company's findings at the time of its intervention only and within the limits of Client's instructions, if any. The Company's sole responsibility is to its Client and this document does not exonerate parties to a transaction from exercising all their rights and obligations under the transaction documents. This document cannot be reproduced except in full, without prior written approval of the Company. Any unauthorized alteration, forgery or falsification of the content or appearance of this document is unlawful and offenders may be prosecuted to the fullest extent of the law. Unless otherwise stated the results shown in this test report refer only to the sample(s) tested and such sample(s) are retained for 30 days only.

Attention: To check the authenticity of testing / inspection report & certificate, please contact us at telephone:(86-755) 8307 1443, or email: CN.Doccheck@sgs.com

Test Item(s)			Lead (Pb)
Permissible Limit (ppm)			100
Specimen Description	Alias No.	Tracing No.	Result(s) (ppm)
15. Silvery-blue metal washer	4	14	ND
16. Silvery-blue metal thick piece	4	15	ND
17. Black metal screw (Chassis)	4	16	ND
18. Silvery-blue metal thin piece	4	17	ND
19. Silvery metal big nut	4	18	ND
20. Silvery metal small nut	4	19	ND
21. Silvery metal big cap screw	4	20	ND
22. Silvery metal small cap screw	4	21	ND
23. Silvery metal big screw (Chassis)	4	22	ND
24. Silvery metal medium screw (Chassis)	4	23	ND
25. Silvery metal small screw (Chassis)	4	24	ND
26. Laminated white paper label w/ multi-color printing (Sticker) + Laminated off-white paper label w/ yellow, black printing (Sticker)	13	1	ND
27. White paper label (Sticker) + Transparent plastic label w/ white, red printing (Sticker)	13	2	ND
28. Transparent plastic sheet (Mirror) + Black plastic (Bodywork, steering wheel, mirror, chassis, accessory) + Pearl silvery-grey plastic (Wheel cover)	13	3	ND
29. Matt-black plastic (Seat, seat backrest) + Black plastic (Buckle) + Transparent plastic (Windshield, light cover)	13	4	ND
30. Pink plastic (Bodywork) + Grey plastic (Push handle) + Bright black plastic (Chassis, push handle)	13	5	ND
31. Off-white plastic (Washer) + Matt-black plastic (Bodywork, light, steering wheel) + Black plastic sheet (Holder)	13	6	ND
32. Off-white plastic (Push handle) + Dark pink plastic (Holder) + White plastic (Holder)	13	7	ND
33. Snow-white plastic (Bodywork) + Translucent cream hot melt glue (Light) + Black plastic (Cable jacket)	13	8	ND



Unless otherwise agreed in writing, this document is issued by the Company subject to its General Conditions of Service printed overleaf, available on request or accessible at <http://www.sgs.com/en/Terms-and-Conditions.aspx> and, for electronic format documents, subject to Terms and Conditions for Electronic Documents at <http://www.sgs.com/en/Terms-and-Conditions/Terms-e-Document.aspx>. Attention is drawn to the limitation of liability, indemnification and jurisdiction issues defined therein. Any holder of this document is advised that information contained hereon reflects the Company's findings at the time of its intervention only and within the limits of Client's instructions, if any. The Company's sole responsibility is to its Client and this document does not exonerate parties to a transaction from exercising all their rights and obligations under the transaction documents. This document cannot be reproduced except in full, without prior written approval of the Company. Any unauthorized alteration, forgery or falsification of the content or appearance of this document is unlawful and offenders may be prosecuted to the fullest extent of the law. Unless otherwise stated the results shown in this test report refer only to the sample(s) tested and such sample(s) are retained for 30 days only.

Attention: To check the authenticity of testing / inspection report & certificate, please contact us at telephone:(86-755) 8307 1443, or email: CN.Doccheck@sgs.com

- Note:
- ppm = parts per million
 - ND = Not Detected (lower than MDL)
 - MDL = Method Detection Limit = 20 ppm
 - 1% = 10000 mg/kg = 10000 ppm

The below note(s) is(are) applicable in case the relevant superscript(s) and symbol(s) was(were) shown in the result table:

- ^Δ Test result is over recommended action limit (80% of the regulatory limit). As the result is based on composite test and falls into an uncertain range, where “Pass” or “Fail” cannot be truly defined, “Interim-Fail” is given since the specimen may possibility fail according to the regulatory limit. Individual test is highly recommended to determine the exact Lead content in each component. The decision rule has prescribed in the regulation or standard, conformity reporting will base on the standard.
- + Composite test has been performed as per client’s request and the results are calculated using the minimum specimen weight
- * Exceeds Permissible Limit

US 16 CFR Part 1307 – Phthalates Content

Method: With reference to CPSC-CH-C1001-09.4

Analysis was performed by Gas Chromatography Mass Spectrometer (GC-MS) / High Performance Liquid Chromatography with Mass Spectrometer (HPLC-MS)

Test Item(s)	CAS No.	Result (s) (%)			MDL (%)	Permissible Limit (%)
Alias No.	--	19	19	19		
Tracing No.	--	1	2	3		
Specimen No.	--	1	2	3		
Dibutyl Phthalate (DBP)	84-74-2	ND	ND	ND	0.005	0.1
Benzylbutyl Phthalate (BBP)	85-68-7	ND	ND	ND	0.005	0.1
Di-(2-ethyl hexyl) phthalate (DEHP) / Dioctyl Phthalate (DOP)	117-81-7	ND	ND	ND	0.005	0.1
Diisononyl Phthalate (DINP)	28553-12-0 68515-48-0	ND	0.015	ND	0.005	0.1
Di-n-Hexyl phthalate (DHP/DnHP/DHEXP)	84-75-3	ND	ND	ND	0.005	0.1
Diisobutyl phthalate (DIBP)	84-69-5	ND	ND	ND	0.005	0.1
Di-n-pentyl phthalate (DPP/DPEP/DPENP)	131-18-0	ND	ND	ND	0.005	0.1
Dicyclohexyl phthalate (DCHP)	84-61-7	ND	ND	ND	0.005	0.1



SGS-CSTC Technical Services Co., Ltd.
Shenzhen Branch Testing Center Hardlines

Unless otherwise agreed in writing, this document is issued by the Company subject to its General Conditions of Service printed overleaf, available on request or accessible at <http://www.sgs.com/en/Terms-and-Conditions.aspx> and, for electronic format documents, subject to Terms and Conditions for Electronic Documents at <http://www.sgs.com/en/Terms-and-Conditions/Terms-e-Documents.aspx>. Attention is drawn to the limitation of liability, indemnification and jurisdiction issues defined therein. Any holder of this document is advised that information contained hereon reflects the Company’s findings at the time of its intervention only and within the limits of Client’s instructions, if any. The Company’s sole responsibility is to its Client and this document does not exonerate parties to a transaction from exercising all their rights and obligations under the transaction documents. This document cannot be reproduced except in full, without prior written approval of the Company. Any unauthorized alteration, forgery or falsification of the content or appearance of this document is unlawful and offenders may be prosecuted to the fullest extent of the law. Unless otherwise stated the results shown in this test report refer only to the sample(s) tested and such sample(s) are retained for 30 days only.

Attention: To check the authenticity of testing / inspection report & certificate, please contact us at telephone:(86-755) 8307 1443, or email: CN.Doccheck@sgs.com

Room 101-501, Plant 4 & Room 101, Plant 2 & Room 101, Plant 3 & Room 301-501, Plant 3, Jianghao (Banian) Industrial Plant Area, No.430, Jihua Road, Banian Community, Banian Street, Longgang District, Shenzhen, Guangdong, China 518129 www.sgs.com.cn
中国·广东·深圳市龙岗区坂田街道坂田社区吉华路430号江源(坂田)工业区厂房4号 101-901、2号101、3号101、3号301-501 邮编: 518129 t:(86-755) 25328888 sgs.china@sgs.com

Test Item(s)	CAS No.	Result (s) (%)			MDL (%)	Permissible Limit (%)
		19	19	19		
Alias No.	--	19	19	19	MDL (%)	Permissible Limit (%)
Tracing No.	--	4	5	6		
Specimen No.	--	4	5	6		
Dibutyl Phthalate (DBP)	84-74-2	ND	ND	ND	0.005	0.1
Benzylbutyl Phthalate (BBP)	85-68-7	ND	ND	ND	0.005	0.1
Di-(2-ethyl hexyl) phthalate (DEHP) / Dioctyl Phthalate (DOP)	117-81-7	ND	ND	ND	0.005	0.1
Diisononyl Phthalate (DINP)	28553-12-0 68515-48-0	ND	ND	ND	0.005	0.1
Di-n-Hexyl phthalate (DHP/DnHP/DHEXP)	84-75-3	ND	ND	ND	0.005	0.1
Diisobutyl phthalate (DIBP)	84-69-5	ND	ND	ND	0.005	0.1
Di-n-pentyl phthalate (DPP/DPEP/DPENP)	131-18-0	ND	ND	ND	0.005	0.1
Dicyclohexyl phthalate (DCHP)	84-61-7	ND	ND	ND	0.005	0.1

Test Item(s)	CAS No.	Result (s) (%)		MDL (%)	Permissible Limit (%)
		19	19		
Alias No.	--	19	19	MDL (%)	Permissible Limit (%)
Tracing No.	--	7	8		
Specimen No.	--	7	8		
Dibutyl Phthalate (DBP)	84-74-2	ND	ND	0.005	0.1
Benzylbutyl Phthalate (BBP)	85-68-7	ND	ND	0.005	0.1
Di-(2-ethyl hexyl) phthalate (DEHP) / Dioctyl Phthalate (DOP)	117-81-7	ND	ND	0.005	0.1
Diisononyl Phthalate (DINP)	28553-12-0 68515-48-0	ND	ND	0.005	0.1
Di-n-Hexyl phthalate (DHP/DnHP/DHEXP)	84-75-3	ND	ND	0.005	0.1
Diisobutyl phthalate (DIBP)	84-69-5	ND	ND	0.005	0.1
Di-n-pentyl phthalate (DPP/DPEP/DPENP)	131-18-0	ND	ND	0.005	0.1
Dicyclohexyl phthalate (DCHP)	84-61-7	ND	ND	0.005	0.1



Unless otherwise agreed in writing, this document is issued by the Company subject to its General Conditions of Service printed overleaf, available on request or accessible at <http://www.sgs.com/en/Terms-and-Conditions.aspx> and, for electronic format documents, subject to Terms and Conditions for Electronic Documents at <http://www.sgs.com/en/Terms-and-Conditions/Terms-e-Documents.aspx>. Attention is drawn to the limitation of liability, indemnification and jurisdiction issues defined therein. Any holder of this document is advised that information contained hereon reflects the Company's findings at the time of its intervention only and within the limits of Client's instructions, if any. The Company's sole responsibility is to its Client and this document does not exonerate parties to a transaction from exercising all their rights and obligations under the transaction documents. This document cannot be reproduced except in full, without prior written approval of the Company. Any unauthorized alteration, forgery or falsification of the content or appearance of this document is unlawful and offenders may be prosecuted to the fullest extent of the law. Unless otherwise stated the results shown in this test report refer only to the sample(s) tested and such sample(s) are retained for 30 days only.

Attention: To check the authenticity of testing / inspection report & certificate, please contact us at telephone:(86-755) 8307 1443, or email: CN.Doccheck@sgs.com

Test Item(s)	CAS No.	Result (s) (%)		MDL (%)	Permissible Limit (%)
Alias No.	--	19	19		
Tracing No.	--	9	10		
Specimen No.	--	9	10		
Dibutyl Phthalate (DBP)	84-74-2	ND	ND	0.005	0.1
Benzylbutyl Phthalate (BBP)	85-68-7	ND	ND	0.005	0.1
Di-(2-ethyl hexyl) phthalate (DEHP) / Dioctyl Phthalate (DOP)	117-81-7	ND	ND	0.005	0.1
Diisononyl Phthalate (DINP)	28553-12-0 68515-48-0	ND	ND	0.005	0.1
Di-n-Hexyl phthalate (DHP/DnHP/DHEXP)	84-75-3	ND	ND	0.005	0.1
Diisobutyl phthalate (DIBP)	84-69-5	ND	ND	0.005	0.1
Di-n-pentyl phthalate (DPP/DPEP/DPENP)	131-18-0	ND	ND	0.005	0.1
Dicyclohexyl phthalate (DCHP)	84-61-7	ND	ND	0.005	0.1

Specimen Description:

1. Shiny silvery coating (Bodywork, light, steering wheel) + Multi-color coating on paper label (Sticker)
2. Silvery-grey coating on metal (Push handle) + Dull silvery-grey coating on metal (Push handle)
3. Laminated white paper label w/ multi-color printing (Sticker) + Laminated off-white paper label w/ yellow, black printing (Sticker) + Translucent cream hot melt glue (Light)
4. Black plastic (Cable jacket) + White paper label (Sticker) + Transparent plastic label w/ white, red printing (Sticker)
5. Transparent plastic sheet (Mirror) + Black plastic (Bodywork, steering wheel, mirror, chassis, accessory) + Pearl silvery-grey plastic (Wheel cover)
6. Matt-black plastic (Seat, seat backrest) + Black plastic (Buckle) + Transparent plastic (Windshield, light cover)
7. Pink plastic (Bodywork) + Grey plastic (Push handle) + Bright black plastic (Chassis, push handle)
8. Off-white plastic (Washer) + Matt-black plastic (Bodywork, light, steering wheel) + Black plastic sheet (Holder)
9. Off-white plastic (Push handle) + Dark pink plastic (Holder)
10. White plastic (Holder) + Snow-white plastic (Bodywork)



Unless otherwise agreed in writing, this document is issued by the Company subject to its General Conditions of Service printed overleaf, available on request or accessible at <http://www.sgs.com/en/Terms-and-Conditions.aspx> and, for electronic format documents, subject to Terms and Conditions for Electronic Documents at <http://www.sgs.com/en/Terms-and-Conditions/Terms-e-Documents.aspx>. Attention is drawn to the limitation of liability, indemnification and jurisdiction issues defined therein. Any holder of this document is advised that information contained hereon reflects the Company's findings at the time of its intervention only and within the limits of Client's instructions, if any. The Company's sole responsibility is to its Client and this document does not exonerate parties to a transaction from exercising all their rights and obligations under the transaction documents. This document cannot be reproduced except in full, without prior written approval of the Company. Any unauthorized alteration, forgery or falsification of the content or appearance of this document is unlawful and offenders may be prosecuted to the fullest extent of the law. Unless otherwise stated the results shown in this test report refer only to the sample(s) tested and such sample(s) are retained for 30 days only.

Attention: To check the authenticity of testing / inspection report & certificate, please contact us at telephone:(86-755) 8307 1443, or email: CN.Doccheck@sgs.com

- Note:
- % = percentage by weight
 - ND = Not Detected (lower than MDL)
 - MDL = Method Detection Limit
 - 1% = 10000 mg/kg = 10000 ppm

The below note(s) is(are) applicable in case the relevant superscript(s) and symbol(s) was(were) shown in the result table:

- + Composite test has been performed as per client's request and the results are calculated using the total specimen weight
- ^Δ Result is made based on the composite test which may have the probability of one or more components that can lead to a failure conclusion. Individual test is highly recommended for each component
- * Exceeds Permissible Limit

TOYS REGULATIONS (SOR/2011-17) OF CANADA CONSUMER PRODUCT SAFETY ACT (S.C.2010, c. 21). (INCLUDING AMENDMENTS SOR/2012-71, SOR/2016-195, SOR/2016-302, SOR/2018-138, SOR/2022-122 AND SOR/2024-217)

AS SPECIFIED IN TOYS REGULATIONS (SOR/2011-17) OF CANADA CONSUMER PRODUCT SAFETY ACT (S.C.2010, c. 21). (INCLUDING AMENDMENTS SOR/2012-71, SOR/2016-195, SOR/2016-302, SOR/2018-138, SOR/2022-122 AND SOR/2024-217)

Clauses relevant to the item:

Section	Description	Result
Section 3	General	N/A
Section 4	Packaging	PASS
Section 5	Electrically Operated Toys	N/A
Section 6	Electrically operated wood-burning tool (Electrically heated toys)	N/A
Section 7	Small Objects	PASS
Section 8	Metal Edge	PASS
Section 9	Embedded Wires Frame or Structure	N/A
Section 10	Plastic Components	PASS
Section 11	Wooden Components	N/A
Section 12	Toys with Glass Component	N/A
Section 13	Fasteners	PASS
Section 14	Folding Mechanism, bracket or bracing	N/A
Section 15	Spring-wound Driving Mechanism	N/A
Section 16	Projectiles	N/A



Unless otherwise agreed in writing, this document is issued by the Company subject to its General Conditions of Service printed overleaf, available on request or accessible at <http://www.sgs.com/en/Terms-and-Conditions.aspx> and, for electronic format documents, subject to Terms and Conditions for Electronic Documents at <http://www.sgs.com/en/Terms-and-Conditions/Terms-e-Documents.aspx>. Attention is drawn to the limitation of liability, indemnification and jurisdiction issues defined therein. Any holder of this document is advised that information contained hereon reflects the Company's findings at the time of its intervention only and within the limits of Client's instructions, if any. The Company's sole responsibility is to its Client and this document does not exonerate parties to a transaction from exercising all their rights and obligations under the transaction documents. This document cannot be reproduced except in full, without prior written approval of the Company. Any unauthorized alteration, forgery or falsification of the content or appearance of this document is unlawful and offenders may be prosecuted to the fullest extent of the law. Unless otherwise stated the results shown in this test report refer only to the sample(s) tested and such sample(s) are retained for 30 days only.

Attention: To check the authenticity of testing / inspection report & certificate, please contact us at telephone:(86-755) 8307 1443, or email: CN.Doccheck@sgs.com

Section	Description	Result
Section 17	Enclosures	N/A
Section 18	Stationary Toys Intended to Bear the Weight of a Child	N/A
Section 19	Noise Level of Toys	PASS
Section 20	Heated Surfaces, parts or substances	PASS
Section 21	Celluloid or Cellulose Nitrate	PASS
Section 22	Specific Toxic Substances	N/A
Section 23	Heavy Metals Contents in Surface Coatings/Paint	PASS (See Result Page)
Section 24	Organic Solvents in Balloon Blowing Kits	N/A
Section 25	Toxic substance	N/A
Section 26	Corrosive substance, irritant or sensitizer	N/A
Section 27	Plastic Materials Used in Toys Intended for Children Under 3 Years	PASS (See Result Page)
Section 28	Dolls and Soft Toys- Fastenings	N/A
Section 29	Doll and Soft Toys-Stuffing Material**	N/A
Section 30	Doll and Soft Toys – Small Parts	N/A
Section 31	Doll and Soft Toys –Eyes or Nose	N/A
Section 32	Flammability of Flat / Raised Fibre Textile Material	N/A
Section 33	Flammability of Yarn Filaments	N/A
Section 34	Flammability of Hair / Mane	N/A
Section 35	Plant Seeds – Noise	N/A
Section 36	Plant Seeds –Stuffing Material	N/A
Section 37	Pull and Push Toys	PASS
Section 38	Toy Steam Engines	N/A
Section 39	Finger Paints	N/A
Section 40	Rattles	N/A
Section 41	Elastics intended for attaching toys, across a baby carriage, crib or playpen	N/A
Section 42	Yo-yo Type Balls	N/A
Section 43	Magnetic Toys	N/A
Section 44	Warning for magnetic toys	N/A
Section 45	Toys Intended to be Entered by a Child-Exception	N/A
Section 46	Toys Intended to be Entered by a Child-Requirements and testing	N/A
Section 47	Toys Intended to be Entered by a Child-Warning	N/A
M00.1	Small Components	PASS
M00.2	Sharp Edges	PASS



Unless otherwise agreed in writing, this document is issued by the Company subject to its General Conditions of Service printed overleaf, available on request or accessible at <http://www.sgs.com/en/Terms-and-Conditions.aspx> and, for electronic format documents, subject to Terms and Conditions for Electronic Documents at <http://www.sgs.com/en/Terms-and-Conditions/Terms-e-Document.aspx>. Attention is drawn to the limitation of liability, indemnification and jurisdiction issues defined therein. Any holder of this document is advised that information contained hereon reflects the Company's findings at the time of its intervention only and within the limits of Client's instructions, if any. The Company's sole responsibility is to its Client and this document does not exonerate parties to a transaction from exercising all their rights and obligations under the transaction documents. This document cannot be reproduced except in full, without prior written approval of the Company. Any unauthorized alteration, forgery or falsification of the content or appearance of this document is unlawful and offenders may be prosecuted to the fullest extent of the law. Unless otherwise stated the results shown in this test report refer only to the sample(s) tested and such sample(s) are retained for 30 days only.

Attention: To check the authenticity of testing / inspection report & certificate, please contact us at telephone:(86-755) 8307 1443, or email: CN.Doccheck@sgs.com

Section	Description	Result
M00.3	Sharp Points	PASS
M00.4	Eye/Nose Security-Dolls, Plush Toys and Soft Toys	N/A
M01.1	Reasonable Foreseeable Use	PASS
M03	Test for Flexible Film Bags	PASS
M04	Test to Determine The Noise Level of Toys	PASS
M05	Test for Rattles	N/A

Remark: It is drawn to your attention that all the statement or warning statement which stated in product or its package should be appeared in English and French Bilingual as specified in section 3 of this regulation.

Canada Consumer Product Safety Act (S.C. 2010, c. 21), Toys Regulations (SOR/2011-17) (Including amendments SOR/2012-71, SOR/2016-195, SOR/2016-302, SOR/2018-138, SOR/2022-122 and SOR/2024-217) - Section 23 (a) and Section 23 (c) - Lead and Mercury in surface coating material

Method: With reference to Canada Health Product Safety Bureau, Reference Manual Book 5 – Laboratory Policies and Procedures, Part B: Test Methods Section, Method C02.2.2:2020 / C07:2023
 Analysis was performed by Inductively Coupled Plasma Optical Emission Spectrometer (ICP-OES).

Test Item(s)	Pb	Hg		
MDL (mg/kg)	20	10		
Permissible Limit (mg/kg)	90	10		
Specimen Description	Alias No.	Tracing No.	Result(s) (mg/kg)	
1. Shiny silvery coating (Bodywork, light, steering wheel) + Multi-color coating on paper label (Sticker)	12	1	32	ND
2. Silvery-grey coating on metal (Push handle) + Dull silvery-grey coating on metal (Push handle)	12	2	ND	ND
3. Laminated white paper label w/ multi-color printing (Sticker) + Laminated off-white paper label w/ yellow, black printing (Sticker)	18	1	ND	ND
4. White paper label (Sticker) + Transparent plastic label w/ white, red printing (Sticker)	18	2	ND	ND



Unless otherwise agreed in writing, this document is issued by the Company subject to its General Conditions of Service printed overleaf, available on request or accessible at <http://www.sgs.com/en/Terms-and-Conditions.aspx> and, for electronic format documents, subject to Terms and Conditions for Electronic Documents at <http://www.sgs.com/en/Terms-and-Conditions/Terms-e-Document.aspx>. Attention is drawn to the limitation of liability, indemnification and jurisdiction issues defined therein. Any holder of this document is advised that information contained hereon reflects the Company's findings at the time of its intervention only and within the limits of Client's instructions, if any. The Company's sole responsibility is to its Client and this document does not exonerate parties to a transaction from exercising all their rights and obligations under the transaction documents. This document cannot be reproduced except in full, without prior written approval of the Company. Any unauthorized alteration, forgery or falsification of the content or appearance of this document is unlawful and offenders may be prosecuted to the fullest extent of the law. Unless otherwise stated the results shown in this test report refer only to the sample(s) tested and such sample(s) are retained for 30 days only.

Attention: To check the authenticity of testing / inspection report & certificate, please contact us at telephone:(86-755) 8307 1443, or email: CN.Doccheck@sgs.com

Test Report

No.: T52510340678TY-01

Date: OCT 24, 2025

Page 26 of 35

- Note:
- mg/kg = milligram per kilogram
 - ND = Not Detected (lower than MDL)
 - MDL = Method Detection Limit

The below note(s) is(are) applicable in case the relevant superscript(s) and symbol(s) was(were) shown in the result table:

- + Composite test has been performed as per client's request and the results are calculated using the minimum specimen weight
- * Exceed Permissible Limit

Canada Consumer Product Safety Act (S.C. 2010, c. 21), Toys Regulations (SOR/2011-17) (Including amendments SOR/2012-71, SOR/2016-195, SOR/2016-302, SOR/2018-138, SOR/2022-122 and SOR/2024-217) - Section 23 (b) - Heavy metals in surface coating material

Method: With reference to Canada Health Product Safety Bureau, Reference Manual Book 5 – Laboratory Policies and Procedures, Part B: Test Methods Section, Method C02.2.2:2020 / CPSC-CH-E1003-09.1 / ASTM F963-23 Clause 8.3

Analysis was performed by Inductively Coupled Plasma Optical Emission Spectrometer (ICP-OES).

For Soluble Heavy Metal Content:

Test Item(s)	Sb	As	Ba	Cd	Se
MDL (mg/kg)	50	50	50	50	50
Permissible Limit (mg/kg)	1000	1000	1000	1000	1000
Specimen Description	Alias No.	Tracing No.	Soluble Result(s) (mg/kg)		
1. Laminated white paper label w/ multi-color printing (Sticker)	24	1	ND	ND	ND
2. Laminated off-white paper label w/ yellow, black printing (Sticker)	24	2	ND	ND	ND
3. White paper label (Sticker)	24	3	ND	ND	ND
4. Transparent plastic label w/ white, red printing (Sticker)	24	4	ND	ND	ND
5. Shiny silvery coating (Bodywork, light, steering wheel)	24	5	ND	ND	ND
6. Multi-color coating on paper label (Sticker)	24	6	ND	ND	ND
7. Silvery-grey coating on metal (Push handle)	24	7	ND	ND	ND
8. Dull silvery-grey coating on metal (Push handle)	24	8	ND	ND	ND



Unless otherwise agreed in writing, this document is issued by the Company subject to its General Conditions of Service printed overleaf, available on request or accessible at <http://www.sgs.com/en/Terms-and-Conditions.aspx> and, for electronic format documents, subject to Terms and Conditions for Electronic Documents at <http://www.sgs.com/en/Terms-and-Conditions/Terms-e-Documents.aspx>. Attention is drawn to the limitation of liability, indemnification and jurisdiction issues defined therein. Any holder of this document is advised that information contained hereon reflects the Company's findings at the time of its intervention only and within the limits of Client's instructions, if any. The Company's sole responsibility is to its Client and this document does not exonerate parties to a transaction from exercising all their rights and obligations under the transaction documents. This document cannot be reproduced except in full, without prior written approval of the Company. Any unauthorized alteration, forgery or falsification of the content or appearance of this document is unlawful and offenders may be prosecuted to the fullest extent of the law. Unless otherwise stated the results shown in this test report refer only to the sample(s) tested and such sample(s) are retained for 30 days only.

Attention: To check the authenticity of testing / inspection report & certificate, please contact us at telephone:(86-755) 8307 1443, or email: CN.Doccheck@sgs.com

SGS-CSTC Shenzhen Technical Services Co., Ltd.
Shenzhen Branch Testing Center Hardlines

Room 101-501, Plant 4 & Room 101, Plant 2 & Room 101, Plant 3 & Room 301-501, Plant 3, Jilanghao (Banian) Industrial Plant Area, No.430, Jilang Road, Banian Community, Longgang District, Shenzhen, Guangdong, China 518129 www.sgs.com.cn
中国·广东·深圳市龙岗区坂田街道坂田社区吉华路430号江源(坂田)工业厂区厂房4号 101-901、2号101、3号301-501 邮编: 518129 t:(86-755) 25328888 sgs.china@sgs.com

Test Report

No.: T52510340678TY-01

Date: OCT 24, 2025

Page 27 of 35

- Note:
- mg/kg = milligram per kilogram
 - ND = Not Detected (lower than MDL)
 - MDL = Method Detection Limit

The below note(s) is(are) applicable in case the relevant superscript(s) and symbol(s) was(were) shown in the result table:

- * Exceed Permissible Limit

Canada Consumer Product Safety Act (S.C. 2010, c. 21), Toys Regulations (SOR/2011-17) (Including amendments SOR/2012-71, SOR/2016-195, SOR/2016-302, SOR/2018-138, SOR/2022-122 and SOR/2024-217) - Section 27 – Heavy metal Content

Method: With reference to Canada Health Product Safety Bureau, Reference Manual Book 5 - Laboratory Policies and Procedures, Part B: Test Methods Section, Method C02.3.2:2021 / C07:2023 / CPSC-CH-E1002-08.3 / ASTM F963-23 Clause 8.3
 Analysis was performed by Inductively Coupled Plasma Optical Emission Spectrometer (ICP-OES)

Total Heavy Metal Content

Test Item(s)			Pb	Hg
MDL (mg/kg)			20	10
Permissible Limit (mg/kg)			90	10
Specimen Description	Alias No.	Tracing No.	Result(s) (mg/kg)	
1. Transparent plastic sheet (Mirror) + Black plastic (Bodywork, steering wheel, mirror, chassis, accessory) + Pearl silvery-grey plastic (Wheel cover)	16	1	ND	ND
2. Matt-black plastic (Seat, seat backrest) + Black plastic (Buckle) + Transparent plastic (Windshield, light cover)	16	2	ND	ND
3. Pink plastic (Bodywork) + Grey plastic (Push handle) + Bright black plastic (Chassis, push handle)	16	3	ND	ND
4. Off-white plastic (Washer) + Matt-black plastic (Bodywork, light, steering wheel) + Black plastic sheet (Holder)	16	4	ND	ND
5. Off-white plastic (Push handle) + Dark pink plastic (Holder) + White plastic (Holder)	16	5	ND	ND
6. Snow-white plastic (Bodywork) + Translucent cream hot melt glue (Light) + Black plastic (Cable jacket)	16	6	ND	ND



Unless otherwise agreed in writing, this document is issued by the Company subject to its General Conditions of Service printed overleaf, available on request or accessible at <http://www.sgs.com/en/Terms-and-Conditions.aspx> and, for electronic format documents, subject to Terms and Conditions for Electronic Documents at <http://www.sgs.com/en/Terms-and-Conditions/Terms-e-Documents.aspx>. Attention is drawn to the limitation of liability, indemnification and jurisdiction issues defined therein. Any holder of this document is advised that information contained hereon reflects the Company's findings at the time of its intervention only and within the limits of Client's instructions, if any. The Company's sole responsibility is to its Client and this document does not exonerate parties to a transaction from exercising all their rights and obligations under the transaction documents. This document cannot be reproduced except in full, without prior written approval of the Company. Any unauthorized alteration, forgery or falsification of the content or appearance of this document is unlawful and offenders may be prosecuted to the fullest extent of the law. Unless otherwise stated the results shown in this test report refer only to the sample(s) tested and such sample(s) are retained for 30 days only.

Attention: To check the authenticity of testing / inspection report & certificate, please contact us at telephone:(86-755) 8307 1443, or email: CN.Doccheck@sgs.com

SGS-CSTC Shenzhen Technical Services Co., Ltd.
 Shenzhen Branch Testing Center Hardlines

Room 101-501, Plant 4 & Room 101, Plant 2 & Room 101, Plant 3 & Room 301-501, Plant 3, Jilanghao (Banian) Industrial Plant Area, No.430, Jilua Road, Banian Community, Banian Street, Longgang District, Shenzhen, Guangdong, China 518129 www.sgs.com.cn
 中国·广东·深圳市龙岗区坂田街道坂田社区吉华路430号江源(坂田)工业厂区厂房4号 101-901、2号101、3号301-501 邮编: 518129 t:(86-755) 25328888 sgs.china@sgs.com

Soluble Heavy Metal Content

Test Item(s)			Sb	As	Ba	Cd	Cr	Se
MDL (mg/kg)			5	2.5	10	5	5	10
Migration Limit (mg/kg)			60	25	1000	75	60	500
Specimen No.	Alias No.	Tracing No.	Adjusted Migration Result(s) (mg/kg)					
1	23	1	ND	ND	ND	ND	ND	ND
2	23	2	ND	ND	ND	ND	ND	ND
3	23	3	ND	ND	ND	ND	ND	ND
4	23	4	ND	ND	ND	ND	ND	ND
5	23	5	ND	ND	ND	ND	ND	ND
6	23	6	ND	ND	ND	ND	ND	ND
7	23	7	ND	ND	ND	ND	ND	ND
8	23	8	ND	ND	ND	ND	ND	ND
9	23	9	ND	ND	ND	ND	ND	ND
10	23	10	ND	ND	ND	ND	ND	ND
11	23	11	ND	ND	ND	ND	ND	ND
12	23	12	ND	ND	ND	ND	ND	ND
13	23	13	ND	ND	ND	ND	ND	ND
14	23	14	ND	ND	ND	ND	ND	ND
15	23	15	ND	ND	ND	ND	ND	ND
16	23	16	ND	ND	ND	ND	ND	ND
17	23	17	ND	ND	ND	ND	ND	ND
18	23	18	ND	ND	ND	ND	ND	ND

Specimen Description:

1. Transparent plastic sheet (Mirror)
2. Black plastic (Bodywork, steering wheel, mirror, chassis, accessory)
3. Pearl silvery-grey plastic (Wheel cover)
4. Matt-black plastic (Seat, seat backrest)
5. Black plastic (Buckle)
6. Transparent plastic (Windshield, light cover)
7. Pink plastic (Bodywork)
8. Grey plastic (Push handle)
9. Bright black plastic (Chassis, push handle)
10. Off-white plastic (Washer)
11. Matt-black plastic (Bodywork, light, steering wheel)
12. Black plastic sheet (Holder)
13. Off-white plastic (Push handle)



Unless otherwise agreed in writing, this document is issued by the Company subject to its General Conditions of Service printed overleaf, available on request or accessible at <http://www.sgs.com/en/Terms-and-Conditions.aspx> and, for electronic format documents, subject to Terms and Conditions for Electronic Documents at <http://www.sgs.com/en/Terms-and-Conditions/Terms-e-Document.aspx>. Attention is drawn to the limitation of liability, indemnification and jurisdiction issues defined therein. Any holder of this document is advised that information contained hereon reflects the Company's findings at the time of its intervention only and within the limits of Client's instructions, if any. The Company's sole responsibility is to its Client and this document does not exonerate parties to a transaction from exercising all their rights and obligations under the transaction documents. This document cannot be reproduced except in full, without prior written approval of the Company. Any unauthorized alteration, forgery or falsification of the content or appearance of this document is unlawful and offenders may be prosecuted to the fullest extent of the law. Unless otherwise stated the results shown in this test report refer only to the sample(s) tested and such sample(s) are retained for 30 days only.

Attention: To check the authenticity of testing / inspection report & certificate, please contact us at telephone:(86-755) 8307 1443, or email: CN.Doccheck@sgs.com

Specimen Description:

- 14. Dark pink plastic (Holder)
- 15. White plastic (Holder)
- 16. Snow-white plastic (Bodywork)
- 17. Translucent cream hot melt glue (Light)
- 18. Black plastic (Cable jacket)

- Note:
- mg/kg = milligram per kilogram
 - ND = Not Detected (lower than MDL)
 - MDL = Method Detection Limit
 - 1% = 10000 mg/kg = 10000 ppm

The below note(s) is(are) applicable in case the relevant superscript(s) and symbol(s) was(were) shown in the result table:

- + Composite test has been performed as per client's request and the results are calculated using the minimum specimen weight
- * Exceed Permissible Limit

Canada Consumer Product Safety Act (S.C. 2010, c. 21), Consumer Products Containing Lead Regulations, SOR/2018-83 – Total Lead content

Method : With reference to Canada Health Product Safety Bureau, Reference Manual Book 5 - Laboratory Policies and Procedures, Part B: Test Methods Section, Method C02.2.2:2020 / C02.3.2:2021 / C02.4.1:2019 Analysis was performed by Inductively Coupled Plasma Optical Emission Spectrometer (ICP-OES)

Test Item(s)	Lead (Pb)		
MDL (mg/kg)	20		
Permissible Limit (mg/kg)	90		
Specimen Description	Alias No.	Tracing No.	Result(s) (mg/kg)
1. Silvery solder point	2	1	ND
2. Silvery metal screw (Windshield)	5	1	ND
3. Silvery-blue metal axle	5	2	ND
4. Silvery metal thick tube (Push handle)	5	3	ND
5. Silvery metal thin tube (Push handle)	5	4	ND
6. Silvery metal snap (Push handle)	5	5	ND
7. Black metal big screw (Push handle)	5	6	ND
8. Black metal small screw (Push handle, seat backrest)	5	7	ND
9. Silvery metal screw (Wheel)	5	8	ND
10. Silvery metal screw (Steering wheel)	5	9	ND



Unless otherwise agreed in writing, this document is issued by the Company subject to its General Conditions of Service printed overleaf, available on request or accessible at <http://www.sgs.com/en/Terms-and-Conditions.aspx> and, for electronic format documents, subject to Terms and Conditions for Electronic Documents at <http://www.sgs.com/en/Terms-and-Conditions/Terms-e-Documents.aspx>. Attention is drawn to the limitation of liability, indemnification and jurisdiction issues defined therein. Any holder of this document is advised that information contained hereon reflects the Company's findings at the time of its intervention only and within the limits of Client's instructions, if any. The Company's sole responsibility is to its Client and this document does not exonerate parties to a transaction from exercising all their rights and obligations under the transaction documents. This document cannot be reproduced except in full, without prior written approval of the Company. Any unauthorized alteration, forgery or falsification of the content or appearance of this document is unlawful and offenders may be prosecuted to the fullest extent of the law. Unless otherwise stated the results shown in this test report refer only to the sample(s) tested and such sample(s) are retained for 30 days only.

Attention: To check the authenticity of testing / inspection report & certificate, please contact us at telephone:(86-755) 8307 1443, or email: CN.Doccheck@sgs.com

Test Item(s)	Lead (Pb)		
MDL (mg/kg)	20		
Permissible Limit (mg/kg)	90		
Specimen Description	Alias No.	Tracing No.	Result(s) (mg/kg)
11. Black metal screw (Steering wheel)	5	10	ND
12. Black metal screw (Accessory)	5	11	ND
13. Black metal bolt (Accessory)	5	12	ND
14. Black metal nut (Accessory)	5	13	ND
15. Silvery-blue metal washer	5	14	ND
16. Silvery-blue metal thick piece	5	15	ND
17. Black metal screw (Chassis)	5	16	ND
18. Silvery-blue metal thin piece	5	17	ND
19. Silvery metal big nut	5	18	ND
20. Silvery metal small nut	5	19	ND
21. Silvery metal big cap screw	5	20	ND
22. Silvery metal small cap screw	5	21	ND
23. Silvery metal big screw (Chassis)	5	22	ND
24. Silvery metal medium screw (Chassis)	5	23	ND
25. Silvery metal small screw (Chassis)	5	24	ND
26. Shiny silvery coating (Bodywork, light, steering wheel) + Multi-color coating on paper label (Sticker)	9	1	32
27. Silvery-grey coating on metal (Push handle) + Dull silvery-grey coating on metal (Push handle)	9	2	ND
28. Laminated white paper label w/ multi-color printing (Sticker) + Laminated off-white paper label w/ yellow, black printing (Sticker)	14	1	ND
29. White paper label (Sticker) + Transparent plastic label w/ white, red printing (Sticker)	14	2	ND
30. Transparent plastic sheet (Mirror) + Black plastic (Bodywork, steering wheel, mirror, chassis, accessory) + Pearl silvery-grey plastic (Wheel cover)	14	3	ND
31. Matt-black plastic (Seat, seat backrest) + Black plastic (Buckle) + Transparent plastic (Windshield, light cover)	14	4	ND
32. Pink plastic (Bodywork) + Grey plastic (Push handle) + Bright black plastic (Chassis, push handle)	14	5	ND
33. Off-white plastic (Washer) + Matt-black plastic (Bodywork, light, steering wheel) + Black plastic sheet (Holder)	14	6	ND
34. Off-white plastic (Push handle) + Dark pink plastic (Holder) + White plastic (Holder)	14	7	ND
35. Snow-white plastic (Bodywork) + Translucent cream hot melt glue (Light) + Black plastic (Cable jacket)	14	8	ND



Unless otherwise agreed in writing, this document is issued by the Company subject to its General Conditions of Service printed overleaf, available on request or accessible at <http://www.sgs.com/en/Terms-and-Conditions.aspx> and, for electronic format documents, subject to Terms and Conditions for Electronic Documents at <http://www.sgs.com/en/Terms-and-Conditions/Terms-e-Documents.aspx>. Attention is drawn to the limitation of liability, indemnification and jurisdiction issues defined therein. Any holder of this document is advised that information contained hereon reflects the Company's findings at the time of its intervention only and within the limits of Client's instructions, if any. The Company's sole responsibility is to its Client and this document does not exonerate parties to a transaction from exercising all their rights and obligations under the transaction documents. This document cannot be reproduced except in full, without prior written approval of the Company. Any unauthorized alteration, forgery or falsification of the content or appearance of this document is unlawful and offenders may be prosecuted to the fullest extent of the law. Unless otherwise stated the results shown in this test report refer only to the sample(s) tested and such sample(s) are retained for 30 days only.

Attention: To check the authenticity of testing / inspection report & certificate, please contact us at telephone:(86-755) 8307 1443, or email: CN.Doccheck@sgs.com

Test Report

No.: T52510340678TY-01

Date: OCT 24, 2025

Page 31 of 35

- Note:
- mg/kg = milligram per kilogram
 - ND = Not Detected (lower than MDL)
 - MDL = Method Detection Limit

The below note(s) is(are) applicable in case the relevant superscript(s) and symbol(s) was(were) shown in the result table:

- + Composite test has been performed as per client's request and the results are calculated using the minimum specimen weight
- * Exceeds Permissible Limit

Canada Surface Coating Materials Regulations (SOR/2016-193) (Including amendments SOR/2022-122) – Lead Content

With reference to Canada Health Product Safety Bureau, Reference Manual Book 5 – Laboratory Policies and Procedures, Part B: Test Methods Section, Method C02.2.2:2020 / C07:2023

Analysis was performed by Inductively Coupled Plasma Optical Emission Spectrometer (ICP-OES).

Test Item(s)	Total		
	Pb		
MDL (mg/kg)	20		
Permissible Limit (mg/kg)	90		
Specimen Description	Alias No.	Tracing No.	Result(s) (mg/kg)
1. Shiny silvery coating (Bodywork, light, steering wheel) + Multi-color coating on paper label (Sticker)	10	1	32
2. Silvery-grey coating on metal (Push handle) + Dull silvery-grey coating on metal (Push handle)	10	2	ND
3. Laminated white paper label w/ multi-color printing (Sticker) + Laminated off-white paper label w/ yellow, black printing (Sticker)	17	1	ND
4. White paper label (Sticker) + Transparent plastic label w/ white, red printing (Sticker)	17	2	ND

- Note:
- mg/kg = milligram per kilogram
 - ND = Not Detected (lower than MDL)
 - MDL = Method Detection Limit
 - 1% = 10000 mg/kg = 10000 ppm

The below note(s) is(are) applicable in case the relevant superscript(s) and symbol(s) was(were) shown in the result table:

- + Composite test has been performed as per client's request and the results are calculated using the minimum specimen weight
- * Exceed Permissible Limit



Unless otherwise agreed in writing, this document is issued by the Company subject to its General Conditions of Service printed overleaf, available on request or accessible at <http://www.sgs.com/en/Terms-and-Conditions.aspx> and, for electronic format documents, subject to Terms and Conditions for Electronic Documents at <http://www.sgs.com/en/Terms-and-Conditions/Terms-e-Documents.aspx>. Attention is drawn to the limitation of liability, indemnification and jurisdiction issues defined therein. Any holder of this document is advised that information contained hereon reflects the Company's findings at the time of its intervention only and within the limits of Client's instructions, if any. The Company's sole responsibility is to its Client and this document does not exonerate parties to a transaction from exercising all their rights and obligations under the transaction documents. This document cannot be reproduced except in full, without prior written approval of the Company. Any unauthorized alteration, forgery or falsification of the content or appearance of this document is unlawful and offenders may be prosecuted to the fullest extent of the law. Unless otherwise stated the results shown in this test report refer only to the sample(s) tested and such sample(s) are retained for 30 days only.

Attention: To check the authenticity of testing / inspection report & certificate, please contact us at telephone:(86-755) 8307 1443, or email: CN.Doccheck@sgs.com

SGS-CSTC (Shenzhen) Technical Services Co., Ltd.
Shenzhen Branch Testing Center Hardlines

Room 101-501, Plant 4 & Room 101, Plant 2 & Room 101, Plant 3 & Room 301-501, Plant 3, Jilanghao (Banlian) Industrial Plant Area, No.430, Jilua Road, Banlian Community, Banlian Street, Longgang District, Shenzhen, Guangdong, China 518129 www.sgs.com.cn
中国·广东·深圳市龙岗区坂田街道坂田社区吉华路 430 号江源 (坂田) 工业区厂房 4 号 101-901、2 号 101、3 号 301-501 邮编: 518129 t:(86-755) 25328888 sgs.china@sgs.com

Canada Phthalates Regulation (SOR/2016-188)(formerly restricted under SOR/2010-298)

Method: With reference to CPSC-CH-C1001-09.4 / Canada Health Product Safety Bureau, Reference Manual Book 5 – Laboratory Policies and Procedures, Part B: Test Methods Section, Method C-34:2018 – Determination of Phthalates in Polyvinyl Chloride Consumer Products

Analysis was performed by Gas Chromatography Mass Spectrometer (GC-MS) / High Performance Liquid Chromatography with Mass Spectrometer (HPLC-MS)

Vinyl Materials that can, in a reasonably foreseeable Manner, be placed in the Mouth of a Child under 4 Years of Age

Test Item(s)	CAS No.	Result (s) (%)		MDL (%)	Permissible Limit (%)
Alias No.	--	21	21		
Tracing No.	--	1	2		
Specimen No.	--	1	2		
Dibutyl Phthalate (DBP)	84-74-2	ND	ND	0.005	0.1
Benzylbutyl Phthalate (BBP)	85-68-7	ND	ND	0.005	0.1
Di-(2-ethyl hexyl) phthalate (DEHP) / Dioctyl Phthalate (DOP)	117-81-7	ND	ND	0.005	0.1
Diisononyl Phthalate (DINP)	28553-12-0 68515-48-0	ND	0.015	0.005	0.1
Di-n-octyl Phthalate (DNOP)	117-84-0	ND	ND	0.005	0.1
Diisodecyl Phthalate (DIDP)	26761-40-0 68515-49-1	ND	ND	0.005	0.1

Test Item(s)	CAS No.	Result (s) (%)		MDL (%)	Permissible Limit (%)
Alias No.	--	21	21		
Tracing No.	--	3	4		
Specimen No.	--	3	4		
Dibutyl Phthalate (DBP)	84-74-2	ND	ND	0.005	0.1
Benzylbutyl Phthalate (BBP)	85-68-7	ND	ND	0.005	0.1
Di-(2-ethyl hexyl) phthalate (DEHP) / Dioctyl Phthalate (DOP)	117-81-7	ND	ND	0.005	0.1
Diisononyl Phthalate (DINP)	28553-12-0 68515-48-0	ND	ND	0.005	0.1
Di-n-octyl Phthalate (DNOP)	117-84-0	ND	ND	0.005	0.1
Diisodecyl Phthalate (DIDP)	26761-40-0 68515-49-1	ND	ND	0.005	0.1

Specimen Description:

1. Shiny silvery coating (Bodywork, light, steering wheel) + Multi-color coating on paper label (Sticker)



Unless otherwise agreed in writing, this document is issued by the Company subject to its General Conditions of Service printed overleaf, available on request or accessible at <http://www.sgs.com/en/Terms-and-Conditions.aspx> and, for electronic format documents, subject to Terms and Conditions for Electronic Documents at <http://www.sgs.com/en/Terms-and-Conditions/Terms-e-Documents.aspx>. Attention is drawn to the limitation of liability, indemnification and jurisdiction issues defined therein. Any holder of this document is advised that information contained hereon reflects the Company's findings at the time of its intervention only and within the limits of Client's instructions, if any. The Company's sole responsibility is to its Client and this document does not exonerate parties to a transaction from exercising all their rights and obligations under the transaction documents. This document cannot be reproduced except in full, without prior written approval of the Company. Any unauthorized alteration, forgery or falsification of the content or appearance of this document is unlawful and offenders may be prosecuted to the fullest extent of the law. Unless otherwise stated the results shown in this test report refer only to the sample(s) tested and such sample(s) are retained for 30 days only.

Attention: To check the authenticity of testing / inspection report & certificate, please contact us at telephone:(86-755) 8307 1443, or email: CN.Doccheck@sgs.com

Specimen Description:

2. Silvery-grey coating on metal (Push handle) + Dull silvery-grey coating on metal (Push handle)
3. Laminated white paper label w/ multi-color printing (Sticker) + Laminated off-white paper label w/ yellow, black printing (Sticker) + Translucent cream hot melt glue (Light)
4. Black plastic (Cable jacket) + White paper label (Sticker) + Transparent plastic label w/ white, red printing (Sticker)

For vinyl in any part of toys for children under 14 years of age and childcare articles for children under 4 years of age

Test Item(s)	CAS No.	Result (s) (%)			MDL (%)	Permissible Limit (%)
Alias No.	--	21	21	21		
Tracing No.	--	5	6	7		
Specimen No.	--	1	2	3		
Dibutyl Phthalate (DBP)	84-74-2	ND	ND	ND	0.005	0.1
Benzylbutyl Phthalate (BBP)	85-68-7	ND	ND	ND	0.005	0.1
Di-(2-ethyl hexyl) phthalate (DEHP) / Dioctyl Phthalate (DOP)	117-81-7	0.006	ND	ND	0.005	0.1

Specimen Description:

1. Red plastic (Wire jacket) + Black plastic (Wire jacket) + Green plastic (Wire jacket)
2. Yellow plastic (Wire jacket) + Translucent yellow hot melt glue (Inner) + Blue plastic (Wire jacket)
3. Transparent soft plastic w/ black layer backing (Button) w/ Black dry glue (Speaker) w/ Translucent dry glue (Speaker) w/ Translucent plastic washer (Battery door) + Cream dry glue w/ silvery printing (Inner)



Sample Picture (As received)

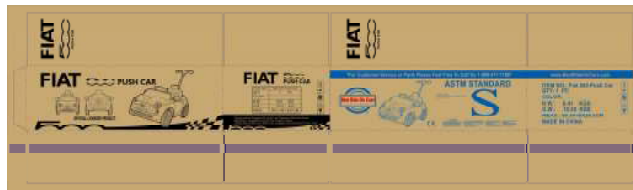
Pic.1



Pic.2



Pic.3



SGS authenticate the photo on original report only

*** End of Report ***

