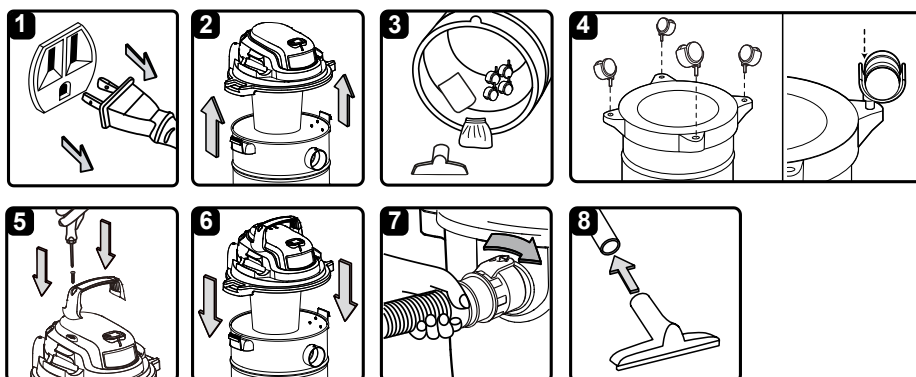


GENERAL ASSEMBLY INSTRUCTIONS




WARNING: DO NOT PLUG POWER CORD INTO POWER OUTLET. MAKE SURE PLUG IS DISCONNECTED BEFORE ASSEMBLING THE WET/DRY VAC.

UNPACKING YOUR WET/DRY VACUUM & GENERAL ASSEMBLY

1. Verify that the power cord is disconnected from the outlet. (Fig. 1)
2. Undo the latches and lift the power head off the collection tank. (Fig. 2)
3. Remove the package contents from inside the collection tank. (Fig. 3)
4. Place the collection tank upside down and insert the casters into the sockets on the bottom of the collection tank. Ensure each caster is aligned straight into the collection tank and apply pressure until the casters snap into place. Use a hand to support the base of the collection tank when pressing in the casters. (Fig. 4)
5. Insert the handle into the slots located on the top of the power head and secure it with the screws provided. Do not over-tighten the screws. (Fig. 5)
6. Place the power head back on the collection tank, and secure into place using the 2 side latches. (Fig. 6)
7. Insert the locking end of the hose into the port on the collection tank and turn clockwise to lock into place. (Fig. 7)
8. Choose the desired accessory and insert onto the end of the hose. (Fig. 8)

Note that a static discharge chain is attached to the bottom of the tank. It is normal for this chain to drag on the ground. Operating the vacuum in dry conditions can build up static, and the chain helps dissipate any build-up by allowing it a path of least resistance to the ground.

POLARIZED PLUG

To reduce the risk of electrical shock, this appliance has a polarized plug (one blade wider than the other). This plug will fit in a polarized outlet only one way. If the plug does not fit fully in the outlet, reverse the plug. If it still does not fit, contact a qualified electrician to install the proper outlet. Do not change the plug in any way. Double insulation  eliminates the need for the three wire grounded power cord and grounded power supply system.