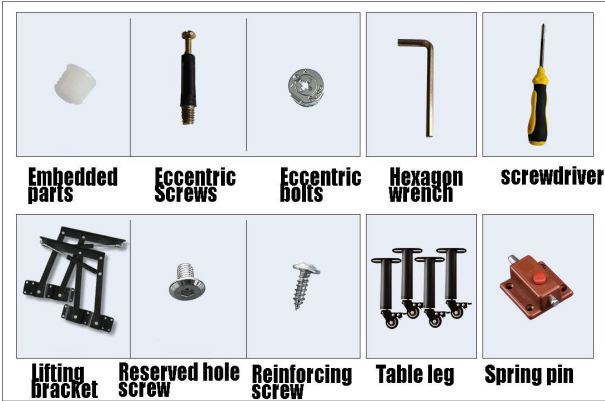
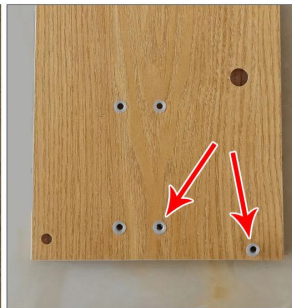


# Installation instruction



1. Take out the screw accessories.



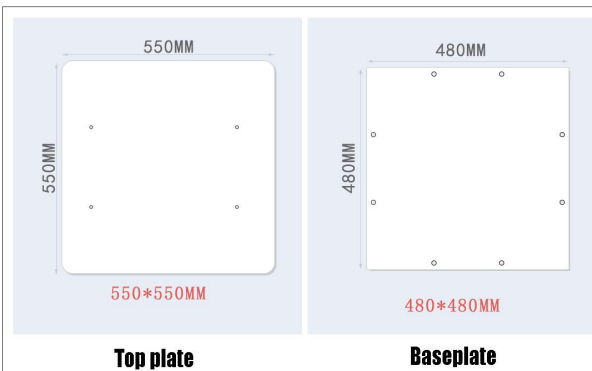
2. Put the white embedded parts into the small holes and tap the panel with a screwdriver.



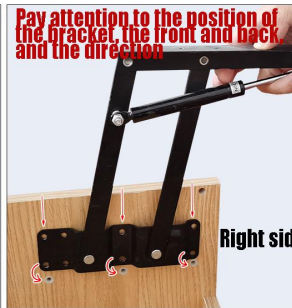
3. Screw in the eccentric Screws and tighten it with a screwdriver.



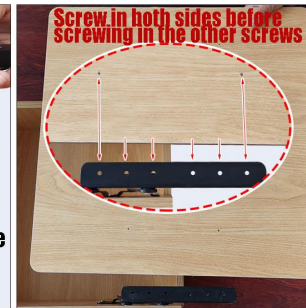
4. Need to screw in the eccentric screw position as shown in the figure.



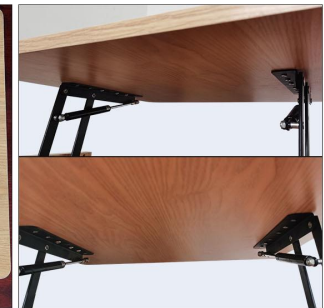
5. Screw in the eccentric bolt, combine the side plate first, and combine with the bottom plate.



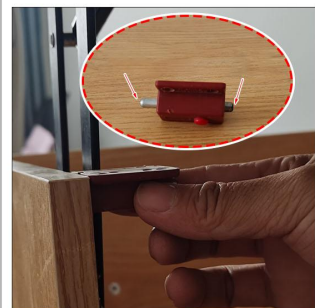
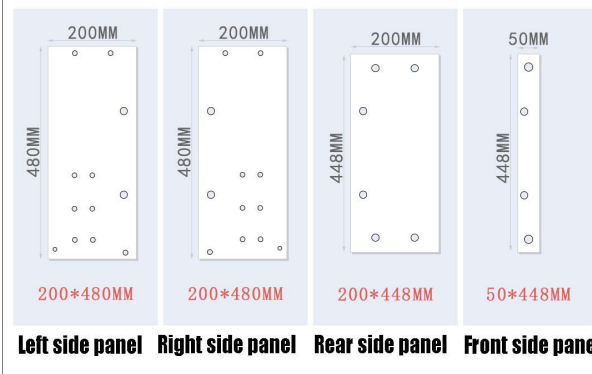
6. Lift the bracket ends, the center has a pre-drilled hole, align the holes screws.



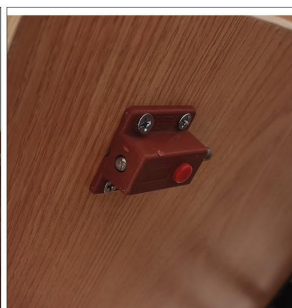
7. 2 positioning holes on the top left and right correspond to the ends of the bracket.



8. Screw the effect as shown.



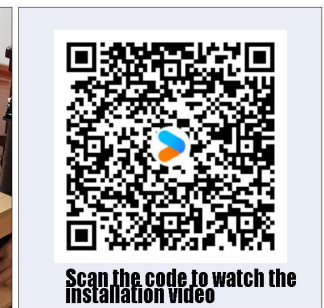
9. The spring-loaded pin is pressed into the metal rod and put into the pre-drilled hole position of the side plate to hold it.



10. Press the top plate, screw in the pins and press the red button to retract the metal rod.



11. After installing the legs with wheels, the coffee table installation is complete.



Scan the code to watch the installation video