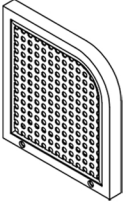
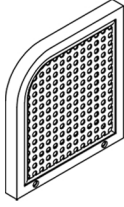


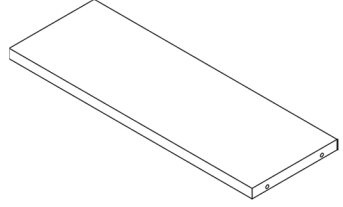
ASSEMBLY INSTRUCTION



A × 2

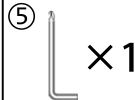
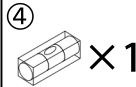
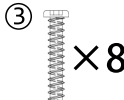
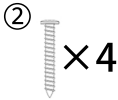
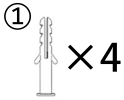


B × 2



C × 2

Hardware
Parts



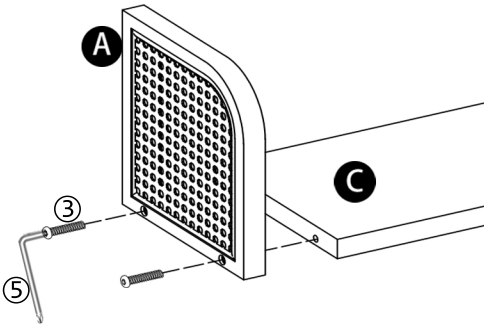
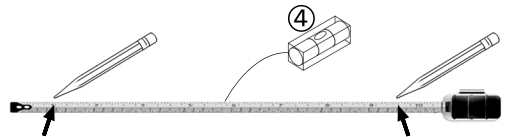
self-provided tools
drill bit: 1/4" (6mm)

Installation Steps

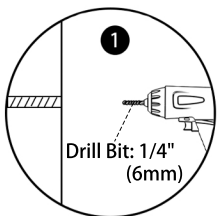
Measure the distance with a ruler.



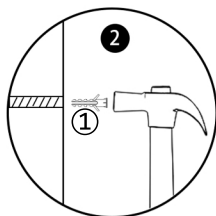
Mark the place where you want to install the shelf and check with a level.



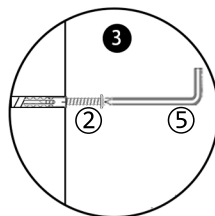
Use screwdriver ⑤ to lock the screws tightly.



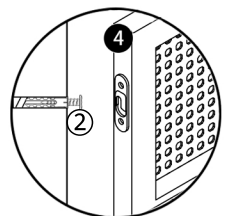
Drill 6 mm holes



Punch the expansion nails



Lock the screws



Hang the shelf