

HF6

FAR INFRARED SAUNA



User Manual for
Infrared Saunas HF6

Installation Procedure



1. Open the dust-proof cover, take out the cup holder and door handle



2. Floor Panel



3. Rear Panel



4. Left Panel



5. Right panel



(Fasten the sauna plate with hasp.)



6. Connect Wires Under the seat



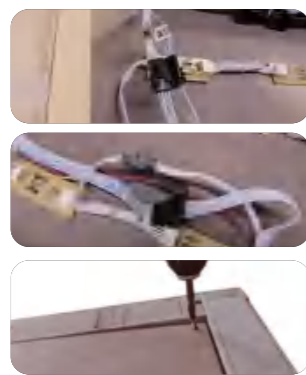
7. After installing the seat support, place the seat panel



8. Front Panel



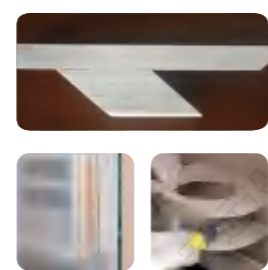
9. Top Panel



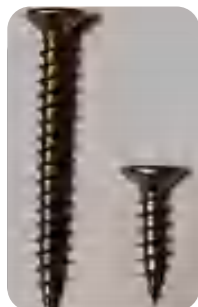
10. Connect Wires on roof, and Fix the dust-proof cover



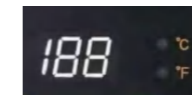
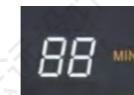
11. Install the handle, cup holder



12. Turn on the lights for display



Short Screws, assemble Top dustcover.
Long Screws, cup holder, towel Rack.



Used to display time, temperature and setting parameters.



POWER Key

Press once to turn on the device, with all lights activated.

Press again to turn off the device, with all lights switched off.

Shutdown linkage: Bluetooth will be automatically turned off, disconnecting the connection with the mobile phone.



Atmosphere Light Key

Press once to turn on the atmosphere light, with the corresponding indicator light on.

Press again to turn off the atmosphere light.

Long-press operation: Long-press until the seven-segment display shows "LX 2n" (X can be 1, 2...8). Press the key again to switch between different colors, where L8 mode is the gradient mode.



Light Key

Press to turn on the light, with the corresponding indicator light on once activated.



C/°F (Temperature Unit Conversion) Key

Press to switch the temperature display unit between Fahrenheit (°F) and Celsius (°C).

④ Temperature & Time Adjustment

Temperature adjustment range:

75~150 °F (equivalent to 25~65 °C)

Time adjustment range: 1~90 minutes

Adjustment method: Each press of the adjustment key increases or decreases the value by 1.

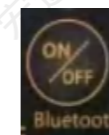
Countdown end: When the time counts down to 0, the device will beep 10 times and then shut down automatically, with both the light and Bluetooth turned off.



FOOTCARE (Foot Heating) Key

Press once to turn on the foot heating function, with the corresponding indicator light on.

Press again to turn off the foot heating function.



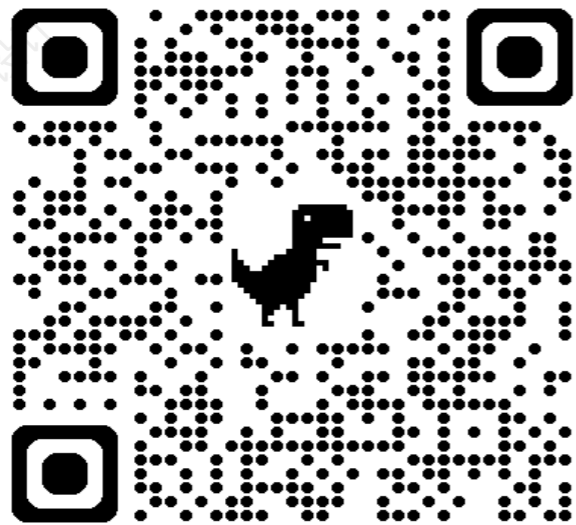
Bluetooth Key (Bluetooth Name: BT-AUDIO)

Press once to turn on the Bluetooth function, with the corresponding indicator light on.

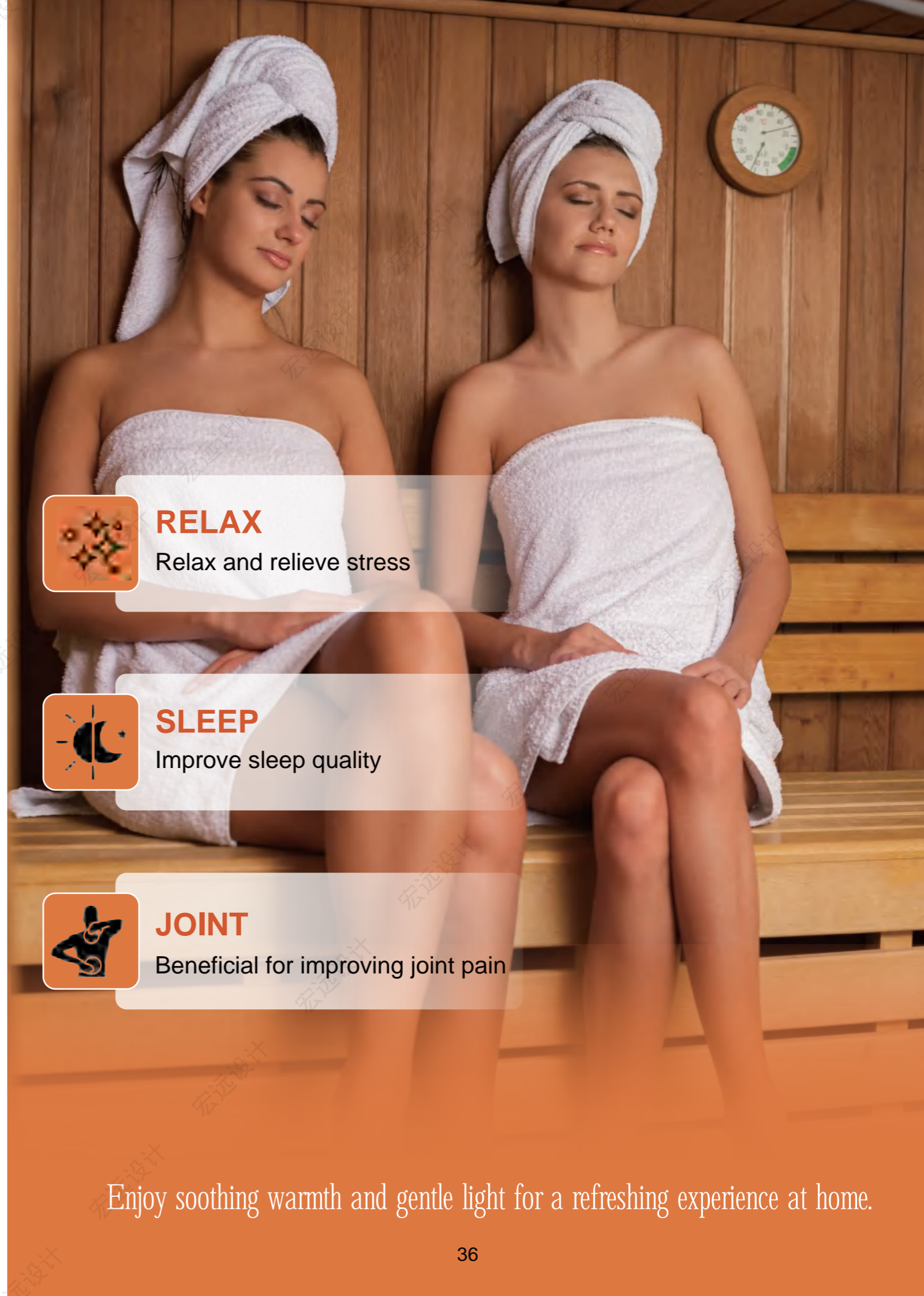
Press again to turn off the Bluetooth function.

Blue-tooth function: Source BT-AUDIO on your mobile phone or other devices with Bluetooth, connect with it when the sauna turns on, then you can play music etc. via bluetooth. To adjust volume, change playing turns, pause or stop via your mobile phone.

For more trouble shooting advice or to report a problem, please contact with your supplier.



(Scan and watch the installation video)



RELAX

Relax and relieve stress



SLEEP

Improve sleep quality



JOINT

Beneficial for improving joint pain

Enjoy soothing warmth and gentle light for a refreshing experience at home.